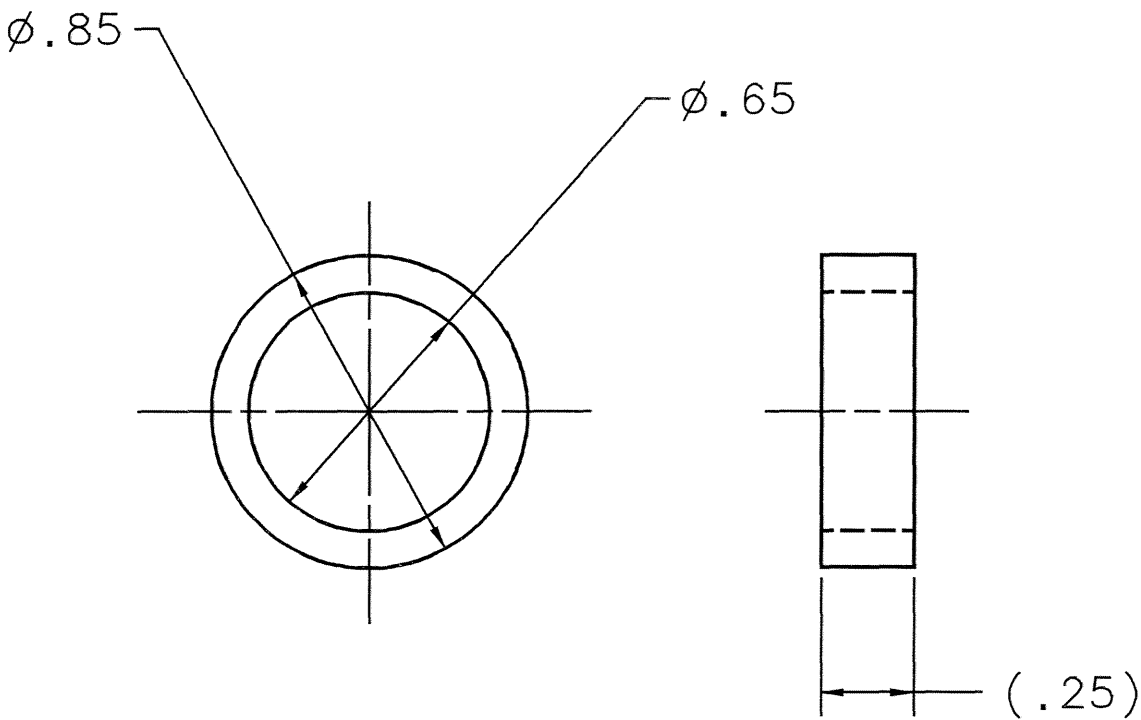


ORBITAL SCIENCES CORPORATION PROPRIETARY DATA: THIS INFORMATION CONTAINS ORBITAL SCIENCES CORPORATION PROPRIETARY DATA AND SHOULD NOT BE RELEASED OR DISCLOSED WITHOUT THE PRIOR EXPRESS WRITTEN APPROVAL OF ORBITAL SCIENCES CORPORATION. THIS DOCUMENT CONTAINS PRIVATE OR PRIVILEGED INFORMATION AND/OR TRADE SECRETS WHICH IS/ARE DISCLOSED IN CONFIDENCE. THIS INFORMATION MAY BE USED, DUPLICATED OR DISCLOSED ONLY TO THE EXTENT AS SPECIFICALLY AUTHORIZED IN WRITING BY ORBITAL SCIENCES CORPORATION.


WARNING: INFORMATION SUBJECT TO U.S. EXPORT CONTROL LAWS. THE ATTACHED DOCUMENTS CONTAIN TECHNICAL DATA WITHIN THE DEFINITION OF THE INTERNATIONAL TRAFFIC IN ARMS REGULATIONS, AND ARE SUBJECT TO THE EXPORT CONTROL LAWS OF THE U.S. GOVERNMENT.

REVISION HISTORY			
REV	DESCRIPTION	DATE	APPROVED
-	RELEASED PER IR 12359	03-08-05	EB

- NOTES:
- MAKE FROM FN 1.
  - BAG AND TAG WITH PART NUMBER.



ALTERED ITEM DRAWING

				1	1	9455K436	RUBBER SHT, 12 X 12 X 1/4, 40 DURO					3A054	1	
				-001	FIND NO.	PART OR IDENTIFYING NO.	NOMENCLATURE OR DESCRIPTION				SPECIFICATION	CAGE CODE	NOTE	
QTY REQD PER DASH NO.					PARTS LIST									
					UNLESS OTHERWISE SPECIFIED				CONTRACT NO.		<div><div>Orbital Sciences Corporation Launch Systems Group 3380 South Price Road Chandler, Arizona 85248</div></div>			
					TOLERANCE: ALL HOLE DIA				DRAWN					DATE
					FROM THRU TOL				BOOTHBY		03-07-22			
					0.00 .125 +.004/- .001				CHECKED		DATE			
					.126 .250 +.005/- .001				E. BROWN		03-07-23			
					.251 .500 +.006/- .001				APPROVED		DATE			
					.501 .750 +.008/- .001									
					.751 1.000 +.010/- .001									
-001	1030-1579				1.001 2.000 +.012/- .001				APPROVED		DATE		SIZE CAGE CODE DRAWING NO. REV B 27555 1030-2122 -	
DASH NO.	NEXT ASSY				OVER 2.000 +.015/- .005				APPROVED		DATE			
APPLICATION					TOP ASSEMBLY NO.				APPROVED		DATE		SCALE: 2/1 WEIGHT: - SHEET 1 OF 1	
					TOLERANCES ON DECIMAL DIMENSIONS: XXX ±.010 XX ±.02 X ±.1				M. RAAF		03-07-30			
					TOLERANCES ON ANGULAR DIMENSIONS: MACHINED AND LOCATING ±0°30' CHAMFERS ±5° FORMED ±1°									