

Statement of Work

Installation of Vindicator Intrusion Detection Systems (IDS) For a PL-4 Electronic Security System (ESS) Open Storage Area

Bldg 5576 IDS Install

1) Purpose: To install Honeywell Vindicator V5 Intrusion Detection System (IDS) in the new Open Storage Area on the 3rd floor of Building 5576 at 66 Kenney Avenue, Barksdale AFB per information below and Attachments 1, 2, and 3. In general the scope of this project will include furnishing all materials, labor, supplies, and equipment necessary for the installation of the IDS and associated parts and pieces as outlined. All parts will be new, no refurbished allowed.

Integrated Base Defense Security System (IBDSS) components will be selected from the most current copy of the AFLCMC/HBU Intrusion Detection System Non-Nuclear Configuration Management Database.

2) System will include but not limited to:

- a) Honeywell-Vindicator
- b) Automated Entry Control System (AECS)
- c) Balance Magnetic Switches (BMS)
- d) Volumetric Sensors
- e) Passive Infrared Motion Sensors
- f) Key Pads
- g) Alarm Panel

3) Pricing Shall Include:

- a) Total turn-key solution
- b) All design and engineering to include draftsman and graphics
- c) Any required pre-programming
- d) Newest firmware/software to join the domain and be integrated into the SFS head-in at B6000.
- e) Physical installation of all devices listed in section 2 above.
- f) All travel, Per Diem, Lodging, Rental Car & Airport Parking

- g) 1 person to not exceed 15 days to perform Onsite Programming, testing and 3 days for 72-Hr Burn-in.
- h) Shipping

4) Qualifications:

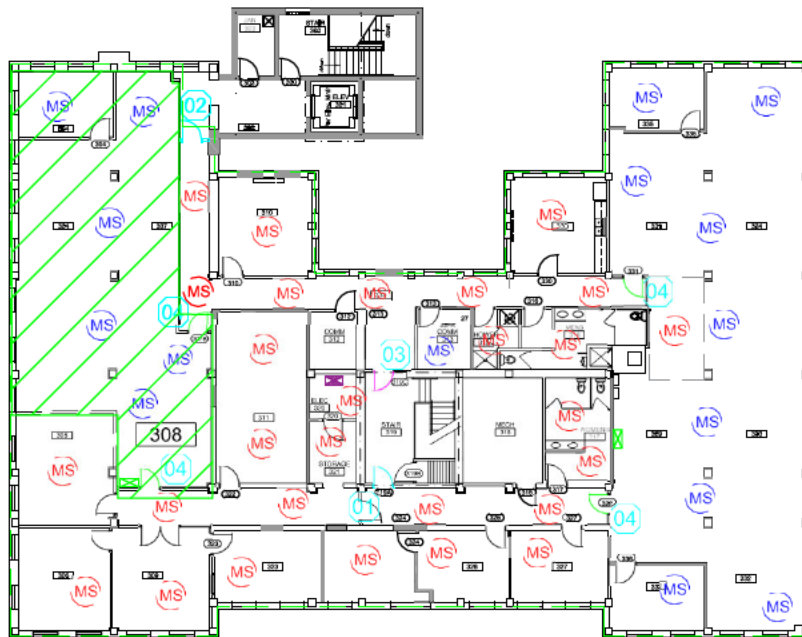
- a) Must be Vindicator system certified.

5) 2 CS Shall:

- a) Provide escorts and assistance as required.
- b) Provide a Cat-6 drop at the V5 location.
- c) Program network ports for connection to the V5.

Attachments:

- 1. SOW Tab 1 IDS Motion sensors blueprint**
- 2. SOW Tab 2 B5576 3rd Floor Com Plan**
- 3. SOW Tab 3 B5576 Camera Keypad Locations**



B5576 3RD FLOOR PLAN

N.T.S.

- (MS)** ****ESTIMATED** - NEW LOCATION FOR IDS/MOTION SENSOR, CONTRACTOR TO VERIFY 100% COVERAGE OF FLOOR SPACE DURING ALARM SYSTEM DESIGN.
- (MS)** ****ESTIMATED** LOCATION OF EXISTING IDS/MOTION SENSORS, CONTRACTOR TO VERIFY LOCATION MEETS 100% COVERAGE, AND SENSOR ARE STILL COMPATIBLE WITH VINDICATOR SYSTEM.
- [X]** CURRENT ALARM PANEL LOCATIONS
- [X]** PROPOSED ALARM PANEL LOCATIONS, PANEL/EQUIPMENT BY OTHERS.
- [D]** EXIT ONLY DOORS, WILL REQUIRE ALARM CONTACTS.
- [D]** NEW SECURE ENVELOPE ENTRY DOOR. WILL REQUIRE X-10, ACCESS CONTROL (KEYPAD BOTH SIDES OF THE DOOR) PHONE ON BOTH SIDES OF THE DOOR, CAMERA CONTROL AND MONITOR. ALARM CONTACT.
- [D]** DISCONNECT DOOR ALARM CONTACTS.

THIS DIAGRAM IS FOR REPRESENTATION ONLY!

THIS DOES IS NOT A DESIGN OR APPROVAL FOR THE IDS SYSTEM.

CE IS NOT TRAINED OR CERTIFIED IN THE DESIGN LAYOUT, PURCHASE, INSTALL, PROGRAMMING OF THE IDS ACCESS CONTROL ALARM SYSTEM THAT IS REQUIRED FOR THIS AREA.

THIS PROJECT WILL SUPPORT THE POWER CONDUIT AND JUNCTION BOX REQUIREMENTS TO SUPPORT THE VINDICATOR ALARM SYSTEM, IDS, ACCESS CONTROL REQUIREMENTS. END USER IS RESPONSIBLE FOR EQUIPMENT, INSTALL, PROGRAMMING, AND TESTING.

ALL ALARMS AND ACCESS CONTROL WILL BE ROUTED TO EXISTING ALARM BOX (V5) LOCATED IN RM 308. NOT RM328.
CURRENT DEVICE WIRED TO PANEL IN 328 WILL BE RE ROUTED TO RM308 PANEL

- (01)** NEW PRIMARY ENTRANCE TO SECURE SPACE
- (02)** NEW 2ND ALTERNATE ENTRANCE TO SECURE SPACE
- (03)** EMERGENCY EXIT ONLY
- (04)** PREVIOUS SECURE DOORS, WILL NO LONGER REQUIRE ALARM CONTACT. SEE NOTE BELOW.

***UPDATED 12/13/2022**

NO WORK WILL BE PREFORMED INSIDE THE SECURE ROOM 308 OR AT WALLS AND DOOR THAT MAKE UP SECURE ENVELOPE. ONCE ALL OTHER WORK IS COMPLETED AND GC REQUEST MEETING FROM CONTRACTING.



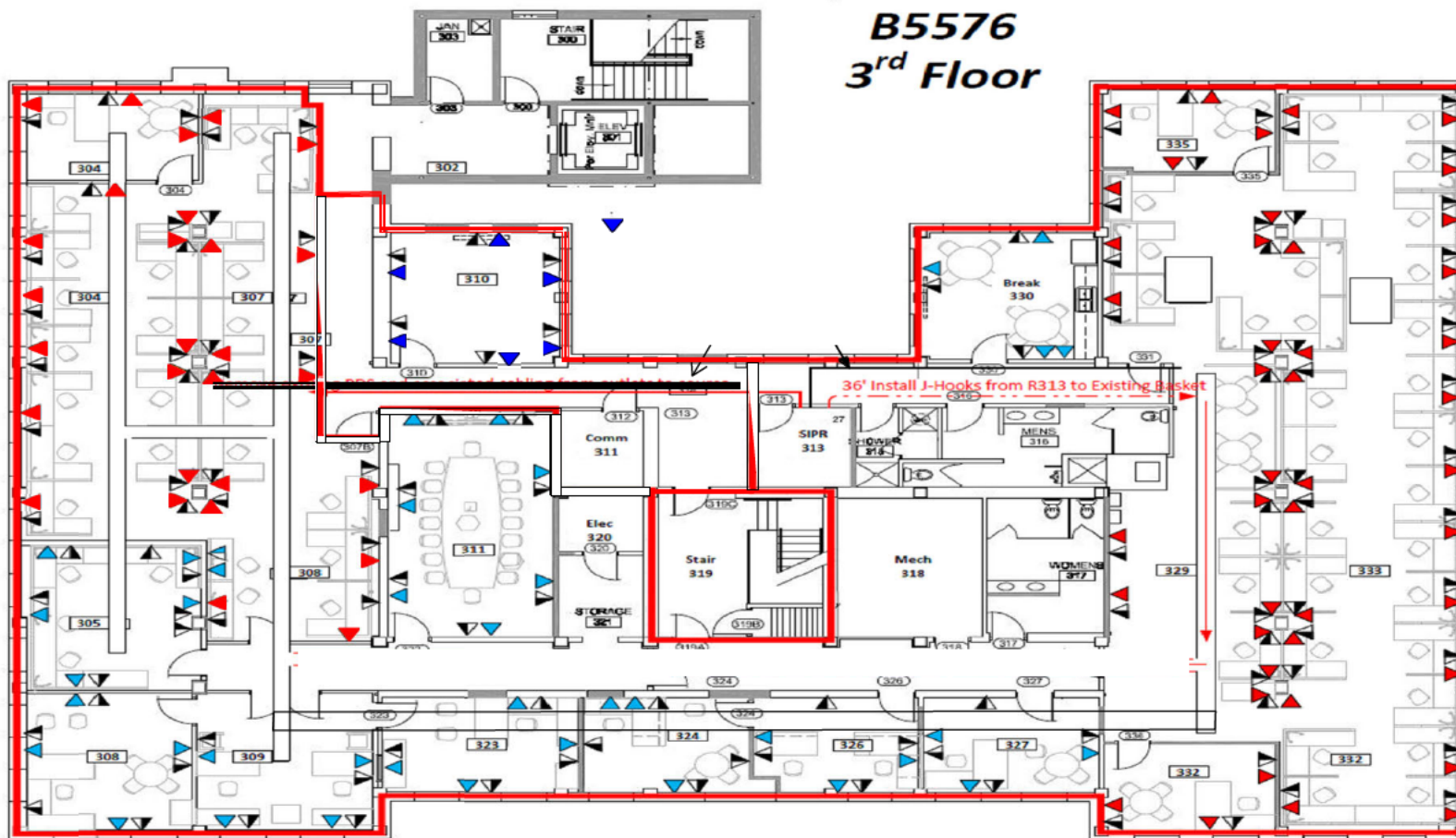
PROJECT: REPAIR SECURE SPACE IN B5576 3RD FLOOR FOR AFGSC A5



***UPDATED 08/03/2022**

***UPDATED 12/13/2022**

3.1



B5576 3RD FLOOR PLAN (COM PLAN)

N.T.S.

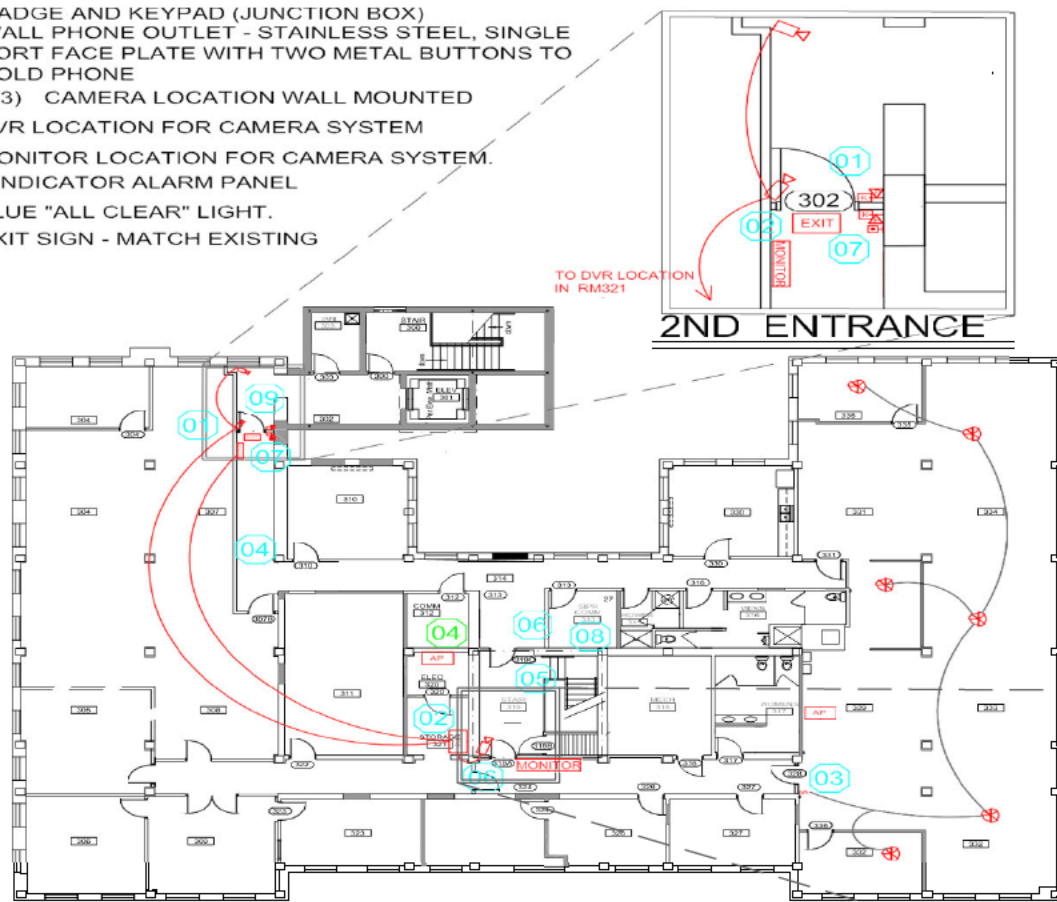
PROJECT: REPAIR SECURE SPACE IN B5576 3RD FLOOR FOR AFGSC A5

***UPDATED 08/03/2022**

***UPDATED 12/13/2022**

3.1

- [K] BADGE AND KEYPAD (JUNCTION BOX)
- [V] WALL PHONE OUTLET - STAINLESS STEEL, SINGLE PORT FACE PLATE WITH TWO METAL BUTTONS TO HOLD PHONE
- [C] CAMERA LOCATION WALL MOUNTED
- [D] DVR LOCATION FOR CAMERA SYSTEM
- [M] MONITOR LOCATION FOR CAMERA SYSTEM
- [AP] VINDICATOR ALARM PANEL
- [B] BLUE "ALL CLEAR" LIGHT
- [EXIT] EXIT SIGN - MATCH EXISTING



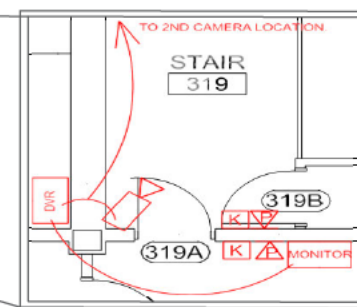
B5576 3RD FLOOR PLAN

N.T.S.



2ND ENTRANCE

- 01 ACCESS CONTROL SYSTEM REQUIRED FOR MAIN ENTRY DOOR (319A) & (302), SUPPLY POWER FOR DOOR, KEYPADS (BOTH SIDES OF DOOR), ALARM CONTACT, AND SUPPLY PHONE JACKS FOR EACH SIDE OF DOOR.
- 02 SUPPLY CONDUITS FOR 3 CAMERA SYSTEM, WITH CONDUIT TO ROOM 321. IN RM 321 SUPPLY POWER AND CONDUIT TO SUPPORT DVR. IN HALLWAY NEAR ENTRY DOOR SUPPLY POWER AND CONDUIT FOR TV WALL MOUNT. SUPPLY J BOX FOR EACH CAMERA LOCATION.
- 03 SUPPLY POWER, SWITCH, AND LIGHTS AS IDENTIFIED FOR "ALL CLEAR BLUE LIGHTS" TO OPERATE OFF NEW SWITCH BY DOOR 328
- 04 SUPPLY POWER, CONDUIT, & CABLES TO SUPPORT THE IDS, ALARM SYSTEM, RM 320. SEE IDS PAGE, FOR SAMPLE DIAGRAM. WE ARE ONLY SUPPLY CONDUIT AND J-BOX. ENDUSER WILL HIRE SEPARATE CONTRACT FOR INSTALL AND PROGRAMMING OF ALARM SYSTEM (DOORS ALARMS, IDS, AND ACCESS CONTROL POINTS).
***UPDATED 12/13/2022**
- 05 NEW EXIT ONLY DOORS, 319C, SUPPLY ALARM CONTACT FOR DOOR.
- 06 REMOVE ALL ABANDON CONDUIT FROM SECURE ENVELOPE. SPECIALLY ABOVE 318C & 19A DOOR WAYS.
- 07 RELOCATE EXIT LIGHT IN HALLWAY ABOVE NEW SECURE ENTRY DOOR. TO INSIDE SECURE SPACE ABOVE NEW DOOR 302A
- 08 SEE COM SHEET FOR COM REQUIREMENTS.
- 09 ADD 2X2 EMERGENCY LIGHT OUTSIDE OF NEW DOOR 302A, ALSO RELOCATE HALLWAY LIGHT SWITCH TO INSIDE SECURE ENVELOPE. A BLANK PLATE CAN COVER PREVIOUS SWITCH LOCATION.



MAIN ENTRANCE

PROJECT: REPAIR SECURE SPACE IN B5576 3RD FLOOR FOR AFGSC A5

***UPDATED 08/03/2022**

***UPDATED 12/13/2022**

3.1

