

ORBITAL SCIENCES CORPORATION PROPRIETARY DATA: THIS INFORMATION CONTAINS ORBITAL SCIENCES CORPORATION PROPRIETARY DATA AND SHOULD NOT BE RELEASED OR DISCLOSED WITHOUT THE PRIOR EXPRESS WRITTEN APPROVAL OF ORBITAL SCIENCES CORPORATION. THIS DOCUMENT CONTAINS PRIVATE OR PRIVILEGED INFORMATION AND/OR TRADE SECRETS WHICH IS/ARE DISCLOSED IN CONFIDENCE. THIS INFORMATION MAY BE USED, DUPLICATED OR DISCLOSED ONLY TO THE EXTENT AS SPECIFICALLY AUTHORIZED IN WRITING BY ORBITAL SCIENCES CORPORATION.

WARNING: INFORMATION SUBJECT TO U.S. EXPORT CONTROL LAWS. THE ATTACHED DOCUMENTS CONTAIN TECHNICAL DATA WITHIN THE DEFINITION OF THE INTERNATIONAL TRAFFIC IN ARMS REGULATIONS, AND ARE SUBJECT TO THE EXPORT CONTROL LAWS OF THE U.S. GOVERNMENT.

CDM RELEASED

REVISION HISTORY			
REV	DESCRIPTION	DATE	APPROVED
-	RELEASED PER ECN-0000003361	06JAN13	MB

OUTSTANDING EO(s) EXIST AGAINST THIS REVISION OF THE DRAWING

BOOSTER SEP PRIMARY +
BOOSTER SEP PRIMARY -
BOOSTER SEP SECONDARY +
BOOSTER SEP SECONDARY -

BOOSTER SEP1 MON
BOOSTER SEP1 MON RTN
BOOSTER SEP2 MON
BOOSTER SEP2 MON RTN
BOOSTER SEP3 MON
BOOSTER SEP3 MON RTN

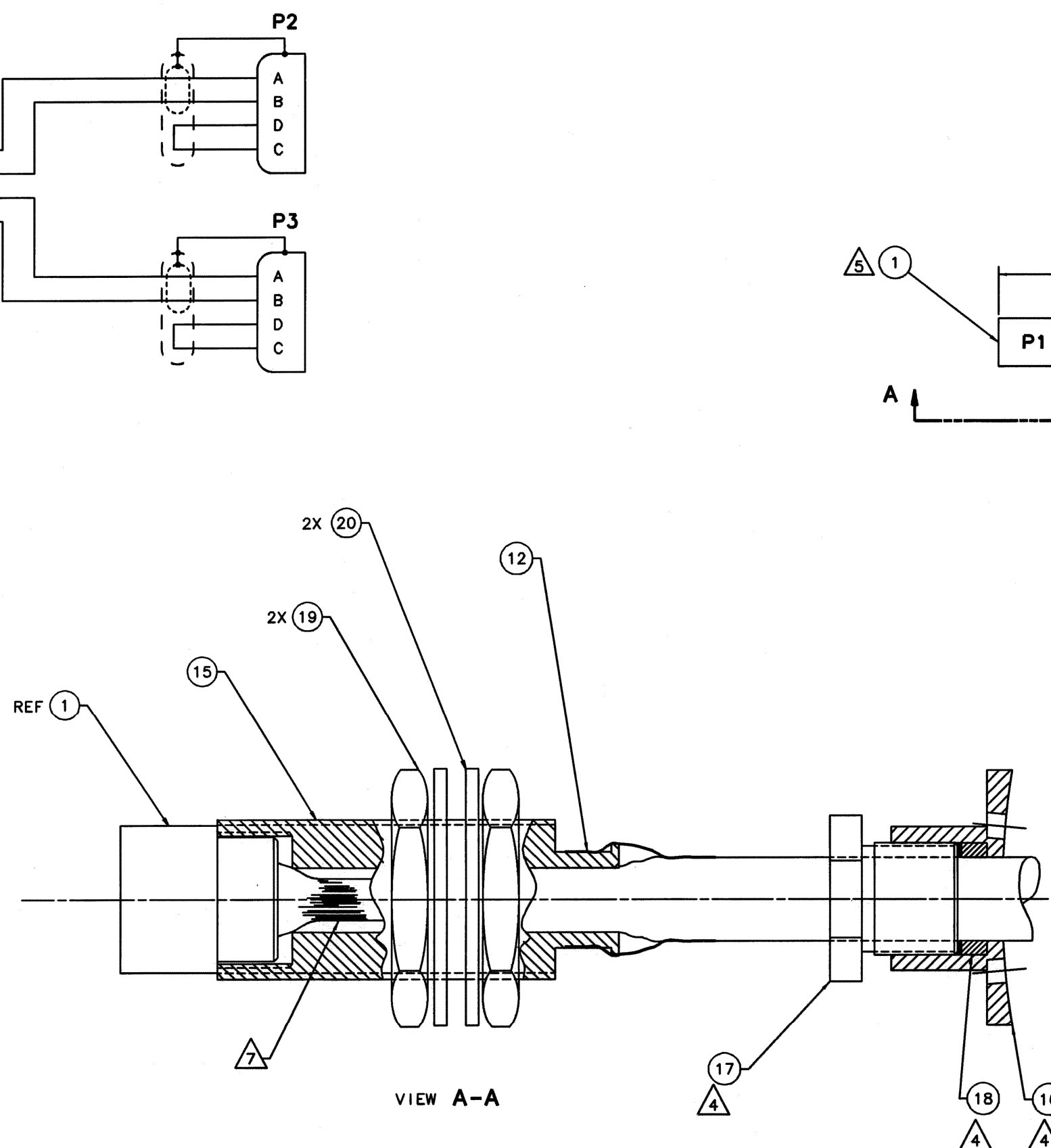


TABLE B

CONN DESIG	TERM TYPE (5600-8575)	A	B	C	D	E	F	G	H	I	J	K	CONN/BSHL TORQUE IN LB	STRAIN RELIEF TORQUE IN LB	SADDLE CLAMP HDW TORQUE IN LB	CONNECTOR TERMINATION TYPE	REF CABLE DIA
P1	SEE VIEW A-A	-	-	-	-	-	-	-	-	-	-	-	116.0±5.0	NA	NA	CRIMP	.42
P2	FIGURE 6-12	5	6	8	9	NA	11	12	-	-	-	-	40.0±5.0	NA	NA	CRIMP	.23
P3	FIGURE 6-12	5	6	8	9	NA	11	12	-	-	-	-	40.0±5.0	NA	NA	CRIMP	.23

NOTES:

- ASSEMBLE PER TM-8575. TEST PER TM-16599.
- MARK LABEL PER TABLE A. REPLACE Xs WITH DASH NUMBER AND SERIAL NUMBER.
- TORQUE HARDWARE PER TABLE B.
- ASSEMBLE PARTS AS SHOWN IN VIEW A-A. HAND TIGHTEN ASSY ONLY.
- COUPLING SHALL BE REMOVED FROM CONNECTOR.
- ASSEMBLE PER EMI/RFI CRITERIA OF TM-8575.
- WRAP CABLE USING FN 23 FOR 2-4 WRAPS 3.0-3.5 INCHES FROM REAR OF P1 PRIOR TO INSERTING INTO FN 15.

TABLE A

CONN DES	LABEL INFORMATION
P1	1030-5579-XXX 1W1 P1 SN XXXX M/W PORT RACEWAY 2W4-J4
P2	1W1 P2 M/W SEP INIT CARTRIDGE 1 J1
P3	1W1 P3 M/W SEP INIT CARTRIDGE 2 J1

SEE SEPARATE PARTS LIST

			UNLESS OTHERWISE SPECIFIED			CONTRACT NO.		
TOLERANCES: ALL HOLE DIA			1. INTERPRET DIMENSIONS AND TOLERANCES PER ASME Y14.5M-1994.			DRAWN BY CAMPAGNOLO		
FROM	THRU	TOL	2. INTERPRET DIMENSIONS AND TOLERANCES PER ASME Y14.100.			DATE	06-01-06	
.000	.125	±.001	3. DIMENSIONS ARE IN INCHES.			CHECKED BY R. BOASE	DATE 06-01-10	
.126	.250	±.002	4. SURFACE TEXTURE 125/10.			APPROVED BY M. BULLOCK	DATE 06-01-10	
.251	.500	±.003	5. DIMENSIONS APPLY AFTER PLATING.			TITLE		
.501	.750	±.004	6. REMOVE ALL BURRS AND SWAMP EDGES, .005 - .015.			CABLE ASSEMBLY, 1W1, GQM-163A STBD BOOSTER INTFC		
.751	1.000	±.005	7. INTERNAL MACHINED RADII .03 MAX.			SIZE	CAGE CODE	DRAWING NO.
1.001	2.000	±.007	8. TOLERANCES ON DECIMAL DIMENSIONS: .001 - .010 ±.001, .011 - .020 ±.002, .021 - .050 ±.003, .051 - .100 ±.004, .101 - .200 ±.005, .201 - .500 ±.007, .501 - 1.000 ±.009, 1.001 - 2.000 ±.012, OVER 2.000 ±.015.			E 27555	1030-5579	-
1030-5579-001	1030-5019					SCALE: NONE	WEIGHT: -	SHEET 1 OF 1
PARTY NUMBER	TEXT ASST							