

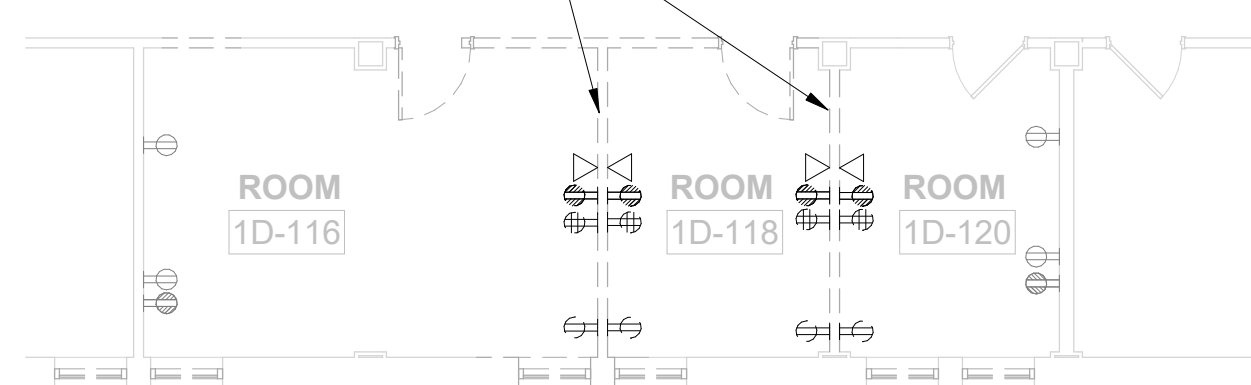
2/2/2009 10:11:29 AM

① REMODEL AREA LOCATION
1" = 30'-0"

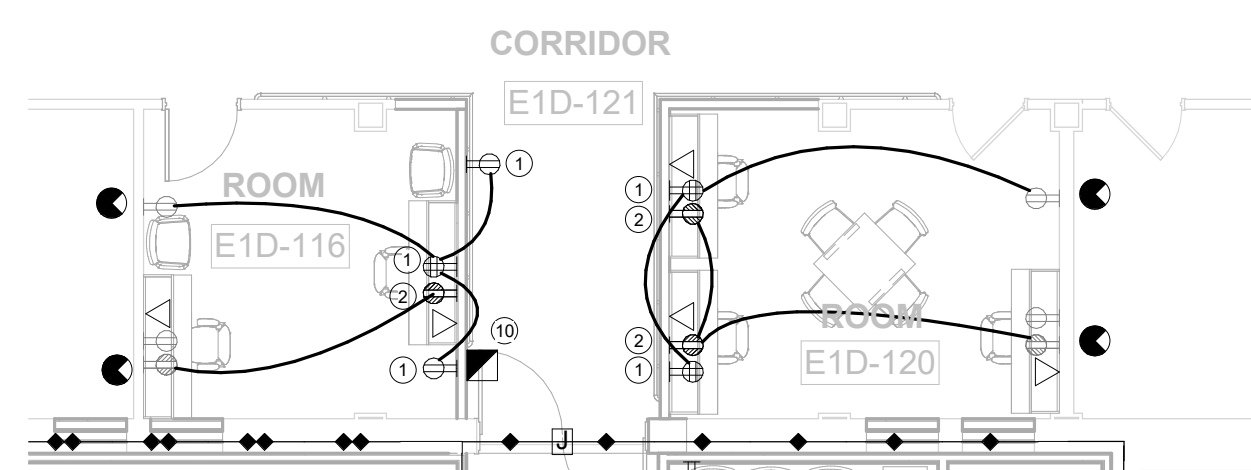
REMOVE EXISTING CARD READER, ASSOCIATED
DEVICES & WIRING. PREPARE CARD READER FOR
RELOCATION. CONDUIT TO REMAIN AND BE EXTENDED
ABOVE ACCESSIBLE CEILING TO NEW LOCATION
SHOWN ON SHEET E-400.

2 BASEMENT LEVEL - ELECTRICAL DEMOLITION PLAN
1/8" = 1'-0"

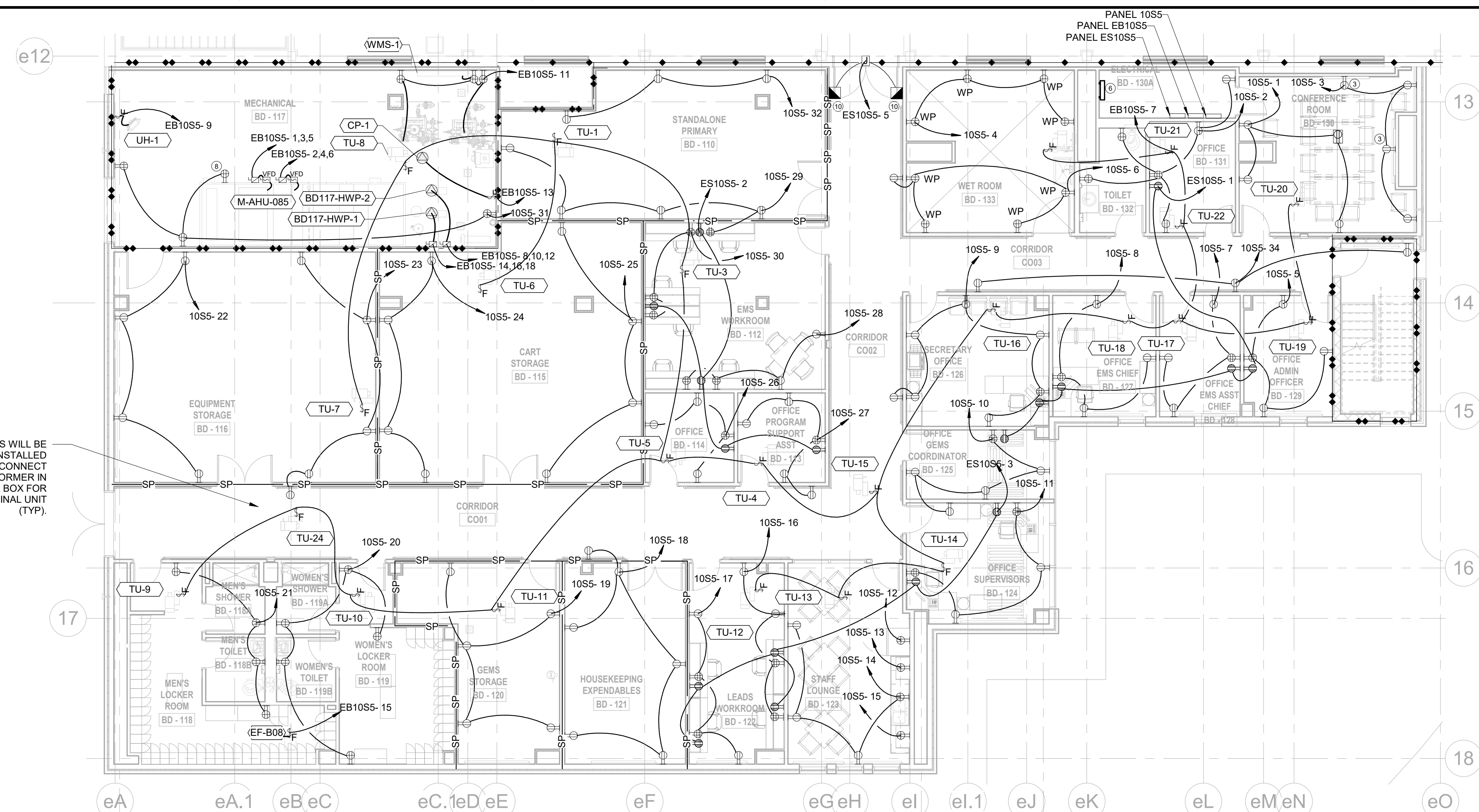
REMOVE EXISTING RECEPTACLES, DATA CONNECTIONS AND ASSOCIATED WIRING FROM EXISTING WALLS TO BE DEMOLISHED IN THEIR ENTIRETY.



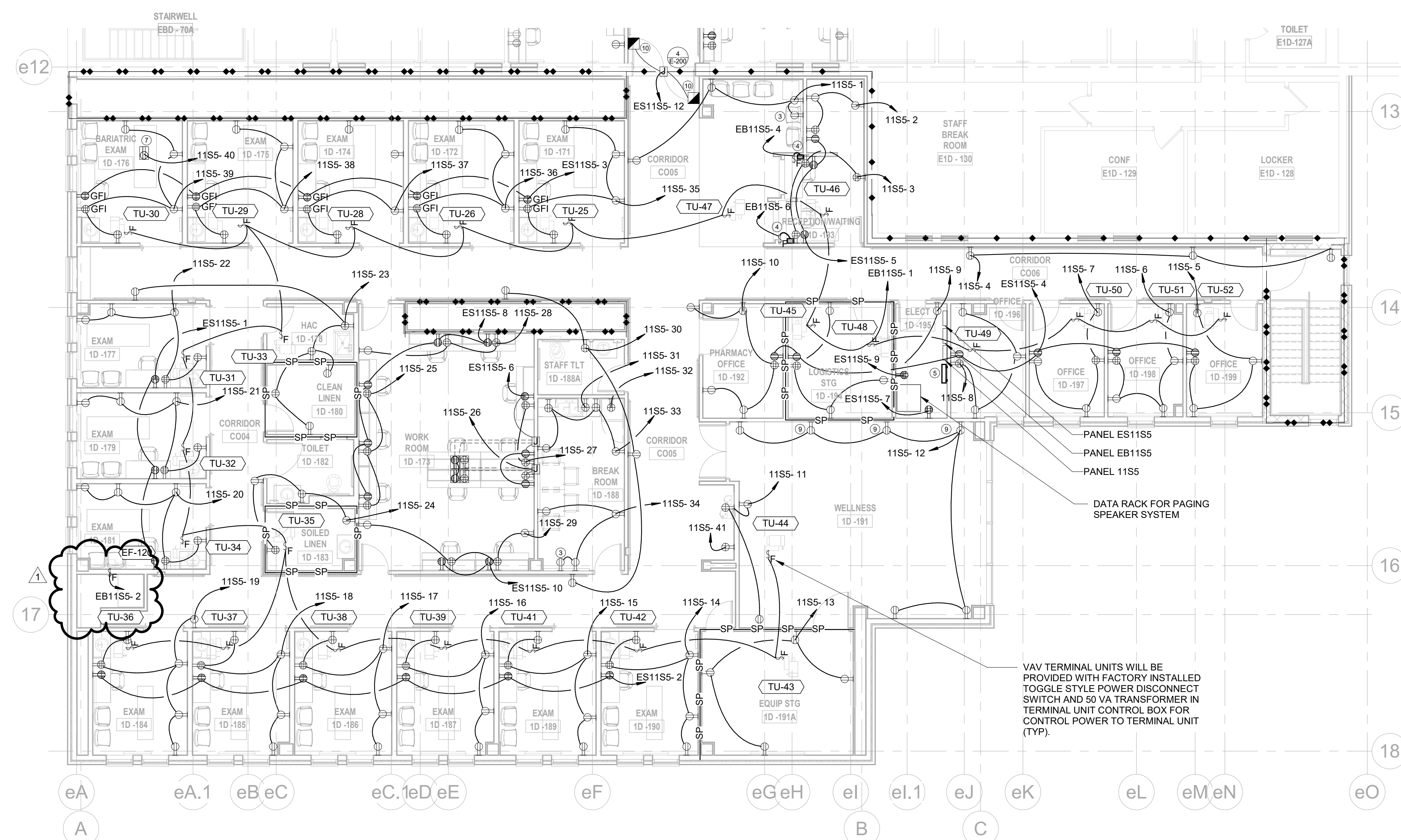
③ **LEVEL 1 - ELECTRICAL DEMOLITION PLAN**
1/8" = 1'-0"



④ LEVEL 1 - ELECTRICAL REMODEL PLAN
1/8" = 1'-0"






5 BASEMENT LEVEL - POWER PLAN
1/8" = 1'-0"



8 LEVEL 1 - POWER PLAN
1/8" = 1'-0"

RATED WALL SYMBOLS

| | |
|---|---------------------|
|  | 1-HOUR FIRE BARRIER |
|  | SMOKE PARTITION |
|  | 2-HOUR FIRE BARRIER |

KEYED ELECTRICAL NOTES

- ① INSTALL RECEPTACLE AND TIE INTO EXISTING POWER CIRCUIT.
- ② INSTALL NEW RECEPTACLE AND TIE INTO EXISTING EMERGENCY POWER CIRCUIT.
- ③ INSTALL RECEPTACLE FOR POWER BEHIND WALL MOUNT TV PER DETAIL 11E-004.
- ④ CONTRACTOR TO INSTALL DUSTY ABOVE ACCESSIBLE CEILING AND RISK MEDIUM DUTY COMMERCIAL DOOR OPENER FOR ROLLING-CURTAIN CONTROL CASE. PROVIDE WALL MOUNT KIT #AA0A11.0001S, AND BOTTOM SENSING EDGE.
- ⑤ LEVEL 1 ELECTRICAL GROUNDING BUS BAR LOCATION. SEE DETAIL 11E-003. BUS BAR NOT RATED FOR OIT SERVICE.
- ⑥ BASEMENT LEVEL ELECTRICAL GROUNDING BUS BAR LOCATION. SEE DETAIL 11E-003. BUS BAR NOT RATED FOR OIT SERVICE.
- ⑦ PROVIDE DUPLEX RECEPTACLE AT LIFT DOCKING STATION TO POWER BARIATRIC PATIENT LIFT. RECEPTACLE HEIGHT TO BE COORDINATED WITH LIFT MANUFACTURER.
- ⑧ RECEPTACLE IS FACTORY PROVIDED. POWER FOR INTERNAL AHU LIGHTING TO BE PROVIDED BY THIS CIRCUIT.
- ⑨ RECEPTACLE TO BE MOUNTED 18" AFF. COORDINATE RECEPTACLE BOX INSTALLATION DEPTH SO THAT COVER PLATE WILL BE FLUSH AGAINST MIRROR SURFACE. MIRROR INSTALLER TO FIELD COORDINATE AND PROVIDE OPENING IN MIRROR TO ACCOMMODATE RECEPTACLE INSTALLATION.
- ⑩ MAGNETIC DOOR HOLD OPEN BY DOOR HARDWARE VENDOR MOUNTED ON WALL AT LOCATION TO MEET DOOR SWING.

CONSULTANTS:

ARCHITECT

| |
|---------------|
| Drawing Title |
|---------------|

POWER PLANS

Approved: Project Director

FARGO VAHCS

| | |
|---------------|------------------------------------|
| Project Title | EXPAND BLDG. 1 FOR PRIMARY CARE |
|---------------|------------------------------------|

| | |
|----------|-----------------|
| Location | 2101 ELM STREET |
|----------|-----------------|

FARGO, ND 58102

| | |
|----------------|--|
| Project Number | |
|----------------|--|

Building Number

| | |
|--|----------------|
| | |
| | Drawing Number |

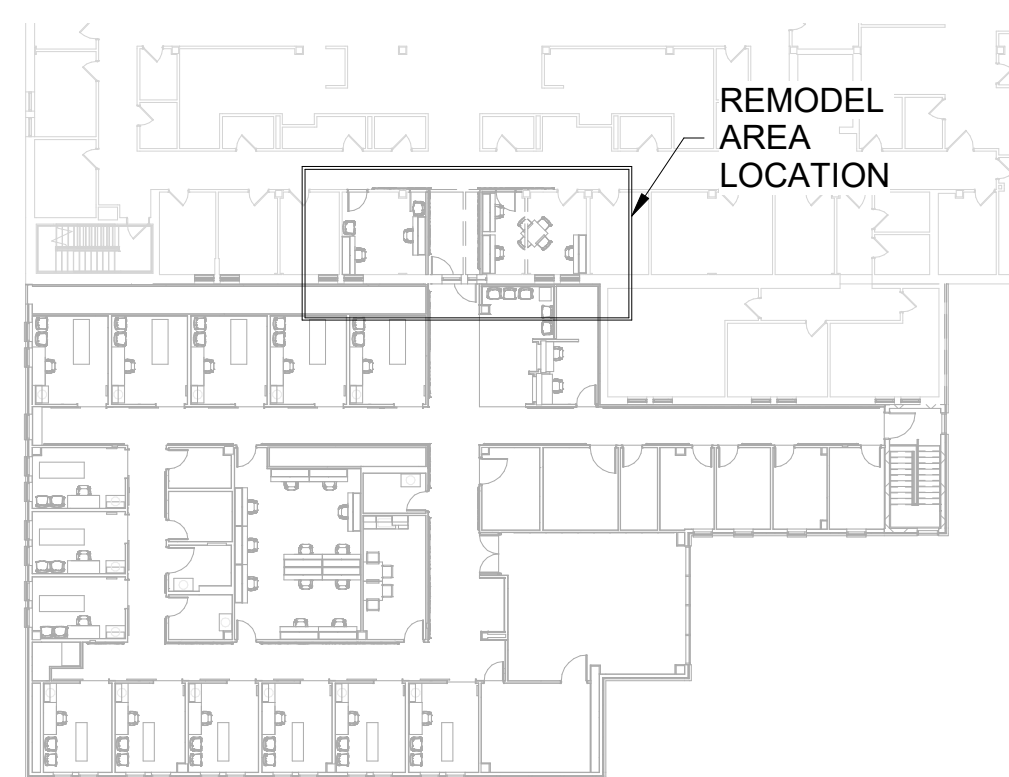
E 20

RATED WALL SYMBOLS

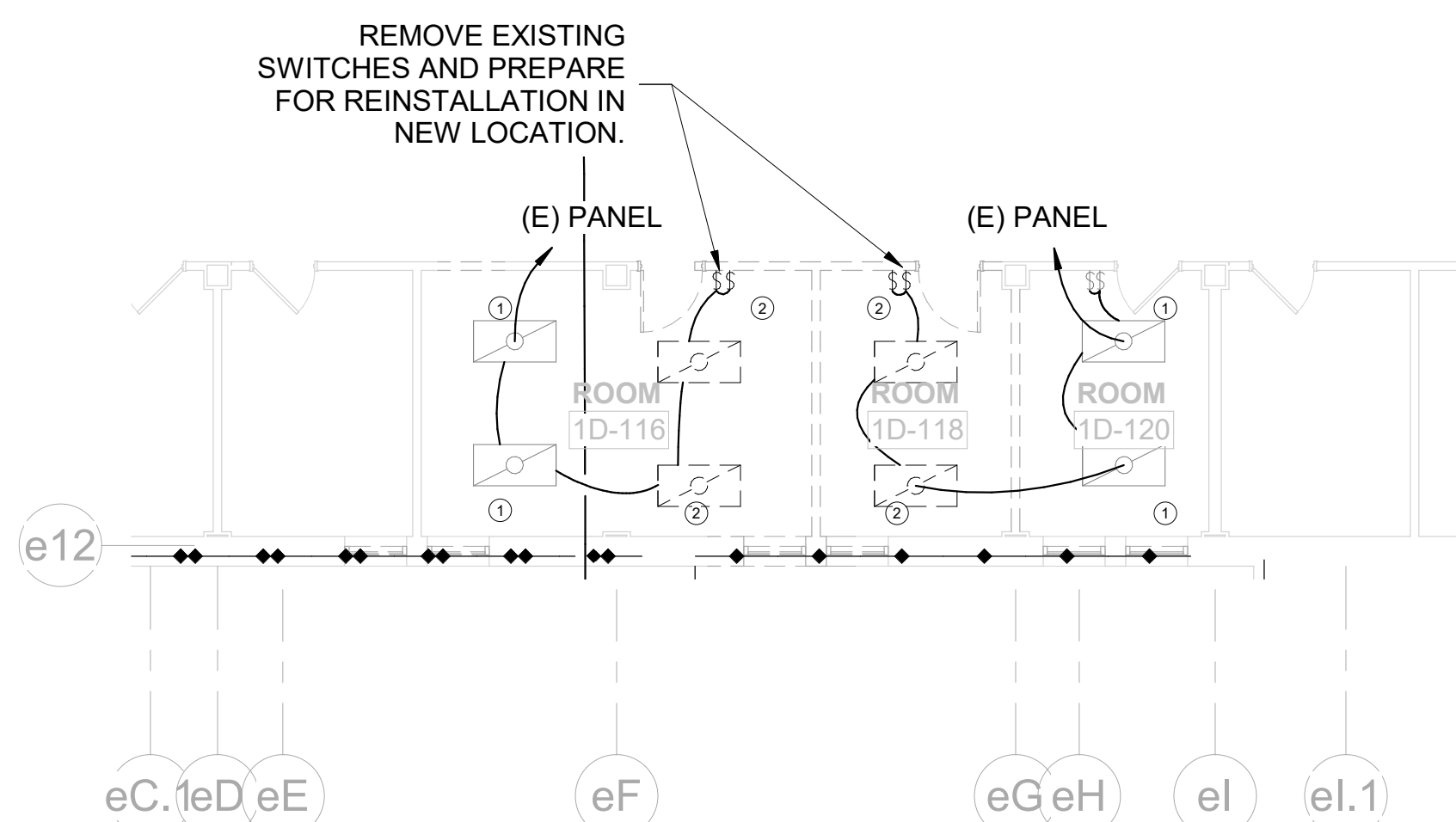
- 1-HOUR FIRE BARRIER
- SMOKE PARTITION
- 2-HOUR FIRE BARRIER

KEYED ELECTRICAL NOTES

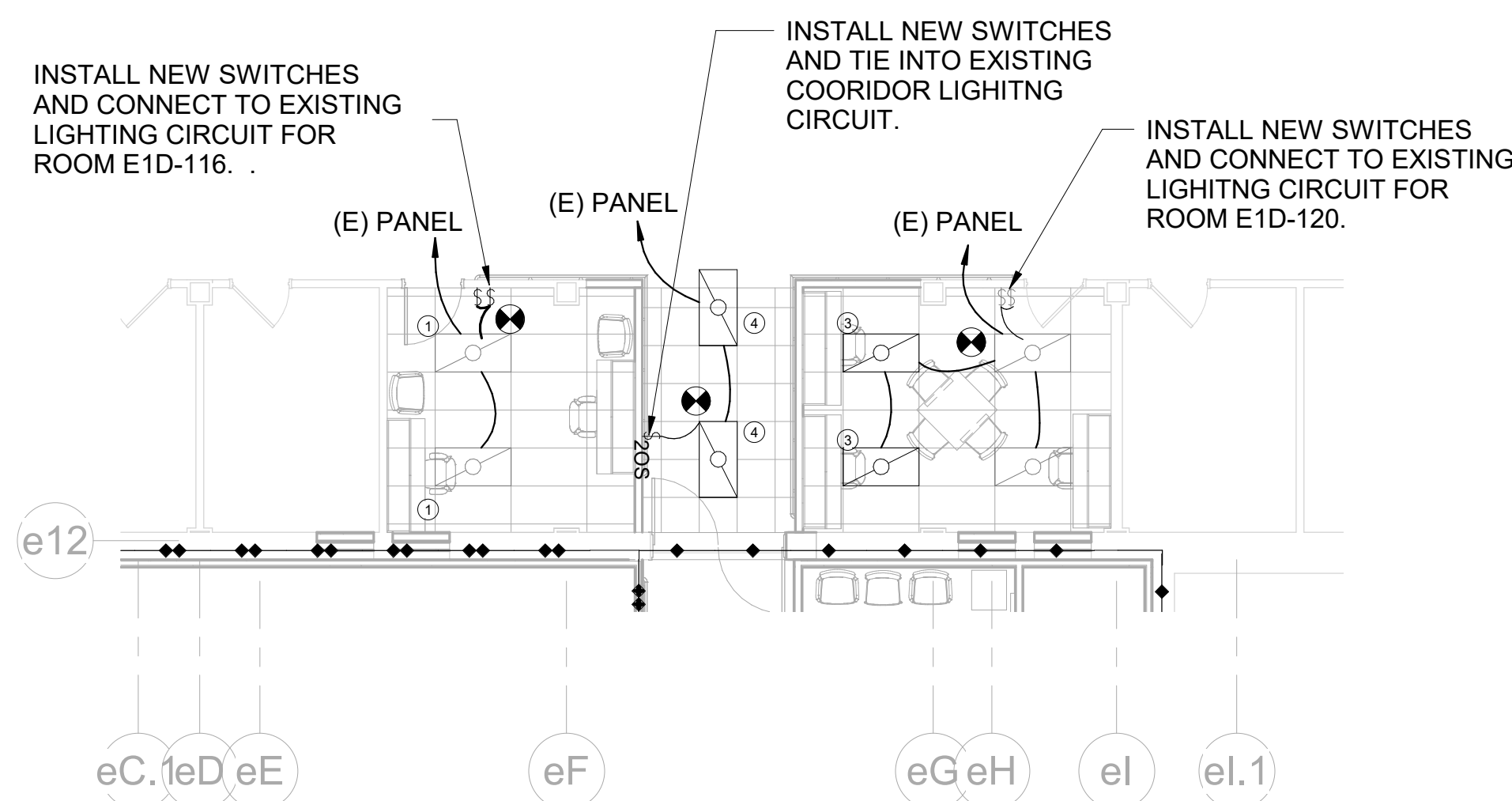
- EXISTING LUMINAIRE TO REMAIN.
- REMOVE EXISTING LUMINAIRE AND PREPARE FOR REUSE IN NEW LOCATION.
- INSTALL EXISTING LUMINAIRE FROM ROOM 1D-118 IN NEW LOCATION SHOWN. CONNECT TO EXISTING LIGHTING CIRCUIT FROM ROOM 1D-120. CONNECT SWITCH LEG TO EXISTING SWITCH BANK REINSTALLED IN NEW LOCATION SHOWN.
- INSTALL EXISTING LUMINAIRE FROM ROOM 1D-116 IN NEW LOCATION SHOWN. CONNECT TO EXISTING LIGHTING CIRCUIT IN CORRIDOR 1D-121. CONNECT SWITCH LEG TO NEW SWITCH BANK IN LOCATION SHOWN.
- LUMINAIRE TO BE ON UNSWITCHED EMERGENCY POWER TO PROVIDE ALWAYS-ON LIGHTING IN STAIRWELL.



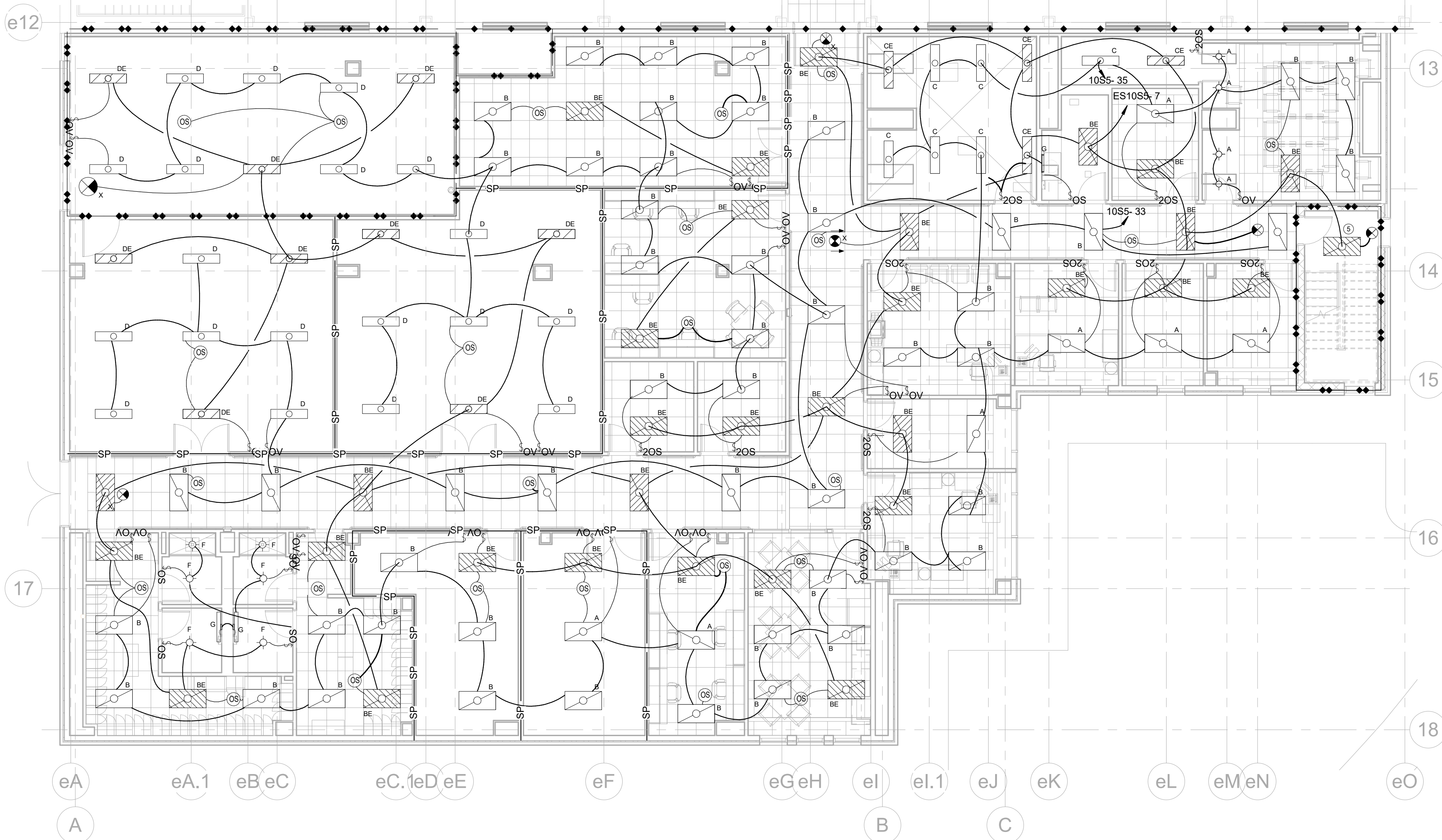
1 REMODEL AREA LOCATION
1" = 30'-0"



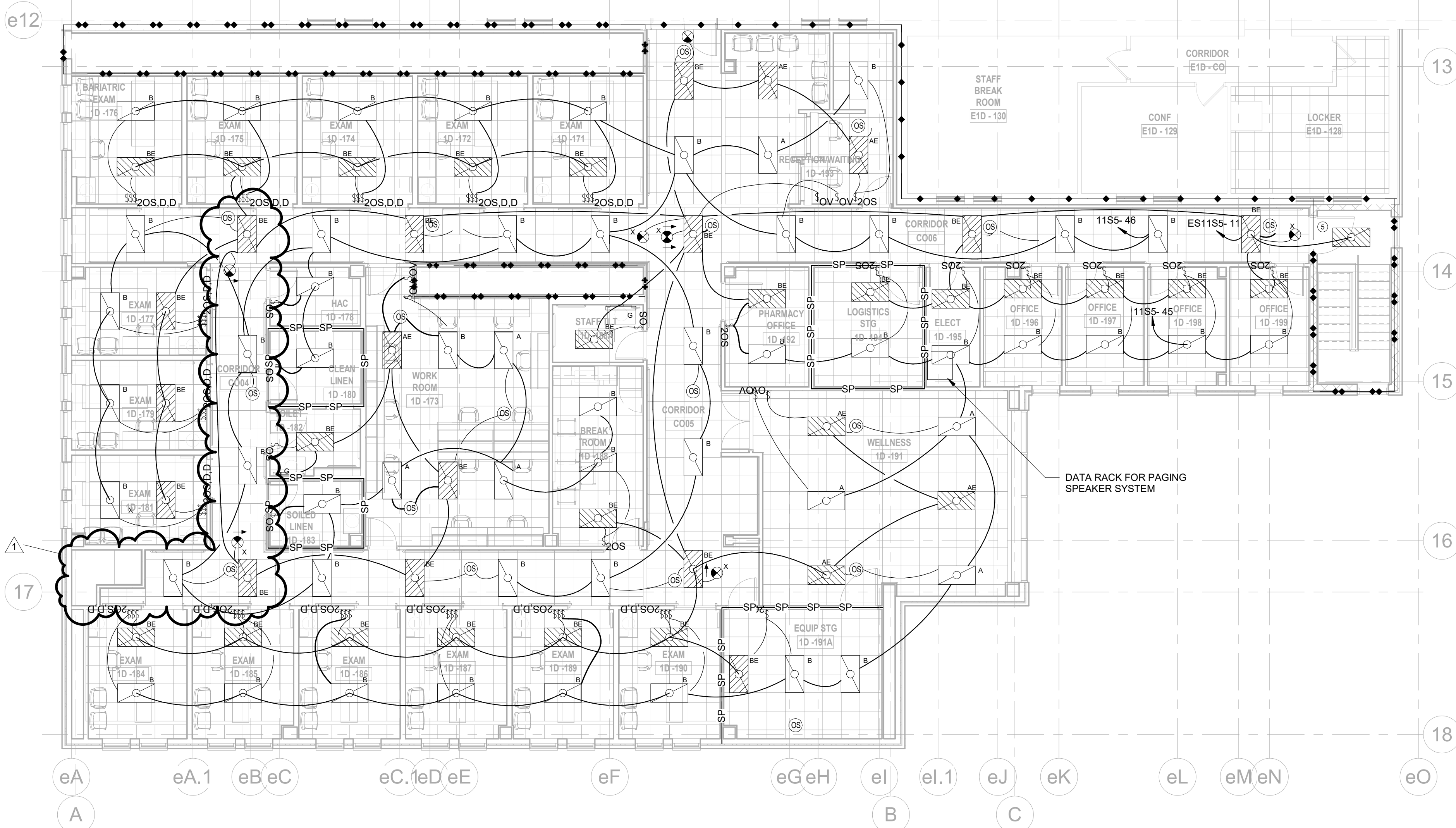
2 FIRST LEVEL - LIGHTING DEMOLITION PLAN
1/8" = 1'-0"



3 FIRST LEVEL - LIGHTING REMODEL PLAN
1/8" = 1'-0"



4 BASEMENT LEVEL - LIGHTING PLAN
1/8" = 1'-0"



5 FIRST LEVEL - LIGHTING PLAN
1/8" = 1'-0"

CONSTRUCTION DOCUMENTS

Revision Number Associated with Clouded Area

| | |
|-------------|----------|
| ADDENDUM #1 | 01/04/23 |
| Revisions: | Date |

CONSULTANTS:

Calibre
CALIBRE
9090 S RIDGELINE BLVD, SUITE 105
HIGHLANDS RANCH, COLORADO 80129
PHONE (303) 730-0434

Albertson Engineering Inc.
ALBERTSON ENGINEERING, INC.
315 NORTH MAIN AVENUE, SUITE 200
SIOUX FALLS, SOUTH DAKOTA 57104
PH: (605) 274-0880

SUMMIT
FIRE PROTECTION
SUMMIT FIRE CONSULTING
575 MINNEHAHA AVE WEST
ST. PAUL, MINNESOTA 55103
(612) 387-7050



ARCHITECT

FOURFRONT DESIGN INC.
FOURFRONT DESIGN, INC.
517 7TH STREET
RAPID CITY, SOUTH DAKOTA 57701
PH: (605) 342-9470
FAX: (605) 342-2377
WWW.FOURFRONTDESIGN.COM

Drawing Title

LIGHTING PLANS

Approved: Project Director

FARGO VAHCS

Project Title

EXPAND BLDG. 1 FOR
PRIMARY CARE

Location

2101 ELM STREET
FARGO, ND 58102

Date

11/16/21

Checked

RD

Drawn

JS

Project Number

437-315

Building Number

1

Drawing Number

E-300

Dwg. 100 of 128

Office of
Construction
and Facilities
Management

Department of
Veterans Affairs