

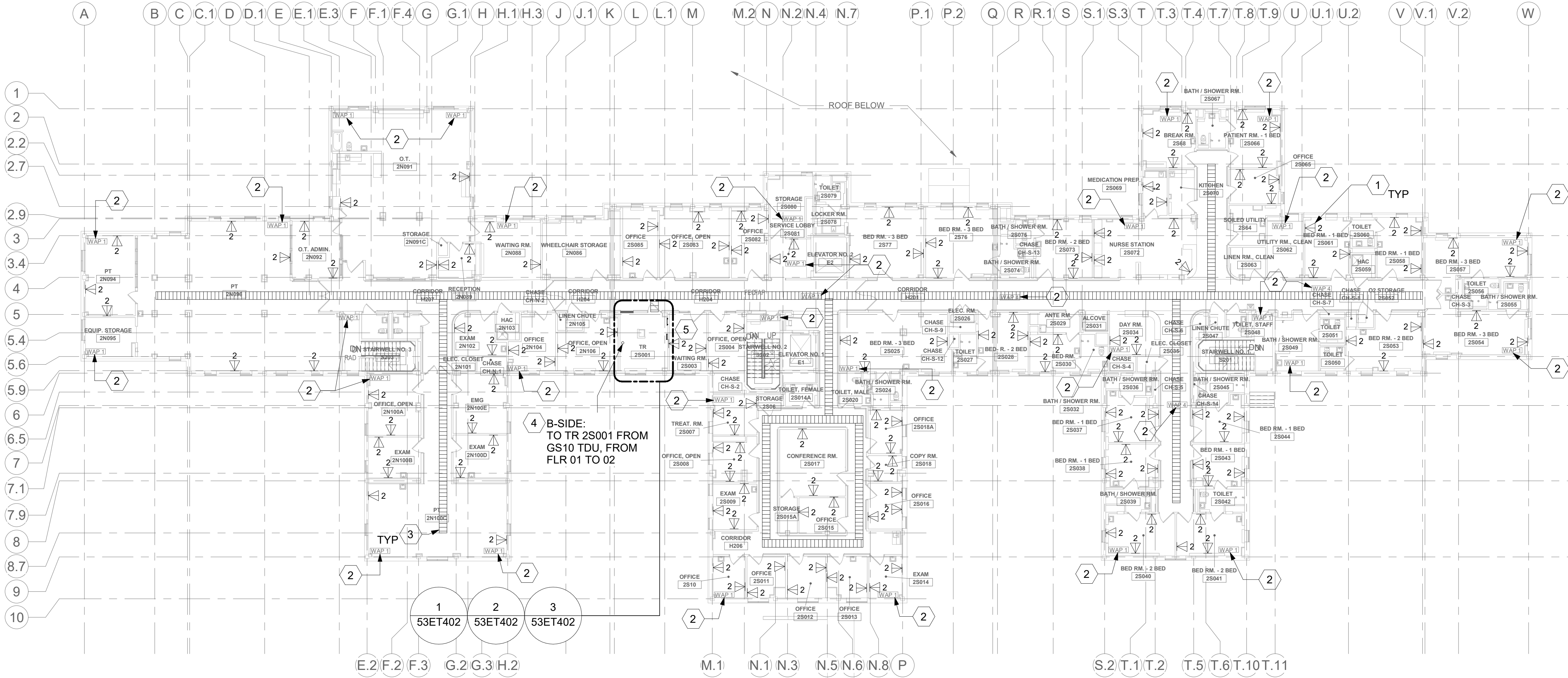
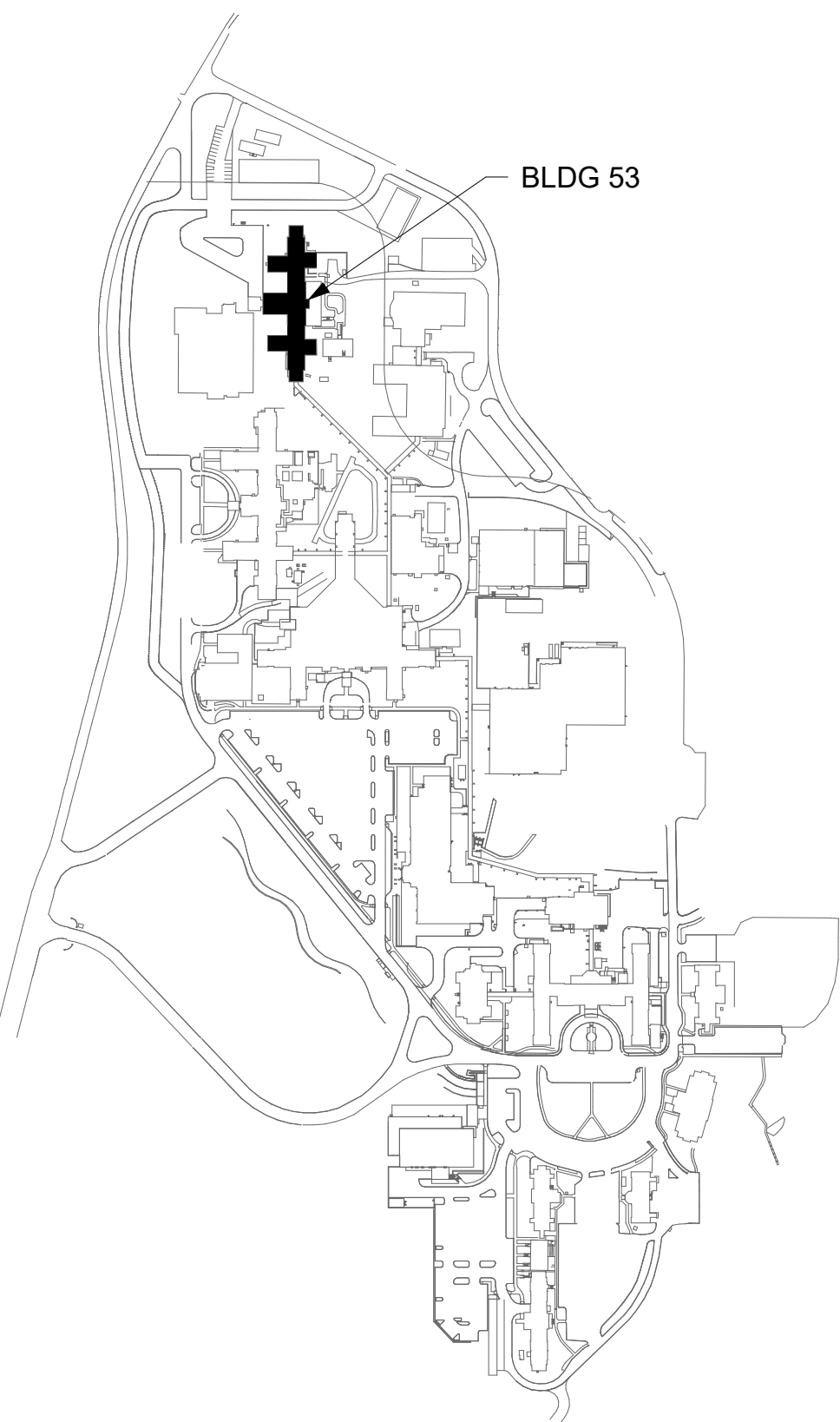
GENERAL NOTES

1. ALL EXISTING EQUIPMENT MAY NOT BE SHOWN FOR CLARITY. CONTRACTOR SHALL FIELD VERIFY ALL POWER AND SIGNAL DEVICES AND ASSOCIATED CIRCUITRY AS REQUIRED. ALL RACEWAYS AND CONDUCTORS ASSOCIATED WITH EQUIPMENT TO BE DEMOLISHED SHALL BE DEMOLISHED BACK TO THEIR SOURCE, UNLESS OTHERWISE NOTED.
2. PROTECT ALL EXISTING WORK FROM DAMAGE DURING CONSTRUCTION. ANY DAMAGED MATERIALS, SYSTEMS, COMPONENTS, FINISHES BE LIKE, SHALL BE REPAIRED OR REPLACED AT THE EXPENSE OF THE CONTRACTOR TO THE ACCEPTANCE OF THE OWNER.
3. SEAL ALL INTERIOR WALL AND CEILING PENETRATIONS TO MATCH EXISTING FIRE RATING OR NEW FIRE RATING, IF REQUIRED. COORDINATE WITH ARCHITECTURAL DRAWINGS AS REQUIRED.
4. ALL TELECOMMUNICATIONS CABLING CATEGORY 6 AND BELOW SHALL BE UPGRADED WITH CAT6A PORTS AND CABLE QUANTITIES INDICATED, UNLESS NOTED OTHERWISE.
5. TELECOMMUNICATIONS CABLES SHALL BE ROUTED IN EXISTING PATHWAY VACATED BY EXISTING CABLING. PROVIDE RACEWAYS TO EXTEND TO ASSOCIATED TR.
6. A TELECOMMUNICATIONS OUTLET UPGRADE SHALL INCLUDE, BUT IS NOT LIMITED TO REMOVING AND DISPOSING EXISTING DEVICES AND CABLES; PROVIDING ALL LABOR, MATERIALS, TOOLS, TEST INSTRUMENTS, AND CONSUMABLES REQUIRED FOR THE INSTALLATION, TERMINATION, TESTING, LABELING, AND CERTIFICATION OF A FULLY FUNCTIONAL CATEGORY 6A OUTLET WITH THE PORT QUANTITY INDICATED.
7. CONTRACTOR SHALL PROVIDE, INSTALL, AND TERMINATE HORIZONTAL CAT 6A CABLING FROM EACH WAO (WORK AREA OUTLET) TO ITS RESPECTIVE TR.
8. PROVIDE PULL BOXES SIZED PER ANSI/TIA-569 AT 100-FT INTERVALS IN STRAIGHT CONDUIT RUNS, OR CONDUIT CONTAINING BENDS TOTALING MORE THAN 180 DEGREES.
9. PROVIDE CONDUITS AND SLEEVES AS REQUIRED FOR ROUTING AND INSTALLATION OF HORIZONTAL AND BACKBONE CABLING. PROVIDE FIRE-STOP MATERIALS TO SEAL IN AND AROUND CONDUIT PER CODE. REFER TO ARCHITECTURAL DRAWINGS FOR PARTITION TYPES AND WALL HEIGHTS.
10. OUTLET LOCATIONS ARE APPROXIMATE. DETERMINE EXACT LOCATIONS IN FIELD; DOCUMENT VARIANCES ON AS-BUILT DRAWINGS.
11. CONTRACTOR SHALL BE RESPONSIBLE FOR RELOCATING FURNITURE, INCLUDING TRANSPORTATION, FOR ALL WORK TO DESIRED VA STORAGE LOCATION. COORDINATE WITH VA AS REQUIRED.
12. ALL DATA CABLING SHALL BE SEGREGATED FROM OTHER SPECIAL SYSTEMS INCLUDING, BUT NOT LIMITED TO, SECURITY, FIRE ALARM, AND NURSE CALL SYSTEMS. WHEN ROUTED THROUGH CONDUIT, DATA CABLING SHALL HAVE ITS OWN RACEWAY. WHEN DATA CABLING IS ROUTED THROUGH A COMMON SPECIAL SYSTEMS CABLE TRAY, CABLEING SHALL BE BUNDLED WITH LIKE SYSTEMS; ADDITIONALLY, CABLE TRAYS SHALL BE PROVIDED WITH TRAY DIVIDERS AS REQUIRED TO SEGREGATE SYSTEMS FROM ONE ANOTHER.
13. FIBER-OPTIC CABLING ROUTES AND ASSOCIATED RACEWAYS/ CABLE TRAY ARE DIAGRAMMATICAL. COORDINATE EXACT ROUTING WITH EXISTING CONDITIONS, ARCHITECTURAL FEATURES, MECHANICAL DUCTWORK, PIPING, EQUIPMENT, AND ANY OTHER OBSTRUCTIONS PRIOR TO INSTALLATION.

KEY NOTES




- 1 PROVIDE TELECOMMUNICATIONS OUTLET WITH PORT QUANTITY SHOWN TO REPLACE EXISTING TELECOMMUNICATIONS OUTLET; EXISTING OUTLET CONDUIT SHALL REMAIN AND BE UTILIZED TO FEED NEW CABLING; REFERENCE SHEET DETAIL '1' ON SHEET ET503 AND THE GENERAL NOTES ON THIS SHEET FOR ADDITIONAL INFORMATION. COORDINATE WITH VA FOR EXACT OUTLET PLACEMENT.
- 2 EXISTING WIRELESS ACCESS POINT RE-FED WITH CAT6A CABLING.
- 3 REMOVE AND REPLACE EXISTING CABLE TRAY IN THE AREAS SHOWN AS REQUIRED; IF CABLE TRAY IS NON-EXISTENT, PROVIDE CABLE TRAY AS INDICATED. REFERENCE DETAIL '6' ON SHEET ET503 AND TELECOMMUNICATIONS WAO AND CABLE TRAY SCHEDULE ON SHEET ET701. WHERE WALL EXTENDS TO CEILING, CABLE TRAY SHALL STOP AND TRANSITION TO CONDUIT SLEEVES (2" 4", MINIMUM) WITH APPROPRIATE FIRE-PROOFING AND CAULKING TO PASS THROUGH WALL. WHERE EXISTING CABLE TRAY AND/OR SLEEVES ARE DISCOVERED, EVALUATE CONDITION AND RACEWAY CAPACITY; IF CABLE TRAY AND/OR SLEEVES APPEAR TO BE REUSABLE, NOTIFY COR FOR POSSIBLE REUSE.
- 4 FIBER-OPTIC CABLE VERTICAL ROUTING; COORDINATE EXACT LOCATIONS PRIOR TO INSTALLATION. UTILIZE RIGID CONDUIT SLEEVES WITH FIRE PROOFING AND ALL REQUIRED APPURTENANCES AS REQUIRED. REFERENCE DETAIL 2 ON SHEET ET503 FOR ADDITIONAL INFORMATION.
- 5 UTILIZE EXISTING PACS SECURITY HEAD END LOCATION FOR NEW OR RELOCATED PACS SECURITY TR EQUIPMENT. UPGRADE OR MODIFY EXISTING HEAD END LOCATION AS REQUIRED TO PROVIDE A COMPLETE AND FULLY FUNCTIONAL TR PACS SECURITY SYSTEM. PROVIDE EQUIPMENT, RACEWAYS, AND CABLING AS REQUIRED. COORDINATE WITH VA PRIOR TO CONSTRUCTION. CONTRACTOR SHALL VERIFY EXACT HEAD END LOCATION AS REQUIRED.

KEY PLAN



1 BLDG 53 - FLOOR 2 - TELECOMMUNICATIONS PLAN
1/16" = 1'-0"



		CONSULTANT	ARCHITECT/ENGINEER OF RECORD <div>A/E: SPEES DESIGN BUILD 625 1ST AVE, STE 301 SEATTLE, WA 98104 (206) 590-2118 RAY SPEES</div> <div>SPEESDESIGNBUILD</div>	STAMP <div></div>	<div>Office of Construction and Facilities Management</div> <div>U.S. Department of Veterans Affairs</div>	Drawing Title BLDG 53 - FLOOR 2 - TELECOMMUNICATION PLAN	Phase CONSTRUCTION DOCUMENTS	Project Title EHRM INFRASTRUCTURE UPGRADES	Project Number 657-21-701JB
						Building Number 53			
						Drawing Number 53ET102			
						341 OF 435			
Revisions:		Date:							

A

B

C

D

E

F

A

B

C

D

E

F

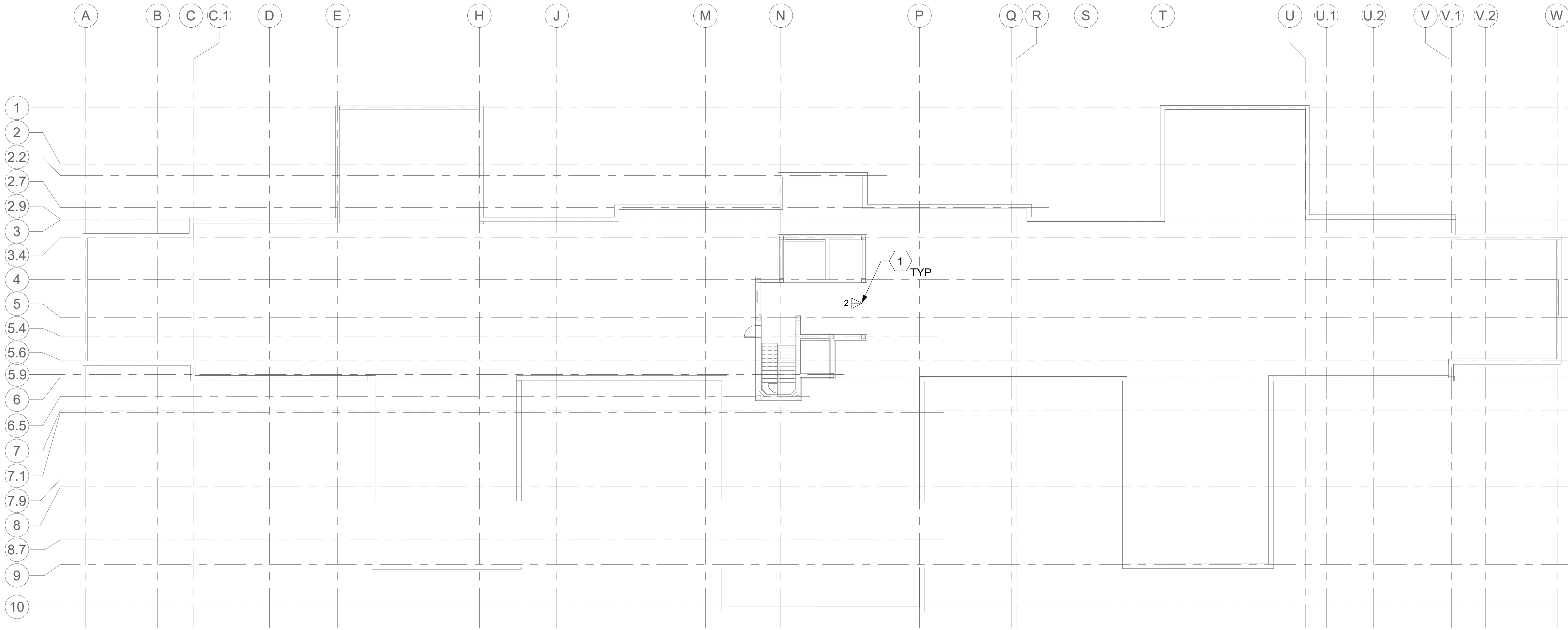
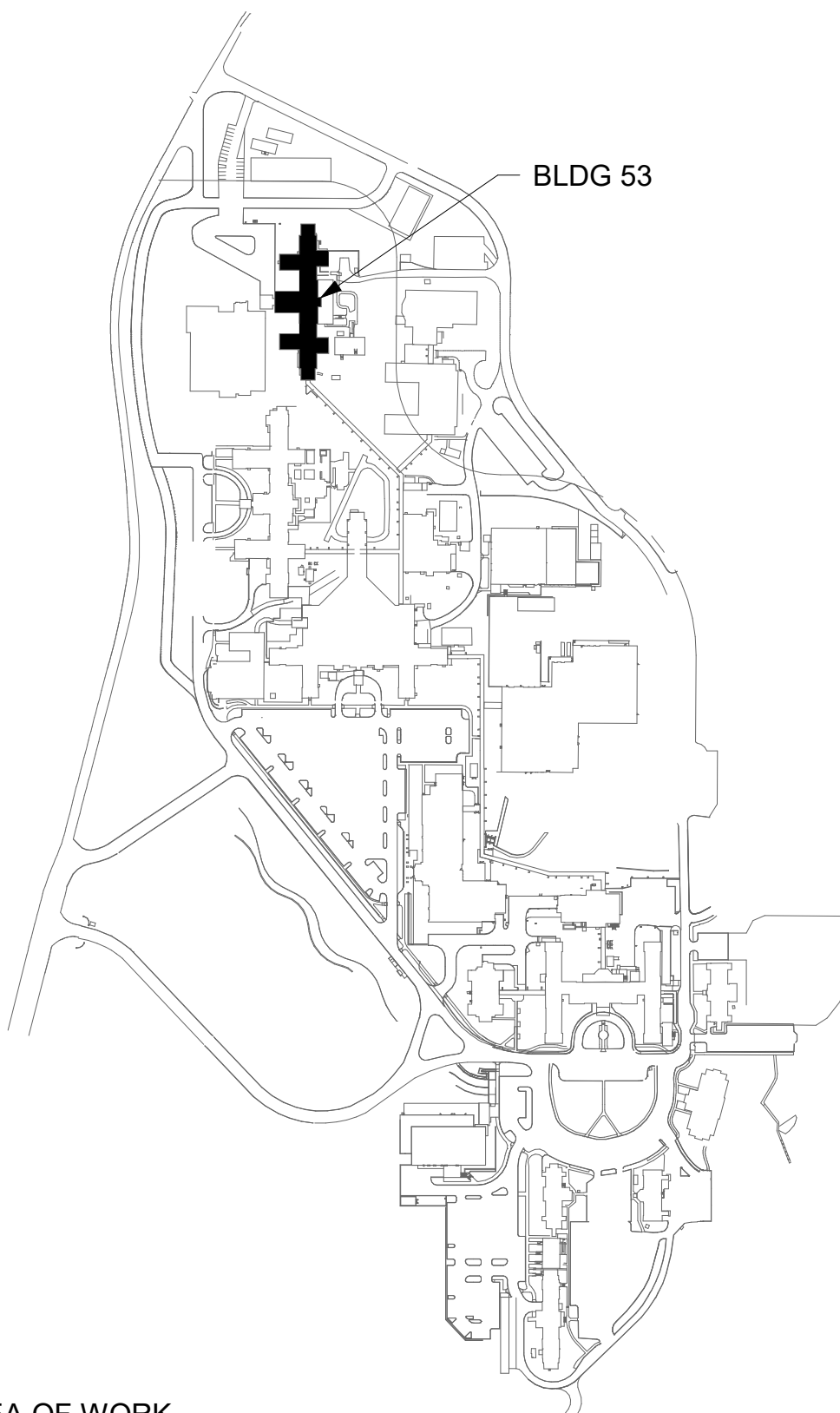
GENERAL NOTES

- ALL EXISTING EQUIPMENT MAY NOT BE SHOWN FOR CLARITY. CONTRACTOR SHALL FIELD VERIFY ALL POWER AND SIGNAL DEVICES AND ASSOCIATED CIRCUITRY AS REQUIRED. ALL RACEWAYS AND CONDUCTORS ASSOCIATED WITH EQUIPMENT TO BE DEMOLISHED SHALL BE DEMOLISHED BACK TO THEIR SOURCE, UNLESS OTHERWISE NOTED.
- PROTECT ALL EXISTING WORK FROM DAMAGE DURING CONSTRUCTION. ANY DAMAGED MATERIALS, SYSTEMS, COMPONENTS, FINISHES BE LIKE, SHALL BE REPAIRED OR REPLACED AT THE EXPENSE OF THE CONTRACTOR TO THE ACCEPTANCE OF THE OWNER.
- SEAL ALL INTERIOR WALL AND CEILING PENETRATIONS TO MATCH EXISTING FIRE RATING OR NEW FIRE RATING, IF REQUIRED. COORDINATE WITH ARCHITECTURAL DRAWINGS AS REQUIRED.
- ALL TELECOMMUNICATIONS CABLING CATEGORY 6 AND BELOW SHALL BE UPGRADED WITH CAT6A PORTS AND CABLE QUANTITIES INDICATED, UNLESS NOTED OTHERWISE.
- TELECOMMUNICATIONS CABLES SHALL BE ROUTED IN EXISTING PATHWAY VACATED BY EXISTING CABLING. PROVIDE RACEWAYS TO EXTEND TO ASSOCIATED TR.
- A TELECOMMUNICATIONS OUTLET UPGRADE SHALL INCLUDE, BUT IS NOT LIMITED TO REMOVING AND DISPOSING EXISTING DEVICES AND CABLES; PROVIDING ALL LABOR, MATERIALS, TOOLS, TEST INSTRUMENTS, AND CONSUMABLES REQUIRED FOR THE INSTALLATION, TERMINATION, TESTING, LABELING, AND CERTIFICATION OF A FULLY FUNCTIONAL CATEGORY 6A OUTLET WITH THE PORT QUANTITY INDICATED.
- CONTRACTOR SHALL PROVIDE, INSTALL, AND TERMINATE HORIZONTAL CAT 6A CABLING FROM EACH WAO (WORK AREA OUTLET) TO ITS RESPECTIVE TR.
- PROVIDE PULL BOXES SIZED PER ANSI/TIA-569 AT 100-FT INTERVALS IN STRAIGHT CONDUIT RUNS, OR CONDUIT CONTAINING BENDS TOTALING MORE THAN 180 DEGREES.
- PROVIDE CONDUITS AND SLEEVES AS REQUIRED FOR ROUTING AND INSTALLATION OF HORIZONTAL AND BACKBONE CABLING. PROVIDE STOP MATERIALS TO SEAL IN AND AROUND CONDUIT PER CODE. REFER TO ARCHITECTURAL DRAWINGS FOR PARTITION TYPES AND WALL HEIGHTS.
- OUTLET LOCATIONS ARE APPROXIMATE. DETERMINE EXACT LOCATIONS IN FIELD; DOCUMENT VARIANCES ON AS-BUILT DRAWINGS.
- CONTRACTOR SHALL BE RESPONSIBLE FOR RELOCATING FURNITURE, INCLUDING TRANSPORTATION, FOR ALL WORK TO DESIRED VA STORAGE LOCATION. COORDINATE WITH VA AS REQUIRED.
- ALL DATA CABLING SHALL BE SEGREGATED FROM OTHER SPECIAL SYSTEMS INCLUDING, BUT NOT LIMITED TO, SECURITY, FIRE ALARM, AND NURSE CALL SYSTEMS. WHEN ROUTED THROUGH CONDUIT, DATA CABLING SHALL HAVE ITS OWN RACEWAY. WHEN IS ROUTED THROUGH A COMMON SPECIAL SYSTEMS CABLE TRAY, CABLING SHALL BE BUNDLED WITH LIKE SYSTEMS; ADDITIONALLY, CABLE TRAYS SHALL BE PROVIDED WITH TRAY DIVIDERS AS REQUIRED TO SEGREGATE SYSTEMS FROM ONE ANOTHER.
- FIBER-OPTIC CABLING ROUTES AND ASSOCIATED RACEWAYS/ CABLE TRAY ARE DIAGMMATICAL. COORDINATE EXACT ROUTING WITH EXISTING CONDITIONS. ARCHITECTURAL FEATURES, MECHANICAL DUCTWORK, PIPING, EQUIPMENT, AND ANY OTHER OBSTRUCTIONS PRIOR TO INSTALLATION.

KEY NOTES

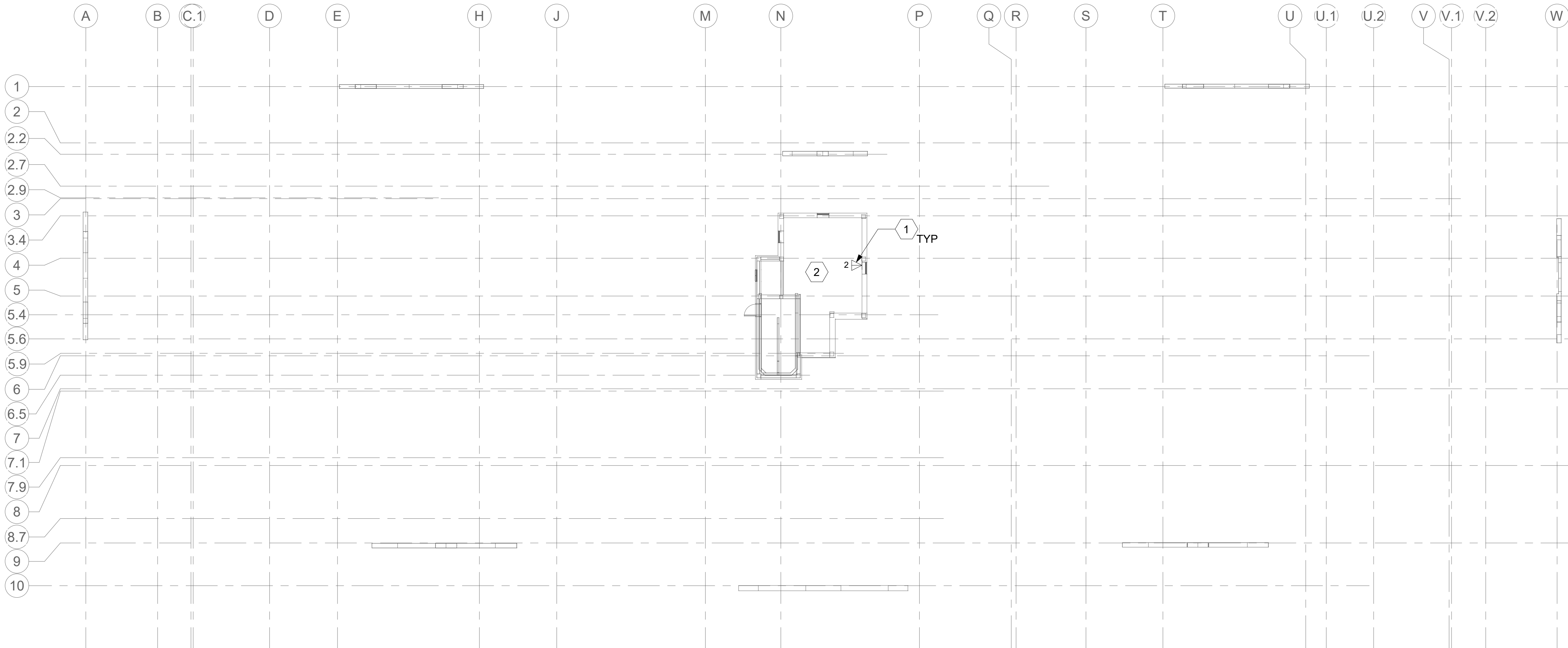
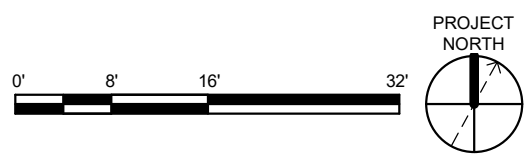
- PROVIDE TELECOMMUNICATIONS OUTLET WITH PORT QUANTITY SHOWN TO REPLACE EXISTING TELECOMMUNICATIONS OUTLET; EXISTING OUTLET CONDUIT SHALL REMAIN AND BE UTILIZED TO FEED NEW CABLING; REFERENCE SHEET DETAIL '1' ON SHEET ET503 AND THE GENERAL NOTES ON THIS SHEET FOR ADDITIONAL INFORMATION. COORDINATE WITH VA FOR EXACT OUTLET PLACEMENT.
- UTILIZE EXISTING PACS SECURITY HEAD END LOCATION FOR NEW OR RELOCATED PACS SECURITY TR EQUIPMENT. UPGRADE OR MODIFY EXISTING HEAD END LOCATION AS REQUIRED TO PROVIDE A COMPLETE AND FULLY FUNCTIONAL TR PACS SECURITY SYSTEM. PROVIDE EQUIPMENT, RACEWAYS, AND CABLING AS REQUIRED. COORDINATE WITH VA PRIOR TO CONSTRUCTION. CONTRACTOR SHALL VERIFY EXACT HEAD END LOCATION AS REQUIRED.

KEY PLAN



1 BLDG 53-PENTHOUSE 01 TELECOMMUNICATIONS PLAN

1/16" = 1'-0"



2 BLDG 53-PENTHOUSE 02 TELECOMMUNICATIONS PLAN

1/16" = 1'-0"



Revisions:	Date:

CONSULTANT

ARCHITECT/ENGINEER OF RECORD

A/E:
SPEES DESIGN BUILD
625 1ST AVE, STE 301
SEATTLE, WA 98104
(206) 590-2118
RAY SPEES



STAMP



Office of
Construction
and Facilities
Management



Drawing Title
BLDG 53 - PENTHOUSE
TELECOMMUNICATION PLAN

Approved:

Phase
CONSTRUCTION
DOCUMENTS

FULLY SPRINKLERED

Project Title
EHRM INFRASTRUCTURE
UPGRADES

Location
ST. LOUIS VA MEDICAL CENTER - JEFFERSON BARRACKS, MO

Issue Date
03/31/2022

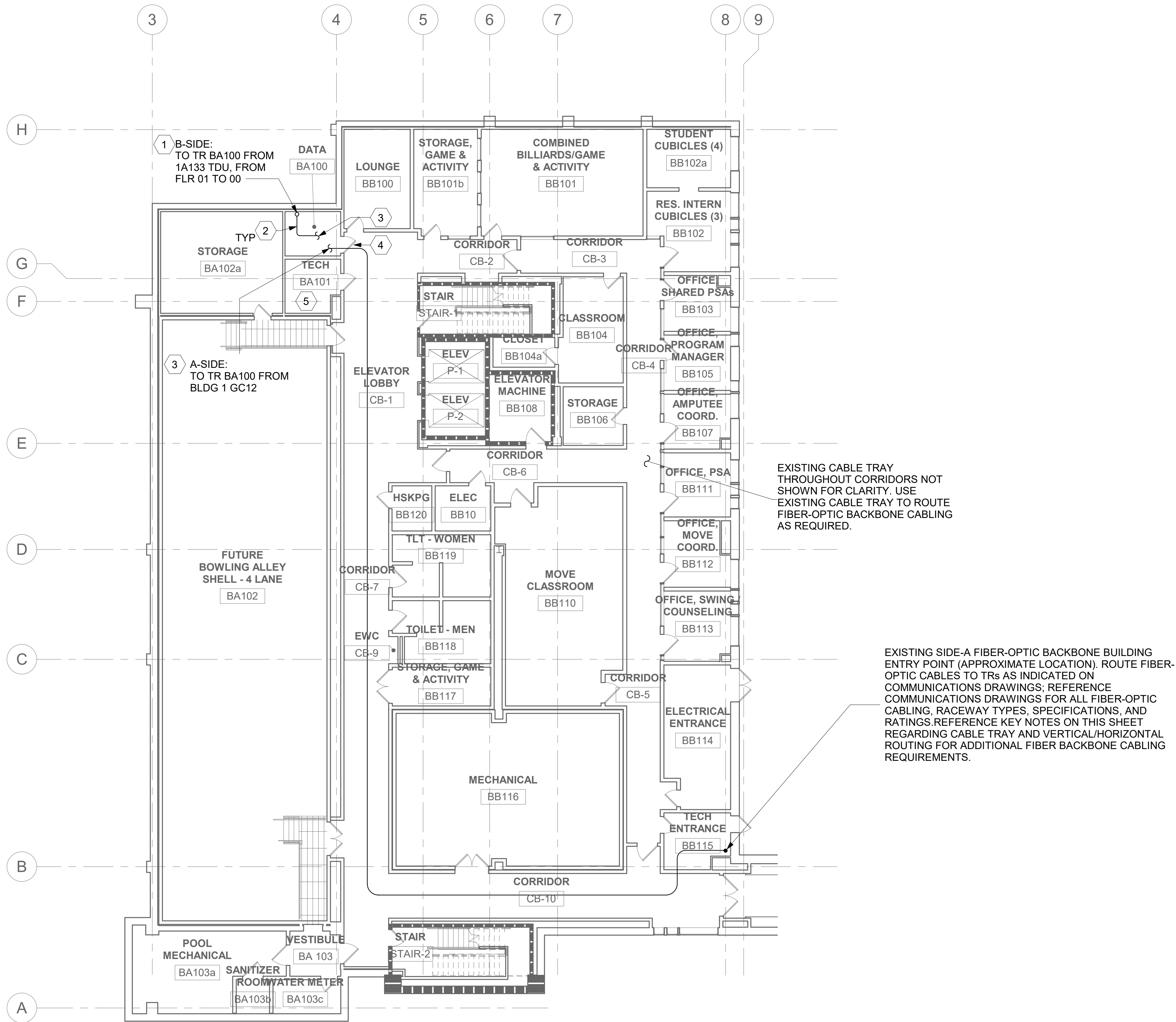
Checked
LRL/WM

Drawn
JGE/JBB

Project Number
657-21-701JB
Building Number
53

Drawing Number
53ET103

342 OF 435



ALL BACKBONE CABLING ROUTES ARE DIAGRAMMATICAL;
CONTRACTOR SHALL ENSURE A-SIDE AND B-SIDE ROUTING IS
AS DIVERSE AS PRACTICAL. REFERENCE COMMUNICATIONS
DRAWINGS FOR ALL REQUIRED FIBER-OPTIC CABLING.

1 BLDG 54 - FLOOR 0 - TELECOMMUNICATIONS PLAN
3/32" = 1'-0"

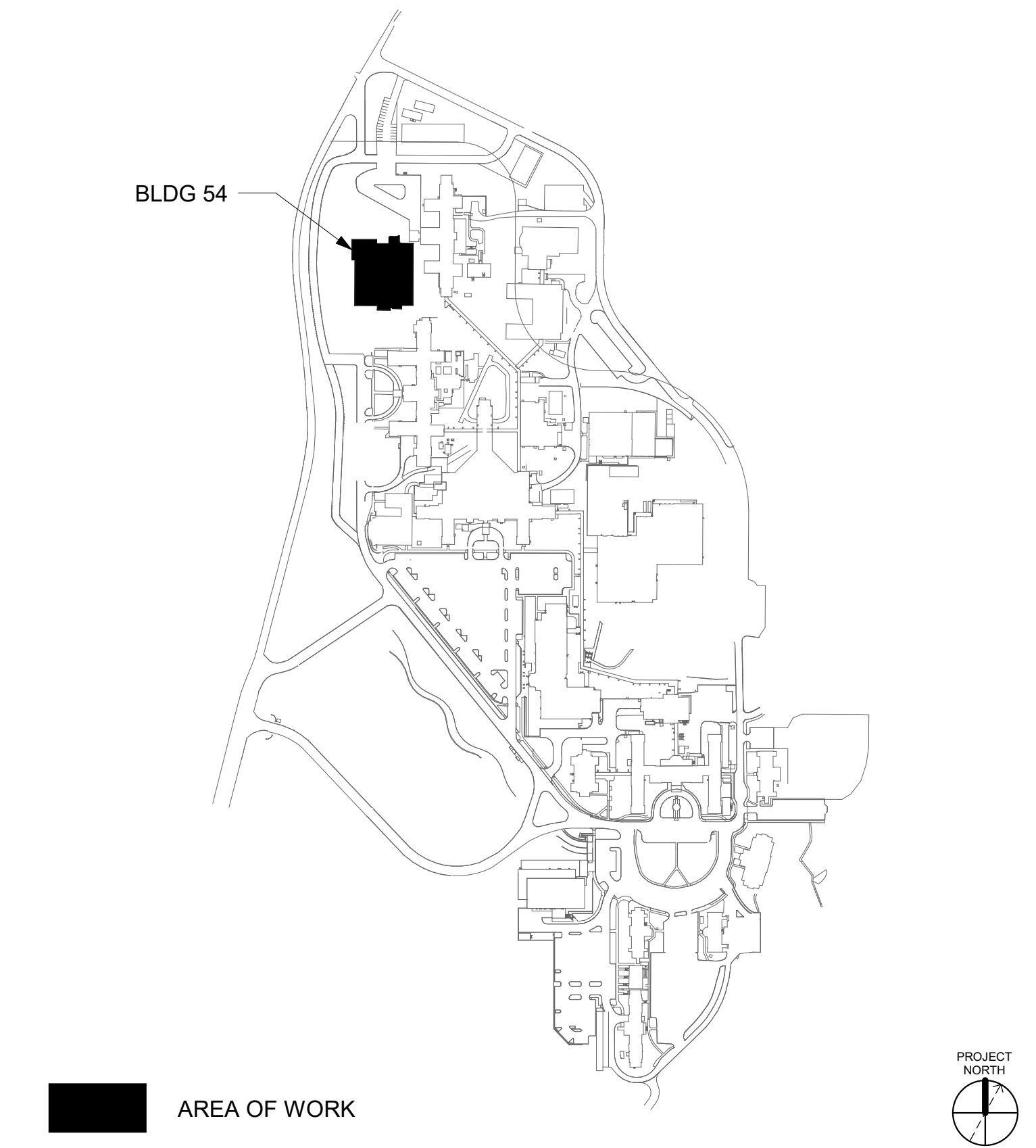
GENERAL NOTES



- ALL EXISTING EQUIPMENT MAY NOT BE SHOWN FOR CLARITY. CONTRACTOR SHALL FIELD VERIFY ALL POWER AND SIGNAL DEVICES AND ASSOCIATED CIRCUITRY AS REQUIRED. ALL RACEWAYS AND CONDUCTORS ASSOCIATED WITH EQUIPMENT TO BE DEMOLISHED SHALL BE DEMOLISHED BACK TO THEIR SOURCE, UNLESS OTHERWISE NOTED.
- PROTECT ALL EXISTING WORK FROM DAMAGE DURING CONSTRUCTION. ANY DAMAGED MATERIALS, SYSTEMS, COMPONENTS, FINISHES BE LIKE, SHALL BE REPAIRED OR REPLACED AT THE EXPENSE OF THE CONTRACTOR TO THE ACCEPTANCE OF THE OWNER.
- SEAL ALL INTERIOR WALL AND CEILING PENETRATIONS TO MATCH EXISTING FIRE RATING OR NEW FIRE RATING, IF REQUIRED. COORDINATE WITH ARCHITECTURAL DRAWINGS AS REQUIRED.
- TELECOMMUNICATIONS CABLES SHALL BE ROUTED IN EXISTING PATHWAY VACATED BY EXISTING CABLING. PROVIDE RACEWAYS TO EXTEND TO ASSOCIATED TR.
- PROVIDE PULL BOXES SIZED PER ANSI/TIA-569 AT 100-FT INTERVALS IN STRAIGHT CONDUIT RUNS, OR CONDUIT CONTAINING BENDS TOTALING MORE THAN 180 DEGREES.
- PROVIDE CONDUITS AND SLEEVES AS REQUIRED FOR ROUTING AND INSTALLATION OF HORIZONTAL AND BACKBONE CABLING. PROVIDE FIRE-STOP MATERIALS TO SEAL IN AND AROUND CONDUIT PER CODE. REFER TO ARCHITECTURAL DRAWINGS FOR PARTITION TYPES AND WALL HEIGHTS.
- CONTRACTOR SHALL BE RESPONSIBLE FOR RELOCATING FURNITURE, INCLUDING TRANSPORTATION, FOR ALL WORK TO DESIRED VA STORAGE LOCATION. COORDINATE WITH VA AS REQUIRED.
- ALL DATA CABLING SHALL BE SEGREGATED FROM OTHER SPECIAL SYSTEMS INCLUDING, BUT NOT LIMITED TO, SECURITY, FIRE ALARM, AND NURSE CALL SYSTEMS. WHEN ROUTED THROUGH CONDUIT, DATA CABLING SHALL HAVE ITS OWN RACEWAY. WHEN DATA CABLING IS ROUTED THROUGH A COMMON SPECIAL SYSTEMS CABLE TRAY, CABLING SHALL BE BUNDLED WITH LIKE SYSTEMS; ADDITIONALLY, CABLE TRAYS SHALL BE PROVIDED WITH TRAY DIVIDERS AS REQUIRED TO SEGREGATE SYSTEMS FROM ONE ANOTHER.
- FIBER-OPTIC CABLING ROUTES AND ASSOCIATED RACEWAYS/CABLE TRAY ARE DIAGRAMMATICAL. COORDINATE EXACT ROUTING WITH EXISTING CONDITIONS, ARCHITECTURAL FEATURES, MECHANICAL DUCTWORK, PIPING, EQUIPMENT, AND ANY OTHER OBSTRUCTIONS PRIOR TO INSTALLATION.

KEY NOTES

- FIBER-OPTIC CABLE VERTICAL ROUTING; COORDINATE EXACT LOCATIONS PRIOR TO INSTALLATION. UTILIZE RIGID CONDUIT SLEEVES WITH FIRE PROOFING AND ALL REQUIRED APPURTENANCES AS REQUIRED. REFERENCE DETAIL 2 ON SHEET ET503 FOR ADDITIONAL INFORMATION.
- FIBER-OPTIC CABLE HORIZONTAL ROUTING SHALL BE CONCEALED ABOVE DROP CEILING WHEREVER POSSIBLE. UTILIZE CABLE TRAY AS APPLICABLE. PROVIDE CONDUIT SLEEVES WITH FIREPROOFING AS REQUIRED WHERE WALL PENETRATIONS ARE REQUIRED. REFERENCE DETAIL 2 ON SHEET ET503 FOR ADDITIONAL INFORMATION.
- TERMINATE B-SIDE FIBER-OPTIC CABLE TO EXISTING TR RACK AS REQUIRED.
- CONTRACTOR SHALL ASSUME AT LEAST 10 LINEAR-FEET OF EXISTING CABLE TRAY WILL BE REQUIRED TO BE MODIFIED/REPLACED AT EACH TR.
- UTILIZE EXISTING PACS SECURITY HEAD END LOCATION FOR NEW OR RELOCATED PACS SECURITY TR EQUIPMENT. UPGRADE OR MODIFY EXISTING HEAD END LOCATION AS REQUIRED TO PROVIDE A COMPLETE AND FULLY FUNCTIONAL TR PACS SECURITY SYSTEM. PROVIDE EQUIPMENT, RACEWAYS, AND CABLING AS REQUIRED. COORDINATE WITH VA PRIOR TO CONSTRUCTION. CONTRACTOR SHALL VERIFY EXACT HEAD END LOCATION AS REQUIRED.

KEY PLAN



		CONSULTANT	ARCHITECT/ENGINEER OF RECORD	STAMP	Office of Construction and Facilities Management VA U.S. Department of Veterans Affairs	Drawing Title	Phase	Project Title	Project Number		
			A/E: SPEES DESIGN BUILD 625 1ST AVE, STE 301 SEATTLE, WA 98104 (206) 590-2118 RAY SPEES			BLDG 54 - FLOOR 0 - TELECOMMUNICATIONS PLAN	CONSTRUCTION DOCUMENTS	EHRM INFRASTRUCTURE UPGRADES	657-21-701JB		
						Approved:	FULLY SPRINKLERED	Location ST. LOUIS VA MEDICAL CENTER - JEFFERSON BARRACKS, MO	Building Number 54	Drawing Number 54ET100	
								Issue Date 03/31/2022	Checked LRL/WM	Drawn JGE/JBB	344 OF 435
Revisions:		Date:									

- 1 FIBER-OPTIC CABLE VERTICAL ROUTING; COORDINATE EXACT LOCATIONS PRIOR TO INSTALLATION. UTILIZE RIGID CONDUIT SLEEVES WITH FIRE PROOFING AND ALL REQUIRED APPURTENANCES AS REQUIRED. REFERENCE DETAIL 2 ON SHEET ET503 FOR ADDITIONAL INFORMATION.
- 2 FIBER-OPTIC CABLE HORIZONTAL ROUTING SHALL BE CONCEALED ABOVE DROP CEILING WHEREVER POSSIBLE. UTILIZE CABLE TRAY AS APPLICABLE. PROVIDE CONDUIT SLEEVES WITH FIREPROOFING AS REQUIRED WHERE WALL PENETRATIONS ARE REQUIRED. REFERENCE DETAIL 2 ON SHEET ET503 FOR ADDITIONAL INFORMATION.
- 3 TUBE DISTRIBUTION UNIT (TDU). REFERENCE COMMUNICATION DRAWINGS FOR ADDITIONAL INFORMATION.
- 4 TERMINATE A-SIDE AND B-SIDE FIBER-OPTIC CABLE TO EXISTING TR RACK AS REQUIRED.
- 5 CONTRACTOR SHALL ASSUME AT LEAST 10 LINEAR-FEET OF EXISTING CABLE TRAY WILL BE REQUIRED TO BE MODIFIED/REPLACED AT EACH TR.
- 6 UTILIZE EXISTING PACS SECURITY HEAD END LOCATION FOR NEW OR RELOCATED PACS SECURITY TR EQUIPMENT. UPGRADE OR MODIFY EXISTING HEAD END LOCATION AS REQUIRED TO PROVIDE A COMPLETE AND FULLY FUNCTIONAL TR PACS SECURITY SYSTEM. PROVIDE EQUIPMENT, RACEWAYS, AND CABLEING AS REQUIRED. COORDINATE WITH VA PRIOR TO CONSTRUCTION. CONTRACTOR SHALL VERIFY EXACT HEAD END LOCATION AS REQUIRED.

BLDG 54

AREA OF WORK

PROJECT NORTH

1 BLDG 54 - FLOOR 1 - TELECOMMUNICATIONS PLAN
1/16" = 1'-0" 0 8 16 32

[illegible]

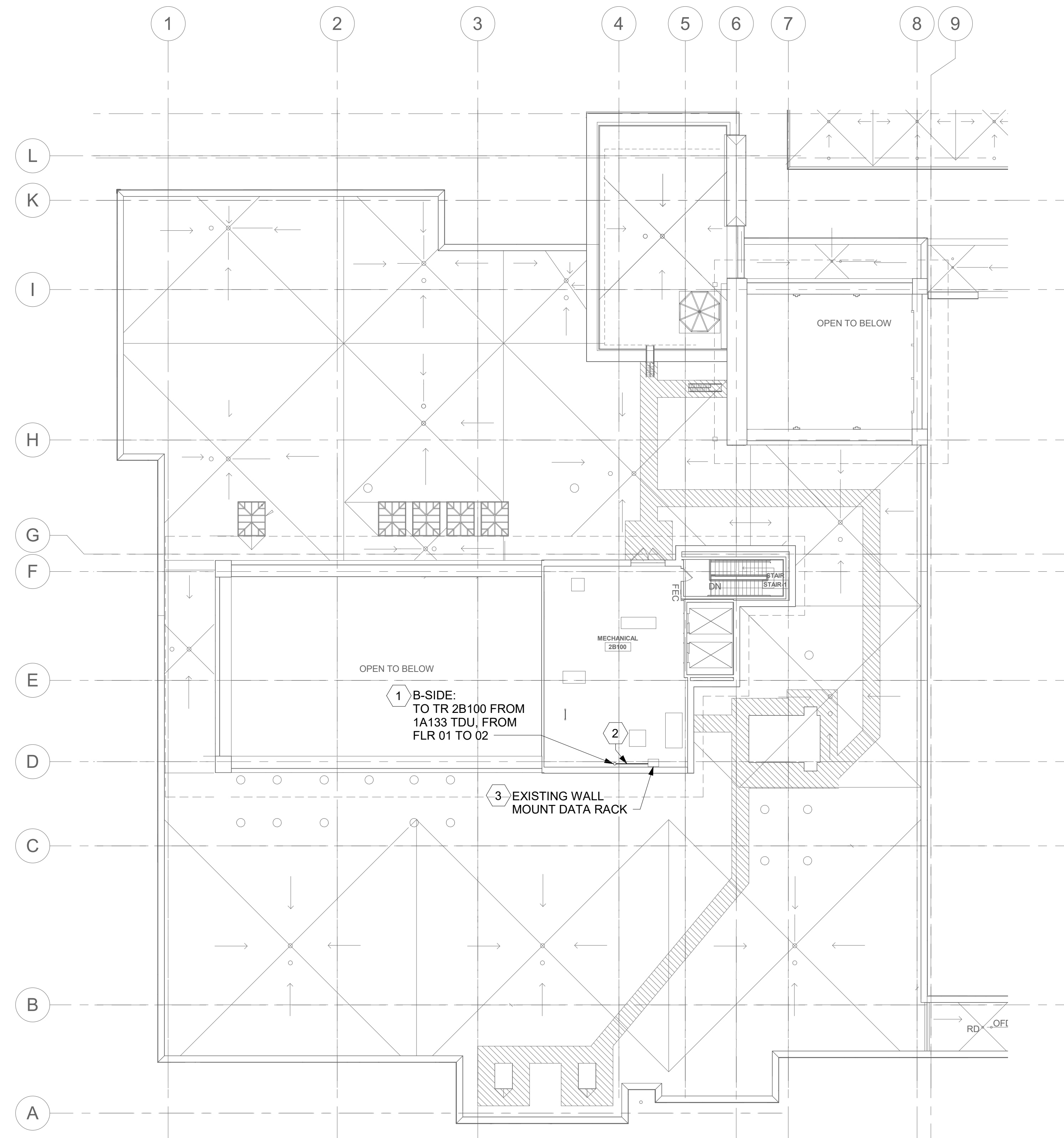
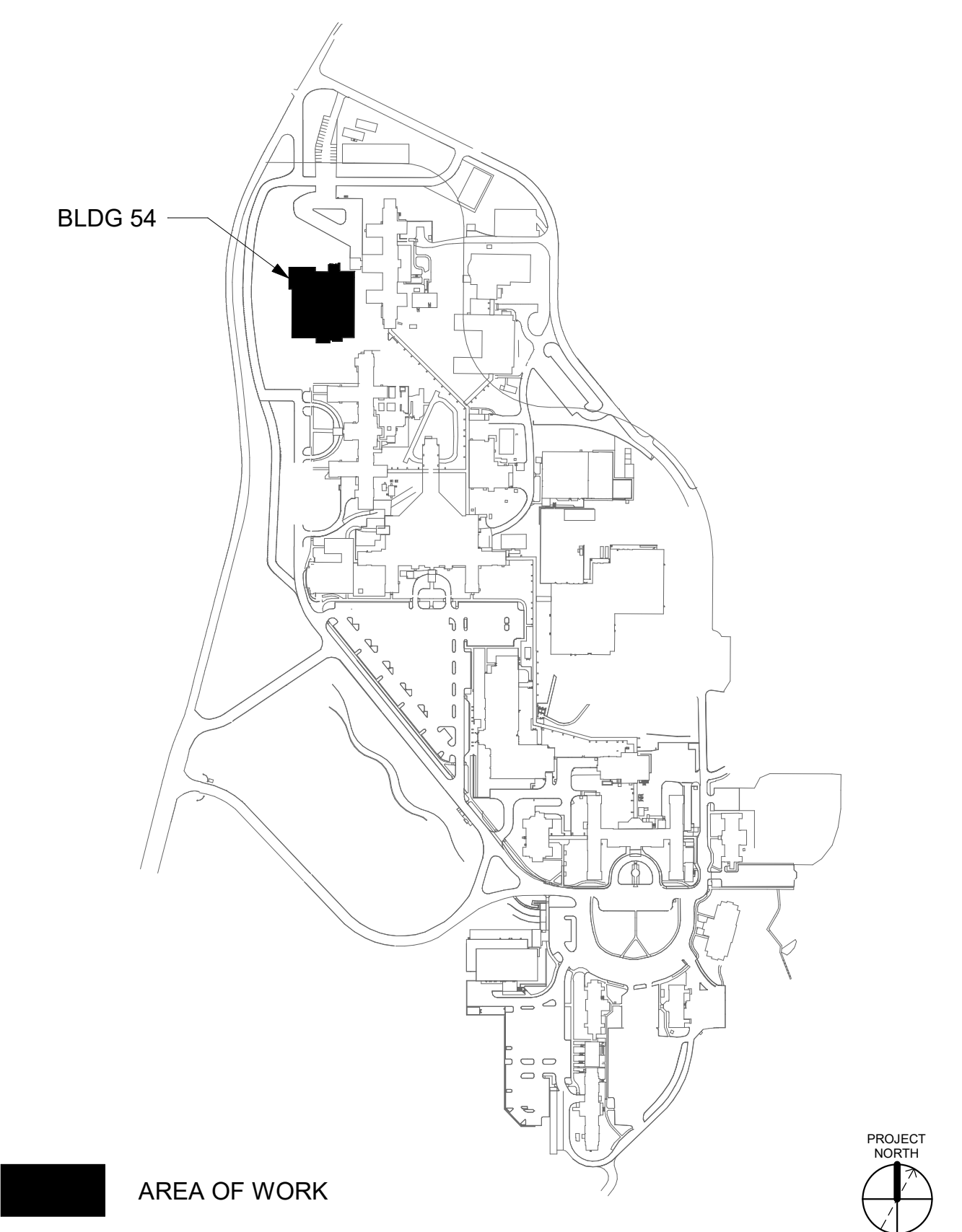
GENERAL NOTES

1. ALL EXISTING EQUIPMENT MAY NOT BE SHOWN FOR CLARITY. CONTRACTOR SHALL FIELD VERIFY ALL POWER AND SIGNAL DEVICES AND ASSOCIATED CIRCUITRY AS REQUIRED. ALL RACEWAYS AND CONDUCTORS ASSOCIATED WITH EQUIPMENT TO BE DEMOLISHED SHALL BE DEMOLISHED BACK TO THEIR SOURCE, UNLESS OTHERWISE NOTED.
2. PROTECT ALL EXISTING WORK FROM DAMAGE DURING CONSTRUCTION. ANY DAMAGED MATERIALS, SYSTEMS, COMPONENTS, FINISHES BE LIKE, SHALL BE REPAIRED OR REPLACED AT THE EXPENSE OF THE CONTRACTOR TO THE ACCEPTANCE OF THE OWNER.
3. SEAL ALL INTERIOR WALL AND CEILING PENETRATIONS TO MATCH EXISTING FIRE RATINGS OR NEW FIRE RATING, IF REQUIRED. COORDINATE WITH ARCHITECTURAL DRAWINGS AS REQUIRED.
4. TELECOMMUNICATIONS CABLES SHALL BE ROUTED IN EXISTING PATHWAY VACATED BY EXISTING CABLING. PROVIDE RACEWAYS TO EXTEND TO ASSOCIATED TR.
5. PROVIDE PULL BOXES SIZED PER ANSI/TIA-568 AT 100-FT INTERVALS IN STRAIGHT CONDUIT RUNS, OR CONDUIT CONTAINING BENDS TOTALING MORE THAN 180 DEGREES.
6. PROVIDE CONDUITS AND SLEEVES AS REQUIRED FOR ROUTING AND INSTALLATION OF HORIZONTAL AND BACKBONE CABLING. PROVIDE FIRE-STOP MATERIALS TO SEAL IN AND AROUND CONDUIT PER CODE. REFER TO ARCHITECTURAL DRAWINGS FOR PARTITION TYPES AND WALL HEIGHTS.
7. CONTRACTOR SHALL BE RESPONSIBLE FOR RELOCATING FURNITURE, INCLUDING TRANSPORTATION, FOR ALL WORK TO DESIRED VA STORAGE LOCATION. COORDINATE WITH VA AS REQUIRED.
8. ALL DATA CABLING SHALL BE SEGREGATED FROM OTHER SPECIAL SYSTEMS INCLUDING, BUT NOT LIMITED TO, SECURITY, FIRE ALARM, AND NURSE CALL SYSTEMS. WHEN ROUTED THROUGH CONDUIT, DATA CABLING SHALL HAVE ITS OWN RACEWAY. WHEN DATA CABLING IS ROUTED THROUGH A COMMON SPECIAL SYSTEMS CABLE TRAY, CABLING SHALL BE BUNDLED WITH LIKE SYSTEMS; ADDITIONALLY, CABLE TRAYS SHALL BE PROVIDED WITH TRAY DIVIDERS AS REQUIRED TO SEGREGATE SYSTEMS FROM ONE ANOTHER.
9. FIBER-OPTIC CABLING ROUTES AND ASSOCIATED RACEWAYS/CABLE TRAY ARE DIAGRAMMATICAL. COORDINATE EXACT ROUTING WITH EXISTING CONDITIONS, ARCHITECTURAL FEATURES, MECHANICAL DUCTWORK, PIPING, EQUIPMENT, AND ANY OTHER OBSTRUCTIONS PRIOR TO INSTALLATION.

KEY NOTES

- 1 FIBER-OPTIC CABLE VERTICAL ROUTING; COORDINATE EXACT LOCATIONS PRIOR TO INSTALLATION. UTILIZE RIGID CONDUIT SLEEVES WITH FIRE PROOFING AND ALL REQUIRED APPURTENANCES AS REQUIRED. REFERENCE DETAIL 2 ON SHEET ET503 FOR ADDITIONAL INFORMATION.
- 2 FIBER-OPTIC CABLE HORIZONTAL ROUTING SHALL BE CONCEALED ABOVE DROP CEILING WHEREVER POSSIBLE. UTILIZE CABLE TRAY AS APPLICABLE. PROVIDE CONDUIT SLEEVE WITH FIREPROOFING AS REQUIRED WHERE WALL PENETRATIONS ARE REQUIRED. REFERENCE DETAIL 2 ON SHEET ET503 FOR ADDITIONAL INFORMATION.
- 3 TERMINATE B-SIDE FIBER-OPTIC CABLE TO EXISTING WALL MOUNTED DATA RACK AS REQUIRED.

KEY PLAN



**ALL BACKBONE CABLING ROUTES ARE DIAGRAMMATICAL;
CONTRACTOR SHALL ENSURE A-SIDE AND B-SIDE ROUTING IS
AS DIVERSE AS PRACTICAL. REFERENCE COMMUNICATIONS
DRAWINGS FOR ALL REQUIRED FIBER-OPTIC CABLING.**

BLDG 54 - FLOOR 2 - TELECOMMUNICATIONS PLAN

1/16" = 1'-0"

[illegible]

A

B

C

D

E

F

A

B

C

D

E

F

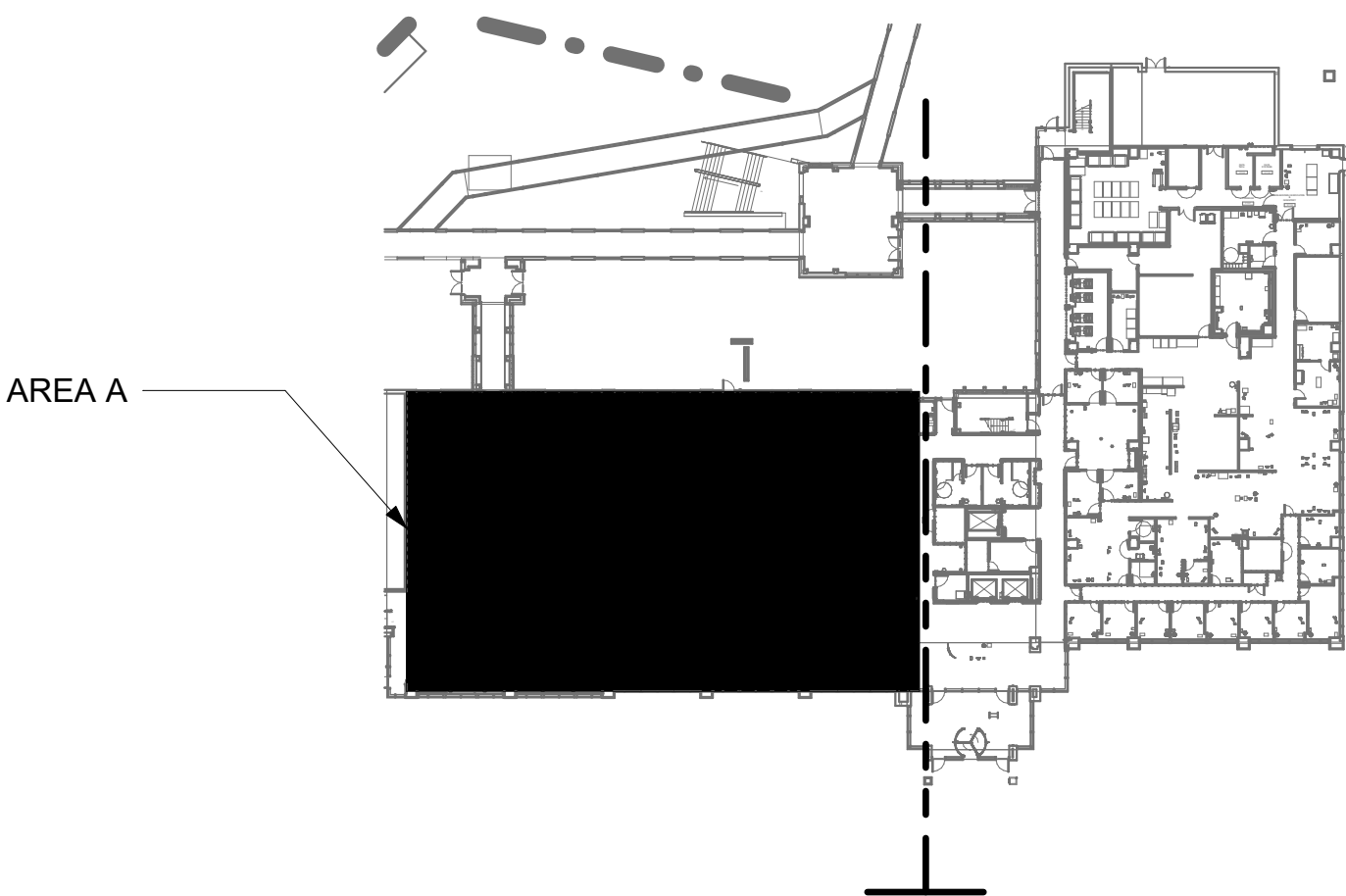
GENERAL NOTES

- ALL EXISTING EQUIPMENT MAY NOT BE SHOWN FOR CLARITY. CONTRACTOR SHALL FIELD VERIFY ALL POWER AND SIGNAL DEVICES AND ASSOCIATED CIRCUITRY AS REQUIRED. ALL RACEWAYS AND CONDUCTORS ASSOCIATED WITH EQUIPMENT TO BE DEMOLISHED SHALL BE DEMOLISHED BACK TO THEIR SOURCE, UNLESS OTHERWISE NOTED.
- PROTECT ALL EXISTING WORK FROM DAMAGE DURING CONSTRUCTION. ANY DAMAGED MATERIALS, SYSTEMS, COMPONENTS, FINISHES BE LIKE, SHALL BE REPAIRED OR REPLACED AT THE EXPENSE OF THE CONTRACTOR TO THE ACCEPTANCE OF THE OWNER.
- SEAL ALL INTERIOR WALL AND CEILING PENETRATIONS TO MATCH EXISTING FIRE RATING OR NEW FIRE RATING, IF REQUIRED. COORDINATE WITH ARCHITECTURAL DRAWINGS AS REQUIRED.
- ALL TELECOMMUNICATIONS CABLING CATEGORY 6 AND BELOW SHALL BE UPGRADED WITH CAT6A PORTS AND CABLE QUANTITIES INDICATED, UNLESS NOTED OTHERWISE.
- TELECOMMUNICATIONS CABLES SHALL BE ROUTED IN EXISTING PATHWAY VACATED BY EXISTING CABLING AS CONDUIT FILL ALLOWS. PROVIDE RACEWAYS TO EXTEND TO ASSOCIATED TR AS REQUIRED.
- A TELECOMMUNICATIONS OUTLET UPGRADE SHALL INCLUDE, BUT IS NOT LIMITED TO REMOVING AND DISPOSING EXISTING DEVICES AND CABLES; PROVIDING ALL LABOR, MATERIALS, TOOLS, TEST INSTRUMENTS, AND CONSUMABLES REQUIRED FOR THE INSTALLATION, TERMINATION, TESTING, LABELING, AND CERTIFICATION OF A FULLY FUNCTIONAL CATEGORY 6A OUTLET WITH THE PORT QUANTITY INDICATED.
- CONTRACTOR SHALL PROVIDE, INSTALL, AND TERMINATE HORIZONTAL CAT 6A CABLING FROM EACH WAO (WORK AREA OUTLET) TO ITS RESPECTIVE TR.
- PROVIDE PULL BOXES SIZED PER ANSI/TIA-569 AT 100-FT INTERVALS IN STRAIGHT CONDUIT RUNS, OR CONDUIT CONTAINING BENDS TOTALING MORE THAN 180 DEGREES.
- PROVIDE CONDUITS AND SLEEVES AS REQUIRED FOR ROUTING AND INSTALLATION OF HORIZONTAL AND BACKBONE CABLING. PROVIDE FIRE-STOP MATERIALS TO SEAL IN AND AROUND CONDUIT PER CODE. REFER TO ARCHITECTURAL DRAWINGS FOR PARTITION TYPES AND WALL HEIGHTS.
- OUTLET LOCATIONS ARE APPROXIMATE. DETERMINE EXACT LOCATIONS IN FIELD; DOCUMENT VARIANCES ON AS-BUILT DRAWINGS.
- CONTRACTOR SHALL BE RESPONSIBLE FOR RELOCATING FURNITURE, INCLUDING TRANSPORTATION, FOR ALL WORK TO DESIRED VA STORAGE LOCATION. COORDINATE WITH VA AS REQUIRED.
- ALL DATA CABLING SHALL BE SEGREGATED FROM OTHER SPECIAL SYSTEMS INCLUDING, BUT NOT LIMITED TO, SECURITY, FIRE ALARM, AND NURSE CALL SYSTEMS. WHEN ROUTED THROUGH CONDUIT, DATA CABLING SHALL HAVE ITS OWN RACEWAY. WHEN DATA CABLING IS ROUTED THROUGH A COMMON SPECIAL SYSTEMS CABLE TRAY, CABLING SHALL BE BUNDLED WITH LIKE SYSTEMS; ADDITIONALLY, CABLE TRAYS SHALL BE PROVIDED WITH TRAY DIVIDERS AS REQUIRED TO SEGREGATE SYSTEMS FROM ONE ANOTHER.
- FIBER-OPTIC CABLING ROUTES AND ASSOCIATED RACEWAYS/ CABLE TRAY ARE DIAGRAMMATICAL. COORDINATE EXACT ROUTING WITH EXISTING CONDITIONS, ARCHITECTURAL FEATURES, MECHANICAL DUCTWORK, PIPING, EQUIPMENT, AND ANY OTHER OBSTRUCTIONS PRIOR TO INSTALLATION.

KEY NOTES

- PROVIDE TELECOMMUNICATIONS OUTLET WITH PORT QUANTITY SHOWN TO REPLACE EXISTING TELECOMMUNICATIONS OUTLET; EXISTING OUTLET CONDUIT SHALL REMAIN AND BE UTILIZED TO FEED NEW CABLING; REFERENCE SHEET DETAIL '1' ON SHEET ET503 AND THE GENERAL NOTES ON THIS SHEET FOR ADDITIONAL INFORMATION. COORDINATE WITH VA FOR EXACT OUTLET PLACEMENT.
- ALL EXISTING WIRELESS ACCESS POINTS (WAP) SHALL BE RE-FED WITH CAT 6A CABLING. CONTRACTOR SHALL FIELD VERIFY QUANTITY AND LOCATIONS OF WAPS.
- FIBER-OPTIC CABLE VERTICAL ROUTING; COORDINATE EXACT LOCATIONS PRIOR TO INSTALLATION. UTILIZE RIGID CONDUIT SLEEVES WITH FIRE PROOFING AND ALL REQUIRED APPURTENANCES AS REQUIRED. REFERENCE DETAIL 2 ON SHEET ET503 FOR ADDITIONAL INFORMATION.
- FIBER-OPTIC CABLE HORIZONTAL ROUTING SHALL BE CONCEALED ABOVE DROP CEILING WHEREVER POSSIBLE. UTILIZE CABLE TRAY AS APPLICABLE. PROVIDE CONDUIT SLEEVES WITH FIREPROOFING AS REQUIRED WHERE WALL PENETRATIONS ARE REQUIRED. REFERENCE DETAIL 2 ON SHEET ET503 FOR ADDITIONAL INFORMATION.
- CONTRACTOR SHALL ASSUME AT LEAST 10 LINEAR-FEET OF EXISTING CABLE TRAY WILL BE REQUIRED TO BE MODIFIED/REPLACED AT EACH TR.
- UTILIZE EXISTING PACS SECURITY HEAD END LOCATION FOR NEW OR RELOCATED PACS SECURITY TR EQUIPMENT. UPGRADE OR MODIFY EXISTING HEAD END LOCATION AS REQUIRED TO PROVIDE A COMPLETE AND FULLY FUNCTIONAL TR PACS SECURITY SYSTEM. PROVIDE EQUIPMENT, RACEWAYS, AND CABLING AS REQUIRED. COORDINATE WITH VA PRIOR TO CONSTRUCTION. CONTRACTOR SHALL VERIFY EXACT HEAD END LOCATION AS REQUIRED.

KEY PLAN



AREA A



ALL BACKBONE CABLING ROUTES ARE DIAGRAMMATICAL;
CONTRACTOR SHALL ENSURE A-SIDE AND B-SIDE ROUTING IS
AS DIVERSE AS PRACTICAL. REFERENCE COMMUNICATIONS
DRAWINGS FOR ALL REQUIRED FIBER-OPTIC CABLING.

1 BLDG 55 - FLOOR 1 - AREA A - TELECOMMUNICATIONS PLAN
1" = 10'-0"



Revisions:	Date:

CONSULTANT

ARCHITECT/ENGINEER OF RECORD
A/E: SPEES DESIGN BUILD 625 1ST AVE, STE 301 SEATTLE, WA 98104 (206) 590-2118 RAY SPEES

STAMP

Office of Construction and Facilities Management
U.S. Department of Veterans Affairs

Drawing Title
BLDG 55 - FLOOR 1 - AREA A - TELECOMMUNICATIONS PLAN
Approved:

Phase
CONSTRUCTION DOCUMENTS
FULLY SPRINKLERED

Project Title
EHRM INFRASTRUCTURE UPGRADES
Location
ST. LOUIS VA MEDICAL CENTER - JEFFERSON BARRACKS, MO
Issue Date
03/31/2022
Checked
LRL/WM
Drawn
JGE/JBB

Project Number
657-21-701JB
Building Number
55
Drawing Number
55ET101a
347 OF 435

A

B

C

D

E

F

A

B

C

D

E

F

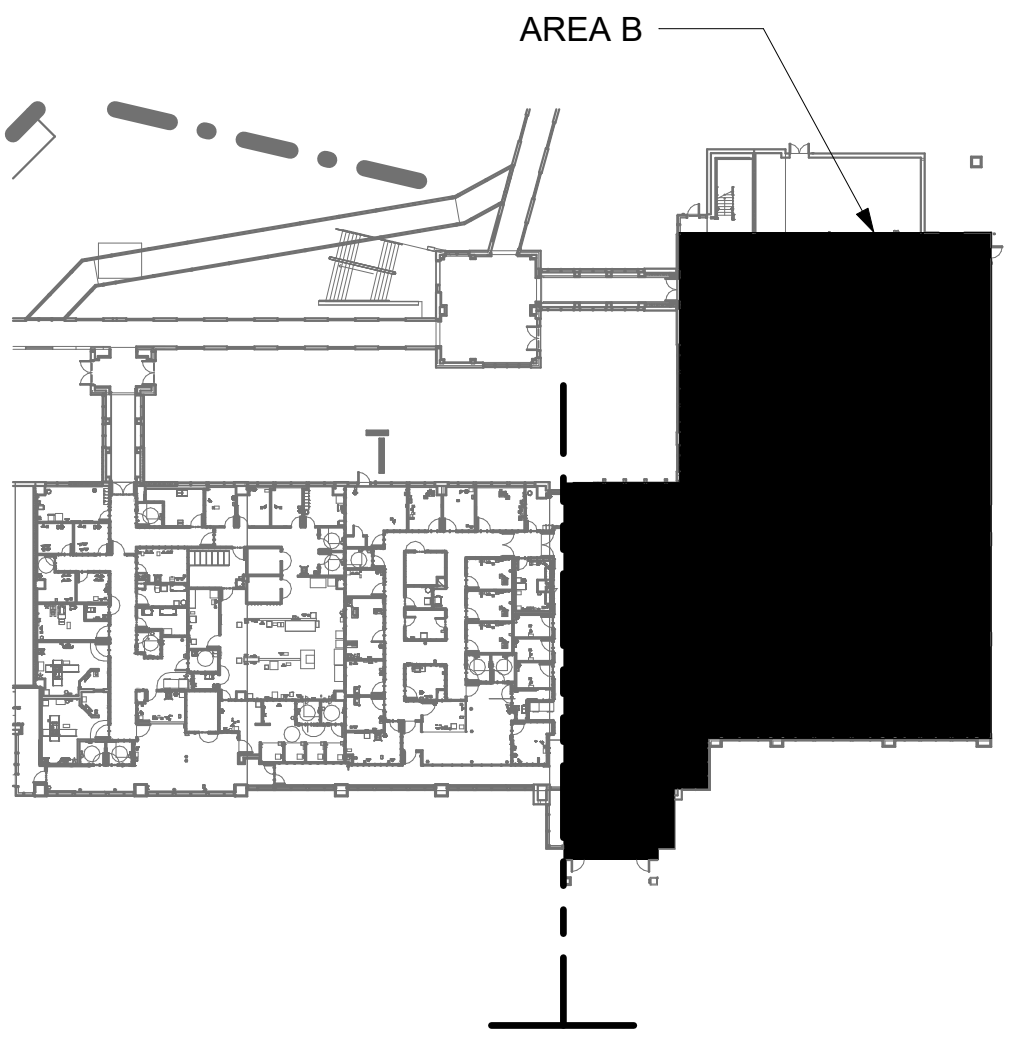
GENERAL NOTES

- ALL EXISTING EQUIPMENT MAY NOT BE SHOWN FOR CLARITY. CONTRACTOR SHALL FIELD VERIFY ALL POWER AND SIGNAL DEVICES AND ASSOCIATED CIRCUITRY AS REQUIRED. ALL RACEWAYS AND CONDUCTORS ASSOCIATED WITH EQUIPMENT TO BE DEMOLISHED SHALL BE DEMOLISHED BACK TO THEIR SOURCE, UNLESS OTHERWISE NOTED.
- PROTECT ALL EXISTING WORK FROM DAMAGE DURING CONSTRUCTION. ANY DAMAGED MATERIALS, SYSTEMS, COMPONENTS, FINISHES BE LIKE, SHALL BE REPAIRED OR REPLACED AT THE EXPENSE OF THE CONTRACTOR TO THE ACCEPTANCE OF THE OWNER.
- SEAL ALL INTERIOR WALL AND CEILING PENETRATIONS TO MATCH EXISTING FIRE RATING OR NEW FIRE RATING, IF REQUIRED. COORDINATE WITH ARCHITECTURAL DRAWINGS AS REQUIRED.
- ALL TELECOMMUNICATIONS CABLE CATEGORY 6 AND BELOW SHALL BE UPGRADED WITH CAT6A PORTS AND CABLE QUANTITIES INDICATED, UNLESS NOTED OTHERWISE.
- TELECOMMUNICATIONS CABLES SHALL BE ROUTED IN EXISTING PATHWAY VACATED BY EXISTING CABLE AS CONDUIT FILL ALLOWS. PROVIDE RACEWAYS TO EXTEND TO ASSOCIATED TR AS REQUIRED.
- A TELECOMMUNICATIONS OUTLET UPGRADE SHALL INCLUDE, BUT IS NOT LIMITED TO REMOVING AND DISPOSING EXISTING DEVICES AND CABLES; PROVIDING ALL LABOR, MATERIALS, TOOLS, TEST INSTRUMENTS, AND CONSUMABLES REQUIRED FOR THE INSTALLATION, TERMINATION, TESTING, LABELING, AND CERTIFICATION OF A FULLY FUNCTIONAL CATEGORY 6A OUTLET WITH THE PORT QUANTITY INDICATED.
- CONTRACTOR SHALL PROVIDE, INSTALL, AND TERMINATE HORIZONTAL CAT 6A CABLE FROM EACH WAO (WORK AREA OUTLET) TO ITS RESPECTIVE TR.
- PROVIDE PULL BOXES SIZED PER ANSI/TIA-569 AT 100-FT INTERVALS IN STRAIGHT CONDUIT RUNS, OR CONDUIT CONTAINING BENDS TOTALING MORE THAN 180 DEGREES.
- PROVIDE CONDUITS AND SLEEVES AS REQUIRED FOR ROUTING AND INSTALLATION OF HORIZONTAL AND BACKBONE CABLEING. PROVIDE FIRE-STOP MATERIALS TO SEAL IN AND AROUND CONDUIT PER CODE. REFER TO ARCHITECTURAL DRAWINGS FOR PARTITION TYPES AND WALL HEIGHTS.
- OUTLET LOCATIONS ARE APPROXIMATE. DETERMINE EXACT LOCATIONS IN FIELD; DOCUMENT VARIANCES ON AS-BUILT DRAWINGS.
- CONTRACTOR SHALL BE RESPONSIBLE FOR RELOCATING FURNITURE, INCLUDING TRANSPORTATION, FOR ALL WORK TO DESIRED VA STORAGE LOCATION. COORDINATE WITH VA AS REQUIRED.
- ALL DATA CABLEING SHALL BE SEGREGATED FROM OTHER SPECIAL SYSTEMS INCLUDING, BUT NOT LIMITED TO, SECURITY, FIRE ALARM, AND NURSE CALL SYSTEMS. WHEN ROUTED THROUGH CONDUIT, DATA CABLEING SHALL HAVE ITS OWN RACEWAY. WHEN DATA CABLEING IS ROUTED THROUGH A COMMON SPECIAL SYSTEMS CABLE TRAY, CABLEING SHALL BE BUNDLED WITH LIKE SYSTEMS; ADDITIONALLY, CABLE TRAYS SHALL BE PROVIDED WITH TRAY DIVIDERS AS REQUIRED TO SEGREGATE SYSTEMS FROM ONE ANOTHER.
- FIBER-OPTIC CABLEING ROUTES AND ASSOCIATED RACEWAYS/ CABLE TRAY ARE DIAGRAMMATICAL. COORDINATE EXACT ROUTING WITH EXISTING CONDITIONS, ARCHITECTURAL FEATURES, MECHANICAL DUCTWORK, PIPING, EQUIPMENT, AND ANY OTHER OBSTRUCTIONS PRIOR TO INSTALLATION.

KEY NOTES

- PROVIDE TELECOMMUNICATIONS OUTLET WITH PORT QUANTITY SHOWN TO REPLACE EXISTING TELECOMMUNICATIONS OUTLET; EXISTING OUTLET CONDUIT SHALL REMAIN AND BE UTILIZED TO FEED NEW CABLEING; REFERENCE SHEET DETAIL '1' ON SHEET ET503 AND THE GENERAL NOTES ON THIS SHEET FOR ADDITIONAL INFORMATION. COORDINATE WITH VA FOR EXACT OUTLET PLACEMENT.
- ALL EXISTING WIRELESS ACCESS POINTS (WAP) SHALL BE RE-FED WITH CAT 6A CABLEING. CONTRACTOR SHALL FIELD VERIFY QUANTITY AND LOCATIONS OF WAPS.
- FIBER-OPTIC CABLE VERTICAL ROUTING; COORDINATE EXACT LOCATIONS PRIOR TO INSTALLATION. UTILIZE RIGID CONDUIT SLEEVES WITH FIREPROOFING AND ALL REQUIRED APPURTENANCES AS REQUIRED. REFERENCE DETAIL 2 ON SHEET ET503 FOR ADDITIONAL INFORMATION.
- FIBER-OPTIC CABLE HORIZONTAL ROUTING SHALL BE CONCEALED ABOVE DROP CEILING WHEREVER POSSIBLE. UTILIZE CABLE TRAY AS APPLICABLE. PROVIDE CONDUIT SLEEVES WITH FIREPROOFING AS REQUIRED WHERE WALL PENETRATIONS ARE REQUIRED. REFERENCE DETAIL 2 ON SHEET ET503 FOR ADDITIONAL INFORMATION.
- CONTRACTOR SHALL ASSUME AT LEAST 10 LINEAR-FEET OF EXISTING CABLE TRAY WILL BE REQUIRED TO BE MODIFIED/REPLACED AT EACH TR.
- UTILIZE EXISTING PACS SECURITY HEAD END LOCATION FOR NEW OR RELOCATED PACS SECURITY TR EQUIPMENT. UPGRADE OR MODIFY EXISTING HEAD END LOCATION AS REQUIRED TO PROVIDE A COMPLETE AND FULLY FUNCTIONAL TR PACS SECURITY SYSTEM. PROVIDE EQUIPMENT, RACEWAYS, AND CABLEING AS REQUIRED. COORDINATE WITH VA PRIOR TO CONSTRUCTION. CONTRACTOR SHALL VERIFY EXACT HEAD END LOCATION AS REQUIRED.

KEY PLAN



AREA OF WORK

ALL BACKBONE CABLEING ROUTES ARE DIAGRAMMATICAL; CONTRACTOR SHALL ENSURE A-SIDE AND B-SIDE ROUTING IS AS DIVERSE AS PRACTICAL. REFERENCE COMMUNICATIONS DRAWINGS FOR ALL REQUIRED FIBER-OPTIC CABLEING.

1 BLDG 55 - FLOOR 1 - AREA B - TELECOMMUNICATIONS PLAN
1" = 10'-0"



Revisions:	Date:

CONSULTANT

ARCHITECT/ENGINEER OF RECORD
A/E: SPEES DESIGN BUILD 625 1ST AVE, STE 301 SEATTLE, WA 98104 (206) 590-2118 RAY SPEES

STAMP

Office of Construction and Facilities Management
VA U.S. Department of Veterans Affairs

Drawing Title
BLDG 55 - FLOOR 1 - AREA B - TELECOMMUNICATIONS PLAN
Approved:

Phase
CONSTRUCTION DOCUMENTS
FULLY SPRINKLERED

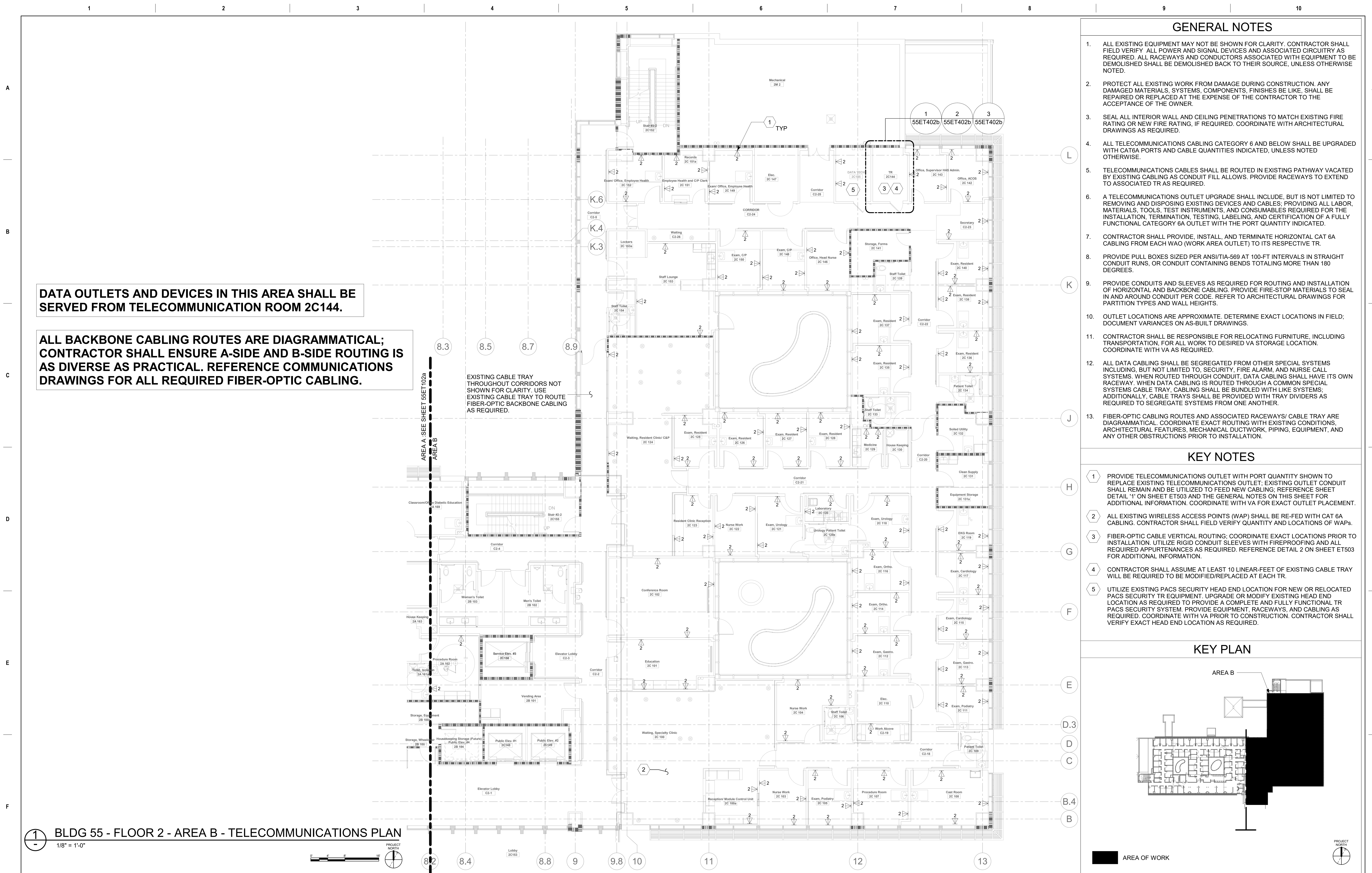
Project Title
EHRM INFRASTRUCTURE UPGRADES
Location
ST. LOUIS VA MEDICAL CENTER - JEFFERSON BARRACKS, MO
Issue Date
03/31/2022
Checked
LRL/WM
Drawn
JGE/JBB
Project Number
657-21-701JB
Building Number
55
Drawing Number
55ET101b
348 OF 435

- 1 PROVIDE TELECOMMUNICATIONS OUTLET WITH PORT QUANTITY SHOWN TO REPLACE EXISTING TELECOMMUNICATIONS OUTLET. EXISTING OUTLET CONDUIT SHALL REMAIN AND BE UTILIZED TO RE-FEED NEW CABLING; REFERENCE SHEET DETAIL "1" ON SHEET ET503 AND THE GENERAL NOTES ON THIS SHEET FOR ADDITIONAL INFORMATION. COORDINATE WITH VA FOR EXACT OUTLET PLACEMENT.
- 2 ALL EXISTING WIRELESS ACCESS POINTS (WAP) SHALL BE RE-FED WITH CAT 6A CABLING. CONTRACTOR SHALL FIELD VERIFY QUANTITY AND LOCATIONS OF WAPS.
- 3 FIBER-OPTIC CABLE VERTICAL ROUTING; COORDINATE EXACT LOCATIONS PRIOR TO INSTALLATION. UTILIZE RIGID CONDUIT SLEEVES WITH FIRE PROOFING AND ALL REQUIRED APPURTENANCES AS REQUIRED. REFERENCE DETAIL 2 ON SHEET ET503 FOR ADDITIONAL INFORMATION.
- 4 CONTRACTOR SHALL ASSUME AT LEAST 10 LINEAR-FEET OF EXISTING CABLE TRAY WILL BE REQUIRED TO BE MODIFIED/REPLACED AT EACH TR.
- 5 UTILIZE EXISTING PACS SECURITY HEAD END LOCATION FOR NEW OR RELOCATED PACS SECURITY TR EQUIPMENT; UPGRADE OR MODIFY EXISTING HEAD END LOCATION AS REQUIRED TO PROVIDE A COMPLETE AND FULLY FUNCTIONAL TR PACS SECURITY SYSTEM. PROVIDE EQUIPMENT, RACEWAYS, AND CABLING AS REQUIRED. COORDINATE WITH VA PRIOR TO CONSTRUCTION. CONTRACTOR SHALL VERIFY EXACT HEAD END LOCATION AS REQUIRED.

Architectural floor plan of the 1st floor of the University of Michigan Museum of Natural History. The plan shows a large central hall (Area A) and various rooms, including a large auditorium (Room 100) and a large lecture hall (Room 200).

**ALL BACKBONE CABLING ROUTES ARE DIAGRAMMATICAL;
CONTRACTOR SHALL ENSURE A-SIDE AND B-SIDE ROUTING IS AS
DIVERSE AS PRACTICAL. REFERENCE COMMUNICATIONS DRAWINGS
FOR ALL REQUIRED FIBER-OPTIC CABLING.**

[illegible]

[illegible]