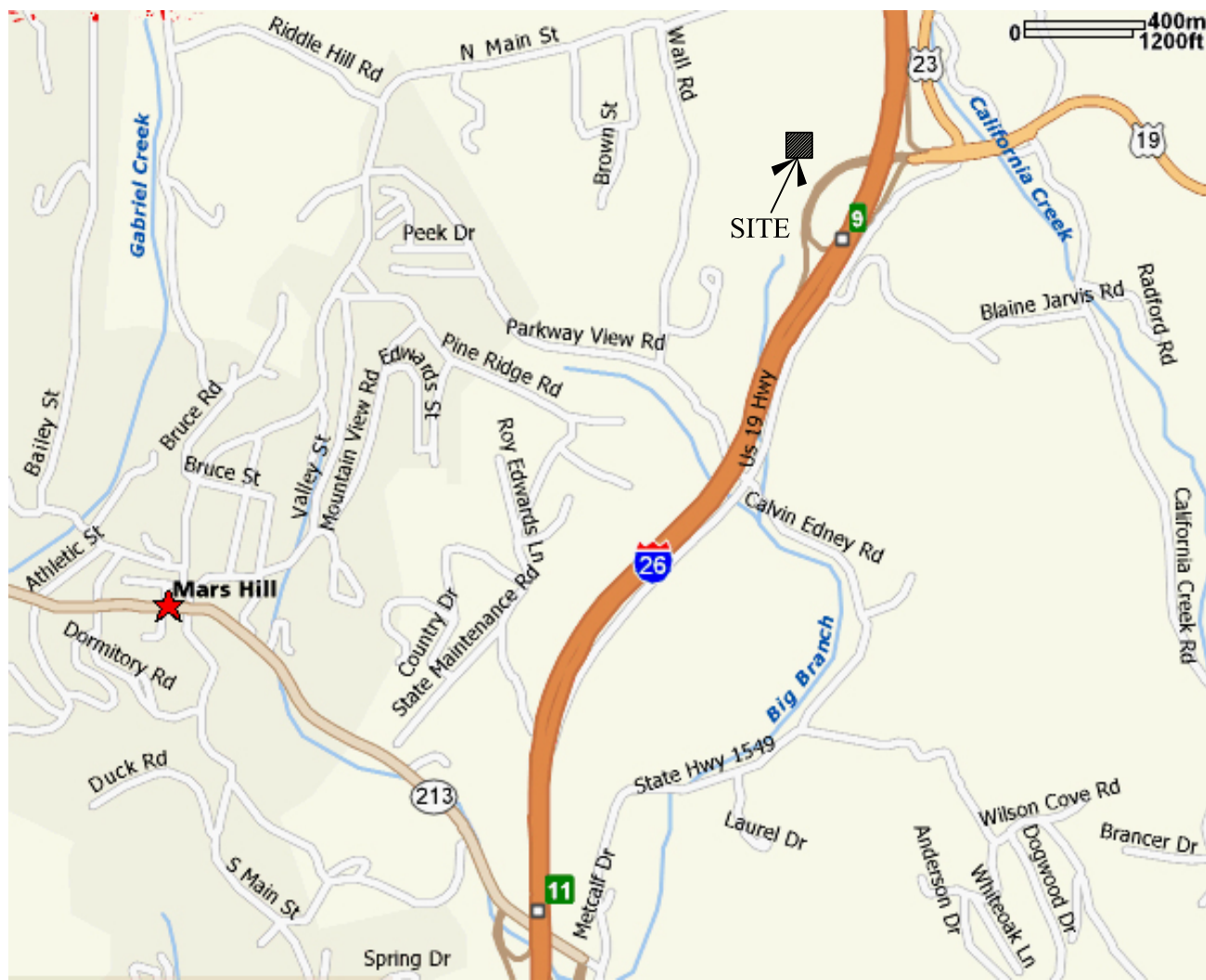


PROJECT INFORMATION

CONSTRUCTION:	TYPE V - UNPROTECTED, UNSPRINKLERED
OCCUPANCY:	GROUP B
SQUARE FOOTAGE (CONDITIONED AREA)	7,370 S.F.

LOCATION MAP



CODES

- BUILDING CODE: 2003 INTERNATIONAL BUILDING CODE
- LIFE SAFETY CODE: 2009 NATIONAL FIRE PROTECTION ASSOCIATION 101
- FIRE CODE: 2000 INTERNATIONAL FIRE PREVENTION CODE
- MECHANICAL CODE: 2003 INTERNATIONAL MECHANICAL CODE
- PLUMBING CODE: 2003 INTERNATIONAL PLUMBING CODE
- ELECTRICAL CODE: 2008 NATIONAL ELECTRICAL CODE
- ENERGY CODE: 2003 ENERGY CONSERVATION CODE
- ACCESSIBILITY CODE: ADA / ARCHITECTURAL BARRIERS ACT ACCESSIBILITY GUIDELINES
- NORTH CAROLINA WIND CODE: APPLICABLE PROVISIONS OF THE NORTH CAROLINA BUILDING CODE
- FOREST SERVICE: FOREST SERVICE BUILT ENVIRONMENT IMAGE GUIDE

INDEX OF DRAWINGS

- COVER SHEET

CIVIL

- C1.1 STAKING PLAN
- C1.1 CIVIL SITE PLAN
- C1.2 CIVIL GRADING, DRAINAGE, SEDIMENT, AND EROSION CONTROL PLAN
- C1.3 CIVIL UTILITY PLAN
- C1.4 CIVIL LANDSCAPE PLAN
- C1.5 PAVEMENT PLAN
- C2.1 SANITARY SEWER PROFILE
- C2.2 CIVIL ACCESS ROAD AND STORM SEWER PROFILE
- C3.1 CIVIL CONSTRUCTION DETAILS
- C3.2 FIRE HYDRANT & WATER METER VAULT
- C3.3 CIVIL CONSTRUCTION DETAILS
- C3.4 CONSTRUCTION DETAILS
- C3.5 UTILITY TRENCH TYPICALS

ARCHITECTURAL

- A0.1 ARCHITECTURAL SITE PLAN
- A1.0 FLOOR PLAN, FINISH SELECTIONS
- A1.1 DIMENSIONED FLOOR PLAN
- A1.2 REFLECTED CEILING PLAN
- A1.3 ROOF PLAN AND DETAILS
- A2.0 EXTERIOR ELEVATION SHEET 1.
- A2.1 EXTERIOR ELEVATION SHEET 2.
- A2.2 INTERIOR ELEVATIONS AND ENLARGED PLANS
- A2.3 INTERIOR DETAILS
- A3.0 BUILDING SECTIONS
- A3.1 SECTIONS AND DETAILS
- A3.2 WALL TYPES
- A4.0 DOOR & FINISH SCHEDULES
- A5.0 WINDOW INSTALLATION DETAILS

STRUCTURAL

- S-0 GENERAL NOTES
- S-1.1 FOUNDATION PLAN
- S-1.2 ROOF FRAMING PLAN
- S-2.1 STRUCTURAL DETAILS & SECTIONS
- S-2.2 STRUCTURAL DETAILS & SECTIONS
- S-2.3 STRUCTURAL DETAILS & SECTIONS

MECHANICAL

- M0.1 MECHANICAL LEGENDS AND ABBREVIATIONS
- M1.1 MECHANICAL PLAN
- M1.2 MECHANICAL PIPING PLAN
- M1.3 MECHANICAL SITE PLAN
- M3.1 MECHANICAL DETAILS AND SCHEDULES

PLUMBING

- P0.1 PLUMBING SCHEDULE AND DETAILS
- P1.1 PLUMBING SUPPLY PLAN
- P1.2 PLUMBING WASTE PLAN

ELECTRICAL

- E1.1 ELECTRICAL GENERAL
- E1.2 ELECTRICAL SITE PLAN
- E2.1 FLOOR PLAN - LIGHTING
- E3.1 FLOOR PLAN - ELECTRICAL
- E3.2 FLOOR PLAN - TELECOM
- E3.3 TELECOM TEL/DATA & RADIO RACK DETAILS
- E3.4 TELECOM TEL/DATA & RADIO BACKBOARD DETAILS
- E4.1 ELECTRICAL SCHEDULES

U.S. FOREST SERVICE



SOUTHERN REGION

1720 PEACHTREE RD. N.W.,  
SUITE 716  
ATLANTA, GEORGIA 30309

Appalachian Ranger District  
Administrative Office  
National Forests in North Carolina

MOMA PROJECT NO. 0204.16

CIVIL

ENGINEERING MANAGEMENT INCORPORATED  
303 SWANSON DRIVE  
LAWRENCEVILLE, GEORGIA 30043  
770.962.1387 fax 770.962.8010

ARCHITECT

MOMA ARCHITECTURE, INC.  
THE DENMEAD BUILDING AT MARIETTA STATION  
123 CHURCH STREET  
SUITE 350  
MARIETTA, GEORGIA 30060  
770.422.9040 fax 770.422.9050

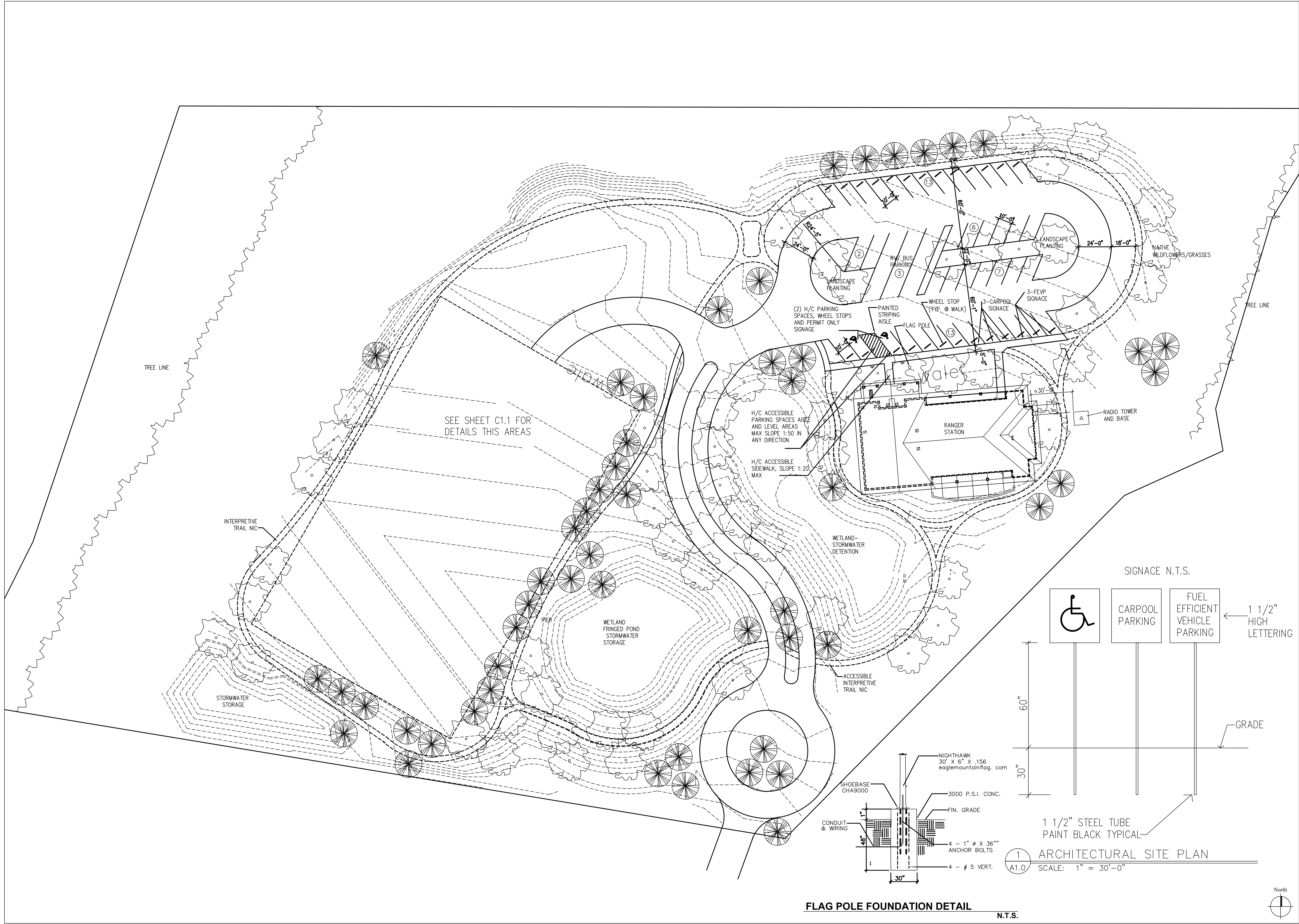
M. E. P.

HESM&A  
1255 COLLIER ROAD  
ATLANTA, GEORGIA 30318-2308  
404.881.5300 fax 404.881.0909

STRUCTURAL

STABILITY ENGINEERING  
431 WEST PONCE DE LEON AVE.  
SUITE 4  
DECATUR, GEORGIA 30030  
404.377.9316 fax 404.377.9317





M O M A  
ARCHITECTURE

123 CHURCH STREET, SUITE 350  
MARIETTA, GEORGIA 30060-1948  
770.422.9040 FAX. 422.9050

U.S. FOREST SERVICE  
SOUTHERN REGION

REGIONAL ENGINEER

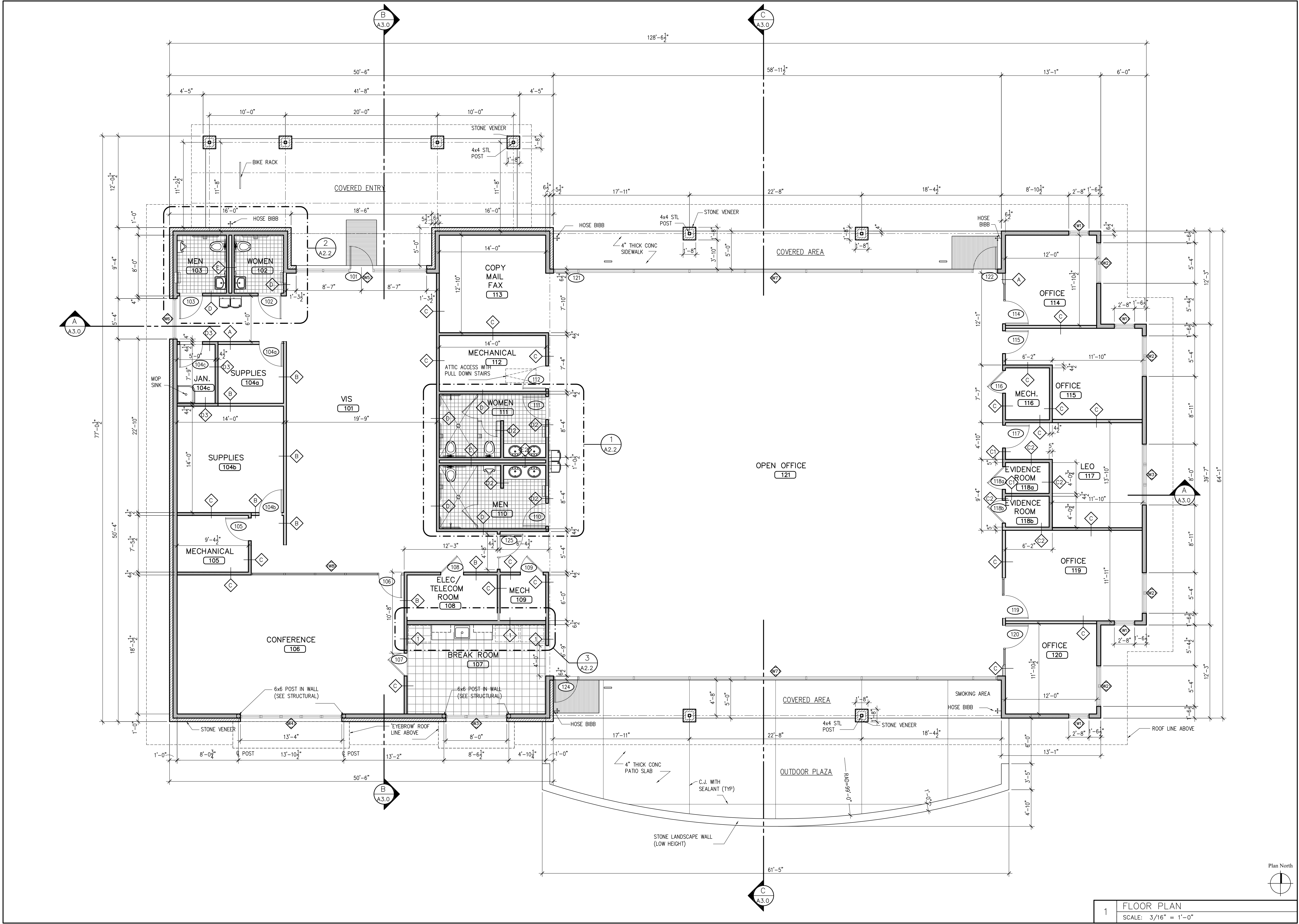
Appalachian Ranger District  
Administrative Office  
National Forests in North Carolina

Document Issue Record

No.	Date	Description
03.15.07		50% COMPLETION
04.17.07		90% COMPLETION
05.18.07		100% COMPLETION
09.14.07		100% RE-SUBMITTAL

USFS Proj. No.  
MOMA Proj. No. 0204.16  
date: 10/24/07  
Sheet Information:  
ARCHITECTURAL SITE PLAN  
Sheet Number: A0.1





M O M A  
ARCHITECTURE

123 CHURCH STREET, SUITE 350  
MARIETTA, GEORGIA 30060-1948  
770.422.9040 FAX. 422.9050

U.S. FOREST SERVICE  
SOUTHERN REGION

REGIONAL ENGINEER

Appalachian Ranger District  
Administrative Office  
National Forests in North Carolina

Document Issue Record

No.	Date	Description
A	03.15.07	50% COMPLETION
B	04.17.07	90% COMPLETION
C	05.18.07	100% COMPLETION
D	09.14.07	100% RE-SUBMITTAL

USFS Proj. No. B-...  
MOMA Proj. No. 0204.16  
date: 12/08/06  
Sheet Information:  
FLOOR PLAN  
Sheet Number:

1 FLOOR PLAN  
SCALE: 3/16" = 1'-0"

A1.1





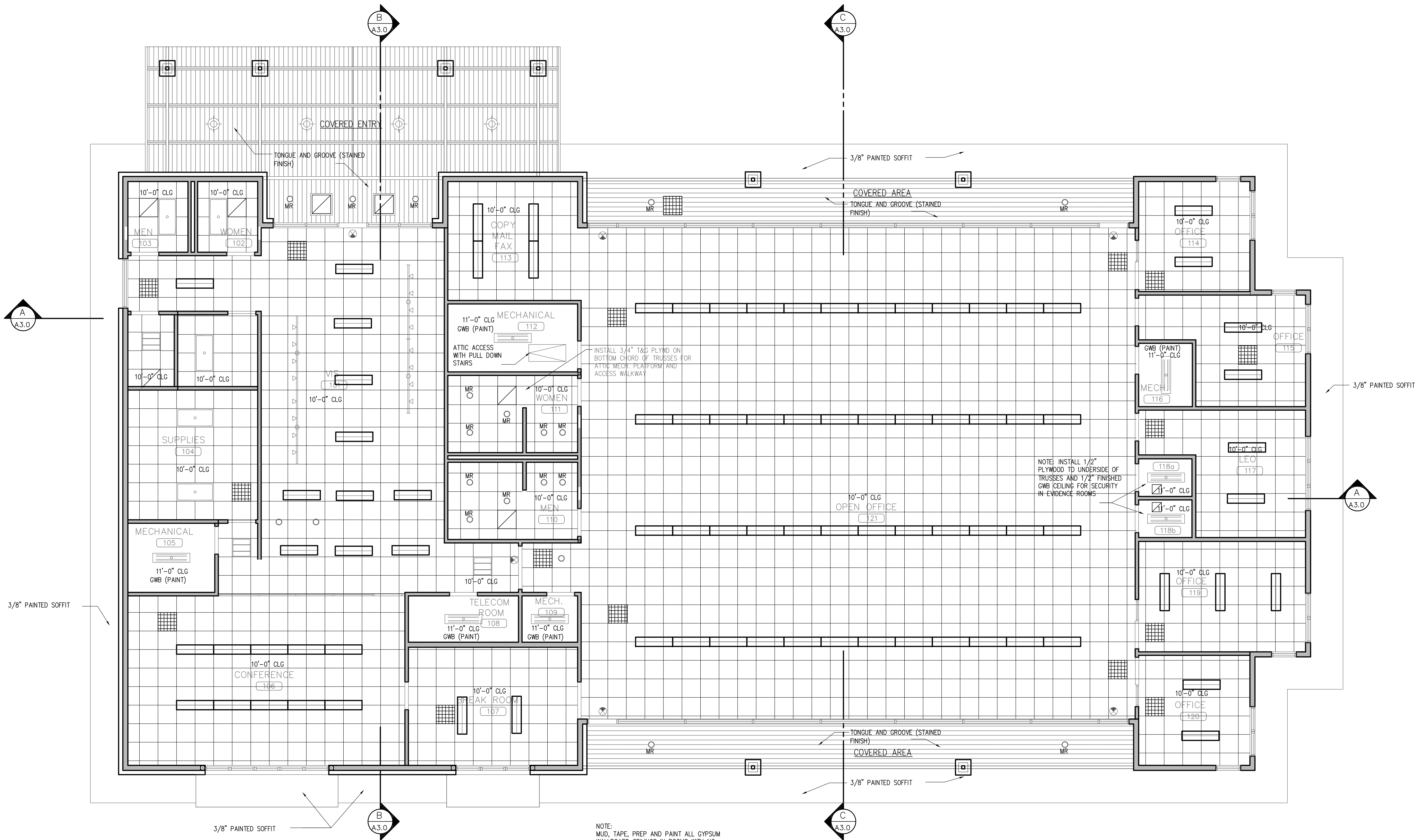
Document Issue Record		
No.	Date	Description
A	03.15.07	50% COMPLETION
B	04.17.07	90% COMPLETION
A	05.18.07	100% COMPLETION
A	09.14.07	100% RE-SUBMITTAL

USFS Proj. No.  
MOMA Proj. No. 0204.16  
date: 10/24/07

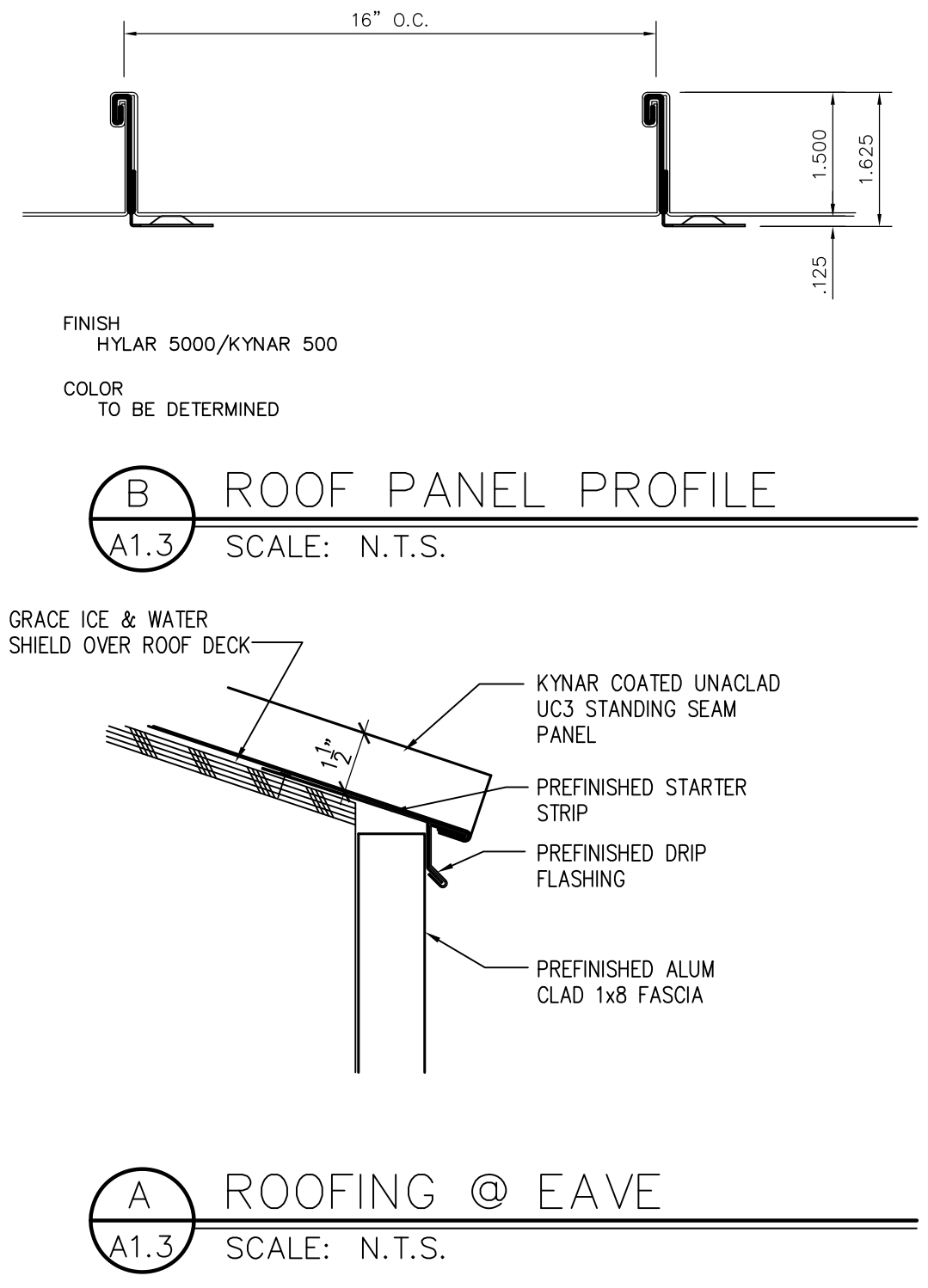
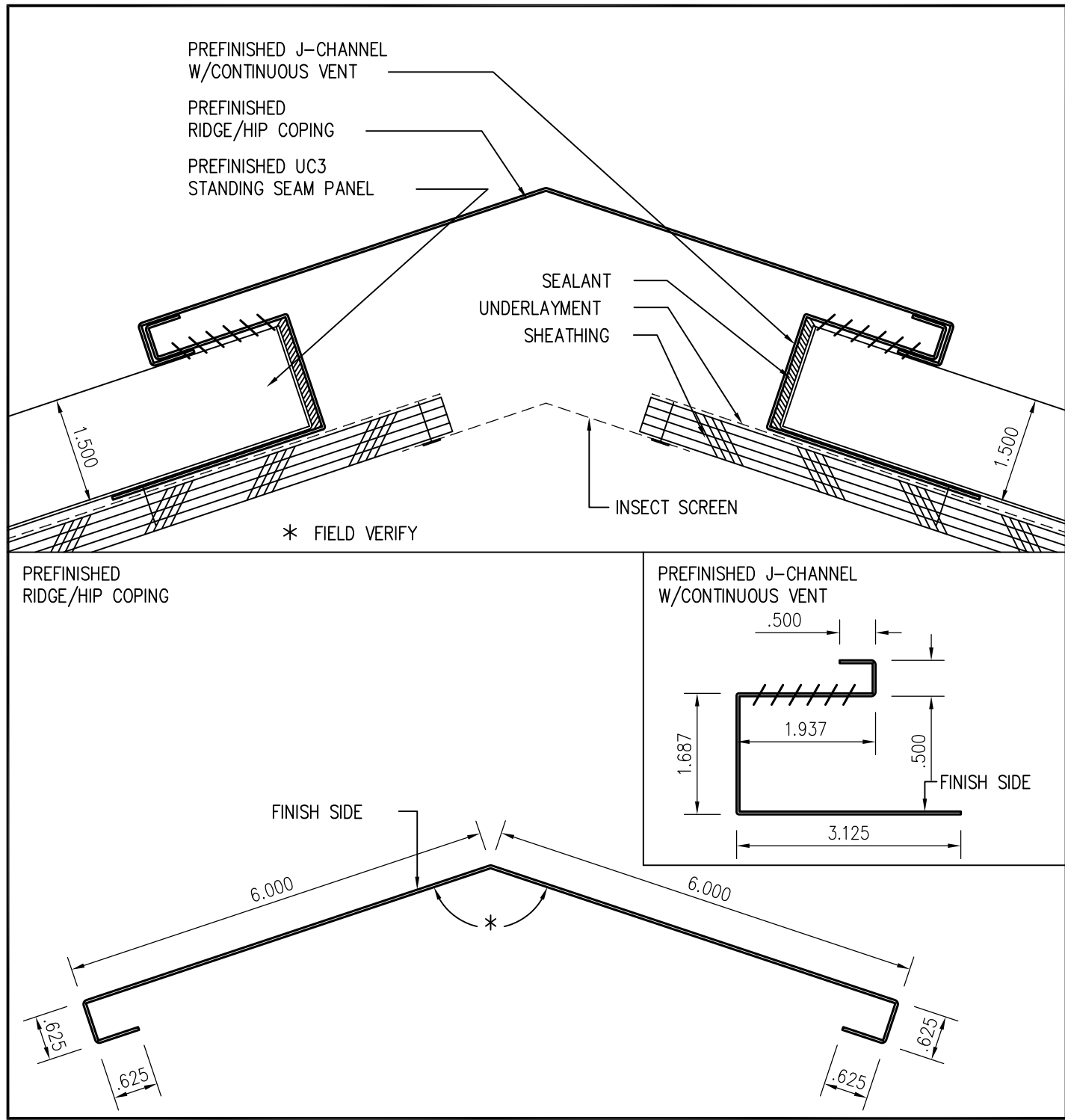
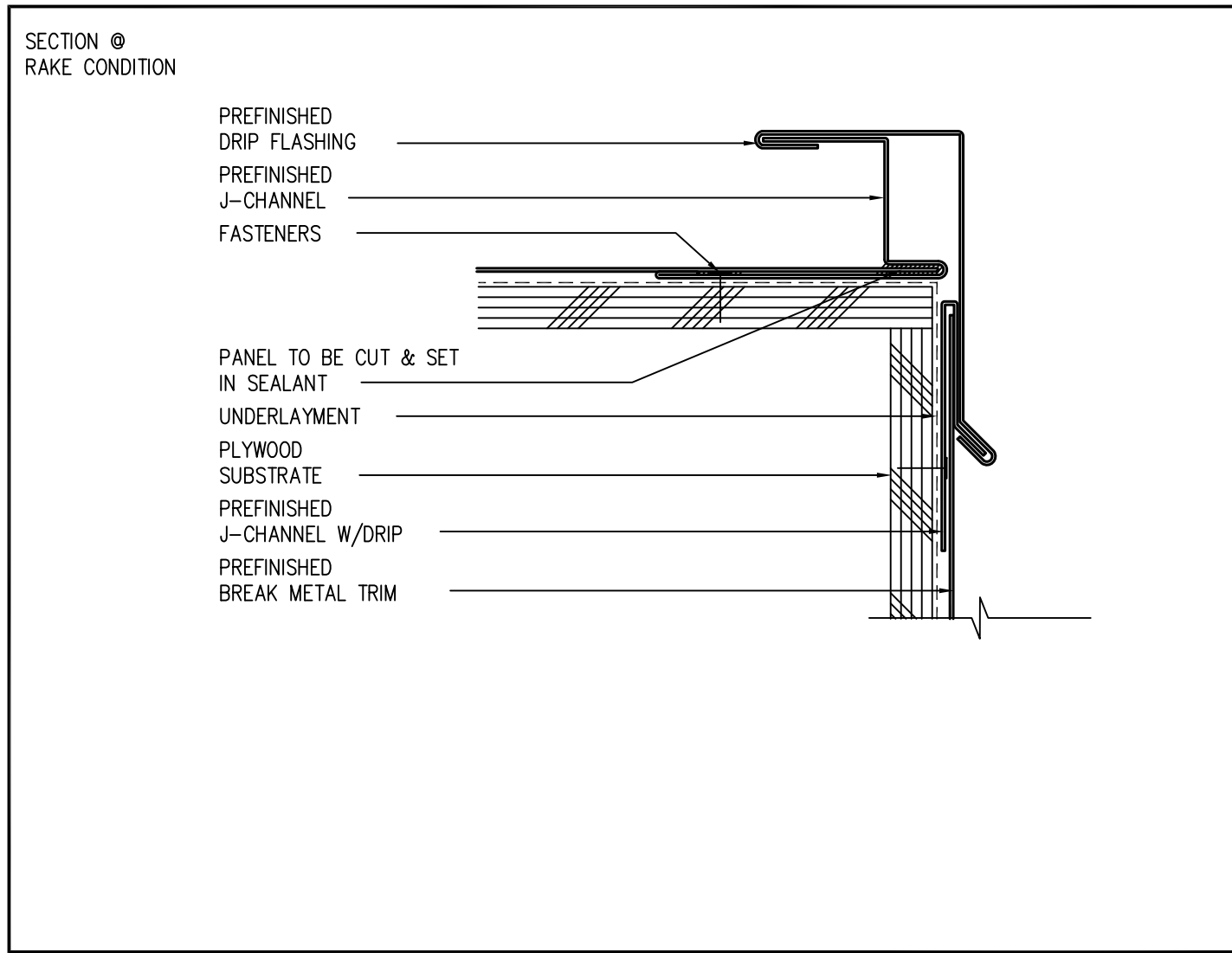
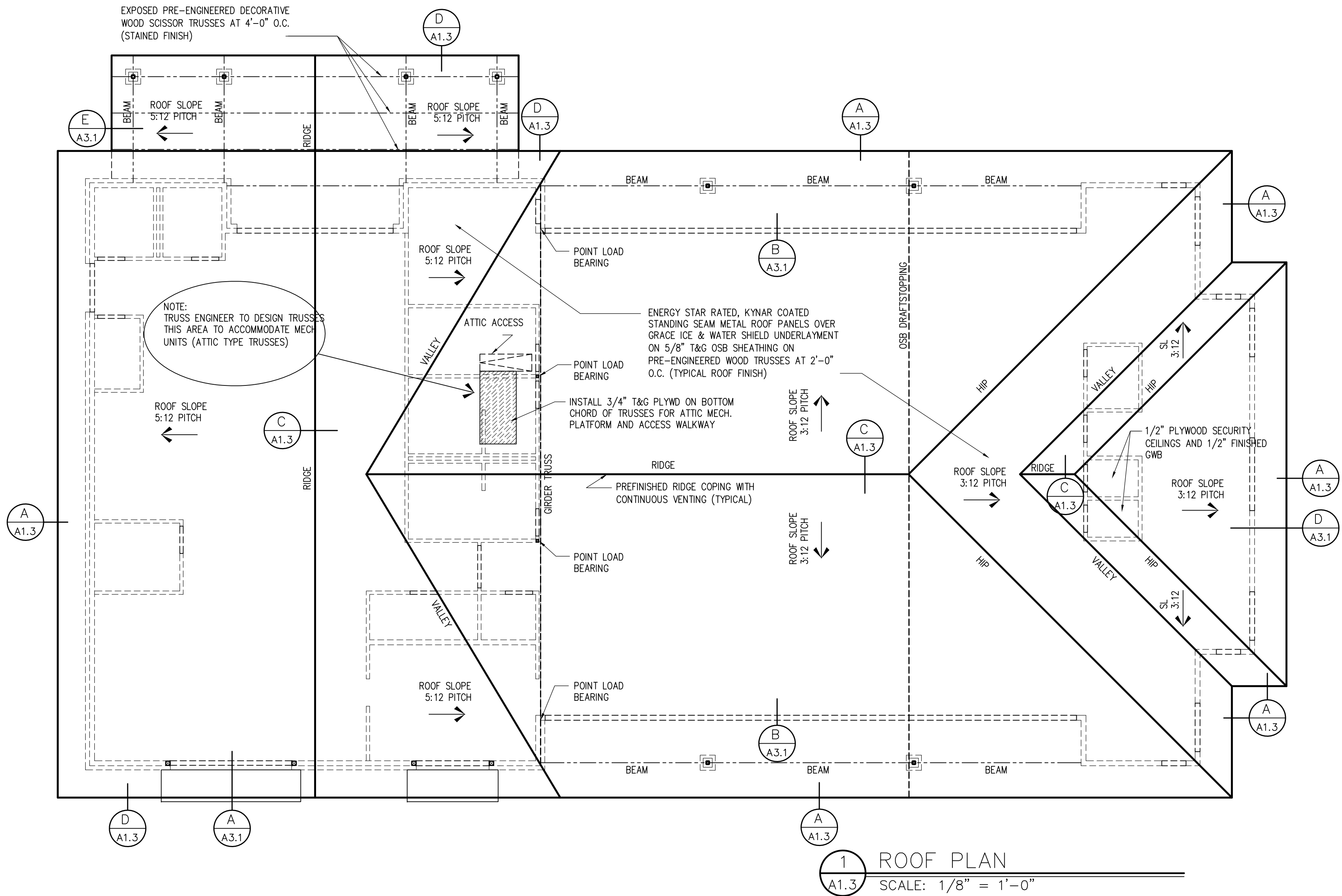
Sheet Information:  
REFLECTED  
CEILING PLAN

Sheet Number:

A1.2



LEGEND

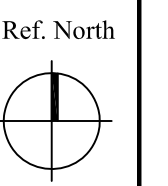
Document Issue Record		
No.	Date	Description
03.15.07		50% COMPLETION
04.17.07		90% COMPLETION
05.18.07		100% COMPLETION
09.14.07		100% RE-SUBMITTAL

USFS Proj. No.  
MOMA Proj. No. 0204.16  
date: 10/24/07

Sheet Information:  
ROOF PLAN AND DETAILS

Sheet Number:

A1.3





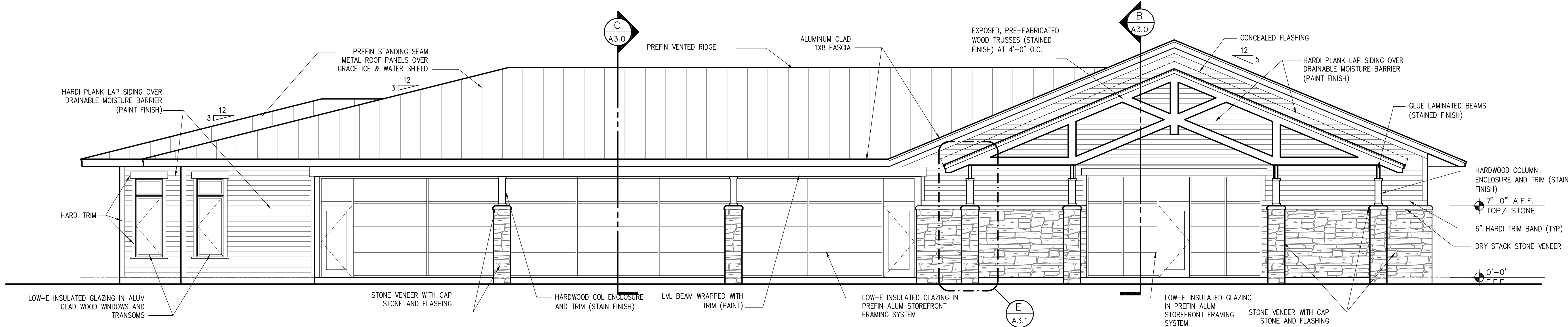
Document Issue Record		
No.	Date	Description
03.15.07		50% COMPLETION
04.17.07		90% COMPLETION
05.18.07		100% COMPLETION
09.14.07		100% RE-SUBMITTAL

USFS Proj. No.  
MOMA Proj. No. 0204.16  
date: 10/24/07

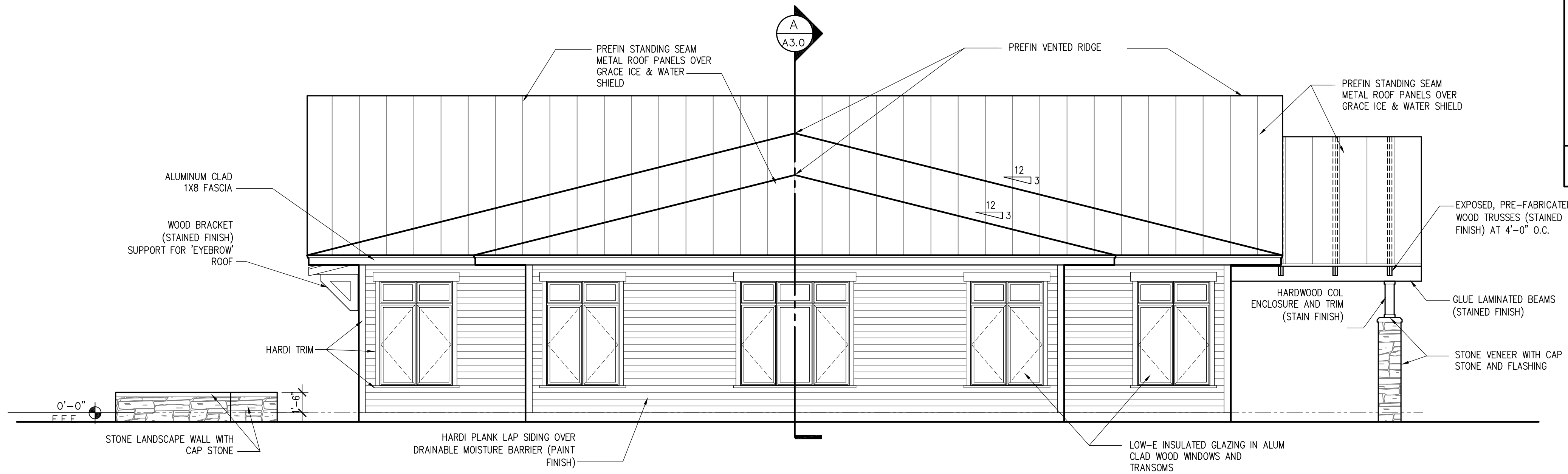
Sheet Information:  
  
EXTERIOR  
ELEVATIONS  
SHEET 1.

Sheet Number:

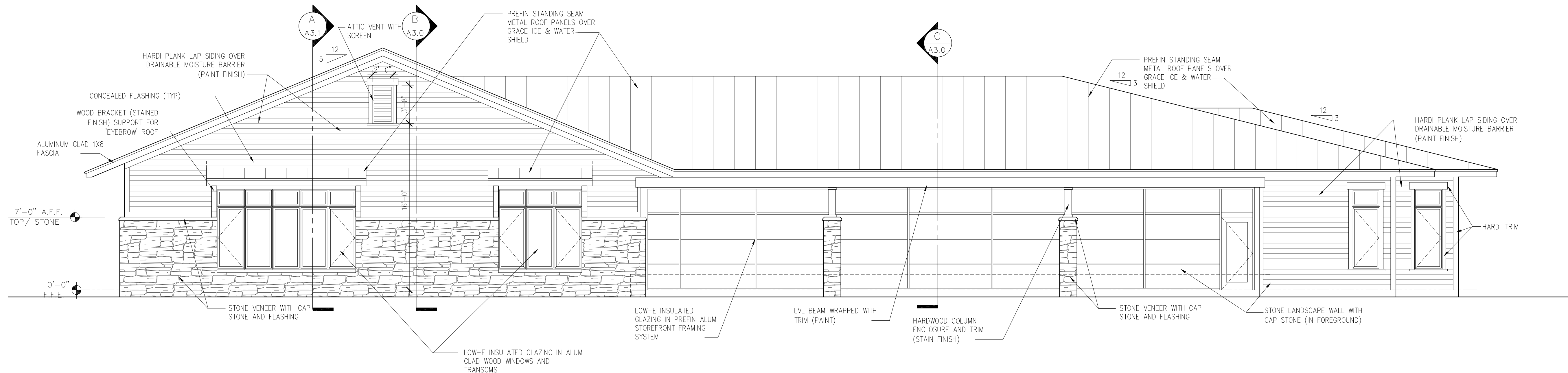
A2.0



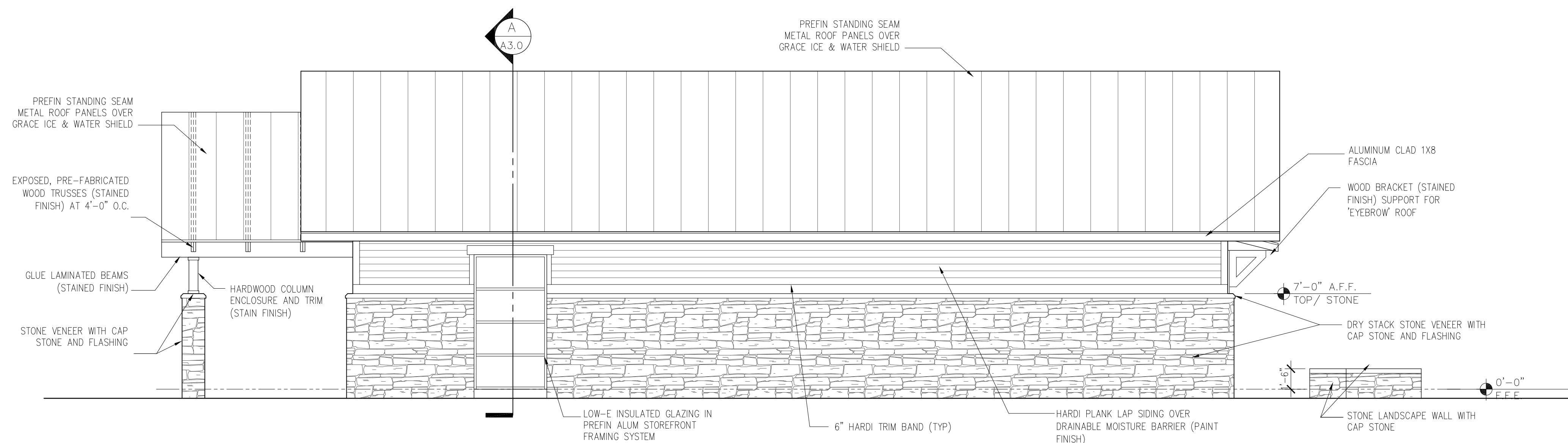
NORTH ELEVATION	
A	SCALE: 3/16" = 1'-0"
TRIM DETAILS	
1	SCALE: N.T.S.



EAST ELEVATION	
B	SCALE: 3/16" = 1'-0"



C SOUTH ELEVATION  
SCALE: 3/16" = 1'-0"



D WEST ELEVATION  
SCALE: 3/16" = 1'-0"



Document Issue Record		
No.	Date	Description
A	03.15.07	50% COMPLETION
B	04.17.07	90% COMPLETION
C	05.18.07	100% COMPLETION
D	09.14.07	100% RE-SUBMITTAL

USFS Proj. No.  
MOMA Proj. No. 0204.16  
date: 10/24/07

Sheet Information:  
EXTERIOR  
ELEVATIONS  
SHEET 2.

Sheet Number: