



The site plan illustrates the layout of the Mowed Campground. Key features include:

- Boundaries:** The "MOWED CAMPGROUND BOUNDARY" is marked with a dashed line. Other boundaries for "ASPHALT" and "GRAVEL" areas are also indicated.
- Infrastructure:** A "VAULT TOILET BATHROOM" is located near the top center. Several "ASPHALT" and "GRAVEL" areas are labeled throughout the site.
- Numbered Points:** Numerous points are marked with numbers in circles (e.g., 1, 2, 3, 4, 5, 6, 7, 8, 9, 10, 11, 12, 13, 14, 15, 16, 17, 18, 19, 20, 21, 22, 23, 24). Some points are also labeled with "P1" followed by a number (e.g., P1-1, P1-2, P1-3, P1-4, P1-5, P1-6, P1-7, P1-8, P1-9, P1-10, P1-11, P1-12, P1-13, P1-14, P1-15, P1-16, P1-17, P1-18, P1-19, P1-20, P1-21, P1-22, P1-23, P1-24).
- Other Features:** The plan includes various symbols for trees, shrubs, and other vegetation. A north arrow is located in the upper right corner.




US Army Corps of Engineers Omaha District

THIS PROJECT WAS DESIGNED BY THE OMAHA DISTRICT OF THE US ARMY CORPS OF ENGINEERS. THE INITIALS OR SIGNATURES AND REGISTRATION DESIGNATIONS OF INDIVIDUALS APPEAR ON THESE PROJECT DOCUMENTS WITHIN THE SCOPE OF THEIR EMPLOYMENT AS REQUIRED BY ER 1110-1-8152

SIGNATURES AFFIXED BELOW INDICATE OFFICIAL RECOMMENDATION AND APPROVAL OF DRAWINGS IN THIS SET.

<p><i>[Signature]</i></p> <p>Digitally signed by DAVENPORT WILLIAM C. 13847360 62271 Date: 2022.11.01 15:32:42 -05'00'</p> <p>XXXXXXXXXX</p>	<p>SUBMITTED</p> <p>LINDGREN SCOTT A. 13847360 BY: TT A.1384736048 62271 Date: 2022.11.01 15:30:08 -05'00'</p> <p>CHIEF: ELECTRICAL SECTION</p>	<p>P.</p>
<p>CHIEF, DESIGN BRANCH</p>	<p>SUBMITTED BY:</p>	
<p>_____ 01-Jan-2000</p>	<p>CHIEF: SUBMITTED BY:</p>	
<p>CHIEF, BRANCH</p>	<p>CHIEF: SUBMITTED BY:</p>	
<p>_____ 01-Jan-2000</p>	<p>CHIEF: SUBMITTED BY:</p>	
<p>CHIEF BRANCH</p>	<p>CHIEF: SUBMITTED BY:</p>	
<p><i>[Signature]</i></p> <p>STURDIVANT PETER L AURENCE 1154669589 2022.12.20 10:47:17 -07'00'</p>	<p>SUBMITTED BY:</p>	
<p>_____ 20-Dec-2022</p>	<p>SUBMITTED HOFFMAN MILDRED BY: ED L.1386910444 Date: 2022.11.31 09:34:00'00'</p>	
<p>CHIEF, ENGINEERING DIVISION, P.E.</p>	<p>CD PROJECT COORDINATOR</p>	

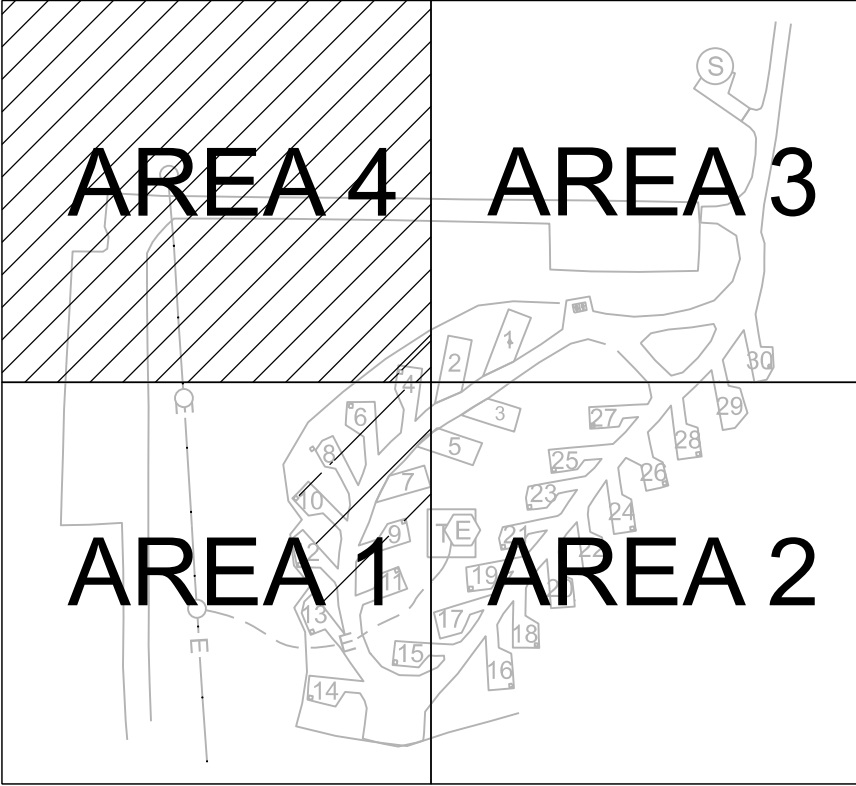
[illegible]

U.S. ARMY CORPS OF ENGINEERS OMAHA DISTRICT 1616 CAPITOL AVE OMAHA, NE 68102	DESIGNED BY: M. HOFFMAN	ISSUE DATE: 02/22
	DRAWN BY: M. HOFFMAN	SUBJECT/CON NO.: W9128F-2300012
	CHECKED BY: M. HOFFMAN	CONTRACT NO.:
	SUBMITTED BY: M. HOFFMAN	FILE NUMBER:
SIZE: FILENAME:		
ANSI D GR00100G-001.dgn		

COVER & INDEX

SHEET ID
G-001

--	--	--	--	--	--	--	--	--	--	--	--	--	--	--	--	--	--	--	--	--	--	--	--	--	--	--	--	--	--	--	--	--	--	--	--	--	--	--	--	--	--	--	--	--	--	--	--	--	--	--	--	--	--	--	--	--	--	--	--	--	--	--	--	--	--	--	--	--	--	--	--	--	--	--	--	--	--	--	--	--	--	--	--	--	--	--	--	--	--	--	--	--	--	--	--	--	--	--	--	--	--	--	--	--	--	--	--	--	--	--	--	--	--	--	--	--	--	--	--	--	--	--	--	--	--	--	--	--	--	--	--	--	--	--	--	--	--	--	--	--	--	--	--	--	--	--	--	--	--	--	--	--	--	--	--	--	--	--	--	--	--	--	--	--	--	--	--	--	--	--	--	--	--	--	--	--	--	--	--	--	--	--	--	--	--	--	--	--	--	--	--	--	--	--	--	--	--	--	--	--	--	--	--	--	--	--	--	--	--	--	--	--	--	--	--	--	--	--	--	--	--	--	--	--	--	--	--	--	--	--	--	--	--	--	--	--	--	--	--	--	--	--	--	--	--	--	--	--	--	--	--	--	--	--	--	--	--	--	--	--	--	--	--	--	--	--	--	--	--	--	--	--	--	--	--	--	--	--	--	--	--	--	--	--	--	--	--	--	--	--	--	--	--	--	--	--	--	--	--	--	--	--	--	--	--	--	--	--	--	--	--	--	--	--	--	--	--	--	--	--	--	--	--	--	--	--	--	--	--	--	--	--	--	--	--	--	--	--	--	--	--	--	--	--	--	--	--	--	--	--	--	--	--	--	--	--	--	--	--	--	--	--	--	--	--	--	--	--	--	--	--	--	--	--	--	--	--	--	--	--	--	--	--	--	--	--	--	--	--	--	--	--	--	--	--	--	--	--	--	--	--	--	--	--	--	--	--	--	--	--	--	--	--	--	--	--	--	--	--	--	--	--	--	--	--	--	--	--	--	--	--	--	--	--	--	--	--	--	--	--	--	--	--	--	--	--	--	--	--	--	--	--	--	--	--	--	--	--	--	--	--	--	--	--	--	--	--	--	--	--	--	--	--	--	--	--	--	--	--	--	--	--	--	--	--	--	--	--	--	--	--	--	--	--	--	--	--	--	--	--	--	--	--	--	--	--	--	--	--	--	--	--	--	--	--	--	--	--	--	--	--	--	--	--	--	--	--	--	--	--	--	--	--	--	--	--	--	--	--	--	--	--	--	--	--	--	--	--	--	--	--	--	--	--	--	--	--	--	--	--	--	--	--	--	--	--	--	--	--	--	--	--	--	--	--	--	--	--	--	--	--	--	--	--	--	--	--	--	--	--	--	--	--	--	--	--	--	--	--	--	--	--	--	--	--	--	--	--	--	--	--	--	--	--	--	--	--	--	--	--	--	--	--	--	--	--	--	--	--	--	--	--	--	--	--	--	--	--	--	--	--	--	--	--	--	--	--	--	--	--	--	--	--	--	--	--	--	--	--	--	--	--	--	--	--	--	--	--	--	--	--	--	--	--	--	--	--	--	--	--	--	--	--	--	--	--	--	--	--	--	--	--	--	--	--	--	--	--	--	--	--	--	--	--	--	--	--	--	--	--	--	--	--	--	--	--	--	--	--	--	--	--	--	--	--	--	--	--	--	--	--	--	--	--	--	--	--	--	--	--	--	--	--	--	--	--	--	--	--	--	--	--	--	--	--	--	--	--	--	--	--	--	--	--	--	--	--	--	--	--	--	--	--	--	--	--	--	--	--	--	--	--	--	--	--	--	--	--	--	--	--	--	--	--	--	--	--	--	--	--	--	--	--	--	--	--	--	--	--	--	--	--	--	--	--	--	--	--	--	--	--	--	--	--	--	--	--	--	--	--	--	--	--	--	--	--	--	--	--	--	--	--	--	--	--	--	--	--	--	--	--	--	--	--	--	--	--	--	--	--	--	--	--	--	--	--	--	--	--	--	--	--	--	--	--	--	--	--	--	--	--	--	--	--	--	--	--	--	--	--	--	--	--	--	--	--	--	--	--	--	--	--	--	--	--	--	--	--	--	--	--	--	--	--	--	--	--	--	--	--	--	--	--	--	--	--	--	--	--	--	--	--	--	--	--	--	--	--	--	--	--	--	--	--	--	--	--	--	--	--	--	--	--	--	--	--	--	--	--	--	--	--	--	--	--	--	--	--	--	--	--	--	--	--	--	--	--	--	--	--	--	--	--	--	--	--	--	--	--	--	--	--	--	--	--	--	--	--	--	--	--	--	--	--	--	--	--	--	--	--	--	--	--	--	--	--	--	--	--	--	--	--	--	--	--	--	--	--	--	--	--	--	--	--	--	--	--	--	--	--	--	--	--	--	--	--	--	--	--	--	--	--	--	--	--	--	--	--	--	--	--	--	--	--	--	--	--	--	--	--	--	--	--	--	--	--	--	--	--	--	--	--	--	--	--	--	--	--	--	--	--	--	--	--	--	--	--	--	--	--	--	--	--	--	--	--	--	--	--	--	--	--	--	--	--	--	--	--	--	--	--	--	--	--	--	--	--	--	--	--	--	--	--	--	--	--	--	--	--	--	--	--	--	--	--	--	--	--	--	--	--	--	--	--	--	--	--	--	--	--	--	--	--	--	--	--	--	--	--	--	--	--	--	--	--	--	--	--	--	--	--	--	--	--	--	--	--	--	--	--	--	--	--	--	--	--	--	--	--	--	--	--	--	--	--	--	--	--	--	--	--	--	--	--	--	--	--	--	--	--	--	--	--	--	--	--	--	--	--	--	--	--	--	--	--	--	--	--	--	--	--	--	--	--	--	--	--	--	--	--	--	--	--	--	--	--	--	--	--	--	--	--	--	--	--	--	--	--	--	--	--	--	--	--	--	--	--	--	--	--	--	--	--	--	--	--	--	--	--	--	--	--	--	--	--	--	--	--	--	--	--	--	--	--	--	--	--	--	--	--	--	--	--	--	--	--	--	--	--	--	--	--	--	--	--	--	--	--	--	--	--	--	--	--	--	--	--	--	--	--	--	--	--	--	--	--	--	--	--	--	--	--	--	--	--	--	--	--	--	--	--	--	--	--	--	--




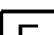
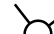






DEMOLITION NOTES

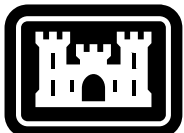
1. UTILITY COMPANY ADDRESS AND CONTACT INFORMATION
MCLEAN ELECTRIC COOPERATIVE (MEC)
4031 ND-37, GARRISON, ND 58540
LUCAS SCHAAF - LUCASJS@MCLEANELECTRIC.COM
PHONE: 701 - 463 - 6715

KEY NOTES

1. UTILITY OWNED TRANSFORMER AND PAD, CONTRACTOR TO COORDINATE REMOVAL WITH UTILITY.
2. UTILITY OWNED METER, CONTRACTOR TO COORDINATE REMOVAL WITH UTILITY.
3. UTILITY OWNED OVERHEAD ELECTRICAL LINES.
4. BASE BID: REMOVAL OF EXISTING POWER PANEL AND MOUNTING STRUCTURE. REMOVAL OF RV PEDESTALS ON CAMPSITES 1 - 11. ORIGINAL WIRING TO CAMPSITES 1 - 11 SHALL BE ABANDONED IN PLACE.
5. BID OPTION 1: REMOVAL OF RV PEDESTALS ON CAMPSITES 12 - 18, 20, 21, 25. ORIGINAL CABLE SHALL BE ABANDONED IN PLACE.
6. BID OPTION 2: REMOVAL OF RV PEDESTALS ON CAMPSITES 19, 22 - 24, AND 26 - 31. ORIGINAL CABLE SHALL BE ABANDONED IN PLACE.
7. UTILITY OWNED DIRECT BURIED ELECTRICAL CABLING. CONTRACTOR TO COORDINATE WITH UTILITY.
8. EXISTING STREET LIGHTS. CONTRACTOR SHALL DISCONNECT AND PROTECT IN PLACE.

LEGEND

- | | |
|---|--|
|  | EXISTING ELECTRICAL CONDUIT/CABLING |
|  | POWER POLE |
|  | EXISTING RV PEDESTALS |
|  | STREET LIGHT |
|  | SINGLE PHASE TRANSFORMER - UTILITY OWNED |
|  | ELECTRIC METER - UTILITY OWNED |
|  | CAMPSITE NUMBER |
|  | FIREPIT |
|  | EXISTING TREES |



**US Army Corps
of Engineers®**

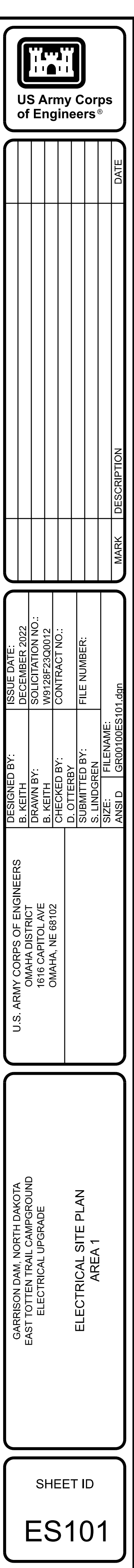
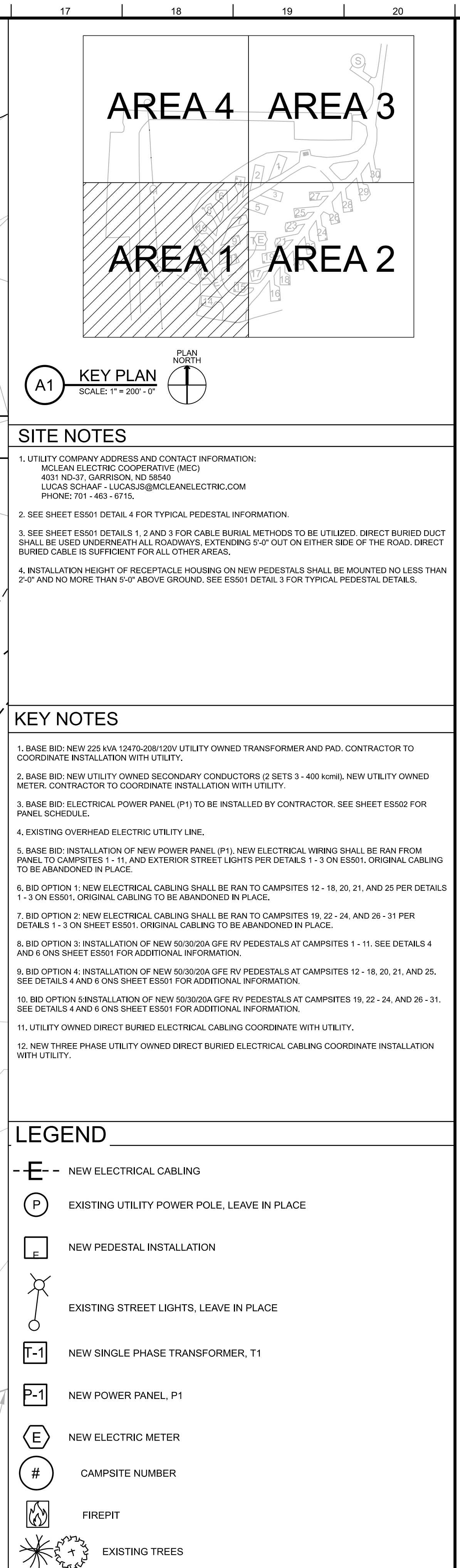
[illegible]

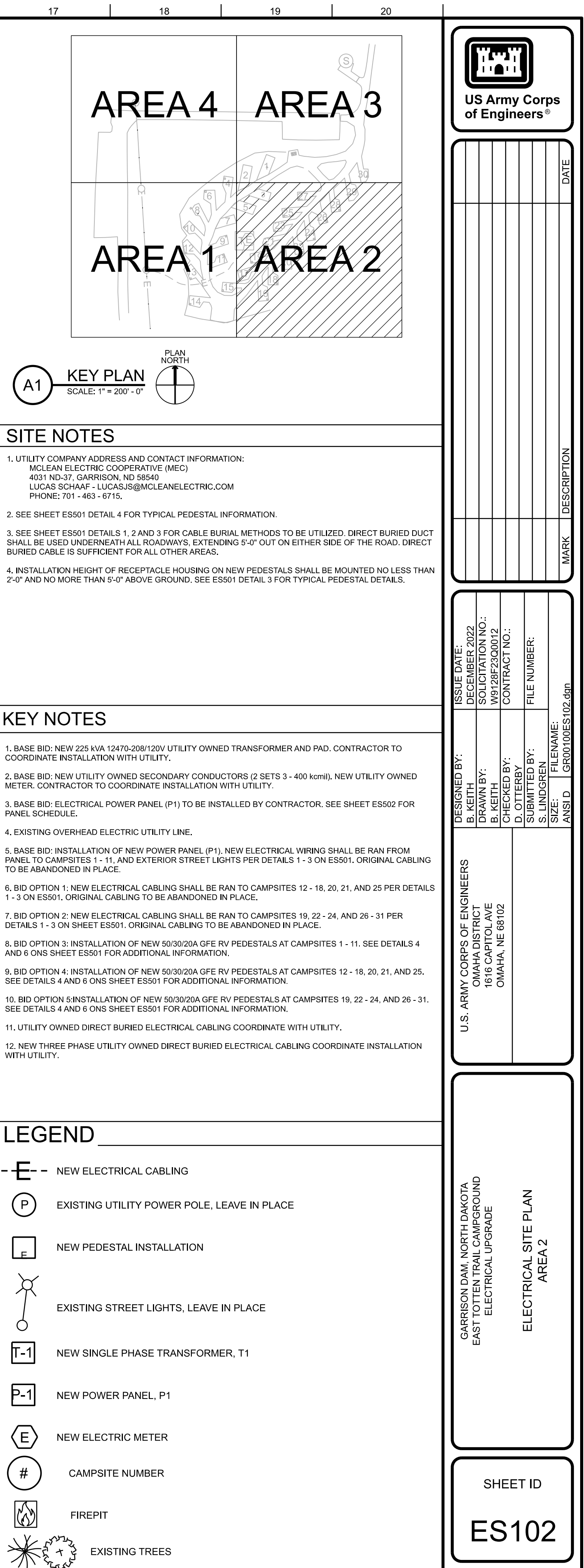
U.S. ARMY CORPS OF ENGINEERS	DESIGNED BY:	ISSUE DATE:
B. KEITH	B. KEITH	DECEMBER 2022
OMAHA DISTRICT	PROJECT NO.:	1616
1616 CAPITOL AVE	B. KEITH	W9128F23Q0012
OMAHA, NE 68102	CHECKED BY:	CONTRACT NO.:
	D. OTTERBY	
	SUBMITTED BY:	FILE NUMBER:
	AND GRANT NO.:	
	SIZE:	FILENAME:
	ANSI D	GR0010ED104.dgn

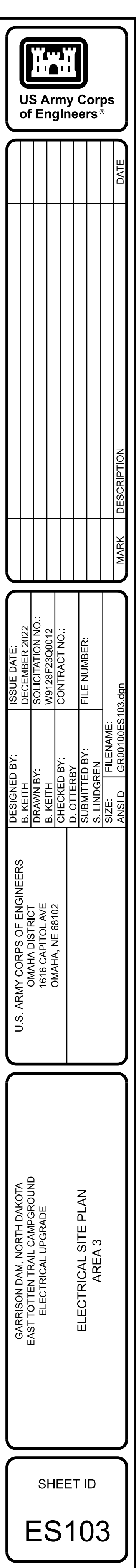
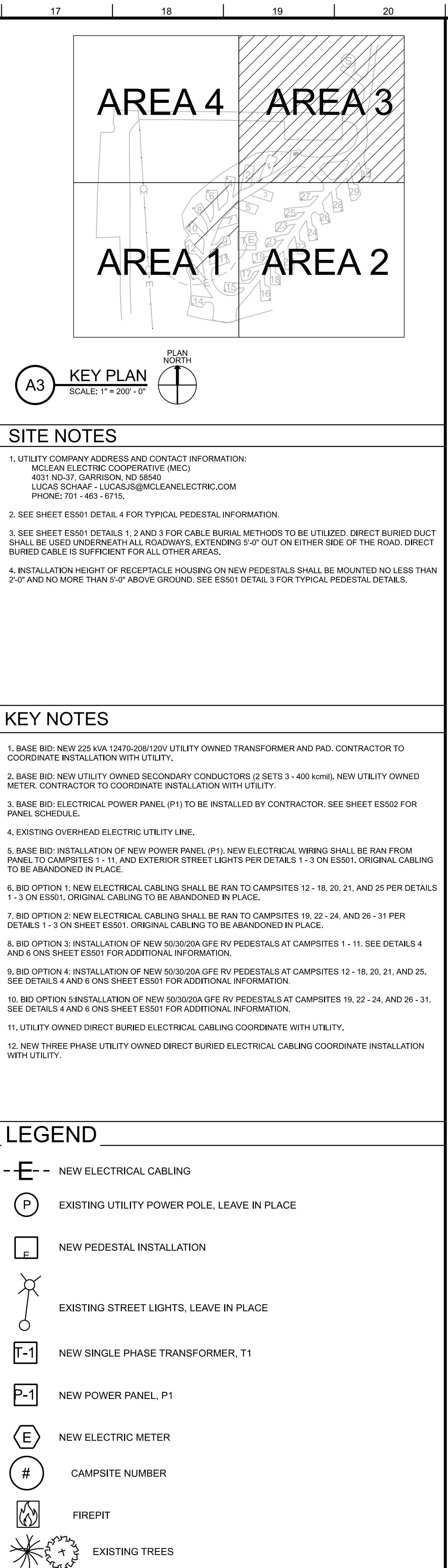
GARRISON DAM, NORTH DAKOTA
EAST TOTTEN TRAIL CAMPGROUND
ELECTRICAL UPGRADE

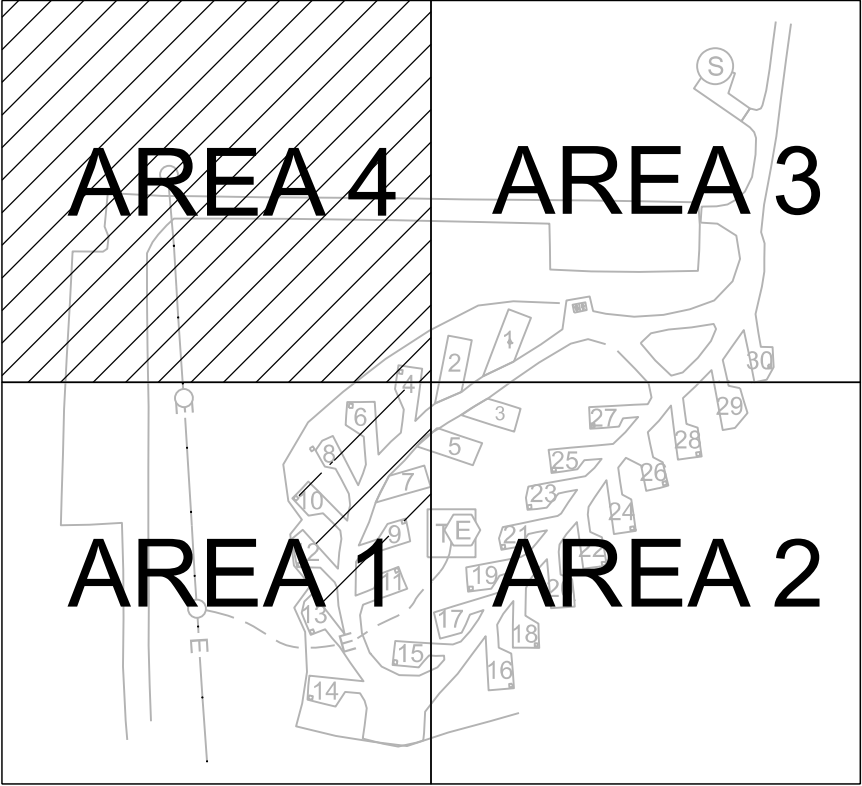
SHEET ID

ED104









SITE NOTES

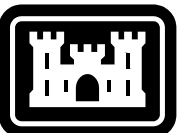
1. UTILITY COMPANY ADDRESS AND CONTACT INFORMATION:
MCLEAN ELECTRIC COOPERATIVE (MEC)
4031 NW 37, GARRISON, MO 65640
LUCAS SCHAFF - LUCASJS@MCLEANELECTRIC.COM
PHONE: 701 - 463 - 6715.
2. SEE SHEET ES501 DETAIL 4 FOR TYPICAL PEADESTAL INFORMATION.
3. SEE SHEET ES501 DETAILS 1, 2 AND 3 FOR CABLE BURIAL METHODS TO BE UTILIZED. DIRECT BURIED DUT SHALL BE USED UNDERNEATH ALL ROADWAYS, EXTENDING 5'-0" OUT ON EITHER SIDE OF THE ROAD. DIRECT BURIED CABLE IS SUFFICIENT FOR ALL OTHER AREAS.
4. INSTALLATION HEIGHT OF RECEPTACLE HOUSING ON NEW PEADESTALS SHALL BE MOUNTED NO LESS THAN 2'-0" AND NO MORE THAN 5'-0" ABOVE GROUND. SEE ES501 DETAIL 3 FOR TYPICAL PEADESTAL DETAILS.

KEY NOTES

1. BASE BID: NEW 225 KVA 12470-208/120V UTILITY OWNED TRANSFORMER AND PAD. CONTRACTOR TO COORDINATE INSTALLATION WITH UTILITY.
2. BASE BID: NEW UTILITY OWNED SECONDARY CONDUCTORS (2 SETS 3 - 400 kcmil). NEW UTILITY OWNED METER. CONTRACTOR TO COORDINATE INSTALLATION WITH UTILITY.
3. BASE BID: ELECTRICAL POWER PANEL (P1) TO BE INSTALLED BY CONTRACTOR. SEE SHEET ES502 FOR PANEL SCHEDULE.
4. EXISTING OVERHEAD ELECTRIC UTILITY LINE.
5. BASE BID: INSTALLATION OF NEW POWER PANEL (P1). NEW ELECTRICAL WIRING SHALL BE RAN FROM PANEL TO CAMPSITES 1 - 3 AND EXTERIOR STREET LIGHTS PER DETAILS 1 - 3 ON ES501. ORIGINAL CABLING TO BE ABANDONED IN PLACE.
6. BID OPTION 1: NEW ELECTRICAL CABLING SHALL BE RAN TO CAMPSITES 12 - 18, 20, 21, AND 25 PER DETAILS 1 - 3 ON ES501. ORIGINAL CABLING TO BE ABANDONED IN PLACE.
7. BID OPTION 2: NEW ELECTRICAL CABLING SHALL BE RAN TO CAMPSITES 19 - 22 - 24, AND 26 - 31 PER DETAILS 1 - 3 ON SHEET ES501. ORIGINAL CABLING TO BE ABANDONED IN PLACE.
8. BID OPTION 3: INSTALLATION OF NEW 50/30/20A GFE RV PEDESTALS AT CAMPSITES 1 - 11. SEE DETAILS 4 AND 6 ON SHEET ES501 FOR ADDITIONAL INFORMATION.
9. BID OPTION 4: INSTALLATION OF NEW 50/30/20A GFE RV PEDESTALS AT CAMPSITES 12 - 18, 20, 21, AND 25. SEE DETAILS 4 AND 6 ON SHEET ES501 FOR ADDITIONAL INFORMATION.
10. BID OPTION 5: INSTALLATION OF NEW 50/30/20A GFE RV PEDESTALS AT CAMPSITES 19, 22 - 24, AND 26 - 31. SEE DETAILS 4 AND 6 ON SHEET ES501 FOR ADDITIONAL INFORMATION.
11. UTILITY OWNED DIRECT BURIED ELECTRICAL CABLING COORDINATE WITH UTILITY.
12. NEW THREE PHASE UTILITY OWNED DIRECT BURIED ELECTRICAL CABLING COORDINATE INSTALLATION WITH UTILITY.

LEGEND

- | | |
|--|---|
| | NEW ELECTRICAL CABLING |
| | EXISTING UTILITY POWER POLE, LEAVE IN PLACE |
| | NEW PEDESTAL INSTALLATION |
| | EXISTING STREET LIGHTS, LEAVE IN PLACE |
| | NEW SINGLE PHASE TRANSFORMER, T1 |
| | NEW POWER PANEL, P1 |
| | NEW ELECTRIC METER |
| | CAMPSITE NUMBER |
| | FIREPIT |
| | EXISTING TREES |



**US Army Corps
of Engineers®**

[illegible]

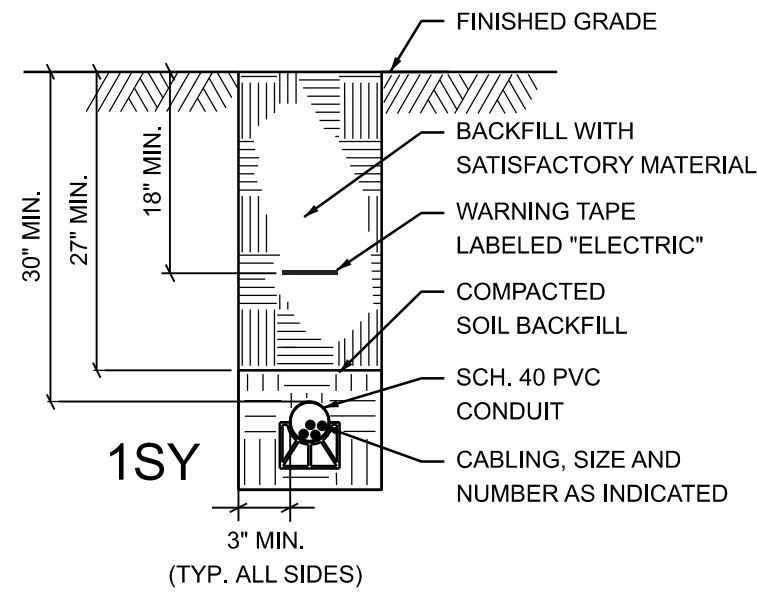
U.S. ARMY CORPS OF ENGINEERS	DESIGNED BY:	ISSUE DATE:
B. KEITH	B. KEITH	DECEMBER 2022
OMAHA DISTRICT	CHECKED BY:	PROJECT NO.:
1616 CAPITOL AVE	B. KEITH	W9128F23Q0012
OMAHA, NE 68102	CONTRACT NO.:	
	D. OTTERBY	
	SUBMITTED BY:	FILE NUMBER:
	AND GRADING	
	SIZE:	FILENAME:
	ANSI D	GR00100ES104.dgn

GARRISON DAM, NORTH DAKOTA
EAST TOTTEN TRAIL CAMPGROUND
ELECTRICAL UPGRADE

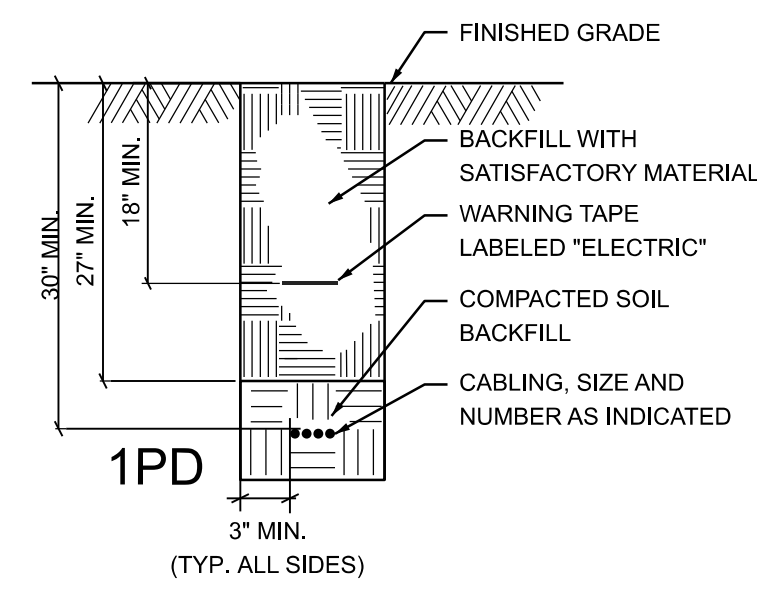
ELECTRICAL SITE PLAN
AREA 4

SHEET ID

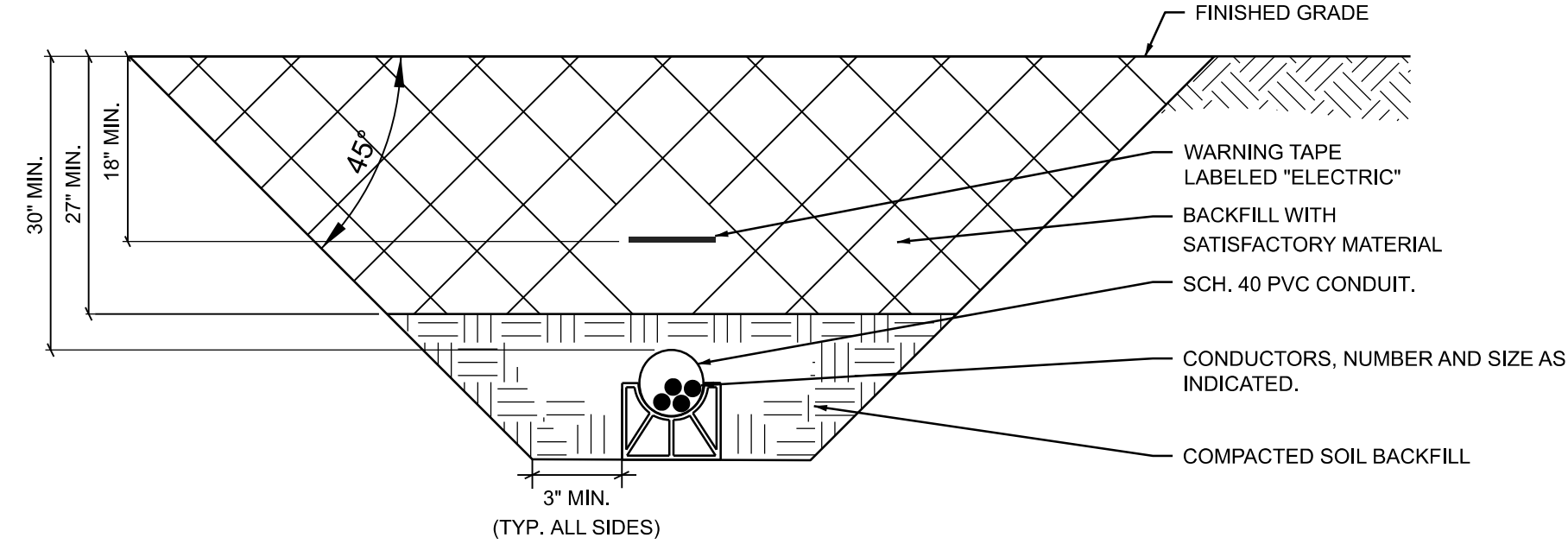
ES104



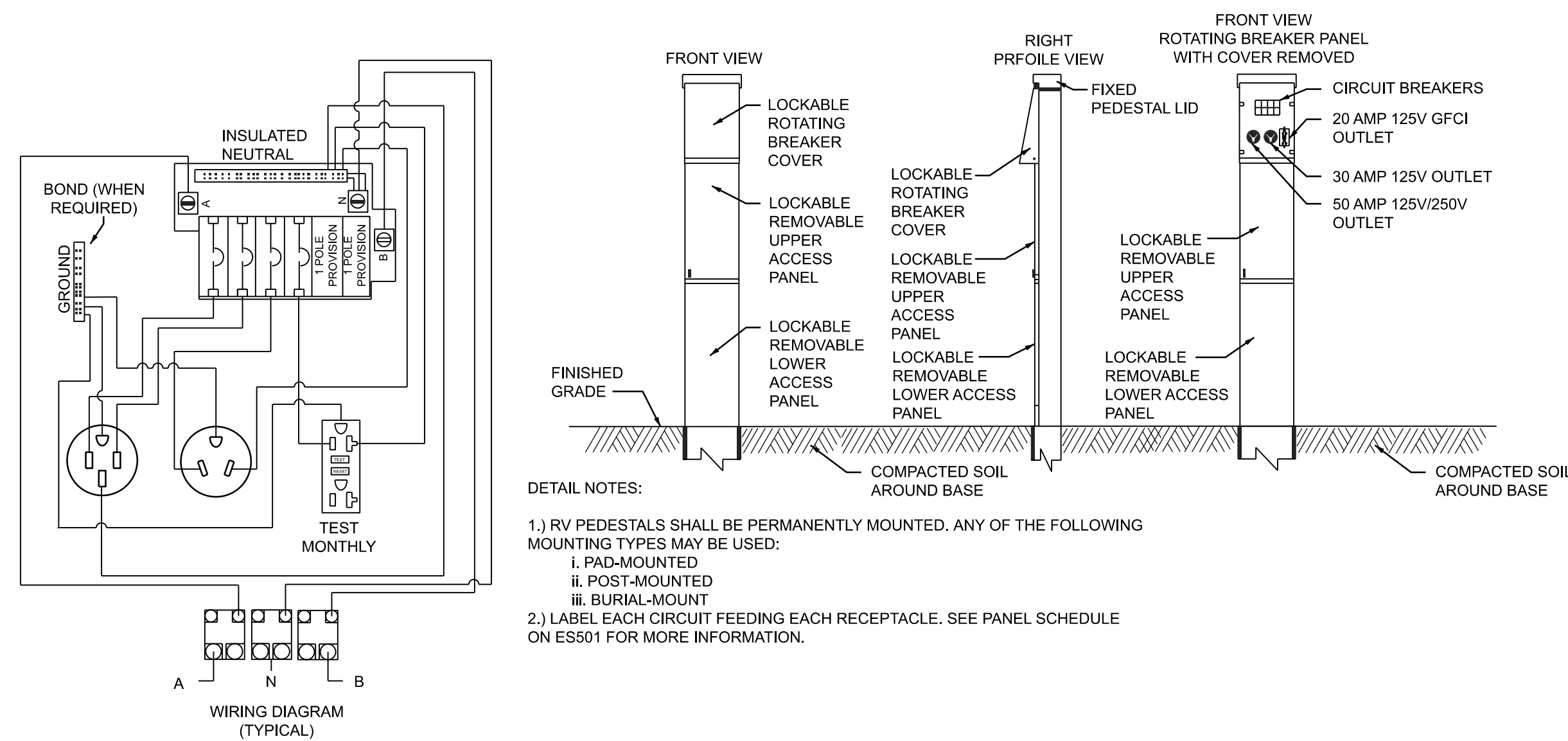
1 DIRECT BURIED DUCT
N.T.S



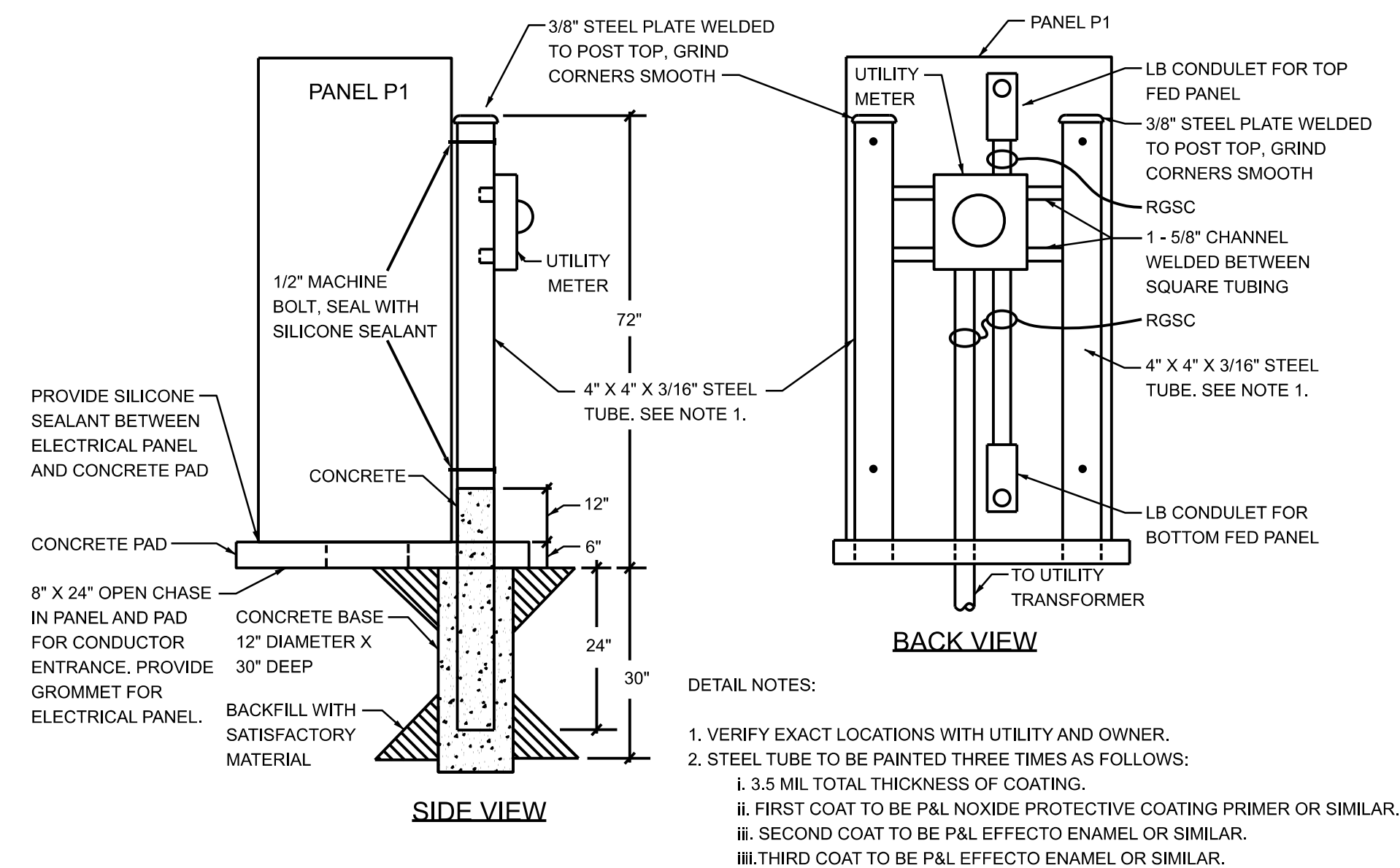
2 DIRECT BURIED CABLE
N.T.S



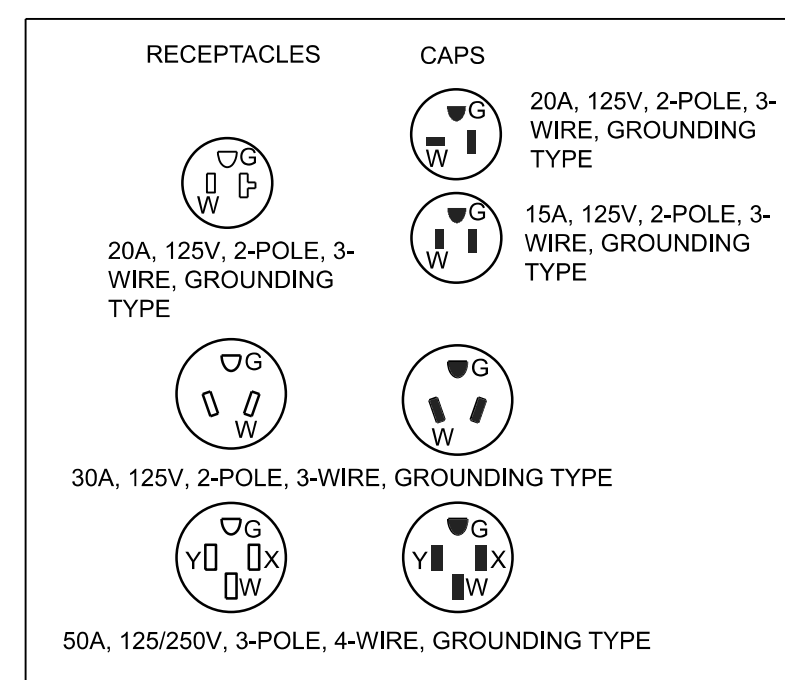
3 TRENCHING DETAIL



4 50/30/20 AMP UN-METERED RV PEDESTAL (TYP.)
N.T.S



5 PANEL (P1) MOUNTING STRUCTURE



6 TYPICAL 50/30/20 AMP RECEPTACLES
N.T.S



**U.S. Army Corps
Engineers®**

[illegible]

DRAWN BY: B. KEITH CHECKED BY: D. OTTERBY SUBMITTED BY: D. ANDREWS FILE NUMBER: FILE NAME: SIZE: ANSI/D.	SOLICITATION NO.:	W9128F23Q0012
	CONTRACT NO.:	
1616 CAPITOL AVE OMAHA, NE 68102 GEOR10WES501.dgn		

ELECTRICAL UPGRADE

ELECTRICAL DETAILS

PEDESTALS AND DIRECT BURIAL CABLING

SHEET ID

E501

