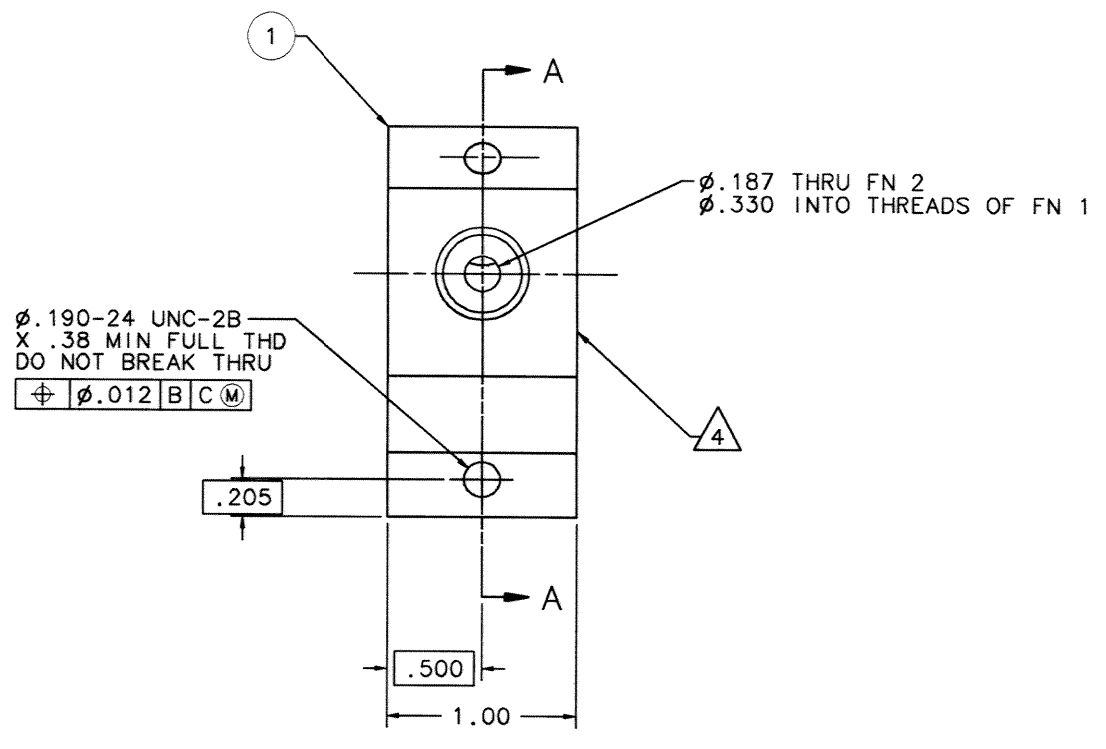
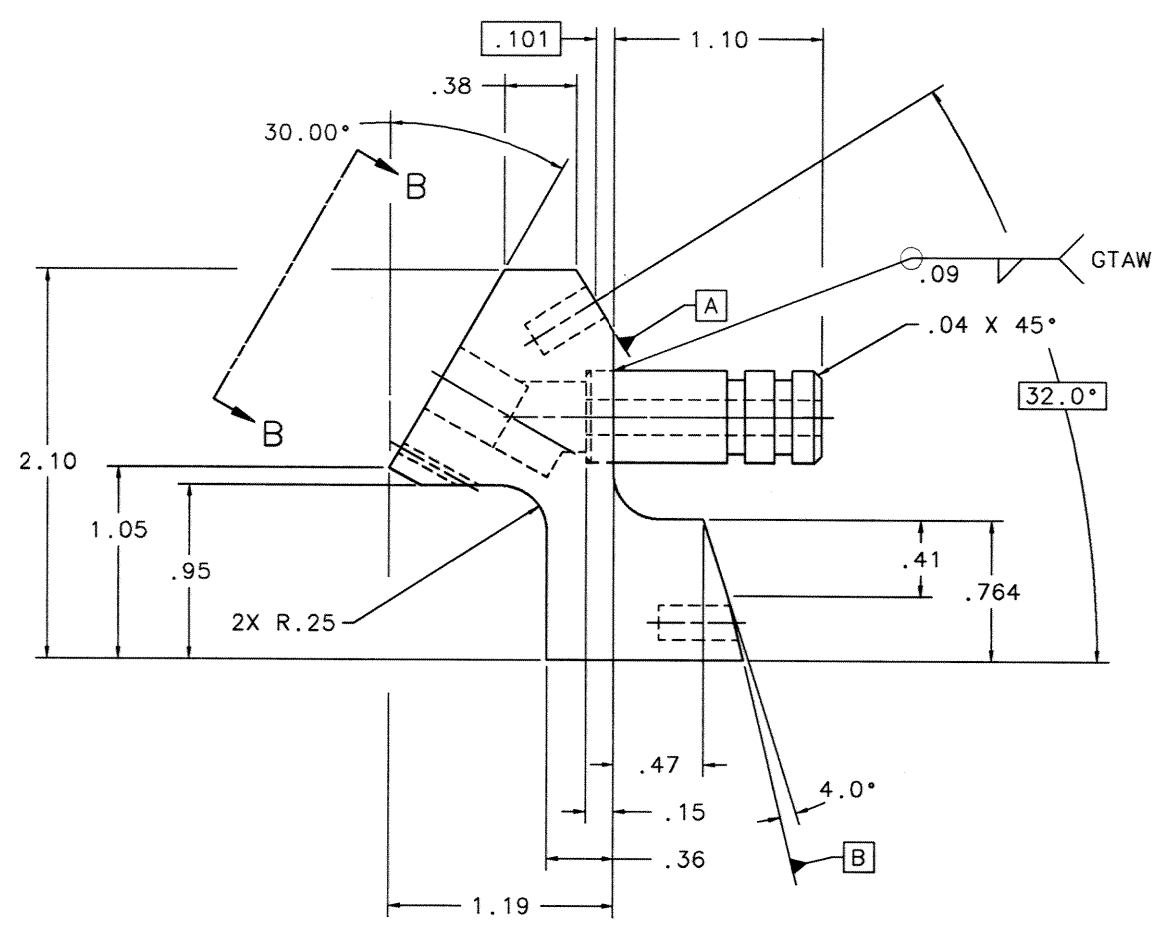
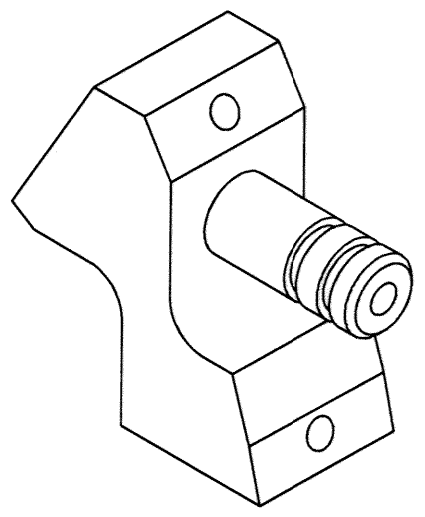
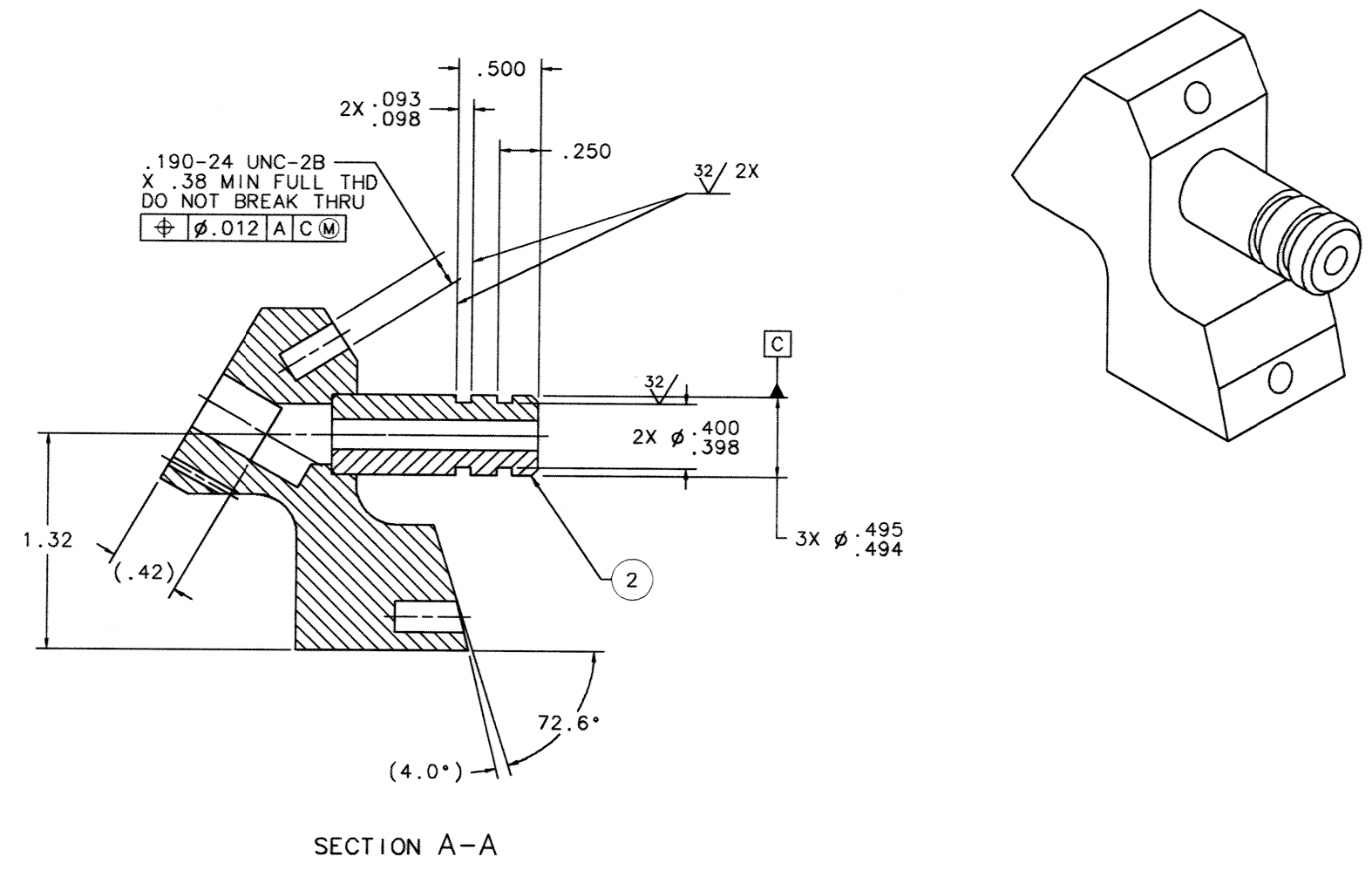
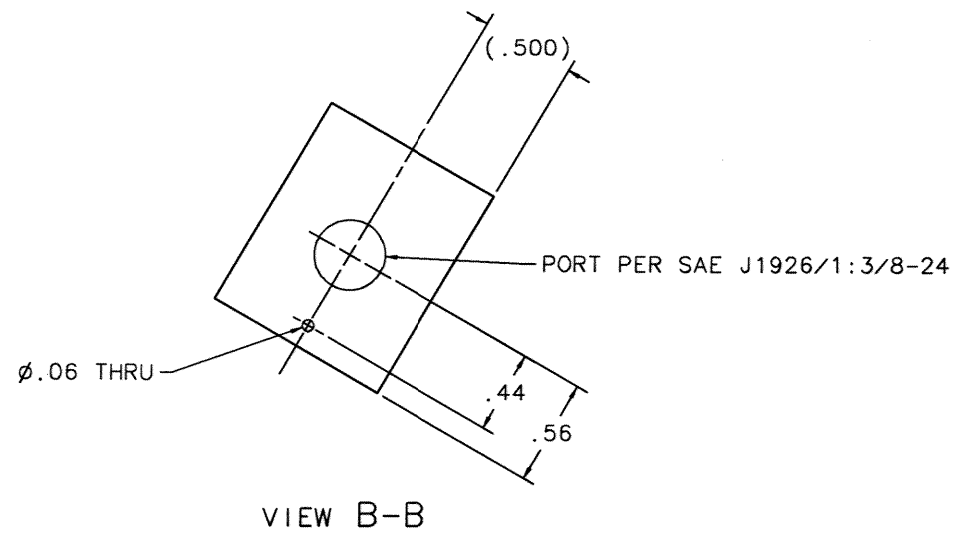



REVISION HISTORY			
REV	DESCRIPTION	DATE	APPROVED
-	RELEASED PER IR 13568	04-05-19	BP



- NOTES:
- MATERIAL: STEEL, CRES TYPE 302/304 FLAT PER SAE AMS-5513 OR EQUAL.
 - MATERIAL: STEEL, CRES 304 ROUND PER SAE AMS-5639.
 - WELD PER AWS D17.1, CLASS A, USING ER308 FILLER METAL PER AWS A5.9, SECTION 4 THROUGH 6 SHALL APPLY.
 - PERMANENTLY MARK PART NUMBER (DRAWING NUMBER AND DASH NUMBER) APPROXIMATELY WHERE SHOWN. METHOD AND SIZE OPTIONAL.
 - PASSIVATE PER SAE AMS-QQ-P-35, TYPE VI.
 - LIQUID PENETRANT INSPECT WELDS IN ACCORDANCE WITH ASTM E1417, USING FLUORESCENT PENETRANT INSPECTION MATERIALS CONFORMING TO SAE AMS-2644, TYPE 1, SENSITIVITY LEVEL 3, METHOD OPTIONAL.

		1	2	-2	ROD						2		
		1	1	-1	BLOCK						1		
		-001	FIND NO.	PART OR IDENTIFYING NO.	NOMENCLATURE OR DESCRIPTION				SPECIFICATION		CAGE CODE NOTE		
QTY REQD PER DASH NO.				PARTS LIST									
				UNLESS OTHERWISE SPECIFIED				CONTRACT NO. N00019-68-C-0255		 Orbital Sciences Corporation Launch Systems Group 3380 South Price Road Chandler, Arizona 85248			
TOLERANCE: ALL HOLE DIA				1. INTERPRET PER ASME Y14.100M. 2. DIMENSIONS ARE IN INCHES. 125 3. SURFACE TEXTURE SHALL BE 4. DIMENSIONS APPLY AFTER PLATING. 5. REMOVE ALL BURRS AND SHARP EDGES. .005/.015				DRAWN BY DATE V. LAMEMAN 04-04-06					
FROM THRU TOL				TOLERANCES ON DECIMAL DIMENSIONS: xxx ±.010 xx ±.02 x ±.1				CHECKED BY DATE R. BOASE 04-05-17		TITLE ADAPTER, PRESSURE TRANSDUCER			
0.00 .125 +.004/-.001 .126 .250 +.005/-.001 .251 .500 +.006/-.001 .501 .750 +.008/-.001 .751 1.000 +.010/-.001 1.001 2.000 +.012/-.001 OVER 2.000 +.015/-.005				TOLERANCES ON ANGULAR DIMENSIONS: MACHINED AND LOCATING ±0°30' CHAMFERS ±5° FORMED ±1°				APPROVED BY DATE B. PITTERLE 04-04-06					
-001	1030-5220			TOP ASSEMBLY NO.				APPROVED BY DATE L. MORALEZ 04-04-13		SIZE CAGE CODE DRAWING NO. REV			
DASH NO.	NEXT ASSY			APPLICATION				APPROVED BY DATE D. PEDERSEN 04-04-19		E 27555 1030-5214 -			
								SCALE: 2/1		WEIGHT: -		SHEET 1 OF 1	

1030-5214