

Material/Contract	Room	North/South	East/West	Width	Length
Repro	110/111 (*)	44' 9"	11' 7"		
Repro	110 alcove (*)	5' 2"	6' 8"		
Repro	210	15' 0"	11' 11"		
Repro	207	11' 8"	11' 11"		
Repro	Front stairs – flight 1			5' 4"	16' 5"
Repro	Front stairs – flight 2			3' 8"	8' 10"
Repro	Front stairs – flight 3			3' 6"	11' 1"
Repro	Back stairs – flight 1			3' 11"	17' 7"
Repro	Back stairs – flight 2			2' 11"	8' 11"
Repro	Back stairs – flight 3			3' 1"	10' 1"
Repro	Attic stairs – flight 1			2' 11"	12' 4"
Repro	Attic stairs – flight 2			3' 2"	10' 9"
Repro	Attic stairs – flight 3			3' 0"	7' 9"

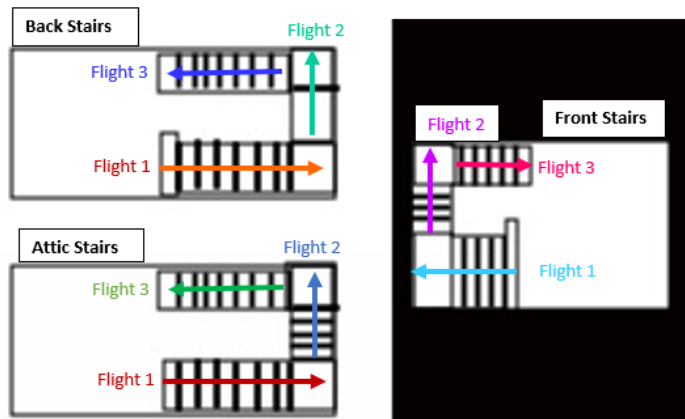


Figure 1: Stairs

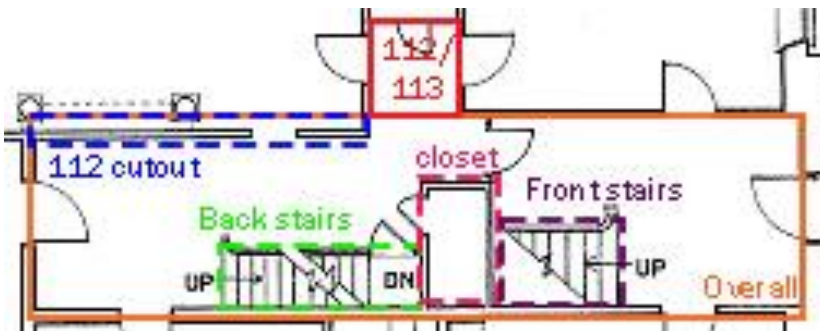


Figure 2: *Note that the calculation includes ONLY the overall calculation and the 112/113 alcove calculation. Since both stairs, the closet, and the bump of RM112 will all be cut out, this is a significant overcalculation