



U.S. Department of Veterans Affairs

Veterans Health Administration
VA Portland Health Care System

PORTLAND CERNER TRAILERS

VA PROJECT NO. 648-20-107

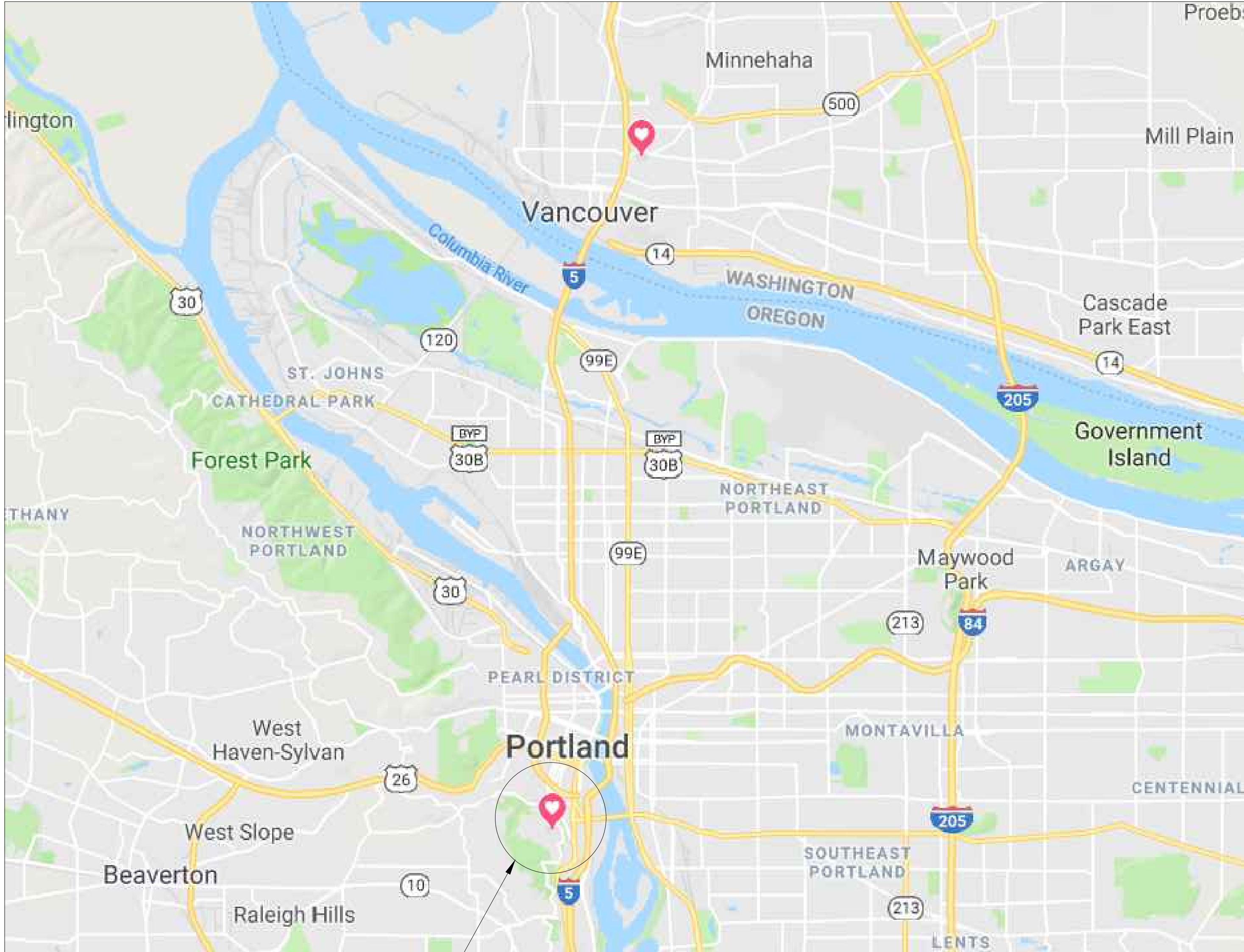
PROJECT NOTES:

PROJECT WORK CAN BEGIN AT NTP BUT FINAL CONNECTIONS CANNOT BE MADE UNTIL MODULAR UNITS ARE DELIVERED MARCH 28, 2021. ALL WORK MUST BE COMPLETE BY APRIL 16, 2021. ALL WORK DONE PRIOR TO MODULAR UNIT DELIVERY SHALL NOT BLOCK MODULAR INSTALL PATH OF TRAVEL. MODULAR UNITS WILL ENTER FROM THE EAST, PAST BUILDING 6 AND PAST BUILDING T51.

DRAWING INDEX

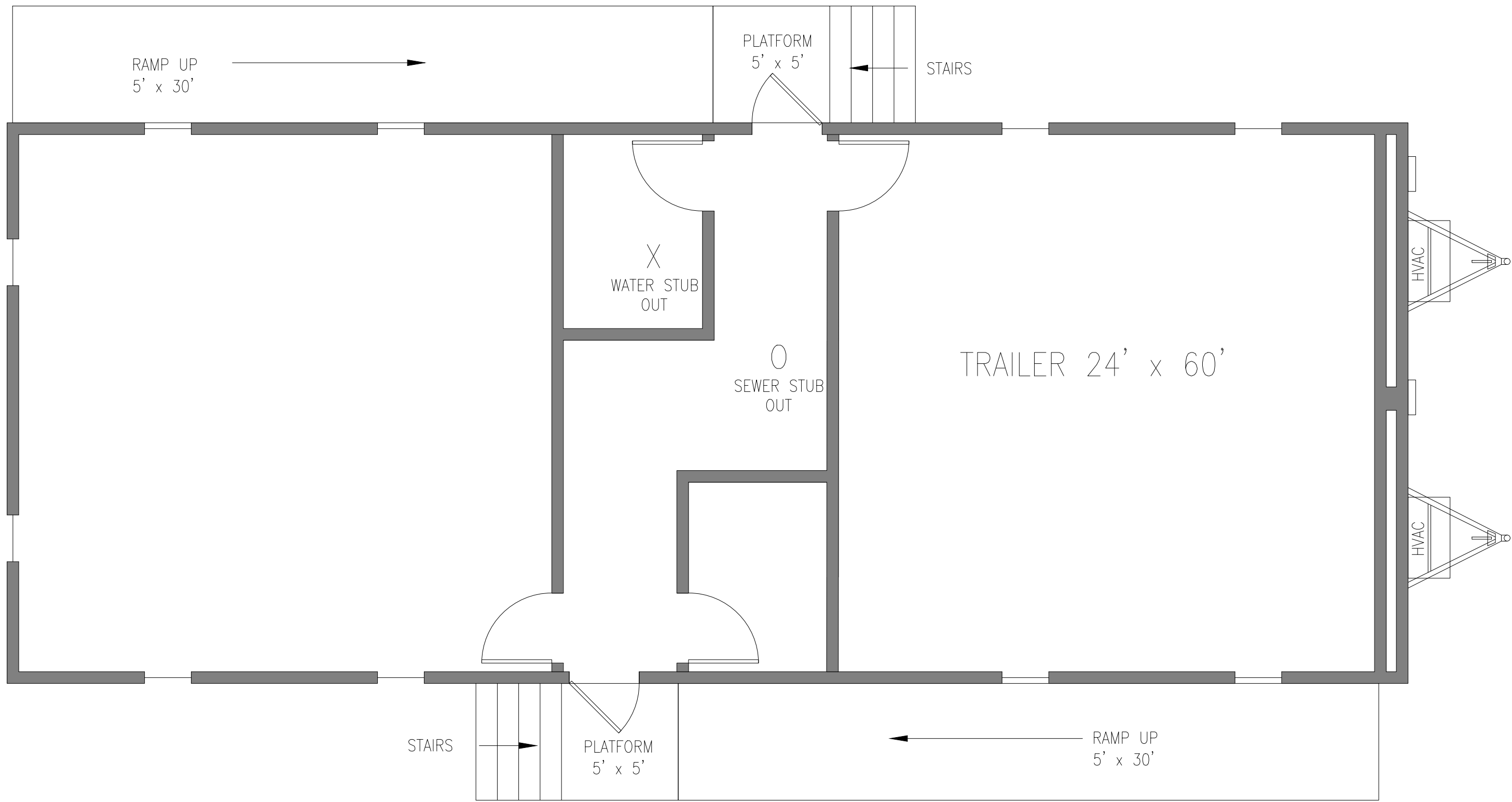
Sheet List Table

Sheet Number	Sheet Title
CVR	Portland Project Cover
A3.0	Portland Site Plan - Water and Sewer
A4.0	Portland Site Plan - Electrical & Telecom



Portland Campus
3710 SW US Veterans Hospital Road
Portland, OR 97239-2964

1 PORTLAND LOCATION MAP
SCALE: NOT TO SCALE



2 TYPICAL TRAILER LAYOUT
SCALE: NOT TO SCALE

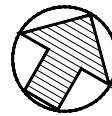
REVISIONS	DATE

VA Portland Health Care System
(VAPORHCS)



Drawing Title				
PORTLAND PROJECT COVER				
Approved: Proj. Eng DODIER	Approved: Infect. Cont.	Approved: Chief P&O	Approved: Chief M&R	Approved: Safety Mgr.
Approved: Service Chief	Approved: Chief Facilities Mgmt	Approved: VAPORHCS Director		

Project Title		
CERNER TRAILERS		
Building No. SITE	Checked By/Proj.Mgr FMS	Drawn By NCK
Location PORTLAND CAMPUS		
Project No. 648-20-107		
Drawing No. CVR		
Dwg. 1 of 3		



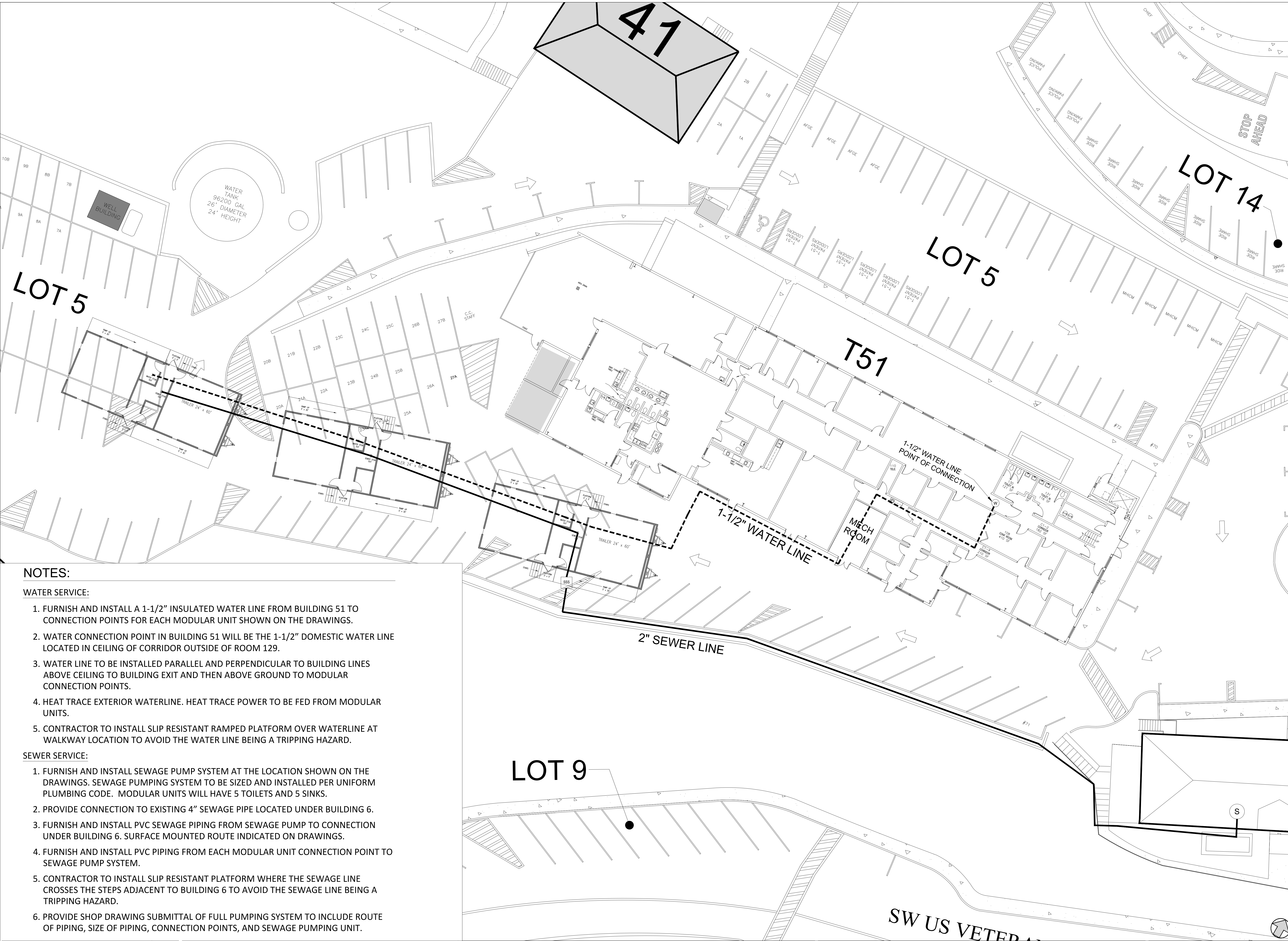
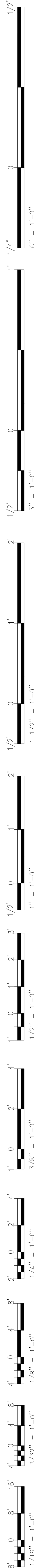
SCALE: NO SCALE

Date
12/2/20

Project No.
648-20-107

Dwg. 1 of 3

PORTLAND PROJECT COVER



- NOTES:**
- WATER SERVICE:**
- 1. FURNISH AND INSTALL A 1-1/2" INSULATED WATER LINE FROM BUILDING 51 TO CONNECTION POINTS FOR EACH MODULAR UNIT SHOWN ON THE DRAWINGS.
 - 2. WATER CONNECTION POINT IN BUILDING 51 WILL BE THE 1-1/2" DOMESTIC WATER LINE LOCATED IN CEILING OF CORRIDOR OUTSIDE OF ROOM 129.
 - 3. WATER LINE TO BE INSTALLED PARALLEL AND PERPENDICULAR TO BUILDING LINES ABOVE CEILING TO BUILDING EXIT AND THEN ABOVE GROUND TO MODULAR CONNECTION POINTS.
 - 4. HEAT TRACE EXTERIOR WATERLINE. HEAT TRACE POWER TO BE FED FROM MODULAR UNITS.
 - 5. CONTRACTOR TO INSTALL SLIP RESISTANT RAMPED PLATFORM OVER WATERLINE AT WALKWAY LOCATION TO AVOID THE WATER LINE BEING A TRIPPING HAZARD.
- SEWER SERVICE:**
- 1. FURNISH AND INSTALL SEWAGE PUMP SYSTEM AT THE LOCATION SHOWN ON THE DRAWINGS. SEWAGE PUMPING SYSTEM TO BE SIZED AND INSTALLED PER UNIFORM PLUMBING CODE. MODULAR UNITS WILL HAVE 5 TOILETS AND 5 SINKS.
 - 2. PROVIDE CONNECTION TO EXISTING 4" SEWAGE PIPE LOCATED UNDER BUILDING 6.
 - 3. FURNISH AND INSTALL PVC SEWAGE PIPING FROM SEWAGE PUMP TO CONNECTION UNDER BUILDING 6. SURFACE MOUNTED ROUTE INDICATED ON DRAWINGS.
 - 4. FURNISH AND INSTALL PVC PIPING FROM EACH MODULAR UNIT CONNECTION POINT TO SEWAGE PUMP SYSTEM.
 - 5. CONTRACTOR TO INSTALL SLIP RESISTANT PLATFORM WHERE THE SEWAGE LINE CROSSES THE STEPS ADJACENT TO BUILDING 6 TO AVOID THE SEWAGE LINE BEING A TRIPPING HAZARD.
 - 6. PROVIDE SHOP DRAWING SUBMITTAL OF FULL PUMPING SYSTEM TO INCLUDE ROUTE OF PIPING, SIZE OF PIPING, CONNECTION POINTS, AND SEWAGE PUMPING UNIT.

REVISIONS		DATE

VA Portland Health Care System
(VAPORHCS)



Drawing Title PORTLAND SITE PLAN - WATER AND SEWER				
Approved: Proj Eng DODIER	Approved: Infect Cont	Approved: Chief P&O	Approved: Chief M&R	Approved: Safety Mgr.
Approved: Service Chief	Approved: Chief Facilities Mgmt		Approved: VAPORHCS Director	

Project Title CERNER TRAILERS		
Building No. SITE	Checked By/Proj Mgr FMS	Drawn By NCK
Location PORTLAND CAMPUS		

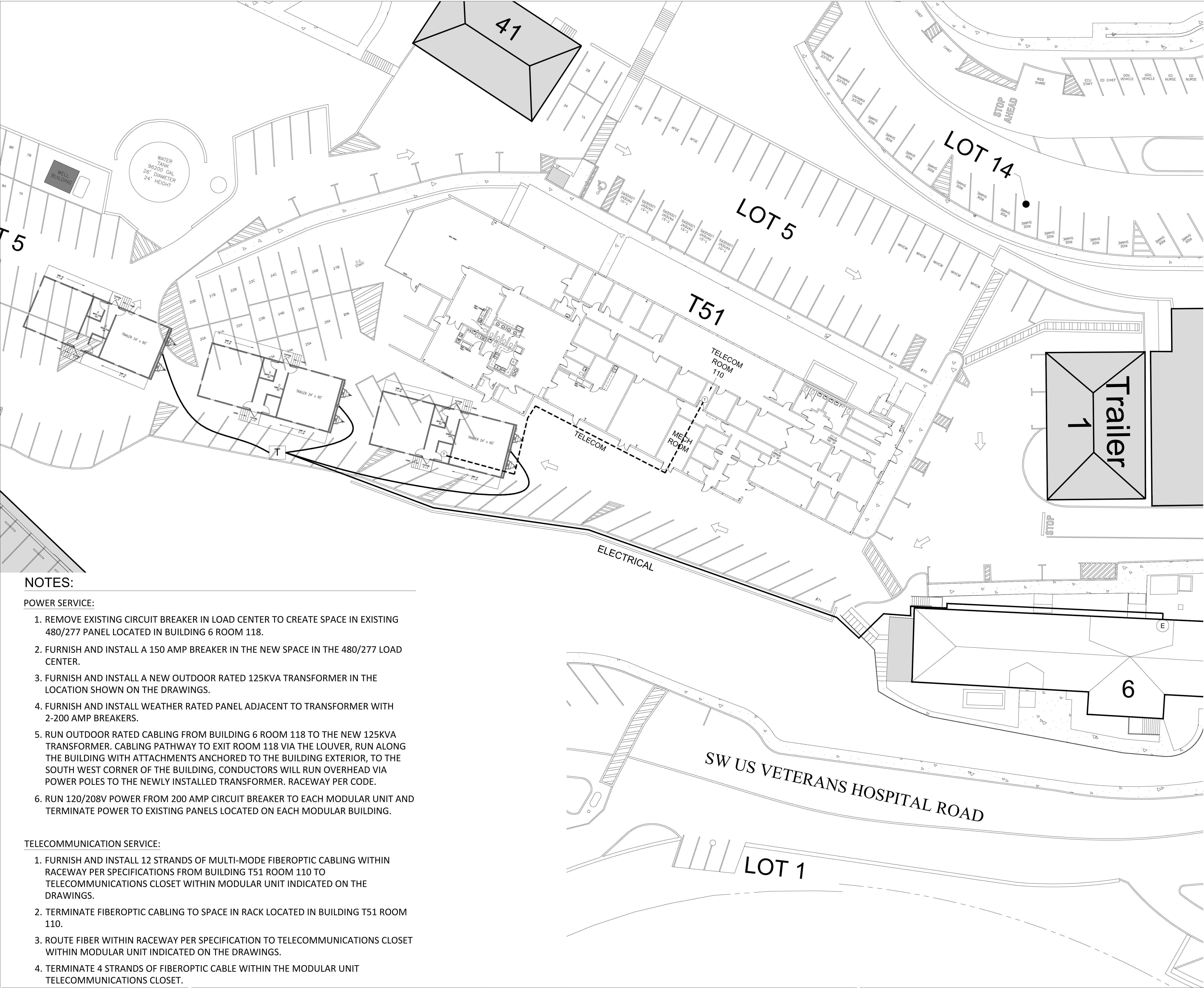
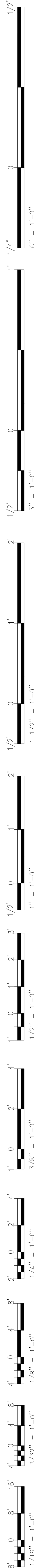
SCALE: NO SCALE

Date
12/2/20

Project No.
648-20-107

Drawing No.
A3.0

Dwg. 2 of 3



NOTES:

POWER SERVICE:

- 1. REMOVE EXISTING CIRCUIT BREAKER IN LOAD CENTER TO CREATE SPACE IN EXISTING 480/277 PANEL LOCATED IN BUILDING 6 ROOM 118.
- 2. FURNISH AND INSTALL A 150 AMP BREAKER IN THE NEW SPACE IN THE 480/277 LOAD CENTER.
- 3. FURNISH AND INSTALL A NEW OUTDOOR RATED 125KVA TRANSFORMER IN THE LOCATION SHOWN ON THE DRAWINGS.
- 4. FURNISH AND INSTALL WEATHER RATED PANEL ADJACENT TO TRANSFORMER WITH 2-200 AMP BREAKERS.
- 5. RUN OUTDOOR RATED CABLING FROM BUILDING 6 ROOM 118 TO THE NEW 125KVA TRANSFORMER. CABLING PATHWAY TO EXIT ROOM 118 VIA THE LOUVER, RUN ALONG THE BUILDING WITH ATTACHMENTS ANCHORED TO THE BUILDING EXTERIOR, TO THE SOUTH WEST CORNER OF THE BUILDING, CONDUCTORS WILL RUN OVERHEAD VIA POWER POLES TO THE NEWLY INSTALLED TRANSFORMER. RACEWAY PER CODE.
- 6. RUN 120/208V POWER FROM 200 AMP CIRCUIT BREAKER TO EACH MODULAR UNIT AND TERMINATE POWER TO EXISTING PANELS LOCATED ON EACH MODULAR BUILDING.

TELECOMMUNICATION SERVICE:

- 1. FURNISH AND INSTALL 12 STRANDS OF MULTI-MODE FIBEROPTIC CABLING WITHIN RACEWAY PER SPECIFICATIONS FROM BUILDING T51 ROOM 110 TO TELECOMMUNICATIONS CLOSET WITHIN MODULAR UNIT INDICATED ON THE DRAWINGS.
- 2. TERMINATE FIBEROPTIC CABLING TO SPACE IN RACK LOCATED IN BUILDING T51 ROOM 110.
- 3. ROUTE FIBER WITHIN RACEWAY PER SPECIFICATION TO TELECOMMUNICATIONS CLOSET WITHIN MODULAR UNIT INDICATED ON THE DRAWINGS.
- 4. TERMINATE 4 STRANDS OF FIBEROPTIC CABLE WITHIN THE MODULAR UNIT TELECOMMUNICATIONS CLOSET.

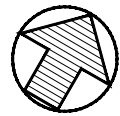
REVISIONS	DATE

VA Portland Health Care System
(VAPORHCS)

VA U.S. Department
of Veterans Affairs

Drawing Title PORTLAND SITE PLAN - ELECTRICAL & TELECOM AND TELECOM				
Approved: Proj Eng DODIER	Approved: Infect Cont	Approved: Chief P&O	Approved: Chief M&R	Approved: Safety Mgr.
Approved: Service Chief		Approved: Chief Facilities Mgmt		Approved: VAPORHCS Director

Project Title CERNER TRAILERS			Date 12/2/20	
Building No. SITE			Checked By/Proj.Mgr FMS	Drawn By NCK
Location PORTLAND CAMPUS			Project No. 648-20-107	
			Drawing No. A4.0	
			Dwg. 3 of 3	



SCALE: NO SCALE