

EROSION CONTROL NOTES

1. CONTRACTOR SHALL PERFORM ALL WORK IN ACCORDANCE WITH THE EROSION AND SEDIMENTATION POLLUTION CONTROL PLAN (ENS) PREPARED FOR THE PROJECT AS WELL AS BE RESPONSIBLE FOR THE STORM WATER POLLUTION PREVENTION PLAN(SWPPP) PERMIT.
2. EROSION CONTROL MEASURES SHOWN ON THE PLANS ARE TO BE CONSIDERED AS A BASELINE DESIGN. THE CONTRACTOR WILL BE REQUIRED TO OBTAIN A LARGE CONSTRUCTION PERMIT THROUGH WYOMING DEQ. AS PART OF THE PERMIT REQUIREMENTS, ADDITIONAL EROSION CONTROL MEASURES BEYOND WHAT IS SHOWN ON THIS PLAN MAY BE REQUIRED. THE CONTRACTOR WILL BE REQUIRED TO INSTALL ALL EROSION CONTROL MEASURES AS PART OF THE LARGE CONSTRUCTION PERMIT.
3. CONTRACTOR TO PROVIDE APPROPRIATE EROSION CONTROL MEASURES WITHIN AND DOWNSLOPE OF DISTURBED AREAS. CONTRACTOR TO ADJUST LIMIT OF DISTURBANCE AS NECESSARY TO COMPLETE DEMOLITION, INSTALL PROPOSED FEATURES, AND ACCOMMODATE VA REQUESTS.
4. PRIOR TO STARTING ANY WORK ON THE SITE, THE CONTRACTOR SHALL NOTIFY THE OWNER AND SHALL INSTALL EROSION CONTROL MEASURES, AS REQUIRED BY WYOMING DEQ.
5. THE CONTRACTOR SHALL INSPECT AND MAINTAIN EROSION CONTROL MEASURES DAILY, REMOVE SEDIMENT ON A WEEKLY BASIS AND WITHIN TWELVE HOURS AFTER EACH STORM EVENT, AND DISPOSE OF SEDIMENT IN AN UPLAND AREA SUCH THAT THEY DO NOT ENCUMBER OTHER DRAINAGE STRUCTURES AND PROTECTED AREAS.
6. THE CONTRACTOR SHALL BE FULLY RESPONSIBLE TO CONTROL CONSTRUCTION SUCH THAT SEDIMENTATION SHALL NOT AFFECT REGULATORY PROTECTED AREAS. WHETHER SUCH SEDIMENTATION IS CAUSED BY WATER, WIND, OR DIRECT DEPOSIT.
7. THE CONTRACTOR SHALL PERFORM CONSTRUCTION SEQUENCING SUCH THAT EARTH MATERIALS ARE EXPOSED FOR A MINIMUM TIME BEFORE THEY ARE COVERED, SEEDED, OR OTHERWISE STABILIZED TO PREVENT EROSION.
8. THE CONTRACTOR SHALL INSTALL PROTECTIVE MEASURES TO PREVENT DEBRIS AND/OR SEDIMENT FROM ENTERING DRAINAGE CATCH BASINS AND PIPES. UPON COMPLETION OF CONSTRUCTION AND ESTABLISHMENT OR PERMANENT GROUND COVER, THE CONTRACTOR SHALL REMOVE AND DISPOSE OF EROSION CONTROL MEASURES AND REMOVE ANY DEBRIS AND/OR SEDIMENT FROM ALL DRAINAGE INFRASTRUCTURE.
9. IT SHALL BE THE CONTRACTORS RESPONSIBILITY TO CONTROL DUST AND TAKE ALL NECESSARY MEASURES TO ENSURE ALL ROADS ARE MAINTAINED IN A DUST FREE CONDITION AT ALL TIMES THROUGHOUT THE DURATION OF THE PROJECT. REPETITIVE TREATMENTS SHOULD BE APPLIED AS NECESSARY.
10. PERMANENT VEGETATIVE COVER SHALL BE INSTALLED TO ALL DISTURBED AREAS THAT HAVE REACHED FINISHED GRADE AS SOON AS POSSIBLE, BUT NOT MORE THAN FOURTEEN (14) DAYS AFTER THE CONSTRUCTION ACTIVITY IN ANY GIVEN AREA HAS PERMANENTLY CEASED. SEEDING DATES: NOT RECOMMENDED BETWEEN MAY 15TH & OCTOBER 10TH.
11. TEMPORARY VEGETATIVE COVER SHALL BE APPLIED TO ANY DISTURBED AREAS (INCLUDING SOIL STOCKPILE AREAS) THAT HAVE NOT YET REACHED FINISHED GRADE AS SOON AS POSSIBLE, BUT NOT MORE THAN FOURTEEN (14) DAYS AFTER THE CONSTRUCTION ACTIVITY IN THAT AREA HAS TEMPORARILY CEASED, UNLESS THE ACTIVITY IS TO RESUME WITHIN TWENTY-ONE (21) DAYS. SEEDING DATES: NOT RECOMMENDED BETWEEN MAY 15TH & OCTOBER 10TH.

12. AREAS WHICH HAVE BEEN TEMPORARILY OR PERMANENTLY SEEDED SHOULD BE MULCHED IMMEDIATELY FOLLOWING SEEDING IN ADDITION TO AREAS WHICH CANNOT BE SEEDED WITHIN THE RECOMMENDED SEEDING DATES AND ANY SOIL STOCKPILE AREAS. TEMPORARY MULCHING SHOULD BE PERFORMED AS SOON AS POSSIBLE, BUT NOT MORE THAN FOURTEEN (14) DAYS AFTER THE CONSTRUCTION ACTIVITY IN THAT AREA HAS TEMPORARILY CEASED UNLESS THE ACTIVITY IS TO RESUME WITHIN TWENTY-ONE (21) DAYS. VEGETATIVE MULCH MATERIAL SHALL BE CLEAN WHEAT STRAW, RYE STRAW, BARLEY STRAW, OR OAT STRAW, IN THAT ORDER OF PREFERENCE. CHOPPED GROUND MATERIAL THAT IS MUSTY, MOLDY, ROTTED, OR CONTAINS SEED-BEARING STALKS OF NOXIOUS WEEDS OR GRASSES IS NOT ACCEPTABLE. THE MULCH SHALL BE FREE OF STONES, DIRT, ROOTS, STUMPS, OR OTHER FOREIGN MATERIAL. MULCH SHALL BE APPLIED AT A RATE OF TWO TONS PER ACRE. MULCH SHALL BE CERTIFIED WEED FREE PURSUANT TO W.S. 11-5-102(a)(viii)(x)(xi); W.S. 11-5-302(a)(viii); OR REGULATIONS, OR FEDERAL LAW (P.L. 93-629). THE CROP SHALL BE INSPECTED AND CERTIFIED BY PROPER, AUTHORIZED OFFICIALS IN THE STATE OF ORIGIN.
13. ALL MULCHES MUST BE INSPECTED PERIODICALLY, IN PARTICULAR AFTER RAIN EVENTS, TO CHECK FOR EROSION. WHERE EROSION IS OBSERVED, ADDITIONAL MULCH MUST BE APPLIED. IF NETTING IS USED, THE NET SHOULD BE INSPECTED AFTER RAIN EVENTS FOR DISLOCATION OR FAILURE. IF WASHOUTS OR BREAKAGE OCCUR, THE NET MUST BE REINSTALLED AS NECESSARY AFTER REPAIRING DAMAGE TO SLOPE. INSPECTIONS SHOULD TAKE PLACE UNTIL VEGETATIVE COVER IS FIRMLY ESTABLISHED. VEGETATION IS CONSIDERED TO BE FIRMLY ESTABLISHED AT A MINIMUM HEIGHT OF THREE (3) INCHES. ANY EXISTING OR PROPOSED CATCH BASINS THAT MAY BE SUBJECT TO SEDIMENTATION PROCESSES SHALL HAVE SILT SACKS INSTALLED TO PREVENT SEDIMENT FROM ENTERING THE PROPOSED STORM DRAINAGE SYSTEM PRIOR TO PERMANENT STABILIZATION OF THE DISTURBED SITE. THE PROPER INLET PROTECTION DEVICES SHALL BE INSTALLED WHERE STORMWATER CATCH BASINS ARE TO BE MADE OPERATIONAL BEFORE PERMANENT STABILIZATION OF ANY DISTURBED DRAINAGE AREA.
14. THE CONTRACTOR SHALL RESTORE DISTURBED AREAS AS CLOSELY AS POSSIBLE. AREAS DAMAGED DURING CONSTRUCTION SHALL BE RESEDED, RESEED, OR OTHERWISE RESTORED TO THEIR ORIGINAL STATE. TREES AND OTHER EXISTING VEGETATION SHALL BE RETAINED WHEREVER FEASIBLE.
15. THE CONTRACTOR SHALL PREVENT DUST, SEDIMENT AND DEBRIS FROM EXISTING THE SITE AND SHALL BE RESPONSIBLE FOR CLEANUP, REPAIRS AND CORRECTIVE ACTION IF NECESSARY.
16. ALL EXISTING AND PROPOSED CATCH BASINS SHALL RECEIVE INLET PROTECTION. AN APPROPRIATE INLET PROTECTION OPTION SHALL BE SELECTED BASED ON LOCATION AND TRIBUTARY AREA.
17. PERIMETER CONTROL SHALL BE INSTALLED DOWNSLOPE OF ALL DISTURBANCE. AN APPROPRIATE OPTION FOR PERIMETER CONTROL SHALL BE SELECTED BASED ON LOCATION AND UPSLOPE DISTURBANCE. COMPOST FILTER SOCK AND SILT FENCE ARE VIABLE OPTIONS FOR PERIMETER CONTROL.
18. ALL DISTURBED SLOPES OF 3:1 OR STEEPER SHALL RECEIVE EROSION CONTROL MATTING AND BE IMMEDIATELY STABILIZED.


EROSION & SEDIMENT CONTROL MEASURES LEGEND

APPROXIMATE LIMIT OF DISTURBANCE



CALL 811 OR 1-800-849-2476  
SITE SERIAL: 2019290075

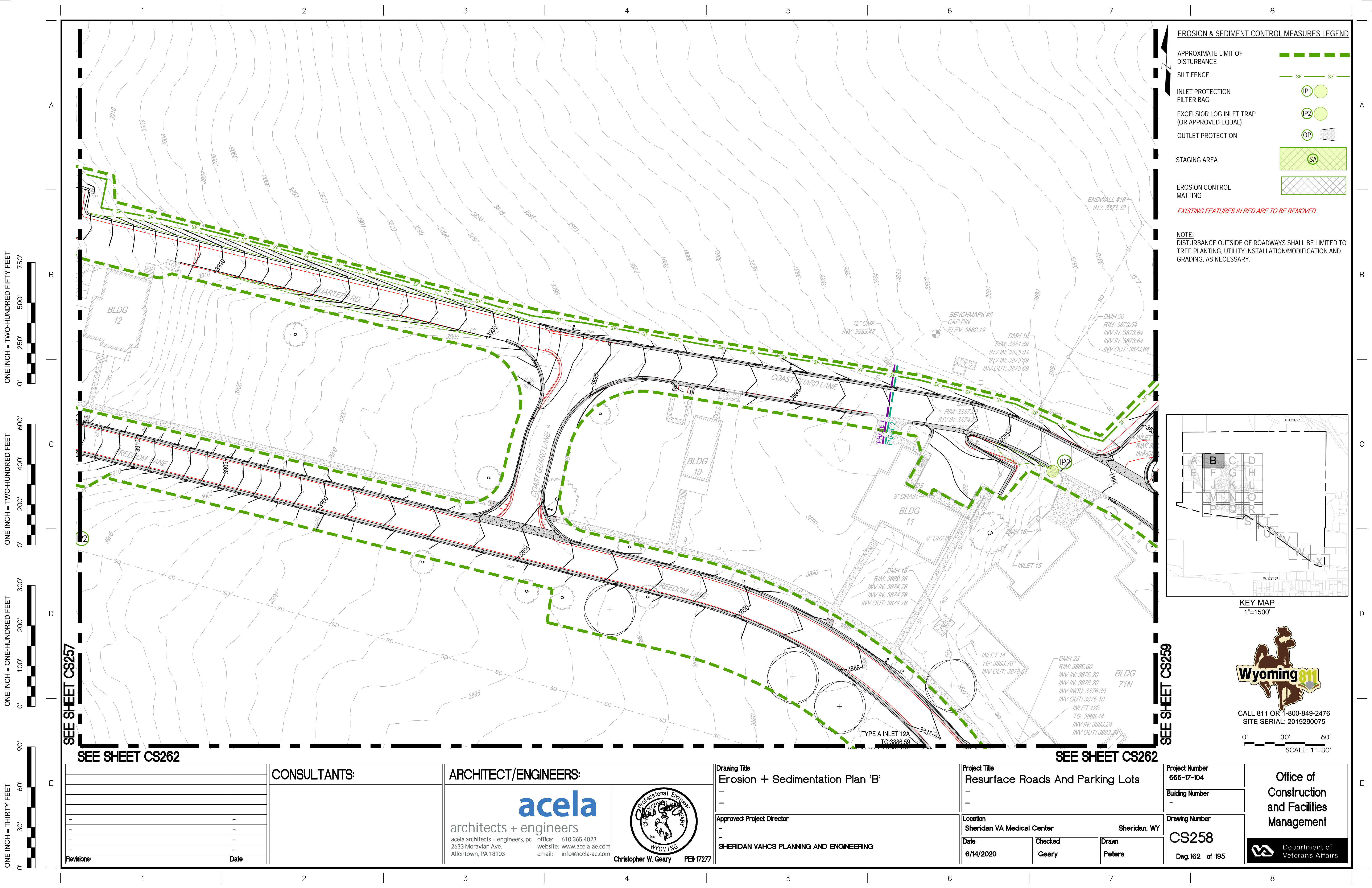
0' 250' 500'  
SCALE: 1"=250'

		CONSULTANTS:	ARCHITECT/ENGINEERS:		Drawing Title Overall Erosion + Sedimentation Plan - -	Project Title Resurface Roads And Parking Lots - -		Project Number 666-17-104		Office of Construction and Facilities Management
								Building Number -		
-	-		<div>acela architects + engineers</div> <div>acela architects + engineers, pc    office: 610.365.4023 2633 Moravian Ave.    website: www.acela-ae.com Allentown, PA 18103    email: info@acela-ae.com</div>	<div></div> <div>Christopher W. Geary    PE# 17277</div>	Approved: Project Director - - SHERIDAN VAHCS PLANNING AND ENGINEERING		Location Sheridan VA Medical Center			









**EROSION & SEDIMENT CONTROL MEASURES LEGEND**

APPROXIMATE LIMIT OF DISTURBANCE

SILT FENCE

INLET PROTECTION FILTER BAG

EXCELSIOR LOG INLET TRAP (OR APPROVED EQUAL)

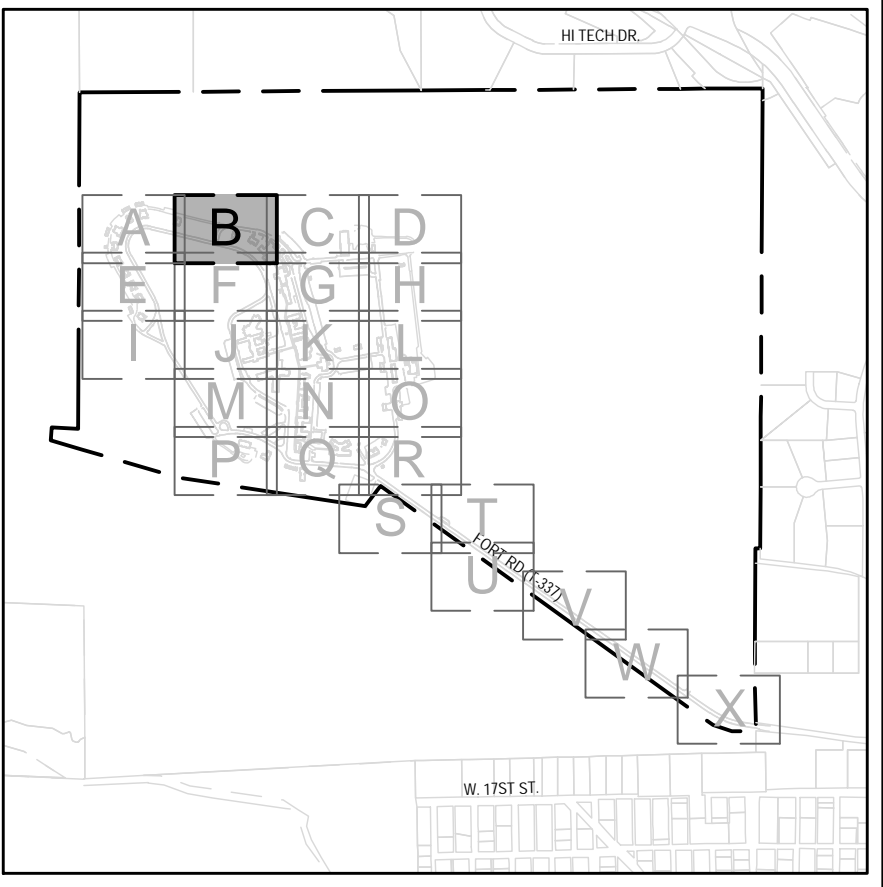
OUTLET PROTECTION

STAGING AREA

EROSION CONTROL MATTING

EXISTING FEATURES IN RED ARE TO BE REMOVED

NOTE:  
DISTURBANCE OUTSIDE OF ROADWAYS SHALL BE LIMITED TO TREE PLANTING, UTILITY INSTALLATION/MODIFICATION AND GRADING, AS NECESSARY.



KEY MAP  
1"=1500'



CALL 811 OR 1-800-849-2476  
SITE SERIAL: 2019290075

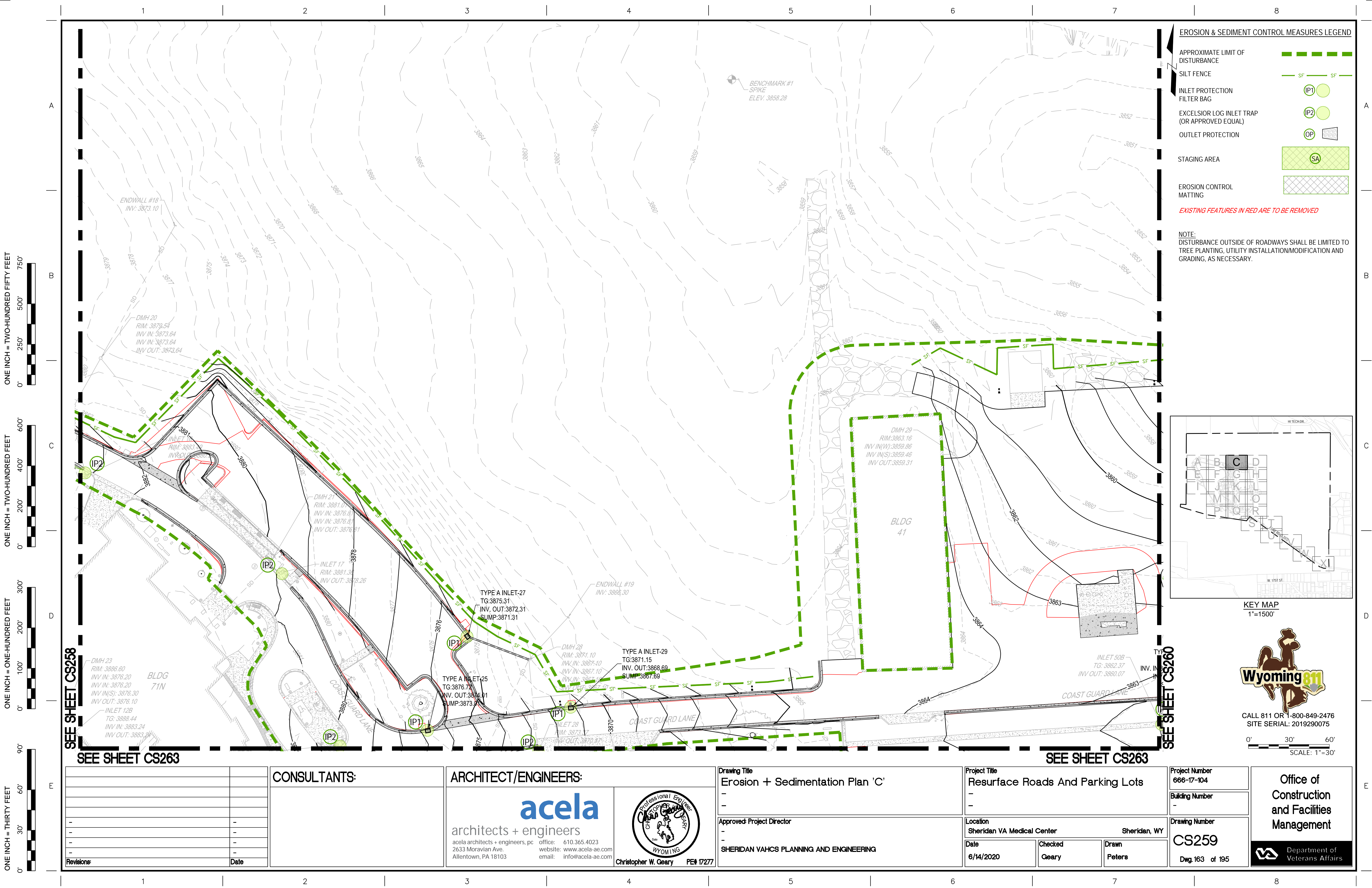


SEE SHEET CS262

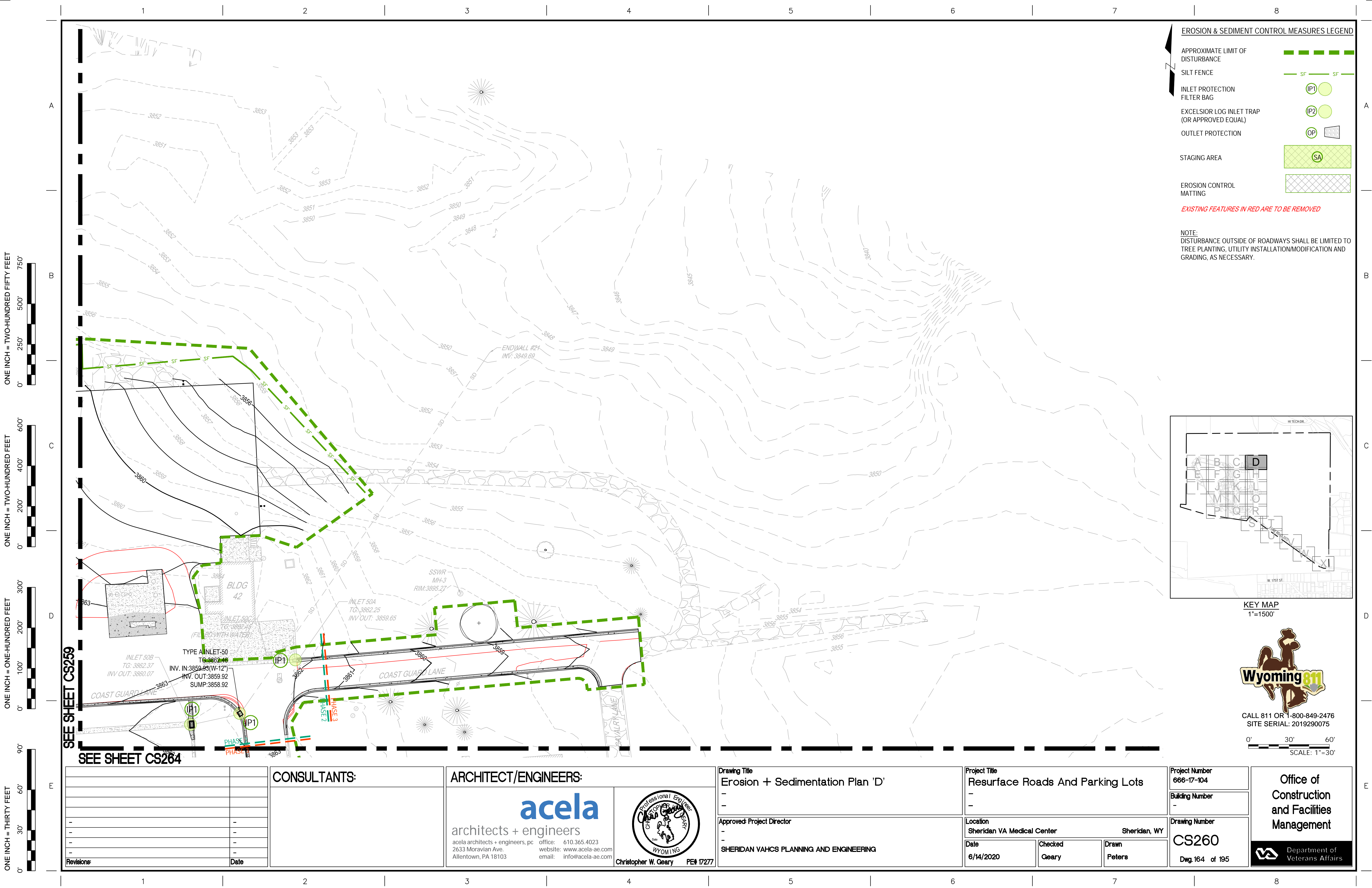
SEE SHEET CS262

		CONSULTANTS:	ARCHITECT/ENGINEERS:	Drawing Title		Project Title		Project Number		Office of Construction and Facilities Management
				Erosion + Sedimentation Plan 'B'		Resurface Roads And Parking Lots		666-17-104		
				-		-		Building Number		
				-		-		-		
-	-			Approved: Project Director		Location		Drawing Number		
-	-			-		Sheridan VA Medical Center		CS258		
-	-			-		Sheridan, WY		Dwg. 162 of 195		
-	-			SHERIDAN VAHCS PLANNING AND ENGINEERING		Date	Checked	Drawn		
-	-					6/14/2020	Geary	Peters		
Revisions:	Date									





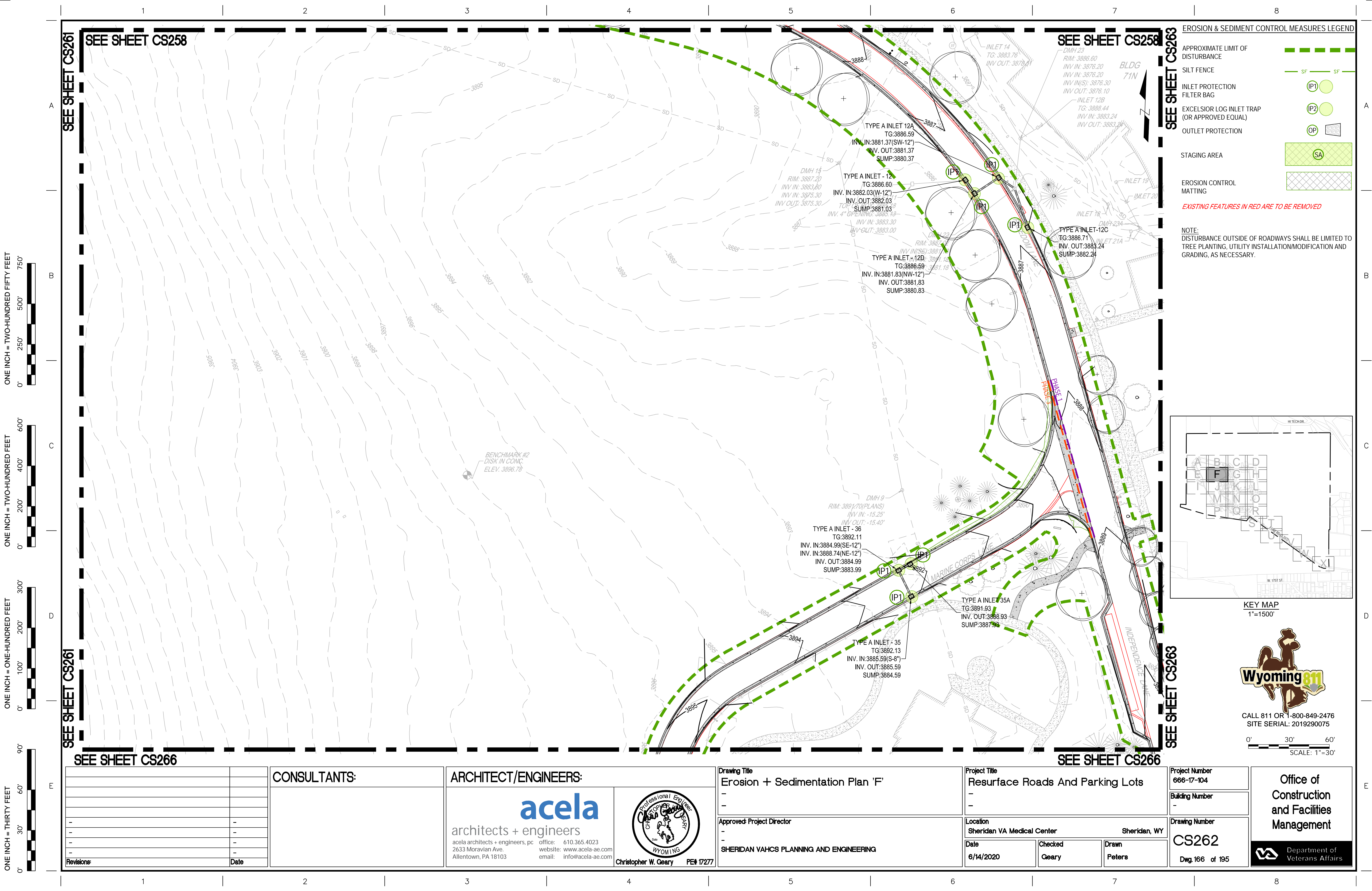




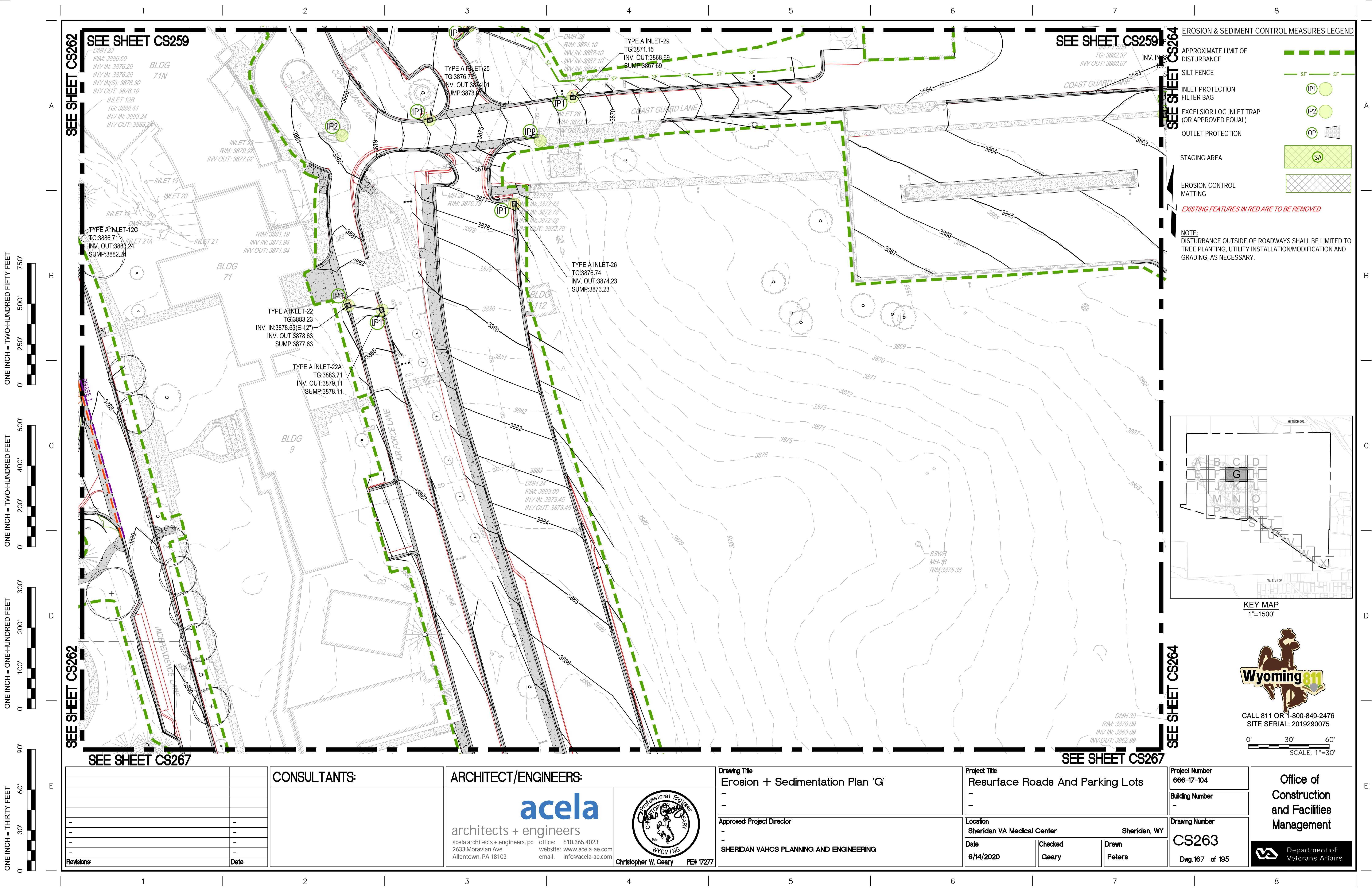




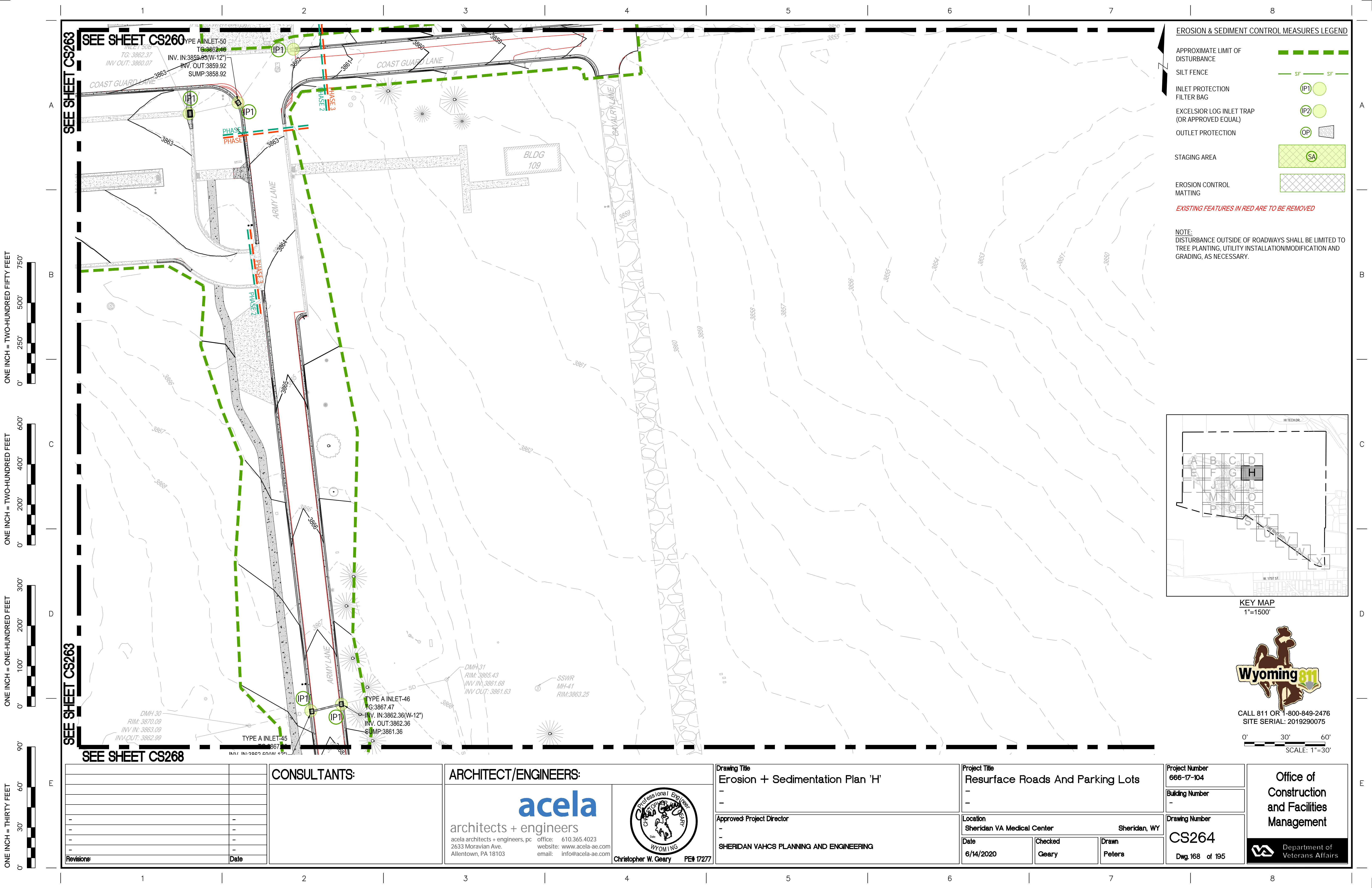












**EROSION & SEDIMENT CONTROL MEASURES LEGEND**

APPROXIMATE LIMIT OF DISTURBANCE

SILT FENCE

INLET PROTECTION FILTER BAG

EXCELSIOR LOG INLET TRAP (OR APPROVED EQUAL)

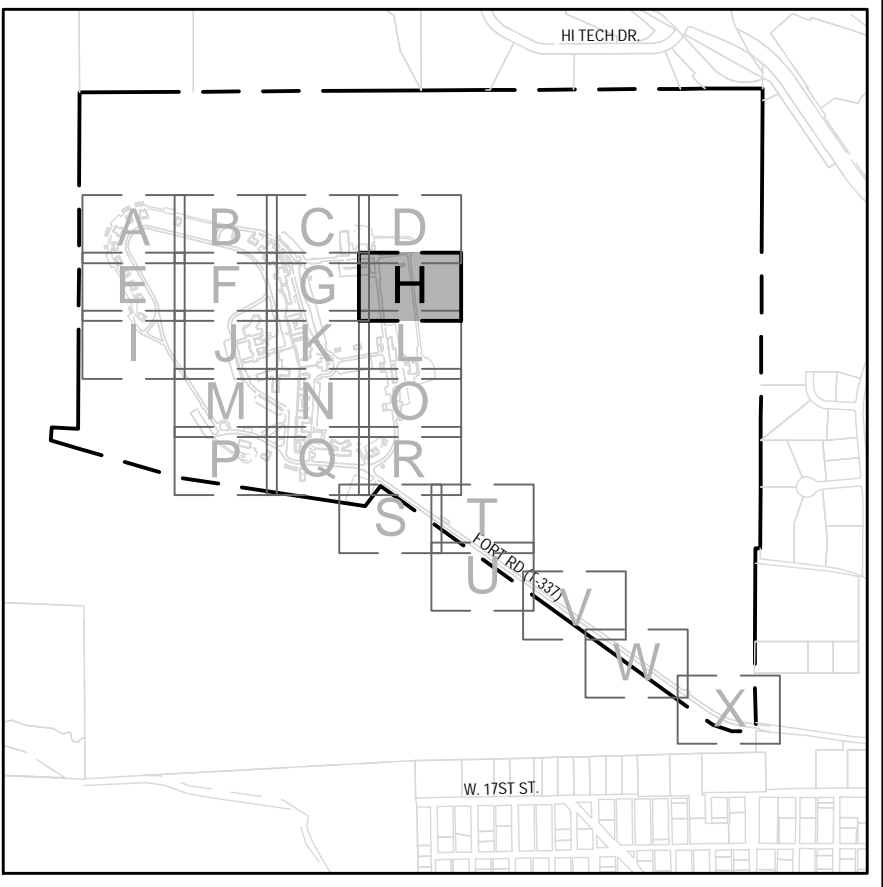
OUTLET PROTECTION

STAGING AREA

EROSION CONTROL MATTING

EXISTING FEATURES IN RED ARE TO BE REMOVED

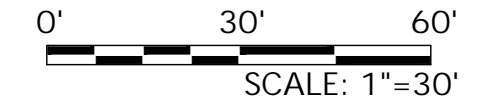
NOTE:  
DISTURBANCE OUTSIDE OF ROADWAYS SHALL BE LIMITED TO TREE PLANTING, UTILITY INSTALLATION/MODIFICATION AND GRADING, AS NECESSARY.



KEY MAP  
1"=1500'

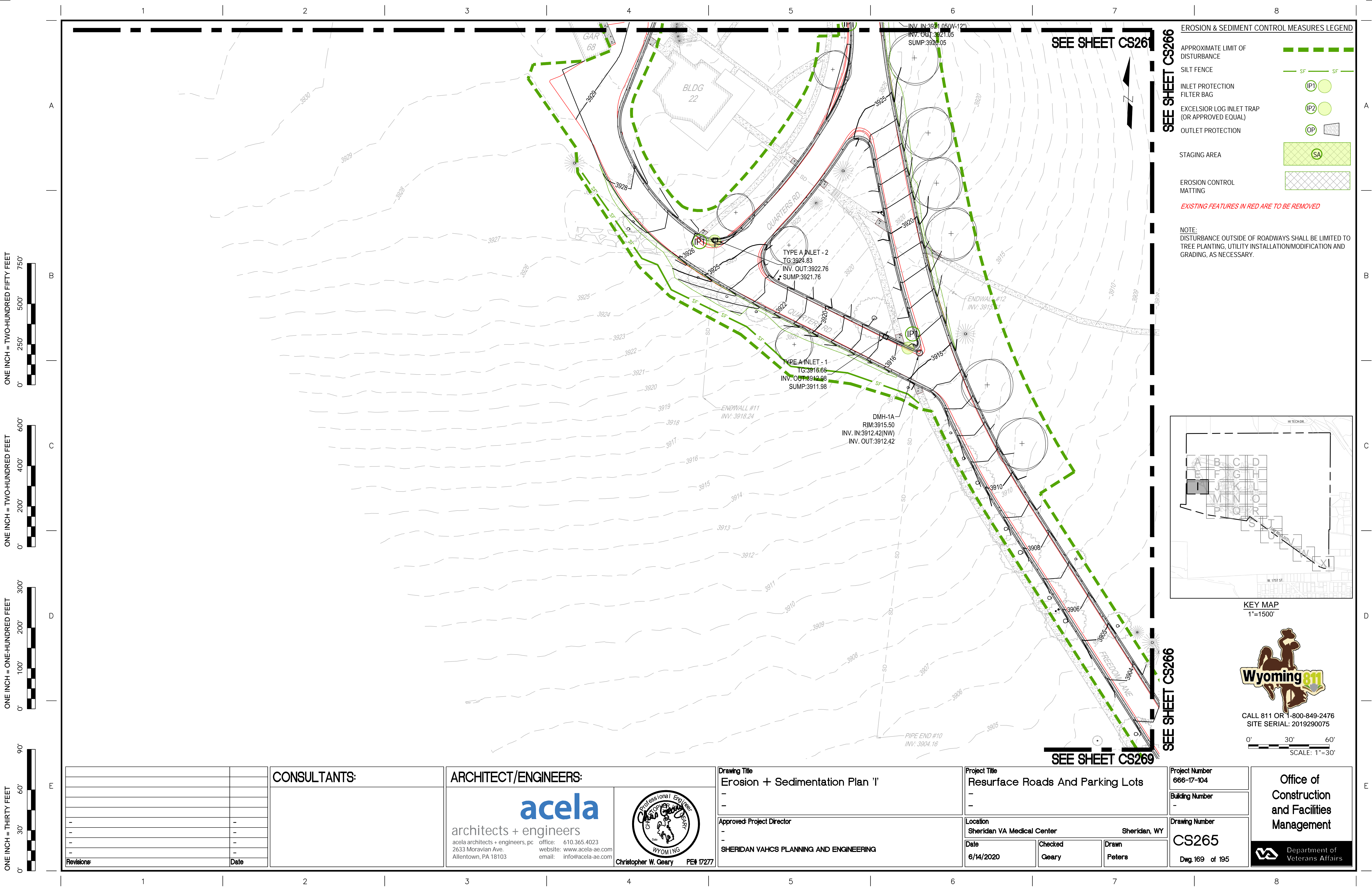


CALL 811 OR 1-800-849-2476  
SITE SERIAL: 2019290075

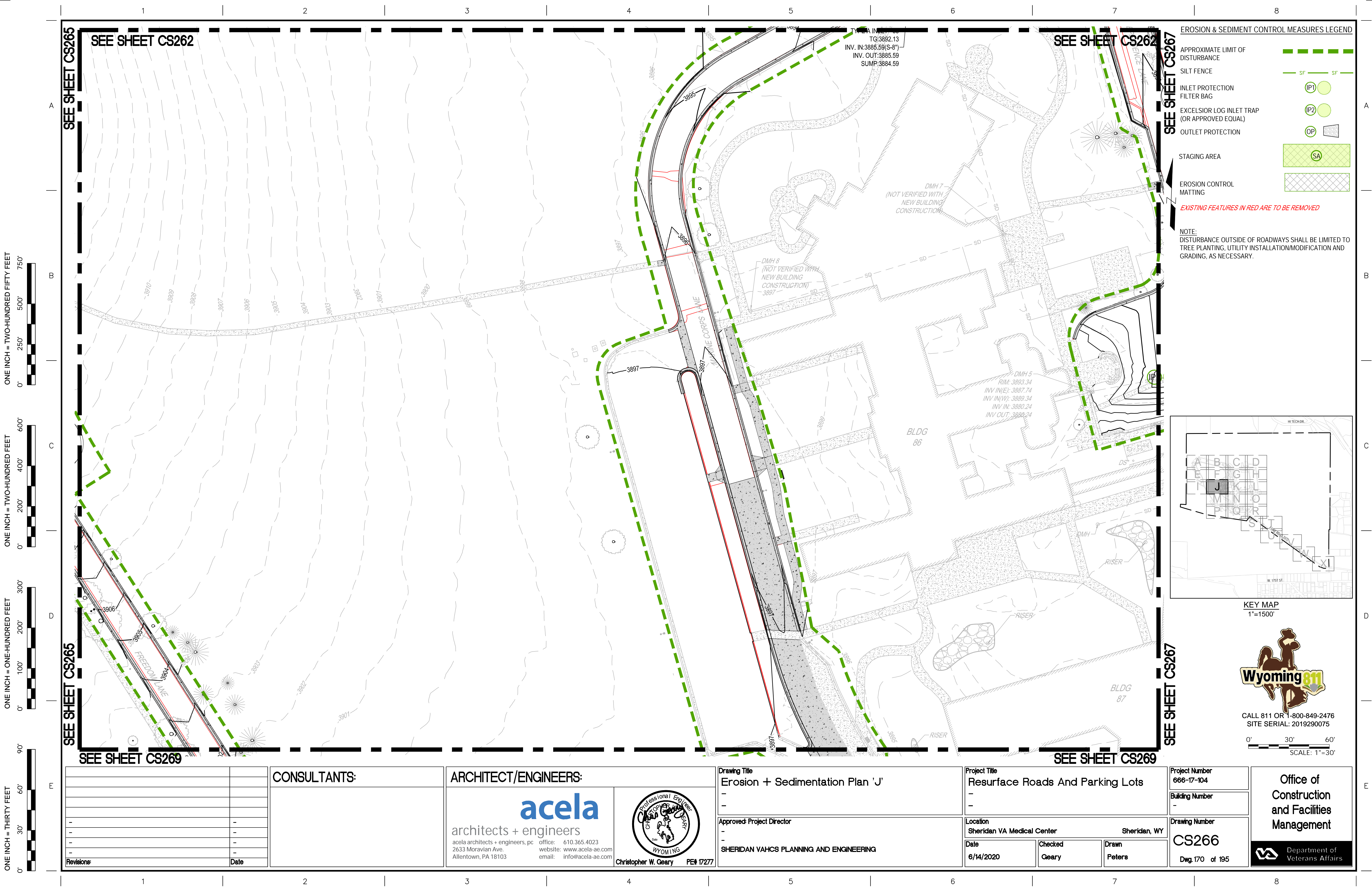


<div>SEE SHEET CS260</div> <div>SEE SHEET CS263</div> <div>SEE SHEET CS268</div>		<div>CONSULTANTS:</div> <div></div>		<div>ARCHITECT/ENGINEERS:</div> <div><div>acela</div><div>architects + engineers</div><div>acela architects + engineers, pc 2633 Moravian Ave. Allentown, PA 18103</div><div>office: 610.365.4023 website: www.acela-ae.com email: info@acela-ae.com</div></div> <div><div>Professional Engineer</div><div>Christopher W. Geary</div><div>PE# 17277</div></div>		<div>Drawing Title</div> <div>Erosion + Sedimentation Plan 'H'</div> <div>Approved Project Director</div> <div>SHERIDAN VAHCS PLANNING AND ENGINEERING</div>		<div>Project Title</div> <div>Resurface Roads And Parking Lots</div> <div>Location</div> <div>Sheridan VA Medical Center Sheridan, WY</div> <div>Date</div> <div>6/14/2020</div> <div>Checked</div> <div>Geary</div> <div>Drawn</div> <div>Peters</div>		<div>Project Number</div> <div>666-17-104</div> <div>Building Number</div> <div>-</div> <div>Drawing Number</div> <div>CS264</div> <div>Dwg. 168 of 195</div>	<div>Office of Construction and Facilities Management</div> <div>Department of Veterans Affairs</div>	
--	--	-------------------------------------	--	---	--	--	--	---	--	---	---	--

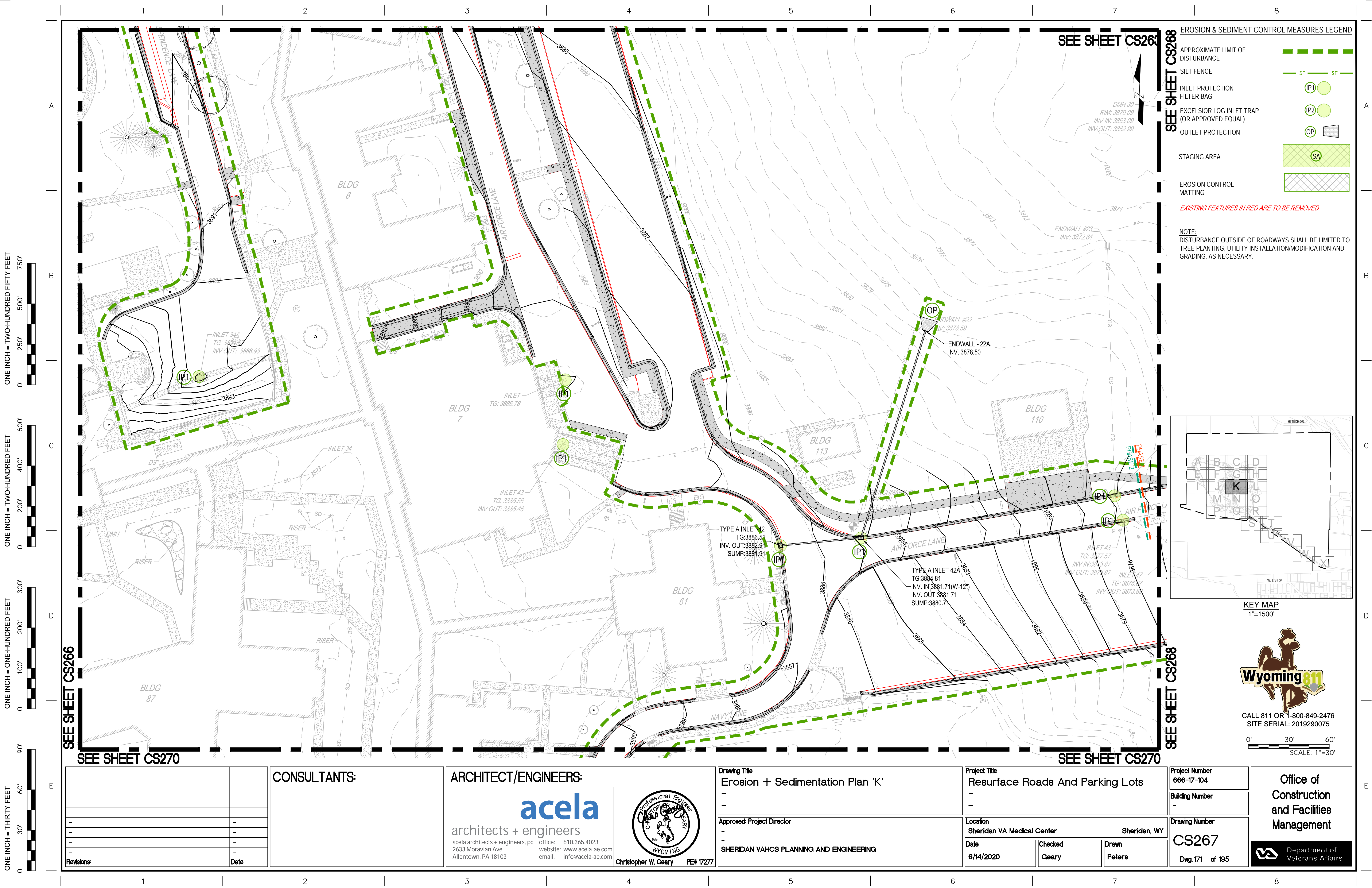














SEE SHEET CS267

SEE SHEET CS264

SEE SHEET CS267

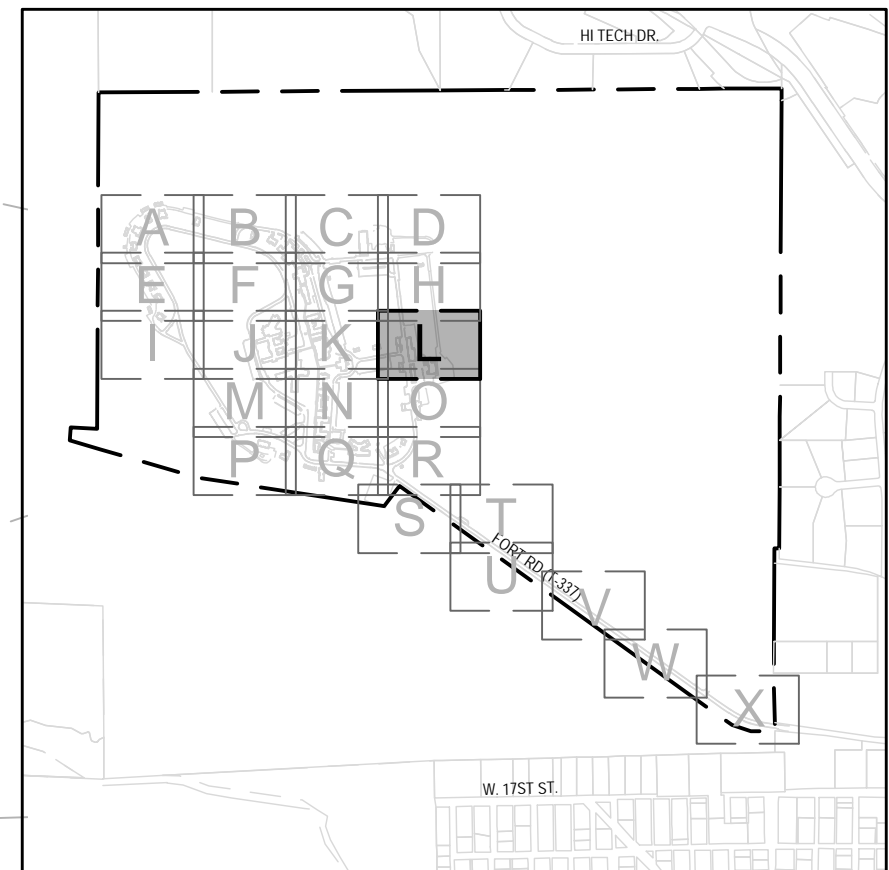
SEE SHEET CS271

EROSION & SEDIMENT CONTROL MEASURES LEGEND

- APPROXIMATE LIMIT OF DISTURBANCE
- SILT FENCE
- INLET PROTECTION FILTER BAG
- EXCELSIOR LOG INLET TRAP (OR APPROVED EQUAL)
- OUTLET PROTECTION
- STAGING AREA
- EROSION CONTROL MATTING

EXISTING FEATURES IN RED ARE TO BE REMOVED

NOTE:  
DISTURBANCE OUTSIDE OF ROADWAYS SHALL BE LIMITED TO TREE PLANTING, UTILITY INSTALLATION/MODIFICATION AND GRADING, AS NECESSARY.



KEY MAP  
1"=1500'



CALL 811 OR 1-800-849-2476  
SITE SERIAL: 2019290075

0' 30' 60'  
SCALE: 1"=30'

CONSULTANTS:

ARCHITECT/ENGINEERS:

**acela**  
architects + engineers

acela architects + engineers, pc  
2633 Moravian Ave.  
Allentown, PA 18103



Christopher W. Geary PE# 17277

Drawing Title  
Erosion + Sedimentation Plan 'L'

Approved Project Director  
SHERIDAN VAHCS PLANNING AND ENGINEERING

Project Title  
Resurface Roads And Parking Lots

Location  
Sheridan VA Medical Center  
Sheridan, WY

Date  
6/14/2020

Checked  
Geary

Drawn  
Peters

Project Number  
666-17-104

Building Number  
-

Drawing Number  
CS268

Dwg. 172 of 195

Office of  
Construction  
and Facilities  
Management





