

LBNF-342297-BWQ Addendum 1 Attachment 1

# Mandatory Pre-Proposal Conference NSCFB Wetland Permit Work

Project Team

RFP No. LBNF-342297-BWQ

04 May 2023



U.S. DEPARTMENT OF  
**ENERGY**

Office of  
Science

# Outline

- Welcome
- LBNF/DUNE-US Project Overview
- ES&H
- QA
- Wetland Permit Work Overview
- Procurement
- Site Inspection Tour Details
- Questions

# Project Team

## Project Team Introductions

- Brian Quinn                      Procurement Specialist
- Craig Schmitz                    LBNF Procurement Manager
- Tom Hamernik                   NSCF Project Manager
- Kennedy Hartsfield            NSCF Project Engineer
- John Szott                        NSCF Construction Manager
- Mike Andrews                   LBNF/DUNE ESH Manager
- Kevin Fahey                      LBNF/DUNE QA Manager

# Welcome

# Welcome

- Meeting purpose
  - Gain understanding of the project
  - Review contents of the RFP
- Oral explanations or instructions given before the award of a contract will not be binding. Any information given a prospective Offeror concerning a solicitation will be furnished promptly to all other prospective Offerors as an amendment to the solicitation, if that information is necessary in submitting proposals or if the lack of it would be prejudicial to other prospective Offerors.
- All questions shall be submitted in writing through the Procurement Specialist and will be answered via amendment to the RFP to all companies on the bidders list and posted on SAM.gov.
- Slides will be made available
  - In the event of a conflict between what's shown here and the RFP, the RFP governs.
  - RFP has all necessary information; slides mostly highlight what's in the RFP.

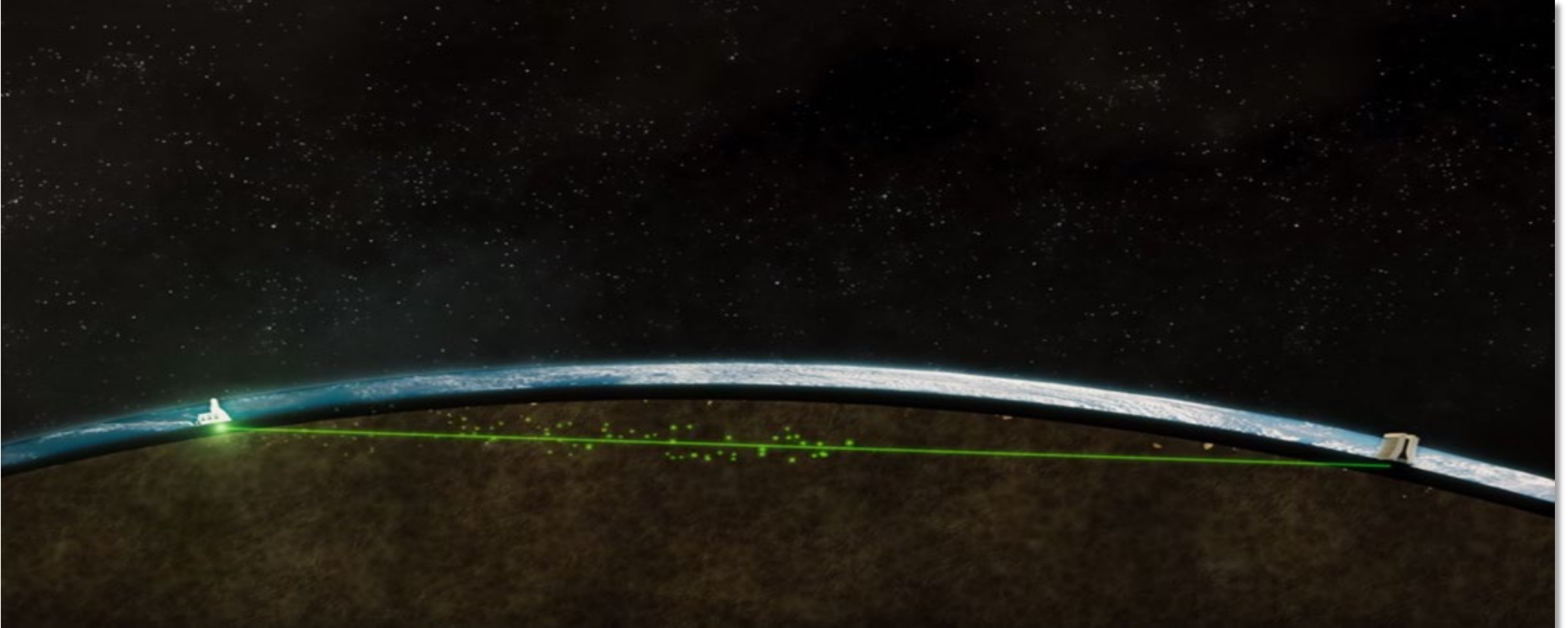
## Contact Information

- Procurement Specialist contact information:
  - Brian Quinn
  - Phone:(630) 840-5777
  - E-mail: [bquinn@fnal.gov](mailto:bquinn@fnal.gov)

# LBNF/DUNE-US Project Overview

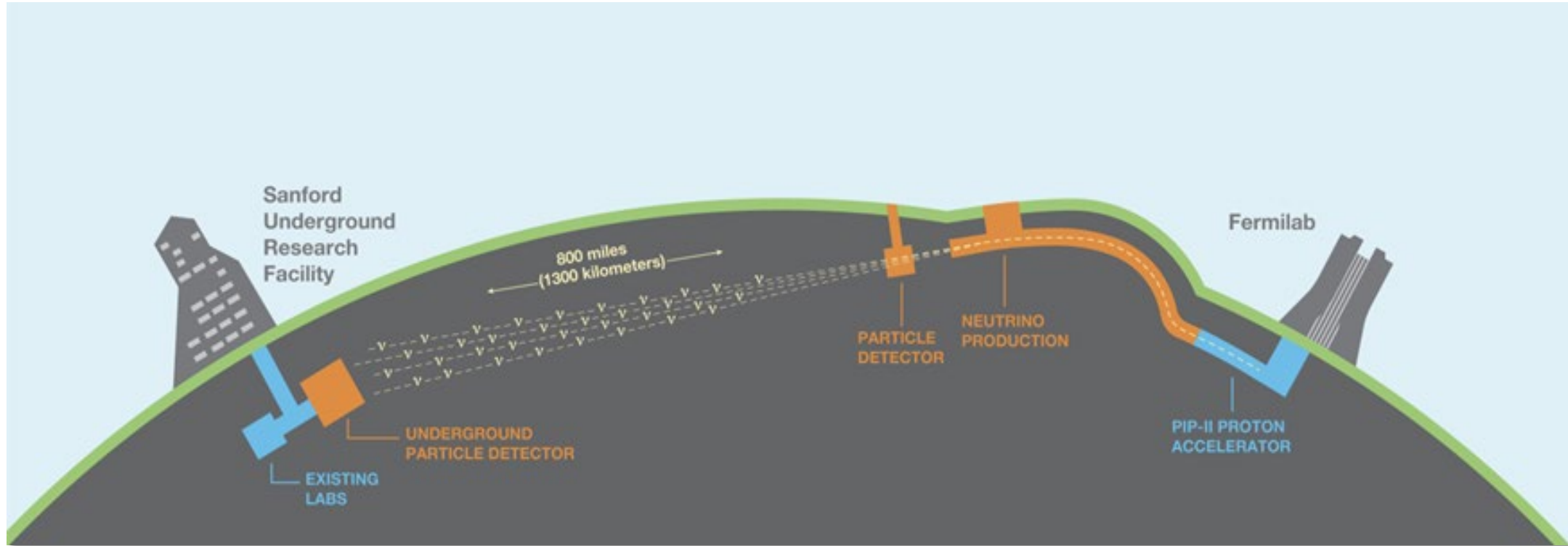


# Small Particles, Big Science: The International LBNF/DUNE Project

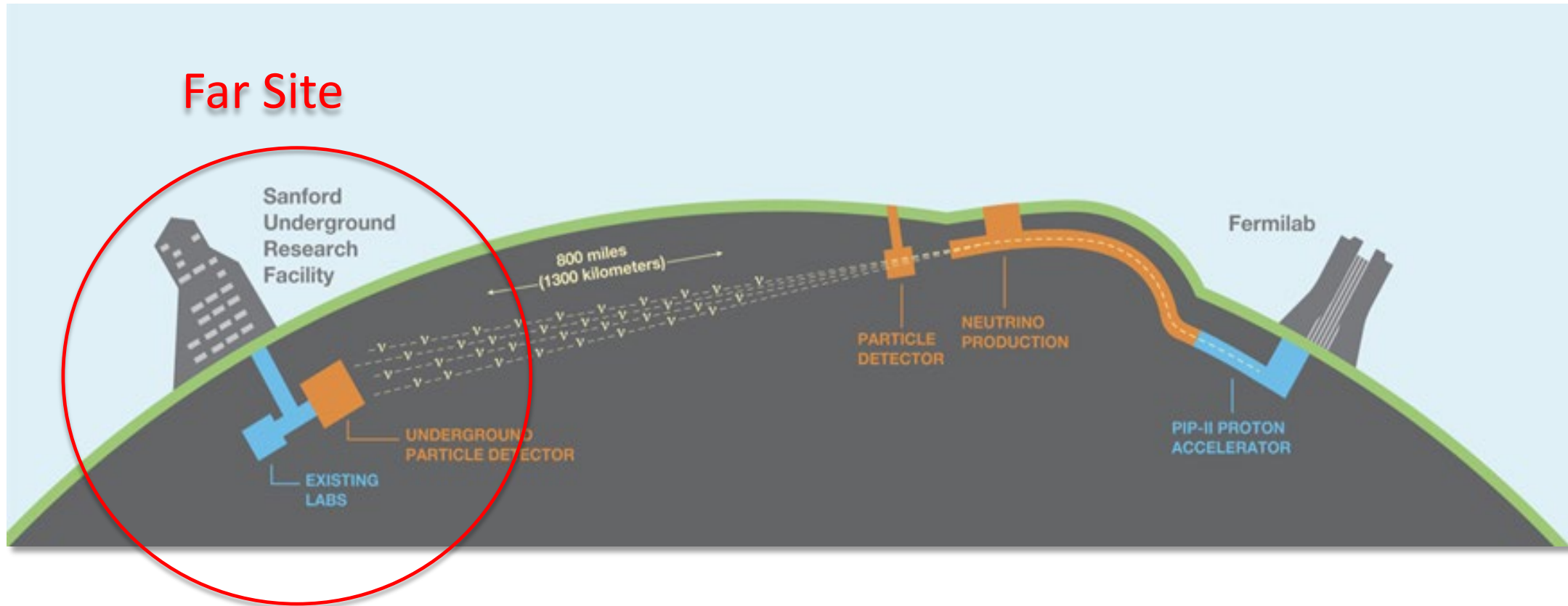


<https://lbnf-dune.fnal.gov/>

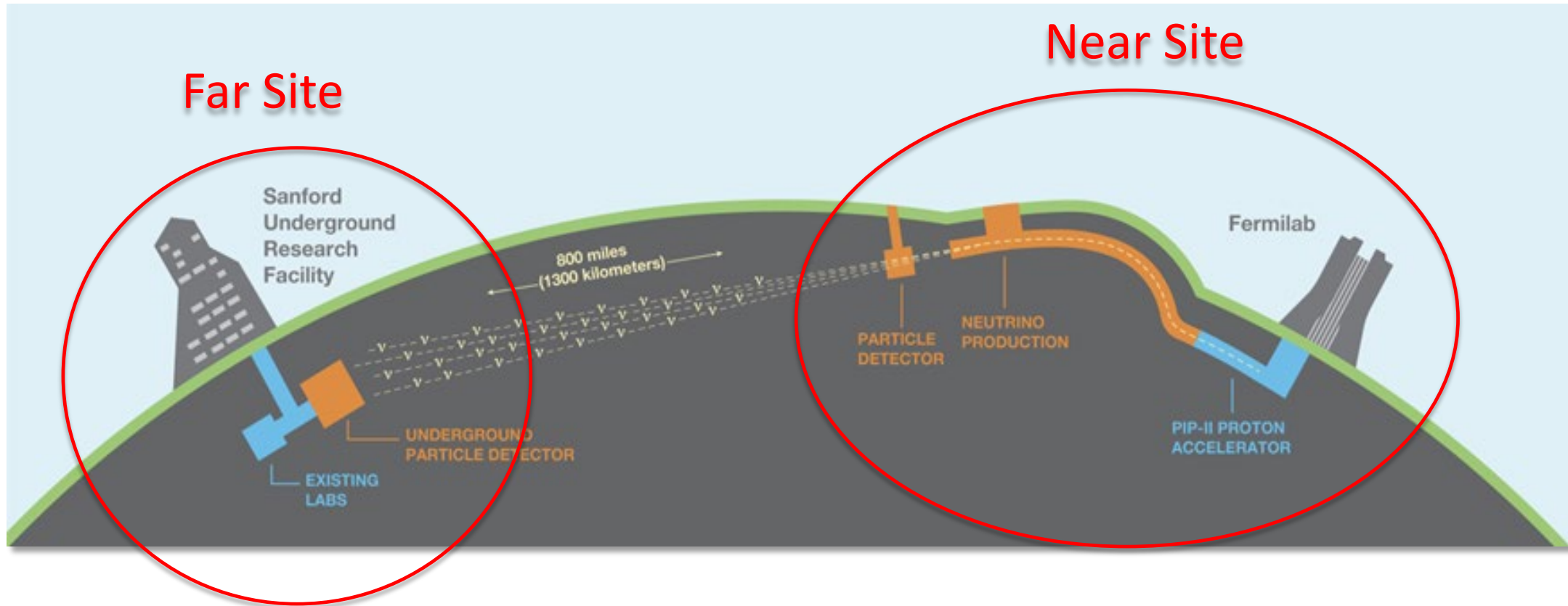
## Experiment and Facility Occupy Two Sites



## Experiment and Facility Occupy Two Sites

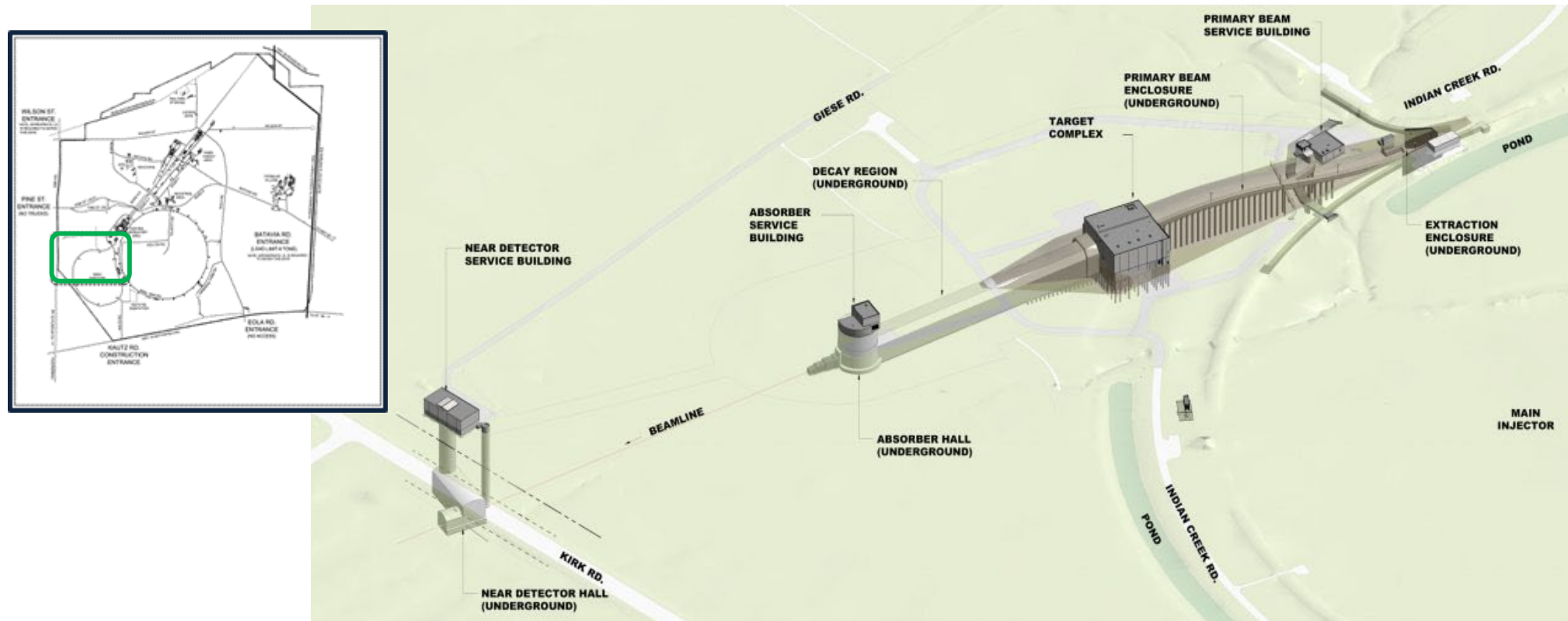


## Experiment and Facility Occupy Two Sites



## Near Site Conventional Facilities: House and Support the LBNF Beamline and DUNE Near Detector

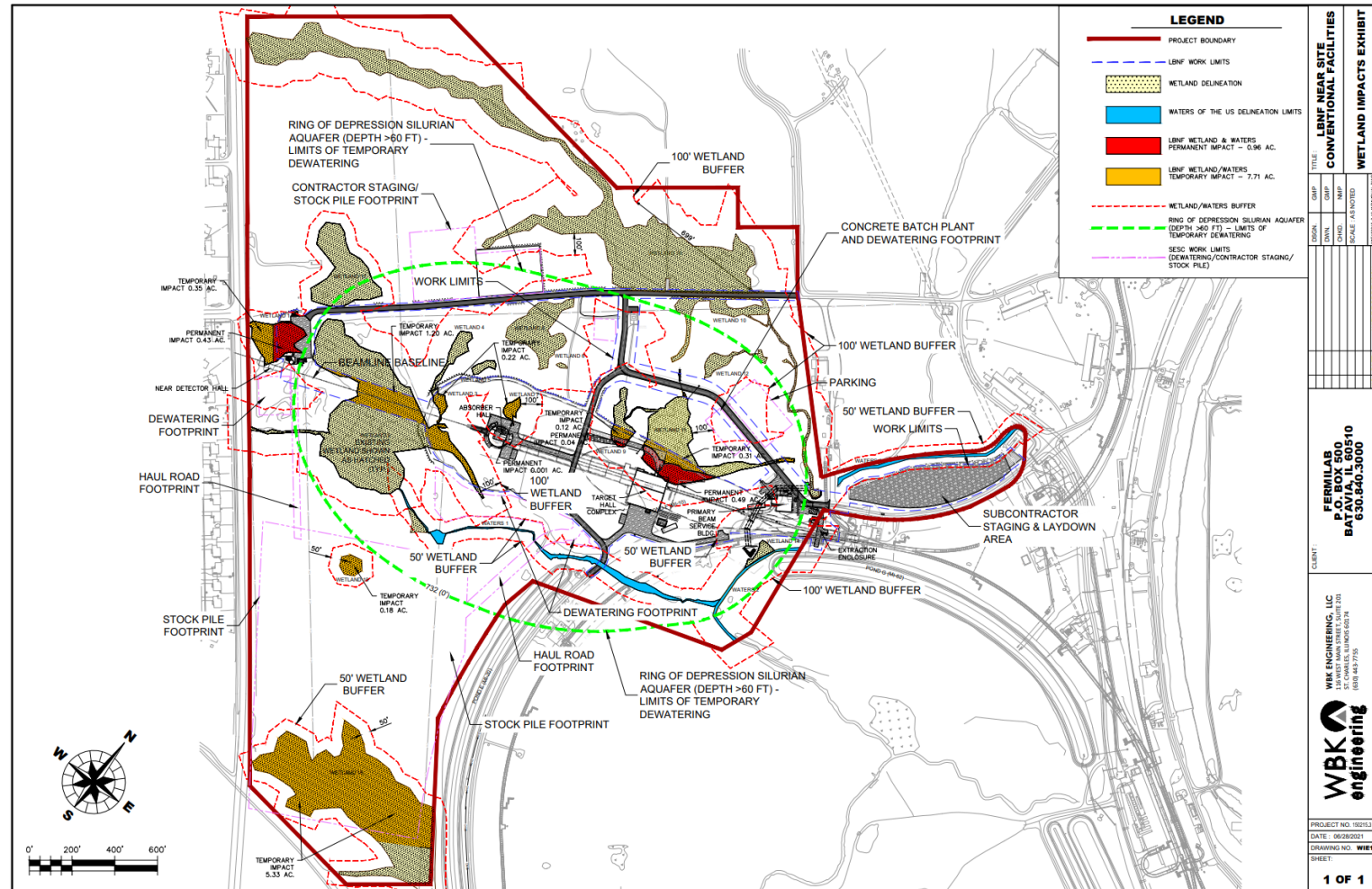
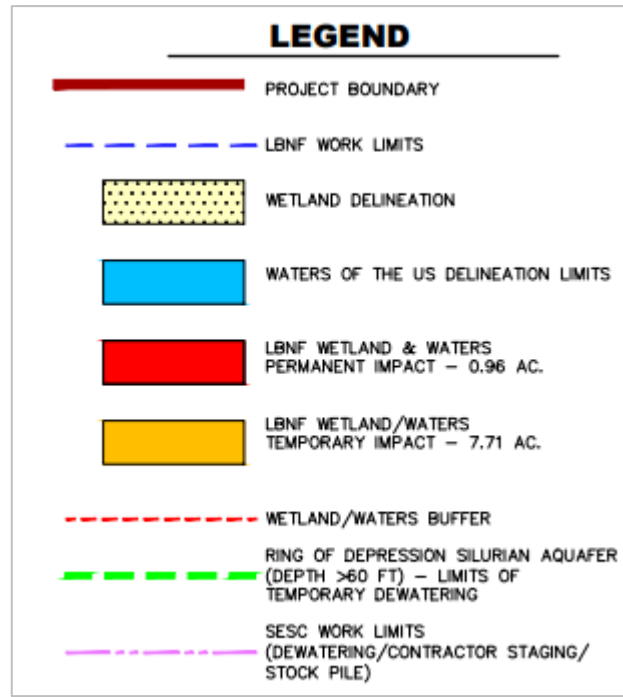
- Includes new service buildings, underground enclosures, utilities, roads, hardstands, and other facilities needed to house and support the operation of the LBNF Beamline and DUNE Near Detector





# CD-3a Scope of Work – Wetland Impacts

- Permanent Impacts – 0.96 acres
- Temporary Impacts 7.71 acres



## NSCF – Two Distinct Phases

- Site Preparation
  - Facility and Utility Relocation (Completed in 2020)
  - Wetland Permit Work
    - Perform Tree Removal
    - Perform the Permanent and Temporary Impacts to the Wetlands
- Main Scope
  - LBNF Primary and Neutrino Beamlines
  - DUNE Near Detector Complex
  - Final Design is complete
  - Construction planned for CY2025 – CY2030

# Environmental, Safety & Health



# Environment, Safety and Health (ES&H) Outline

- Overview
- Integrated Safety Management
- RFP Proposal Content
- Applicable Regulations, Standards and Codes
- Programmatic Expectations
- Daily Work Planning
- Work Planning & Controls
- Training Requirements
- Oversight

## ES&H Overview

- Fermilab is a federal site operated by Fermi Research Alliance (FRA) under contract to the U. S. Department of Energy (DOE)
- This contract obligates FRA to operate the site in compliance with 10 CFR 851 (DOE Worker Safety and Health Program)
- FRA flows down these requirements to all subcontractors (such as the GC) through Specification Section 013100
- The Subcontractor must contractually flow these requirements down to its sub tier subcontractors.

## ES&H – Integrated Safety Management

- Fermilab has no higher priority than safety
- Fermilab uses an Integrated Safety Management (ISM) approach:
  - Line management is responsible for safety
  - Roles and responsibilities are clear
  - Competence is commensurate with responsibilities
  - Priorities are balanced
  - Safety standards and requirements are established before work is performed
  - Hazard controls and mitigation are tailored to work being performed
  - The conditions and requirements to be met to perform work are clear
- Safety is taken seriously at Fermilab and on this project; the goal is ZERO incidents.
- At Fermilab, the DOE Office of Enforcement is our OSHA equivalent. That office has the authority to investigate and level penalties directly on our subcontractors.
- Fermilab currently has multiple ongoing large projects; an incident on this project could stop work on multiple sites.

# ES&H – RFP Proposal Content

- Mandatory Requirements
  - Submit the Fermilab Subcontractor Safety Questionnaire (7010-F1)
    - Minimum FRA safety requirements
      - EMR less than 1.0
      - Less than 85% of the BLS average for Total Recordable case rate and DART case rate for heavy construction (NAICS Code 237)
    - Applies to all team members of joint ventures
- Technical Requirements
  - Past Corporate Performance regarding ESH
    - Offeror's safety statistics reviewed & evaluated
      - OSHA incident rates (3 yr. history)
      - Insurance Experience Modification Rate (EMR) (3 yr. history)
    - Corporate ESH Manual
    - Construction Environmental, Safety, & Health Certification (CESHC)

## ES&H – RFP Proposal Content

- Project management capabilities & experience of key personnel
  - Project Manager & Construction Superintendent
    - OSHA 30 Hour training
  - ESH Manager
    - Minimum experience
      - OSHA 30 Hour training
      - Minimum 10 years of construction experience as an ESH Manager for similar civil projects

## ES&H – Applicable Regulations, Standards, and Codes

- Including, but not limited to:
  - Fermilab Environmental Safety & Health Manual (FESHM)
  - 10 CFR 851 Worker Safety & Health Program
  - OSHA 1926 & 1910 (Occupational Safety & Health)
  - **2016 ACGIH Threshold Limit Values (TLV's)**
  - NFPA 70 *National Electrical Code*, 2017 edition
  - NFPA 70E, *Standard for Electrical Safety in the Workplace*, 2015 edition
  - 35 IAC Illinois Environmental Protection (Illinois EPA)
  - International Building Code (IBC)
  - DOE 450.4 Integrated Safety Management (ISM)
  - 10CFR 40 CFR (Environmental)
  - 10CFR 49 (DOT)
  - DOE 451.1B NEPA Compliance Program
  - ANSI B30 Series – Crane Safety
  - DOE Standard 1090 Hoisting and Rigging

## ES&H – Programmatic Expectations

- Implement and enforce approved ESH Program, Site Specific ESH Plan, and Injury & Illness Prevention Plan – including the sub-tier subcontractors
  - ESH Policy and expectations
    - General Rules of Conduct
    - ESH Compliance & Enforcement
  - Subcontractor requirements
    - Job site orientation
    - Hazard Analysis
    - Training
    - Daily work planning meetings
    - Personal Protective Equipment
    - Electrical safety
    - ESH inspection (Internal & External)
    - Emergency/incident reporting
  - Situational Awareness & Questioning Attitude

# ES&H – Daily Work Planning

- Daily Work Planning Meetings
  - Meeting held at the beginning of shift
  - Attended by all subcontractor personnel onsite that day
  - Meeting led by superintendent
  - Minimum duration of the meeting approximately 10-15 minutes
  - Each subcontractor foreman to discuss work activities & locations for that day along with a summary of hazards
  - Discuss deliveries of equipment & materials to the site
  - Subcontractor ESH Manager present to discuss any ESH issues & reinforce ESH program
  - Remind work force to follow their HAs, update as needed to address changing conditions
  - Feedback from work force
- Weekly Toolbox Meetings
  - Led by supervisors
  - Topical issues based on current operations i.e. inspect tools/equipment and PPE
  - Duration of roughly 5 minutes, timing at discretion of supervisors



## ES&H – Work Planning & Controls

- Task based hazard analysis documentation
  - Reviewed & accepted by Subcontractor ESH Manager
  - Reviewed & accepted by LBNF ESH Manager or Deputy
- Safety Data Sheets (SDS)
  - Submitted to LBNF Near Site Construction Coordinator
- Permits (Coordinated through LBNF NS Construction Coordinator)
  - Burn (welding, spark producing, hot work)
  - Excavation Permit (Fermilab provides utility locating, Subcontractor must give 10 working days advance notice to LBNF NS Construction Coordinator)

# ES&H – Training Requirements

- Provided by Fermilab to the Subcontractor personnel
  - Fermilab Subcontractor Orientation
  - Fermilab General Employee Radiation Training (GERT) (Video and quiz, 30 minutes)
  - These are offered every workday morning starting ***promptly*** at 07:30
  - Fermilab ID badges must be applied for on-line prior to coming to the Fermilab site (link below)
    - <https://eshq.fnal.gov/security-site-access/>
    - Real ID required to access site for all personnel
      - <https://news.fnal.gov/2023/04/visiting-fermilab-will-require-real-id-compliant-identification-beginning-may-3-2023/>
- Provided by the Subcontractor to their personnel
  - Corporate & Site Specific ESH Orientation
  - Verification of completion of OSHA required training
    - Competent training for excavation, scaffold, 10-hour and 30-hour OSHA
    - Task specific training (LOTO, NFPA-70E, equipment operator, fall protection, respirator/fit test)
    - Training & certification records available on-site

# ES&H Oversight

- Subcontractor ESH Oversight when work is being performed
  - Daily ESH program oversight by the superintendent, supervisors, and ESH Manager
  - Document Daily Work Planning and Weekly Toolbox meetings, copy to LBNF NS Construction Coordinator
  - Verify flow down of ESH requirements to sub-tier subcontractors
- Fermilab Project Daily Oversight
  - LBNF ESH Manager/Deputy site visits
  - Subcontractor may request input/assistance from LBNF ESH
  - Casual observation by Fermilab employees
- Other Fermilab Oversight
  - LBNF ESH Manager/Deputy and Subcontractor ESH Manager attend Progress Meetings
  - Department of Energy Fermi Site Office (FSO) inspections
  - Site visits by Fermilab ESH Reps, Subject Matter Experts (SMEs), and LBNF stakeholders
  - Environmental (SPCC, SWPPP, Flammable & Hazardous Material Controls) Inspections

# Quality Assurance

## Quality Assurance – RFP Requirements

- Submit Corporate Quality plan that complies with a nationally recognized standard
- Provide a description of how QC is going to be implemented on the project and a commitment to provide the Project QC Plan within 10 days after receipt of contract award
- Flows the QA/QC Program requirements down to subcontractors to the extent necessary to ensure contractors' compliance with the requirements
- QC Staffing
  - Quality Control Manager - minimum 10 years as the QC manager for site civil projects of \$10M or greater
  - Field geologist, environmental scientist, or engineer with at least 3 years experience performing environmental sampling to collect soil samples for environmental laboratory analysis from test pits and geotechnical soil borings.

## Quality Assurance – Specification Section 01 4100

- The Subcontractor's QC Plan shall consist of several components:
  - Table of Contents
  - QC Organization Chart
  - Names and Qualifications
  - Duties and Responsibilities
  - Outside Organizations
  - Submittal Procedures
  - Testing Lab information
  - Testing Plan and Log
  - Rework Procedure
  - Documentation procedures
  - Completion Inspection Procedures

# Quality Assurance – Specification Section 01 4100

- Required Meetings
  - Preconstruction Conference
    - Takes place before starting work, ground rules are established, and understandings reached that will establish positive relationships at the start of the contract.
  - QC Plan Meeting
    - The purpose for meeting is to develop a mutual understanding of the QC Plan requirements. All QC requirements from the contract and the specifications should be discussed
  - Weekly QC Meetings
    - The QC Meeting may be held in conjunction with the construction meetings. The QC Manager develops the agenda, conducts the meeting, and prepares the minutes.

## Quality Assurance – Specification Section 01 4100

- Subcontractor Daily Report
  - Production Report
    - Prepared by the Subcontractor's Project Manager, documents the efforts expended and the progress made on a daily basis.
    - Must tie to an associated activity on the Subcontractor's schedule and clearly identify the on-site labor support for each sub-subcontractor
  - Quality Control Report
    - Prepared by the QC Manager, is specifically intended to address the progress and issues with the Quality Control Program
    - Space is designated for documenting actions including rework.
    - Documenting the controls for any "follow-up" phase work is of importance.
    - The report must include a certification by the QC Manager that the work is in compliance with the subcontract, except as noted in the report.



## Quality Assurance – Specification Section 01 4100

- Non-Compliance

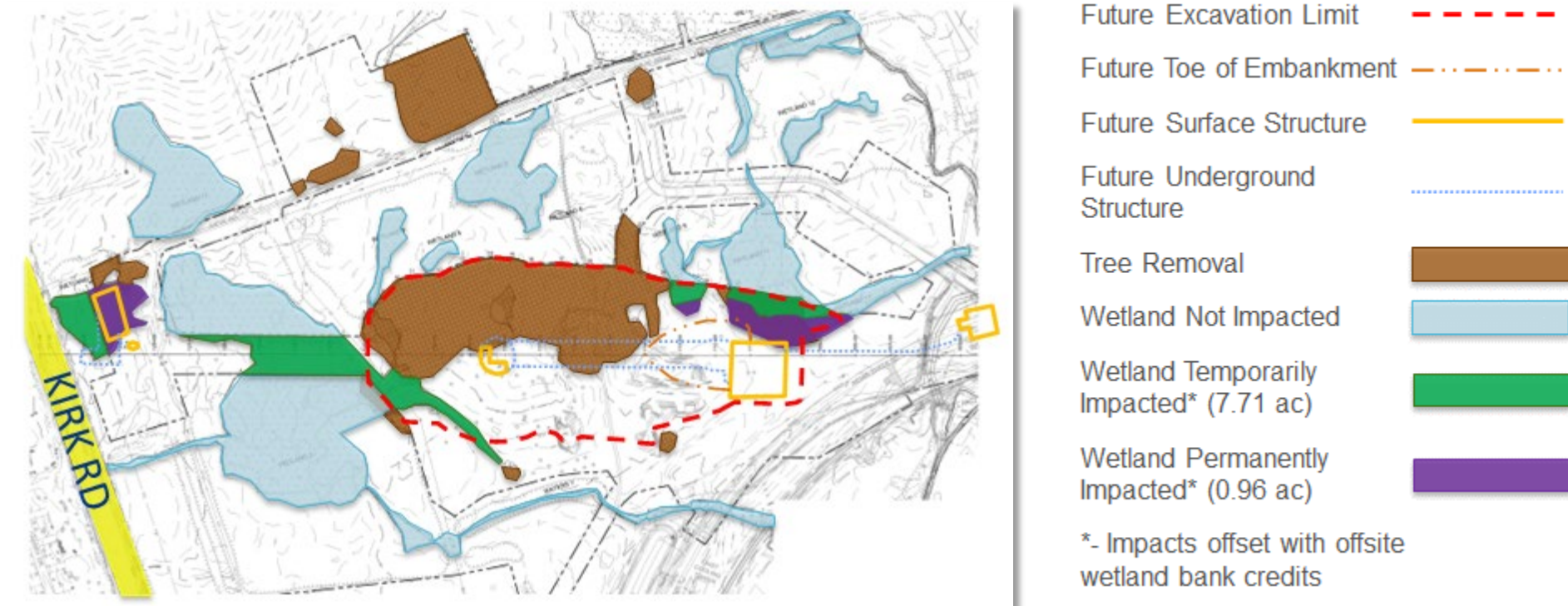
- The primary focus of the QC System is prevention. When this fails and non-compliance is encountered, the QC organization shall identify, document, and correct the non-compliance.
- In a case where the Subcontractor's QC Organization is not effective and/or an unacceptable number of non-compliance issues are identified, the FRA QA Representative must take actions in accordance with the Quality Improvement section of the LBNF/DUNE QA Plan.
- Failure to comply with the QC provisions of the contract may result in non-payment by the LBNF Project for any non-conforming work and any work dependent upon non-conforming work.
- Dismissal of the Project Superintendent, QC Manager, or other members of the Subcontractor's staff may be considered if non-compliance continues

# Wetland Permit Work Overview

# Wetland Permit Work Overview

Preparing the site to construct LBNF at Fermilab!

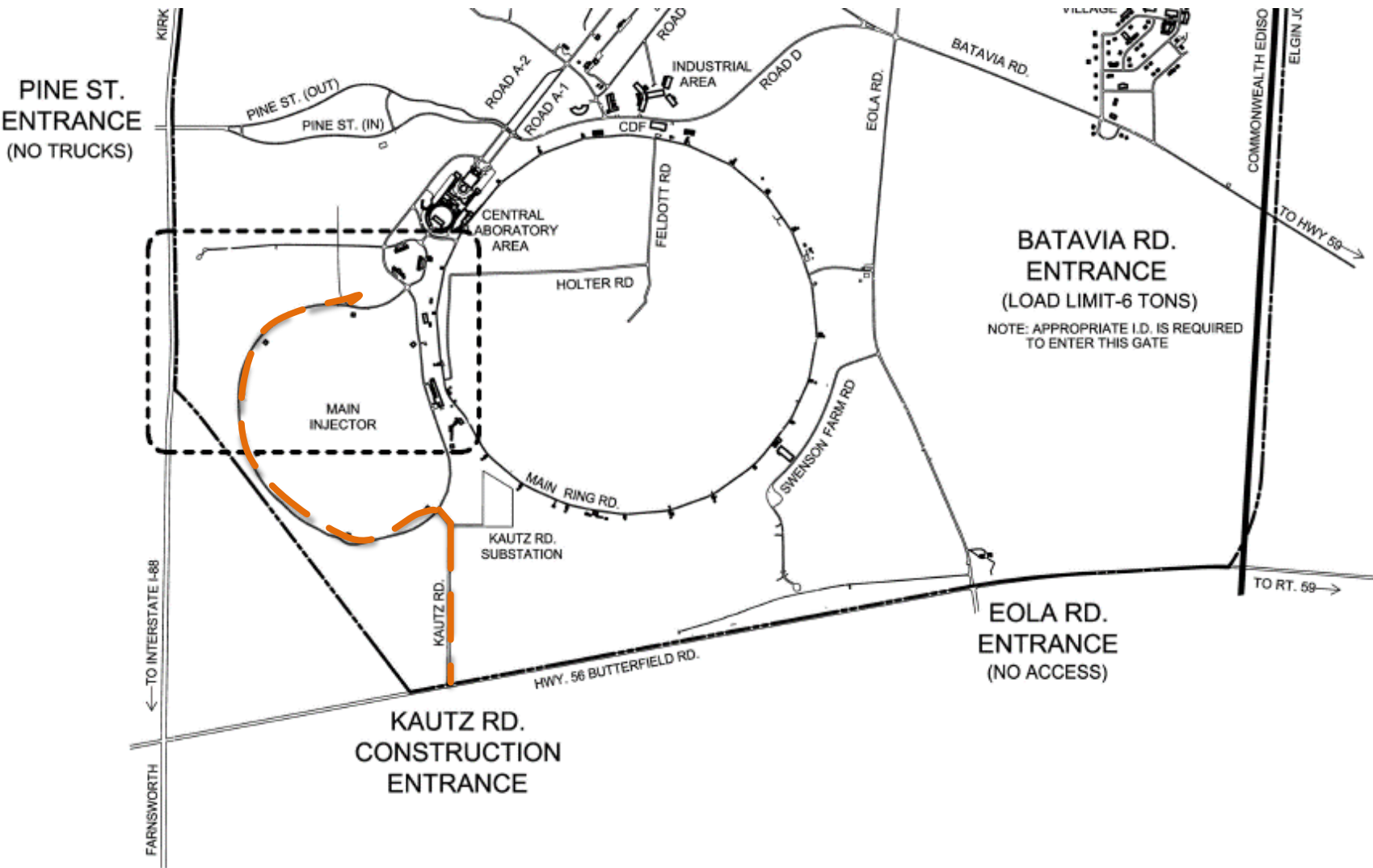
- Perform all tree removal and both permanent and temporary impacts to wetland areas.
- Active US Army Corps of Engineers (USACE) Wetland Permit obtained March 14, 2022. Permit # LRC-2013-00387
- Wetland Permit Work construction activities shall minimize impact to Laboratory operations.



## Wetland Permit Work Overview

- FRA will be CM and Construction Coordinator for Wetland Permit Work.
- FRA Construction Coordinator(s) are primary field points of contact for Subcontractor.

# Wetland Permit Work Overview - Fermilab Site Access



## Wetland Permit Work - Construction Schedule

- Milestone 0 – Notice to Proceed Issued
  - November 2023
- Milestone 1 – Tree Removal Begins
  - November 15, 2023
- Milestone 2 – Tree Removal and Earthwork Complete
  - March 15, 2024
- Milestone 3 – Project Complete
  - March 31, 2024



## Wetland Permit Work Overview - ES&H Highlights

- Tree clearing in Winter (November 15 thru March 15) in compliance with LBNF EA commitments.
- Excavated materials stockpiled on Project Site as indicated.
- **No wetland impacts outside the limits of impact indicated on the Contract Documents.**
- Access to work areas through adjoining wetlands not permitted.



# Procurement



## Procurement - Basis for Award

- FRA will use a Lowest Price Technically Acceptable (LPTA) source selection process.
- Award will be made on the basis of the lowest evaluated price of proposals meeting or exceeding the acceptability standards for non-cost factors.
- Tradeoffs between non-cost factors and cost/price are not permitted. Proposals are evaluated for acceptability but not ranked using the non-cost/price factors.
- The evaluation factors that establish the requirements of technical acceptability are as shown on the next slide.

# Procurement - Mandatory Requirements for Technical / Management Proposal

1. Submit all required items per the RFP, listed under Enclosures in the RFP Letter.
2. Demonstrated Experience - Delivered three (3) similar projects within the past 10 years of \$1M total project cost or greater.
3. Demonstrated Experience - Demonstrated excavation and site preparation experience on at least three (3) completed similar projects within the past ten (10) years. Performed in the role as Prime GC, JV, or Primary Subcontractor.
4. Minimum Single Project Performance & Payment Bonding capacity equal to 110% of the proposed contract value or greater. Evidence should be provided in a letter from the Proposer's Bonding/Surety provider stating the capability and commitment if awarded.
5. Annual Revenues greater than \$10M for each of the past five (5) years.
6. Minimum FRA Safety requirements. EMR less than 1.0, for last three years, less than 85% BLS average for TRCR and DART for heavy construction. This applies to all members of Joint Ventures.
7. Confirmation of attendance of the prime GC, or if the prime GC is a Joint Venture, a member of a Joint Venture at mandatory pre-proposal conference and site visit.
8. Preliminary cost-loaded Schedule delivered.
9. Submitted list of primary subcontractors (all subs over \$100k subcontract value).
10. Qualifications of Key Personnel (Project Manager, Superintendent and ES&H Manager).

## Procurement - Components of a Responsive Proposal (also see MANDATORY REQUIREMENTS CHECKLIST in RFP)

Return with Proposal:

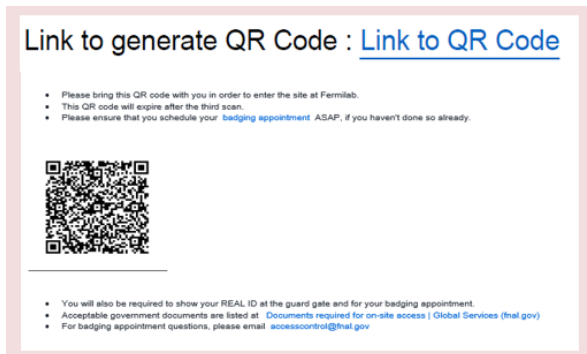
- Responses to Mandatory Requirements
- Price Proposal Form
- Unit Price Proposal Form
- **\*Fully Burdened Rate Form**
- Supplier Portal Registration Completion Statement
- Representations & Certifications Forms (PUR-466 & SARC)
- Bid Bond Form (FL-41)
- Construction Environmental, Safety & Health Plan (CESHP) Form
- Subcontractor Injury & Illness Data Questionnaire
- Organizational Conflicts of Interest Form
- Representations Regarding Proprietary Data (FL-105)
- Rights to Proposal Data (FL-107)

## Procurement - Schedule and Target Award Dates

RFP Issued:	April 20, 2023
Pre-Proposal Meeting:	May 4, 2023
Questions Submittal Deadline:	May 12, 2023 (Fri), 5pm (central)
Response to All Questions:	May 17, 2023 (Wed)
Proposals Due:	May 19, 2023 (Fri), 5pm (central)
Target Contract Award:	June 2023
NTP Target Date	November 1, 2023

# Procurement – Site Visit Details

- Fill out the Site Access and Badging Form as a Business Visitor at <https://eshq.fnal.gov/security-site-access/> (Fermilab affiliation is LBNF – Long Baseline Neutrino Facility)
- Review and approval process can take up to 7 days.
- Once approved, download QR Code



- On day of Site Visit, present QR Code and Real ID at Guard Post. Guard will give you an Access Sticker to be placed on your outer garment.
- The Site Visit participants will then meet at the base of Wilson Hall on the west side entrance.
- All participants will need to be escorted 100% of the time during the Site Visit.
- Depending on the number of participants requesting access the Site Visit logistics will vary.

# Questions?

Brian Quinn, Procurement Specialist

[bquinn@fnal.gov](mailto:bquinn@fnal.gov)

## Version Tracker

- v0 – posted 27 April 2023; baseline version for review

[Return to title slide](#)