

CONCRETE CURB AND GUTTER

CONCRETE

ASPHALT

LIGHT POLE

PROPOSED STORM WATER STRUCTURE

PROPOSED STORM WATER PIPE

PROPOSED MINOR CONTOUR

PROPOSED MAJOR CONTOUR

PROPOSED LIGHT POLE

PROPOSED JUNCTION BOX W/ ELECTRIC

VALVES, MANHOLE LIDS, INLET TOPS & METAL LIDS TO BE ADJUSTED TO GRADE

EXISTING PIPE TO BE EXTENDED/ CONNECTED TO NEW STRUCTURES AS NECESSARY, USING SAME MATERIAL

RELOCATE EXISTING UTILITY AS NECESSARY

REMOVE & REPLACE INLET FRAME & GRATE AS NECESSARY

VERIFY DEPTH & LOCATION OF PIPES PRIOR TO REMOVAL & INSTALLATION OF NEW STRUCTURES

ADJUST CURB AS NECESSARY TO MATCH EXISTING INLET

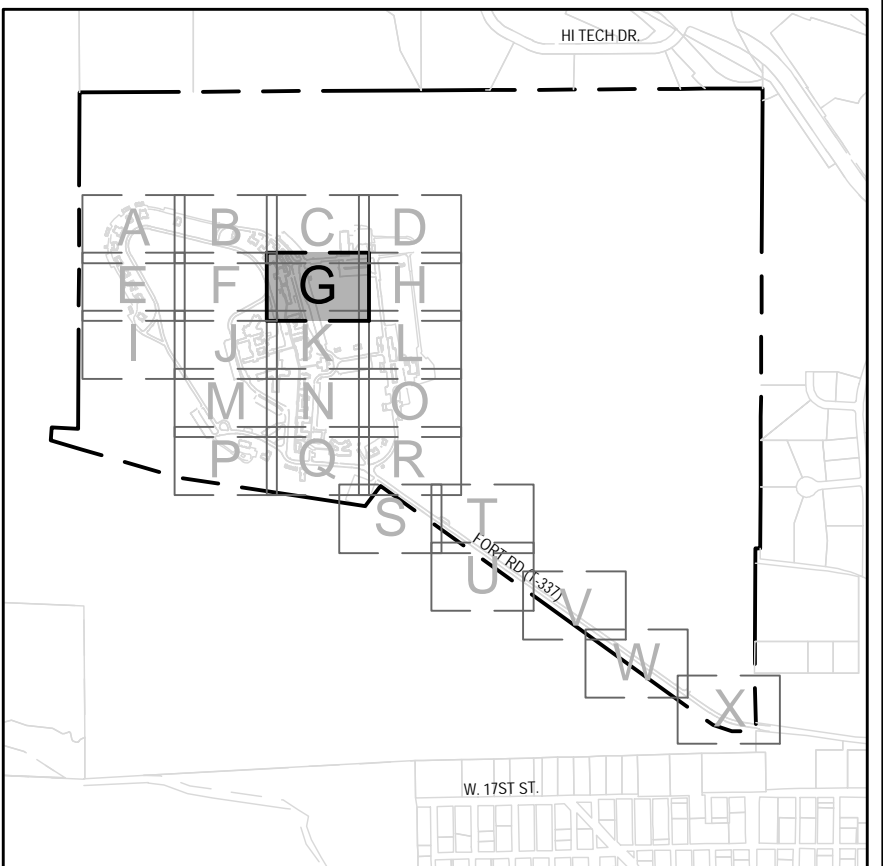
GRADE OF ROAD TO MATCH EXISTING HEATED CONC SIDEWALK

VA PROVIDED CONDUIT, LOCATION SUBJECT TO CHANGE, COORDINATE WITH COR

FOR COMPLETE SITE LEGEND SEE SHEET GI004

SEE SHEET CS157

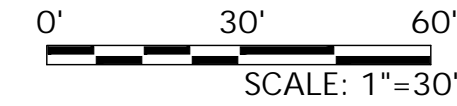
SEE SHEET CS162



KEY MAP
1"=1500'



CALL 811 OR 1-800-849-2476
SITE SERIAL: 2019290075



Revisions:	Date

CONSULTANTS:

ARCHITECT/ENGINEERS:

acela

architects + engineers

acela architects + engineers, pc office: 610.365.4023
2633 Moravian Ave. website: www.acela-ae.com
Allentown, PA 18103 email: info@acela-ae.com

Professional Engineer

Christopher W. Geary

PE# 17277

Drawing Title
Grading + Utility Plan 'G'

Approved Project Director
SHERIDAN VAHCS PLANNING AND ENGINEERING

Project Title
Resurface Roads And Parking Lots

Location
Sheridan VA Medical Center Sheridan, WY

Date
6/14/2020

Checked
Geary

Drawn
Peters

Project Number
666-17-104

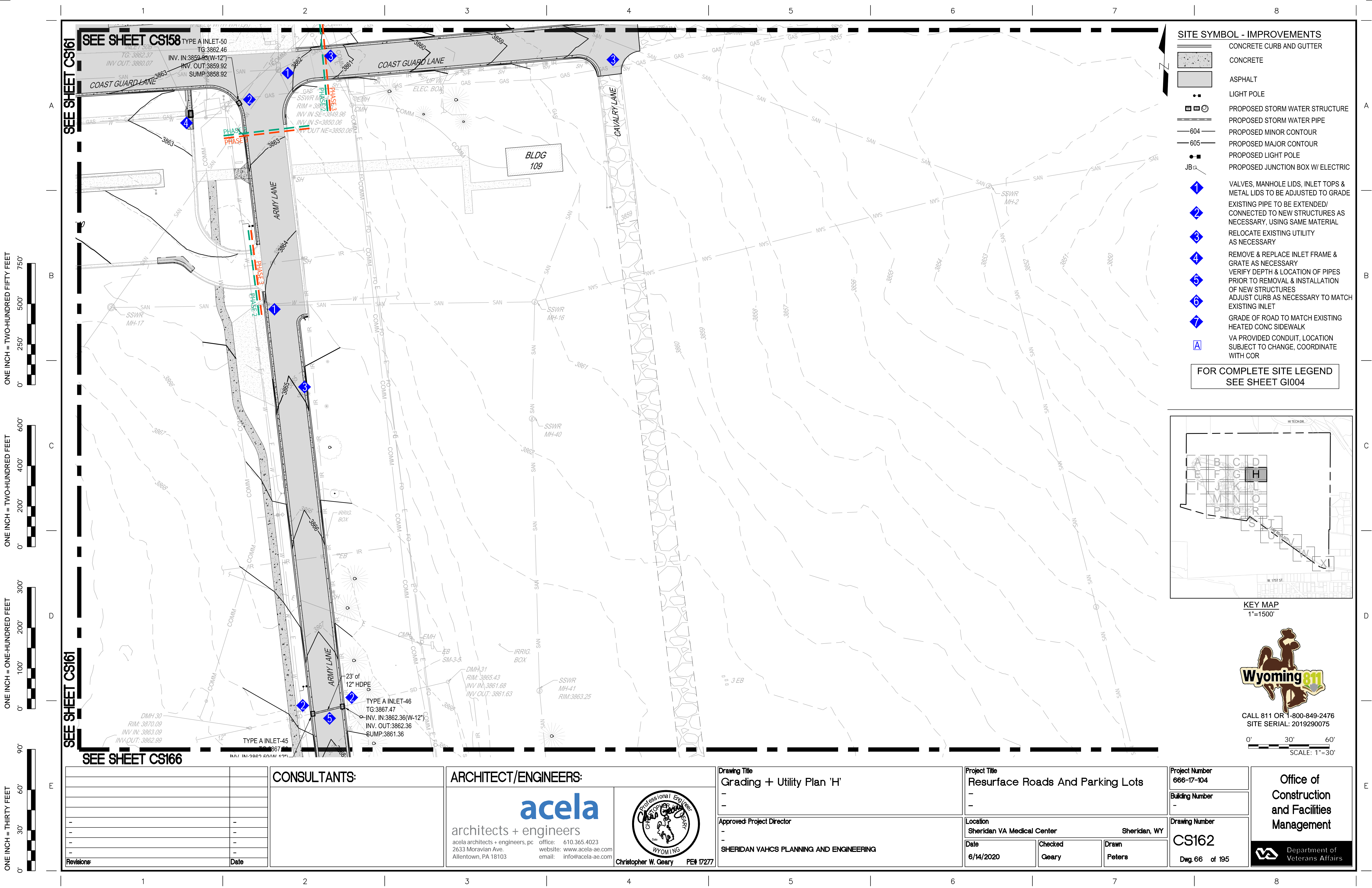
Building Number
-

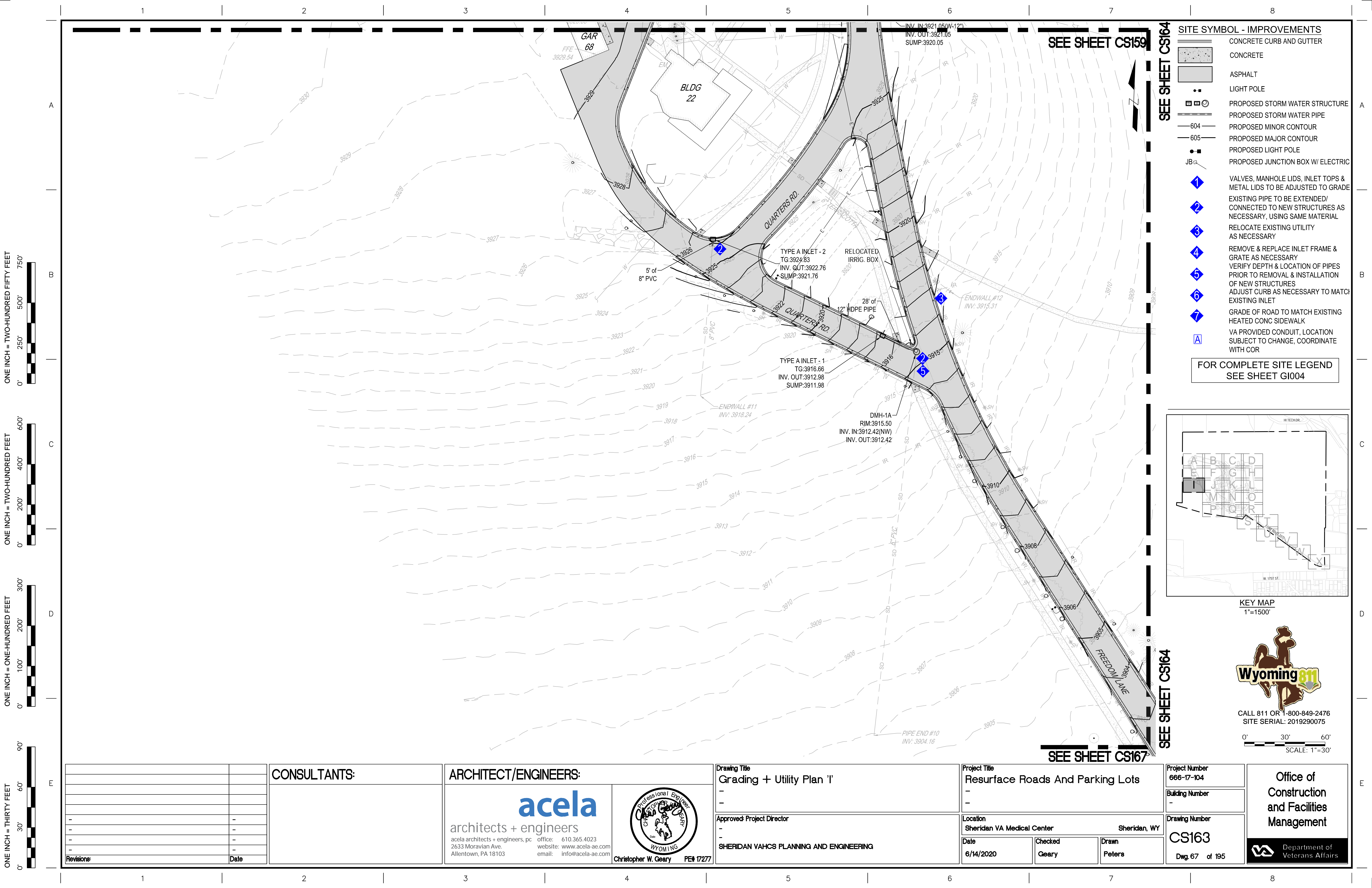
Drawing Number
CS161

Dwg. 65 of 195

Office of
Construction
and Facilities
Management

Department of
Veterans Affairs





SEE SHEET CS164

SEE SHEET CS159

SEE SHEET CS167

1

2

3

4

5

6

7

A

SITE SYMBOL - IMPROVEMENTS

CONCRETE CURB AND GUTTER

CONCRETE

ASPHALT

LIGHT POLE

PROPOSED STORM WATER STRUCTURE

PROPOSED STORM WATER PIPE

PROPOSED MINOR CONTOUR

PROPOSED MAJOR CONTOUR

PROPOSED LIGHT POLE

PROPOSED JUNCTION BOX W/ ELECTRIC

VALVES, MANHOLE LIDS, INLET TOPS & METAL LIDS TO BE ADJUSTED TO GRADE

EXISTING PIPE TO BE EXTENDED/ CONNECTED TO NEW STRUCTURES AS NECESSARY, USING SAME MATERIAL

RELOCATE EXISTING UTILITY AS NECESSARY

REMOVE & REPLACE INLET FRAME & GRATE AS NECESSARY

VERIFY DEPTH & LOCATION OF PIPES PRIOR TO REMOVAL & INSTALLATION OF NEW STRUCTURES

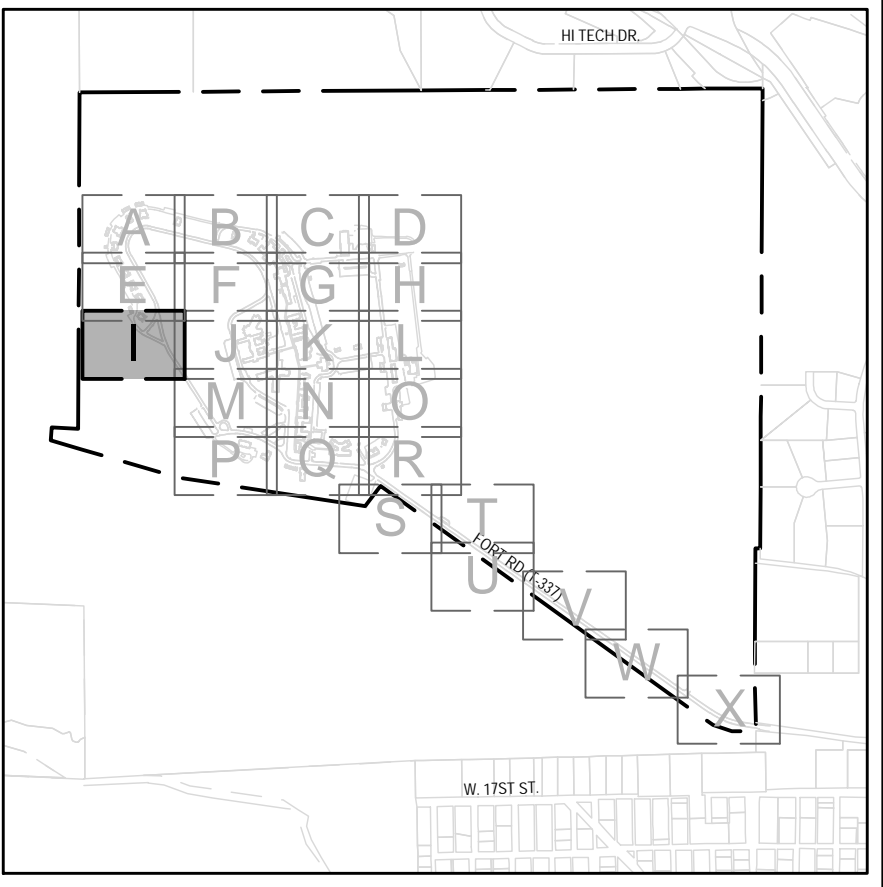
ADJUST CURB AS NECESSARY TO MATCH EXISTING INLET

GRADE OF ROAD TO MATCH EXISTING HEATED CONC SIDEWALK

VA PROVIDED CONDUIT, LOCATION SUBJECT TO CHANGE, COORDINATE WITH COR

FOR COMPLETE SITE LEGEND

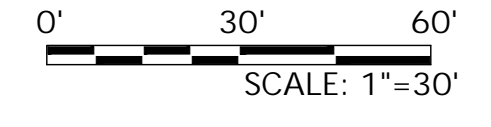
SEE SHEET GI004



KEY MAP
1"=1500'



CALL 811 OR 1-800-849-2476
SITE SERIAL: 2019290075



SCALE: 1"=30'

		CONSULTANTS:	ARCHITECT/ENGINEERS:	Drawing Title		Project Title		Project Number		Office of Construction and Facilities Management
				Grading + Utility Plan 'I'		Resurface Roads And Parking Lots		666-17-104		
				-		-		Building Number		
				-		-		-		
-	-			Approved: Project Director		Location		Drawing Number		
-	-			-		Sheridan VA Medical Center Sheridan, WY		CS163		
-	-			SHERIDAN VAHCS PLANNING AND ENGINEERING		Date		Dwg. 67 of 195		
Revisions:	Date			6/14/2020		Checked Geary	Drawn Peters			

