

A

B

C

D

E

F

A

B

C

D

E

F

GENERAL NOTES

1. PROVIDE A NEW TYPE 1, 240 KA SPD FOR MAIN SERVICE PANEL (MDP3, 208 VOLTS, 1000 AMPS). CONNECT TERMINALS OF SPD ON SERVICE FEED TO MAIN BREAKER/MAIN LUGS. REMOVE EXISTING TVSS. SEE GENERAL NOTE 10 & 12.
2. ROUTE A 1/0 COPPER WIRE FROM NEW GROUND GRID TO NEW GROUND BUS FOR BUILDING. SEE GENERAL NOTE 11 & 12.



5MDPG

1. PROVIDE A NEW TYPE 1, 240 KA SPD FOR MAIN SERVICE PANEL (5MPG, 208 VOLTS, 1600 AMPS). CONNECT TERMINALS OF SPD ON SERVICE FEED TO MAIN BREAKER/MAIN LUGS. SEE GENERAL NOTE 10 & 12.
2. ROUTE A 1/0 COPPER WIRE FROM NEW GROUND GRID TO NEW GROUND BUS FOR BUILDING. SEE GENERAL NOTE 11 & 12.



SMDPG

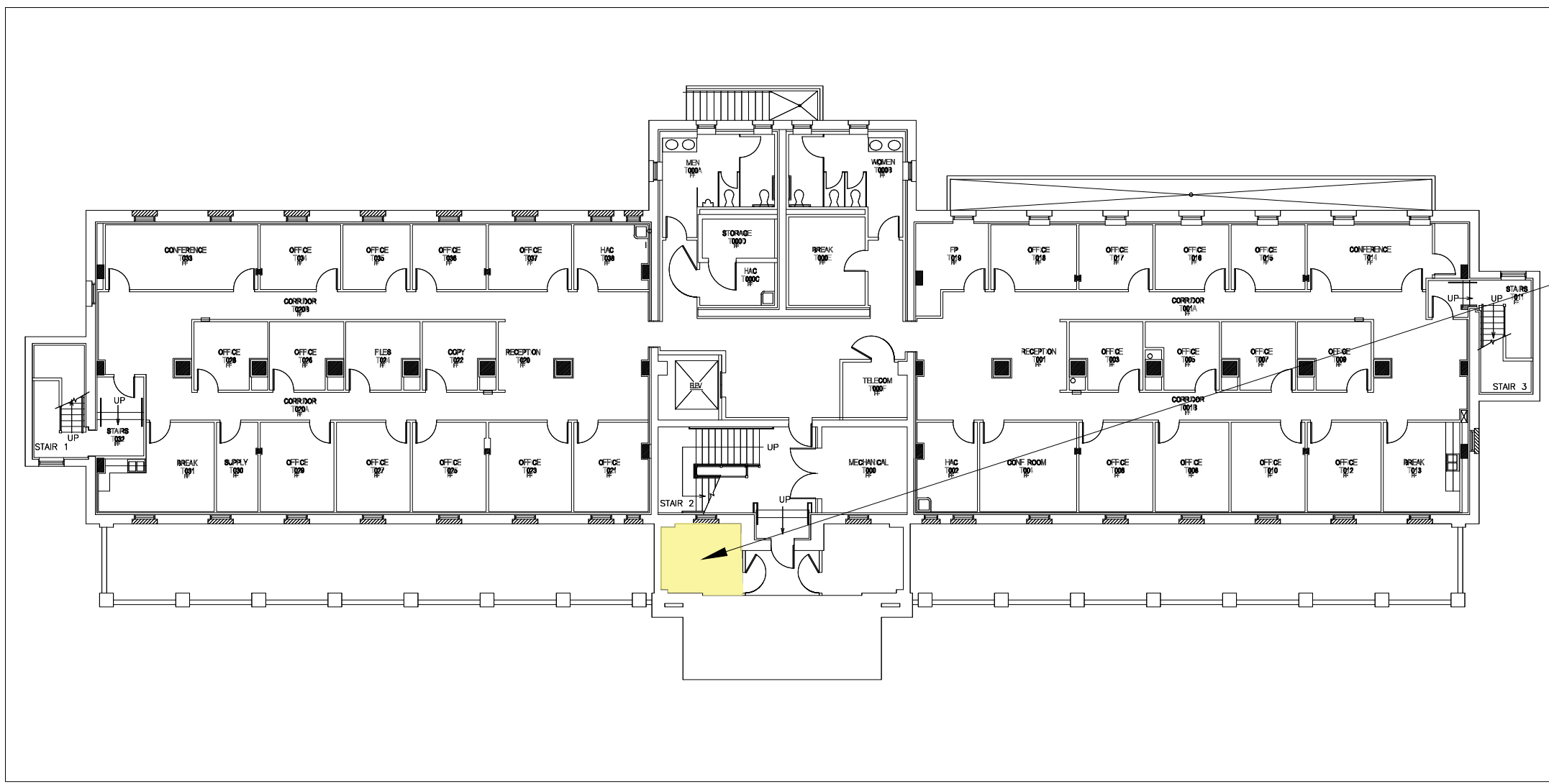
1. PROVIDE A NEW TYPE 1, 240 KA SPD FOR MAIN SERVICE PANEL (M5B, 480 VOLTS, 1200 AMPS). CONNECT TERMINALS OF SPD ON SERVICE FEED. SEE GENERAL NOTE 10 & 12.
2. ROUTE A 1/0 COPPER WIRE FROM NEW GROUND GRID TO NEW GROUND BUS FOR BUILDING. SEE GENERAL NOTE 11 & 12.



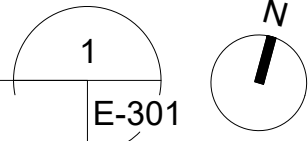
MSB-BH2

BUILDING 3 - MAIN ELECTRICAL PANEL MAPS

SCALE: N.T.S.

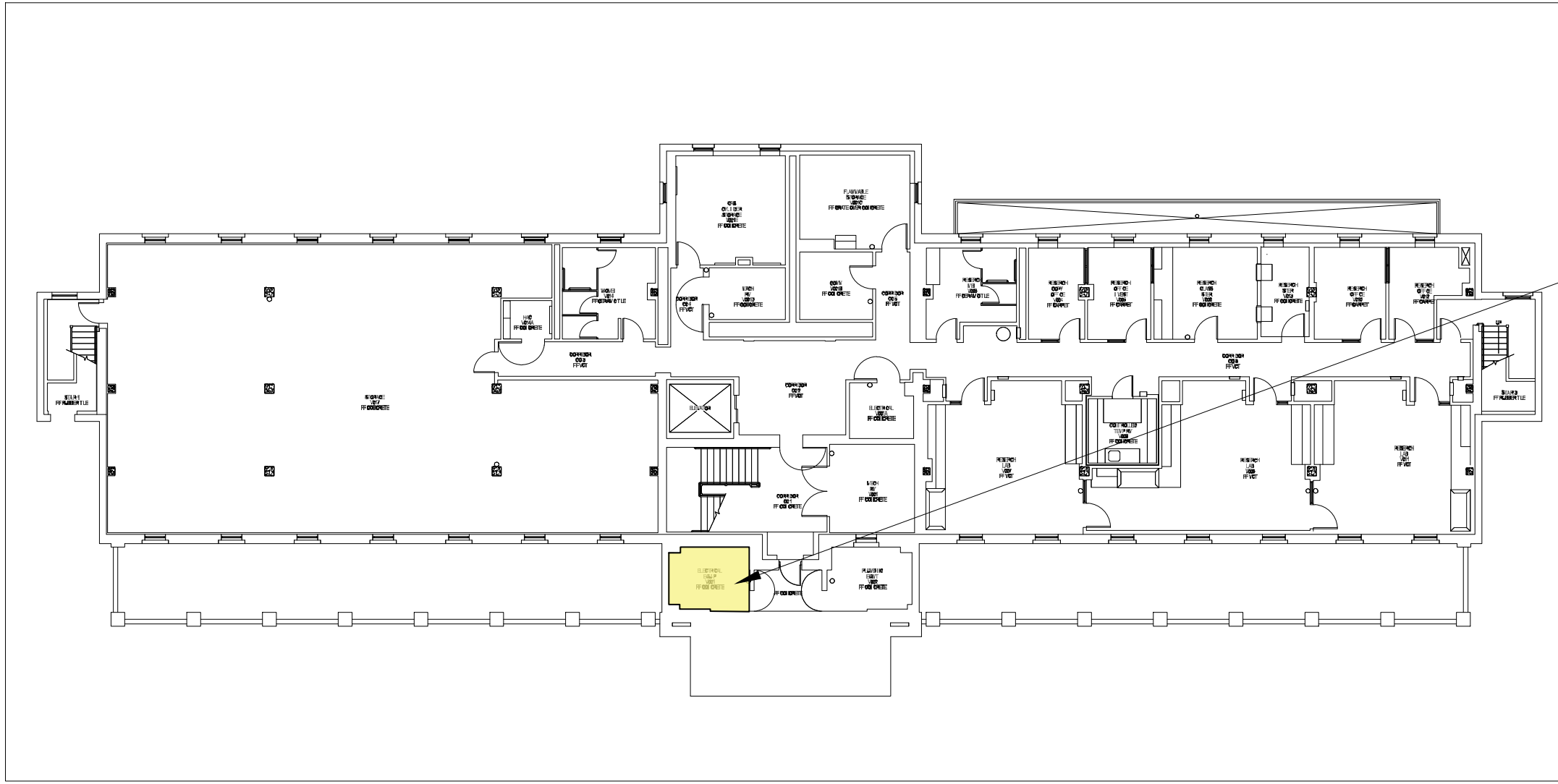


5MDPG

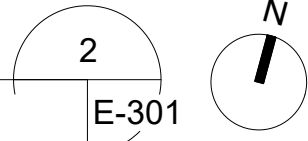


BUILDING 5 - MAIN ELECTRICAL PANEL MAPS

SCALE: N.T.S.

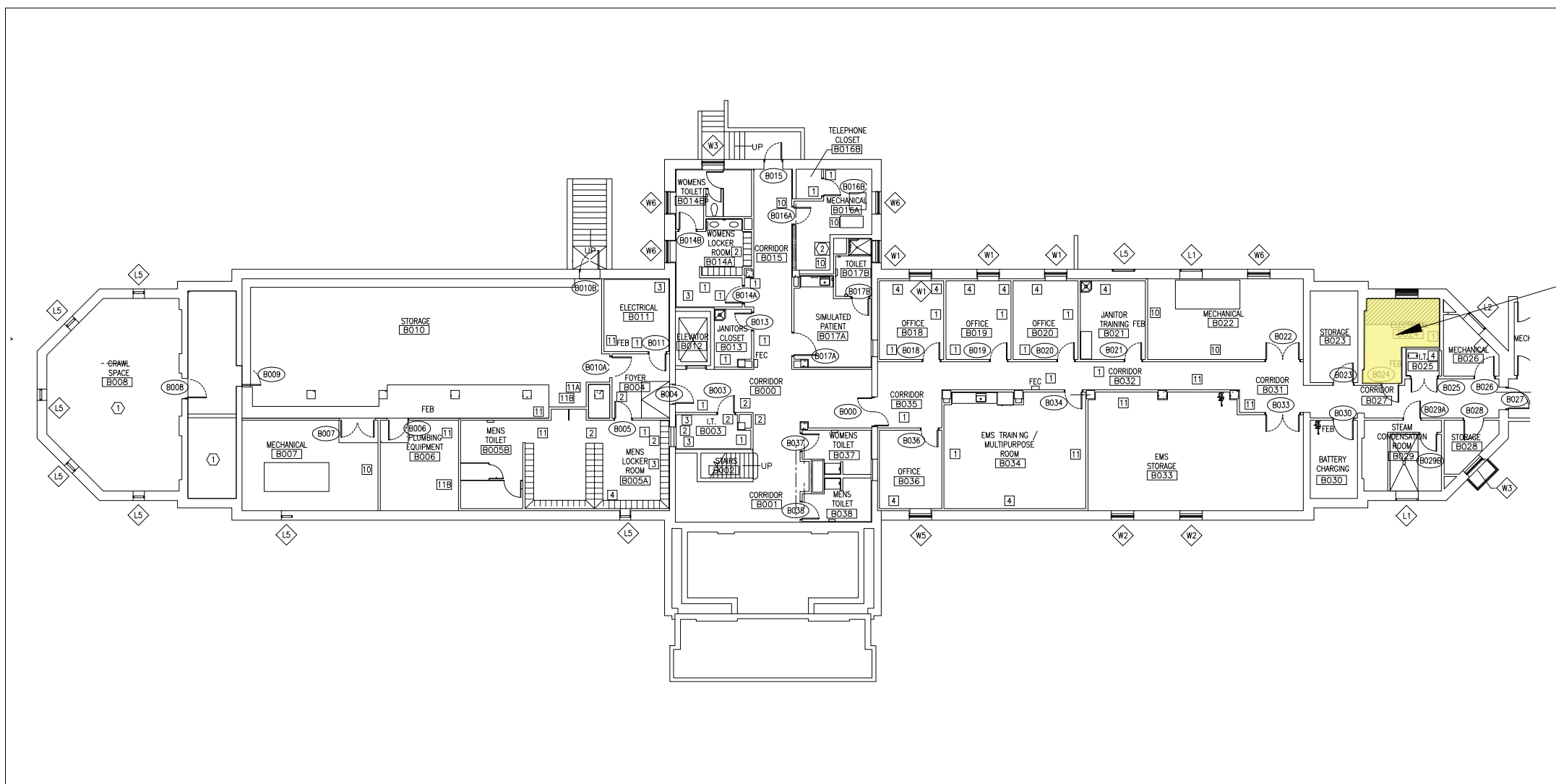


SMDPG

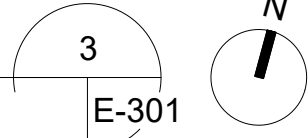




BUILDING 8 - MAIN ELECTRICAL PANEL MAPS

SCALE: N.T.S.



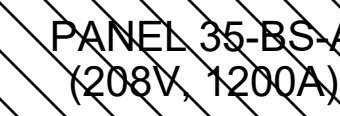
MSB-BH2
PANEL



		CONSULTANTS:			ARCHITECT/ENGINEERS:  Raymond-Pond SDVOSB JV, LLC 1035 Green St. SE Suite A Conyers, GA 30012 770-483-9592 Art Warner	Drawing Title MAIN ELECTRICAL PANEL MAPS (3, 5, & 8)		Project Title LIGHTNING PROTECTION & GROUNDING STUDY BUILDINGS 3, 5, 8, 35, 36, 37, 108, 115, 116, 160, 161, 162, 200 COMPLEX (69, 77, 200, 204, 205) 201, 208		Project Number 621-22-117		Office of Construction and Facilities Management
											Building Number	
							Approved: Project Director	Location JAMES H. QUILLLEN VA MEDICAL CENTER MOUNTAIN HOME, TN		Drawing Number E-301		VA U.S. Department of Veterans Affairs
								Date SEPT. 2022	Checked RL	Drawn CAS	Dwg. 25 of 33	
Revisions:	Date											

SPD FOR MAIN SERVICE PANEL (35-SB-A, 208 VOLTS, 1200 AMPS). CONNECT
FEED TO MAIN BREAKER/MAIN LUGS. SEE GENERAL NOTE 10 & 12.

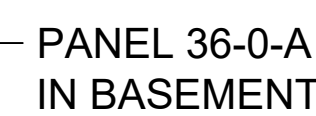
NEW GROUND GRID TO NEW GROUND BUS FOR BUILDING. SEE GENERAL



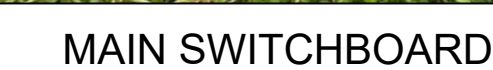
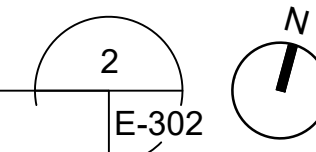
NEW TYPE 1, 240 KA SPD FOR MAIN SERVICE PANEL (35-SB-A, 208 VOLTS, 1200 AMPS). CONNECT
OF SPD ON SERVICE FEED TO MAIN BREAKER/MAIN LUGS. SEE GENERAL NOTE 19 & 12.

2. COPPER WIRE FROM NEW GROUND GRID TO NEW GROUND BUS FOR BUILDING. SEE GENERAL

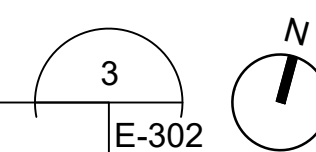
~~SCALE: N.T.S.~~



SCALE: N.T.S.



SCALE: N.T.S.

VA FORM 08-6231

GENERAL NOTES

1. PROVIDE A NEW TYPE 1, 240 KA SPD FOR MAIN SERVICE PANEL (MCC DR-BH, 480 VOLTS, 800 AMPS). CONNECT TERMINALS OF SPD ON SERVICE FEED TO MAIN BREAKER/MAIN LUGS. SEE GENERAL NOTE 10 & 12.
2. PROVIDE A NEW TYPE 1, 240 KA SPD FOR THE ATS (480 VOLTS, 400 AMPS). CONNECT TO THE GENERATOR FEED SIDE OF THE ATS. SEE GENERAL NOTE 10 & 12.
3. ROUTE A 1/0 COPPER WIRE FROM NEW GROUND GRID TO NEW GROUND BUS FOR BUILDING. SEE GENERAL NOTE 11 & 12.

NOT IN CONTRACT



ATS

MCC



ATS



MCC

BUILDING 108 - MAIN ELECTRICAL PANEL MAPS

SCALE: N.T.S.





RELAY PANEL

MAIN PANEL



RELAY PANEL



MAIN PANEL

BUILDING 115 - MAIN ELECTRICAL PANEL MAPS

SCALE: N.T.S.





MAIN SWITCHGEAR MSG



MAIN SWITCHGEAR

BUILDING 160 - MAIN ELECTRICAL PANEL MAPS

SCALE: N.T.S.





MAIN SWITCHGEAR MSG

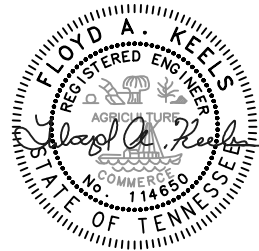




MAIN SWITCHGEAR

BUILDING 160 - MAIN ELECTRICAL PANEL MAPS

SCALE: N.T.S.



		CONSULTANTS:		ARCHITECT/ENGINEERS:  <div>Raymond-Pond SDVOSB JV, LLC 1035 Green St. SE Suite A Conyers, GA 30012 770-483-9592 Art Warner</div>	Drawing Title MAIN ELECTRICAL PANEL MAPS (108, 115, & 160)	Project Title LIGHTNING PROTECTION & GROUNDING STUDY <small>BUILDINGS 3, 5, 8, 35, 36, 37, 108, 115, 116, 160, 161, 162, 200 COMPLEX (69, 77, 200, 204, 205) 201, 208</small>	Project Number 621-22-117	<div>Office of Construction and Facilities Management</div> <div> U.S. Department of Veterans Affairs</div>
						Building Number		
					Approved: Project Director	Location JAMES H. QUILLEN VA MEDICAL CENTER MOUNTAIN HOME, TN	Drawing Number E-303 <small>Dwg. 27 of 33</small>	
Revisions:	Date					Date SEPT. 2022	Checked RL	

A

three inches = one foot

one and one half inches = one foot

B

one inch = one foot

three quarters inch = one foot

C

one half inch = one foot

one quarter inch = one foot

D

one eighth inch = one foot

one quarter inch = one foot

E

one eighth inch = one foot

one quarter inch = one foot

one eighth inch = one foot

F

one eighth inch = one foot

one eighth inch = one foot

one eighth inch = one foot

A

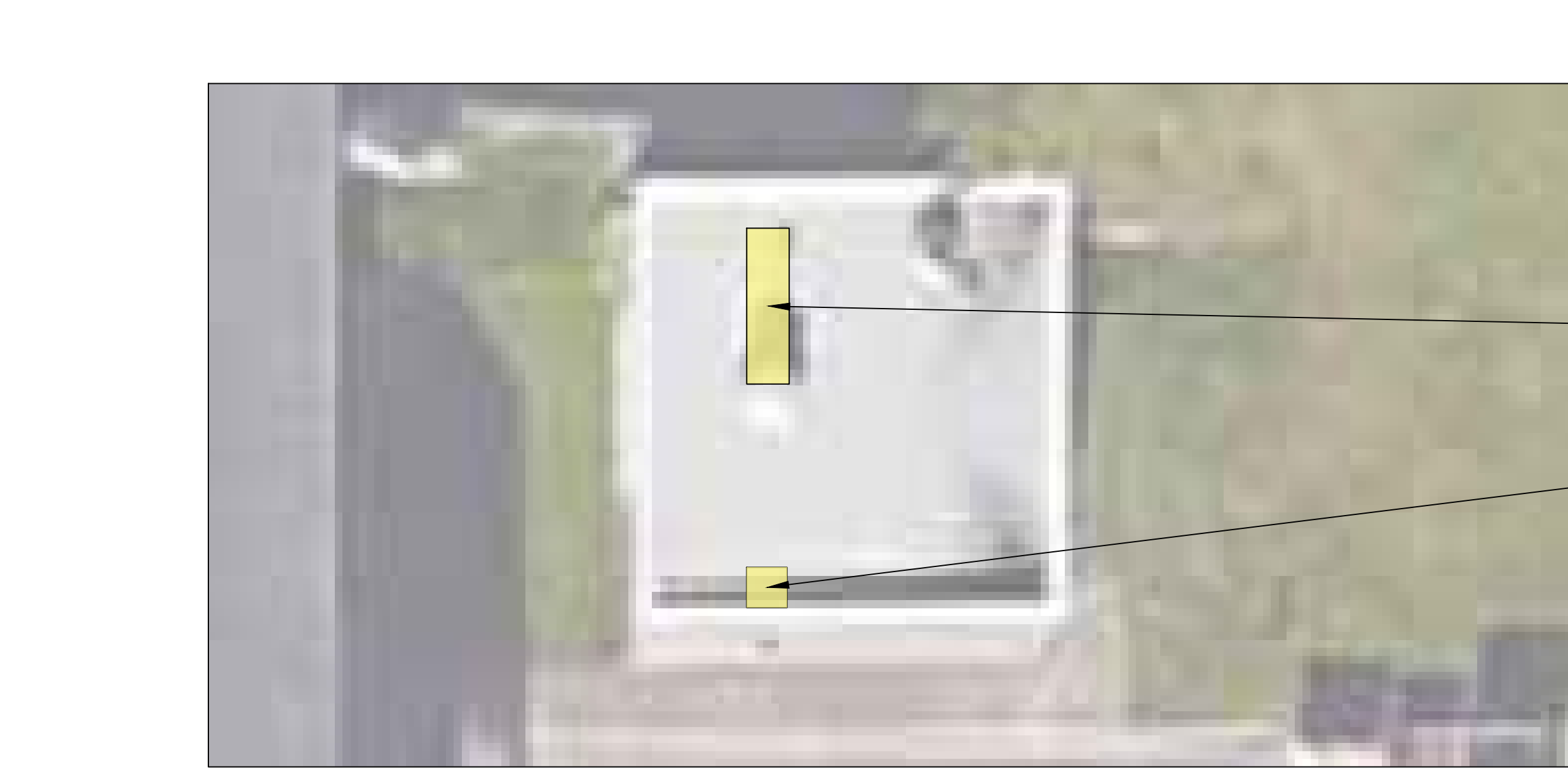
B

C

D

E

F



MAIN PANEL

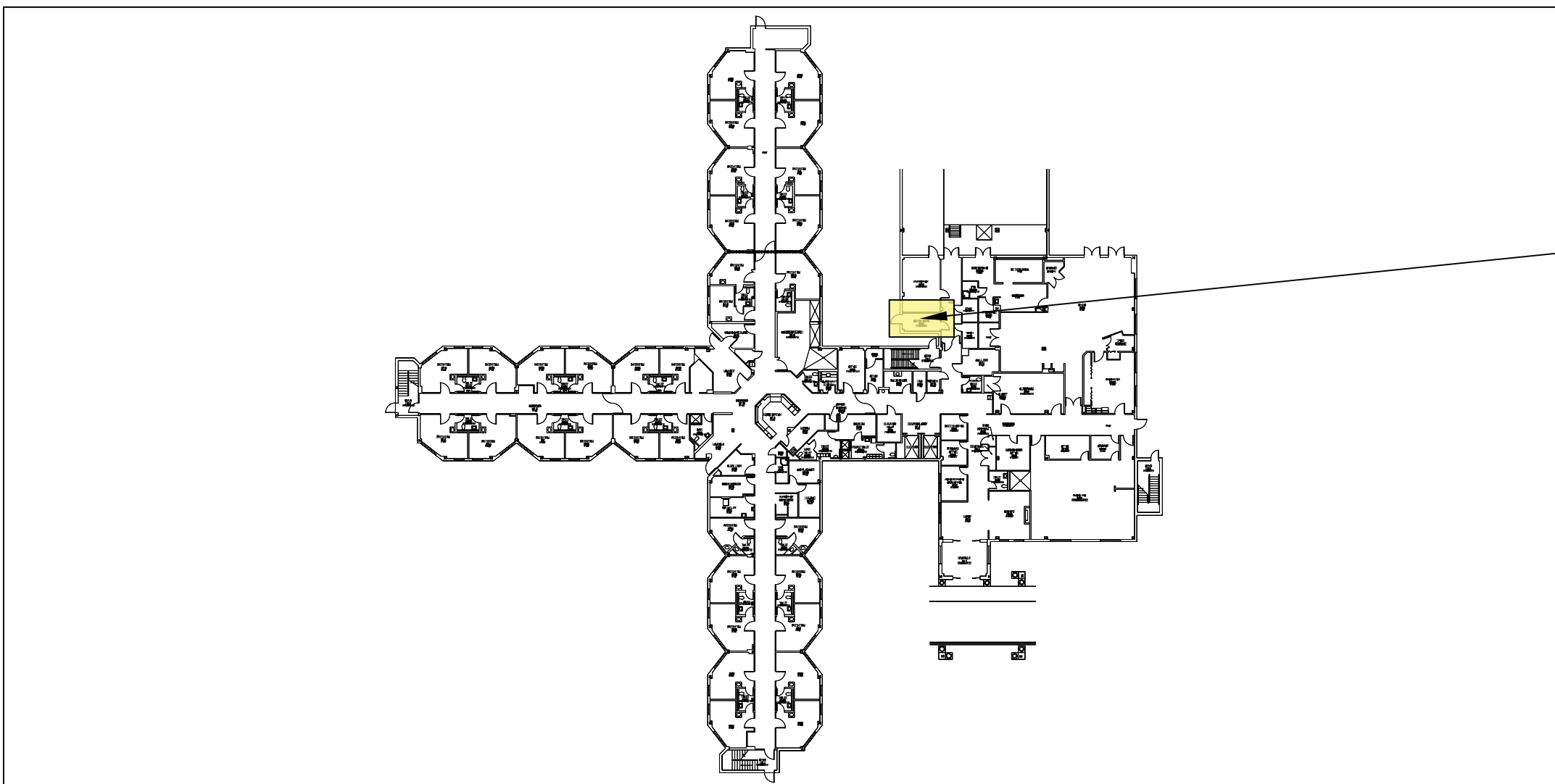
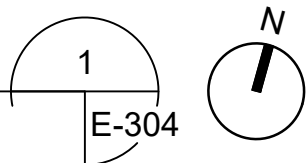
ATS



MAIN PANEL

BUILDING 161 - MAIN ELECTRICAL PANEL MAPS

SCALE: N.T.S.



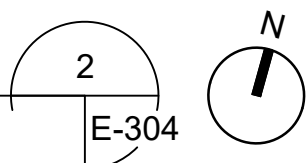
MSB-162
PANEL



MSB-162

BUILDING 162 - MAIN ELECTRICAL PANEL MAPS

SCALE: N.T.S.



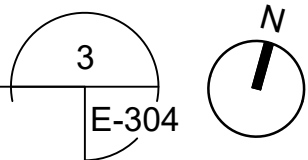
MSB-201
PANEL



MSB-201

BUILDING 201 - MAIN ELECTRICAL PANEL MAPS

SCALE: N.T.S.



GENERAL NOTES

1.

UTILIZE EXISTING SPD INSTALLED MAIN SERVICE PANEL (MAIN PANEL, 480 VOLTS, 2000 AMPS).
2.

ROUTE A 1/0 COPPER WIRE FROM NEW GROUND GRID TO NEW GROUND BUS FOR BUILDING. SEE GENERAL NOTE 11 & 12.

1.


PROVIDE A NEW TYPE 1, 240 KA SPD FOR MAIN SERVICE PANEL (MSB-162, 208 VOLTS, 1600 AMPS). CONNECT TERMINALS OF SPD ON SERVICE FEED TO MAIN BREAKER/MAIN LUGS. SEE GENERAL NOTE 10 & 12.
2.

PROVIDE A NEW GROUND BUS FOR BUILDING. SEE GENERAL NOTE 11 AND 12.

1.

PROVIDE A NEW TYPE 1, 240 KA SPD FOR MAIN SERVICE PANEL (MSG-201, 480 VOLTS, 1000 AMPS). CONNECT TERMINALS OF SPD ON SERVICE FEED TO MAIN BREAKER/MAIN LUGS. SEE GENERAL NOTE 10 & 12.
2.

ROUTE A 1/0 COPPER WIRE FROM NEW GROUND GRID TO NEW GROUND BUS FOR BUILDING. SEE GENERAL NOTE 11 & 12.

		CONSULTANTS:		ARCHITECT/ENGINEERS:	 <div>Raymond-Pond SDVOSB JV, LLC 1035 Green St. SE Suite A Conyers, GA 30012 770-483-9592 Art Warner</div>	Drawing Title	Project Title	Project Number	Office of Construction and Facilities Management	
						MAIN ELECTRICAL PANEL MAPS (161, 162, & 201)	LIGHTNING PROTECTION & GROUNDING STUDY	621-22-117		
							BUILDINGS 3, 5, 8, 35, 36, 37, 108, 115, 116, 160, 161, 162, 200 COMPLEX (69, 77, 200, 204, 205) 201, 208	Building Number		
							Approved: Project Director	Location	Drawing Number	 U.S. Department of Veterans Affairs
								JAMES H. QUILLEN VA MEDICAL CENTER MOUNTAIN HOME, TN	E-304	
								Date	Dwg. 28 of 33	
Revisions:	Date									