

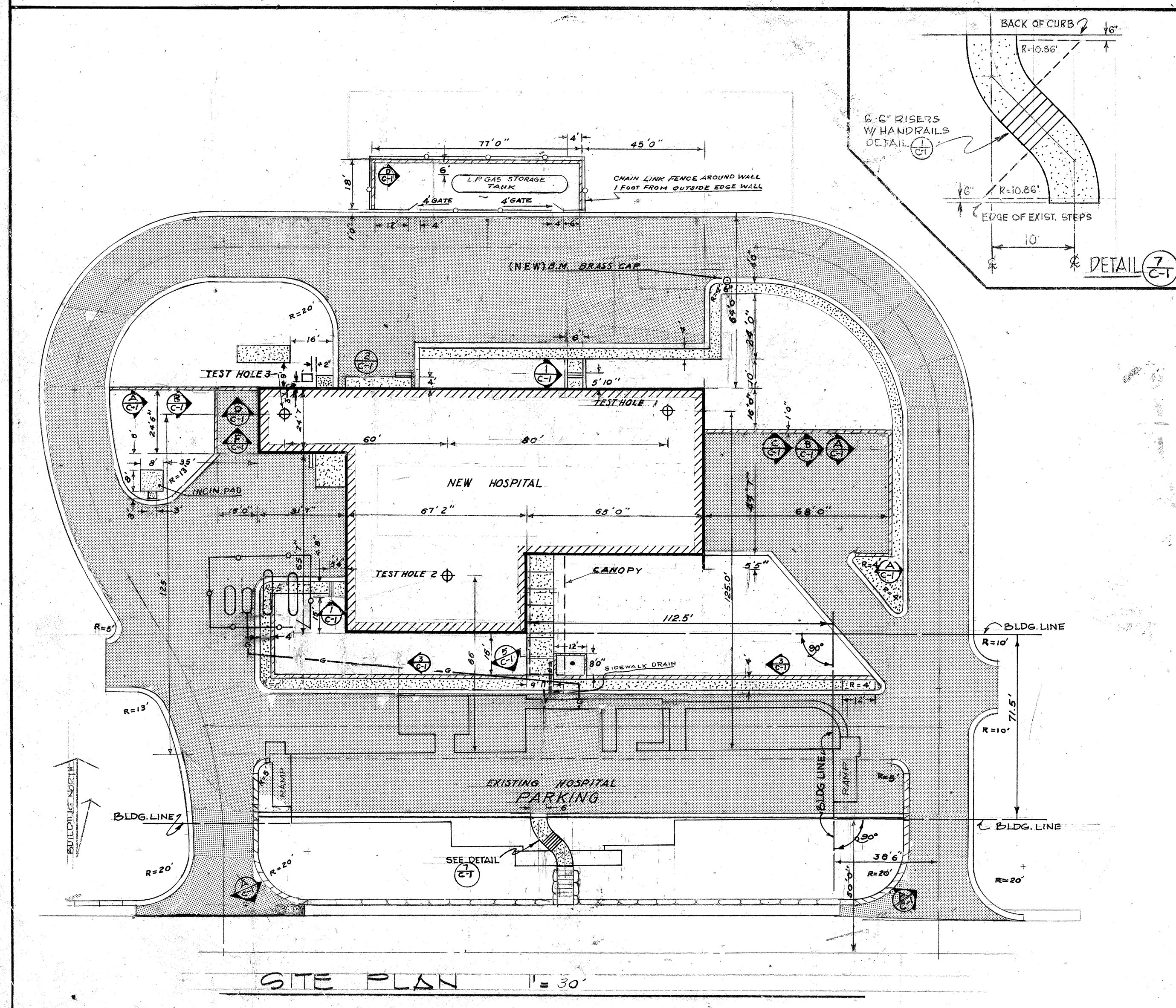
Diagram illustrating the cross-section of a retaining wall and spot elevations:

- EXISTING CONTOUR**: Indicated by a dashed line at elevation **72.0**.
- NEW CONTOUR**: Indicated by a solid line at elevation **46.71**.
- RETAINING WALL**: The vertical structure shown in cross-section.
- CURB**: The base of the retaining wall.
- CURB & GUTTER**: The bottom edge of the wall structure.
- SPOT ELEVATIONS**:
 - 79.3**: Elevation at the top of the wall.
 - 77.3**: Elevation at the base of the wall.
- Orientation**: A north arrow is shown, pointing towards the top-left, labeled **BUILDING NORTH** and **TRUE NORTH**.

SEE GENERAL NOTES (ENCL. No. 5) AND SHEET NO C-1;
DRAWING NO. SF-397 (QUARTERS) FOR LOCATION
OF TRADING FARM, AND LOCATION OF BUILDINGS
AND FEATURES TO BE REMOVED.

U.S.C. & G.S. BENCH MARK CAP NO. J284932
LOCATED EAST OF TRIBAL TRADING POST
ELEV. 6604.76'

PAVED STREET



TEST HOLE NO.3
ELEVATION 6674.0

HORIZONTAL SCALE: 1" = 25'

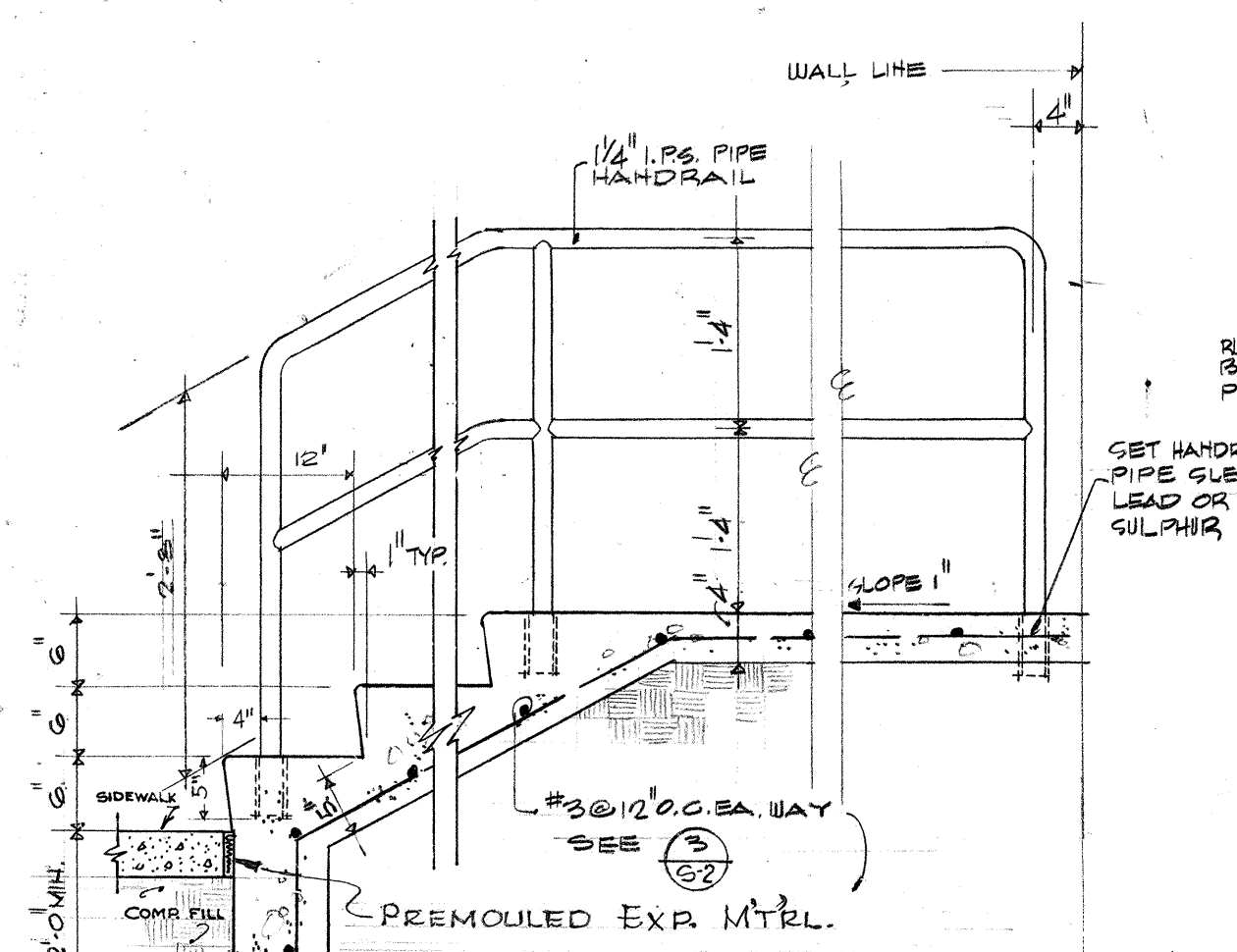
TEST HOLE NO.1
ELEVATION 6676.5

NOTES - SOIL TESTS

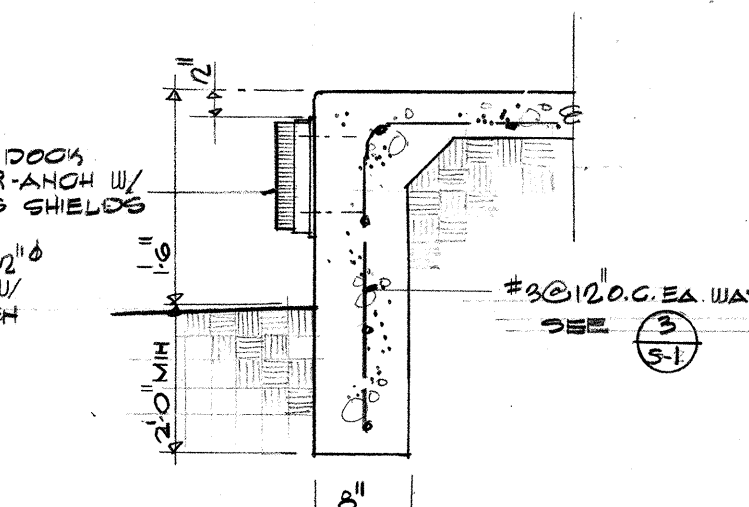
1. WATER TABLE NOT ENCOUNTERED IN ANY TEST BORING.
2. N_6 IS EQUAL TO THE NUMBER OF BLOIS REQUIRED TO DRIVE A 2-INCH, OUTSIDE, BY 1.375-INCH, INSIDE DIAMETER, STANDARD SPLIT SPOON SAMPLER THROUGH A VERTICAL, DISTANCE OF ONE FOOT, OR THEREAFTER. NOTED INTERVALS ARE INDICATED BY A 40-LB. HAMMER, WITH A FREE FALL OF 30 INCHES. PENETRATION COUNTS AT 6-INCH, OR, NOTED, VERTICAL INTERVALS ARE INDICATED IN THE MARGIN TO THE RIGHT OF, AND TO ADJACENT TO, THE PENETRATION COUNTS AT 6-INCH THAT IN CALIFORNIA TYPE SAMPLER, EQUIPPED WITH 2-INCH DIAMETER BRASS LINERS, WAS SUBSTITUTED FOR THE STANDARD SPLIT SPOON SAMPLER. WHEN THIS CALCULATION IS USED, THE PENETRATION COUNTS, N_6 , IN THIS CASE ARE THE NUMBER OF BLOIS REQUIRED FOR THE FIRST ONE FOOT PENETRATION.
3. MOISTURE CONTENTS OF RECOVERED PENETRATION SAMPLES ARE CIRCLED IN THE MARGIN TO THE RIGHT OF N_6 AND ARE EXPRESSED AS PERCENTAGE OF DRY WEIGHT.
4. DRY DENSITIES ARE TABULATED TO THE RIGHT OF THE MOISTURE CONTENT VALUES FOR REPRESENTATIVE SAMPLES RECOVERED WITH THE CALIFORNIA TYPE SAMPLER. THESE DENSITY VALUES ARE EXPRESSED IN POUNDS PER CUBIC FOOT.
5. ATTERRBERG LIMITS OF THE MINUS NO. 40 MESH FRACTION OF RECOVERED PENETRATION SAMPLES ARE PLACED IN THE % MOISTURE CONTENT, TO THE RIGHT OF THE BORING LOG FOR TEST HOLE NO. 2. THE ATTERRBERG LIMITS ARE APPRECIATED AS FOLLOWS: LL - LIQUID LIMIT, PL - PLASTIC LIMIT, P - PLASTICITY INDEX, AND SL - SHRINKAGE LIMIT.
6. GRAIN-SIZE CLASSIFICATIONS OF RECOVERED PENETRATION SAMPLES ARE TABULATED TO THE RIGHT OF THE BORING LOG FOR TEST HOLE NO. 2. GRAIN-SIZE CLASSIFICATIONS ARE BY THE M.I.T. SYSTEM AS FOLLOWS:

C	GRAVEL	2.0 mm	TO	100 mm
CS	COURSE SAND	0.6 mm	TO	2.0 mm
MS	MEDIUM SAND	0.2 mm	TO	0.6 mm
FS	FINE SAND	0.075 mm	TO	0.2 mm
SEC.	SILT AND CLAY	FINEER	THAN	0.06 mm
7. VERTICAL ARROW (↓) OVER BORING LOG GRAPHICS INDICATES CENTER OF BORING TO DESIGNATED HORIZONTAL SCALE. LOGS OF TEST HOLES 1 AND 3 OFF-SET TO AVOID OVERLAPPING OF DATA.

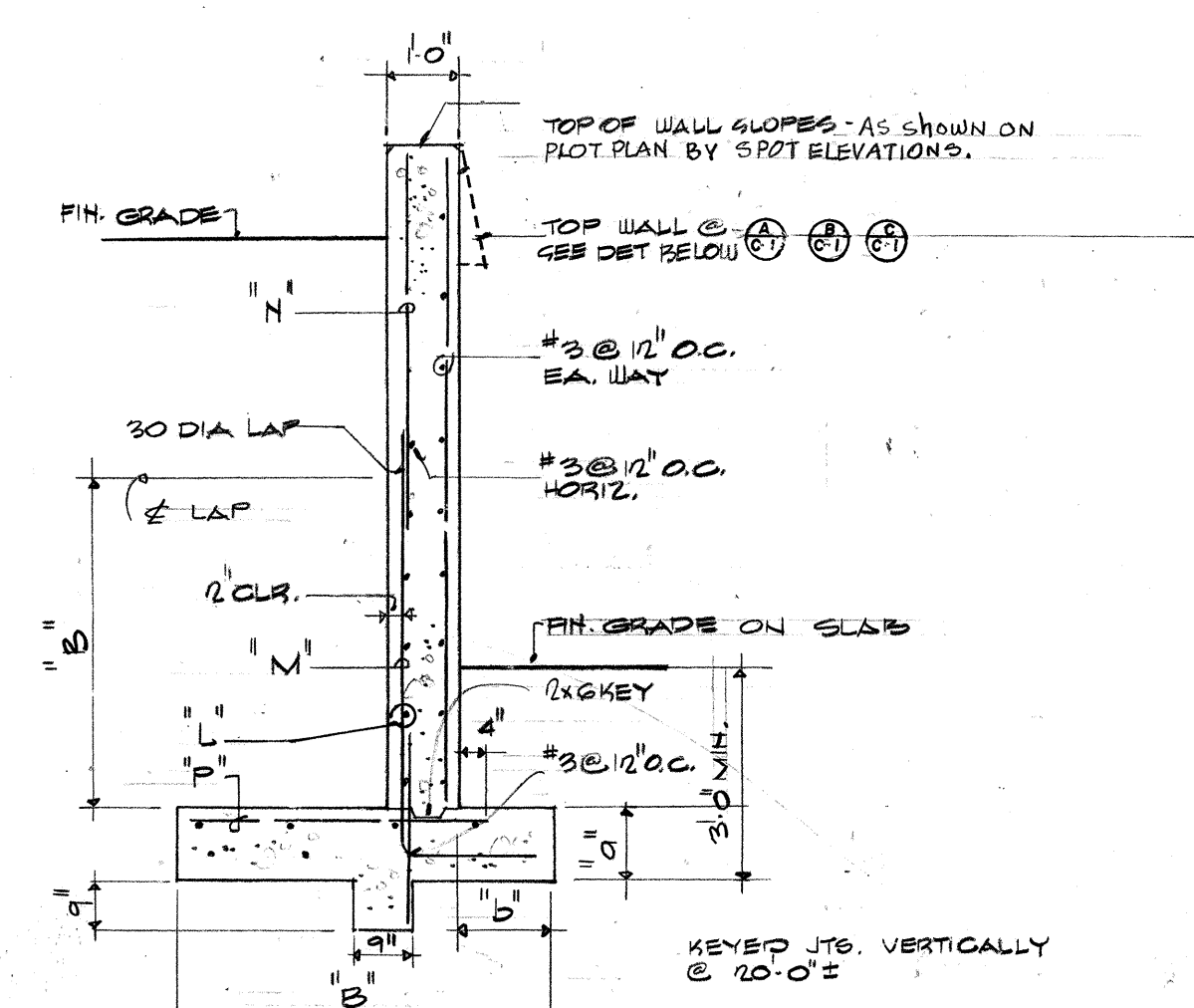
FOR GENERAL NOTES SEE DETAIL SHEET NO. C-3



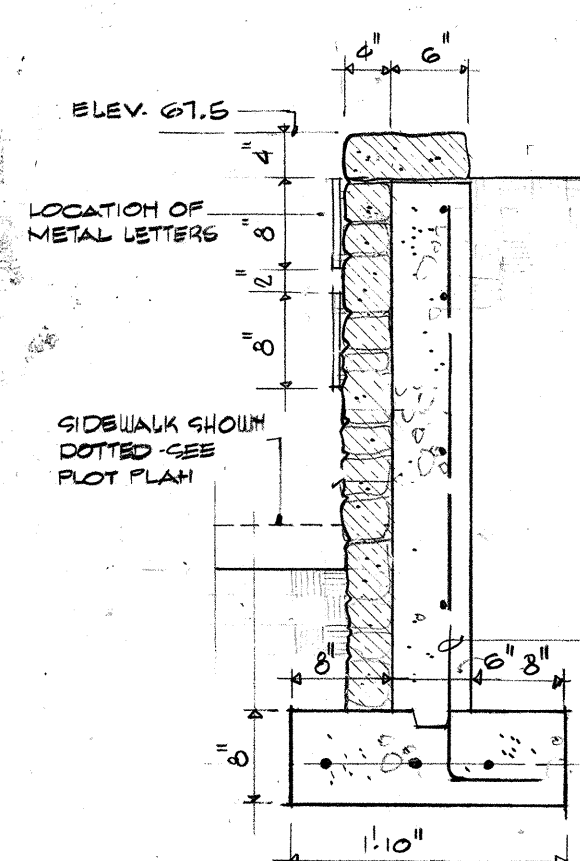
CONC. STOOP & HANDRAIL DETAIL (1) 3/4" = 1'-0"



DOCK BUMPER DETAIL (2) 3/4" = 1'-0"

RETAINING WALL SECTIONS $\frac{3}{8}" = 1'-0"$

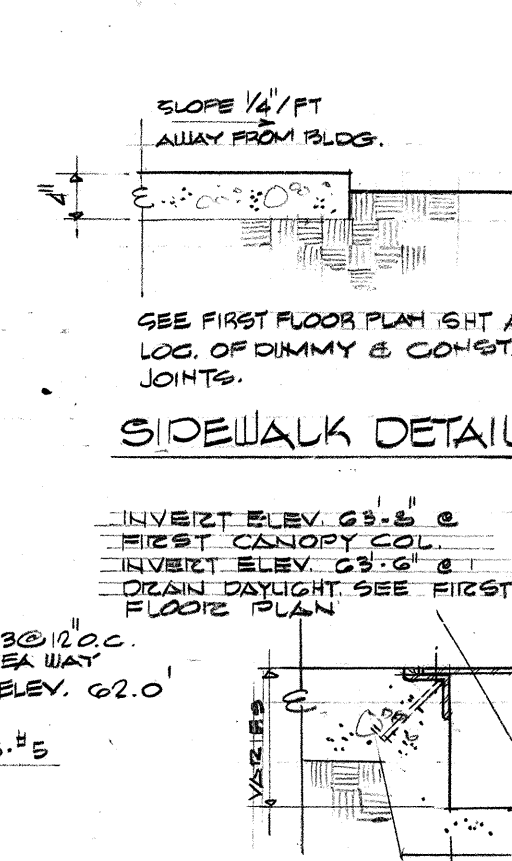
SEE GENERAL NOTE (MISC. No. 7)



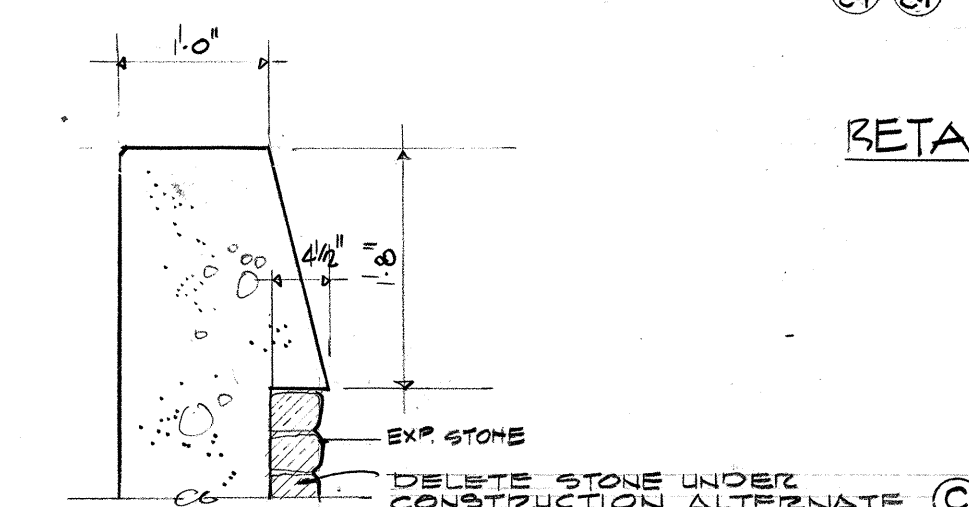
WALL DETAIL (3) $\frac{3}{4}" = 1'-0"$

~~SEE GENERAL NOTE (MISC. No. 7)~~

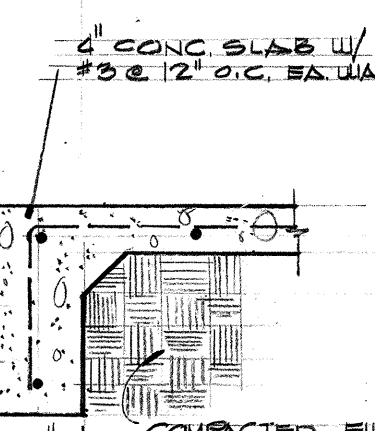
(NO FACING AROUND 3 SIDES OF FLAGPOLE WALL)



SIDEWALK DRAIN DETAIL (5) 1/2"=1'-0"



TOP OF WALL @ $\frac{A}{C1} \frac{B}{C1} \frac{C}{C1}$ $3\frac{1}{4}" \pm 1.0$
SEE GENERAL NOTE C.MISC. N- 7.)



CONC. PAD DET. (6) $\frac{3}{4}$ 1.0

3	10-19-67	REVISED BUILDING LOCATION			V.D.
2	6-27-67	REVISED SIDEWALK & STEPS			B.T.
1	8-15-67	REVISED DETAIL NOS. DETAILS ETC.			R.D.
REVISION	DATE		NOISE		BY

<p>DEPARTMENT OF THE INTERIOR</p> <p>BUREAU OF INDIAN AFFAIRS</p> <p>BRANCH OF PLANT DESIGN AND CONSTRUCTION</p> <p>ALBUQUERQUE, NEW MEXICO</p> <p>RALPH W. WIZE, CHIEF</p>		<p>PROJECT NO.</p>	
<p>MESCALERO HOSPITAL</p> <p>MESCALERO, NEW MEXICO</p>		<p>K56-PH 8</p>	
<p>DEPARTMENT OF</p> <p>HEALTH EDUCATION AND WELFARE</p> <p>PUBLIC HEALTH SERVICE</p> <p>BUREAU OF MEDICAL SERVICES</p> <p>DIVISION OF INDIAN HEALTH</p> <p>WASHINGTON 25, D. C.</p>		<p>SHEET NO.</p> <p>C-1</p> <p>OF 3 SHEETS</p>	
<p>PREPARED BY</p> <p>W. C. [Signature]</p> <p>10-1-36</p>	<p>TRACED BY</p> <p>[Signature]</p> <p>10-1-36</p>	<p>CHECKED BY</p> <p>[Signature]</p>	<p>DATE</p>
<p>SITE PLAN, SITE GRADING PLAN, SOIL BORING & DETAILS</p>			<p>DRAWING NO.</p> <p>SP-364</p>
<p>FERGUSON STEVENS MALLORY & PEARL</p> <p>ARCHITECTS</p> <p>ALBUQUERQUE</p>		<p>ENGINEERS</p> <p>NEW MEXICO</p>	