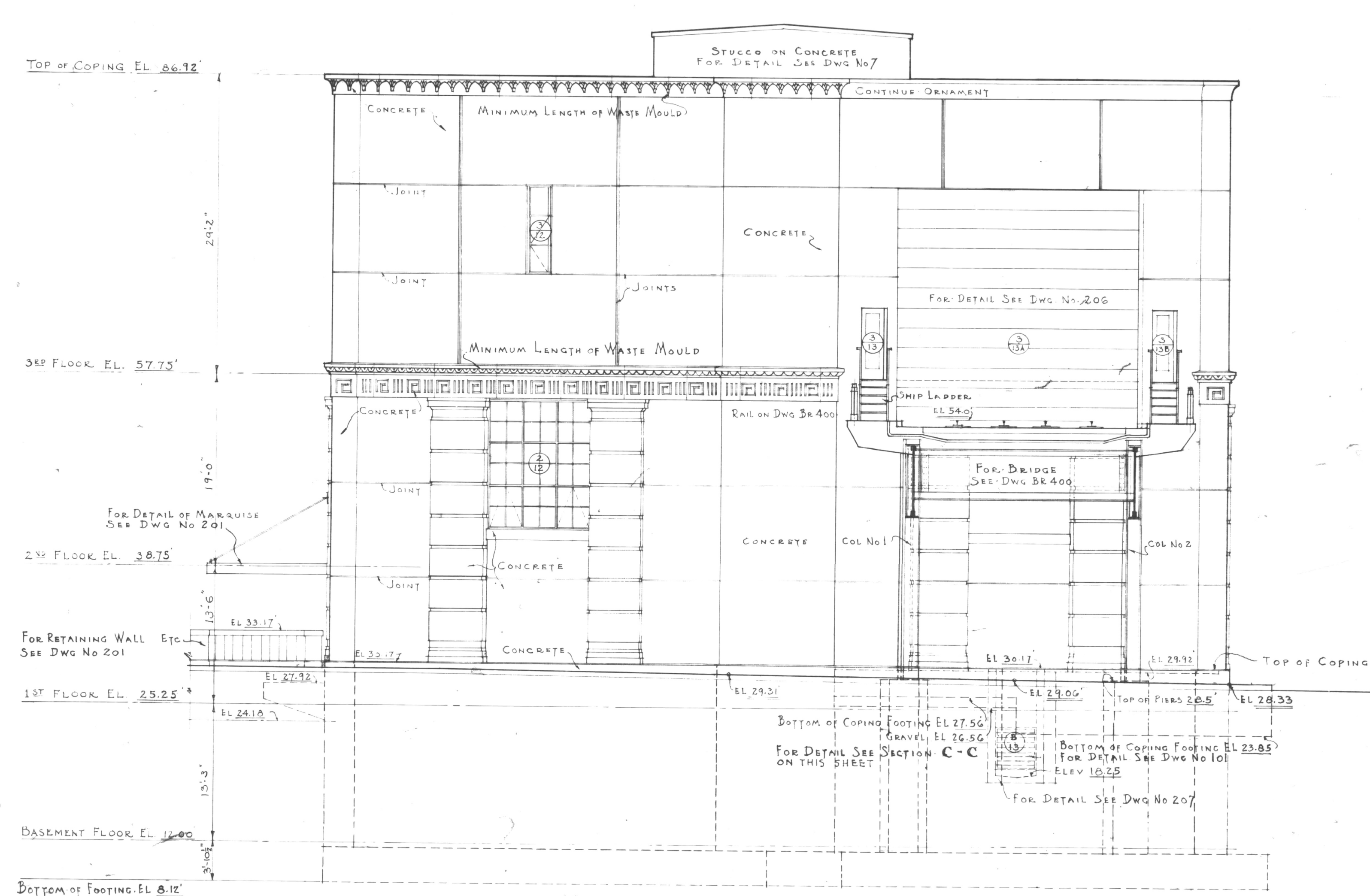


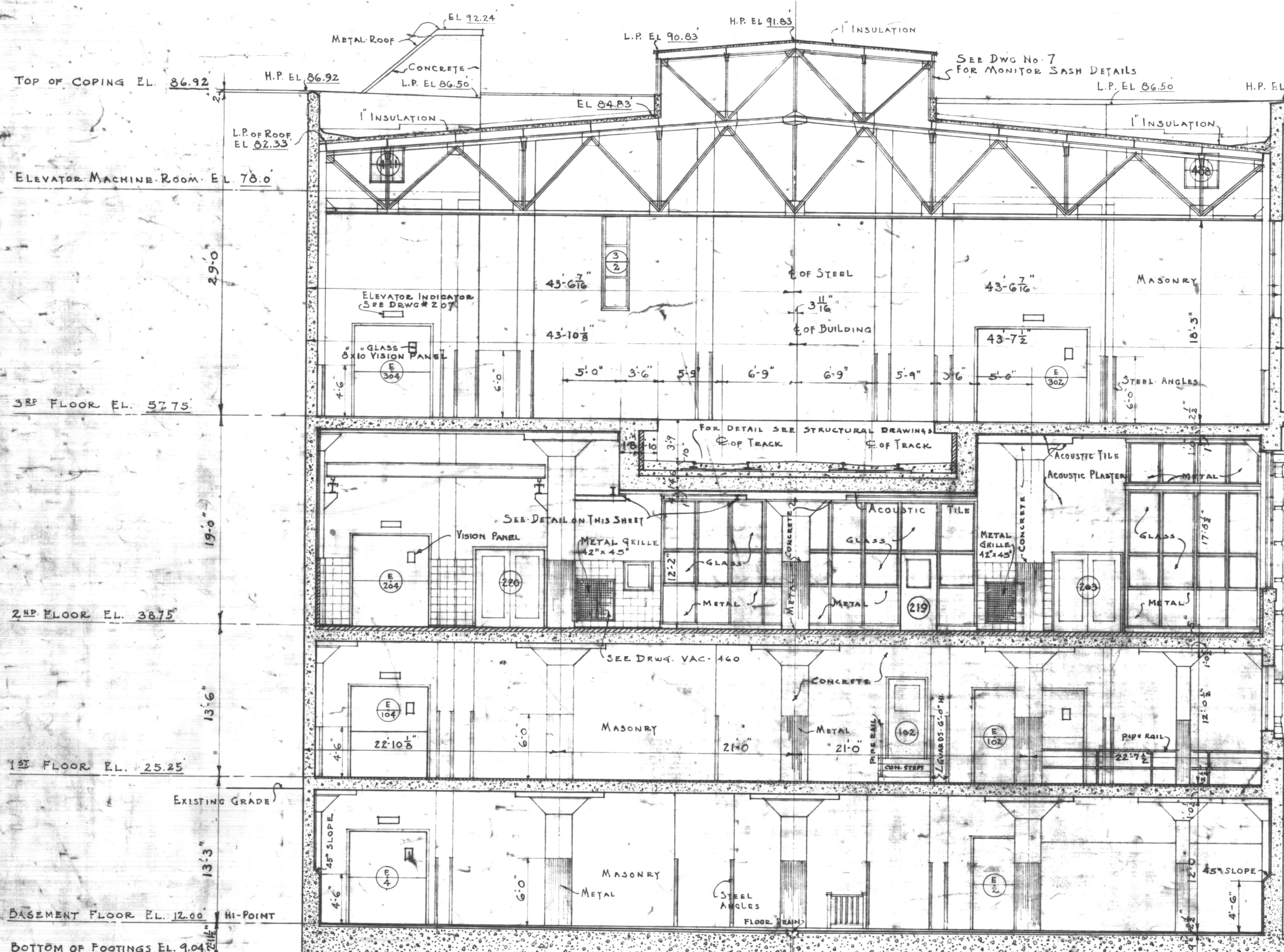
NOTE:  
FOR WINDOW SCHEDULES SEE DWG NO 200  
OBSCURE GLASS IN ALL TOILET WINDOWS  
ALL GLASS UNLESS OTHERWISE NOTED CLEAR GLASS

**NORTH CAPITOL ST. ELEVATION.**

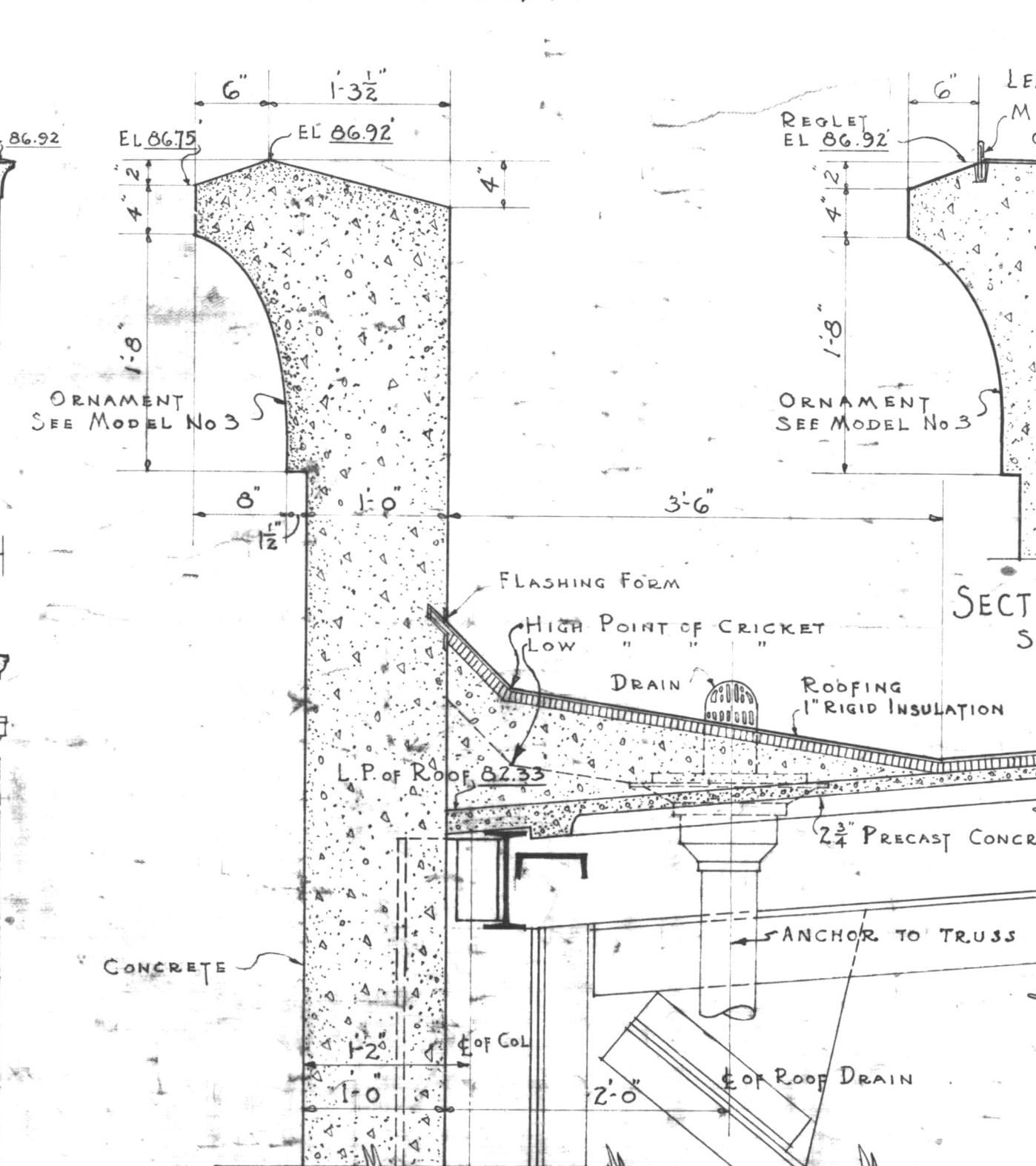


**FIRST STREET NE. ELEVATION**

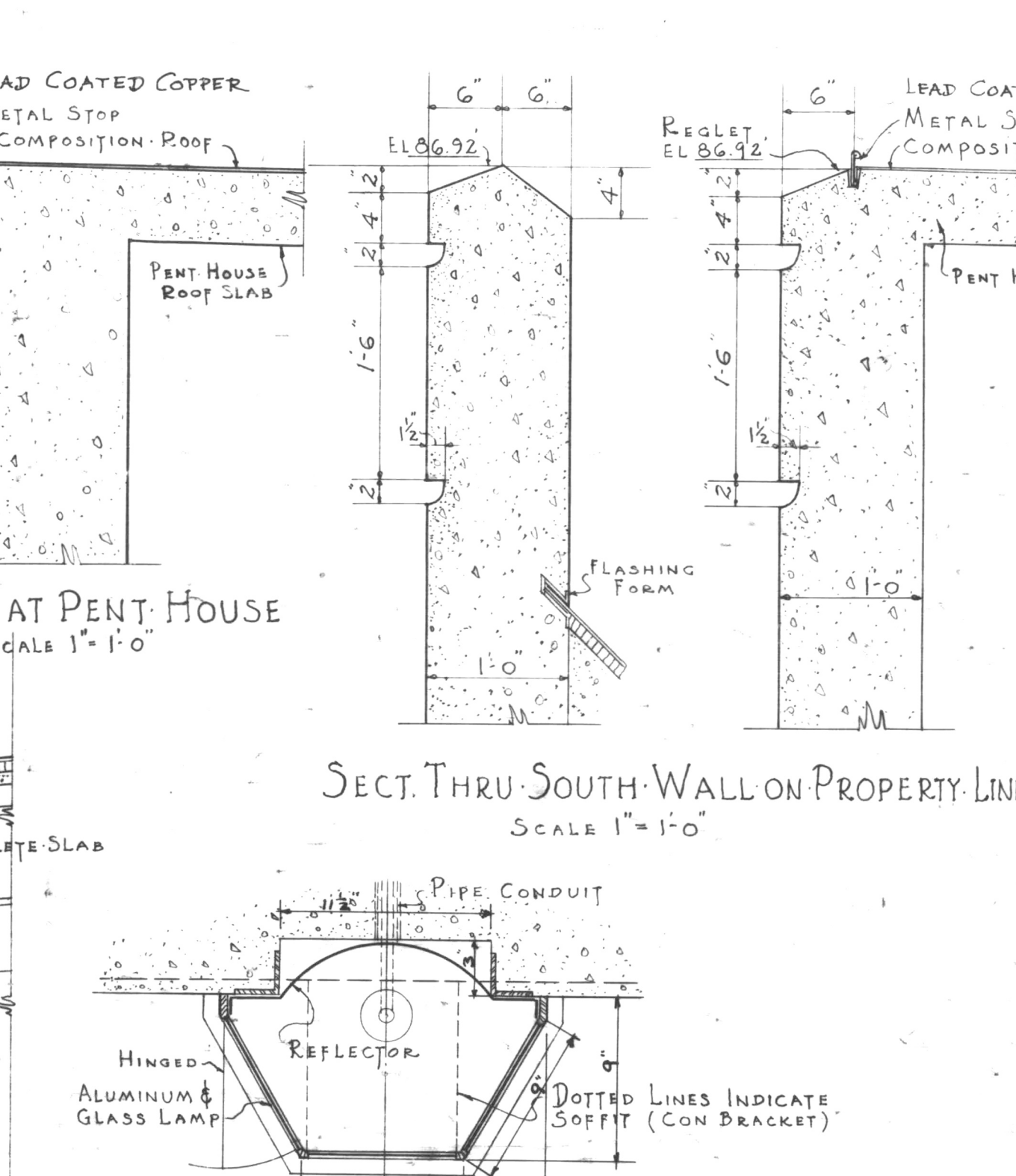
**SECTION C-C**  
SEE ELEVATIONS FOR HEIGHT



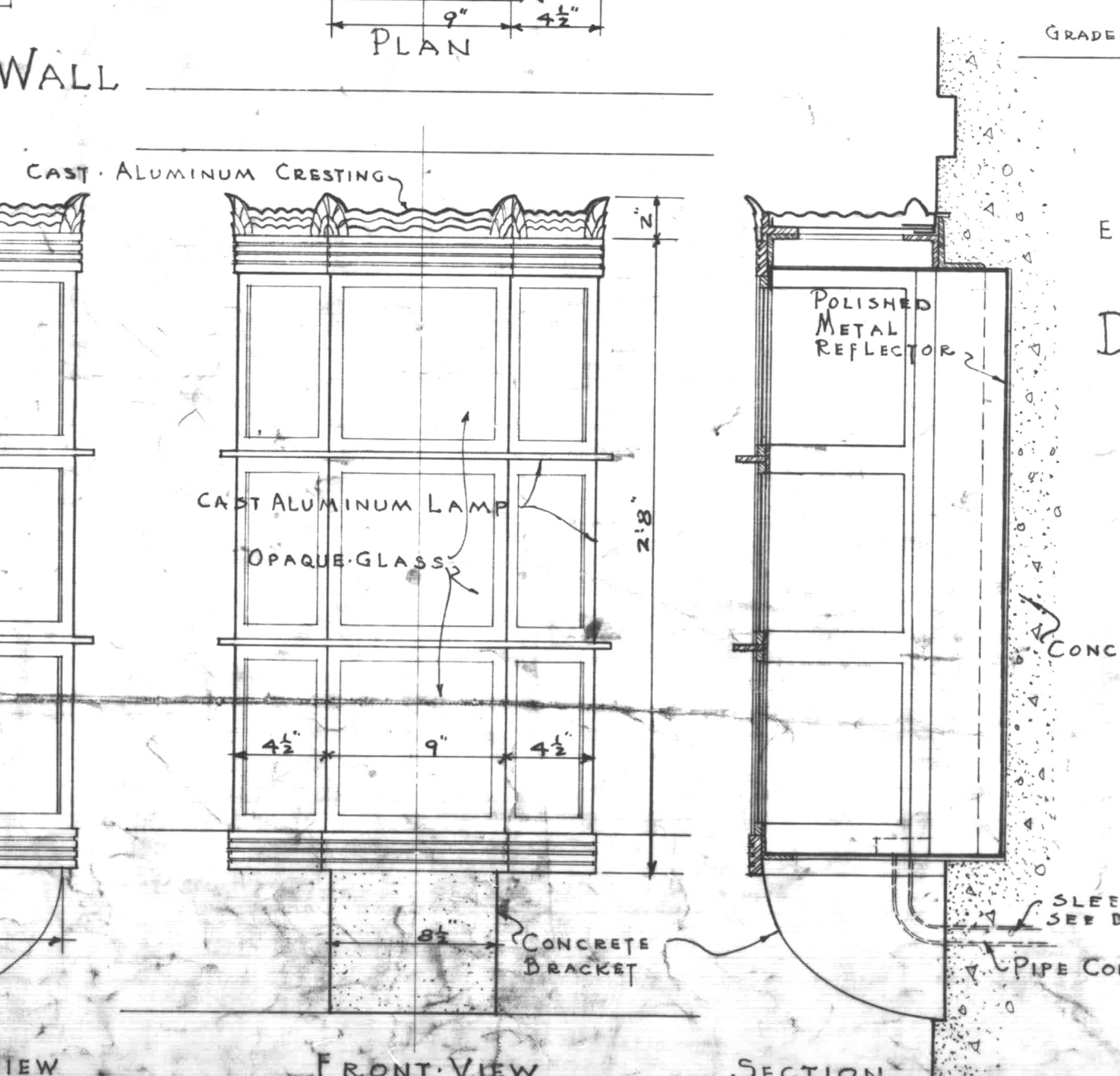
**TRANSVERSE SECTION TO WEST**  
THRU OPENINGS ① ② ③  
ON LINE A-A



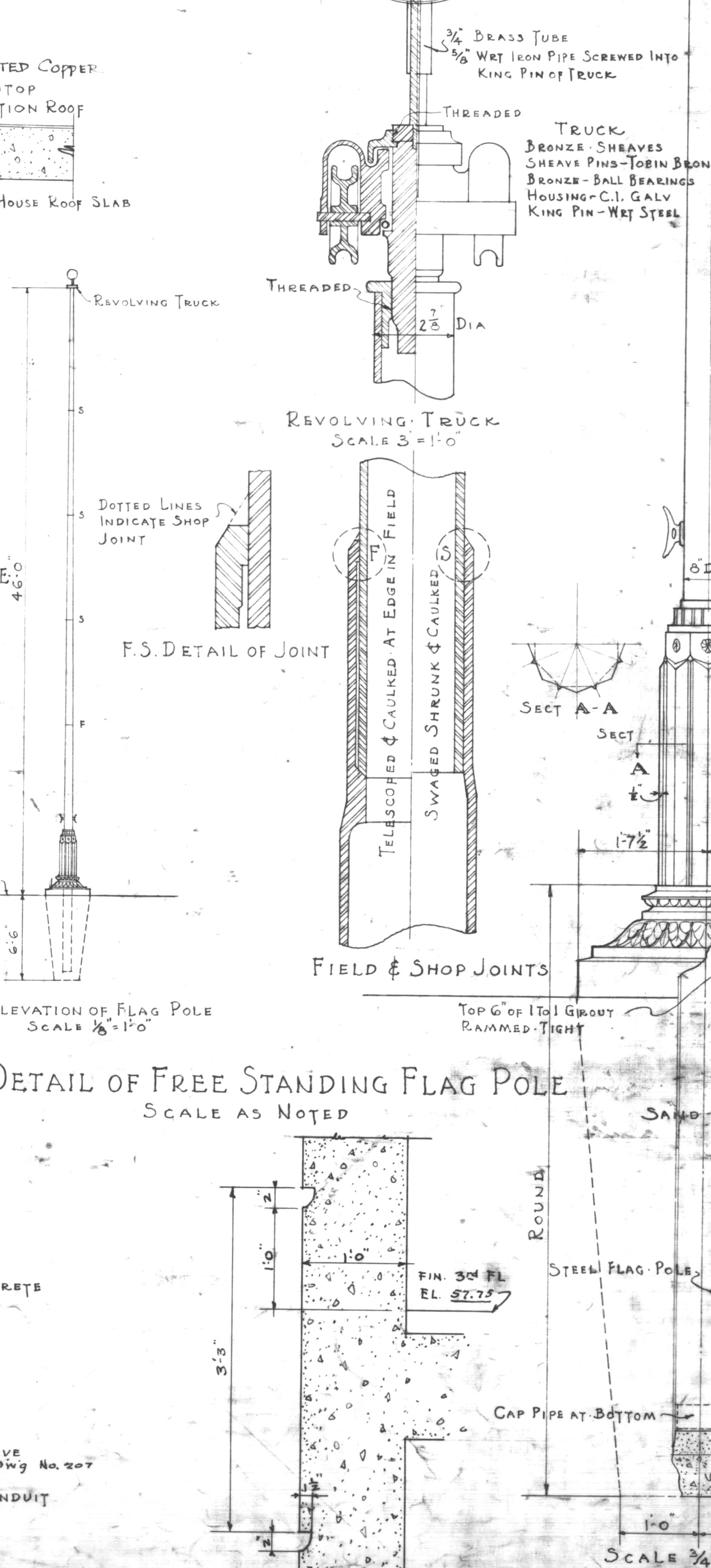
**TYPICAL SECTION THRU PARAPET WALL**



**SECT. THRU SOUTH WALL ON PROPERTY LINE**  
SCALE 1" = 1'-0"



**DETAIL OF METAL LAMPS AT MAIN ENTRANCE**  
SCALE 1 1/2" = 1'-0"



**DETAIL OF FREE STANDING FLAG POLE**  
SCALE AS NOTED

**SECT. THRU SOUTH WALL AT 3RD FLOOR**  
SCALE 1" = 1'-0"