



BEAVERHEAD - DEERLODGE NATIONAL FOREST
PINTLER RANGER DISTRICT
GRANITE COUNTY, MONTANA



PROJECT: 1-22241

DATE: APRIL 14, 2023

SHEET 1	COVER
SHEET 2	GENERAL NOTES AND LEGEND
SHEET 3	EXISTING SITE PLAN
SHEET 4	PROPOSED WATER DISTRIBUTION SYSTEM
SHEET 5	NORTH WATER LINE PLAN AND PROFILE
SHEET 6	SOUTH WATER LINE PLAN AND PROFILE
SHEET 7	CIVIL DETAILS
SHEET 8	CIVIL DETAILS
SHEET 9	CIVIL DETAILS - OFFICE WATER SERVICE
SHEET 10	CIVIL DETAILS - OFFICE WATER SERVICE PICTURES
SHEET 11	CIVIL DETAILS - GARAGE-SHOP WATER SERVICE
SHEET 12	CIVIL DETAILS - GARAGE-SHOP WATER SERVICE PICTURES
SHEET 13	CIVIL DETAILS - WAREHOUSE-GARAGE WATER SERVICE
SHEET 14	CIVIL DETAILS - WAREHOUSE-GARAGE WATER SERVICE PICTURES

RECOMMENDED BY:

PINTLER DISTRICT RANGER

DATE _____

RECOMMENDED BY:

FOREST ENGINEER

DATE _____

RECOMMENDED BY:

FOREST SUPERVISOR

DATE _____

APPROVED BY:

REGIONAL ENGINEER

DATE _____

PLANS PREPARED BY:

JOE STOLSKI, EI

QA/QC BY:

JOEL PILCHER, PE
MATTHEW MUDD, PE



NOTE:
DRAWING SCALE IS ONLY ACCURATE
WHEN PLANS ARE PLOTTED ON 11" X 17"
(TABLOID)-SIZED PAPER.

NO.	REVISION DESCRIPTION	BY	DATE	SET NO.
△				SHEET NO. 1
△				
△				
△				
△				
△				

Y:\Shared\Helena Projects\1-22241--B-D NF Philipsburg RS Water\CADD 1-22241\Sheets\1-22241-02-General Notes and Legend.dwg

ABBREVIATIONS

⊙	AT	LPG	LIQUID PROPANE GAS
Δ	ANGLE OF DEFLECTION, DELTA ANGLE	LT	LEFT
<PT	ANGLE POINT	MAX	MAXIMUM
AB	ANCHOR BOLT	MD	MEASURE DOWN
ABDN	ABANDON	MFD	MANUFACTURED
AC	ASBESTOS CONCRETE	MFR	MANUFACTURE, MANUFACTURER
ADDN	ADDITIONAL	MH	MANHOLE
ADJ	ADJACENT	MIN	MINIMUM
AFF	ABOVE FINISHED FLOOR	MISC	MISCELLANEOUS
ALT	ALTERNATE	MJ	MECHANICAL JOINT
ANSI	AMERICAN NATIONAL STANDARDS INSTITUTE	MOV	MOTOR OPERATED VALVE
APPROX	APPROXIMATE	MPWSS	MONTANA PUBLIC WORKS STANDARD SPECIFICATIONS
APVD	APPROVED	N	NORTH
ARCH	ARCHITECTURE, ARCHITECTURAL	NE	NORTHEAST
ASPH	ASPHALT	NG	NATURAL GAS
AVE	AVENUE	NIC	NOT IN CONTRACT
AVG	AVERAGE	NO	NUMBER
BFV	BUTTERFLY VALVE	NOM	NOMINAL
BLDG	BUILDING	NTS	NOT TO SCALE
BLK	BLOCK	NW	NORTHWEST
BLVD	BOULEVARD	OC	ON CENTER
BM	BEAM, BENCHMARK	OD	OUTSIDE DIAMETER
BOT	BOTTOM	OF	OVERFLOW
BRG	BEARING	OH	OVERHEAD
BRKT	BRACKET	OHP	OVERHEAD POWER
BVC	BEGIN VERTICAL CURVE	OHT	OVERHEAD TELEPHONE
C-C	CENTER TO CENTER	OPNG	OPENING
CHAN	CHANNEL	PC	POINT OF CURVATURE
CHK	CHECK	PCC	POINT OF COMPOUND CURVATURE
CI	CAST IRON	PE	PLAIN END, POLYETHYLENE
CIPC	CAST-IN-PLACE CONCRETE	PERP	PERPENDICULAR
CIRC	CIRCULAR	PI	POINT OF INTERSECTION
CJ	CONSTRUCTION JOINT, CONTROL JOINT	PL	PROPERTY LINE
CL	CENTER LINE	PNL	PANEL
CLR	CLEAR, CLEARANCE	PRC	POINT OF REVERSE CURVATURE
CMP	CORRUGATED METAL PIPE	PREFAB	PREFABRICATED
CMU	CONCRETE MASONRY UNITS	PRELIM	PRELIMINARY
CO	CLEANOUT	PREP	PREPARE, PREPARATION
COL	COLUMN	PROP	PROPERTY
CONC	CONCRETE	PRV	PRESSURE REDUCING VALVE
CONSTR	CONSTRUCTION	PSF	POUNDS PER SQUARE FOOT
CONT	CONTINUE, CONTINUED, CONTINUOUS	PSI	POUNDS PER SQUARE INCH
CONTR	CONTRACTOR	PT	POINT, POINT OF TANGENCY
COORD	COORDINATE	PVC	POLYVINYL CHLORIDE
CP	CONTROL PANEL, CONTROL POINT	PVI	POINT OF VERTICAL INTERSECTION
CPLG	COUPLING	PVMT	PAVEMENT
CTR	CENTER	R, RAD	RADIUS
CTV	CABLE TELEVISION	RC	REINFORCED CONCRETE
CU	CUBIC, COPPER	RCP	REINFORCED CONCRETE PIPE
CF	CUBIC FEET	RD	ROAD
CULV	CULVERT	RDCR	REDUCER
CY	CUBIC YARD	REBAR	REINFORCEMENT BAR
DET	DETAIL	REF	REFERENCE
DI	DUCTILE IRON, DRAIN INLET	REINF	REINFORCE
DIA, Ø	DIAMETER	REQD	REQUIRED
DIAG	DIAGONAL	RR	RAILROAD
DIM	DIMENSION	RST	REINFORCING STEEL
DR	DRIVE	RT	RIGHT
DWG	DRAWING	R/W	RIGHT-OF-WAY
E	EAST	S	SOUTH, SANITARY SEWER
EA	EACH	SAN	SANITARY
EL, ELEV	ELEVATION	SCH	SCHEDULE
ELB	ELBOW	SD	STORM DRAIN
ELEC	ELECTRIC, ELECTRICAL	SDWK	SIDEWALK
ENCL	ENCLOSE	SE	SOUTHEAST
ENGR	ENGINEER	SECT	SECTION
EOP	EDGE OF PAVEMENT	SF	SQUARE FOOT
EQ	EQUAL, EQUALLY	SHT	SHEET
EQ SP	EQUALLY SPACED	SIM	SIMILAR
EQUIP	EQUIPMENT	SLP	SLOPE
EQUIV	EQUIVALENT	SPEC	SPECIFICATION
EVC	END VERTICAL CURVE	SQ	SQUARE
EW	EACH WAY	SSTL	STAINLESS STEEL
EXC	EXCAVATE	STA	STATION
EXP	EXPANSION	SS	SANITARY SEWER SERVICE
EXP JT	EXPANSION JOINT	STD	STANDARD
EXST	EXISTING	ST	STREET
FCV	FLOW CONTROL VALVE	STL	STEEL
FD	FLOOR DRAIN	STRUCT	STRUCTURE
FDN	FOUNDATION	SW	SOUTHWEST
FES	FLARED END SECTION	SYM	SYMMETRICAL
FET	FLARED END TERMINAL	TB	THRUST BLOCK
FF	FINISHED FLOOR	TBC	TOP BACK OF CURB
FG	FINISH GRADE	TBM	TEMPORARY BENCH MARK
FHYD	FIRE HYDRANT	TEL	TELEPHONE
FJ	FLANGE JOINT	TEMP	TEMPORARY
FL	FLOW LINE	THRU	THROUGH
FLEX	FLEXIBLE	TYP	TYPICAL
FM	FORCEMAIN	UG	UNDERGROUND
FT	FOOT, FEET	UGP	UNDERGROUND POWER
FO	FIBER OPTIC	UGT	UNDERGROUND TELEPHONE
FTG	FOOTING, FITTING	UTIL	UTILITY
G	NATURAL GAS	V	VALVE, VOLT
GA	GAGE, GAUGE	VB	VALVE BOX
GAL	GALLON	VERT	VERTICAL
GALV	GALVANIZED	VOL	VOLUME
GND	GROUND	W	WEST, WATER
GVL	GRAVEL	WTR	WATER
HB	HOSE B/B	WD	WOOD
HDPE	HIGH DENSITY POLYETHYLENE	W/	WITH
HOR, HORIZ	HORIZONTAL	W/O	WITHOUT
HWY	HIGHWAY	WL	WETLAND
HYD	HYDRANT	WM	WIRE MESH
ID	INSIDE DIAMETER	WS	WATERSTOP, WATER METER
IE	INVERT ELEVATION	WT	WEIGHT
IN	INCH	WV	WATER VALVE
INV	INVERT	WWF	WELDED WIRE FABRIC
JB	JUNCTION BOX	WWM	WELDED WIRE MESH
JT	JOINT	XFMR	TRANSFORMER
K	RATE OF VERTICAL CURVATURE	X-ING	CROSSING
LBS	POUNDS	XS	CROSS SECTION
LF	LINEAR FEET	YD	YARD
LN	LANE		

LEGEND

EXISTING	PROPOSED	DESCRIPTION	EXISTING	PROPOSED	DESCRIPTION
-----	-----	MAJOR CONTOUR	⊙	⊙	STUMP
-----	-----	MINOR CONTOUR	☁	☁	SHRUB/BUSH
----- OHT -----	----- OHT -----	OVERHEAD TELEPHONE	☀	☀	TREE--CONIFER
----- UGT -----	----- UGT -----	UNDERGROUND TELEPHONE	☀	☀	TREE--DECIDUOUS
----- CTV -----	----- CTV -----	CABLE TELEVISION	~~~~~	~~~~~	TREE LINE
----- FO -----	----- FO -----	FIBER OPTIC	⊙	⊙	COMMUNICATION MANHOLE
----- G -----	----- G -----	NATURAL GAS	⊞	⊞	COMMUNICATION VAULT
----- OHP -----	----- OHP -----	OVERHEAD POWER	⊞	⊞	TELEPHONE RISER
----- UGP -----	----- UGP -----	UNDERGROUND POWER	⊞	⊞	CABLE TV RISER
----- S -----	----- S -----	SANITARY SEWER	⊞	⊞	NATURAL GAS METER
----- SS ----- SS -----	----- SS ----- SS -----	SANITARY SEWER SERVICE	⊞	⊞	NATURAL GAS RISER
----- FM -----	----- FM -----	SANITARY SEWER FORCEMAIN	⊞	⊞	NATURAL GAS VALVE
----- SD -----	----- SD -----	STORM DRAIN	⊞	⊞	LIGHT POLE
-----	-----	STORM CULVERT	⊞	⊞	STREET LIGHT POLE
----- W -----	----- W -----	WATER	⊞	⊞	POWER RISER
----- WS ----- WS ----- SW -----	----- WS ----- WS ----- SW -----	WATER SERVICE	⊞	⊞	PAD MOUNTED TRANSFORMER
----- X ----- X ----- X -----	----- X ----- X ----- X -----	CHAINLINK FENCE	⊞	⊞	POWER VAULT
-----	-----	BARBED WIRE FENCE	⊞	⊞	UTILITY POLE
-----	-----	WOOD FENCE	⊞	⊞	GUY WIRE
-----	-----	PAVED ROAD	⊞	⊞	SANITARY MANHOLE
-----	-----	GRAVEL ROAD	⊞	⊞	SANITARY CLEANOUT
-----	-----	PROPERTY/LOT LINE	⊞	⊞	SANITARY LAMPHOLE
-----	-----	PROPERTY EASEMENT	⊞	⊞	STORM MANHOLE
-----	-----	PROPERTY SETBACK	⊞	⊞	STORM ROUND INLET
-----	-----	RIGHT-OF-WAY	⊞	⊞	STORM SQUARE INLET
-----	-----	CITY LIMIT/DISTRICT BOUNDARY	⊞	⊞	STORM CATCH BASIN
-----	-----	RAILROAD	⊞	⊞	11.25' ELBOW
-----	-----	DITCH	⊞	⊞	22.50' ELBOW
-----	-----	WATER EDGE	⊞	⊞	45' ELBOW
-----	-----	WETLAND	⊞	⊞	90' ELBOW
-----	-----	BUILDING	⊞	⊞	TEE
-----	-----	BENCHMARK	⊞	⊞	CROSS
-----	-----	CONTROL POINT	⊞	⊞	CAP
-----	-----	PROPERTY PIN	⊞	⊞	FIRE HYDRANT
-----	-----	BORING	⊞	⊞	GATE VALVE
-----	-----	MONITORING WELL	⊞	⊞	REDUCER
-----	-----	TEST PIT	⊞	⊞	WATER METER
-----	-----	BOLLARD	⊞	⊞	WELL
-----	-----	MAIL BOX	⊞	⊞	CURB STOP
-----	-----	SIGN	⊞	⊞	FROST FREE HYDRANT

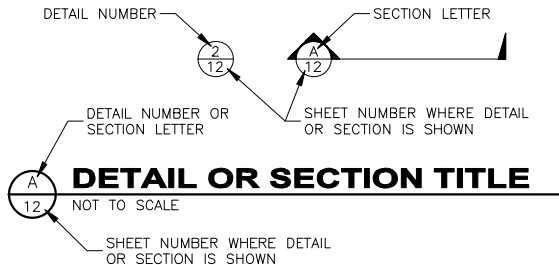
GENERAL NOTES:

- THIS IS A STANDARD LEGEND AND ABBREVIATION LIST. THEREFORE, NOT ALL SYMBOLS AND ABBREVIATIONS MAY BE USED ON THIS PROJECT.
- EXISTING UNDERGROUND UTILITIES SHOWN ARE FROM THE BEST INFORMATION AVAILABLE. THIS INFORMATION IS APPROXIMATE AND MAY BE INCOMPLETE. FOR ACCURATE LOCATION, THE CONTRACTOR SHALL CONTACT, PRIOR TO EXCAVATION, THE UTILITIES UNDERGROUND LOCATION CENTER AT: 1-800-424-5555.

PROJECT NOTES:

- ALL FIRE HYDRANTS, VALVES, CURB STOPS AND CURB BOXES TO BE MUELLER OR APPROVED EQUAL.
- ALL PAVED ROADWAY CROSSINGS TO BE INSTALLED THROUGH DIRECTIONAL DRILLING.
- EXISTING METER PITS AND METERS TO BE REMOVED, SALVAGED, AND RETURNED TO OWNER.
- EXISTING WATERLINES TO BE ABANDONED IN PLACE.

GENERAL DESIGN DESIGNATIONS:



BEAVERHEAD-DEERLODGE NATIONAL FOREST
PINTLER DISTRICT RANGER STATION
WATER DISTRIBUTION SYSTEM

GENERAL NOTES AND LEGEND

SHEET NO.

2

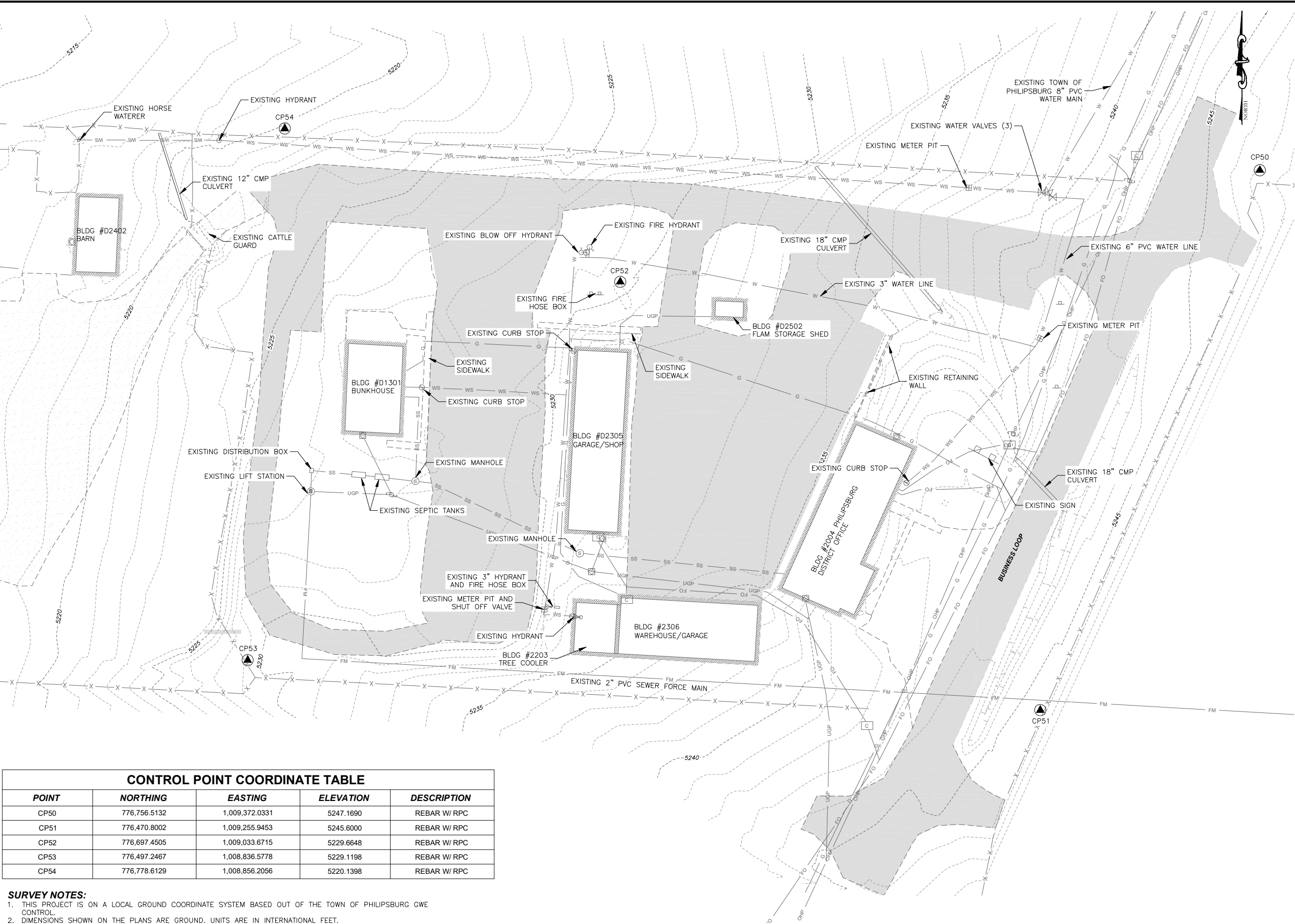
OF 14

NO.	REVISION DESCRIPTION	BY	DATE
1			
2			
3			
4			
5			

PROJECT: 1-22241	DESIGNED: JP	DRAWN: JS	CHECKED: JP	APPROVED: JP	DATE: APRIL 14, 2023
------------------	--------------	-----------	-------------	--------------	----------------------

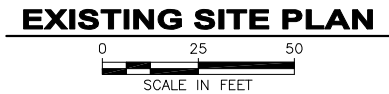


Y:\Shared\Helena Projects\1-22241-B-D NF Philipsburg RS Water\CADD 1-22241-Sheets\1-22241-03-Existing Site Plan.dwg



CONTROL POINT COORDINATE TABLE				
POINT	NORTHING	EASTING	ELEVATION	DESCRIPTION
CP50	776,756.5132	1,009,372.0331	5247.1690	REBAR W/ RPC
CP51	776,470.8002	1,009,255.9453	5245.6000	REBAR W/ RPC
CP52	776,697.4505	1,009,033.6715	5229.6648	REBAR W/ RPC
CP53	776,497.2467	1,008,836.5778	5229.1198	REBAR W/ RPC
CP54	776,778.6129	1,008,856.2056	5220.1398	REBAR W/ RPC

- SURVEY NOTES:**
- THIS PROJECT IS ON A LOCAL GROUND COORDINATE SYSTEM BASED OUT OF THE TOWN OF PHILIPSBURG GWE CONTROL.
 - DIMENSIONS SHOWN ON THE PLANS ARE GROUND. UNITS ARE IN INTERNATIONAL FEET.
 - RPC = RED PLASTIC CAP.



BEAVERHEAD-DEERLODGE NATIONAL FOREST
PINTLER DISTRICT RANGER STATION
WATER DISTRIBUTION SYSTEM
EXISTING SITE PLAN

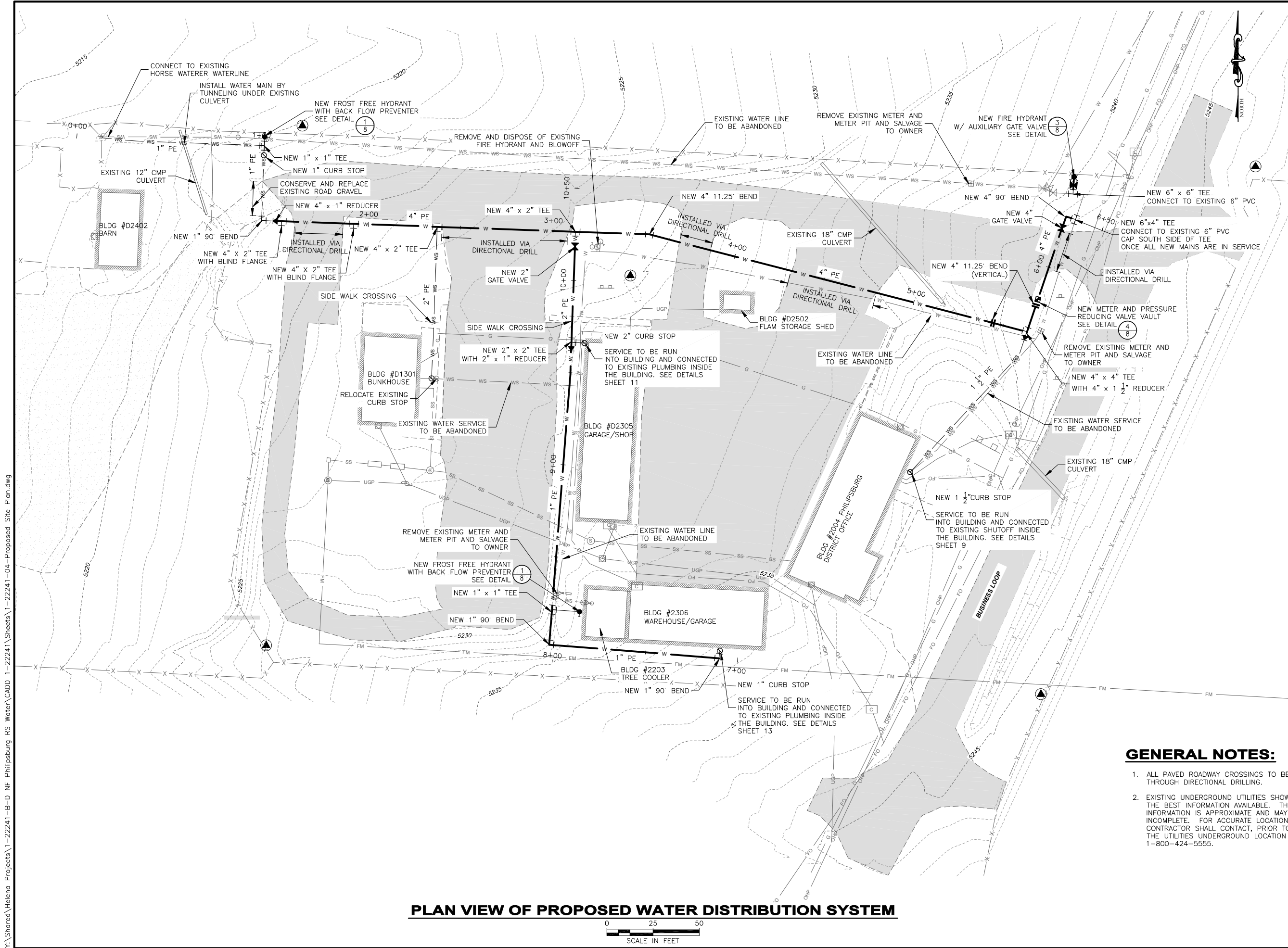
REVISION DESCRIPTION		BY	DATE
NO.			
1			
2			
3			
4			

PROJECT: 1-22241
DESIGNED: JP
DRAWN: JS
CHECKED: JP
APPROVED: JP
DATE: APRIL 14, 2023



SHEET NO.
3
OF 14

Y:\Shared\Helena Projects\1-22241-B-D NF Philipsburg RS Water\CADD\1-22241-04-Proposed Site Plan.dwg



GENERAL NOTES:

1. ALL PAVED ROADWAY CROSSINGS TO BE INSTALLED THROUGH DIRECTIONAL DRILLING.
2. EXISTING UNDERGROUND UTILITIES SHOWN ARE FROM THE BEST INFORMATION AVAILABLE. THIS INFORMATION IS APPROXIMATE AND MAY BE INCOMPLETE. FOR ACCURATE LOCATION, THE CONTRACTOR SHALL CONTACT, PRIOR TO EXCAVATION, THE UTILITIES UNDERGROUND LOCATION CENTER AT: 1-800-424-5555.

**BEAVERHEAD-DEERLODGE NATIONAL FOREST
PINTLER DISTRICT RANGER STATION
WATER DISTRIBUTION SYSTEM**

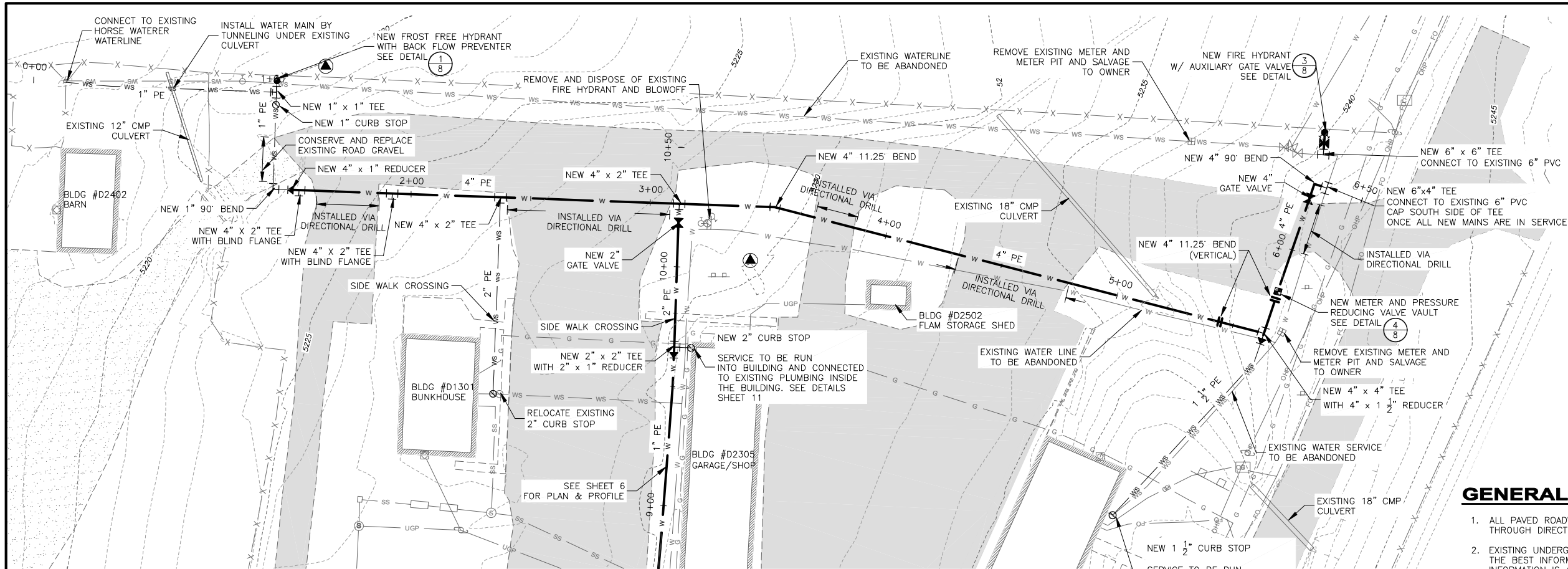
PROPOSED WATER DISTRIBUTION SYSTEM

SHEET NO.
4
OF 14

NO.	REVISION DESCRIPTION	BY	DATE
1			
2			
3			
4			



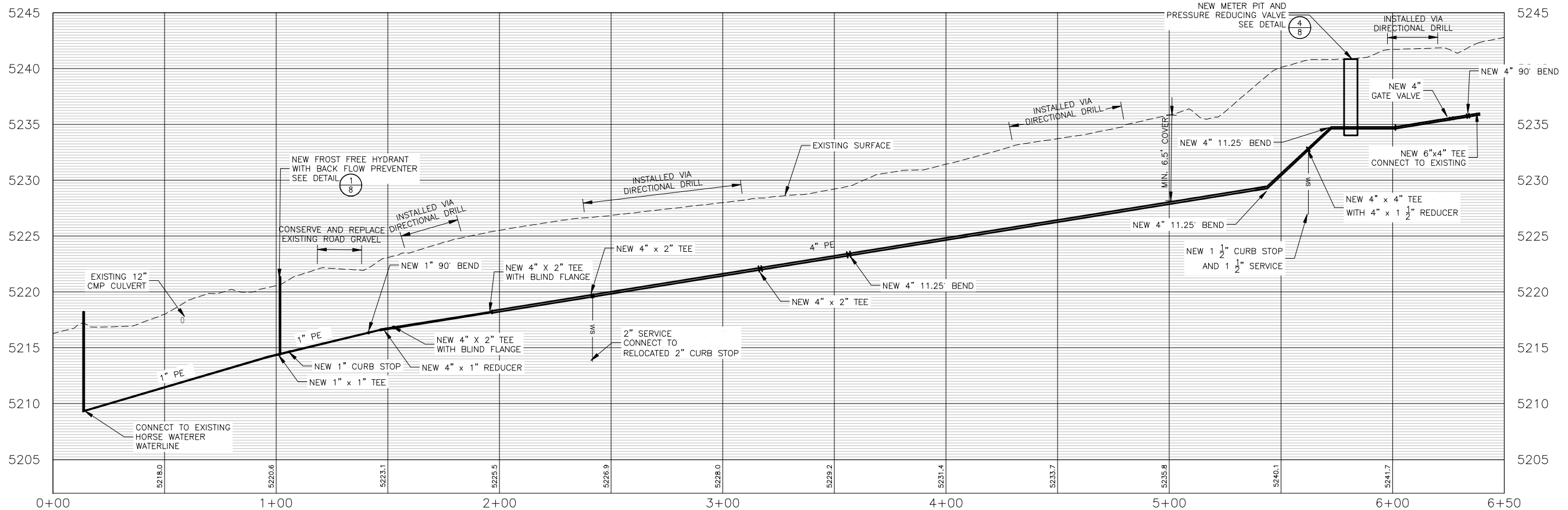
Y:\Shared\Helena Projects\1-22241-B-D NF Philipsburg RS Water\CADD 1-22241-Sheets\1-22241-05-North Water Line PP.dwg



PLAN VIEW OF NORTH WATER LINE ALIGNMENT - STA. 0+00 TO STA. 6+50

GENERAL NOTES:

1. ALL PAVED ROADWAY CROSSINGS TO BE INSTALLED THROUGH DIRECTIONAL DRILLING.
2. EXISTING UNDERGROUND UTILITIES SHOWN ARE FROM THE BEST INFORMATION AVAILABLE. THIS INFORMATION IS APPROXIMATE AND MAY BE INCOMPLETE. FOR ACCURATE LOCATION, THE CONTRACTOR SHALL CONTACT, PRIOR TO EXCAVATION, THE UTILITIES UNDERGROUND LOCATION CENTER AT: 1-800-424-5555.



PROFILE VIEW OF NORTH WATER LINE ALIGNMENT - STA. 0+00 TO STA. 6+50

HORIZONTAL SCALE: 1" = 50'
VERTICAL SCALE: 1" = 10'

NO.	REVISION DESCRIPTION	BY	DATE

PROJECT: 1-22241	DESIGNED: JP	DRAWN: JS	CHECKED: JP	APPROVED: JP	DATE: APRIL 14, 2023
------------------	--------------	-----------	-------------	--------------	----------------------



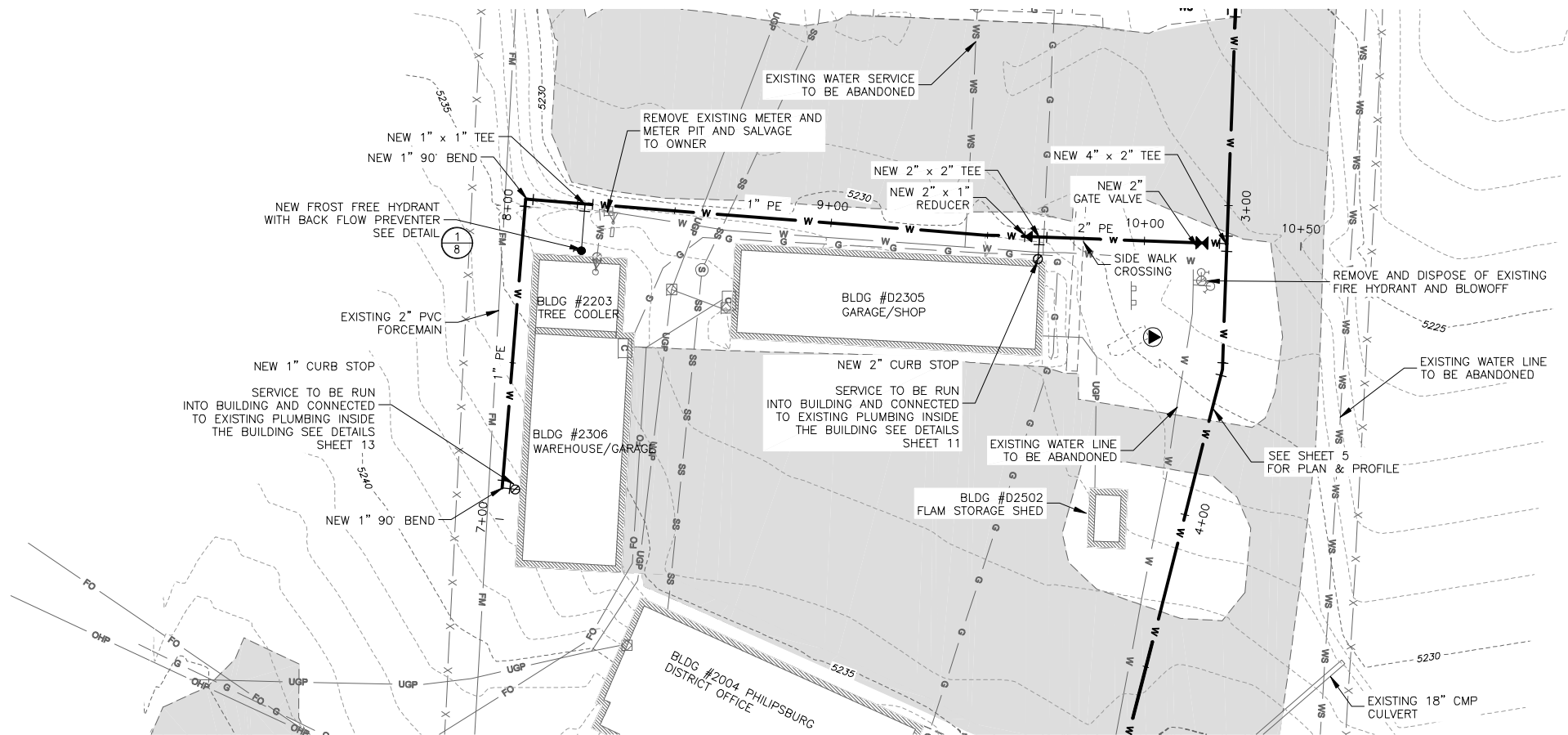
BEAVERHEAD-DEERLodge NATIONAL FOREST
PINTLER DISTRICT RANGER STATION
WATER DISTRIBUTION SYSTEM
NORTH WATER LINE PLAN AND PROFILE

SHEET NO.

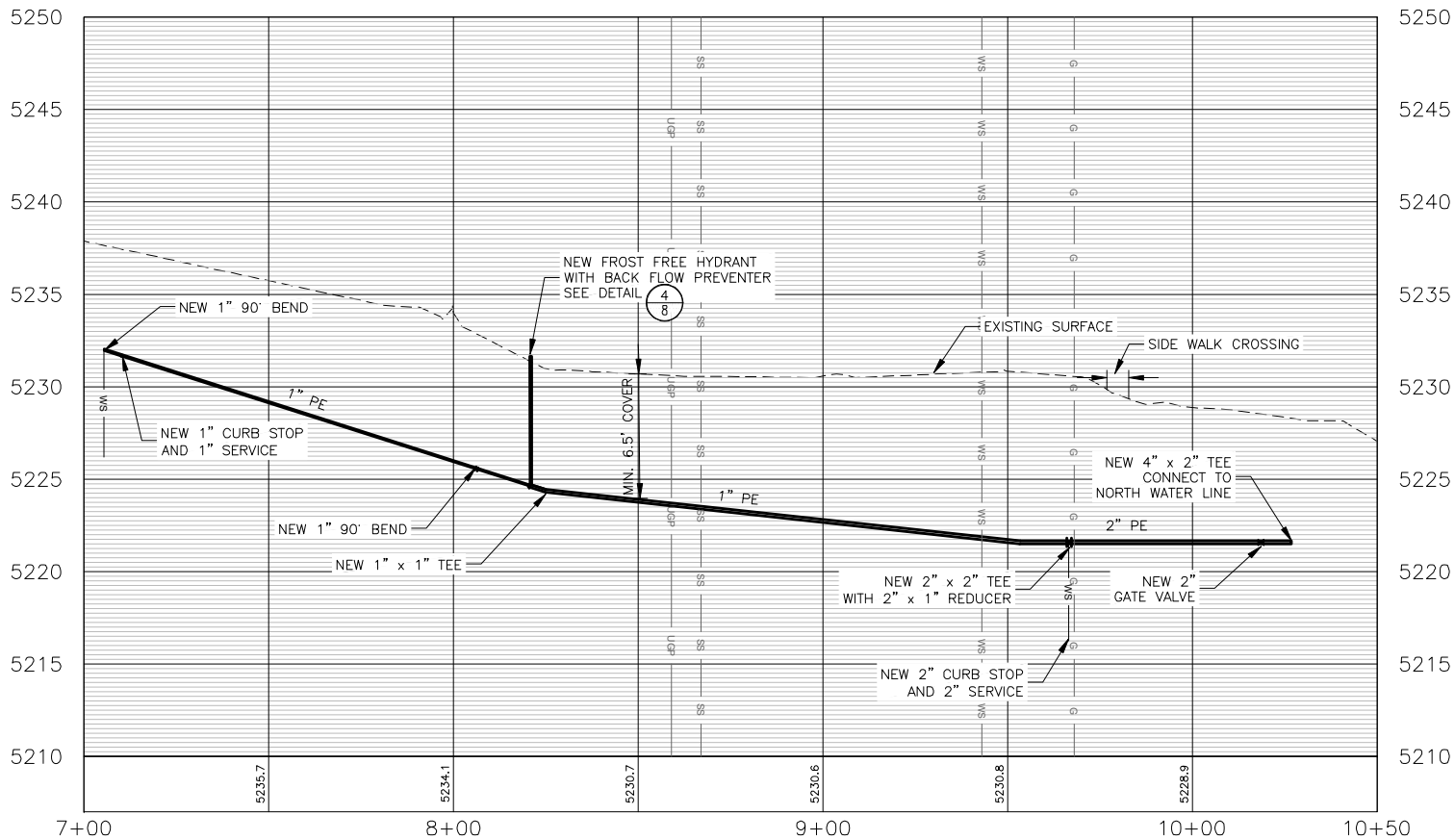
5

OF 14

Y:\Shared\Helena Projects\1-22241-B-D NF Philipsburg RS Water\CADD 1-22241-Sheets\1-22241-06-South Water Line PP.dwg



PLAN VIEW OF SOUTH WATER LINE ALIGNMENT - STA. 7+00 TO STA. 10+50



PROFILE VIEW OF SOUTH WATER LINE ALIGNMENT - STA. 7+00 TO STA. 10+50

HORIZONTAL SCALE: 1" = 50'
VERTICAL SCALE: 1" = 10'

GENERAL NOTES:

1. ALL PAVED ROADWAY CROSSINGS TO BE INSTALLED THROUGH DIRECTIONAL DRILLING.
2. EXISTING UNDERGROUND UTILITIES SHOWN ARE FROM THE BEST INFORMATION AVAILABLE. THIS INFORMATION IS APPROXIMATE AND MAY BE INCOMPLETE. FOR ACCURATE LOCATION, THE CONTRACTOR SHALL CONTACT, PRIOR TO EXCAVATION, THE UTILITIES UNDERGROUND LOCATION CENTER AT: 1-800-424-5555.

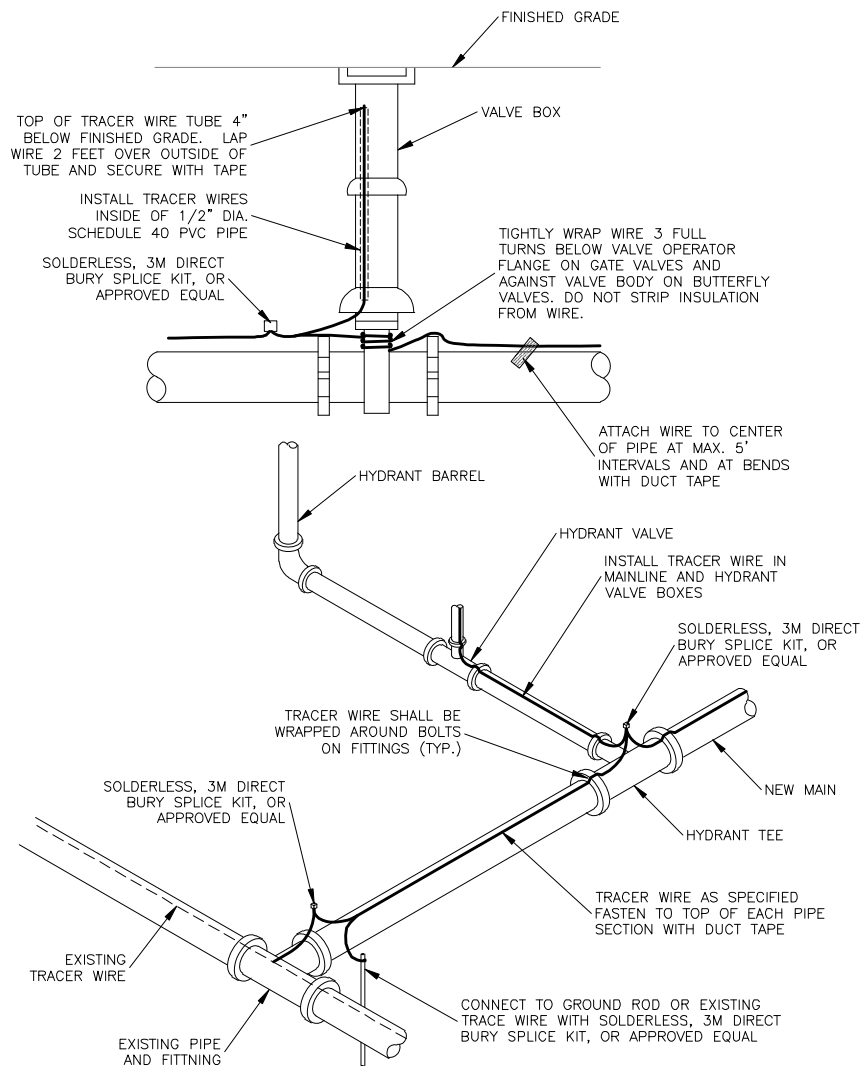
NO.	REVISION DESCRIPTION	BY	DATE
1			
2			
3			
4			

PROJECT: 1-22241
DESIGNED: JP
DRAWN: JS
CHECKED: JP
APPROVED: JP
DATE: APRIL 14, 2023



BEAVERHEAD-DEERLODGE NATIONAL FOREST
PINTLER DISTRICT RANGER STATION
WATER DISTRIBUTION SYSTEM
SOUTH WATER LINE PLAN AND PROFILE

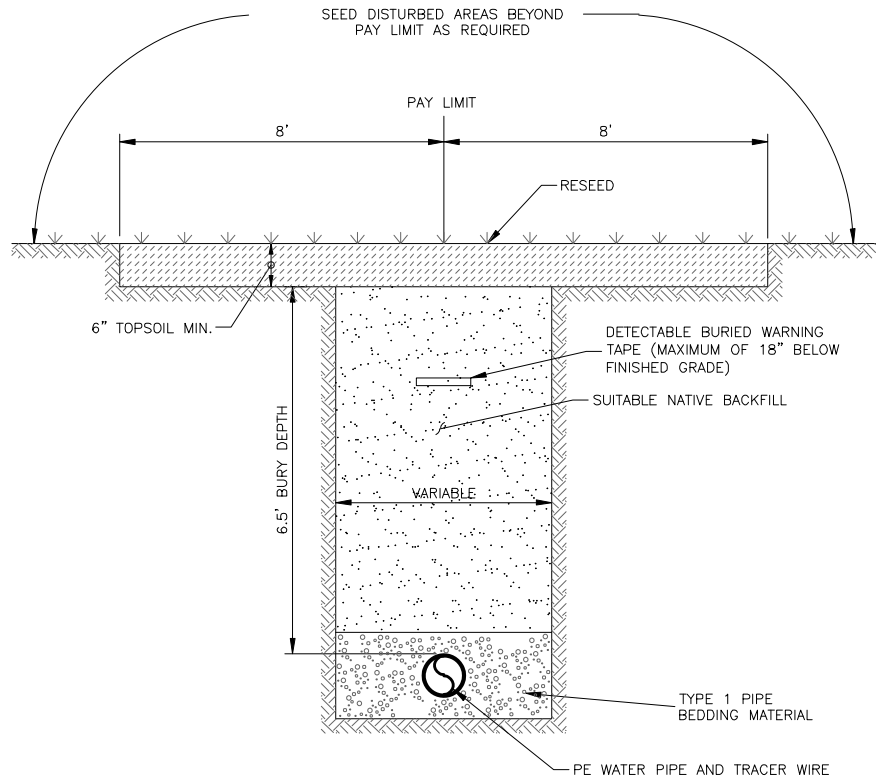
Y:\Shared\Helena Projects\1-22241-B-D NF Philipsburg RS Water\CADD 1-22241-Sheets\1-22241-07 Civil Details.dwg



- NOTES:
1. TRACER WIRE SHALL TERMINATE INSIDE VALVE BOX WITH ENOUGH SLACK TO REACH 2' ABOVE GROUND SURFACE.
 2. ALL WIRE AND CABLE SHALL BE JACKETED #14 COPPER WIRE.
 3. ALL SPliced OR REPAIRED WIRE CONNECTIONS IN THE TRACER WIRE SYSTEM SHALL BE MADE USING SOLDERLESS, 3M DIRECT BURY SPLICE KIT, OR APPROVED EQUAL.
 4. NO SPLICES ALLOWED FOR WIRE LENGTHS LESS THAN 500 FEET.

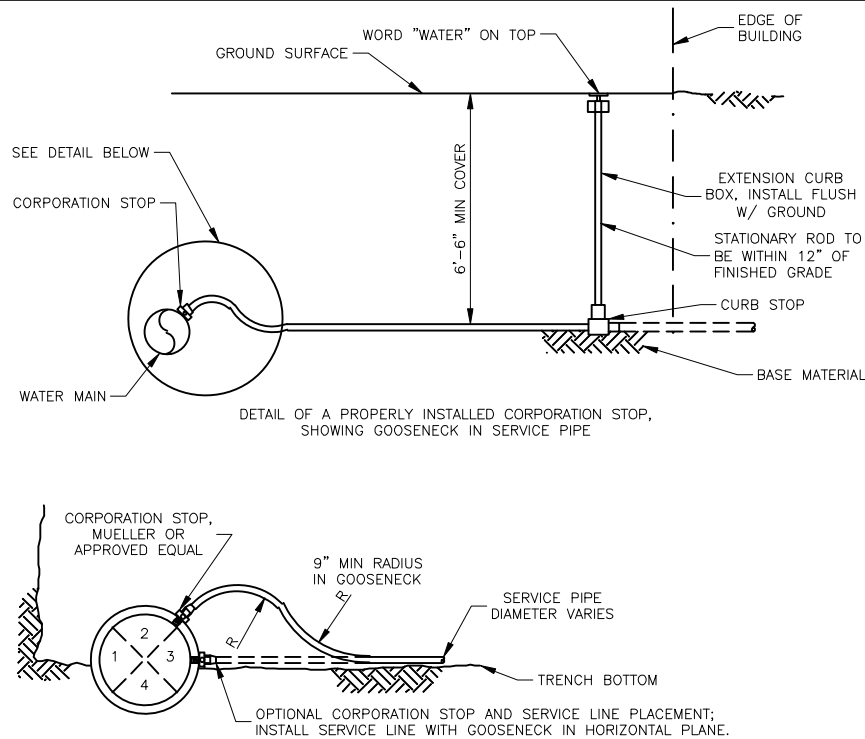
1
7
NOT TO SCALE

TRACER WIRE DETAIL



2
7
NOT TO SCALE

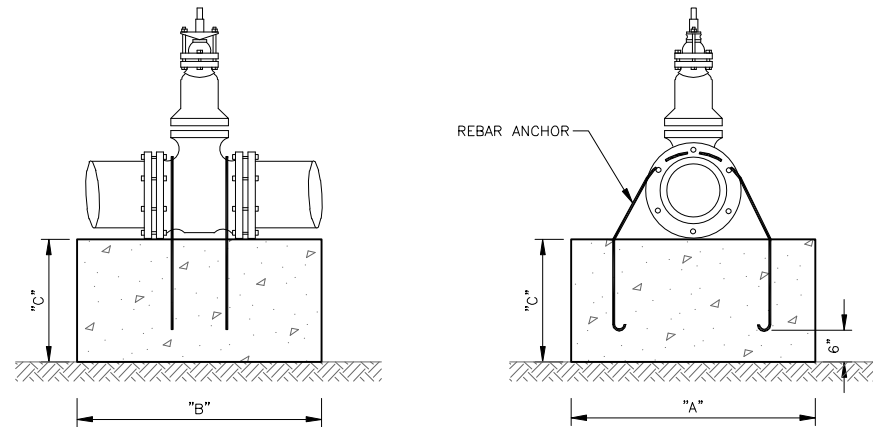
TYPICAL UTILITY TRENCH WITH TYPE "C" SURFACE RESTORATION



4
7
NOT TO SCALE

WATER SERVICE DETAIL

- NOTES:
1. WATER SERVICE LINES AND NEW CURB BOXES SHALL BE INSTALLED ONLY AS SHOWN ON THE DRAWINGS OR AS SPECIFIED.
 2. BEDDING SHALL BE 3/4" DIAMETER WITHIN 6 INCHES OF SERVICE PIPE.
 3. PROVIDE NEW SERVICE LINE ENTIRE LENGTH TO CURB STOP.
 4. ALL CURB STOPS TO BE LOCATED WITHIN 5' OF BUILDING.



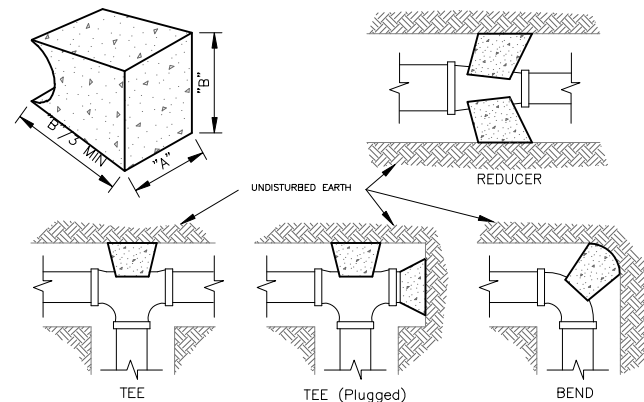
STANDARD THRUST BLOCK DIMENSIONS

ANCHOR ROD SIZE	VALVE SIZE	150 PSI		
		"A"	"B"	"C"
3/4"	4"	2'-0"	2'-0"	2'-0"
3/4"	6"	2'-0"	2'-0"	2'-0"
3/4"	8"	2'-0"	2'-0"	2'-0"
3/4"	10"	2'-6"	2'-6"	2'-0"
3/4"	12"	3'-0"	3'-0"	2'-8"

- NOTES:
1. COAT RODS WITH "KOPPERS" BITUMASTIC NO. 50 COATING OR EQUIVALENT.
 2. PRESSURES SHOWN IN TABLE ARE MAXIMUM OPERATING PRESSURES IN SYSTEM.
 3. CONCRETE COMPRESSIVE STRENGTH TO BE 3,000 PSI

3
7
NOT TO SCALE

THRUST BLOCKING FOR VALVES



FITTING SIZES	STANDARD DIMENSIONS FOR THRUST BLOCKING							
	TEES & PLUGS		90° BEND		45° BEND & WYES		REDUCERS & 22 1/2° BEND	
	A	B	A	B	A	B	A	B
4"	1'-7"	1'-2"	1'-9"	1'-6"	1'-8"	0'-10"	1'-7"	0'-6"
6"	2'-0"	1'-11"	2'-5"	2'-2"	1'-10"	1'-7"	1'-9"	0'-10"
8"	2'-8"	2'-6"	3'-2"	3'-0"	2'-5"	2'-1"	1'-9"	1'-6"
10"	3'-4"	3'-3"	4'-0"	3'-10"	3'-0"	2'-9"	2'-2"	1'-11"
12"	4'-0"	3'-10"	4'-8"	4'-8"	3'-8"	3'-3"	2'-7"	2'-3"

- NOTES:
1. TABLES BASED UPON 150 PSI MAIN PRESSURE AND 2,000 PSF SOIL BEARING PRESSURE.
 2. WRAP ALL FITTINGS WITH POLYETHYLENE.
 3. CONCRETE COMPRESSIVE STRENGTH TO BE 3,000 PSI

5
7
NOT TO SCALE

THRUST BLOCKING FOR FITTINGS

BEAVERHEAD-DEERLodge NATIONAL FOREST
PINTLER DISTRICT RANGER STATION
WATER DISTRIBUTION SYSTEM

CIVIL DETAILS

SHEET NO.

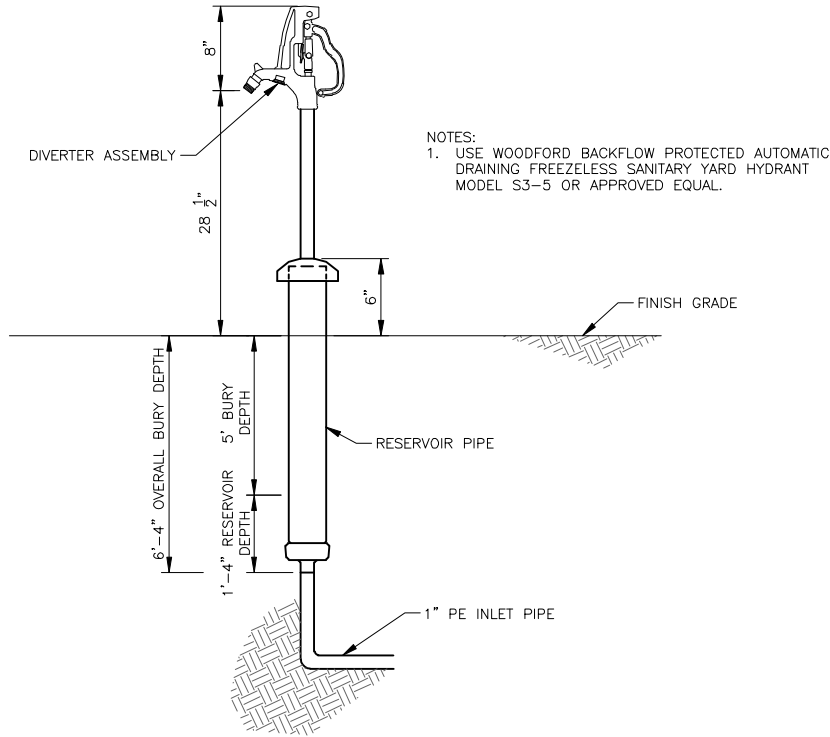
7

OF 14

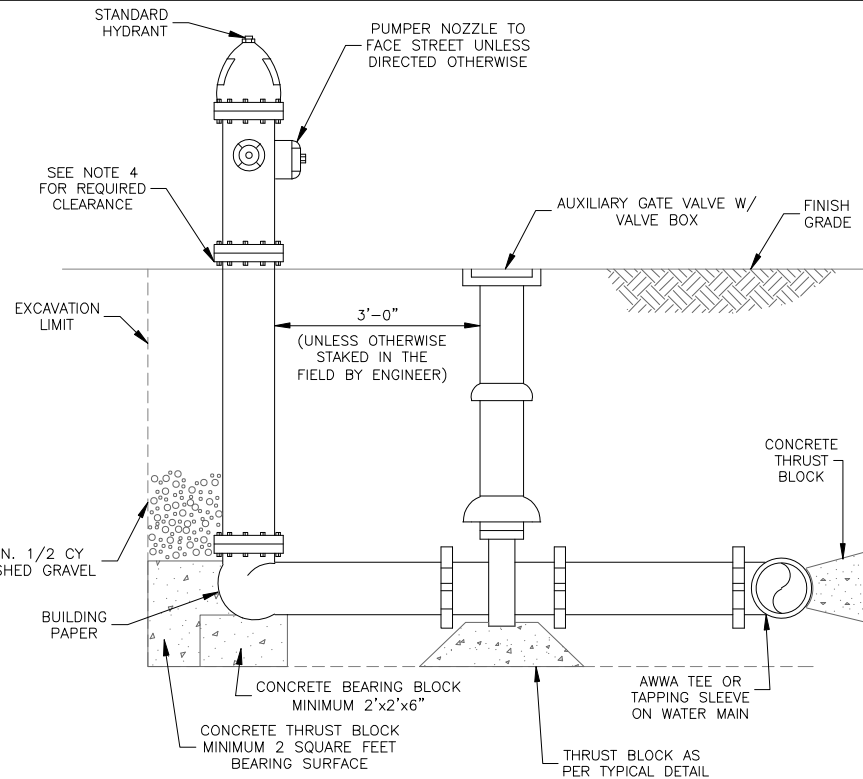
NO.	REVISION DESCRIPTION	BY	DATE
1			
2			
3			
4			
5			

PROJECT: 1-22241	DESIGNED: JP	DRAWN: JS	CHECKED: JP	APPROVED: JP	DATE: APRIL 14, 2023
------------------	--------------	-----------	-------------	--------------	----------------------

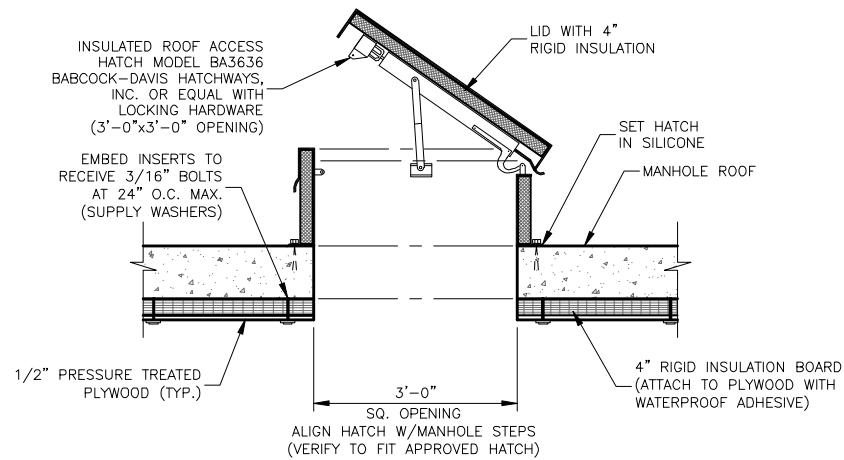




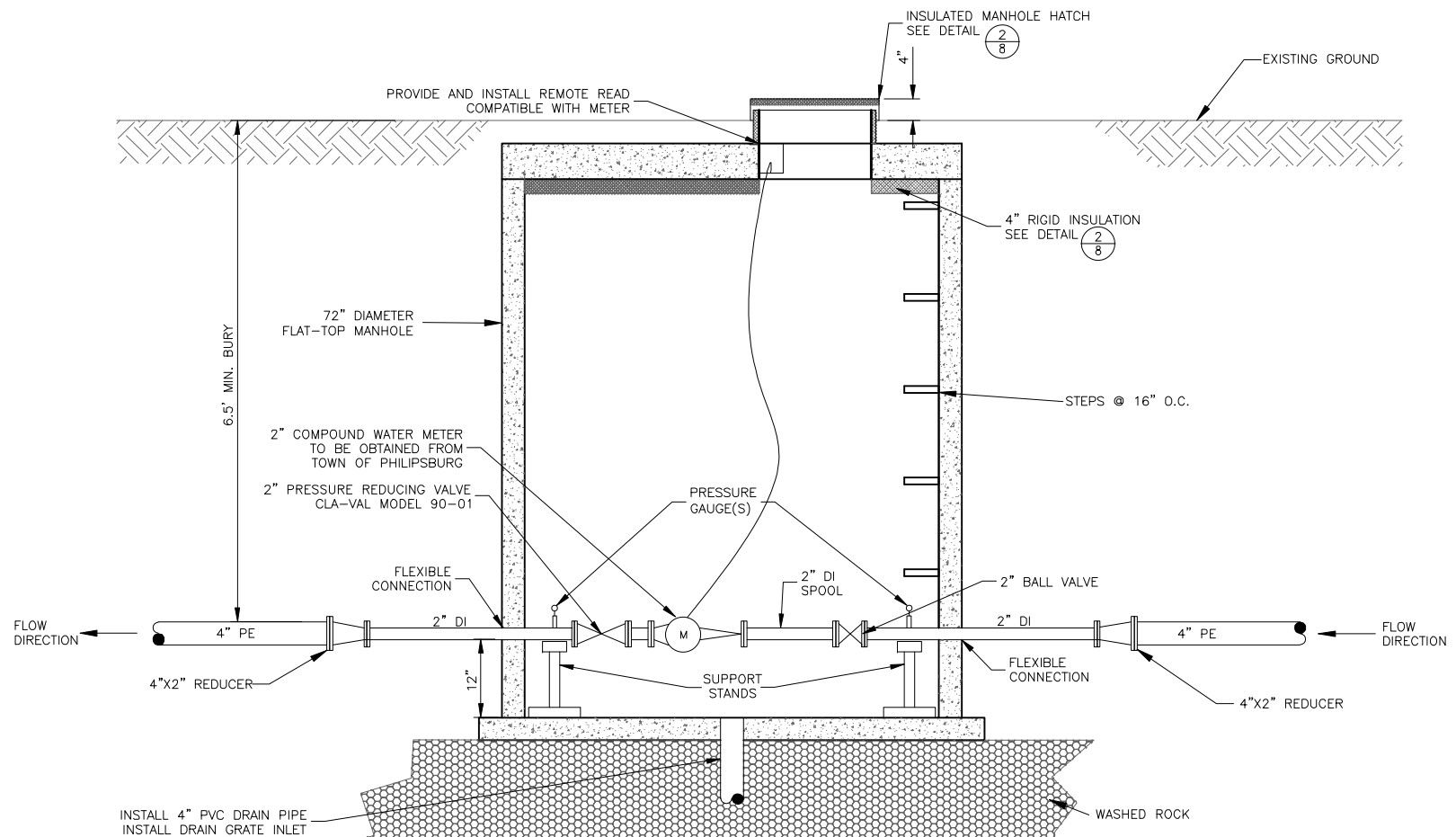
1 FROST FREE HYDRANT W/ BACKFLOW PREVENTER DETAIL
8 NO SCALE



3 FIRE HYDRANT DETAIL
8 NOT TO SCALE



2 INSULATED VAULT HATCH DETAIL
8 NOT TO SCALE



4 WATER METER AND PRESSURE REDUCING VALVE VAULT
8 NOT TO SCALE

NO.	REVISION DESCRIPTION	BY	DATE
1			
2			
3			
4			
5			

PROJECT: 1-22241	DESIGNED: JP	DRAWN: JS	CHECKED: JP	APPROVED: JP	DATE: APRIL 14, 2023
------------------	--------------	-----------	-------------	--------------	----------------------



**BEAVERHEAD-DEERLODGE NATIONAL FOREST
PINTLER DISTRICT RANGER STATION
WATER DISTRIBUTION SYSTEM**

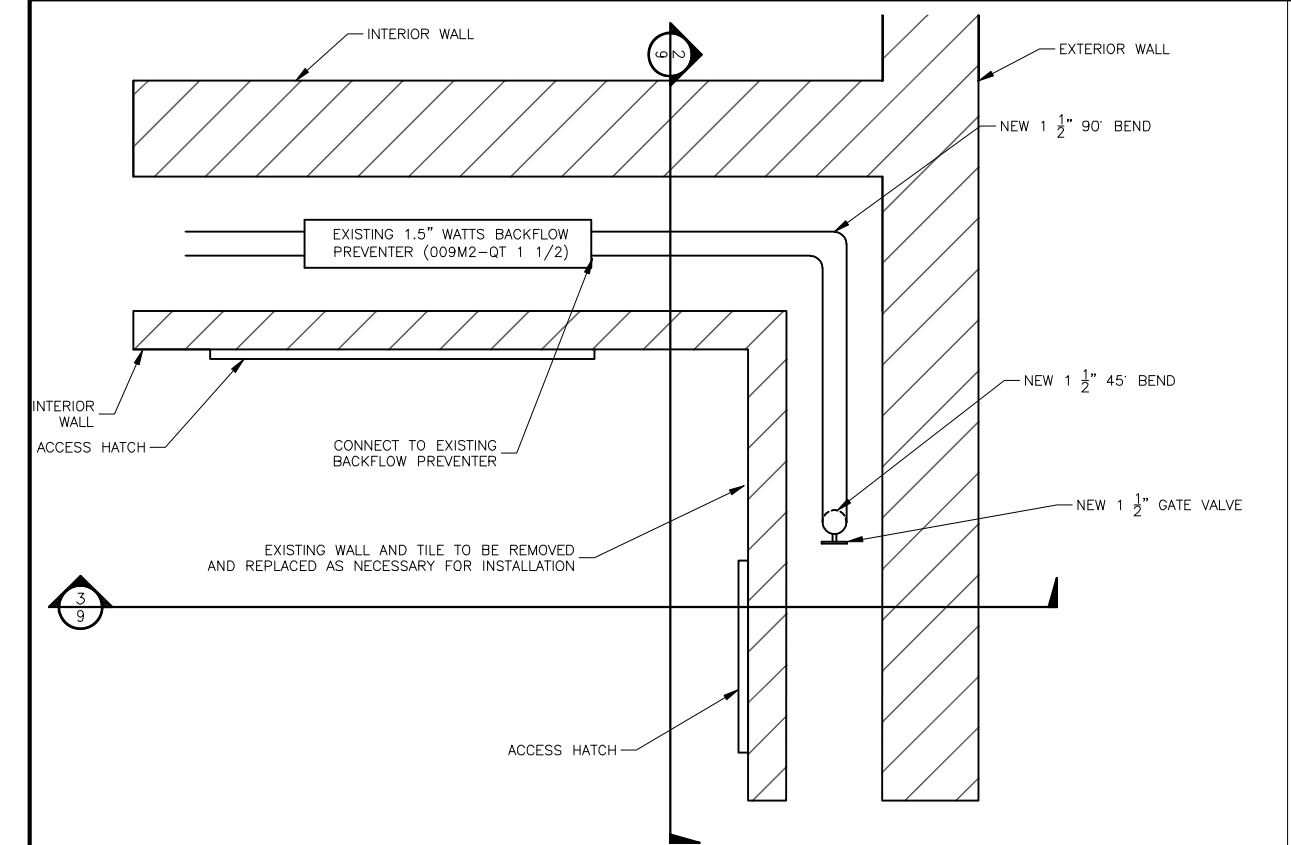
CIVIL DETAILS

SHEET NO.

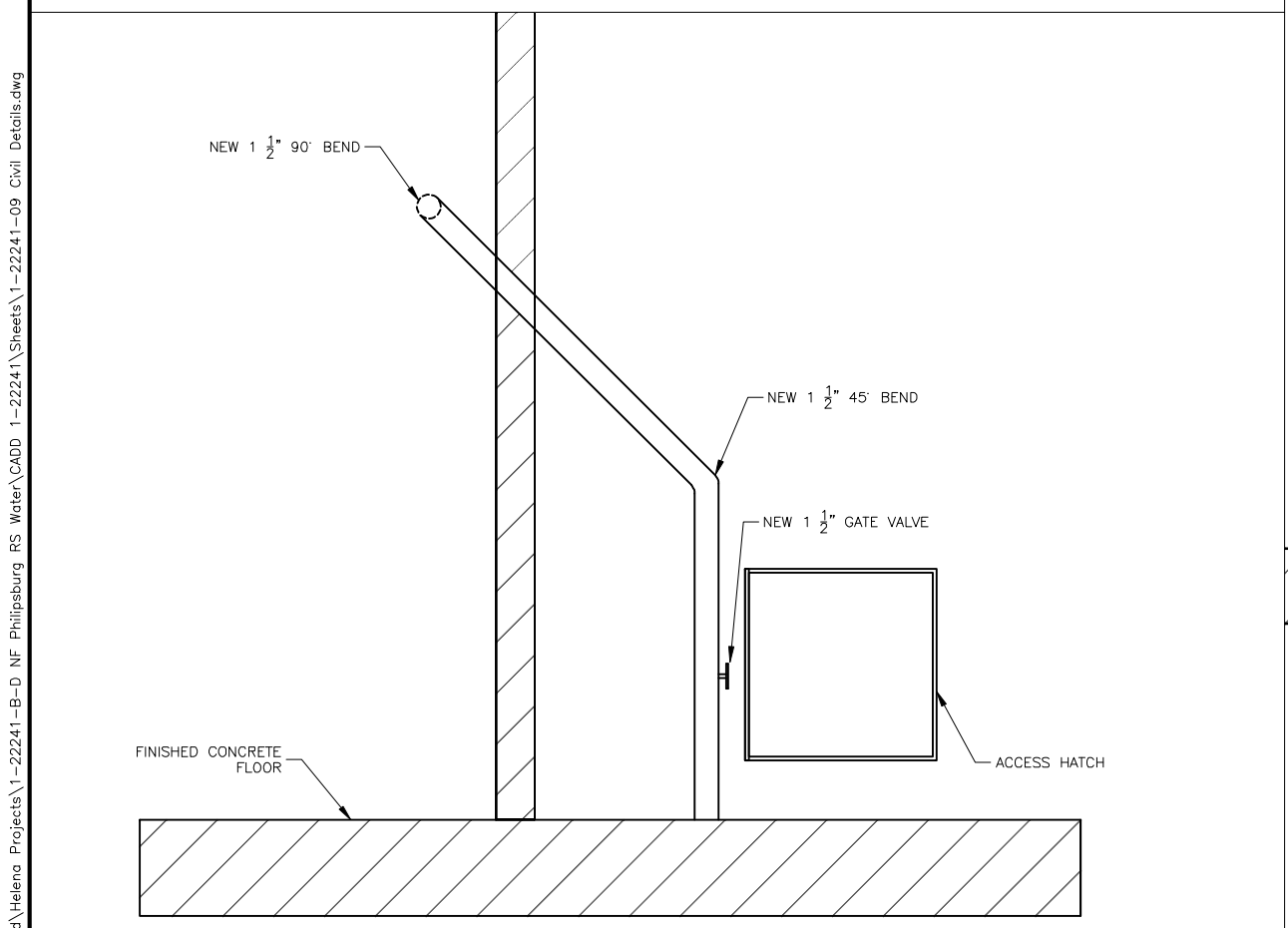
8

OF 14

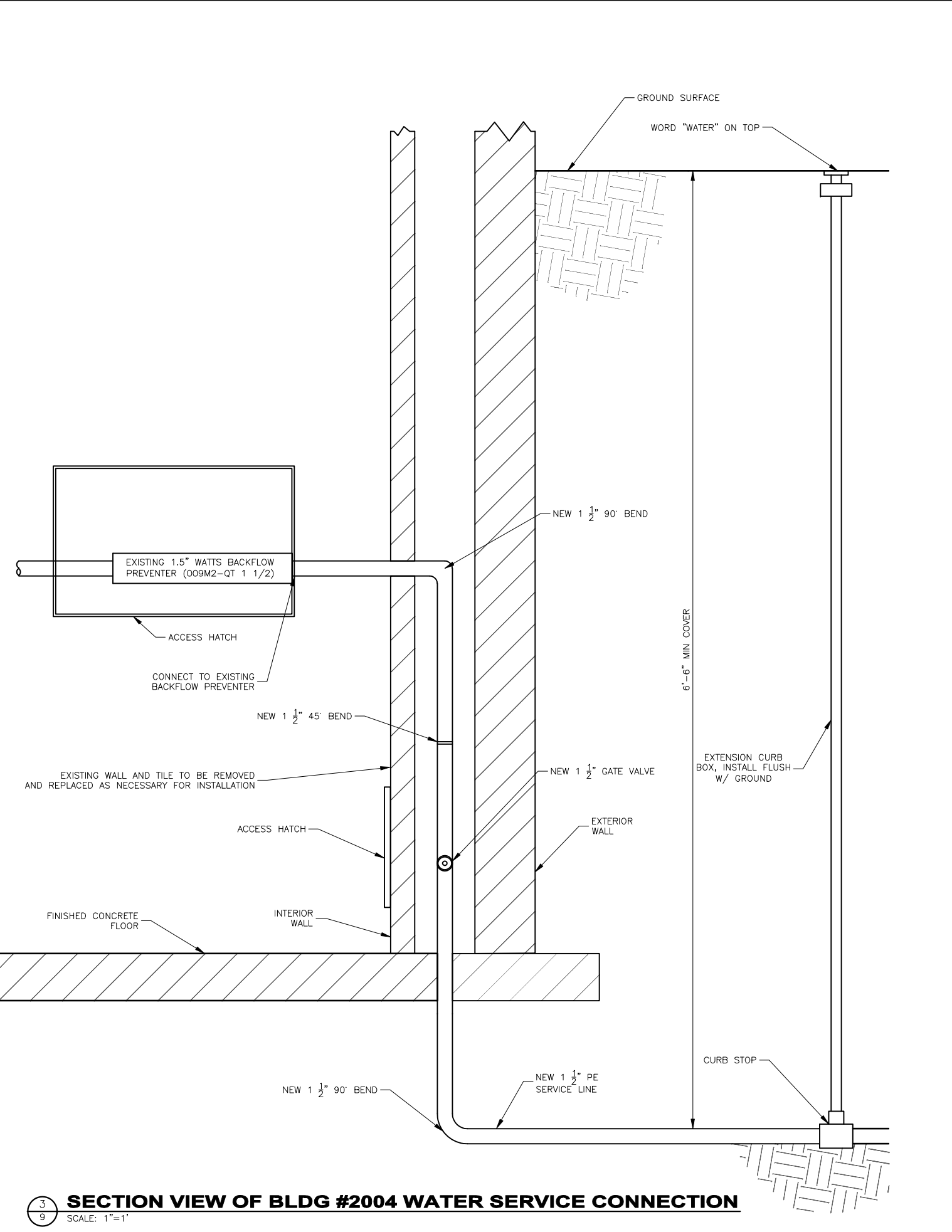
Y:\Shared\Helena Projects\1-22241-B-D NF Philipsburg RS Water\CADD 1-22241\Sheets\1-22241-09 Civil Details.dwg



1
9 **TOP VIEW OF BLDG #2004 WATER SERVICE CONNECTION**
SCALE: 1"=1'



2
9 **SECTION VIEW OF BLDG #2004 WATER SERVICE CONNECTION**
SCALE: 1"=1'



3
9 **SECTION VIEW OF BLDG #2004 WATER SERVICE CONNECTION**
SCALE: 1"=1'

REVISION DESCRIPTION		BY	DATE
NO.			
1			
2			
3			
4			
5			

PROJECT: 1-22241
DESIGNED: JP
DRAWN: JS
CHECKED: JP
APPROVED: JP
DATE: APRIL 14, 2023



FOREST SERVICE
U.S. DEPARTMENT OF AGRICULTURE



GreatWest
ENGINEERING
2601 BELT VIEW DRIVE
HELENA, MT 59601
(406)449-8627

BEAVERHEAD-DEERLODGE NATIONAL FOREST
PINTLER DISTRICT RANGER STATION
WATER DISTRIBUTION SYSTEM

CIVIL DETAILS - OFFICE WATER SERVICE

SHEET NO.

9

OF 14

Y:\Shared\Helena Projects\1-22241-B-D NF Philipsburg RS Water\CADD 1-22241\Sheets\1-22241-12 Civil Details.dwg



PLUMBING IN WALL
BETWEEN BACKFLOW
PREVENTER AND GATE VALVE

2
10

OFFICE (BLDG #D2004) EXISTING WATER SERVICE



WATER SERVICE ENTRANCE AND GATE VALVE

1
10

OFFICE (BLDG #D2004) EXISTING WATER SERVICE



EXISTING 1-1/2" SERVICE
AND GATE VALVE

3
10

OFFICE (BLDG #D2004) EXISTING WATER SERVICE

BEAVERHEAD-DEERLODGE NATIONAL FOREST
PINTLER DISTRICT RANGER STATION
WATER DISTRIBUTION SYSTEM
CIVIL DETAILS - OFFICE WATER SERVICE PICTURES

SHEET NO.

10

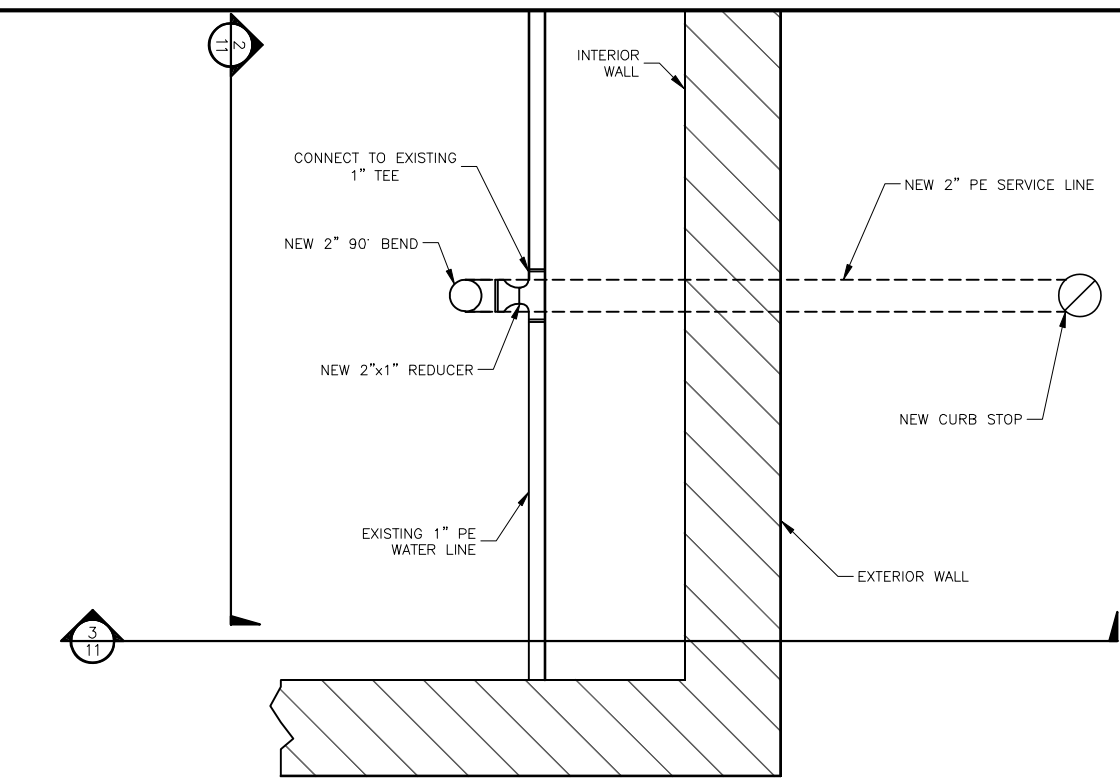
OF 14



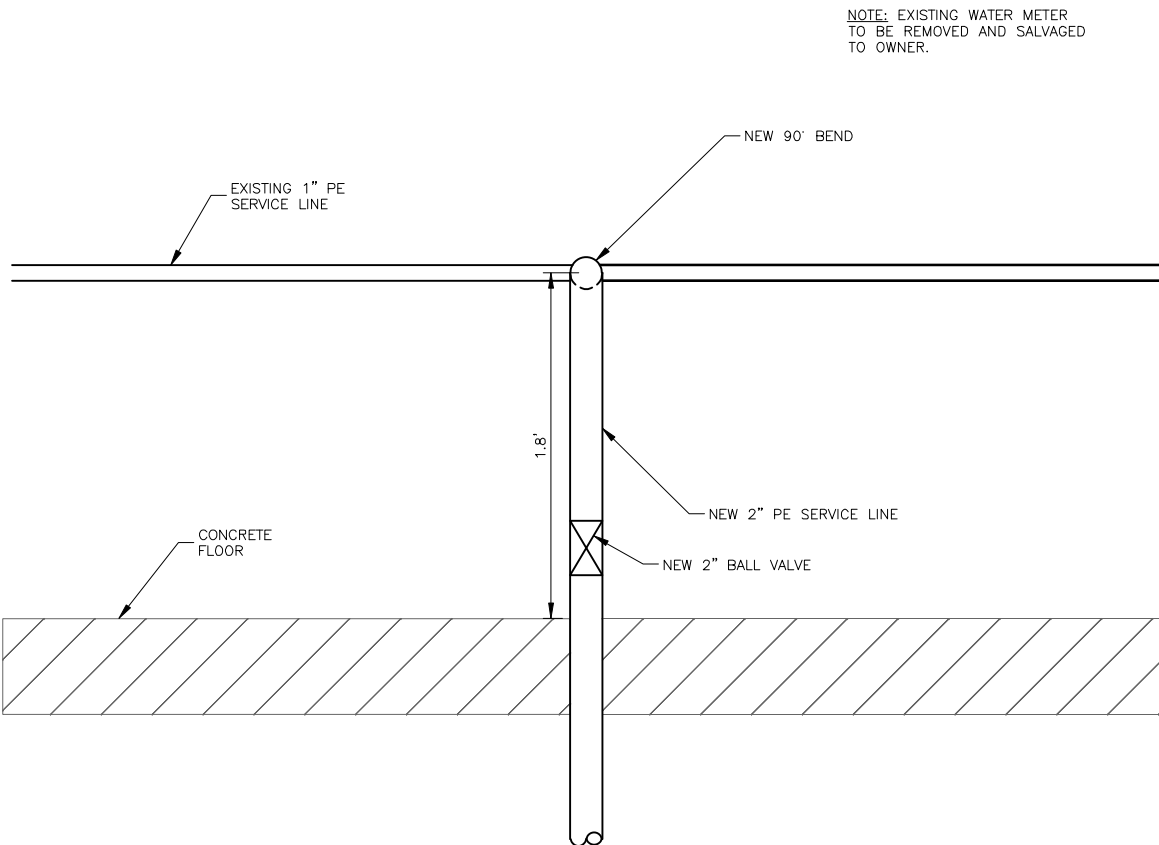
PROJECT: 1-22241
DESIGNED: JP
DRAWN: JS
CHECKED: JP
APPROVED: JP
DATE: APRIL 14, 2023

NO.	REVISION DESCRIPTION	BY	DATE
1			
2			
3			
4			
5			

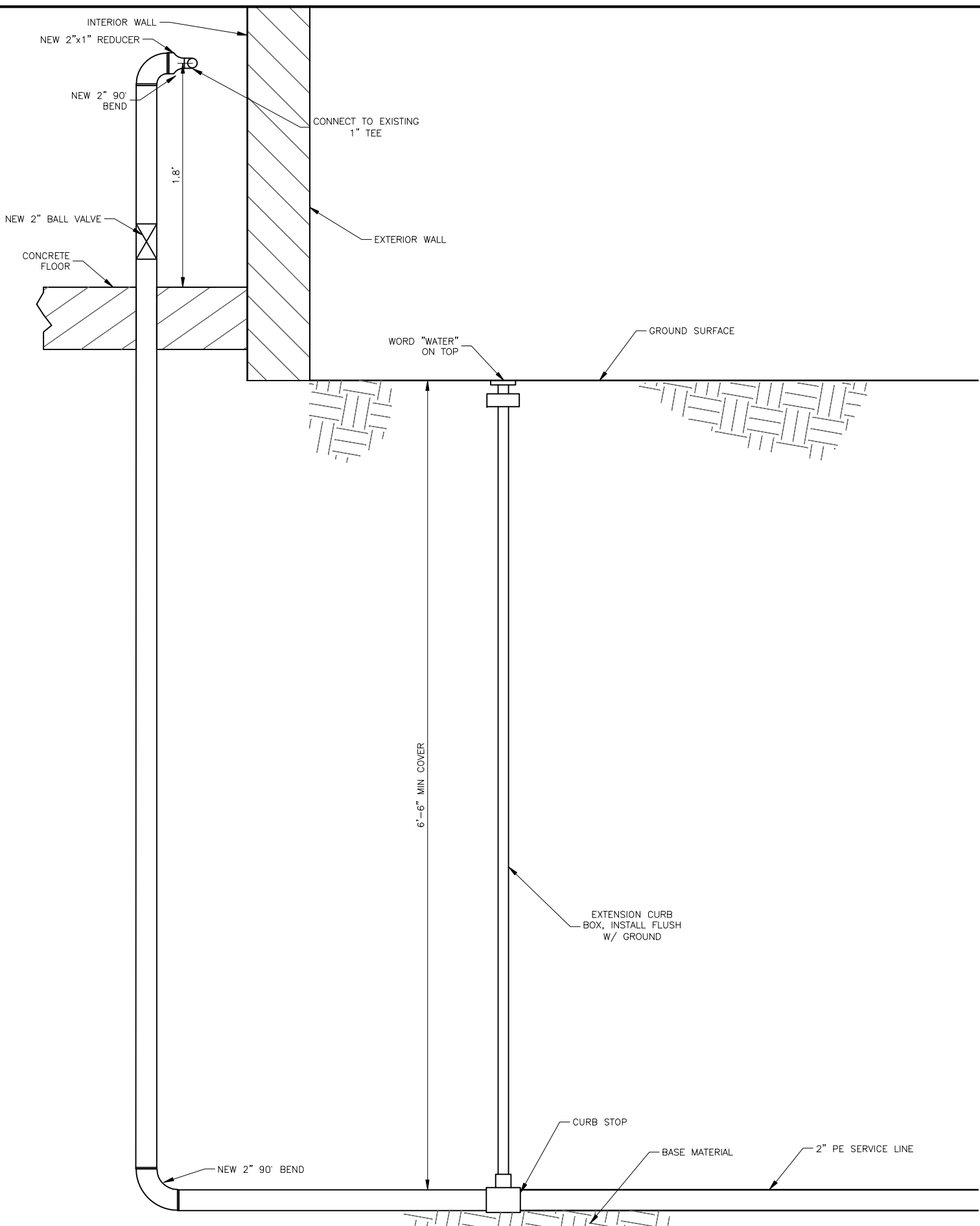
Y:\Shared\Helena Projects\1-22241-B-D NF Philipsburg RS Water\CADD 1-22241\Sheets\1-22241-10 Civil Details.dwg



1
11 **TOP VIEW OF (BLDG #D2305) WATER SERVICE CONNECTION**
SCALE: 1"=1'



2
11 **SECTION VIEW OF BLDG #D2305 WATER SERVICE CONNECTION**
SCALE: 1"=1'



3
11 **SECTION VIEW OF BLDG #D2305 WATER SERVICE CONNECTION**
SCALE: 1"=1'

REVISION DESCRIPTION		BY	DATE
NO.			
1			
2			
3			
4			
5			

PROJECT: 1-22241
DESIGNED: JP
DRAWN: JS
CHECKED: JP
APPROVED: JP
DATE: APRIL 14, 2023



**BEAVERHEAD-DEERLODGE NATIONAL FOREST
PINTLER DISTRICT RANGER STATION
WATER DISTRIBUTION SYSTEM**

CIVIL DETAILS - GARAGE-SHOP WATER SERVICE

SHEET NO.
11
OF 14

Y:\Shared\Helena Projects\1-22241-B-D NF Philipsburg RS Water\CADD 1-22241\Sheets\1-22241-13 Civil Details.dwg



1
12 **GARAGE (BLDG #D2305) EXISTING WATER SERVICE**

EXISTING WATER METER TO BE
REMOVED AND SALVAGED TO OWNER



2
12 **GARAGE (BLDG #D2305) EXISTING WATER SERVICE**

EXISTING 1" TEE
NEW 2" SERVICE TO CONNECT
TO THIS TEE

EXISTING 2" SHUTOFF VALVE
NEW 2" BALL VALVE TO BE INSTALLED
ON NEW 2" SERVICE LINE

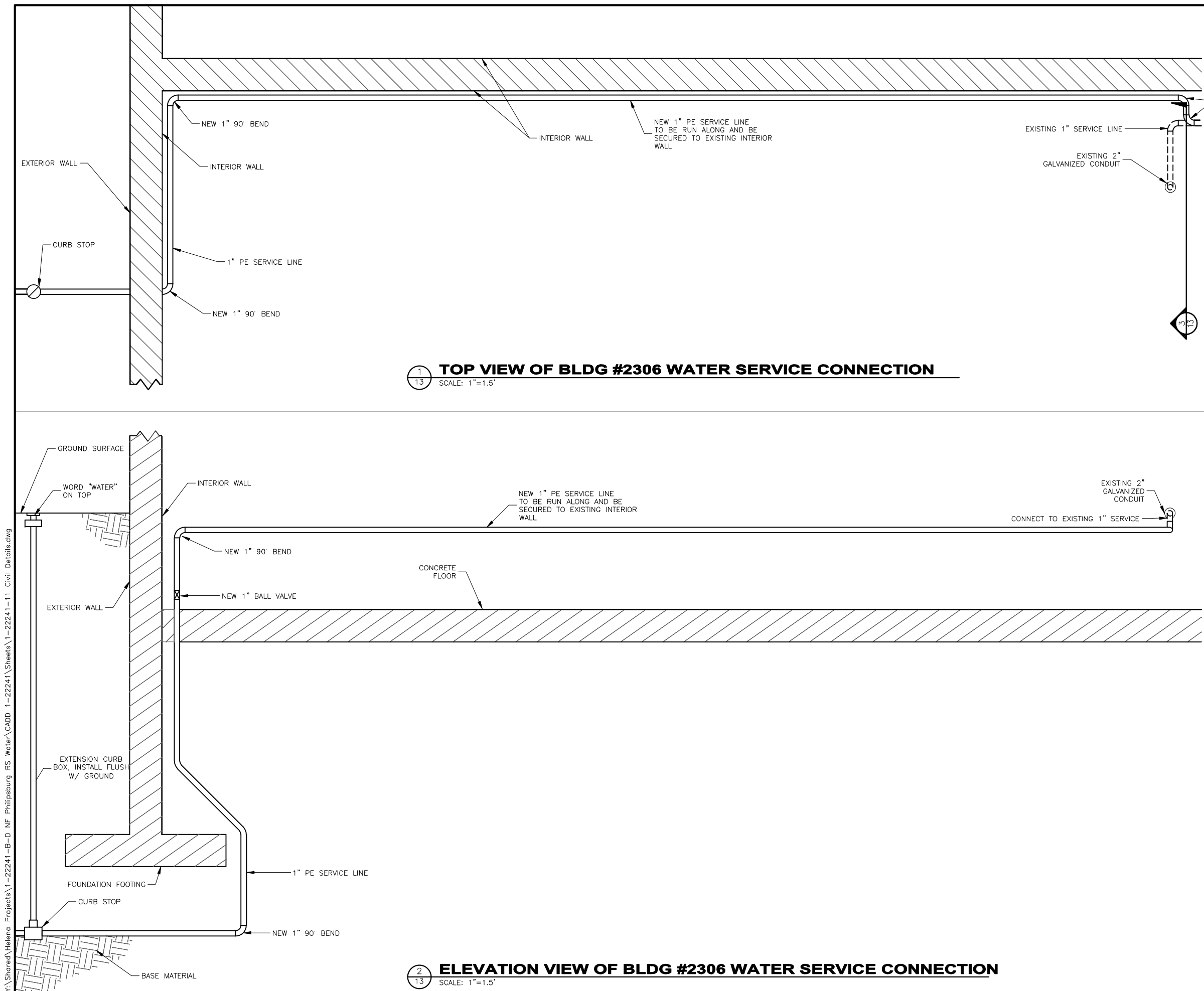
NO.	REVISION DESCRIPTION	BY	DATE
1			
2			
3			
4			
5			

PROJECT: 1-22241
DESIGNED: JP
DRAWN: JS
CHECKED: JP
APPROVED: JP
DATE: APRIL 14, 2023



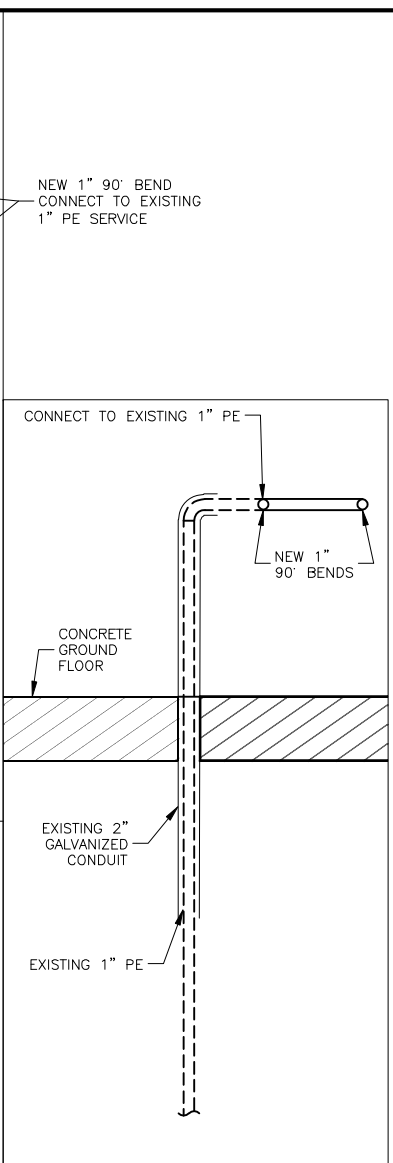
**BEAVERHEAD-DEERLODGE NATIONAL FOREST
PINTLER DISTRICT RANGER STATION
WATER DISTRIBUTION SYSTEM**
CIVIL DETAILS - GARAGE-SHOP WATER SERVICE
PICTURES

Y:\Shared\Helena Projects\1-22241-B-D NF Philipsburg RS Water\CADD 1-22241\Sheets\1-22241-11 Civil Details.dwg



1
13 TOP VIEW OF BLDG #2306 WATER SERVICE CONNECTION
SCALE: 1"=1.5'

2
13 ELEVATION VIEW OF BLDG #2306 WATER SERVICE CONNECTION
SCALE: 1"=1.5'



3
13 SECTION VIEW
SCALE: 1"=1.5'

REVISION DESCRIPTION		BY	DATE
NO.			
1			
2			
3			

PROJECT: 1-22241	DESIGNED: JP	DRAWN: JS	CHECKED: JP	APPROVED: JP	DATE: APRIL 14, 2023
------------------	--------------	-----------	-------------	--------------	----------------------

U.S. FOREST SERVICE
DEPARTMENT OF AGRICULTURE

GreatWest
ENGINEERING
2601 BELT VIEW DRIVE
HELENA, MT 59601
(406)449-8627

BEAVERHEAD-DEERLODGE NATIONAL FOREST
PINTLER DISTRICT RANGER STATION
WATER DISTRIBUTION SYSTEM

CIVIL DETAILS - WAREHOUSE-GARAGE WATER SERVICE

SHEET NO.

13

OF 14

Y:\Shared\Helena Projects\1-22241-B-D NF Philipsburg RS Water\CADD 1-22241-Sheets\1-22241-14 Civil Details.dwg



1
14 **WAREHOUSE (BLDG #D2306) EXISTING WATER SERVICE**



2
14 **WAREHOUSE (BLDG #D2306) SOUTH AND INTERIOR WALL**

NO.	REVISION DESCRIPTION	BY	DATE
1			
2			
3			
4			
5			

PROJECT: 1-22241
DESIGNED: JP
DRAWN: JS
CHECKED: JP
APPROVED: JP
DATE: APRIL 14, 2023



**BEAVERHEAD-DEERLODGE NATIONAL FOREST
PINTLER DISTRICT RANGER STATION
WATER DISTRIBUTION SYSTEM**
CIVIL DETAILS - WAREHOUSE-GARAGE WATER SERVICE
PICTURES