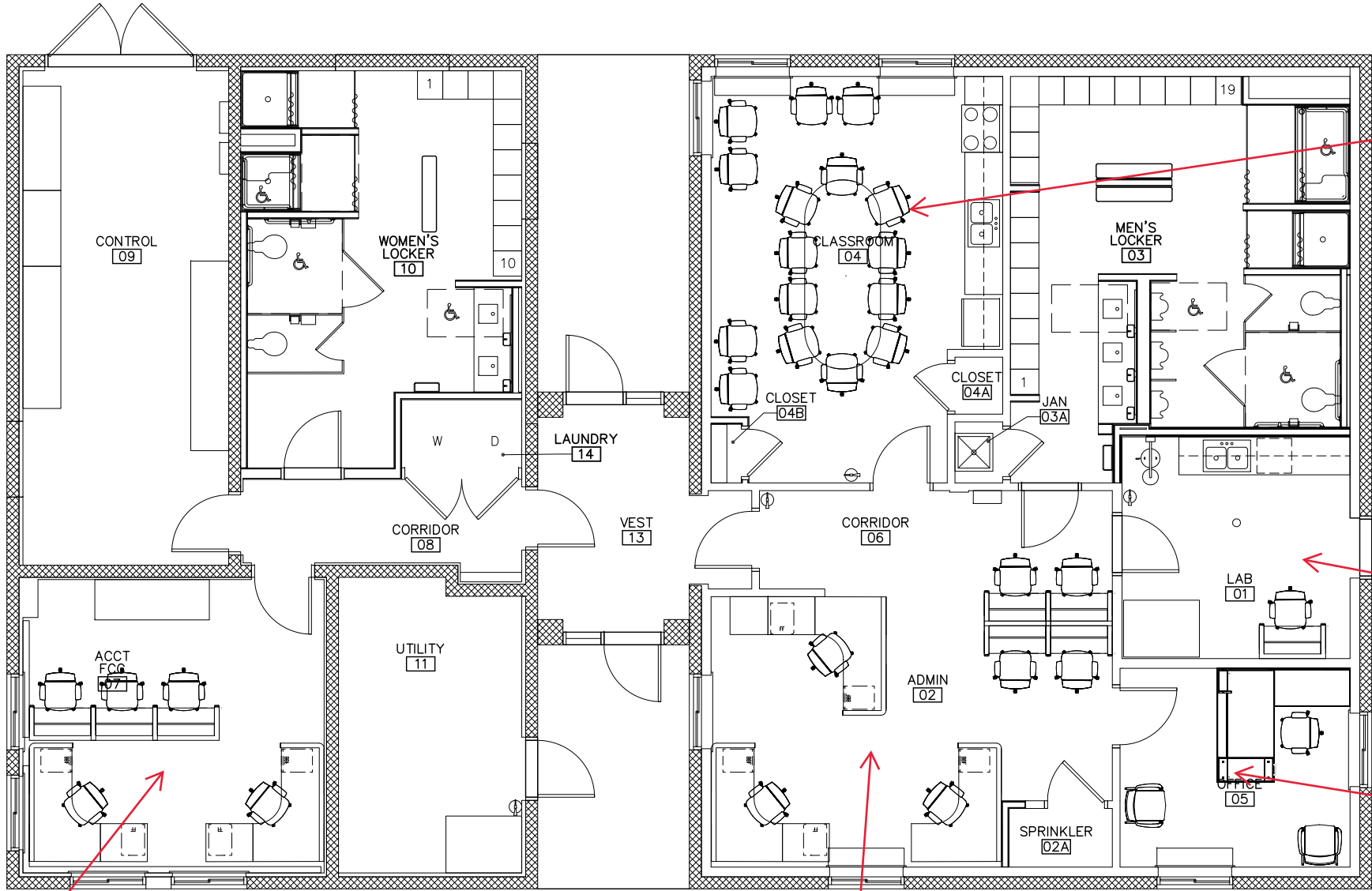


Pease Building 165 Furniture Budget



1 x Conference table (96" w x 42" d x 28" h)  
16 x Office chairs (26" w x 26" d x 38.5" h)

1 x Office chair (26" w x 26" d x 38.5" h)  
1 x 18" by 36" workstation (Rectangular shaped)

1 x 6'x6' workstations(L-Shaped)  
1 x Office chair (26" w x 26" d x 38.5" h)  
2 x Side chairs (29" w 30.25" d 31.5" h)

5 x office chairs (26" w x 26" d x 38.5" h)  
3 x 18x36 workstations (Rectangular shaped)  
2 x 6'x6' workstations(L-Shaped)

7 x Office chairs (26" w x 26" d x 38.5" h)  
4 x 18" by 36" workstation (Rectangular shaped)  
3 x 6'x6' workstations(L-Shaped)

Total: \$11,125

FINISH FLOORING AND FURNITURE PLAN

