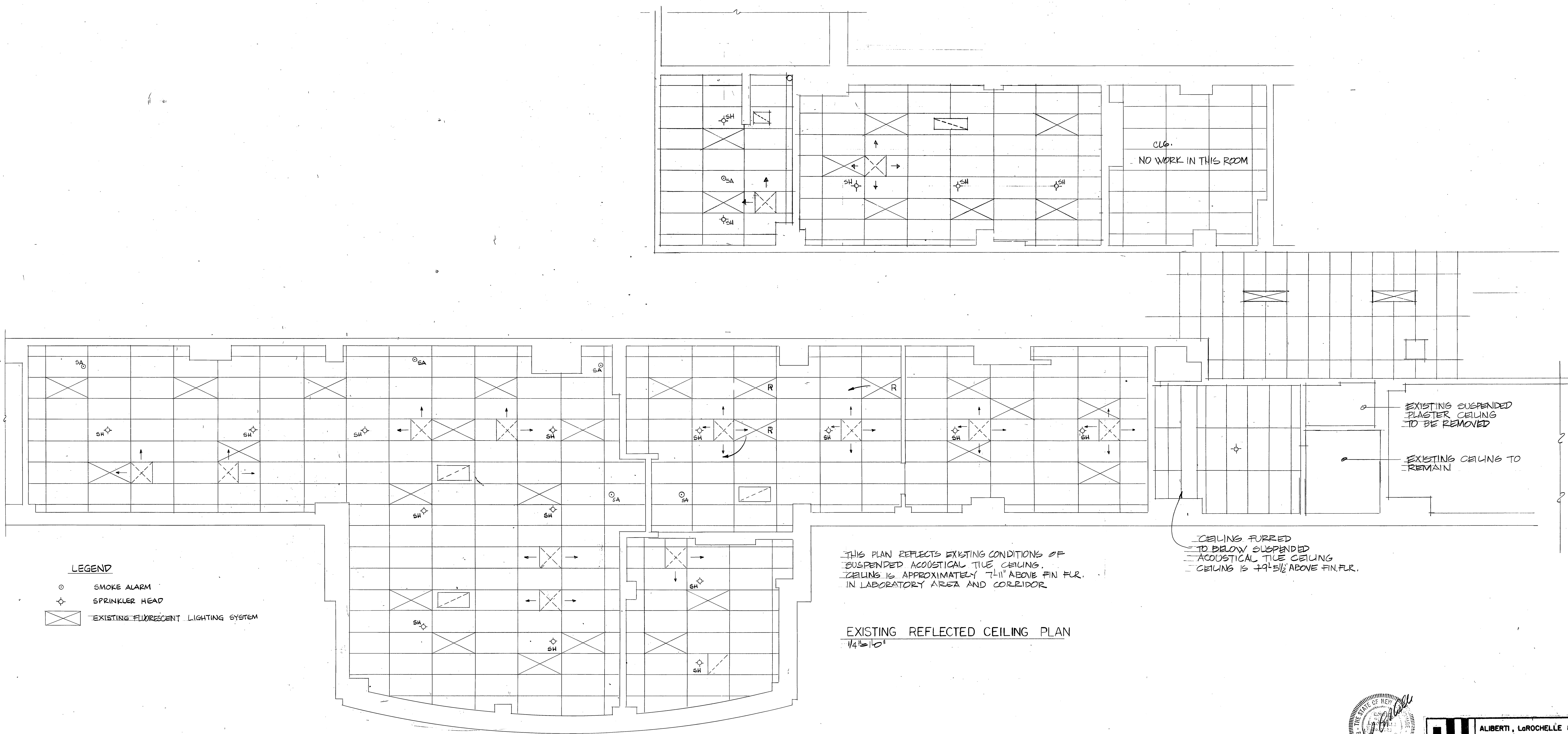


one eighth inch = one foot  
one quarter inch = one foot  
one half inch = one foot  
three eighths inch = one foot  
one inch = one foot  
one and one half inches = one foot  
three inches = one foot



LEGEND

- SMOKE ALARM
- ★ SPRINKLER HEAD
- ⊠ EXISTING FLUORESCENT LIGHTING SYSTEM

THIS PLAN REFLECTS EXISTING CONDITIONS OF  
SUSPENDED ACOUSTICAL TILE CEILING.  
CEILING IS APPROXIMATELY 7-11" ABOVE FIN. FLR.  
IN LABORATORY AREA AND CORRIDOR

EXISTING REFLECTED CEILING PLAN  
14-101

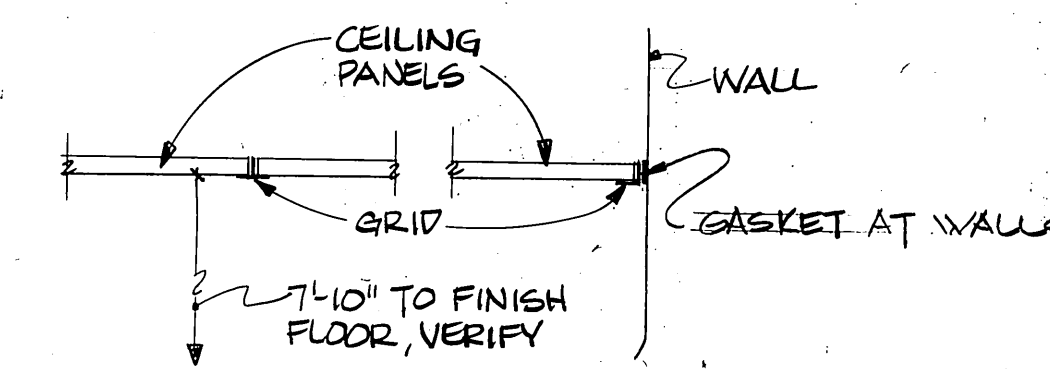
Revisions	Date

Drawing Title EXISTING REFLECTED CEILING PLAN — LABORATORY		Project Title GENERAL RENOVATIONS TO VETERANS ADMINISTRATION HOSPITAL MANCHESTER, NEW HAMPSHIRE		Date APR. 20, 84
Approved: Division Chief	Drawn RW/CW	Building Number NO. 1	Checked	Location
Approved: Service Director	Checked	Drawing No. <b>A5</b> Dwg. 0124		Project No. 80-124



**ALBERT J. LAROCHE & HODSON**  
ENGINEERING CORPORATION INC.  
436 MAIN STREET, LEWISTON, MAINE 04240  
TELEPHONE: (207) 783-2098

Veterans  
Administration



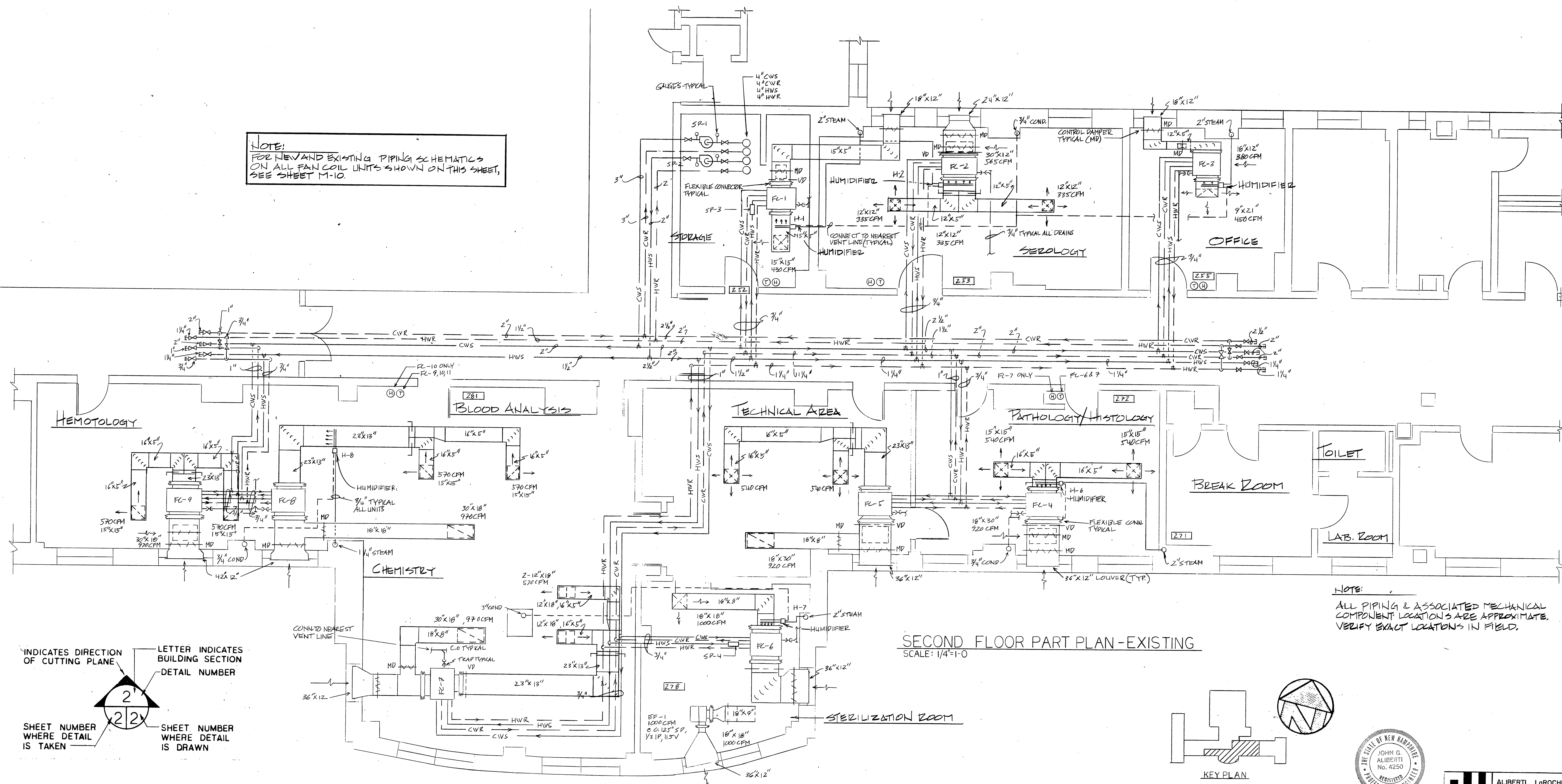
DAVID A. GUSTAFSON  
 LICENSE NO. 13672  
 MECHANICAL ENGINEERING  
 STATE OF IDAHO

Veterans Administration

SPRINKLER LOCATION (BY V.A.M.C.)	16 MAY 84
HVAC DIFFUSERS RELOCATED	11 MAY 84
Revisions	Date

three inches = one foot  
one and one half inches = one foot  
one inch = one foot  
three quarters inch = one foot  
one half inch = one foot  
three eighths inch = one foot  
one quarter inch = one foot  
one eighth inch = one foot

NOTE:  
FOR NEW AND EXISTING PIPING SCHEMATICS  
ON ALL FAN COIL UNITS SHOWN ON THIS SHEET,  
SEE SHEET M-10.



NOTE:  
ALL PIPING & ASSOCIATED MECHANICAL  
COMPONENT LOCATIONS ARE APPROXIMATE.  
VERIFY EXACT LOCATIONS IN FIELD.

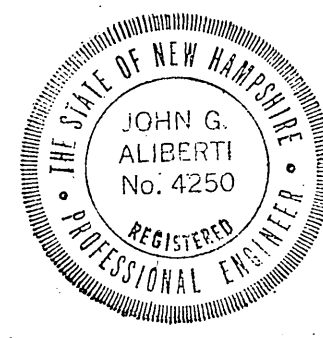
SECOND FLOOR PART PLAN-EXISTING  
SCALE: 1/4"=1'-0"

INDICATES DIRECTION  
OF CUTTING PLANE

LETTER INDICATES  
BUILDING SECTION  
DETAIL NUMBER

SHEET NUMBER  
WHERE DETAIL  
IS TAKEN

SHEET NUMBER  
WHERE DETAIL  
IS DRAWN



ALIBERTI, LaROCHELLE & HOOSON  
ENGINEERING CORPORATION INC.  
436 MAIN STREET, LEWISTON, MAINE 04240  
TELEPHONE (207) 783-2058

Drawing Title EXISTING 2ND FLOOR MECHANICAL PLAN		Project Title GENERAL RENOVATIONS TO VETERANS ADMINISTRATION HOSPITAL MANCHESTER, NEW HAMPSHIRE		Date APR 20, 84
Approved: Division Chief	Drawn RDM/CSB	Building Number NO.1		Project No. 80-124
Approved: Service Director	Checked JGA	Location		DRAWING NO. <b>M1</b> Dwg. 6 OF 25

Veterans  
Administration

83163A

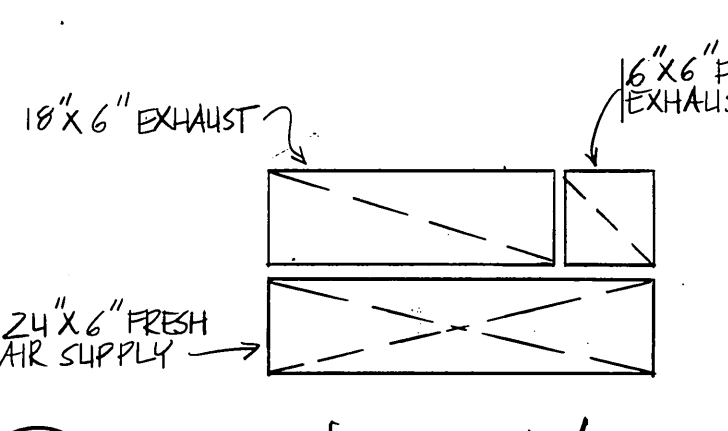


# DIFFUSER, GRILLE AND REGISTER SCHEDULE (NEW, UNLESS OTHERWISE NOTED)

MARK	MANUF.	MODEL	DIRECT.	SIZE	C.F.M.	DAMPER	REMARKS
1	WATERLOO	DM-41	4-WAY	12" X 12"	430	O.B.D.	SUPPLY
2	ANEMOSTAT	GC50L		10" X 8"	430		RETURN
3					430		EXIST. FRESH AIR INTAKE
4					100		
5	ANEMOSTAT	GC50L		18" X 8"	570		RETURN
6	WATERLOO	DM-41	4-WAY	12" X 12"	285	O.B.D.	SUPPLY
7	ANEMOSTAT	GC50L		12" X 8"	430		EXHAUST
8				6" X 6"	60		
9					70		EXIST. FRESH AIR INTAKE
10	ANEMOSTAT	GC50L		12" X 8"	450		RETURN
11					450		EXIST. SUPPLY DIFFUSER
13	WATERLOO	DM-41	4-WAY	9" X 9"	285	O.B.D.	SUPPLY
17	ANEMOSTAT	GC50L		24" X 12"	1140		RETURN
19	WATERLOO	DM-41	4-WAY	15" X 15"	570	O.B.D.	SUPPLY
21				9" X 9"	285		
23	ANEMOSTAT	GC50L		24" X 12"	1140		RETURN
25	ANEMOSTAT	GC50L		24" X 12"	1140		RETURN
26	WATERLOO	DM-25	2-WAY	12" X 12"	500	O.B.D.	SUPPLY
28					1000		EXIST. FRESH AIR INTAKE
29	WATERLOO	DM-41	4-WAY	9" X 9"	270	O.B.D.	SUPPLY
33	ANEMOSTAT	GC50L		18" X 12"	1080		RETURN

NOTE:  
ALL VERTICAL DUCTWORK TO BE INSTALLED SHALL BE SUPPORTED EVERY 5'-0" TO INSURE PROPER STABILITY. (DUCT CHASE) CONTRACTOR TO OPEN & CLOSE MASONRY CHASE WALL AS REQUIRED.

NOTE:  
AFTER ANY NEW DUCTWORK OR PIPING IS INSTALLED THEN FIREWALLS, THE CONTE. SHALL RESEAL THE AREA AROUND THE MECHANICAL WORK WITH FIREPROOFING MATERIALS AS INDICATED IN THE SPECIFICATIONS, TO INSURE ITS FIRE STOPPING INTEGRITY.

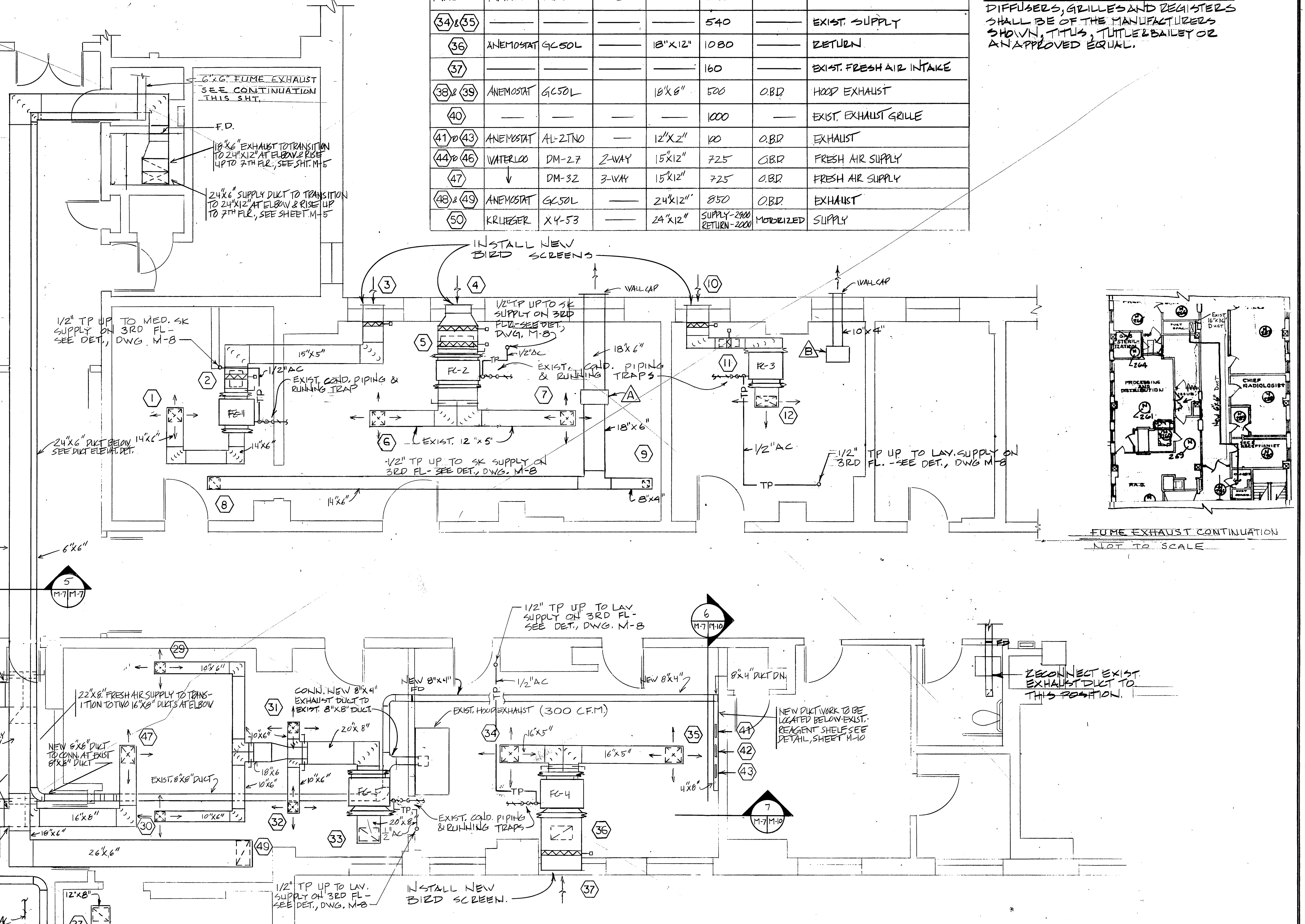


SECTION - DUCTWORK  
NO SCALE

# DIFFUSER, GRILLE AND REGISTER SCHEDULE - CONTINUED

MARK	MANUF.	MODEL	DIRECT.	SIZE	C.F.M.	DAMPER	REMARKS
(34) & (35)	—	—	—	—	540	—	EXIST. SUPPLY
(36)	ANEMOSTAT	GC50L	—	18" X 12"	1080	—	RETURN
(37)	—	—	—	—	160	—	EXIST. FRESH AIR INTAKE
(38) & (39)	ANEMOSTAT	GC50L	—	18" X 8"	520	O.B.D.	HOOD EXHAUST
(40)	—	—	—	—	1000	—	EXIST. EXHAUST GRILLE
(41) & (43)	ANEMOSTAT	AL-2TNO	—	12" X 2"	160	O.B.D.	EXHAUST
(44) & (46)	WATERLOO	DM-27	2-WAY	15" X 12"	725	O.B.D.	FRESH AIR SUPPLY
(47)	↓	DM-32	3-WAY	15" X 12"	725	O.B.D.	FRESH AIR SUPPLY
(48) & (49)	ANEMOSTAT	GC50L	—	24" X 12"	850	O.B.D.	EXHAUST
(50)	KRUEGER	X-Y-53	—	24" X 12"	SUPPLY - 2800 RETURN - 2200	MODERIZED	SUPPLY

NOTE:  
DIFFUSERS, GRILLES AND REGISTERS SHALL BE OF THE MANUFACTURERS SHOWN, TITUS, TITUS & BAILEY OR AN APPROVED EQUAL.

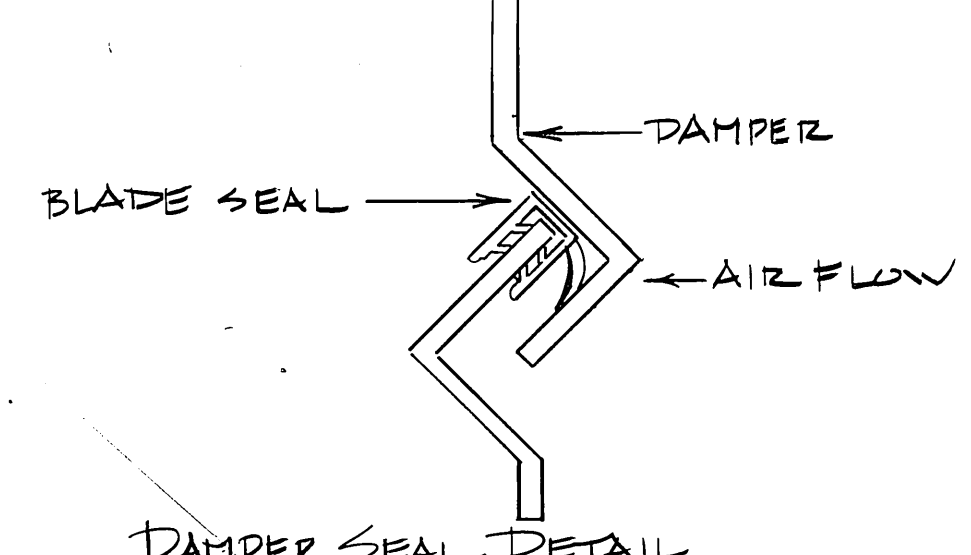


SECOND FLOOR PARTIAL PLAN  
SCALE: 1/4" = 1'-0"

NOTE:  
ALL PIPING AND ASSOCIATED MECHANICAL COMPONENT LOCATIONS ARE APPROXIMATE. VERIFY EXACT LOCATIONS IN FIELD.

KEY PLAN

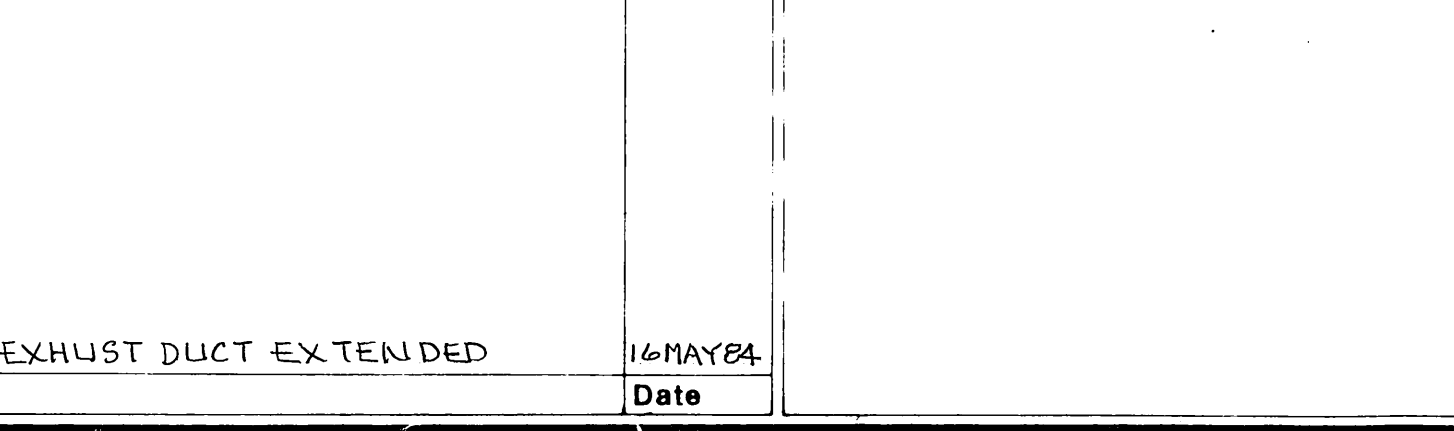
NOTE:  
ALL NEW & EXIST. DAMPERS SHALL HAVE WEATHER SEALS INSTALLED.



DAMPER SEAL DETAIL  
NO SCALE

# STERILIZATION ROOM - NEW EXHAUST FAN LAYOUT

SCALE: 1/4" = 1'-0"



FUME EXHAUST DUCT EXTENDED

Revisions

16 MAY 84

Date

Drawing Title  
NEW DUCT WORK LAYOUT  
2ND FLOOR

Approved: Division Chief  
Approved: Service Director

Project Title  
GENERAL RENOVATIONS TO  
VETERANS ADMINISTRATION  
HOSPITAL

Building Number  
NO. 1  
Location

Date  
APR 20, 84  
Project No.  
80-124

Drawing No.  
M7  
DWG 12-0123

Veterans Administration

83-163-A



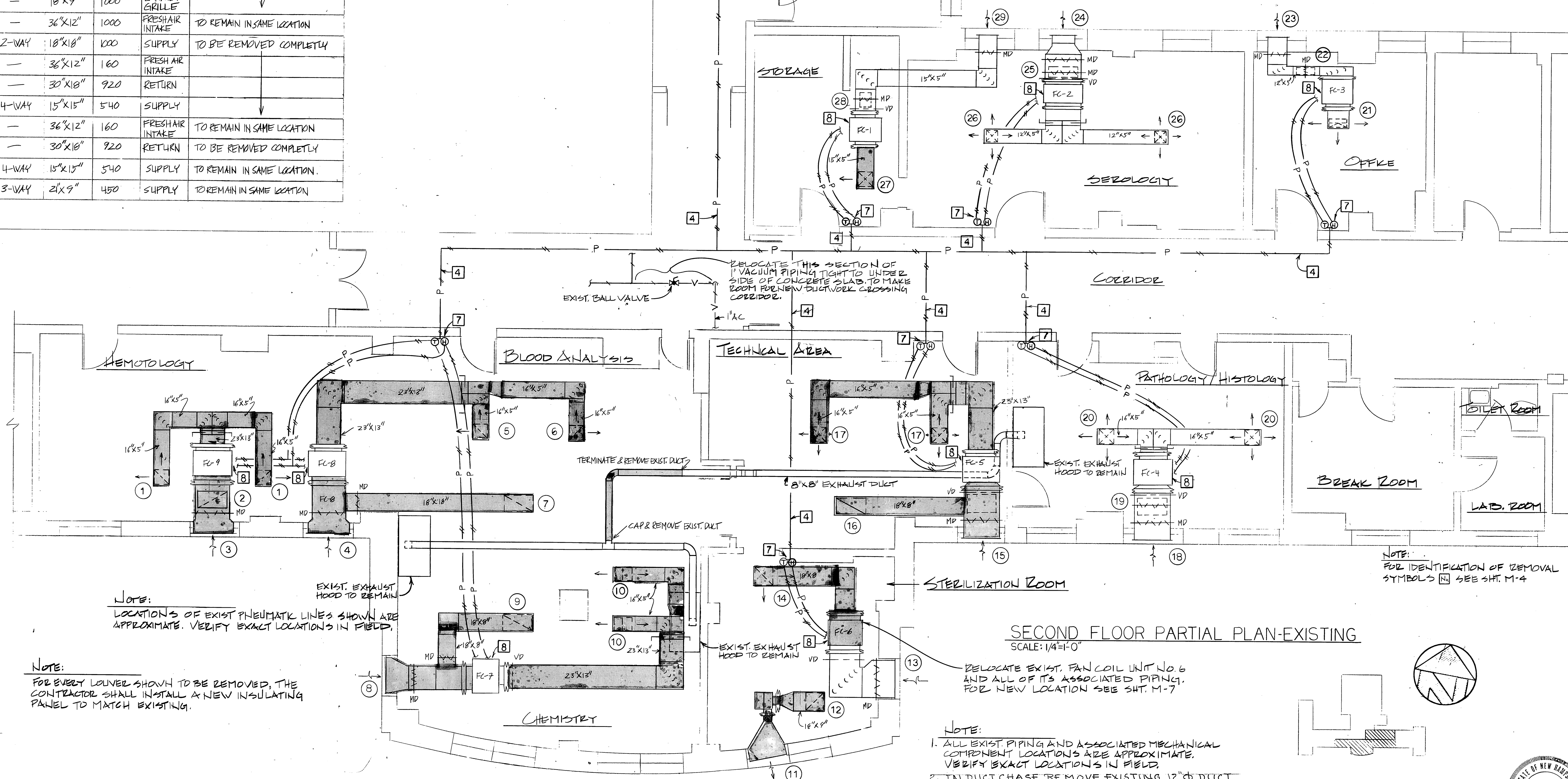
DIFFUSER, GRILLE AND REGISTER SCHEDULE (EXIST.)					
MARK	DIRECT.	SIZE	C.F.M.	TYPE	REMARKS
1	2-WAY	15"x15"	570	SUPPLY	TO BE REMOVED COMPLETELY
2	—	30"x18"	970	RETURN	
3	—	42"x12"	170	FRESH AIR INTAKE	
4	—	42"x12"	170	FRESH AIR INTAKE	
5	2-WAY	15"x15"	570	SUPPLY	
6	2-WAY	15"x15"	570	SUPPLY	
7	—	30"x18"	970	RETURN	
8	—	36"x12"	1000	FRESH AIR INTAKE	
9	—	30"x18"	970	RETURN	
10	2-WAY	18"x12"	570	SUPPLY	
11	—	36"x12"	1000	EXHAUST LOUVER	
12	—	18"x9"	1000	EXHAUST GRILLE	
13	—	36"x12"	1000	FRESH AIR INTAKE	TO REMAIN IN SAME LOCATION
14	2-WAY	18"x18"	1000	SUPPLY	TO BE REMOVED COMPLETELY
15	—	36"x12"	160	FRESH AIR INTAKE	
16	—	30"x18"	920	RETURN	
17	4-WAY	15"x15"	540	SUPPLY	
18	—	36"x12"	160	FRESH AIR INTAKE	TO REMAIN IN SAME LOCATION
19	—	30"x18"	920	RETURN	TO BE REMOVED COMPLETELY
20	4-WAY	15"x15"	540	SUPPLY	TO REMAIN IN SAME LOCATION
21	3-WAY	24"x9"	450	SUPPLY	TO REMAIN IN SAME LOCATION

DIFFUSER, GRILLE AND REGISTER SCHEDULE (EXIST.) CONT.					
MARK	DIRECT.	SIZE	C.F.M.	TYPE	REMARKS
22	—	12"x5"	380	RETURN	TO REMAIN IN SAME LOCATION
23	—	16"x12"	70	FRESH AIR INTAKE	
24	—	24"x12"	100	FRESH AIR INTAKE	
25	—	30"x12"	570	RETURN	
26	4-WAY	12"x12"	335	SUPPLY	
27	1-WAY	15"x15"	430	SUPPLY	TO BE REMOVED AND REPAKED SEE SHT. M-4
28	—	18"x12"	430	RETURN	TO REMAIN IN SAME LOCATION
29	—	16"x12"	430	FRESH AIR INTAKE	

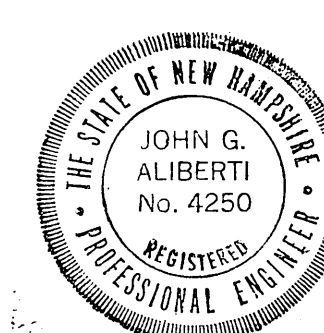
DISCONNECT AND REMOVE ALL EXIST. PNEUMATIC TUBING BACK TO MAIN RISER. PLUG PNEUMATIC TUBING AT THIS POINT.

EXIST. DUCT CHASE (SEE NOTE 2)

APPROXIMATE LOCATION OF PNEUMATIC MAIN RISER FROM 7TH FLOOR PENTHOUSE.



SECOND FLOOR PARTIAL PLAN-EXISTING  
SCALE: 1/4"=1'-0"



ALIBERTI, LaROCHELLE & HODSON  
ENGINEERING CORPORATION INC.  
436 MAIN STREET, LEWISTON, MAINE 04240  
TELEPHONE: (207) 783-2058

Drawing Title EXISTING DUCTWORK LAYOUT 2ND FLOOR & REMOVAL PLAN		Project Title GENERAL RENOVATIONS TO VETERANS ADMINISTRATION HOSPITAL MANCHESTER, NEW HAMPSHIRE		Date APR. 20, 84
Approved: Division Chief	Drawn CSB/RDM	Building Number NO. 1	Project No. 80-124	
Approved: Service Director	Checked JGA	Location	DRAWING NO. <b>M6</b> Dwg. 11.01.23	

Veterans Administration



DIFFUSER, GRILLE AND REGISTER SCHEDULE (NEW, UNLESS OTHERWISE NOTED)									
MARK	MANUF.	MODEL	DIRECT.	SIZE	C.F.M.	DAMPER	REMARKS		
1	WATERLOO	DM-41	4-WAY	12"X12"	430	O.B.D.	SUPPLY		
2	ANEMOSTAT	GC50L		10"X8"	430		RETURN		
3					430		EXIST. FRESH AIR INTAKE		
4					100		RETURN		
5	ANEMOSTAT	GC50L		18"X8"	570		RETURN		
6 & 7	WATERLOO	DM-41	4-WAY	12"X12"	285	O.B.D.	SUPPLY		
8	ANEMOSTAT	GC50L		12"X8"	430		EXHAUST		
9				6"X6"	60		EXIST. FRESH AIR INTAKE		
10					70		EXIST. FRESH AIR INTAKE		
11	ANEMOSTAT	GC50L		12"X8"	450		RETURN		
12					450		EXIST. SUPPLY DIFFUSER		
13 & 16	WATERLOO	DM-41	4-WAY	9"X9"	285	O.B.D.	SUPPLY		
17 & 18	ANEMOSTAT	GC50L		24"X12"	1140		RETURN		
19 & 20	WATERLOO	DM-41	3-WAY 2-WAY	15"X15"	570	O.B.D.	SUPPLY		
21 & 22			3-WAY	9"X9"	285		RETURN		
23 & 24		DM-31	3-WAY	12"X6"			RETURN		
25	ANEMOSTAT	GC50L		24"X12"	1140		RETURN		
26 & 27	WATERLOO	DM-25	2-WAY	12"X12"	500	O.B.D.	SUPPLY		
28					1000		EXIST. FRESH AIR INTAKE		
29 & 32	WATERLOO	DM-41	4-WAY	9"X9"	270	O.B.D.	SUPPLY		
33	ANEMOSTAT	GC50L		18"X12"	1080		RETURN		

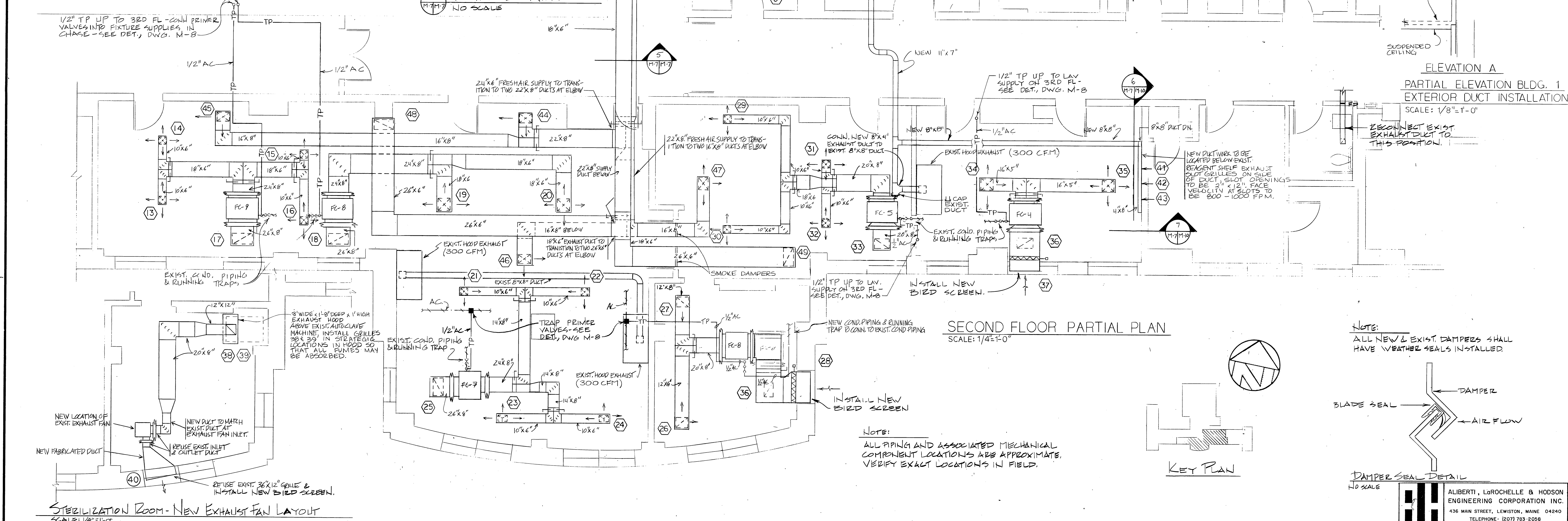
NOTE:  
ALL VERTICAL DUCTWORK TO BE INSTALLED SHALL BE SUPPORTED EVERY 5'-0" TO INSURE PROPER STABILITY. (DUCT CHASE) CONTRACTOR TO OPEN & CLOSE MASONRY CHASE WALL AS REQUIRED.

NOTE:  
AFTER ANY NEW DUCTWORK OR PIPING IS INSTALLED THRU FIREWALLS, THE CONTR. SHALL RESEAL THE AREA AROUND THE MECHANICAL WORK WITH FIREPROOFING MATERIALS AS INDICATED IN THE SPECIFICATIONS, TO INSURE ITS FIRE STOPPING INTEGRITY.

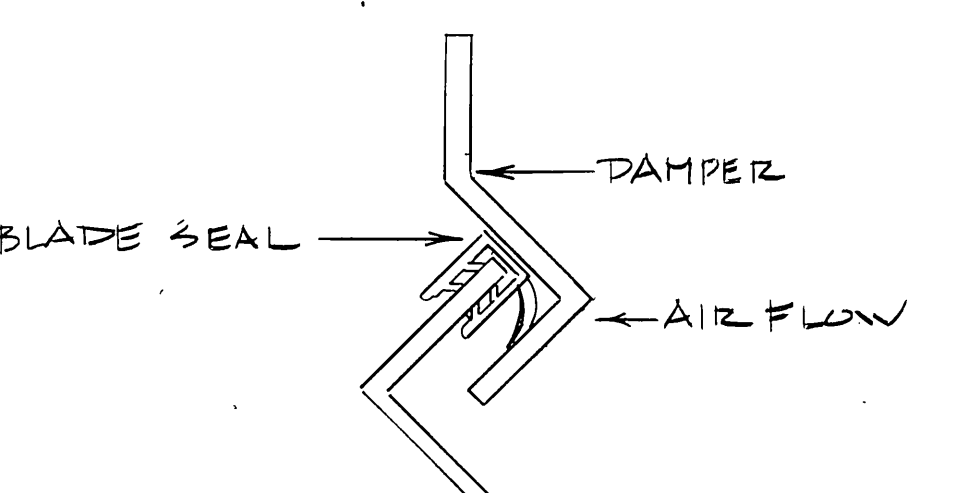
SECTION - DUCTWORK  
NO SCALE

DIFFUSER, GRILLE AND REGISTER SCHEDULE - CONTINUED									
MARK	MANUF.	MODEL	DIRECT.	SIZE	C.F.M.	DAMPER	REMARKS		
34 & 35			3-WAY 4-WAY		540		EXIST. SUPPLY		
36	ANEMOSTAT	GC50L		18"X12"	1080		RETURN		
37					160		EXIST. FRESH AIR INTAKE		
38 & 39	ANEMOSTAT	GC50L		18"X8"	500	O.B.D.	HOOD EXHAUST		
40					1000		EXIST. EXHAUST GRILLE		
41 & 43	ANEMOSTAT	AL-21ND		12"X2"	133 MIN.	O.B.D.	EXHAUST		
44 & 46	WATERLOO	DM-27	2-WAY	15"X12"	725	O.B.D.	FRESH AIR SUPPLY		
47		DM-32	3-WAY	15"X12"	725	O.B.D.	FRESH AIR SUPPLY		
48 & 49	ANEMOSTAT	GC50L		24"X12"	850	O.B.D.	EXHAUST		
50	KRIEGER	X4-53		24"X12"	SUPPLY-2800 RETURN-2200		MODERIZED SUPPLY		

NOTE:  
DIFFUSERS, GRILLES AND REGISTERS SHALL BE OF THE MANUFACTURERS SHOWN, TITUS, TITUS & BAILEY OR AN APPROVED EQUAL.



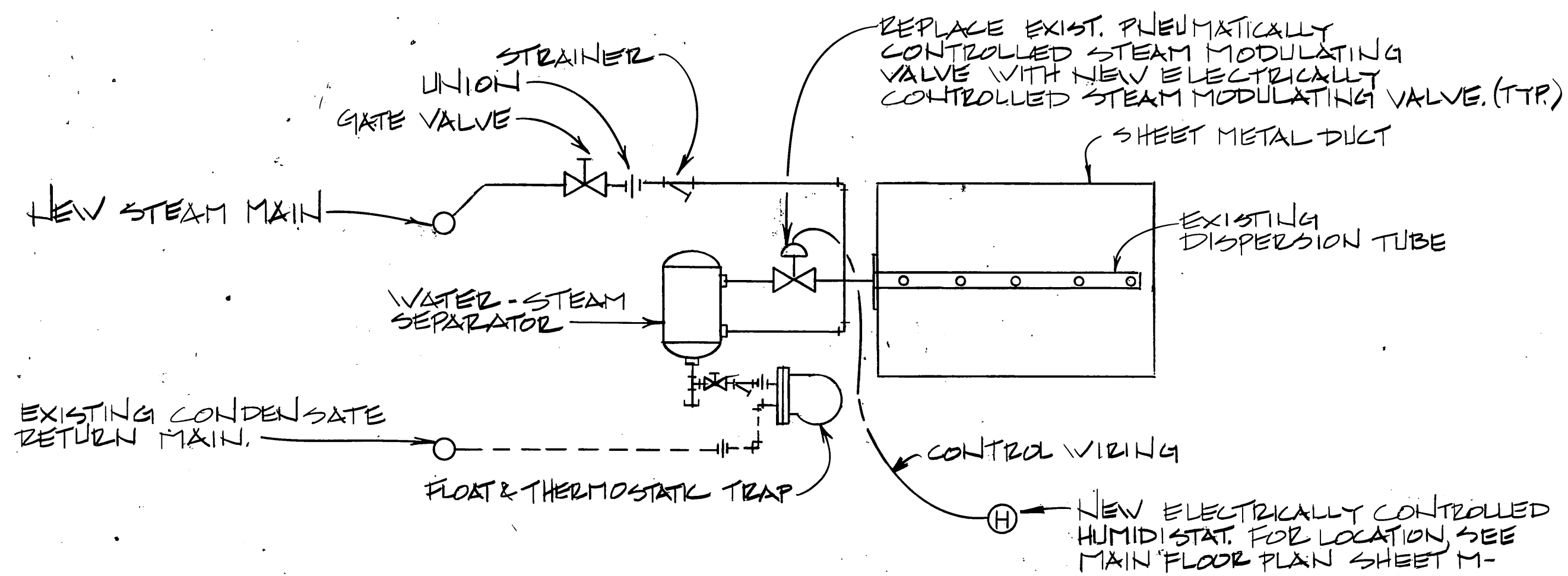
NOTE:  
ALL NEW & EXIST. DAMPERS SHALL HAVE WEATHER SEALS INSTALLED.



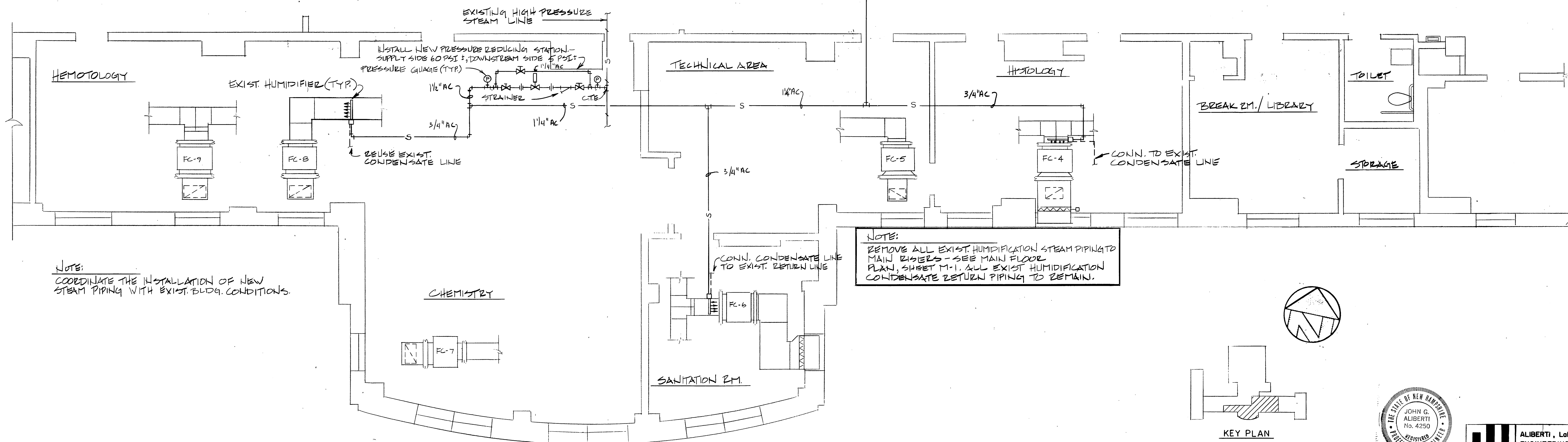
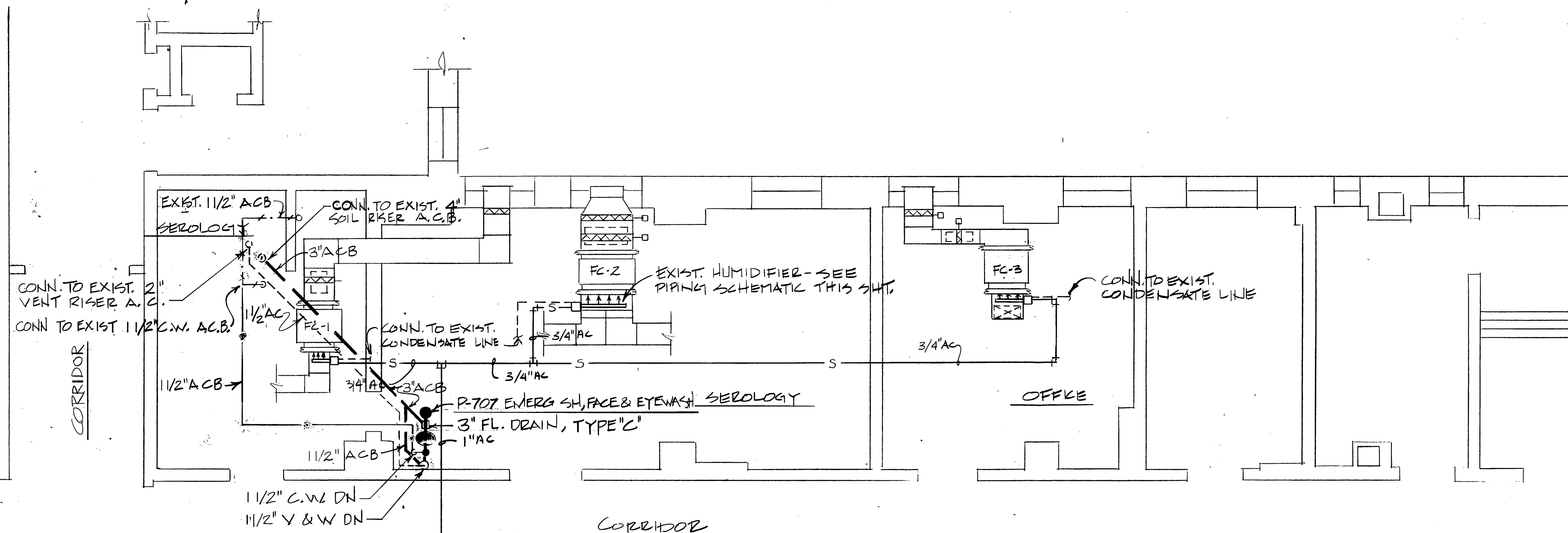
FUME EXHAUST DUCT EXTENDED MAY 16, 84 CLARIFICATIONS & CHANGES - IN JULY 18, 84 MECH. REV. REMOVE RETURN DAMPERS FC 1, 2 & 3 DEC. 28, 84		Drawing Title <b>NEW DUCT WORK LAYOUT 2ND FLOOR</b>		Project Title <b>GENERAL RENOVATIONS TO VETERANS ADMINISTRATION HOSPITAL</b>		Date <b>APR. 20, 84</b>	
Approved: Division Chief		Drawn <b>CSB/RDM</b>		Building Number <b>NO. 1</b>		Project No. <b>80-124</b>	
Approved: Service Director		Checked		Location		Drawing No. <b>M7 DWG. 17-023</b>	

ALBERTI, LOROCHELLE & HOODSON  
ENGINEERING CORPORATION INC.  
436 MAIN STREET, LEWISTON, MAINE 04240  
TELEPHONE: (207) 783-2058

three inches = one foot  
one and one half inches = one foot  
one inch = one foot  
three quarters inch = one foot  
one half inch = one foot  
three eighths inch = one foot  
one quarter inch = one foot  
one eighth inch = one foot

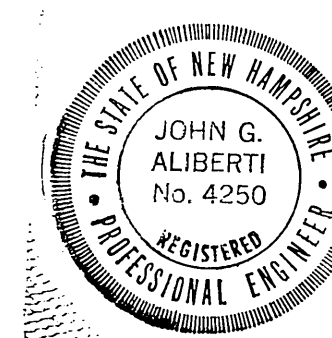
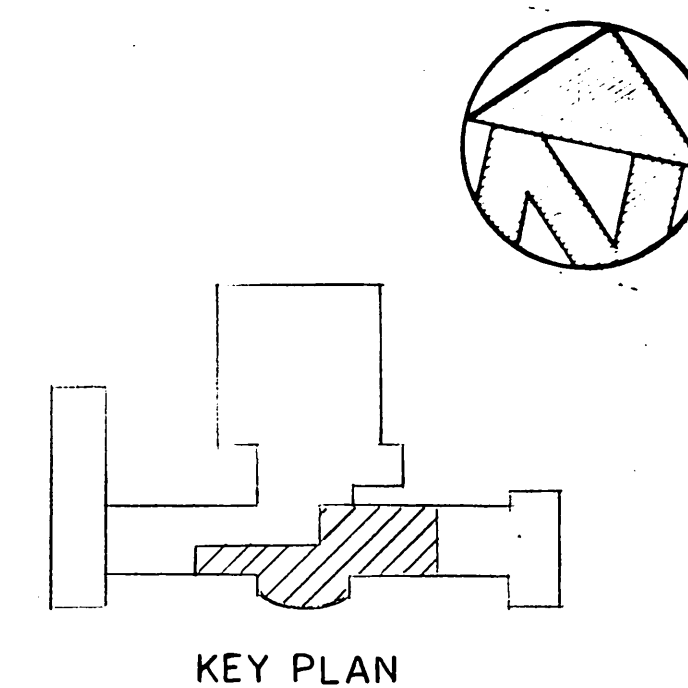


STEAM HUMIDIFIER PIPING SCHEMATIC  
NO SCALE



NOTE:  
COORDINATE THE INSTALLATION OF NEW  
STEAM PIPING WITH EXIST. BLDG. CONDITIONS.

NOTE:  
REMOVE ALL EXIST. HUMIDIFICATION STEAM PIPING TO  
MAIN RISERS - SEE MAIN FLOOR  
PLAN, SHEET M-1. ALL EXIST. HUMIDIFICATION  
CONDENSATE RETURN PIPING TO REMAIN.



ALIBERTI, LaROCHELLE & HODSON  
ENGINEERING CORPORATION INC.  
436 MAIN STREET, LEWISTON, MAINE 04240  
TELEPHONE (207) 783-2088

Revisions		Date	Drawing Title NEW STEAM PIPING TO EXISTING HUMIDIFICATION SYSTEM IN 2ND FLOOR CLINICAL LAB.		Project Title GENERAL RENOVATIONS TO VETERANS ADMINISTRATION HOSPITAL MANCHESTER, NEW HAMPSHIRE		Date APR. 20, 84
Approved: Division Chief			Drawn RDM.	Building Number NO. 1	Project No. 80-124		Drawing No. M11
Approved: Service Director			Checked JGA	Location	Veterans Administration		