



Operation DEEP FREEZE

Joint Task Force Support Forces Antarctica

Colonel Ian Biggins

DoD Liaison to National Science Foundation



Overview



- DoD Support for USAP
- Scope of Operations
- Command and Control
- Antarctic Deployment
- Challenges



Authority



- PM 6646
 - Signed by President Reagan, 1982
 - “United States Antarctic Program...active and influential presence...”
 - “...Department of Defense shall continue to provide...logistical support...”
- MOA between DoD and NSF (1 May 07)
 - Signed by NSF and Secy of the Air Force (DoD Executive Agent)
 - Defines relationship between DoD and NSF for Operational and Logistical Support
 - Aircraft and Vessel
 - Aviation Technical Support
 - Postal Services
 - Naval Cargo Handlers & Port Group
 - Veterinary Services (Food Inspection)



NSF-DoD Relationship



Independent Agency of US GOV
Congressional Oversight

National Science Foundation
Dr. Arden L. Bement, Jr.
Director

Office of Polar Programs
Dr. Karl A. Erb
Director

USPACOM

Joint Task Force
Support Forces Antarctica

USTRANSCOM



Div Antarctic Sciences
Dr. Scott Borg

Div of Antarctic Infrastructure
and Logistics
Brian Stone (Acting)

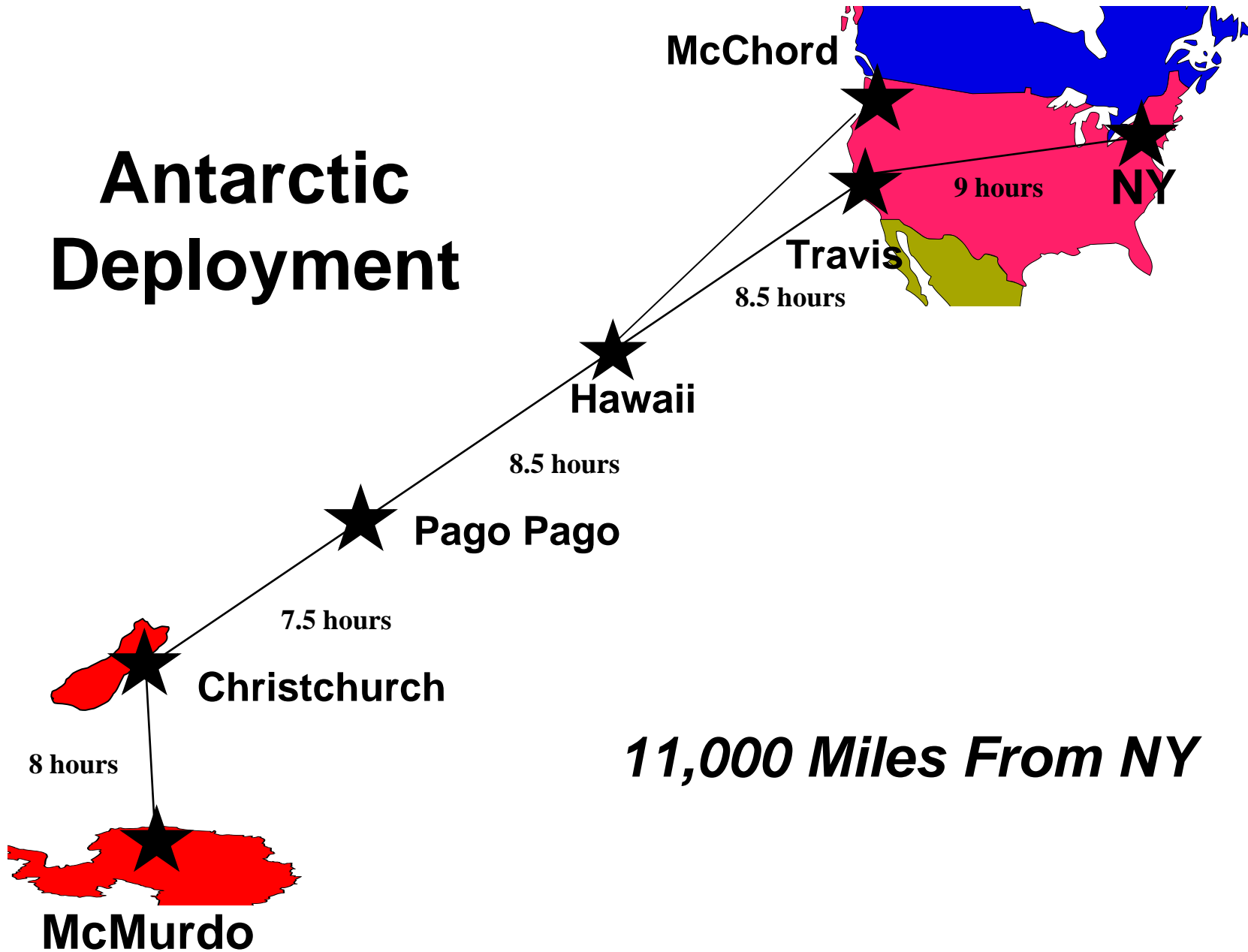
Office of Polar Environment,
Health & Safety
Dr. Mike Montopoli

Div of Arctic Sciences
Simon Stephenson

Direct Support

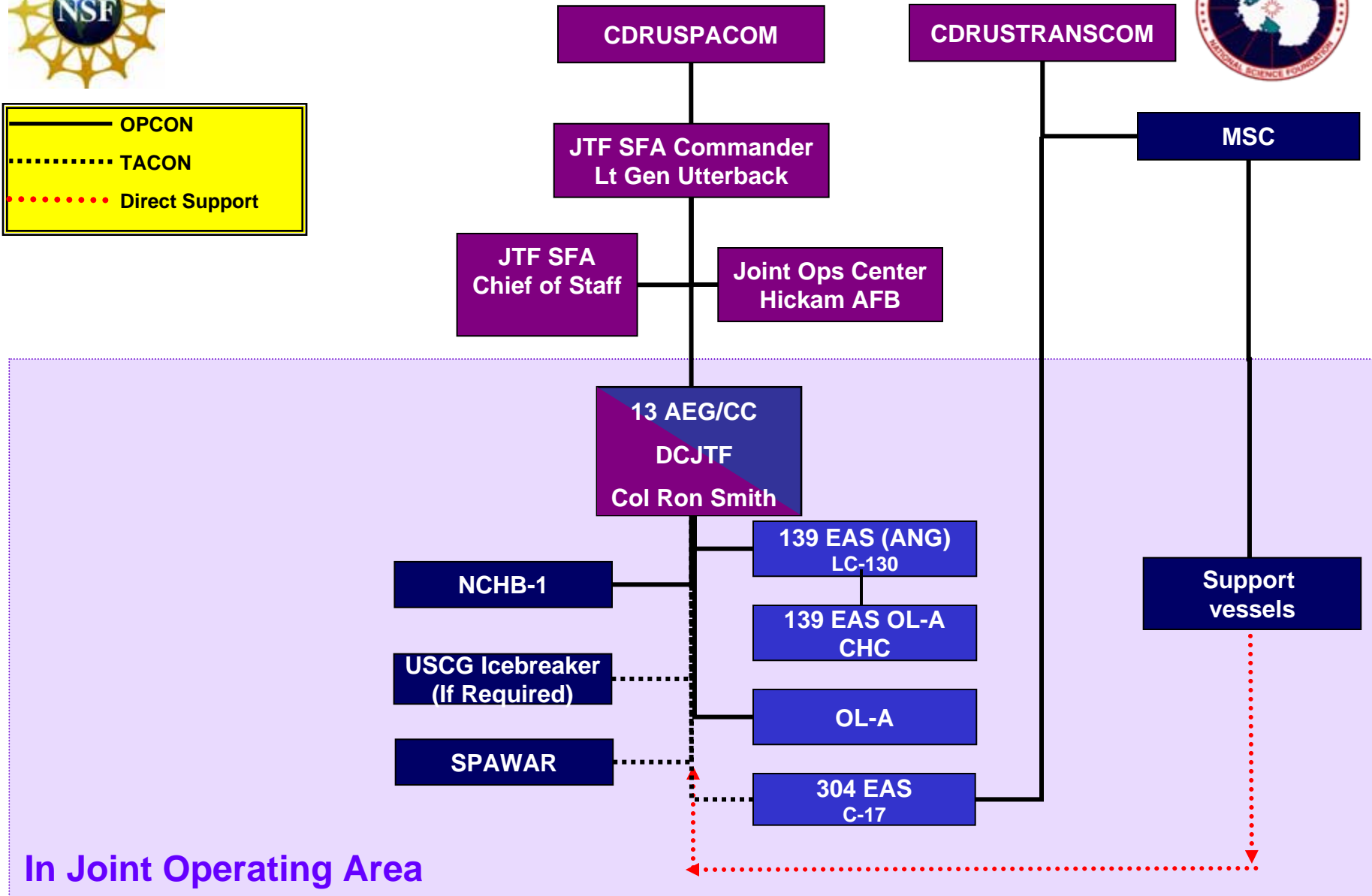
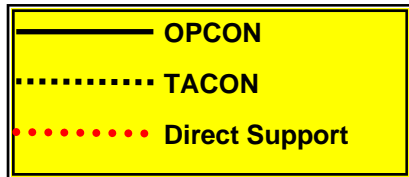


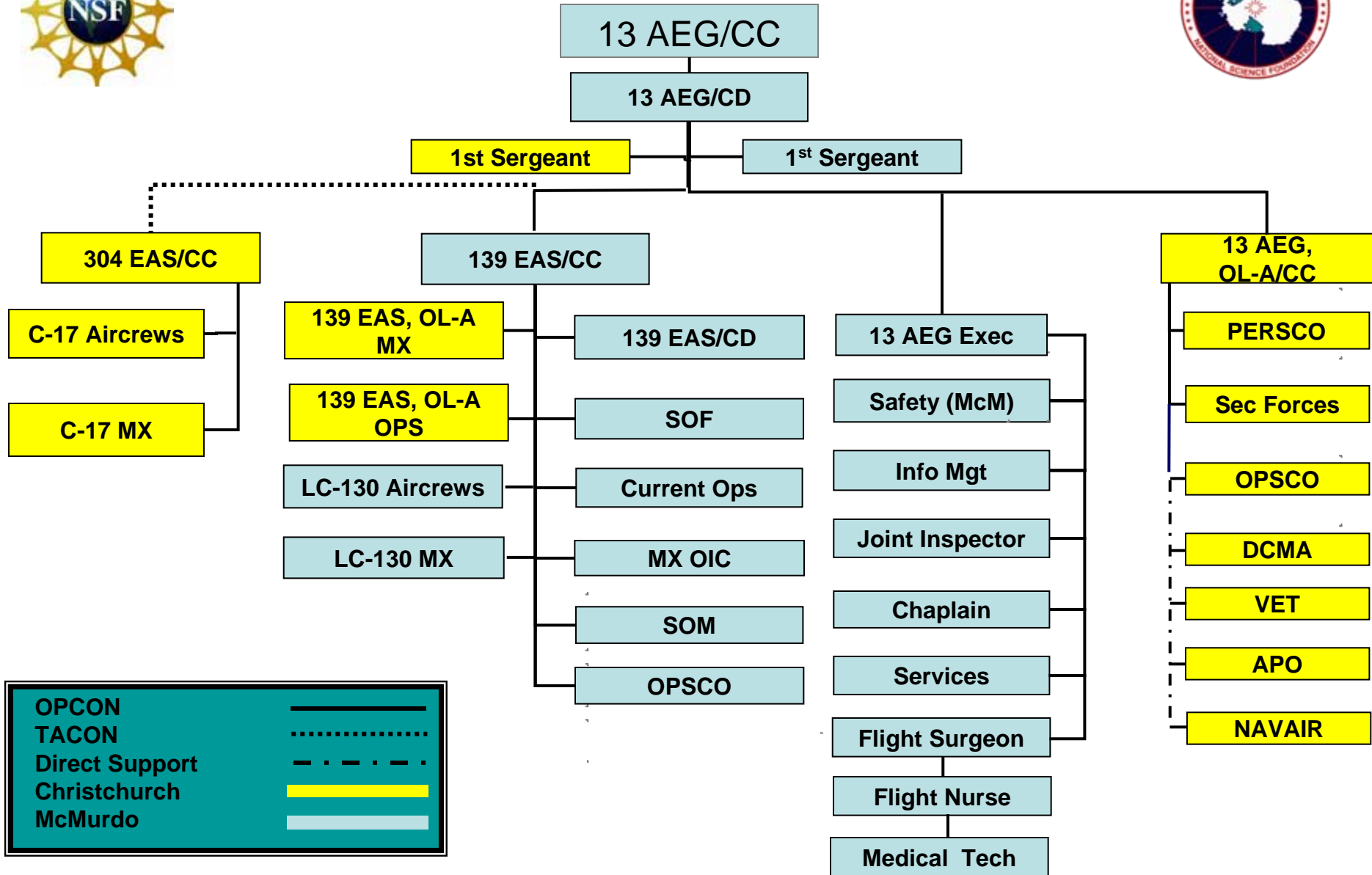
Antarctic Deployment



Joint Operating Area









Personnel



- Christchurch, NZ
 - 70 Military, 15 Civilian
 - Billeted in local hotels by the Antarctic Support Contractor (ASC)
- McMurdo Station
 - 125 Military, 44 Civilian
 - Billeted in Bldgs 202, 206 & 207 in coordination with the ASC



C-17 Operations



Capability: 120K lbs Cargo, Christchurch-McMurdo and return

07/08 Tasking 58 Missions/2 Airdrops

April 2008 – 1st extended season mission

08/09 Plan 37 Missions/5 Airdrops





LC-130 Operations



Capability: 26,000 lbs McMurdo-South Pole

410 On-continent Missions 07/08

- 9.1M lbs of cargo moved

305 South Pole Missions 07/08

- 7.9M lbs of cargo
- Maintenance reliability rate 96%

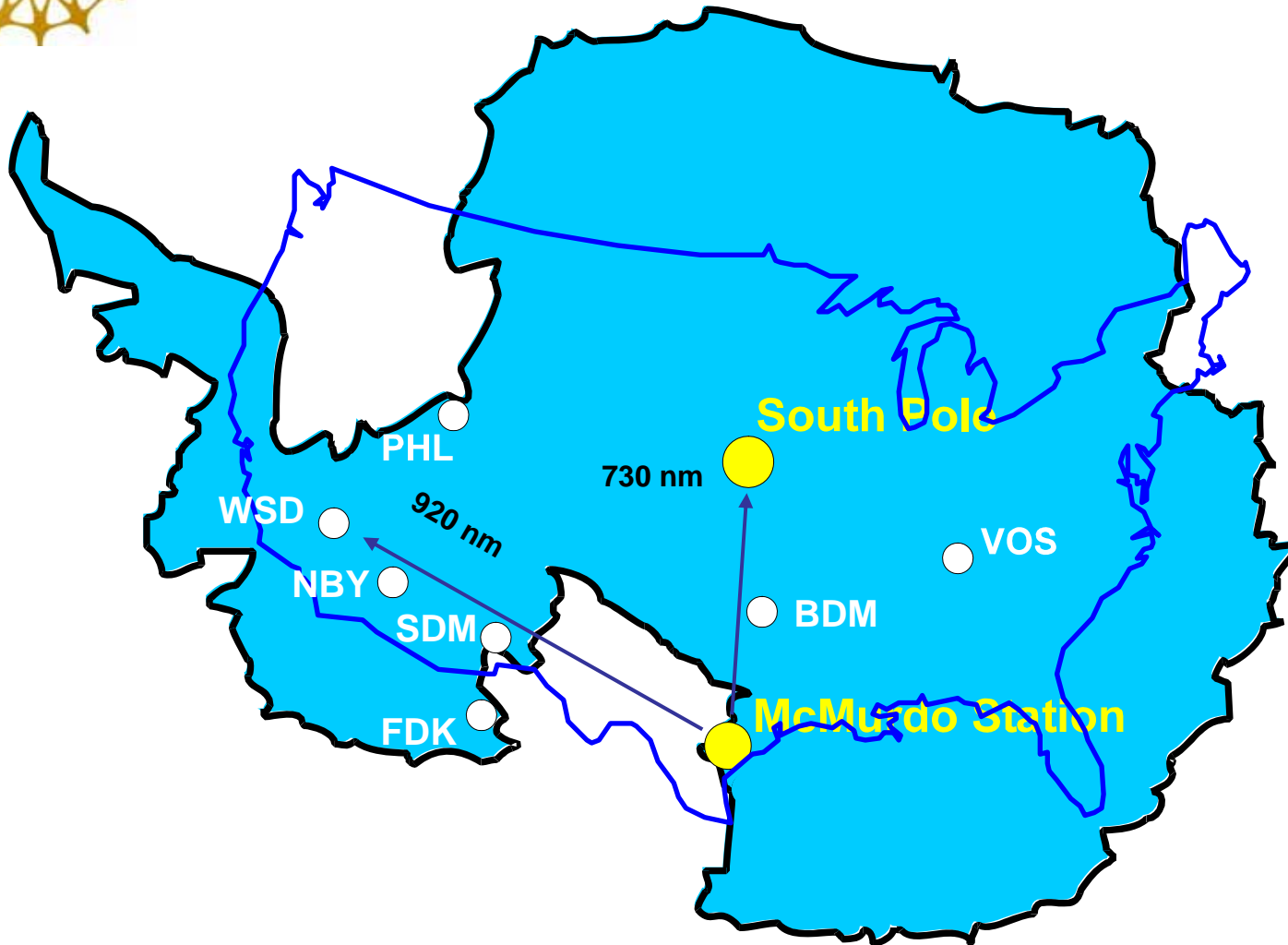
310 On-continent Missions Planned 08/09

Antarctic Support Contract Pre-Solicitation Conference

August 26 – 28, 2008



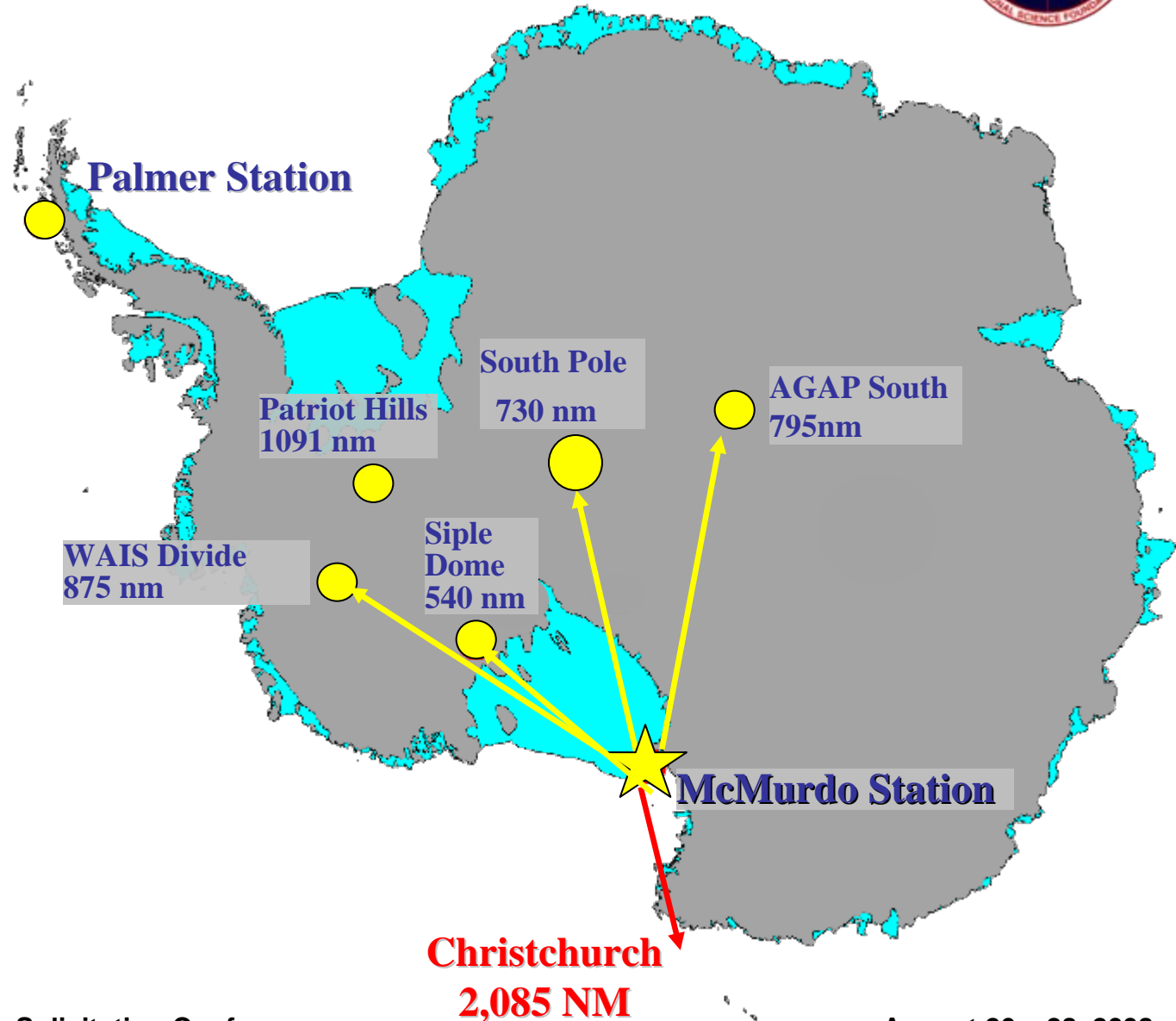
LC-130 On-Continent Airlift



- FY 09**
- 6 LC-130 Aircraft
 - 5-6 Missions/day
 - 10-12 hr crew day
 - 6 days/week
 - Rotator on Sunday
 - 24 Hr Ops
 - 300+ Ice Missions
 - 2300+ Flt Hrs

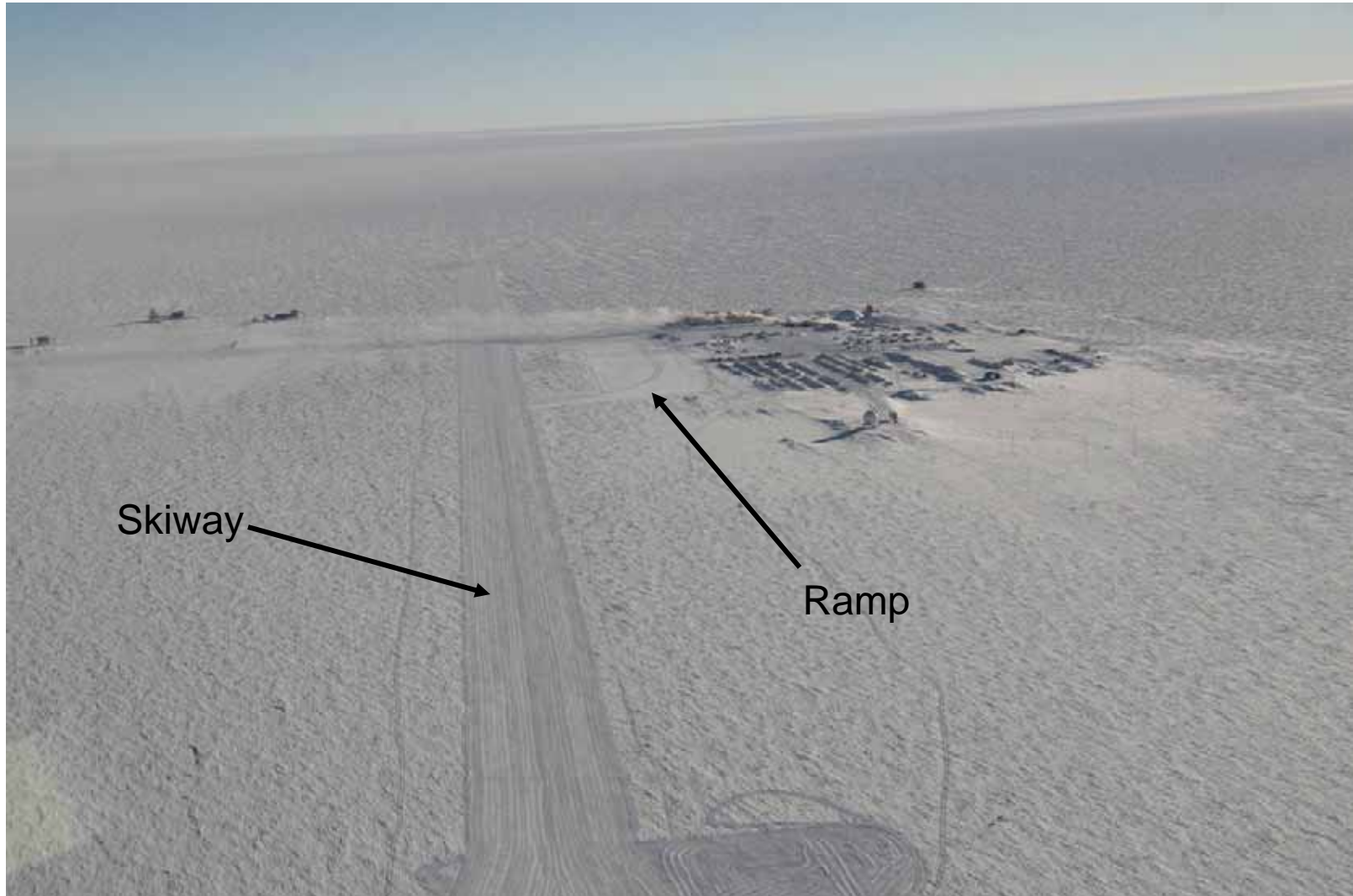


FY09 LC-130 Deep Field Landing Sites





South Pole Skiway





Unique Maintenance Challenges

Specialized Maintenance Skills



- No hangars, shelters, or de-ice chemicals
- Rely on ASC for Airfield Support





M/V American Tern



07/08

- Delivered 11.9 M lbs to McMurdo**
- Retro-loaded 8.8 M lbs**
- 59 x NCHB-1 (stevedores) personnel in concert with ASC support**
- Off-load/On-load in 6 days**



USNS GIANELLA



6.1 M Gallons of Fuel to McMurdo



QUESTIONS

