

- 1 NEW WET-PIPE SPRINKLER PROTECTION FOR LIGHT HAZARD PROTECTION (0.1 GPM/SQ. FT. OVER THE MOST REMOTE 1,500 SQ. FT.) WITH 5.6 K-FACTOR SPRINKLERS FOR CEILING HEIGHTS 30-FT OR LESS
- 2 NEW WET-PIPE SPRINKLER PROTECTION FOR ORDINARY HAZARD PROTECTION (0.2 GPM/SQ. FT. OVER THE MOST REMOTE 2,500 SQ. FT.) WITH 8.0 K-FACTOR SPRINKLERS FOR CEILING HEIGHTS 30-FT OR LESS
- 3 NEW WET-PIPE SPRINKLER PROTECTION FOR ORDINARY HAZARD PROTECTION (0.2 GPM/SQ. FT. OVER THE MOST REMOTE 2,500 SQ. FT.) WITH 11.2 K-FACTOR SPRINKLERS FOR CEILING HEIGHTS OVER 30 FT

[illegible]

ISSUE DATE:	06/13/2017
DESIGNED BY:	S.DUBIN
DRAWN BY:	S.DUBIN
CHECKED BY:	D.HUGHLEY
SUBMITTED BY:	
FILE NAME:	
SIZE:	
ANSI 'D'	

US ARMY CORPS OF ENGINEERS
LOUISVILLE DISTRICT
LOUISVILLE, KENTUCKY

 **WOOLPERT**



A JOINT VENTURE

PITTSBURGH AIR RESERVE STATION
CONSOLIDATED BUILDING
RENOVATIONS
PN: JLSS160003 / JLSS160005 / JLSS160007
BUILDING 417 - FIRST FLOOR FIRE
SPRINKLER PLAN - AREA B

SHEET ID

FX122

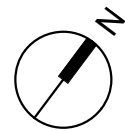
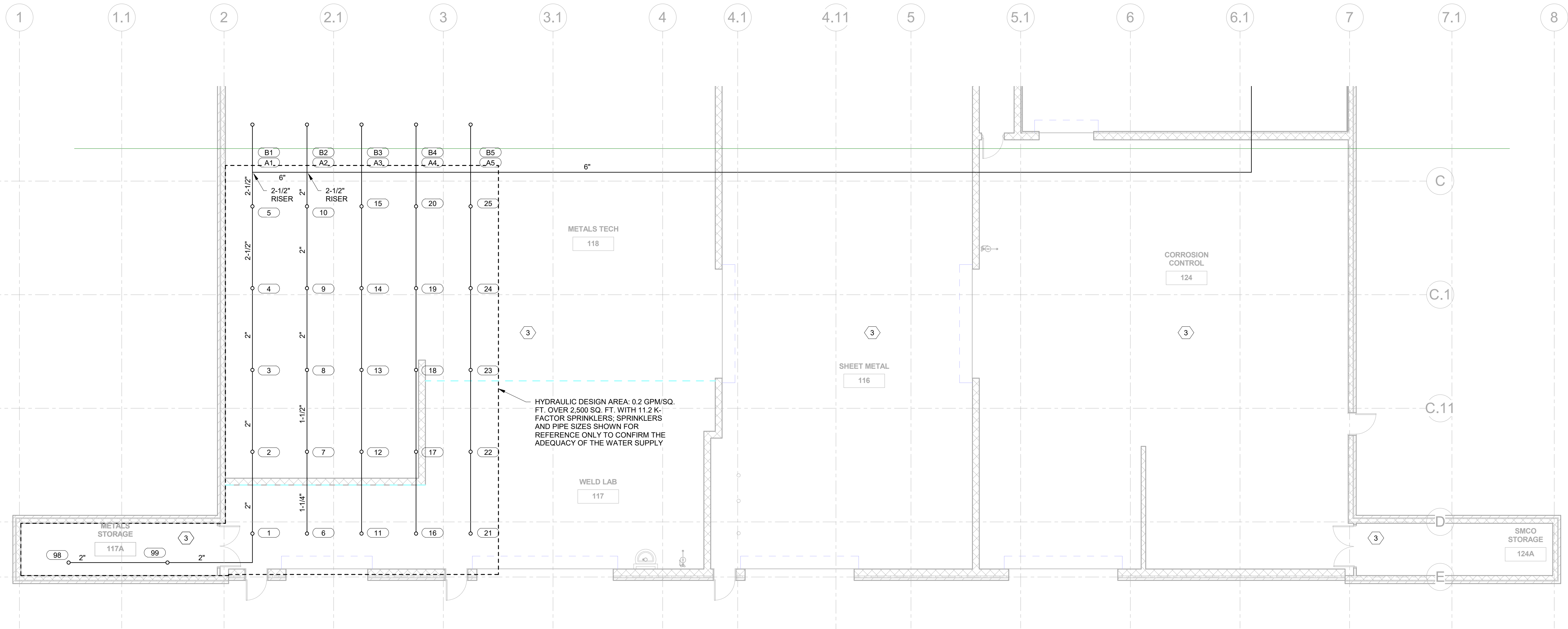
AS-BUILT



C

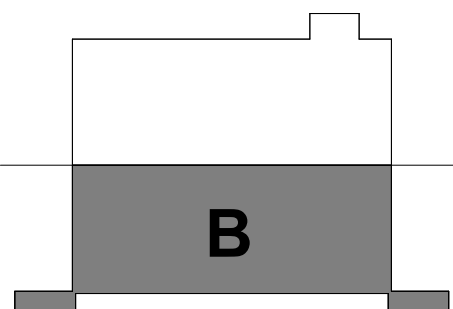
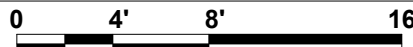
B

A



BUILDING 417 - FIRST FLOOR SPRINKLER PLAN - AREA B

SCALE: 1/8" = 1'-0"



KEY PLAN