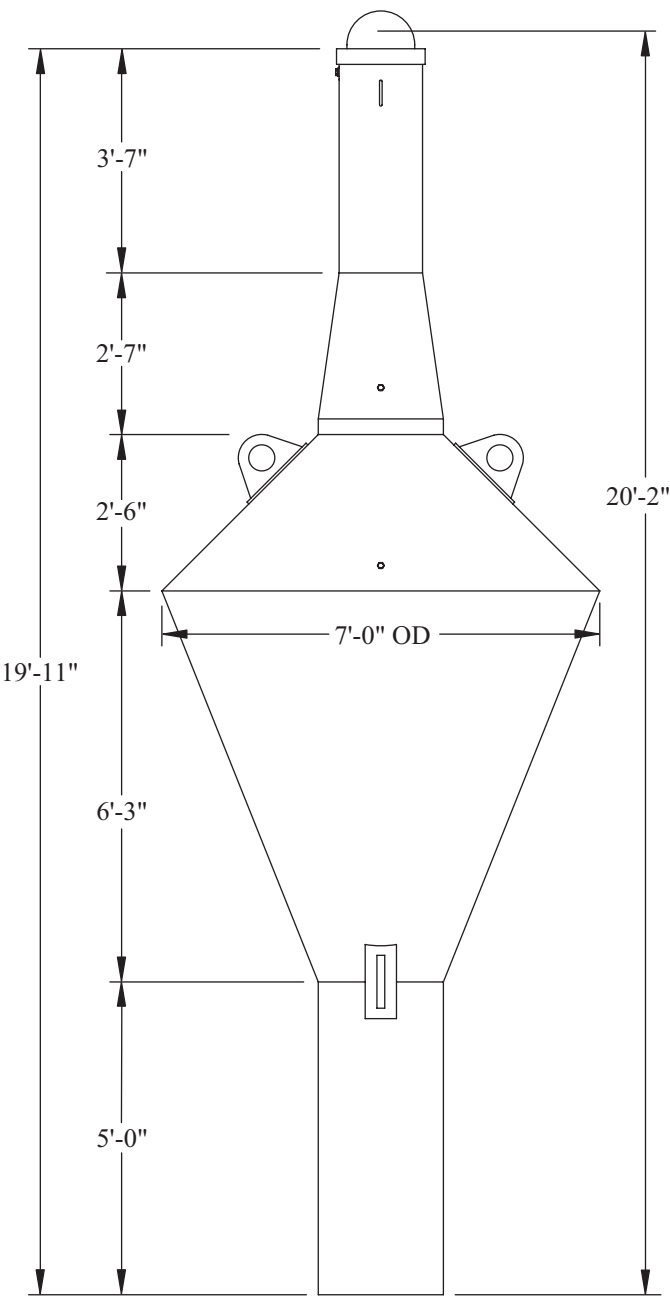


7X20LI. The 7X20LI is designed and constructed for use as a seasonal aid in semi-exposed locations subject to ice conditions. It is designed with special lighting and battery equipment to survive entrapment under the ice. Note that the buoy has no radar reflector and has a very small visual profile.

a. Standard Buoy Arrangements. 1962 Type 7X20LI.



Physical Characteristics. (no mooring)

Buoy Weight	6,500 lbs.
Buoy Draft	10 ft. 7. in.
Focal Height of Light	9 ft. 10 in.
Freeboard	3 ft. 1 in.
Minimum Freeboard	2 ft. 6 in.
Pounds-Per-Inch Immersion	170+

Related Equipment.

Optic Protection	Polycarbonate Dome
Mooring Bridle	1 1/4 in. x 15 ft.
Mooring Riser	1/2 in.
Mooring Chain	(From permanent aid)
Sinker	(From permanent aid)

Operational Characteristics. (nominal)

Daymark Visual Range	1.4 nm
Radar Range	0.5 nm
Mooring Depth (min.)	25 ft.

Maximum Mooring Depth.

Chain Size	Max Mooring Depth
1-1/2"	33'
1-1/4"	47'
1-1/8"	60'
1"	75'

Reference Documents. (use latest rev.)

G-SEC Drawing No. 120976
G-SEC Specification No. 464