

Section B - Supplies or Services and Prices

ITEM NO	SUPPLIES/SERVICES	QUANTITY	UNIT	UNIT PRICE	AMOUNT
0001	BLDG 1 Section G Reattach membrane FFP EPDM Roof- Building 1, Section G membrane is separating near the edges and shall be reattached. Approximately 155 LF shall be reattached. These areas are marked with arrows and red lines in Figure #1 (See SOW). (See SOW for extended description) FOB: Destination DWG NR: Roof 1 Sec. G PSC CD: Z2AA	1	Job		

NET AMT

ITEM NO	SUPPLIES/SERVICES	QUANTITY	UNIT	UNIT PRICE	AMOUNT
0002	Building 8 & Building 18 FFP Bittium sealant and labor to repair the blemishes. Building 8, Figure #3 (See SOW) show the sections of Building 8. All four sections will have some items to address and are shown for illustrative purposes. Figure #4 (see SOW) indicates the location and type of damage to be repaired per section. Restore surfacing material. Building 18 (Section A) Figure in SOW shows the type of damage on the section of the roof to be repaired. Additional descriptive pictures of the damage are provided in the Appendix. (See SOW for extended description) FOB: Destination DWG NR: Bldg 8 & Bldg 18 PSC CD: Z2AA	1	Job		

NET AMT

ITEM NO	SUPPLIES/SERVICES	QUANTITY	UNIT	UNIT PRICE	AMOUNT
---------	-------------------	----------	------	------------	--------

0003 Building 20 SectionA

FFP

Inspect and replace loose fasteners. Clean and prepare surface, re-glue seam and seal edge. elastomeric coating including labor. SOW indicate the location and type of damage to be repaired. (See SOW for extended description)

FOB: Destination

DWG NR: Bldg 20 Sec. A

PSC CD: Z2AA

NET AMT

ITEM NO	SUPPLIES/SERVICES	QUANTITY	UNIT	UNIT PRICE	AMOUNT
---------	-------------------	----------	------	------------	--------

0004 Building 26

FFP

Building 26, Section B membrane is separating at the edges. Approximately 120 LF shall be reattached. These areas are marked with red lines in Figure #2 (See SOW). (See SOW for extended description)

FOB: Destination

DWG NR: Bldg 26

PSC CD: Z2AA

NET AMT

ITEM NO	SUPPLIES/SERVICES	QUANTITY	UNIT	UNIT PRICE	AMOUNT
1001		1	Job		
OPTION	Building 7 (Section C) FFP Inspection, Repair Labor, Metal Strip. Figures in the SOW indicate the location and type of damage to be repaired. (See SOW for extended description) FOB: Destination DWG NR: Bldg 7 Sec C PSC CD: Z2AA				

NET AMT

ITEM NO	SUPPLIES/SERVICES	QUANTITY	UNIT	UNIT PRICE	AMOUNT
1002		1	Job		
OPTION	Building 42 FFP Inspect and replace loose fasteners, clean and prepare surface, re-glue seam and seal edge, slastomeric coating including labor. (See SOW for extended description) FOB: Destination DWG NR: Bldg 42 PSC CD: Z2AA				

NET AMT

NET AMT

If the contract is entered into on or after January 30, 2022, or the contract is renewed or extended (e.g., an option is exercised) on or after January 30, 2022:	Executive Order 14026 generally applies to the contract. The contractor must pay all covered workers at least \$16.20 per hour (or the applicable wage rate listed on this wage
---	---

	determination, if it is	
	higher) for all hours	
	spent performing on the	
	contract in 2023.	
<hr/>		
If the contract was awarded on	Executive Order 13658	
or between January 1, 2015 and	generally applies to the	
January 29, 2022, and the	contract.	
contract is not renewed or	The contractor must pay all	
extended on or after January	covered workers at least	
30, 2022:	\$12.15 per hour (or the	
	applicable wage rate listed	
	on this wage determination,	
	if it is higher) for all	
	hours spent performing on	
	that contract in 2023.	
<hr/>		

The applicable Executive Order minimum wage rate will be adjusted annually. If this contract is covered by one of the Executive Orders and a classification considered necessary for performance of work on the contract does not appear on this wage determination, the contractor must still submit a conformance request.

Additional information on contractor requirements and worker protections under the Executive Orders is available at <http://www.dol.gov/whd/govcontracts>.

Modification Number Publication Date

0	01/06/2023
1	01/13/2023
2	01/27/2023
3	02/24/2023

ASBE0040-002 05/01/2022

Rates Fringes

Asbestos/Insulator Worker

SCOPE OF WORK: includes

application of all

insulating materials,

protective, coverings,

coating and finishing to

all types of mechanical

systems.....\$ 38.40 24.42

HAZARDOUS MATERIAL HANDLER

Duties limited to

preparation wetting;

stripping; removal;

scrapping; vacuuming;

bagging; and disposing of

all insulation materials,

whether they contain
asbestos or not from
mechanical systems.....\$ 38.40 24.42

BOIL0197-002 01/01/2021

	Rates	Fringes
BOILERMAKER.....	\$ 38.59	26.00

BRNY0002-019 07/01/2018

	Rates	Fringes
BRICKLAYER		
BRICKLAYERS, STONE MASONS, CEMENT MASONS, PLASTERERS, POINTERS, CAULKERS & CLEANERS.....	\$ 36.19	20.48
HEAVY & HIGHWAY CONSTRUCTION		
CEMENT MASONS.....	\$ 37.23	19.51
MARBLE, TILE & TERRAZZO FINISHERS.....	\$ 27.16	16.85
MARBLE, TILE & TERRAZZO WORKERS.....	\$ 34.66	19.58

CARP0279-006 07/01/2019

	Rates	Fringes
Carpenters:		
HEAVY AND HIGHWAY CONSTRUCTION (COLUMBIA AND GREENE COUNTIES)		
Carpenters, Millwrights, Pile Drivers.....	\$ 38.09	29.08

CARP0291-005 07/01/2022

	Rates	Fringes
Carpenters:		
SARATOGA COUNTY		
BUILDING.....	\$ 34.00	23.18
WASHINGTON COUNTY		
BUILDING.....	\$ 29.00	22.46

PAID HOLIDAYS: Labor Day, provided the employee has been on
the payroll the calendar week or any of the holiday week
preceding the holiday and works the day after the holiday.

CARP0291-008 07/01/2022

ALBANY, FULTON, MONTGOMERY, RENSSELAER, SCHENECTADY AND
SCHOHARIE COUNTIES

	Rates	Fringes
--	-------	---------

Carpenters:

BUILDING CONSTRUCTION

(Excluding Montgomery

County)

Carpenters & Soft Floor

Layers.....\$ 34.00 23.18

Piledriver.....\$ 31.68 20.60

HEAVY & HIGHWAY

CONSTRUCTION

Carpenters.....\$ 37.52 23.55

CARP0291-010 07/01/2022

	Rates	Fringes
--	-------	---------

Carpenters:

CARPENTERS.....\$ 37.52 23.55

DIVER TENDERS.....\$ 34.02 21.10

DIVERS (Dry Day).....\$ 38.52 23.55

DIVERS.....\$ 62.52 23.55

PILEDRIERS.....\$ 33.02 21.10

ELEC0236-001 06/01/2022ALBANY; COLUMBIA; FULTON; GREENE (that portion North of a line
following the south limits of the city of Catskill);
MONTGOMERY; RENSSELAER, SARATOGA; SCHENECTADY; SCHOHARIE;
WASHINGTON

	Rates	Fringes
--	-------	---------

ELECTRICIAN.....\$ 45.00 30.59

ELEC0363-004 04/01/2022

GREENE COUNTY (Portion of)

	Rates	Fringes
--	-------	---------

ELECTRICIAN.....\$ 44.00 3%+36.67+a

FOOTNOTE:

a. Paid Holidays: New Year's Day, President's Day, Memorial
Day, Fourth of July, Labor Day, Presidential Election Day,
Veteran's Day, Thanksgiving Day, Day after Thanksgiving,
Christmas Day

ELEC1249-003 05/04/2020

	Rates	Fringes
--	-------	---------

ELECTRICIAN (LINE
CONSTRUCTION: LIGHTING AND
TRAFFIC SIGNAL Including any
and all Fiber Optic Cable
necessary for Traffic Signal
Systems, Traffic Monitoring
systems and Road Weather
information systems)

Flagman.....	\$ 27.72	6.75%+33.90
Groundman (Truck Driver)....	\$ 36.96	6.75%+33.90
Groundman Truck Driver (tractor trailer unit).....	\$ 39.27	6.75%+33.90
Lineman & Technician.....	\$ 46.20	6.75%+33.90
Mechanic.....	\$ 36.96	6.75%+33.90

FOOTNOTE:

a. New Year's Day, Memorial Day, Independence Day, Labor Day, Thanksgiving Day, Christmas Day, plus President's Day, Good Friday, Decoration Day, Election Day for the President of the United States and Election Day for the Governor of the State of New York, provided the employee works the day before or the day after the holiday.

ELEC1249-004 05/03/2021

	Rates	Fringes
--	-------	---------

ELECTRICIAN (Line
Construction)

Overhead and underground
distribution and
maintenance work and all
overhead and underground
transmission line work
including any and all
fiber optic ground wire,
fiber optic shield wire or
any other like product by
any other name
manufactured for the dual
purpose of ground fault
protection and fiber optic
capabilities :

Flagman.....	\$ 32.82	7%+34.40
Groundman digging machine operator.....	\$ 49.23	7%+34.40
Groundman truck driver (tractor trailer unit)....	\$ 46.50	7%+34.40
Groundman Truck driver....	\$ 43.76	7%+34.40

Lineman and Technician.....	\$ 54.70	7%+35.40
Mechanic.....	\$ 43.76	7%+34.40
Substation:		
Cable Splicer.....	\$ 60.17	7%+35.40
Flagman.....	\$ 32.82	7%+34.40
Ground man truck driver....	\$ 43.76	7%+34.40
Groundman digging machine operator.....	\$ 49.23	7%+34.40
Groundman truck driver (tractor trailer unit)....	\$ 46.50	7%+34.40
Lineman & Technician.....	\$ 54.70	7%+35.40
Mechanic.....	\$ 43.76	7%+34.40
Switching structures; railroad catenary installation and maintenance, third rail type underground fluid or gas filled transmission conduit and cable installations (including any and all fiber optic ground product by any other name manufactured for the dual purpose of ground fault protection and fiber optic capabilities), pipetype cable installation and maintenance jobs or projects, and maintenance bonding of rails; Pipetype cable installation		
Cable Splicer.....	\$ 61.62	7%+35.40
Flagman.....	\$ 33.61	7%+34.40
Groundman Digging Machine Operator.....	\$ 50.42	7%+34.40
Groundman Truck Driver (tractor-trailer unit)....	\$ 47.62	7%+34.40
Groundman Truck Driver....	\$ 44.82	7%+34.40
Lineman & Technician.....	\$ 56.02	7%+35.40
Mechanic.....	\$ 44.82	7%+34.40

FOOTNOTE:

a. PAID HOLIDAYS: New Year's Day, Presidents' Day, Memorial Day, Good Friday, Independence Day, Labor Day, Thanksgiving Day, Christmas Day, and Election Day for the President of the United States and Election Day for the Governor of New York State, provided the employee works two days before or two days after the holiday.

ELEC1249-007 05/02/2022

COLUMBIA COUNTY

Rates Fringes

ELECTRICIAN (LIGHTING AND
TRAFFIC SIGNAL INCLUDING ANY
AND ALL FIBER OPTIC CABLE
NECESSARY FOR THE TRAFFIC
SIGNAL SYSTEMS, TRAFFIC
MONITORING SYSTEMS AND ROAD
WEATHER INFORMATION SYSTEMS)

Flagman.....	\$ 28.91	7%+34.90
Groundman Digging Machine Operator.....	\$ 43.37	7%+34.90
Groundman Truck Driver (Tractor-trailer unit).....	\$ 40.96	7%+34.90
Groundman Truck Driver.....	\$ 38.55	7%+34.90
Lineman and Technician.....	\$ 48.19	7%+36.90
Mechanic.....	\$ 38.55	7%+34.90

PAID HOLIDAYS:

a. Memorial Day, New Year's Day, President's Day, Good Friday, Decoration Day, Independence Day, Labor Day, Thanksgiving Day, Christmas Day, and Election Day for the President of the United States and Election Day for the Governor of New York State, provided the employee works two days before or two days after the holiday.

ELEC1249-008 01/01/2022

Rates Fringes

ELECTRICIAN (Line
Construction)

TELEPHONE, CATV FIBEROPTICS CABLE AND EQUIPMENT		
Cable splicer.....	\$ 36.28	3%+5.14
Groundman.....	\$ 18.25	3%+5.14
Installer Repairman- Teledata Lineman/Technician- Equipment Operator.....	\$ 34.43	3%+5.14
Tree Trimmer.....	\$ 28.25	3%+10.23

a. New Year's Day, President's Day, Good Friday, Decoration Day, Independence Day, Labor Day, Veteran's Day, Thanksgiving Day, Day after Thanksgiving, Christmas Day.

ELEV0035-001 01/01/2023

ALBANY; COLUMBIA (Towns of Claverack, Hillsdale, Ghent, Stockport, Austerlitz, Canaan, New Lebanon, Chatham, Kinderhook, Styvesant and Greenport); FULTON; GREENE (Towns of

Durham, Greenville, New Baltimore, Coxsackie and Athens);
MONTGOMERY, RENSSELAER, SARATOGA, SCHENECTADY, SCHOHARIE AND
WASHINGTON COUNTIES

Rates Fringes

Elevator Constructor.....\$ 53.02 37.335+a+b

FOOTNOTE:

a. Vacation: 6%/under 5 years based on regular hourly rate for
all hours worked. 8%/over 5 years based on regular hourly
rate for all hours worked.

b. PAID HOLIDAYS: New Year's Day; Memorial Day; Independence
Day; Labor Day; Veterans' Day; Thanksgiving Day; the Friday
after Thanksgiving Day; and Christmas Day.

ELEV0138-004 01/01/2023

COLUMBIA COUNTY (THE TOWNS OF ANCRAM, CLERMONT, COPAKE,
GALLATIN, GERMANTOWN, LIVINGSTON, AND TAGHKANIC); GREEN COUNTY
(THE TOWNS OF HUNTER AND CATSKILL)

Rates Fringes

ELEVATOR MECHANIC.....\$ 67.35 37.335+a+b

FOOTNOTE:

a. Vacation: 6%/under 5 years based on regular hourly rate for
all hours worked. 8%/over 5 years based on regular hourly
rate for all hours worked.

b. PAID HOLIDAYS: New Year's Day; Memorial Day; Independence
Day; Labor Day; Veterans' Day; Thanksgiving Day; the Friday
after Thanksgiving Day; and Christmas Day.

ENGI0158-008 07/01/2022

BUILDING

EXCLUDING MONTGOMERY COUNTY

Rates Fringes

POWER EQUIPMENT OPERATOR

GROUP A(1).....	\$ 47.81	30.74
GROUP A.....	\$ 47.32	30.74
1.....	\$ 49.06	30.74
2.....	\$ 50.06	30.74
GROUP B.....	\$ 46.30	30.74
GROUP C.....	\$ 43.40	30.74

Hazardous work - Anytime Operating Engineers are involved

with level C or above, \$2.50 per hour over regular rate.

FOOTNOTE:

a. Paid Holidays: New Years Day, Memorial Day, Independence Day, Labor Day, Thanksgiving Day, Christmas Day.

POWER EQUIPMENT OPERATOR CLASSIFICATIONS (BUILDING):

GROUP A(1): Crane, hydraulic cranes, tower crane, locomotive crane, piledriver, cableway, derricks, whirlies, dragline, boom truck (over 5 tons)

GROUP A(1): Crane Premiums:

- 1 over 150'- \$1.00
- 2 over 200'- \$2.00

GROUP A: Shovel, All Excavators (including rubber tire full swing), gradalls, power road grader, all CMI equipment, front-end rubber tire loader, tractor-mounted drill (quarry master), mucking machine, concrete central mix plant, concrete pump, Belcrete system, automated asphalt concrete plant and tractor road paver, boom truck (5 tons and under), maintenance engineer, self contained crawler, drill-hydraulic rock drill.

GROUP B: Backhoe, (rubber-tired backhoe/loader combination), bulldozer, pushcat, tractor, traxcavator, scraper, LeTourneau grader, form fine grader, road roller, blacktop roller, blacktop spreader, power brooms, sweepers, trenching machine, Barber Green loader, side booms, hydrohammer, concrete spreader, concrete finishing machine, one drum hoist, power hoisting (single drum), hoist - two drum or more, three drum engine, power hoisting (two drum and over), two drum and swinging engine, three drum swinging engine, hod hoist, A-L frame winches, cord and well drillers (one drum), post hole digger, model CHB Vibro-Tamp or similar machine, batch bin and plant operator, dinkey locomotive, skid steer loader, track excavator 5/8 cu. yd. or smaller

GROUP C: Fork lift, high lift, lull, oiler, fireman and heavy- duty greaser, boilers, and steam generators, pump, vibrator, motor mixer, air compressor, dust collector, welding machine, well point, mechanical heater, generators, temporary light plants, concrete pumps, electric submersible pump 4" and over, murphy type diesel generator, conveyor, elevators, concrete mixer and belcrete power pack (belcrete system), seeding, and mulching machines, pumps

ENGI0158-026 07/01/2022

HEAVY & HIGHWAY

Rates Fringes

Power equipment operators:

GROUP 1.....	\$ 49.42	29.55
GROUP 2.....	\$ 48.51	29.55
GROUP 3.....	\$ 45.94	29.55
GROUP 4.....	\$ 53.42	29.55
GROUP 5.....	\$ 52.42	29.55
GROUP 6.....	\$ 51.42	29.55
GROUP 7.....	\$ 51.03	29.55

POWER EQUIPMENT OPERATOR CLASSIFICATIONS (HEAVY & HIGHWAY):

GROUP 1: Asphalt Curb Machine, Self Propelled, Slipform, Automated Concrete Spreader (CMI Type), Automatic Fine Grader, Backhoe (Except Tractor Mounted, Rubber Tired), Backhoe Excavator Full Swing (CAT 212 or similar type), Back Filling Machine, Belt Placer (CMI Type), Blacktop Plant (Automated), Boom truck , Cableway, Caisson Auger, Central Mix Concrete Plant (Automated), Concrete Curb Machine, Self Propelled, Slipform, Concrete Pump, Crane, Cherry Picker, Derricks (steel erection), Dragline, Overhead Crane (Gantry or Straddle type), Pile Driver, Truck Crane, Directional Drilling Machine, Dredge, Dual Drum Paver, Excavator (All Purpose Hydraulically Operated) (Gradall or Similar), Front End Loader (4 cu. yd. and Over), Head Tower (Sauerman or Equal), Hoist (Two or Three Drum), Holland Loader, Maintenance Engineer, Mine Hoist, Mucking Machine or Mole Pavement Breaker(SP) Wertgen; PB-4 and similar type, Power Grader, Profiler (over 105 H.P.) Quad 9, Quarry Master (or equivalent), Scraper, Fireman, Form Tamper, Grout Pump, Guniting Machine, Hammers (Hydraulic self-propelled), Hydra-Spiker, ride-on, Hydraulic Pump (jacking system), Hydro-Blaster (Water), Mulching Machine, Oiler, Parapet Concrete or Pavement, Shovel, Side Boom, Slip Form Paver, Tractor Drawn, BeltType Loader, Truck or Trailer Mounted Log , Chipper (Self Feeder), Tug Operator (Manned Rented Equipment Excluded), Tunnel Shovel

GROUP 2: Asphalt Paver, Backhoe (Tractor Mounted, Rubber Tired), Bituminous Recycler Machine, Bituminous Spreader and Mixer, Blacktop Plant (NonAutomated), Blast or Rotary Drill (Truck or Tractor Mounted), Boring Machine, Cage Hoist, Central Mix Plant (NonAutomated) and All Concrete Batching Plants, Cherry Picker (5 tons capacity and under), Concrete Paver (Over 16S), Crawler Drill, Self-contained, Crusher, Diesel Power Unit, Drill Rigs, Tractor Mounted, Front End Loader (Under 4 cu. yd.), Greaseman/Lubrication Engineer, HiPressure Boiler (15 lbs. and over), Hoist (One Drum), Hydro-Axe, Kolman Plant Loader and Similar Type Loaders, L.C.M. Work Boat Operator, Locomotive Mixer (for stabilized base selfpropelled), Monorail Machine, Plant Engineer, Profiler (105 H.P. and under), Grinder, Post Hole Digger and Post Driver, Power Broom (towed), Power Heaterman, Power Sweeper, Revinius Widener, Roller (Grade

and Fill), Scarifier, ride-on, Shell Winder, Skid steer loader (Bobcat or similar), Span-Saw, ride-on, Steam Cleaner, Pug Mill, Pump Crete Ready Mix Concrete Plant Refrigeration Equipment (for soil stabilization) Road Widener, Roller (all above subgrade), Sea Mule, Self-contained Ride-on Rock Drill, Excluding Air-Track Type Drill, Skidder, Tractor with Dozer and/or Pusher, Trencher. Tugger Hoist, Vermeer saw (ride on, any size or type), Winch, Winch Cat

GROUP 3: A Frame Winch Hoist on Truck , Articulated Heavy Hauler, Aggregate Plant, Asphalt or Concrete Grooving, Machine (ride on), Ballast Regulator, Ride-on Boiler (used in conjunction with production), Bituminous Heater, self-propelled, Boat (powered), Cement and Bin Operator, Compressors, Dust Collectors, Fork Lift, Generators, Pumps, Welding Machines, Light Plants, Heaters (hands-off equipment), Concrete Pavement Spreader and Finisher, Concrete Paver or Mixer (16S and under), Concrete Saw (self-propelled), Conveyor, Deck Hand, Directional Drill Machine Locator, Drill, (Core), Drill, (Well,) Farm Tractor with accessories, Fine Grade Machine, Tamper, ride-on, Tie Extractor, ride-on, Tie Handler, ride-on, Tie Insertor, ride-on, Tie Spacer, ride-on, Tire Repair, Track Liner, ride-on, Tractor, Tractor (with towed accessories), Vibratory Compactor, Vibro Tamp, Well Point

GROUP 4: Tower Cranes

GROUP 5: Cranes 50 tons and over

GROUP 6: Cranes 49 tons and below

GROUP 7: Master Mechanic

FOOTNOTE:

a. PAID HOLIDAYS: New Year's Day, Memorial Day, Independence Day, Labor Day, Thanksgiving Day, and Christmas Day

* IRON0012-011 07/01/2022

ALBANY; COLUMBIA; FULTON (Albin, Bleecker, Broad, Johnstown, Mayfield, Northampton and Perth); GREENE, MONTGOMERY (Amsterdam, Charleston, Florida, Glen, Mohawk and Root); RENSSELAER, SARATOGA; SCHENECTADY; SCHOHARIE; and WASHINGTON COUNTIES:

Rates Fringes

Ironworkers:

Sheeter, Bucker-up.....\$ 33.75	26.53
Sheeter.....\$ 33.75	26.53

Structural, Ornamental,
 Rodman, Machinery Mover,
 Rigger, Fence Erector,
 Reinforcing, Stone
 Derrickmen.....\$ 33.50 26.53

 IRON0440-007 07/01/2022

FULTON (Twps. of Caroga, Ephratah, Oppenheim, Stratford);
 MONTGOMERY (Twps of Canajoharie, Minden, Palatine, St.
 Johnsville):

Rates Fringes

IRONWORKER

Structural, Ornamental,
 Rodman, Machinery Mover,
 Rigger, Fence Erector,
 Reinforcement, and Stone
 Derrickman.....\$ 31.25 29.19

 LABO0017-001 07/01/2019

COLUMBIA COUNTY (Twps of Greenport, Claverack, Clermont,
 Germantown, Livingston, Hillsdale, Taghkanic, Gallatin, Copake,
 Ancram, Philmont and the City of Hudson)

Rates Fringes

LABORER

COLUMBIA COUNTY (Townships
 of Greenport, Claverack,
 Clermont, Germantown,
 Livingston, Hillsdale,
 Taghkanic, Gallatin,
 Copake, Ancram, Philmont,
 and the City of Hudson)
 (Asbestos, lead, toxic and
 hazardous waste abatement
 and any other
 environmental related
 work) HEAVY & HIGHWAY
 GROUP 1:.....\$ 38.90 27.15+a
 GROUP 2:.....\$ 43.15 27.15+a
 GREENE COUNTY (Township of
 Catskill) HEAVY & HIGHWAY:
 GROUP 1:.....\$ 34.15 27.15+a
 GROUP 2:.....\$ 38.90 27.15+a
 GROUP 3:.....\$ 43.15 27.15+a
 GROUP 4:.....\$ 48.00 27.15+a
 TUNNEL, SHAFT & CAISSON
 WORK
 GROUP 1.....\$ 48.05 29.50+a

For HEAVY & HIGHWAY CLASSIFICATIONS in COLUMBIA COUNTY
(Townships of Greenport, Claverack, Clermont, Germantown,
Livingston, Hillsdale, Taghkanic, Gallatin, Copake, Ancram,
Philmont and the City of Hudson)

HEAVY & HIGHWAY CLASSIFICATIONS

GROUP 1: Asbestos, toxic, bio-remediation,
phyto-remediation, lead or hazardous material abatement
when protective equipment and clothing are not required

GROUP 2: Asbestos, toxic, bio-remediation,
phyto-remediation, lead or hazardous material abatement
when protective clothing and equipment is required

For HEAVY & HIGHWAY CLASSIFICATIONS in GREENE COUNTY
(Township of Catskill)

FOOTNOTE:

a. PAID HOLIDAYS: New Years Day, President's Day, Memorial Day, Independence Day, Lincoln's Birthday, Labor Day, Election Day, Veterans Day, Thanksgiving Day, Christmas Day, provided the employee is an employee of the company prior to the scheduled holiday and reports to work the first day following the holiday unless prevented from doing so for legitimate reasons.

GROUP 1: Flagperson, gateperson

GROUP 2: General laborers, chuck tender, handling and distributing drinking water, distributing all tools and supplies of laborers, nipper, powder carrier, magazine tender, warehouse laborers, concrete man, vibrator man, mason tender, mortar man, spraying, brushing and covering of concrete for curing and preservative purposes, traffic striper, scaffold builder, concrete curb and sidewalk form setter; permanent traffic striping and reflective devices, placing and maintenance of all flares, cones, lights, signs, barricades, traffic patterns, and all temporary reflective type materials for traffic control, custodial work, traffic directors, temporary heat or light tenders, tool room, dewatering pump men, pitman, dumpmen, snow removal and firewatch, asphalt man, joint setter, signal person, pipelayer, pipe lining and relining, wellpoints, conduit and duct layer, wire puller, rip rap and dry stone layer, steel rod carrier, core drill, rock splitter, Hilti gun air or electric, jackhammer, bush hammer, pavement breaker, chipping hammer, wagon drill, air track, jib rig, joy drill, gunite and sand blasting, coal passer and other machine operators, power tool operator, sprayer and nozzle man on mulching and seeding machine, all guard rail and fence, all seeding and sod laying, all landscape work, grade checker, all bridge work, walk behind self-propelled

power saw, grinder, groover or similar type machine, walk behind tamper and roller of all types, salvage, stripping, wrecking and dismantling laborer (including barman, cutting torch and burner man), sheeting and shoring coming under laborers jurisdiction, bit grinder, operator of form pin puller and drivers, sandblasting, joint and jet sealer, filling and wiring baskets for gabion walls, permanent sign man, median barrier, sta-wall or similar type product, chain saw operator, railroad track laborer, waterproofer, pre-stressed and pre-cast concrete brick, block and stone pavers, power tools used to perform work usually done by laborers, power buggy and pumpcrete operator, fireproof, plaster and caustic pump, asbestos, toxic, bio-remediation, phyto-remediation, lead or hazardous materials abatement when protective clothing and equipment is not required, power brush cutter, retention liners, artificial turf, retaining walls, walk behind surface planer, welding related to laborers work, remote controlled equipment normally operated by laborers, all technician work including but not limited to stitching, seaming, heat welding, fireproof sprayer, mortar mixer, concrete finisher, form setter for concrete curbs and flatwork. Guniting nozzle man, stone cutters, granite stone layer, manhole, catch basin or inlet installing, laser men. Ground man on milling machine

GROUP 3 Ingersoll Rand heavy duty crawler-master HCMZ, any drill using a 4" or larger bit, asbestos, toxic, bio-remediation, phyto-remediation, lead or hazardous material abatement when protective clothing and equipment is required, all working foremen including grade, pipe concrete, clearing, blacktop, drill, paving and blaster etc., Hydraulic drill or similar, forklift for masonry only, Blaster and asphalt screedman

GROUP 4: Asbestos, toxic, lead or hazardous material abatement foreman

For TUNNEL, SHAFT & CAISSON WORK CLASSIFICATIONS

FOOTNOTE:

a. PAID HOLIDAYS: New Years Day, President's Day, Memorial Day, Independence Day, Labor Day, Election Day, Veterans Day, Thanksgiving Day, Christmas Day

GROUP 1: Laborer, Pit and Dumpman, Chuck Tender, Brakeman and Powderman;
Miner and all machine men, Safety Miner, all shaft work, caisson work, drilling, blow pipe, all air tools, tugger, scaling, nipper gunniting from pot to nozzle, bit grinder, signal man (top and bottom), shield driven tunnel, mixed face and soft ground liner plate tunnel in free air

LABO0035-001 07/01/2017

FULTON (TWPS OF CAROGA, EPHRATA, OPPENHEIM, AND STRAFORD);
MONTGOMERY (TWPS OF CANAJOHARIE, MINDEN AND PALATINE, ROOT AND
ST. JOHNSVILLE)

	Rates	Fringes
Laborers Building Construction		
Asbestos Removal.....	\$ 24.00	20.64+a
Blasters, Form Setters, MotorBuggy Operator (Rider Type).....	\$ 23.00	20.64+a
Hazardous Waste Removal Hazardous waste removal includes wetting, stripping, removal, scrapping, vacuuming, bagging and disposing of all insulation materials, whether they contain asbestos or not, from mechanical systems.....	\$ 24.00	20.64+a
HEAVY & HIGHWAY:		
GROUP 1:.....	\$ 28.05	23.74+a
GROUP 2:.....	\$ 28.25	23.74+a
GROUP 3:.....	\$ 28.45	23.74+a
GROUP 4:.....	\$ 28.65	23.74+a
Laborers.....	\$ 22.50	20.64+a
Pipelayers, Motor Mixers, Motor Buggy Operator (Walk Behind) Power Lift (Walk Behind).....	\$ 22.65	20.64+a
Wagon Drill Operator.....	\$ 22.90	20.64+a

FOOTNOTE:

a. PAID HOLIDAYS: New Year's Day, Memorial Day, Independence
Day, Labor Day, Thanksgiving Day and Christmas Day.

GROUP 1: Common Laborers, Flagman, Outboard and Hand boats

GROUP 2: Bull Float, Chain Saw, Concrete aggregate bin,
Concrete Bootman, Gin Buggy, Hand or Machine Vibrator,
Jackhammer, Mason Tender, Mortar Mixer, Pavement Breaker,
Handlers of all steel mesh, Small generators for laborer's
tools, Installation of bridge drainage, Pipelayers,
Vibrator type rollers, Tamper, Drill doctor, Tail or Screw
Operator on asphalt paver, Water pump operator (1 1/2" and
single diaphragm), Nozzle (asphalt, gunnite, seeding and
sand blasting), Laborers on chain link fence erection, Rock
splitter and power unit, Pusher type concrete saw and all
other gas, electric, oil, and air tool operators, Wrecking

laborers

GROUP 3: All rock or drilling machine operators (except quarry master and similar type), Acetylene torch operators, and Asphalt paver, Powderman

GROUP 4: Blasterers, Form setters, Stone or Granite Curb setters

LABO0157-001 07/01/2017

FULTON (Twps. of Bleeker, Mayfield, Northhampton, Johnstown, Broadalbin and Perth); MONTGOMERY (Twps. of Mohawk, Glen, Charleston, Amsterdam, and Florida); SARATOGA (Twps. of Day, Hadley, Edinburg, Corinth, Moreau, South Glens Falls, Providence, Greenfield, Wilton, Northcumberland, Galway, Milton, Saratoga Springs, Charlton, Ballston, Malta and Clifton Park); SCHENECTADY and SCHOHARIE COUNTIES.

Rates Fringes

LABORER

BUILDING:

GROUP 1.....	\$ 28.74	20.14+a
GROUP 2.....	\$ 30.09	20.14+a

HEAVY & HIGHWAY:

GROUP 1.....	\$ 30.55	21.29+a
GROUP 2.....	\$ 30.75	21.29+a
GROUP 3.....	\$ 30.95	21.29+a
GROUP 4.....	\$ 31.15	21.29+a
GROUP 5.....	\$ 32.55	21.29+a

LABORER CLASSIFICATIONS

Group 1: Common Laborers

Group 2: Asbestos and Toxic Materials

Commercial projects valued at \$800,000 or less and/or industrial projects valued at \$100,000 or less, excluding demolition work (the complete razing of structures) 75% of the basic wage scale with full benefits will apply

FOOTNOTE:

a. PAID HOLIDAYS: New Years Day, Memorial Day, Independence Day, Labor Day, Thanksgiving Day, and Christmas Day

LABORER CLASSIFICATIONS

GROUP 1: Common laborers, flagman, outboard & hand boats

GROUP 2: Bull float, chain saw, concrete aggregate bin,

concrete bootman, gin buggy, hand or machine vibrator, jackhammer, mason tender, mortar mixer, pavement breaker, handlers of all steel mesh, small generators for laborers' tools, installation of bridge drainage, pipelayers, vibrator type rollers, tamper, drill doctor, tail or screw operator on asphalt paver, water pump operator (1 1/2") and single diaphragm), nozzle (asphalt, gunnite, seeding, and sand blasting), laborers on chain fence erection, rock splitter and power unit, pusher type concrete saw and all other gas, electric, oil, and air tool operators, wrecking laborers

GROUP 3: All rock drilling machine operators (except quarry master and similar type), acetylene torch operator, and asphalt paver, powderman

GROUP 4: Blasterers, form setters, stone or granite curb setters

GROUP 5: Hazardous waste removal

LABO0190-001 07/01/2022

ALBANY; GREEN; RENSSELAER COUNTY, WASHINGTON COUNTY, SARATOGA COUNTY (Townships of Stillwater, Halfmoon, Saratoga)

	Rates	Fringes
--	-------	---------

Laborers:

BUILDING:

GROUP 1.....	\$ 32.86	24.57
GROUP 2.....	\$ 34.21	24.57

LABORERS CLASSIFICATIONS

GROUP 1: Common Laborers

GROUP 2: Hazardous waste removal Commercial projects valued at \$800,000 or less and/or industrial projects valued at \$100,000 or less excluding demolition work, (complete razing of structures) will receive 75% of basic wage scale with full fringes will apply

LABO0190-002 07/01/2018

ALBANY; RENSSELAER; COLUMBIA (Twps. of Stuyvesant, Stockport, Kinderhook, New Lebanon, Cannan, Ghent, Chatham, Austerlitz). GREENE (except Catskill Township). WASHINGTON COUNTY. SARATAGO COUNTY (Townships of Stillwater, Halfmoon Saratoga)

	Rates	Fringes
--	-------	---------

Laborers:

HEAVY & HIGHWAY:

GROUP 1:.....	\$ 30.94	22.70
GROUP 2:.....	\$ 31.14	22.70
GROUP 3:.....	\$ 31.34	22.70
GROUP 4:.....	\$ 31.54	22.70
GROUP 5:.....	\$ 32.94	22.70

FOOTNOTE:

PAID HOLIDAYS: New Years Day, Memorial Day, Independence Day, Labor Day, Thanksgiving Day and Christmas Day.

LABORERS CLASSIFICATIONS

GROUP 1: Common laborers, flagmen, outboard and hand boats

GROUP 2: Bull float, chain saw, concrete aggregated bin, concrete bootman, gin buggy, hand or machine vibrator, jackhammer, mason tender, mortar mixer, pavement breaker, handlers of all steel mesh, small generators for laborers' tools, installation of bridge drainage, pipelayers, vibrator type rollers, tampers, drill doctor, Tail or screw operator on asphalt paver, Water pump operator (1 1/2" and single diaphragm), Nozzle (asphalt, gunnite, seeding, and sand blasting) Laborers on chain link fence erection, rock splitter and power unit, pusher type concrete saw and all other gas, electric, oil, air tool operators, and wrecking laborers

GROUP 3: All rock air drilling machine operators (except quarry master and similar type), acetylene torch operators, and asphalt paver, powderman

GROUP 4: Blasterers, form setters, stone or granite curb setters

GROUP 5: Hazardous waste removal

LABO0235-006 05/01/2018

COLUMBIA (Twps. of Greenport, Claverack, Hillsdale, Livingston, Germantown, Taghkanic, Copake, Clermont, Gallatin, Ancram):

Rates Fringes

Laborers:

HEAVY & HIGHWAY

GROUP 1:.....	\$ 24.40	29.75+a
GROUP 2:.....	\$ 28.16	29.75+a
GROUP 3:.....	\$ 29.16	29.75+a

LABORERS CLASSIFICATIONS (HEAVY & HIGHWAY)

GROUP 1: Flagperson; Placing and maintenance of all flares, cones, lights, signs, barricades; traffic control custodial work; traffic directors; temporary heat or light tenders; tool rooms

GROUP 2: General Laborers, Dumpman, Pitman, Concrete man; Signal man; Pipelayers; Rip rap; Dry stone layer; Jack hammer; Powderman; Highscalers power buggy operator; Steel rod carrier; Vibratory operator; other machine operator; wrecking; Vibrator operator-compact; Gunite and sandblasting; Water pump 2' or under; Nipper; Chucker; Asphalt Workers

GROUP 3: Asphalt raker; Asphalt Screedman; Drillers (all); Laser Beam Operator; Form Setter/Aligners; Blasters

FOOTNOTE:

a. PAID HOLIDAYS: New Years Day, Presidents Day, Good Friday, Memorial Day, Independence Day, Labor Day, Columbus Day, Veterans Day, November Election Day, Thanksgiving Day, and Christmas Day

PAIN0009-013 07/01/2022

	Rates	Fringes
GLAZIER.....	\$ 34.01	26.91

PAIN0155-002 05/01/2021

COLUMBIA AND GREENE COUNTIES

	Rates	Fringes
Painters:		
Drywall Finisher.....	\$ 35.94	24.66
Lead Abatement Work.....	\$ 35.94	24.66
Painter/Paperhanger.....	\$ 35.94	24.66
Spray Rate.....	\$ 36.94	24.66

PAIN0201-001 05/01/2022

	Rates	Fringes
Painters:		
Lead Abatement Workers,		
Structural Steel		
Zone 1.....	\$ 31.79	19.75
Zone 2.....	\$ 31.79	19.75
Painters, Drywall		
Finishers, Spray		
Zone 1.....	\$ 30.79	19.75

Zone 2.....\$ 30.79 19.75

Zone #1 Entire counties of ALBANY, FULTON, MONTGOMERY,
RENNSELAER, SCHOHARIE, SCHENECTADY AND SARATOGA

ZONE #2 All of WASHINGTON County

PAIN0806-002 10/01/2022

ALBANY, COLUMBIA, FULTON, GREENE, MONTGOMERY, RENNSSELAER,
SCHOHARIE, SCHENECTADY, SARATOGA AND WASHINGTON

Rates Fringes

Painters:

Structural Steel and Bridge.\$ 54.50 52.73

PLUM0007-001 05/01/2022

ALBANY; COLUMBIA; FULTON; GREENE; MONTGOMERY; RENNSSELAER;
SCHENECTADY; SARATOGA (Towns of Charlton, Clifton Park, Galway,
Halfmoon, Milton, Stillwater and Waterford)

Rates Fringes

PLUMBER/PIPEFITTER.....\$ 48.30 28.15

PLUM0112-019 05/01/2022

Townships of Canajoharie and Minden

Rates Fringes

PLUMBER (Including
Steamfitting)

Northern Zone.....\$ 39.25 31.35

PLUM0773-002 05/01/2022

SARATOGA (Remainder of County); WASHINGTON COUNTY:

Rates Fringes

PLUMBER/PIPEFITTER.....\$ 39.65 32.73

ROOF0203-003 06/01/2021

SCHOHARIE COUNTY:

Rates Fringes

ROOFER.....\$ 28.05 17.79

 ROOF0241-001 07/01/2022

	Rates	Fringes
ROOFER.....	\$ 33.55	22.35

 SFNY0669-001 01/01/2023

	Rates	Fringes
SPRINKLER FITTER.....	\$ 40.81	26.47

 SHEE0083-001 06/01/2019

	Rates	Fringes
Sheet metal worker.....	\$ 33.73	33.04+a

FOOTNOTE:

a. PAID HOLIDAYS: New Year's Day, Memorial Day, Independence Day, Labor Day, Thanksgiving Day, Christmas Day. If any of these holidays fall on a Saturday or Sunday, either the preceding Friday or following Monday will be observed as the holiday.

 TEAM0294-003 07/01/2021

	Rates	Fringes
Truck drivers:		
HEAVY & HIGHWAY		
GROUP 1.....	\$ 32.65	27.52+a
GROUP 2.....	\$ 32.71	27.52+a
GROUP 3.....	\$ 32.80	27.52+a
GROUP 4.....	\$ 32.93	27.52+a
GROUP 5.....	\$ 33.09	27.52+a

TRUCK DRIVERS CLASSIFICATIONS (HEAVY & HIGHWAY)

GROUP 1: Pick-ups, panel trucks, flatboy material trucks (straight jobs), single axle dump trucks, dumpsters, receivers, greasers, truck tireman

GROUP 2: Tandems, batch trucks, mechanics

GROUP 3: Semi-trailers, low-boy trucks, asphalt distributor trucks, agitator, mixer trucks and dumper type vehicles, truck mechanic, fuel truck

GROUP 4: Specialized earth moving equipment - euclid type or similar off-highway equipment, where not self-loaded, straddle (ross) carrier, self-contained concrete unit

GROUP 5: Off-highway tandem back dump, twin engine equipment and double hitched equipment where not self-loaded

FOOTNOTE:

a. PAID HOLIDAYS: New Year's Day, Memorial Day, Independence Day, Labor Day, Thanksgiving Day, Christmas Day, provided the employee works the day before and the day after the holiday.

TEAM0294-004 07/01/2019

BUILDING CONSTRUCTION

EXCLUDING MONTGOMERY COUNTY

	Rates	Fringes
Truck drivers:		
GROUP 1.....	\$ 27.67	24.28+a
GROUP 2.....	\$ 27.97	24.28+a

FOOTNOTES:

a. One week vacation after 1 year; 2 weeks vacation after 5 years.

TRUCK DRIVERS BUILDING CLASSIFICATIONS

GROUP 1: Straight, winch, transit mix on job site, road oilers, dump, panel, pick-up, water and fuel trucks on site (including nozzle)

GROUP 2: Euclid or similar equipment, lowboy or lowboy trailers

WELDERS - Receive rate prescribed for craft performing operation to which welding is incidental.

=====

Note: Executive Order (EO) 13706, Establishing Paid Sick Leave for Federal Contractors applies to all contracts subject to the Davis-Bacon Act for which the contract is awarded (and any solicitation was issued) on or after January 1, 2017. If this contract is covered by the EO, the contractor must provide employees with 1 hour of paid sick leave for every 30 hours they work, up to 56 hours of paid sick leave each year. Employees must be permitted to use paid sick leave for their own illness, injury or other health-related needs, including preventive care; to assist a family member (or person who is like family to the employee) who is ill, injured, or has other health-related needs, including preventive care; or for reasons

resulting from, or to assist a family member (or person who is like family to the employee) who is a victim of, domestic violence, sexual assault, or stalking. Additional information on contractor requirements and worker protections under the EO is available at <https://www.dol.gov/agencies/whd/government-contracts>.

Unlisted classifications needed for work not included within the scope of the classifications listed may be added after award only as provided in the labor standards contract clauses (29CFR 5.5 (a) (1) (ii)).

The body of each wage determination lists the classification and wage rates that have been found to be prevailing for the cited type(s) of construction in the area covered by the wage determination. The classifications are listed in alphabetical order of ""identifiers"" that indicate whether the particular rate is a union rate (current union negotiated rate for local), a survey rate (weighted average rate) or a union average rate (weighted union average rate).

Union Rate Identifiers

A four letter classification abbreviation identifier enclosed in dotted lines beginning with characters other than ""SU"" or ""UAVG"" denotes that the union classification and rate were prevailing for that classification in the survey. Example: PLUM0198-005 07/01/2014. PLUM is an abbreviation identifier of the union which prevailed in the survey for this classification, which in this example would be Plumbers. 0198 indicates the local union number or district council number where applicable, i.e., Plumbers Local 0198. The next number, 005 in the example, is an internal number used in processing the wage determination. 07/01/2014 is the effective date of the most current negotiated rate, which in this example is July 1, 2014.

Union prevailing wage rates are updated to reflect all rate changes in the collective bargaining agreement (CBA) governing this classification and rate.

Survey Rate Identifiers

Classifications listed under the ""SU"" identifier indicate that no one rate prevailed for this classification in the survey and the published rate is derived by computing a weighted average rate based on all the rates reported in the survey for that classification. As this weighted average rate includes all rates reported in the survey, it may include both union and non-union rates. Example: SULA2012-007 5/13/2014. SU indicates the rates are survey rates based on a weighted average

calculation of rates and are not majority rates. LA indicates the State of Louisiana. 2012 is the year of survey on which these classifications and rates are based. The next number, 007 in the example, is an internal number used in producing the wage determination. 5/13/2014 indicates the survey completion date for the classifications and rates under that identifier.

Survey wage rates are not updated and remain in effect until a new survey is conducted.

Union Average Rate Identifiers

Classification(s) listed under the UAVG identifier indicate that no single majority rate prevailed for those classifications; however, 100% of the data reported for the classifications was union data. EXAMPLE: UAVG-OH-0010 08/29/2014. UAVG indicates that the rate is a weighted union average rate. OH indicates the state. The next number, 0010 in the example, is an internal number used in producing the wage determination. 08/29/2014 indicates the survey completion date for the classifications and rates under that identifier.

A UAVG rate will be updated once a year, usually in January of each year, to reflect a weighted average of the current negotiated/CBA rate of the union locals from which the rate is based.

WAGE DETERMINATION APPEALS PROCESS

1.) Has there been an initial decision in the matter? This can be:

- * an existing published wage determination
- * a survey underlying a wage determination
- * a Wage and Hour Division letter setting forth a position on a wage determination matter
- * a conformance (additional classification and rate) ruling

On survey related matters, initial contact, including requests for summaries of surveys, should be with the Wage and Hour National Office because National Office has responsibility for the Davis-Bacon survey program. If the response from this initial contact is not satisfactory, then the process described in 2.) and 3.) should be followed.

With regard to any other matter not yet ripe for the formal process described here, initial contact should be with the Branch of Construction Wage Determinations. Write to:

Branch of Construction Wage Determinations
Wage and Hour Division

U.S. Department of Labor
200 Constitution Avenue, N.W.
Washington, DC 20210

2.) If the answer to the question in 1.) is yes, then an interested party (those affected by the action) can request review and reconsideration from the Wage and Hour Administrator (See 29 CFR Part 1.8 and 29 CFR Part 7). Write to:

Wage and Hour Administrator
U.S. Department of Labor
200 Constitution Avenue, N.W.
Washington, DC 20210

The request should be accompanied by a full statement of the interested party's position and by any information (wage payment data, project description, area practice material, etc.) that the requestor considers relevant to the issue.

3.) If the decision of the Administrator is not favorable, an interested party may appeal directly to the Administrative Review Board (formerly the Wage Appeals Board). Write to:

Administrative Review Board
U.S. Department of Labor
200 Constitution Avenue, N.W.
Washington, DC 20210

4.) All decisions by the Administrative Review Board are final.

=====

END OF GENERAL DECISIO"

Section E - Inspection and Acceptance

INSPECTION AND ACCEPTANCE TERMS

Supplies/services will be inspected/accepted at:

CLIN	INSPECT AT	INSPECT BY	ACCEPT AT	ACCEPT BY
0001	Destination	Government	Destination	Government
0002	Destination	Government	Destination	Government
0003	Destination	Government	Destination	Government
0004	Destination	Government	Destination	Government
1001	Destination	Government	Destination	Government
1002	Destination	Government	Destination	Government
1003	Destination	Government	Destination	Government

Section F - Deliveries or Performance

INSTRUCTIONS**INSTRUCTIONS****1. INSTRUCTIONS, CONDITIONS, AND NOTICES TO OFFERORS**

You are invited to submit a quote in response to our Request for Quote (RFQ) W50S8J23Q0002, Repair various roofs, Project No. VBDZ232100 at the 109th Airlift Wing/Stratton ANGB, NY.

This solicitation is set-aside 100% for small businesses.

EVALUATION:

Quotes will be evaluated using Simplified Acquisition Procedures IAW FAR Part 13. The Government will award a contract resulting from this solicitation to the responsible contractor who submits the best value quote considering price and non-price related factors. Non-Price related factors include the following:

Contractor shall provide a short (no more than one (1) page per project) project description (include Customer Name; Location & Dollar Value) and scope description for three (3) roofing projects of industrial/commercial size in the Northeast (included Maine, New Hampshire, Vermont, New York, Pennsylvania and Massachusetts) that include repair of membrane, metal, modified bitumen, and/or elastomeric coating. Types of repair can be spread out across the three projects. Please include references and their contact information.

The overarching evaluation approach is as follows:

Quotes will be sorted based on whether the quote includes three (3), two (2), one (1) or zero (0) projects as described above for non-price related factors. Quotes which include the maximum of three (3) projects will be evaluated first.

The Government will evaluate the non-price factor information submitted with the lowest priced quote that contains the maximum of three (3) projects under the non-price factor submittal. This evaluation will focus on both similarity of experience and quality of previous work, which may be determined by contacting the references provided for each project, a review of available information in CPARS, and/or the Contracting Officer's knowledge and previous experience.

If, in the Government's opinion, the lowest priced quote (of those which included three (3) projects) demonstrates experience across the three (3) projects which is both similar and high quality, the Government may determine that particular offerors' quote represents the best value without conducting a more in-depth review of any other quote.

If, on the other hand, the Government discovers experience or quality information that represents a significant concern, OR if the Government is unable to determine the quoted price to be fair and reasonable, the Government may decide to evaluate the next lowest priced quote. If all quotes containing three (3) projects are exhausted, the Government will move on to those containing two (2) projects, and so on until a quote is identified which in the Government's opinion, represents the best value. Award will be made to the contractor who, in the Government's opinion, submits the best value quote based on the integrated assessment of price and non-price related factors.

Offerors are advised that the evaluation process is subjective and the best value may not be the lowest price.

2. NOTICE OF SITE VISIT:

A site visit will be held on Monday, March 20, 2023 / 2:00 PM. Contractors will meet at the Civil Engineering Building 25, 1 Air National Guard Rd, Scotia, NY 12302.

Due to security concerns, all offerors must register to attend the site visit. Email the following information for all attendees to richard.w.powell44.mil@army.mil

Firm Name

Telephone Number

Visitor's Full Name

This information must be provided NLT 3:00PM Friday, March 17, 2023 to secure a spot. The furnishing of the information above is voluntary; however, your failure to furnish all or part of the requested information may result in the Government's denial of your access to the site visit. This information will be provided to the Base Security

Forces who will authorize your entrance to the site.

You will be required to present the following information upon arrival:

- (1) Vehicle Registration,
- (2) Valid Drivers License,
- (3) Proof of Insurance for Vehicle,
- (4) Safety Inspection and Car Rental agreement if applicable.

Any of the above information furnished by you is protected under the Privacy Act and shall not be released unless permitted by law and/or you have consented to such.

Information provided at this site visit shall not qualify the terms and conditions of the solicitation and specifications. Terms of the solicitation and specifications remain unchanged unless the solicitation is amended in writing. If an amendment is issued, normal procedures relating to the acknowledgment and receipt of solicitation amendments shall apply.

A record of the site visit shall be made and furnished to all prospective offerors via electronic means. The record will include minutes of the meeting, including questions (on a non-attribution basis) and answers.

3. FORMAL COMMUNICATION, OFFEROR EXPLANATIONS:

Submit all questions in the format shown below by email to the contracting office at the addresses below. Do NOT contact other personnel directly. Doing so will only delay your answer. All questions must come through the Contracting Office. Email questions to: richard.w.powell44.mil@army.mil and Nicholas.Bastiani.1@us.af.mil
Subject Line: Reference No. SOLICITATION W50S8J23Q0002 , Repair Roofs

INQUIRY FORMAT

Date of Inquiry:

From (Company Name):

Phone Number:

Inquiry: (Please clearly state your question) (If sent via an attachment word docs are preferred to facilitate posting of answers to the master Q&A document)

Any explanation desired by an offeror regarding the meaning or interpretation of the solicitation, SOW, etc. must be requested in writing and with sufficient time allowed for a reply to reach offerors before the submission of their quote.

All questions and requests for information (RFI) must be received NOT LATER THAN the THIRD working day prior to the due date for quotes. OFFERORS ARE STRONGLY ENCOURAGED TO SUBMIT QUESTIONS EARLY IN THIS PROCESS.

Any changes to the SOW, etc will be issued in the form of amendment. However, any answers that clarify or provide an interpretation will NOT be posted via amendment but rather as a response to the RFI via electronic means.

Receipt by the offeror must be acknowledged in the space provided on the SF 18 or by returning a signed copy of the amendment by the time set for receipt of quotes.

4. WAGE DETERMINATION:

Construction Wage Rates applicable to this project are General Decision Number: NY20230002 02/24/2023 as shown in Section J.

5. QUOTE PREPARATION EXPENSES AND PRE-CONTRACT COSTS:

This RFQ does not commit the Government to pay costs incurred in preparation and submission of quotes or for other costs incurred prior to award of a formal contract.

6. CLAUSES

Clauses and provisions from the Federal Acquisition Regulation (FAR) and supplements thereto are incorporated in this document by reference and in full text. Those incorporated by reference have the same force and effect as if they were given in full text.

7. DISPOSITION OF UNSUCCESSFUL QUOTES:

In compliance with FAR Subpart 4.8, the Government will retain one copy of all unsuccessful quotes.

8. OFFERORS QUALIFICATIONS:

To establish its responsibility, the apparent low offeror may be requested by the Government prior to award, to submit a statement regarding its previous experience in performing comparable work, its business and technical organization, financial and bonding resources and plant available to be used in performing the work. This action may be requested to determine if the contractor is responsible.

DELIVERY INFORMATION

CLIN	DELIVERY DATE	QUANTITY	SHIP TO ADDRESS	DODAAC / CAGE
0001	POP 15-APR-2023 TO 31-AUG-2023	N/A	F9S3S4 - 109 CES RPM-SRM KIMBERLY KOTKOSKIE 1 AIR NATIONAL GUARD ROAD SCOTIA NY 12302-9752 518-344-2431 FOB: Destination	F9S3S4
0002	POP 15-APR-2023 TO 31-AUG-2023	N/A	(SAME AS PREVIOUS LOCATION) FOB: Destination	F9S3S4
0003	POP 15-APR-2023 TO 31-AUG-2023	N/A	(SAME AS PREVIOUS LOCATION) FOB: Destination	F9S3S4
0004	POP 15-APR-2023 TO 31-AUG-2023	N/A	(SAME AS PREVIOUS LOCATION) FOB: Destination	F9S3S4
1001	POP 15-APR-2023 TO 31-AUG-2023	N/A	(SAME AS PREVIOUS LOCATION) FOB: Destination	F9S3S4
1002	POP 15-APR-2023 TO 31-AUG-2023	N/A	(SAME AS PREVIOUS LOCATION) FOB: Destination	F9S3S4
1003	POP 15-APR-2023 TO 31-AUG-2023	N/A	(SAME AS PREVIOUS LOCATION) FOB: Destination	F9S3S4

Section I - Contract Clauses

CLAUSES INCORPORATED BY REFERENCE

52.203-19	Prohibition on Requiring Certain Internal Confidentiality Agreements or Statements	JAN 2017
52.204-10	Reporting Executive Compensation and First-Tier Subcontract Awards	JUN 2020
52.204-19	Incorporation by Reference of Representations and Certifications.	DEC 2014
52.204-23	Prohibition on Contracting for Hardware, Software, and Services Developed or Provided by Kaspersky Lab and Other Covered Entities	NOV 2021
52.204-24	Representation Regarding Certain Telecommunications and Video Surveillance Services or Equipment	NOV 2021
52.204-25	Prohibition on Contracting for Certain Telecommunications and Video Surveillance Services or Equipment	NOV 2021
52.209-10	Prohibition on Contracting With Inverted Domestic Corporations	NOV 2015
52.217-5	Evaluation Of Options	JUL 1990
52.219-28	Post-Award Small Business Program Rerepresentation	OCT 2022
52.222-6	Construction Wage Rate Requirements	AUG 2018
52.222-7	Withholding of Funds	MAY 2014
52.222-8	Payrolls and Basic Records	JUL 2021
52.222-9	Apprentices and Trainees	JUL 2005
52.222-10	Compliance with Copeland Act Requirements	FEB 1988
52.222-11	Subcontracts (Labor Standards)	MAY 2014
52.222-12	Contract Termination-Debarment	MAY 2014
52.222-13	Compliance With Construction Wage Rate Requirements and Related Regulations	MAY 2014
52.222-14	Disputes Concerning Labor Standards	FEB 1988
52.222-15	Certification of Eligibility	MAY 2014
52.222-34	Project Labor Agreement	MAY 2010
52.222-50	Combating Trafficking in Persons	NOV 2021
52.222-62	Paid Sick Leave Under Executive Order 13706	JAN 2022
52.223-18	Encouraging Contractor Policies To Ban Text Messaging While Driving	JUN 2020
52.232-39	Unenforceability of Unauthorized Obligations	JUN 2013
52.233-4	Applicable Law for Breach of Contract Claim	OCT 2004
52.236-2	Differing Site Conditions	APR 1984
52.236-3	Site Investigation and Conditions Affecting the Work	APR 1984
52.236-5	Material and Workmanship	APR 1984
52.236-7	Permits and Responsibilities	NOV 1991
52.236-17	Layout of Work	APR 1984
52.236-26	Preconstruction Conference	FEB 1995
52.242-14	Suspension of Work	APR 1984
52.244-6	Subcontracts for Commercial Products and Commercial Services	DEC 2022
52.246-4	Inspection Of Services--Fixed Price	AUG 1996
52.246-21	Warranty of Construction	MAR 1994
252.201-7000	Contracting Officer's Representative	DEC 1991
252.203-7000	Requirements Relating to Compensation of Former DoD Officials	SEP 2011
252.203-7002	Requirement to Inform Employees of Whistleblower Rights	DEC 2022

252.204-7004	Antiterrorism Awareness Training for Contractors.	FEB 2019
252.204-7006	Billing Instructions	OCT 2005
252.204-7012	Safeguarding Covered Defense Information and Cyber Incident Reporting	DEC 2019
252.223-7008	Prohibition of Hexavalent Chromium	JUN 2013
252.225-7002	Qualifying Country Sources As Subcontractors	MAR 2022
252.232-7003	Electronic Submission of Payment Requests and Receiving Reports	DEC 2018
252.236-7000	Modification Proposals-Price Breakdown	DEC 1991
252.243-7001	Pricing Of Contract Modifications	DEC 1991
252.244-7000	Subcontracts for Commercial Items	DEC 2022
252.247-7023	Transportation of Supplies by Sea	FEB 2019

CLAUSES INCORPORATED BY FULL TEXT

52.204-26 COVERED TELECOMMUNICATIONS EQUIPMENT OR SERVICES--REPRESENTATION (OCT 2020)

(a) Definitions. As used in this provision, “covered telecommunications equipment or services” and “reasonable inquiry” have the meaning provided in the clause 52.204-25, Prohibition on Contracting for Certain Telecommunications and Video Surveillance Services or Equipment.

(b) Procedures. The Offeror shall review the list of excluded parties in the System for Award Management (SAM) (<https://www.sam.gov>) for entities excluded from receiving federal awards for “covered telecommunications equipment or services”.

(c) Representations.

(1) The Offeror represents that it [____] does, [____] does not provide covered telecommunications equipment or services as a part of its offered products or services to the Government in the performance of any contract, subcontract, or other contractual instrument.

(2) After conducting a reasonable inquiry for purposes of this representation, the offeror represents that it [____] does, [____] does not use covered telecommunications equipment or services, or any equipment, system, or service that uses covered telecommunications equipment or services.

(End of provision)

52.211-10 COMMENCEMENT, PROSECUTION, AND COMPLETION OF WORK (APR 1984)

The Contractor shall be required to (a) commence work under this contract within **14** calendar days after the date the Contractor receives the notice to proceed, (b) prosecute the work diligently, and (c) complete the entire work ready for use not later than **90 Calendar Days after notice to proceed**. The time stated for completion shall include final cleanup of the premises.

(End of clause)

52.213-4 TERMS AND CONDITIONS--SIMPLIFIED ACQUISITIONS (OTHER THAN COMMERCIAL PRODUCTS AND COMMERCIAL SERVICES) (DEC 2022)

(a) The Contractor shall comply with the following Federal Acquisition Regulation (FAR) clauses that are incorporated by reference:

(1) The clauses listed below implement provisions of law or Executive order:

(i) 52.203-19, Prohibition on Requiring Certain Internal Confidentiality Agreements or Statements (JAN 2017) (section 743 of Division E, Title VII, of the Consolidated and Further Continuing Appropriations Act, 2015 (Pub. L. 113-235) and its successor provisions in subsequent appropriations acts (and as extended in continuing resolutions)).

(ii) 52.204-23, Prohibition on Contracting for Hardware, Software, and Services Developed or Provided by Kaspersky Lab and Other Covered Entities (NOV 2021) (Section 1634 of Pub. L. 115-91).

(iii) 52.204-25, Prohibition on Contracting for Certain Telecommunications and Video Surveillance Services or Equipment. (NOV 2021) (Section 889(a)(1)(A) of Pub. L. 115-232).

(iv) 52.222-3, Convict Labor (JUN 2003) (E.O. 11755).

(v) 52.222-21, Prohibition of Segregated Facilities (APR 2015).

(vi) 52.222-26, Equal Opportunity (SEPT 2016) (E.O. 11246).

(vii) 52.225-13, Restrictions on Certain Foreign Purchases (FEB 2021) (E.O.s, proclamations, and statutes administered by the Office of Foreign Assets Control of the Department of the Treasury).

(viii) 52.233-3, Protest After Award (AUG 1996) (31 U.S.C. 3553).

(ix) 52.233-4, Applicable Law for Breach of Contract Claim (OCT 2004) (Pub. L. 108-77, 108-78 (19 U.S.C. 3805 note)).

(2) Listed below are additional clauses that apply:

(i) 52.232-1, Payments (APR 1984).

(ii) 52.232-8, Discounts for Prompt Payment (FEB 2002).

(iii) 52.232-11, Extras (APR 1984).

(iv) 52.232-25, Prompt Payment (JAN 2017).

(v) 52.232-39, Unenforceability of Unauthorized Obligations (JUN 2013).

(vi) 52.232-40, Providing Accelerated Payments to Small Business Subcontractors (NOV 2021).

(vii) 52.233-1, Disputes (MAY 2014).

(viii) 52.244-6, Subcontracts for Commercial Products and Commercial Services (DEC 2022).

(ix) 52.253-1, Computer Generated Forms (JAN 1991).

(b) The Contractor shall comply with the following FAR clauses, incorporated by reference, unless the circumstances do not apply:

(1) The clauses listed below implement provisions of law or Executive order:

(i) 52.204-10, Reporting Executive Compensation and First-Tier Subcontract Awards (JUN 2020) (Pub. L. 109-282) (31 U.S.C. 6101 note) (Applies to contracts valued at or above the threshold specified in FAR 4.1403(a) on the date of award of this contract).

(ii) 52.222-19, Child Labor--Cooperation with Authorities and Remedies (DEC 2022) (E.O. 13126) (Applies to contracts for supplies exceeding the micro-purchase threshold, as defined in 2.101 on the date of award of this contract).

(iii) 52.222-20, Contracts for Materials, Supplies, Articles, and Equipment (JUN 2020) (41 U.S.C. chapter 65) (Applies to supply contracts over the threshold specified in FAR 22.602 on the date of award of this contract, in the United States, Puerto Rico, or the U.S. Virgin Islands).

(iv) 52.222-35, Equal Opportunity for Veterans (JUN 2020) (38 U.S.C. 4212) (Applies to contracts valued at or above the threshold specified in FAR 22.1303(a) on the date of award of this contract).

(v) 52.222-36, Equal Employment for Workers with Disabilities (JUN 2020) (29 U.S.C. 793) (Applies to contracts over the threshold specified in FAR 22.1408(a) on the date of award of this contract, unless the work is to be performed outside the United States by employees recruited outside the United States). (For purposes of this clause, "United States" includes the 50 States, the District of Columbia, Puerto Rico, the Northern Mariana Islands, American Samoa, Guam, the U.S. Virgin Islands, and Wake Island.)

(vi) 52.222-37, Employment Reports on Veterans (JUN 2020) (38 U.S.C. 4212) (Applies to contracts valued at or above the threshold specified in FAR 22.1303(a) on the date of award of this contract).

(vii) 52.222-41, Service Contract Labor Standards (AUG 2018) (41 U.S.C. chapter 67) (Applies to service contracts over \$2,500 that are subject to the Service Contract Labor Standards statute and will be performed in the United States, District of Columbia, Puerto Rico, the Northern Mariana Islands, American Samoa, Guam, the U.S. Virgin Islands, Johnston Island, Wake Island, or the outer Continental Shelf).

(viii)(A) 52.222-50, Combating Trafficking in Persons (NOV 2021) (22 U.S.C. chapter 78 and E.O. 13627) (Applies to all solicitations and contracts).

(B) Alternate I (MAR 2015) (Applies if the Contracting Officer has filled in the following information with regard to applicable directives or notices: Document title(s), source for obtaining document(s), and contract performance location outside the United States to which the document applies).

(ix) 52.222-55, Minimum Wages for Contractor Workers Under Executive Order 14026 (JAN 2022) (Applies when 52.222-6 or 52.222-41 are in the contract and performance in whole or in part is in the United States (the 50 States, the District of Columbia, Puerto Rico, the Northern Mariana Islands, American Samoa, Guam, the U.S. Virgin Islands, Johnston Island, Wake Island, and the outer Continental Shelf as defined in the Outer Continental Shelf Lands Act (43 U.S.C. 1331, et seq.))).

(x) 52.222-62, Paid Sick Leave Under Executive Order 13706 (JAN 2022) (E.O. 13706) (Applies when 52.222-6 or 52.222-41 are in the contract and performance in whole or in part is in the United States (the 50 States and the District of Columbia.))

(xi) 52.223-5, Pollution Prevention and Right-to-Know Information (MAY 2011) (E.O. 13423) (Applies to services performed on Federal facilities).

(xii) 52.223-11, Ozone-Depleting Substances and High Global Warming Potential Hydrofluorocarbons (Jun 2016) (E.O. 13693)(applies to contracts for products as prescribed at FAR 23.804(a)(1)).

(xiii) 52.223-12, Maintenance, Service, Repair, or Disposal of Refrigeration Equipment and Air Conditioners (Jun 2016) (E.O. 13693) (Applies to maintenance, service, repair, or disposal of refrigeration equipment and air conditioners).

(xiv) 52.223-15, Energy Efficiency in Energy-Consuming Products (MAY 2020) (42 U.S.C. 8259b) (Unless exempt pursuant to 23.204, applies to contracts when energy-consuming products listed in the ENERGY STAR ® Program or Federal Energy Management Program (FEMP) will be--

(A) Delivered;

(B) Acquired by the Contractor for use in performing services at a Federally-controlled facility;

(C) Furnished by the Contractor for use by the Government; or

(D) Specified in the design of a building or work, or incorporated during its construction, renovation, or maintenance).

(xv) 52.223-20, Aerosols (Jun 2016) (E.O. 13693) (Applies to contracts for products that may contain high global warming potential hydrofluorocarbons as a propellant or as a solvent; or contracts for maintenance or repair of electronic or mechanical devices).

(xvi) 52.223-21, Foams (Jun 2016) (E.O. 13693) (Applies to contracts for products that may contain high global warming potential hydrofluorocarbons or refrigerant blends containing hydrofluorocarbons as a foam blowing agent; or contracts for construction of buildings or facilities.

(xvii) (A) 52.225-1, Buy American--Supplies (OCT 2022) (41 U.S.C. chapter 67) (Applies to contracts for supplies, and to contracts for services involving the furnishing of supplies, for use in the United States or its outlying areas, if the value of the supply contract or supply portion of a service contract exceeds the micro-purchase threshold, as defined in 2.101 on the date of award of this contract, and the acquisition--

(1) Is set aside for small business concerns; or

(2) Cannot be set aside for small business concerns (see 19.502-2), and does not exceed \$50,000).

(B) Alternate I (OCT 2022) (Applies if the Contracting Officer has filled in the domestic content threshold below, which will apply to the entire contract period of performance. Substitute the following sentence for the first sentence of paragraph (1)(ii)(A) of the definition of domestic end product in paragraph (a) of 52.225-1:

(A) The cost of its components mined, produced, or manufactured in the United States exceeds 60 percent of the cost of all its components.

(xviii) 52.226-6, Promoting Excess Food Donation to Nonprofit Organizations (JUN 2020) (42 U.S.C. 1792) (Applies to contracts greater than the threshold specified in FAR 26.404 on the date of award of this contract, that provide for the provision, the service, or the sale of food in the United States).

(xix) 52.232-33, Payment by Electronic Funds Transfer--System for Award Management (OCT 2018) (Applies when the payment will be made by electronic funds transfer (EFT) and the payment office uses the System for Award Management (SAM) as its source of EFT information.)

(xx) 52.232-34, Payment by Electronic Funds Transfer--Other than System for Award Management (JUL 2013) (Applies when the payment will be made by EFT and the payment office does not use the SAM database as its source of EFT information.)

(xxi) 52.247-64, Preference for Privately Owned U.S.-Flag Commercial Vessels (NOV 2021) (46 U.S.C. 55305) (Applies to supplies transported by ocean vessels (except for the types of subcontracts listed at 47.504(d).)

(2) Listed below are additional clauses that may apply:

(i) 52.204-21, Basic Safeguarding of Covered Contractor Information Systems (NOV 2021) (Applies to contracts when the contractor or a subcontractor at any tier may have Federal contract information residing in or transiting through its information system.)

(ii) 52.209-6, Protecting the Government's Interest When Subcontracting with Contractors Debarred, Suspended, or Proposed for Debarment (NOV 2021) (Applies to contracts over the threshold specified in FAR 9.405-2(b) on the date of award of this contract).

(iii) 52.211-17, Delivery of Excess Quantities (SEP 1989) (Applies to fixed-price supplies).

(iv) 52.247-29, F.o.b. Origin (FEB 2006) (Applies to supplies if delivery is f.o.b. origin).

(v) 52.247-34, F.o.b. Destination (NOV 1991) (Applies to supplies if delivery is f.o.b. destination).

(c) FAR 52.252-2, Clauses Incorporated by Reference (FEB 1998). This contract incorporates one or more clauses by reference, with the same force and effect as if they were given in full text. Upon request, the Contracting Officer will make their full text available. Also, the full text of a clause may be accessed electronically at this/these address(es):

<https://www.acquisition.gov/browse/index/far>

(d) Inspection/Acceptance. The Contractor shall tender for acceptance only those items that conform to the requirements of this contract. The Government reserves the right to inspect or test any supplies or services that have been tendered for acceptance. The Government may require repair or replacement of nonconforming supplies or reperformance of nonconforming services at no increase in contract price. The Government must exercise its postacceptance rights--

(1) Within a reasonable period of time after the defect was discovered or should have been discovered; and

(2) Before any substantial change occurs in the condition of the item, unless the change is due to the defect in the item.

(e) Excusable delays. The Contractor shall be liable for default unless nonperformance is caused by an occurrence beyond the reasonable control of the Contractor and without its fault or negligence, such as acts of God or the public enemy, acts of the Government in either its sovereign or contractual capacity, fires, floods, epidemics, quarantine restrictions, strikes, unusually severe weather, and delays of common carriers. The Contractor shall notify the Contracting Officer in writing as soon as it is reasonably possible after the commencement of any excusable delay, setting forth the full particulars in connection therewith, shall remedy such occurrence with all reasonable dispatch, and shall promptly give written notice to the Contracting Officer of the cessation of such occurrence.

(f) Termination for the Government's convenience. The Government reserves the right to terminate this contract, or any part hereof, for its sole convenience. In the event of such termination, the Contractor shall immediately stop all work hereunder and shall immediately cause any and all of its suppliers and subcontractors to cease work. Subject to the terms of this contract, the Contractor shall be paid a percentage of the contract price reflecting the percentage of the work performed prior to the notice of termination, plus reasonable charges that the Contractor can demonstrate to the satisfaction of the Government, using its standard record keeping system, have resulted from the termination. The Contractor shall not be required to comply with the cost accounting standards or contract cost principles for this purpose. This paragraph does not give the Government any right to audit the Contractor's records. The Contractor shall not be paid for any work performed or costs incurred that reasonably could have been avoided.

(g) Termination for cause. The Government may terminate this contract, or any part hereof, for cause in the event of any default by the Contractor, or if the Contractor fails to comply with any contract terms and conditions, or fails to provide the Government, upon request, with adequate assurances of future performance. In the event of termination for cause, the Government shall not be liable to the Contractor for any amount for supplies or services not accepted,

and the Contractor shall be liable to the Government for any and all rights and remedies provided by law. If it is determined that the Government improperly terminated this contract for default, such termination shall be deemed a termination for convenience.

(h) Warranty. The Contractor warrants and implies that the items delivered hereunder are merchantable and fit for use for the particular purpose described in this contract.

(End of clause)

52.217-7 OPTION FOR INCREASED QUANTITY--SEPARATELY PRICED LINE ITEM (MAR 1989)

The Government may require the delivery of the numbered line item, identified in the Schedule as an option item, in the quantity and at the price stated in the Schedule. The Contracting Officer may exercise the option by written notice to the Contractor within 90 days of contract award. Delivery of added items shall continue at the same rate that like items are called for under the contract, unless the parties otherwise agree.

(End of clause)

52.219-6 NOTICE OF TOTAL SMALL BUSINESS SET-ASIDE (NOV 2020)

(a) Definition. Small business concern, as used in this clause--

(1) Means a concern, including its affiliates, that is independently owned and operated, not dominant in the field of operation in which it is bidding on Government contracts, and qualified as a small business under the size standards in this solicitation.

(2) Affiliates, as used in paragraph (a)(1) of this clause, means business concerns, one of whom directly or indirectly controls or has the power to control the others, or a third party or parties control or have the power to control the others. In determining whether affiliation exists, consideration is given to all appropriate factors including common ownership, common management, and contractual relationships. SBA determines affiliation based on the factors set forth at 13 CFR 121.103.

(b) Applicability. This clause applies only to--

(1) Contracts that have been totally set aside for small business concerns; and

(2) Orders set aside for small business concerns under multiple-award contracts as described in 8.405-5 and 16.505(b)(2)(i)(F).

(c) General. (1) Offers are solicited only from small business concerns. Offers received from concerns that are not small business concerns shall be considered nonresponsive and will be rejected.

(2) Any award resulting from this solicitation will be made to a small business concern.

(End of clause)

52.225-9 BUY AMERICAN—CONSTRUCTION MATERIALS (OCT 2022)

(a) Definitions. As used in this clause--

Commercially available off-the-shelf (COTS) item—

(1) Means any item of supply (including construction material) that is--

(i) A commercial product (as defined in paragraph (1) of the definition of "commercial product" at Federal Acquisition Regulation (FAR) 2.101);

(ii) Sold in substantial quantities in the commercial marketplace; and

(iii) Offered to the Government, under a contract or subcontract at any tier, without modification, in the same form in which it is sold in the commercial marketplace; and

(2) Does not include bulk cargo, as defined in 46 U.S.C. 40102(4) such as agricultural products and petroleum products.

Component means an article, material, or supply incorporated directly into a construction material.

Construction material means an article, material, or supply brought to the construction site by the Contractor or a subcontractor for incorporation into the building or work. The term also includes an item brought to the site preassembled from articles, materials, or supplies. However, emergency life safety systems, such as emergency lighting, fire alarm, and audio evacuation systems, that are discrete systems incorporated into a public building or work and that are produced as complete systems, are evaluated as a single and distinct construction material regardless of when or how the individual parts or components of those systems are delivered to the construction site. Materials purchased directly by the Government are supplies, not construction material.

Cost of components means--

(1) For components purchased by the Contractor, the acquisition cost, including transportation costs to the place of incorporation into the construction material (whether or not such costs are paid to a domestic firm), and any applicable duty (whether or not a duty-free entry certificate is issued); or

(2) For components manufactured by the Contractor, all costs associated with the manufacture of the component, including transportation costs as described in paragraph (1) of this definition, plus allocable overhead costs, but excluding profit. Cost of components does not include any costs associated with the manufacture of the construction material.

Critical component means a component that is mined, produced, or manufactured in the United States and deemed critical to the U.S. supply chain. The list of critical components is at FAR 25.105.

Critical item means a domestic construction material or domestic end product that is deemed critical to U.S. supply chain resiliency. The list of critical items is at FAR 25.105.

Domestic construction material means--

(1) For construction material that does not consist wholly or predominantly of iron or steel or a combination of both--

(i) An unmanufactured construction material mined or produced in the United States; or

(ii) A construction material manufactured in the United States, if--

(A) The cost of its components mined, produced, or manufactured in the United States exceeds 60 percent of the cost of all its components, except that the percentage will be 65 percent for items delivered in calendar years 2024 through 2028 and 75 percent for items delivered starting in calendar year 2029. Components of foreign origin of the

same class or kind for which nonavailability determinations have been made are treated as domestic. Components of unknown origin are treated as foreign; or

(B) The construction material is a COTS item; or

(2) For construction material that consists wholly or predominantly of iron or steel or a combination of both, a construction material manufactured in the United States if the cost of foreign iron and steel constitutes less than 5 percent of the cost of all components used in such construction material. The cost of foreign iron and steel includes but is not limited to the cost of foreign iron or steel mill products (such as bar, billet, slab, wire, plate, or sheet), castings, or forgings utilized in the manufacture of the construction material and a good faith estimate of the cost of all foreign iron or steel components excluding COTS fasteners. Iron or steel components of unknown origin are treated as foreign. If the construction material contains multiple components, the cost of all the materials used in such construction material is calculated in accordance with the definition of "cost of components".

Fastener means a hardware device that mechanically joins or affixes two or more objects together. Examples of fasteners are nuts, bolts, pins, rivets, nails, clips, and screws.

Foreign construction material means a construction material other than a domestic construction material.

Foreign iron and steel means iron or steel products not produced in the United States. Produced in the United States means that all manufacturing processes of the iron or steel must take place in the United States, from the initial melting stage through the application of coatings, except metallurgical processes involving refinement of steel additives. The origin of the elements of the iron or steel is not relevant to the determination of whether it is domestic or foreign.

Predominantly of iron or steel or a combination of both means that the cost of the iron and steel content exceeds 50 percent of the total cost of all its components. The cost of iron and steel is the cost of the iron or steel mill products (such as bar, billet, slab, wire, plate, or sheet), castings, or forgings utilized in the manufacture of the product and a good faith estimate of the cost of iron or steel components excluding COTS fasteners.

Steel means an alloy that includes at least 50 percent iron, between 0.02 and 2 percent carbon, and may include other elements.

United States means the 50 States, the District of Columbia, and outlying areas.

(b) Domestic preference.

(1) This clause implements 41 U.S.C. chapter 83, Buy American, by providing a preference for domestic construction material. In accordance with 41 U.S.C. 1907, the domestic content test of the Buy American statute is waived for construction material that is a COTS item, except that for construction material that consists wholly or predominantly of iron or steel or a combination of both, the domestic content test is applied only to the iron and steel content of the construction materials, excluding COTS fasteners. (See FAR 12.505(a)(2)). The Contractor shall use only domestic construction material in performing this contract, except as provided in paragraphs (b)(2) and (b)(3) of this clause.

(2) This requirement does not apply to information technology that is a commercial product or to the construction materials or components listed by the Government as follows:

None

(3) The Contracting Officer may add other foreign construction material to the list in paragraph (b)(2) of this clause if the Government determines that

(i) The cost of domestic construction material would be unreasonable.

(A) For domestic construction material that is not a critical item or does not contain critical components.

(1) The cost of a particular domestic construction material subject to the requirements of the Buy American statute is unreasonable when the cost of such material exceeds the cost of foreign material by more than 20 percent;

(2) For construction material that is not a COTS item and does not consist wholly or predominantly of iron or steel or a combination of both, if the cost of a particular domestic construction material is determined to be unreasonable or there is no domestic offer received, and the low offer is for foreign construction material that is manufactured in the United States and does not exceed 55 percent domestic content, the Contracting Officer will treat the lowest offer of foreign construction material that exceeds 55 percent domestic content as a domestic offer and determine whether the cost of that offer is unreasonable by applying the evaluation factor listed in paragraph (b)(3)(i)(A)(1) of this clause.

(3) The procedures in paragraph (b)(3)(i)(A)(2) of this clause will no longer apply as of January 1, 2030.

(B) For domestic construction material that is a critical item or contains critical components.

(1) The cost of a particular domestic construction material that is a critical item or contains critical components, subject to the requirements of the Buy American statute, is unreasonable when the cost of such material exceeds the cost of foreign material by more than 20 percent plus the additional preference factor identified for the critical item or construction material containing critical components listed at FAR 25.105.

(2) For construction material that does not consist wholly or predominantly of iron or steel or a combination of both, if the cost of a particular domestic construction material is determined to be unreasonable or there is no domestic offer received, and the low offer is for foreign construction material that does not exceed 55 percent domestic content, the Contracting Officer will treat the lowest foreign offer of construction material that is manufactured in the United States and exceeds 55 percent domestic content as a domestic offer, and determine whether the cost of that offer is unreasonable by applying the evaluation factor listed in paragraph (b)(3)(i)(B)(1) of this clause.

(3) The procedures in paragraph (b)(3)(i)(B)(2) of this clause will no longer apply as of January 1, 2030.

(ii) The application of the restriction of the Buy American Act to a particular construction material would be impracticable or inconsistent with the public interest; or

(iii) The construction material is not mined, produced, or manufactured in the United States in sufficient and reasonably available commercial quantities of a satisfactory quality.

(c) Request for determination of inapplicability of the Buy American Act. (1)(i) Any Contractor request to use foreign construction material in accordance with paragraph (b)(3) of this clause shall include adequate information for Government evaluation of the request, including--

(A) A description of the foreign and domestic construction materials;

(B) Unit of measure;

(C) Quantity;

(D) Price;

(E) Time of delivery or availability;

(F) Location of the construction project;

(G) Name and address of the proposed supplier; and

(H) A detailed justification of the reason for use of foreign construction materials cited in accordance with paragraph (b)(3) of this clause.

(ii) A request based on unreasonable cost shall include a reasonable survey of the market and a completed price comparison table in the format in paragraph (d) of this clause.

(iii) The price of construction material shall include all delivery costs to the construction site and any applicable duty (whether or not a duty-free certificate may be issued).

(iv) Any Contractor request for a determination submitted after contract award shall explain why the Contractor could not reasonably foresee the need for such determination and could not have requested the determination before contract award. If the Contractor does not submit a satisfactory explanation, the Contracting Officer need not make a determination.

(2) If the Government determines after contract award that an exception to the Buy American statute applies and the Contracting Officer and the Contractor negotiate adequate consideration, the Contracting Officer will modify the contract to allow use of the foreign construction material. However, when the basis for the exception is the unreasonable price of a domestic construction material, adequate consideration is not less than the differential established in paragraph (b)(3)(i) of this clause.

(3) Unless the Government determines that an exception to the Buy American statute applies, use of foreign construction material is noncompliant with the Buy American statute.

(d) Data. To permit evaluation of requests under paragraph (c) of this clause based on unreasonable cost, the Contractor shall include the following information and any applicable supporting data based on the survey of suppliers:

Foreign and Domestic Construction Materials Price Comparison

Construction material description	Unit of measure	Quantity	Price (dollars) *\
Item 1:			
Foreign construction material....	_____	_____	_____
Domestic construction material...	_____	_____	_____
Item 2:			
Foreign construction material....	_____	_____	_____
Domestic construction material...	_____	_____	_____

[* Include all delivery costs to the construction site and any applicable duty (whether or not a duty-free entry certificate is issued)].

[List name, address, telephone number, and contact for suppliers surveyed. Attach copy of response; if oral, attach summary.]

[Include other applicable supporting information.]

(End of clause)

52.228-1 BID GUARANTEE (SEP 1996)

(a) Failure to furnish a bid guarantee in the proper form and amount, by the time set for opening of bids, may be cause for rejection of the bid.

(b) The bidder shall furnish a bid guarantee in the form of a firm commitment, e.g., bid bond supported by good and

sufficient surety or sureties acceptable to the Government, postal money order, certified check, cashier's check, irrevocable letter of credit, or, under Treasury Department regulations, certain bonds or notes of the United States. The Contracting Officer will return bid guarantees, other than bid bonds, (1) to unsuccessful bidders as soon as practicable after the opening of bids, and (2) to the successful bidder upon execution of contractual documents and bonds (including any necessary coinsurance or reinsurance agreements), as required by the bid as accepted.-

(c) The amount of the bid guarantee shall be **20 (twenty)** percent of the quote price or **\$3M**, whichever is less.-

(d) If the successful bidder, upon acceptance of its bid by the Government within the period specified for acceptance, fails to execute all contractual documents or furnish executed bond(s) within 10 days after receipt of the forms by the bidder, the Contracting Officer may terminate the contract for default.-

(e) In the event the contract is terminated for default, the bidder is liable for any cost of acquiring the work that exceeds the amount of its bid, and the bid guarantee is available to offset the difference.

(End of provision)

52.228-15 PERFORMANCE AND PAYMENT BONDS--CONSTRUCTION (JUN 2020)

(a) Definitions. As used in this clause--

Original contract price means the award price of the contract; or, for requirements contracts, the price payable for the estimated total quantity; or, for indefinite-quantity contracts, the price payable for the specified minimum quantity. Original contract price does not include the price of any options, except those options exercised at the time of contract award.

(b) Amount of required bonds. Unless the resulting contract price is valued at or below the threshold specified in Federal Acquisition Regulation 28.102-1(a) on the date of award of this contract, the successful offeror shall furnish performance and payment bonds to the Contracting Officer as follows:

(1) Performance bonds (Standard Form 25). The penal amount of performance bonds at the time of contract award shall be 100 percent of the original contract price.

(2) Payment Bonds (Standard Form 25-A). The penal amount of payment bonds at the time of contract award shall be 100 percent of the original contract price.

(3) Additional bond protection. (i) The Government may require additional performance and payment bond protection if the contract price is increased. The increase in protection generally will equal 100 percent of the increase in contract price.

(ii) The Government may secure the additional protection by directing the Contractor to increase the penal amount of the existing bond or to obtain an additional bond.

(c) Furnishing executed bonds. The Contractor shall furnish all executed bonds, including any necessary reinsurance agreements, to the Contracting Officer, within the time period specified in the Bid Guarantee provision of the solicitation, or otherwise specified by the Contracting Officer, but in any event, before starting work.

(d) Surety or other security for bonds. The bonds shall be in the form of firm commitment, supported by corporate sureties whose names appear on the list contained in Treasury Department Circular 570, individual sureties, or by other acceptable security such as postal money order, certified check, cashier's check, irrevocable letter of credit, or, in accordance with Treasury Department regulations, certain bonds or notes of the United States. Treasury Circular 570 is published in the Federal Register or may be obtained from the U.S. Department of the Treasury, Financial

Management Service, Surety Bond Branch, 3700 East West Highway, Room 6F01, Hyattsville, MD 20782. Or via the internet at <http://www.fms.treas.gov/c570/>.

(e) Notice of subcontractor waiver of protection (40 U.S.C. 3133(c)). Any waiver of the right to sue on the payment bond is void unless it is in writing, signed by the person whose right is waived, and executed after such person has first furnished labor or material for use in the performance of the contract.

(End of clause)

52.236-27 SITE VISIT (CONSTRUCTION) (FEB 1995)

(a) The clauses at 52.236-2, Differing Site Conditions, and 52.236-3, Site Investigations and Conditions Affecting the Work, will be included in any contract awarded as a result of this solicitation. Accordingly, offerors or quoters are urged and expected to inspect the site where the work will be performed.

(b) An organized site visit has been scheduled for--

20 MARCH 2023 AT 2:00PM EST

(c) Participants will meet at--

Stratton Air National Guard Base

Building 25 (Civil Engineering)

1 Air National Guard Road

Scotia, NY 12302

(End of provision)

52.252-2 CLAUSES INCORPORATED BY REFERENCE (FEB 1998)

This contract incorporates one or more clauses by reference, with the same force and effect as if they were given in full text. Upon request, the Contracting Officer will make their full text available. Also, the full text of a clause may be accessed electronically at this/these address(es):

<https://www.acquisition.gov/browse/index/far>

(End of clause)

52.252-5 AUTHORIZED DEVIATIONS IN PROVISIONS (NOV 2020)

(a) The use in this solicitation of any Federal Acquisition Regulation (48 CFR Chapter 1) provision with an authorized deviation is indicated by the addition of "(DEVIATION)" after the date of the provision.

(b) The use in this solicitation of any [FAR Supplement](#) (48 CFR Chapter [Ch 2](#)) provision with an authorized deviation is indicated by the addition of "(DEVIATION)" after the name of the regulation.

(End of provision)

52.252-6 AUTHORIZED DEVIATIONS IN CLAUSES (NOV 2020)

(a) The use in this solicitation or contract of any Federal Acquisition Regulation (48 CFR Chapter 1) clause with an authorized deviation is indicated by the addition of "(DEVIATION)" after the date of the clause.

(b) The use in this solicitation or contract of any Federal Acquisition Regulation Supplements (48 CFR Ch 2) clause with an authorized deviation is indicated by the addition of "(DEVIATION)" after the name of the regulation.

(End of clause)

252.232-7006 WIDE AREA WORKFLOW PAYMENT INSTRUCTIONS (DEC 2018)

(a) Definitions. As used in this clause—

“Department of Defense Activity Address Code (DoDAAC)” is a six position code that uniquely identifies a unit, activity, or organization.

“Document type” means the type of payment request or receiving report available for creation in Wide Area WorkFlow (WAWF).

“Local processing office (LPO)” is the office responsible for payment certification when payment certification is done external to the entitlement system.

“Payment request” and “receiving report” are defined in the clause at 252.232-7003, Electronic Submission of Payment Requests and Receiving Reports.

(b) Electronic invoicing. The WAWF system provides the method to electronically process vendor payment requests and receiving reports, as authorized by Defense Federal Acquisition Regulation Supplement (DFARS) 252.232-7003, Electronic Submission of Payment Requests and Receiving Reports.

(c) WAWF access. To access WAWF, the Contractor shall—

(1) Have a designated electronic business point of contact in the System for Award Management at <https://www.sam.gov>; and

(2) Be registered to use WAWF at <https://wawf.eb.mil/> following the step-by-step procedures for self-registration available at this web site.

(d) WAWF training. The Contractor should follow the training instructions of the WAWF Web-Based Training Course and use the Practice Training Site before submitting payment requests through WAWF. Both can be accessed by selecting the “Web Based Training” link on the WAWF home page at <https://wawf.eb.mil/>.

(e) WAWF methods of document submission. Document submissions may be via web entry, Electronic Data Interchange, or File Transfer Protocol.

(f) WAWF payment instructions. The Contractor shall use the following information when submitting payment requests and receiving reports in WAWF for this contract or task or delivery order:

(1) Document type. The Contractor shall submit payment requests using the following document type(s):

(i) For cost-type line items, including labor-hour or time-and-materials, submit a cost voucher.

(ii) For fixed price line items—

(A) That require shipment of a deliverable, submit the invoice and receiving report specified by the Contracting Officer.

(B) For services that do not require shipment of a deliverable, submit either the Invoice 2in1, which meets the requirements for the invoice and receiving report, or the applicable invoice and receiving report, as specified by the Contracting Officer.

CONSTRUCTION

(iii) For customary progress payments based on costs incurred, submit a progress payment request.

(iv) For performance based payments, submit a performance based payment request.

(v) For commercial item financing, submit a commercial item financing request.

(2) Fast Pay requests are only permitted when Federal Acquisition Regulation (FAR) 52.213-1 is included in the contract.

(3) Document routing. The Contractor shall use the information in the Routing Data Table below only to fill in applicable fields in WAWF when creating payment requests and receiving reports in the system.

Routing Data Table*

<i>Field Name in WAWF</i>	<i>Data to be entered in WAWF</i>
Pay Official DoDAAC	F9S3S3
Issue By DoDAAC	W50S8J
Admin DoDAAC**	W50S8J
Inspect By DoDAAC	FFMF60
Ship To Code	_____
Ship From Code	_____
Mark For Code	_____
Service Approver (DoDAAC)	_____
Service Acceptor (DoDAAC)	_____
Accept at Other DoDAAC	_____
LPO DoDAAC	_____
DCAA Auditor DoDAAC	_____
Other DoDAAC(s)	_____

(4) Payment request. The Contractor shall ensure a payment request includes documentation appropriate to the type of payment request in accordance with the payment clause, contract financing clause, or Federal Acquisition Regulation 52.216-7, Allowable Cost and Payment, as applicable.

(5) Receiving report. The Contractor shall ensure a receiving report meets the requirements of DFARS Appendix F.

(g) WAWF point of contact.

(1) The Contractor may obtain clarification regarding invoicing in WAWF from the following contracting activity's WAWF point of contact.

NA

(2) Contact the WAWF helpdesk at 866-618-5988, if assistance is needed.

(End of clause)

Section L - Instructions, Conditions and Notices to Bidders

STATEMENT OF WORK

STATEMENT OF WORK
Project Number VBDZ232100

Repair Roofs

DESCRIPTION:

Roofs on seven facilities are to be repaired per *UFC 3-110-03 Roofing*. The UFC can be obtained on the following website: <https://www.wbdg.org>. The EPDM roofs require reattachment of the membrane and patching of holes. Bitumen roofs need patching and sealing. Metal roofs need fastener replacement and elastomeric coating. All roof area measurements are approximate and shall be field verified by the contractor during the site visit, prior to offering a price estimate. Contractor may propose alternative solutions to the below scope prior to the award. Please provide the pricing for each of the Option items separately. Not all options may be awarded.

Bldg #	Section	Roof Type	Repair Size (Approximate)	Scope Summary	Bid
1	G	EPDM	155 LF	Reattach membrane	Base
7	C	Metal	3,600 SF	<i>Investigate a leak. Fasteners and patch repairs</i>	<i>Option</i>
8	A - D	MB	300 LF	Repair joints, splits, flashings, patching	Base
18	A	MB	200 LF	Repair joints, splits, flashings, patching	Base
20	A	Metal	11,480 SF	Coating and repair fasteners, flashings, and patches	Base
26	B	EPDM	120 LF	Reattach membrane, flashings	Base
42	N/A	Metal	4,000 SF	<i>Recoat</i>	<i>Option</i>
55	N/A	Metal	560 SF	<i>Clean rust and paint</i>	<i>Option</i>
56	N/A	Metal	560 SF	<i>Clean rust and paint</i>	<i>Option</i>

1. PROJECT SCOPE

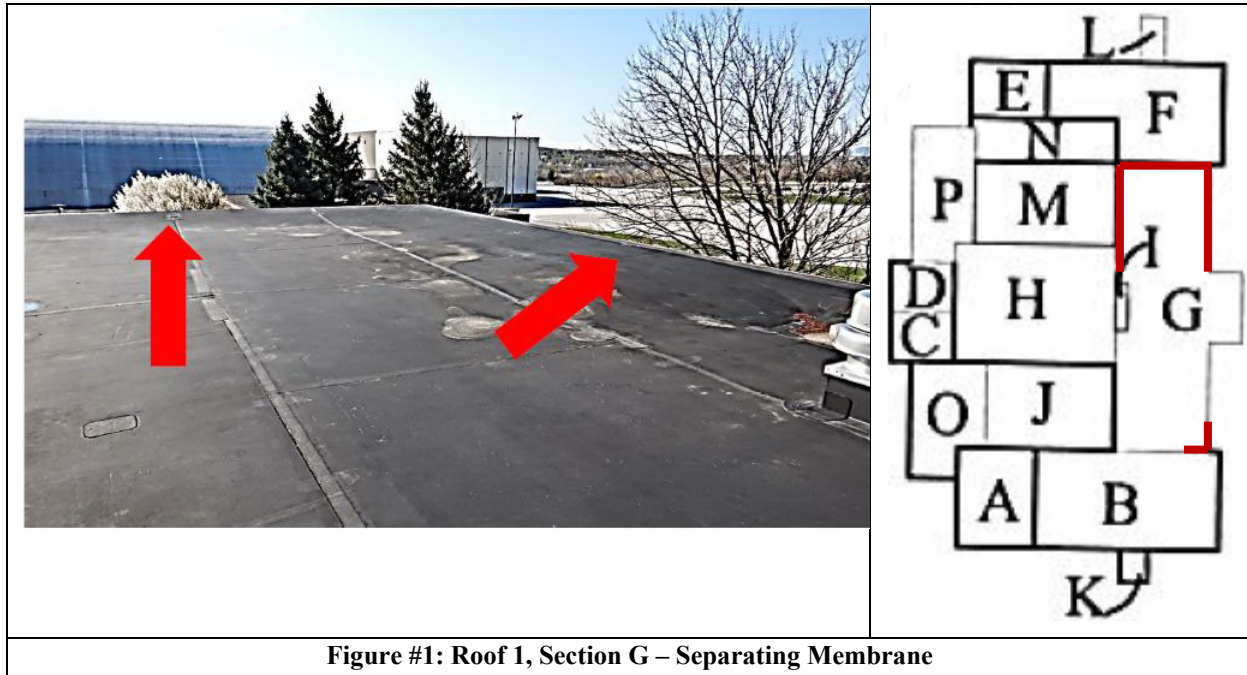
If there is a contradiction between the UFC and this SOW, Contractor shall bring it to the attention of the COR, who will provide guidance on the solution. The magnitude for this project is between \$100,000 and \$250,000.

1.1. EPDM roofs

1.1.1. **Building 1**, Section G membrane is separating near the edges and shall be reattached. Approximately 155 LF shall be reattached. These areas are marked with arrows and red lines in Figure #1.

1.1.1.1. Contractor shall take care not to damage the existing membrane.

1.1.1.2. Contractor may propose an alternative solution to the membrane reattachment during the Request for Information period.



1.1.2. **Building 26**, Section B membrane is separating at the edges.

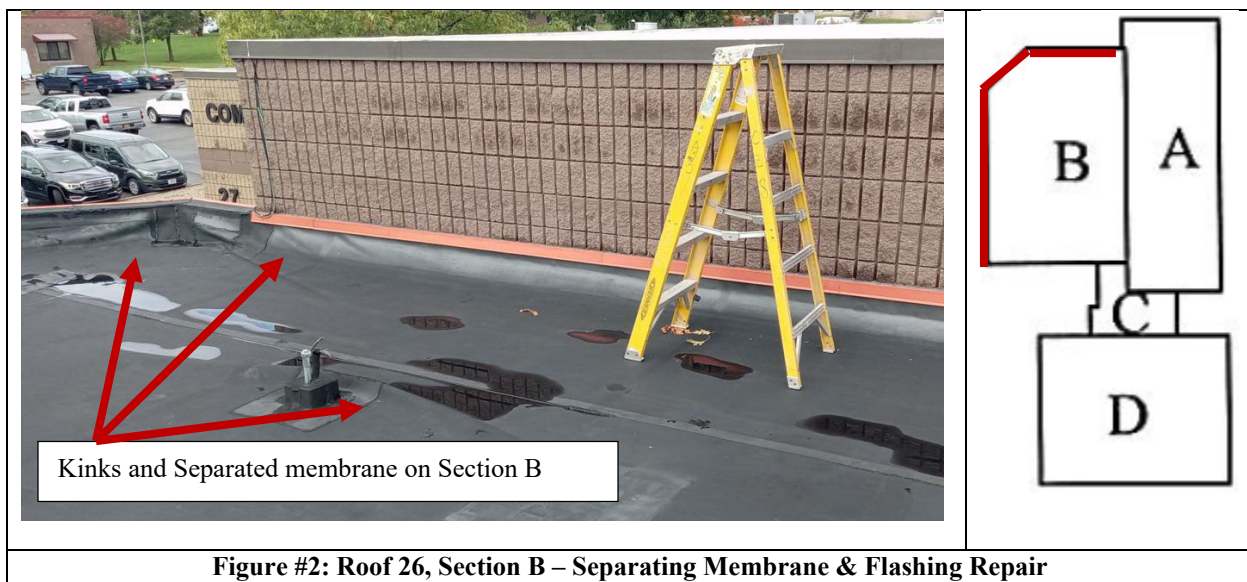
1.1.2.1. Approximately 120 LF shall be reattached. These areas are marked with red lines in Figure #2.

1.1.2.1.1. Contractor may propose an alternative solution to the membrane reattachment during the Request for Information period.

1.1.2.2. Base flashing in the areas where the membrane will be reattached shall be repaired.

1.1.2.3. Additional fifteen (15) areas of base flashing shall be repaired. Most of the flashing repairs are simple seams and five (5) of them are angles/corners.

1.1.2.4. Contractor shall take care not to damage the existing membrane.



1.2. Bitumen Roofs on Buildings 8

1.2.1. Figure #3 below show the sections of Building 8. All four sections will have some items to address and are shown for illustrative purposes.

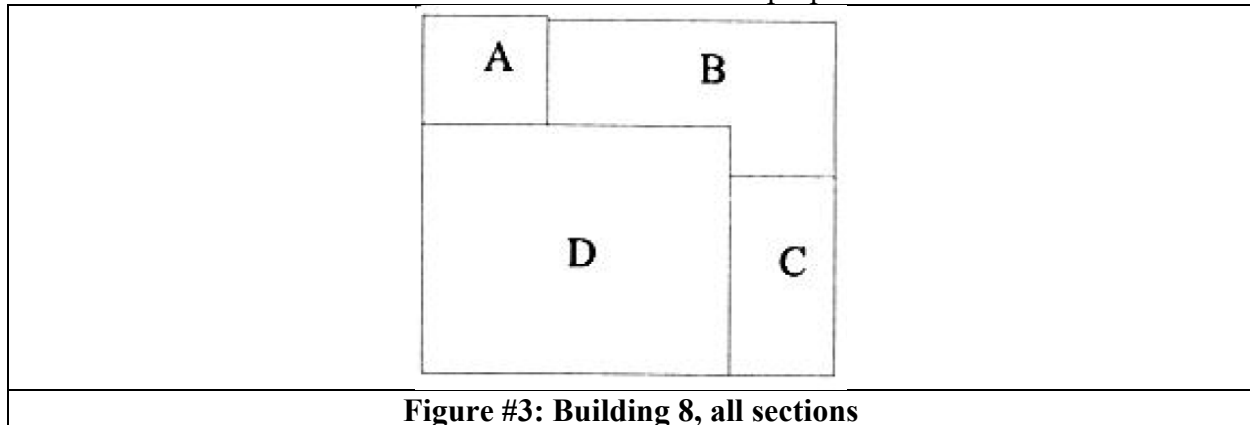
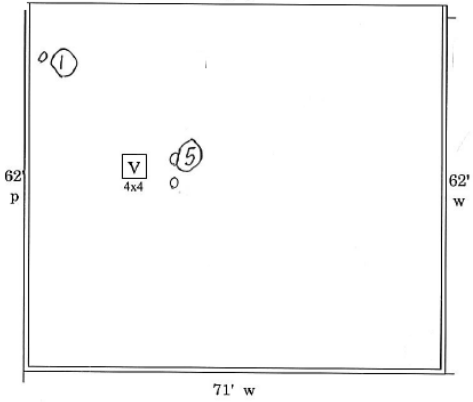
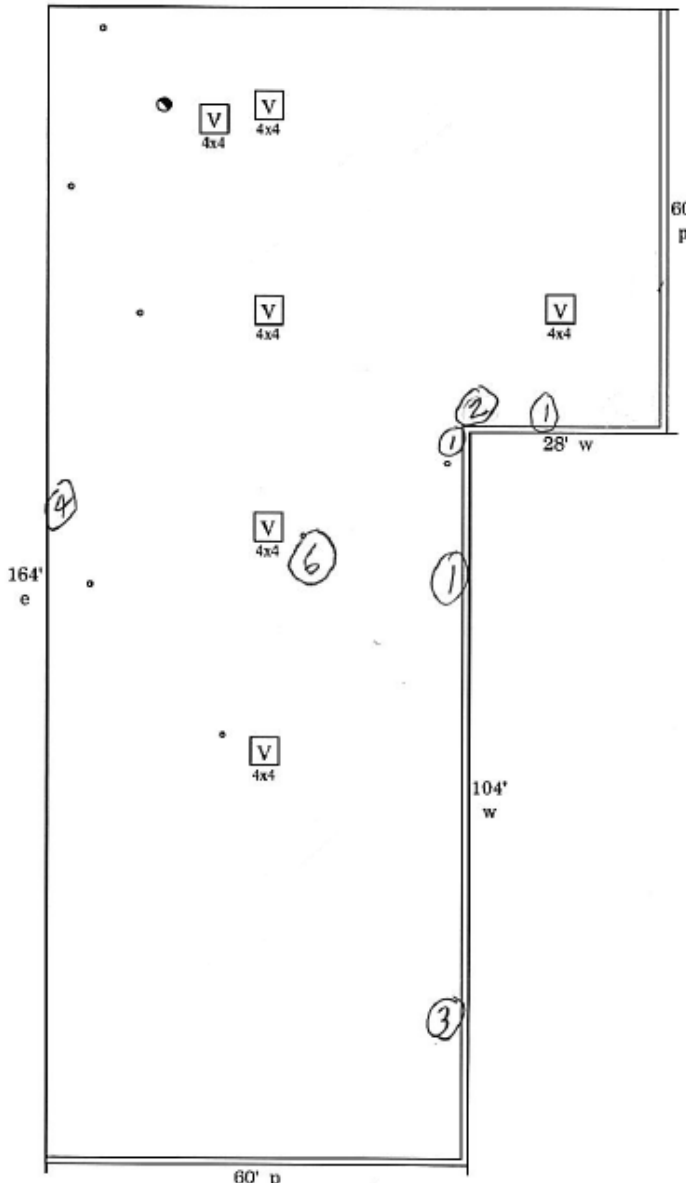


Figure #3: Building 8, all sections

1.2.2. Figure #4 indicates the location and type of damage to be repaired per section. Repeated numbers corresponding to the same damage are due to different descriptions/details the roof inspector has noted in his report and are omitted in this SOW for brevity. Should Contractor want additional detail, a redacted inspection report is provided separately. Additional descriptive pictures of the damage are provided in the Appendix.

	
<p>Section A</p> <ol style="list-style-type: none"> Flash penetration N/A N/A N/A Flash penetration 	<p>Section B</p> <ol style="list-style-type: none"> Metal cap flashing Base flashing Defective seam Edge metal N/A Flash penetration

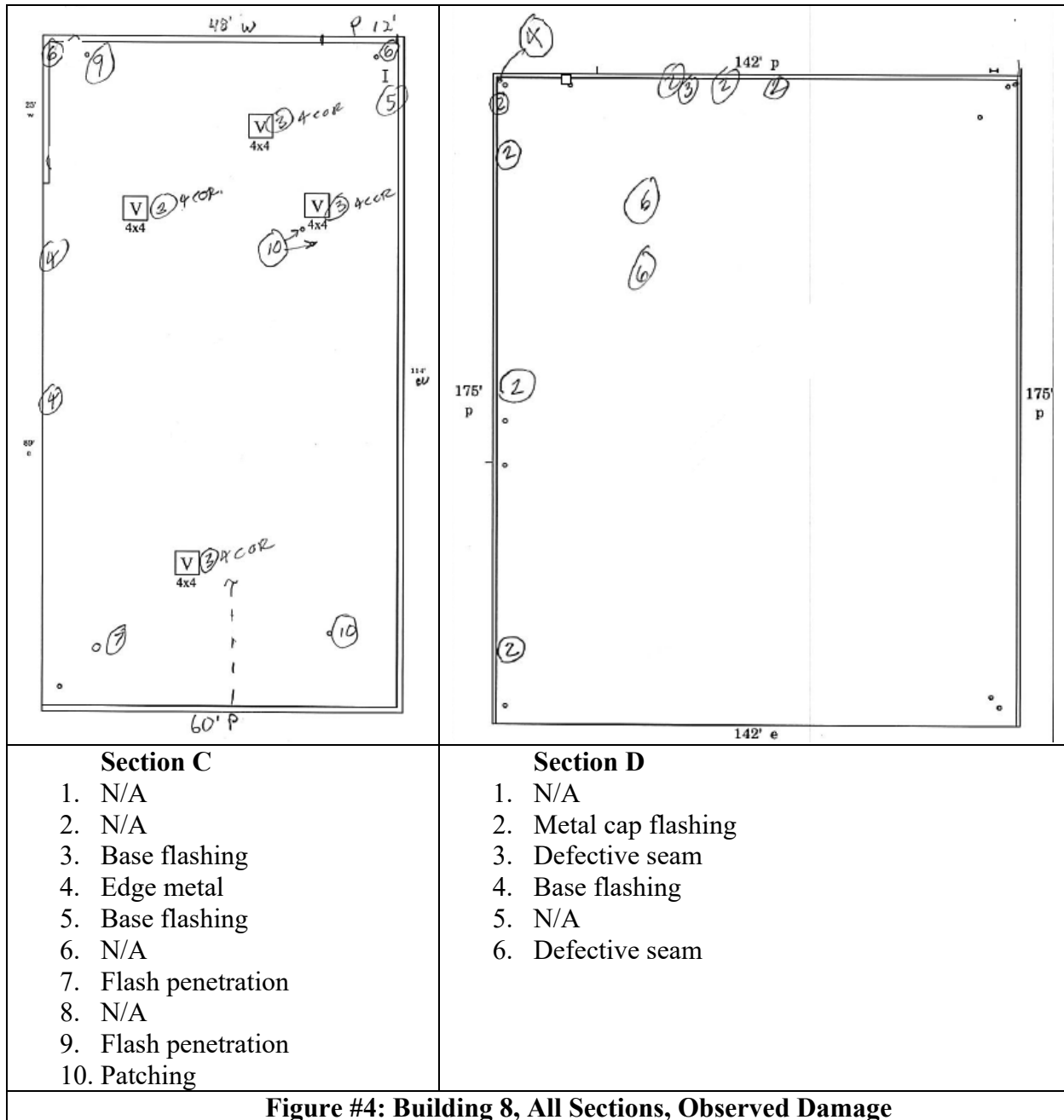


Figure #4: Building 8, All Sections, Observed Damage

- 1.2.3. Contractor shall inspect the surfaces and repair any defects encountered following manufacturer recommendation (Garland Roofing Systems) and best practices including but not limited to
 - 1.2.3.1. Reseal failed joints in metal coping cap and reattach.
 - 1.2.3.2. Install extension of counterflashing over exposed top termination of the base flashing.
 - 1.2.3.3. Apply stripping ply over edge metal joints that are split.
 - 1.2.3.4. Remove temporary repair material from base flashing, reinforce patch as necessary and coat with heavy-bodied asphalt coating.

- 1.2.3.5. Cut and re-secure unbonded base flashing, mechanically fasten slipped flashing and apply cold patch over all repairs.
- 1.2.3.6. Clean and prepare defective seam, reseal lap.
- 1.2.3.7. Install missing flashing sleeves on flashed penetrations.
- 1.2.3.8. Prime surface and apply stripping plies around unsealed flashed penetrations.
- 1.2.3.9. Replace patches having inferior repair material with the same or better quality than the existing membrane. Restore surfacing material.

1.3. Building 18 (Section A)

- 1.3.1. Figure below shows the type of damage on the section of the roof to be repaired. Additional descriptive pictures of the damage are provided in the Appendix.

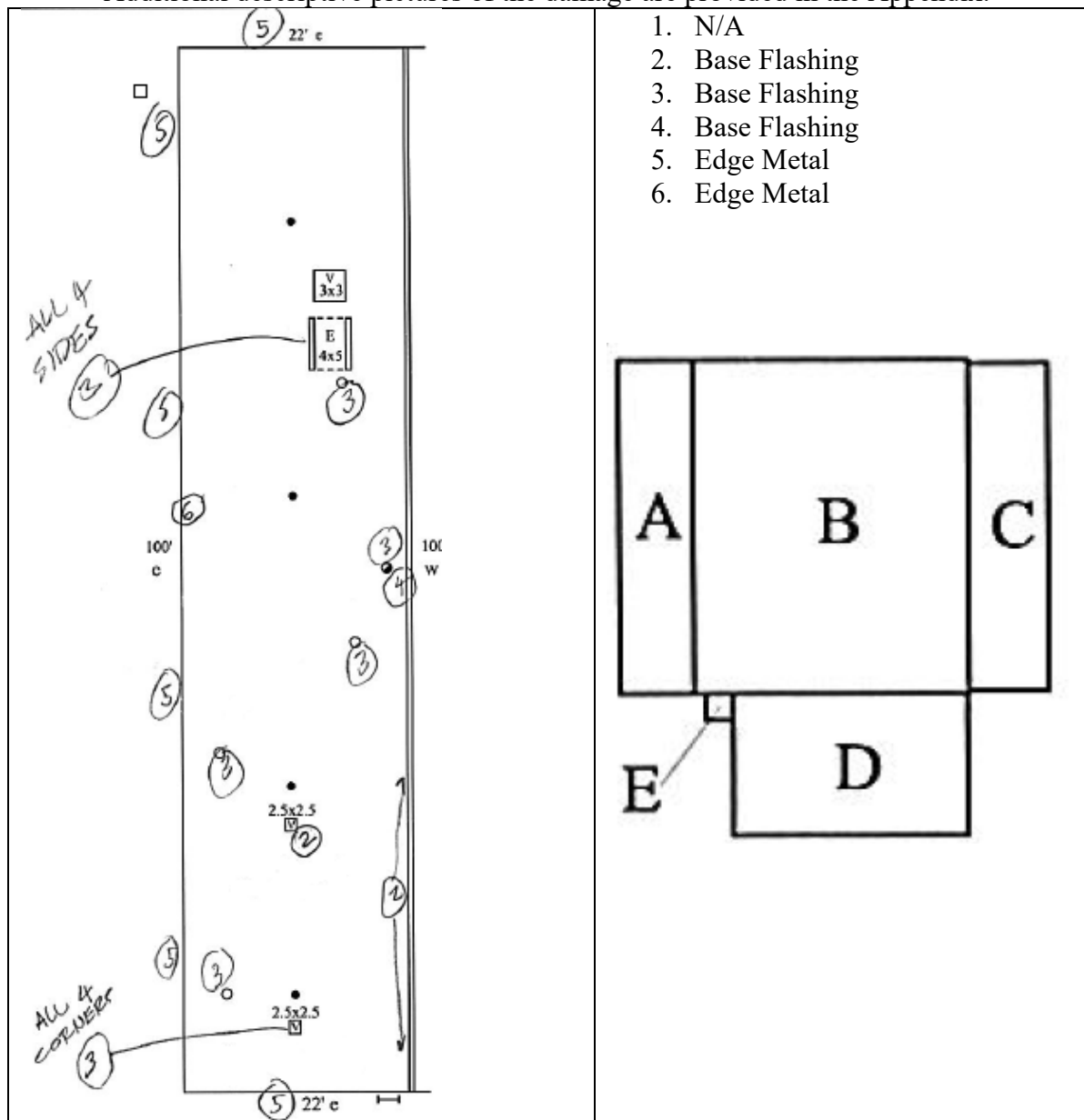


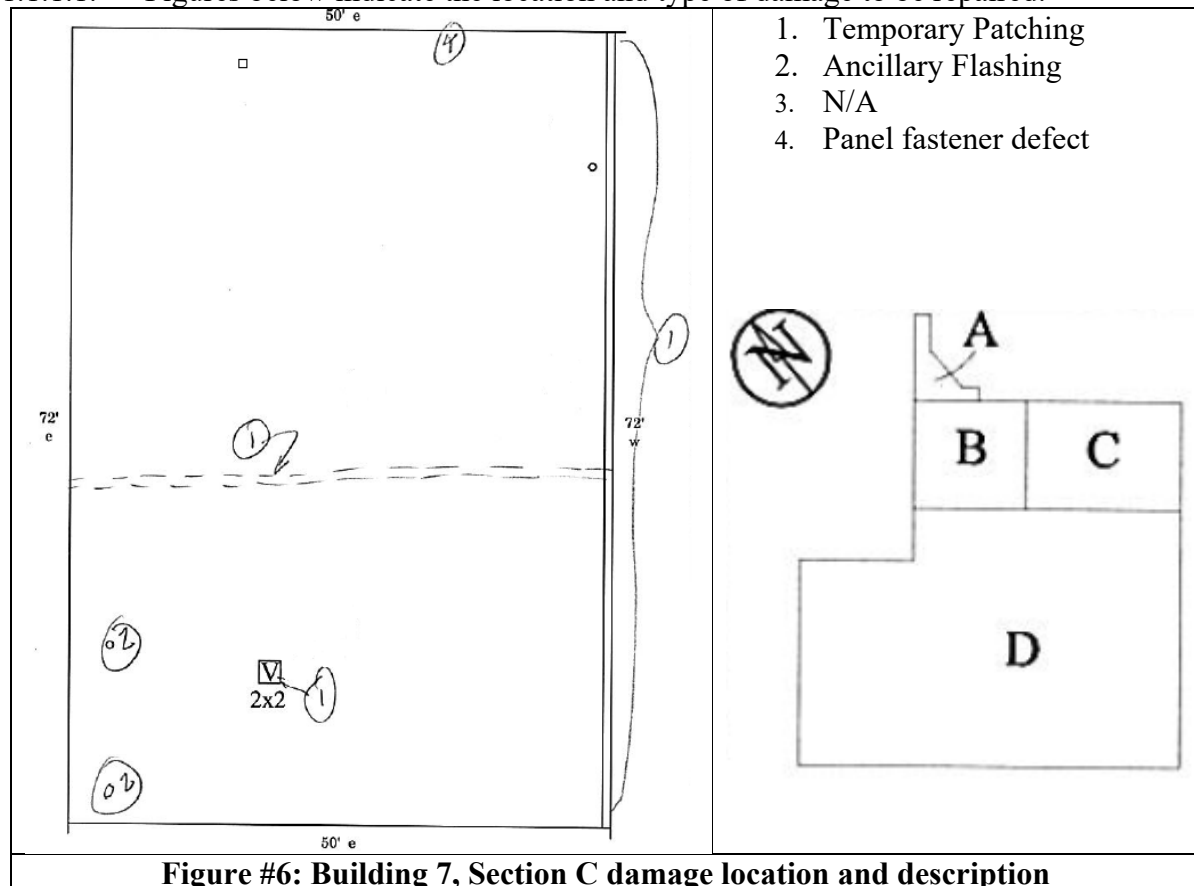
Figure #5: Building 18, Section A damage location and description

- 1.3.2. Contractor shall inspect the surfaces and repair any defects encountered following manufacturer (Garland Roofing System) recommendation and best practices including but not limited to
- 1.3.2.1. Repair damaged base flashing by overlaying each localized defect with new base flashing.
- 1.3.2.2. Remove temporary repair material from base flashing, reinforce patch as necessary and coat with heavy bodied asphalt coating.
- 1.3.2.3. Cut and re-secure unbonded base flashing, mechanically fasten slipped flashing and apply cold patch over all repairs.
- 1.3.2.4. Renail loose edge metal flange into solid support. Apply stripping ply over new fasteners.
- 1.3.2.5. Apply stripping ply over edge metal joints that are split.

1.1.Metal Roofs

1.1.1. Building 7 (Section C)

1.1.1.1. Figures below indicate the location and type of damage to be repaired.



- 1.1.1.2. Contractor shall inspect all the fasteners and replace loose fasteners with a shaft at least one size larger in diameter. Approximately 15 fasteners may need to be replaced.
- 1.1.1.3. Contractors shall investigate a leak over the wheel and tire shop. For bidding purposes, assume a repair equivalent to 100 fasteners and a 50 x 3 ft metal strip.
- 1.1.1.4. Remove patch, clean surface, and install new patch.
- 1.1.1.5. For ancillary flashing clean area and apply sealant, solder or elastomeric membrane patch.

1.1.2. **Building 20 (Section A)**

- 1.1.2.1. Figures below indicate the location and type of damage to be repaired.

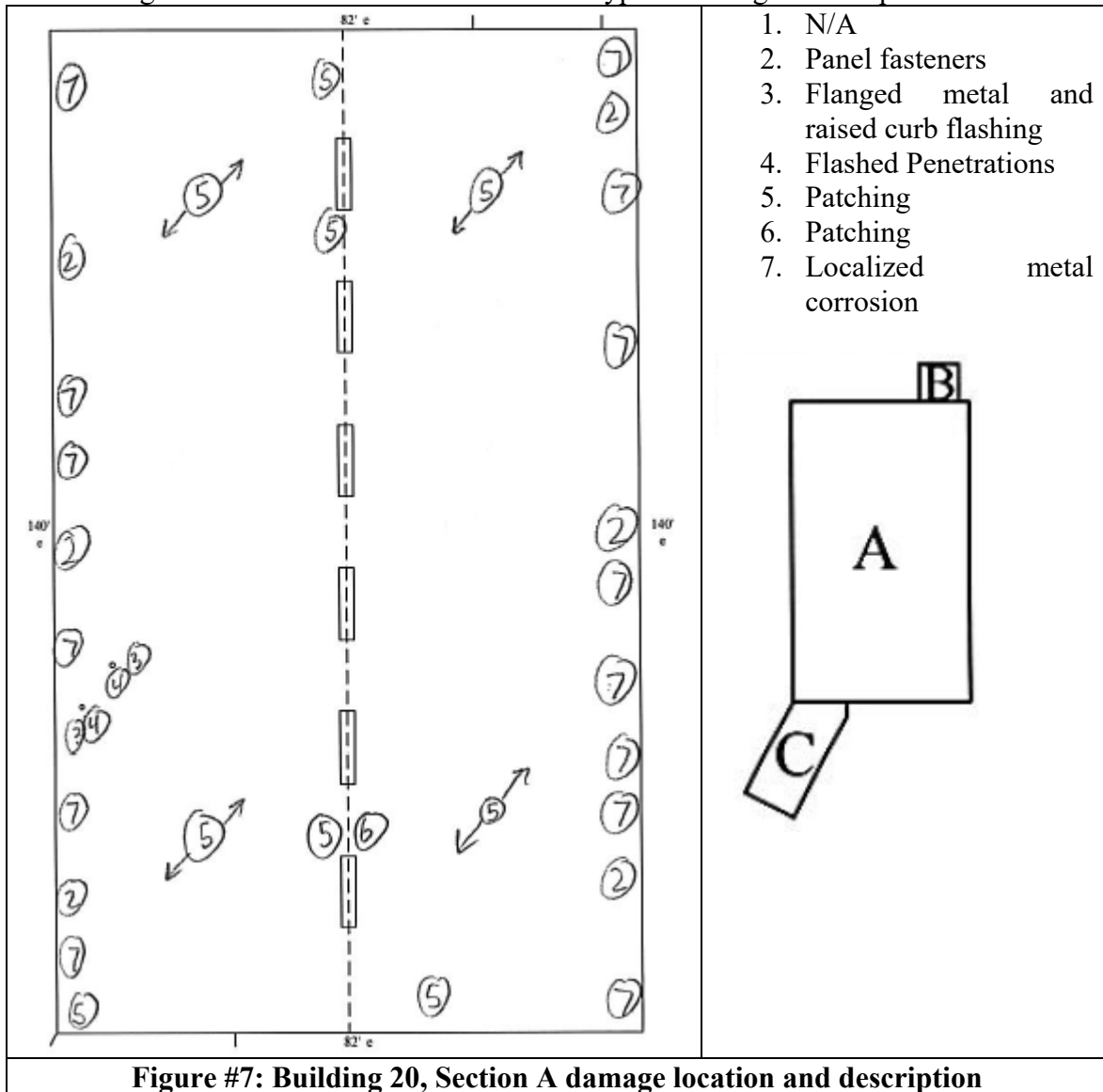


Figure #7: Building 20, Section A damage location and description



Figure #8: Roof 20, Section A current condition

- 1.1.2.2. Contractor shall inspect all the fasteners and replace loose fasteners and fasteners sealed improperly with a shaft at least one size larger in diameter. Expect approximately one hundred (100) fasteners to be defective.
- 1.1.2.3. Create a watertight seal on all fastener heads by applying a heavy dab of Coating to the tops of all fastener heads or approved polyurethane caulk around the fastener.
- 1.1.2.4. Remove patches, clean the surface, and install new patches.
- 1.1.2.5. For the flashings, clean and prepare the surface, re-glue seam, and seal edges per manufacturer instructions.
- 1.1.2.6. Contractor shall remove corrosion, prime, and coat the metal roof with an elastomeric coating. The roof area is 11,480 sf.
 - 1.1.2.6.1. Film thickness shall be at least 30 dry mils unless the manufacturer recommends a thicker coat to meet the specification.
 - 1.1.2.6.2. Membrane shall provide an elongation (ASTM D 412) of >650%, tensile strength (ASTM D 412) 1700 psi (with no reinforcement), tear resistance (ASTM D

1004) 700 lbs/in, energy start approved, a flash point of 110°F, non-volatile (ASTM D 75) 83%.

1.1.2.6.3. Urethane coating shall be applied at no less than two (2) gallons per one hundred (100) square feet for the field and no less than four (4.0) gallons per one hundred (100) square feet for seams.

1.1.2.6.4. Manufacturer shall provide at least 10 years warranty.

1.1.3. Building 42

1.1.3.1. Contractor shall coat the roof with multi-purpose, high build, urethane, elastomeric membrane. The roof area is 4,000 sf.

1.1.3.1.1. Contractor may need to remove the existing elastomeric membrane, clean, and prime the roof before applying the new material.

1.1.3.1.2. If reactivation of old the membrane is possible (and economically reasonable), the course of action shall be brought up during the Q&A period.

1.1.3.1.3. Film thickness shall be at least 30 dry mils unless the manufacturer recommends a thicker coat to meet the specification.

1.1.3.1.4. Membrane shall provide an elongation (ASTM D 412) of >650%, tensile strength (ASTM D 412) 1700 psi (with no reinforcement), tear resistance (ASTM D 1004) 700 lbs/in, energy start approved, a flash point of 110°F, non-volatile (ASTM D 75) 83%.

1.1.3.1.5. Urethane coating shall be applied at no less than two (2) gallons per one hundred (100) square feet for the field and no less than four (4.0) gallons per one hundred (100) square feet for seams.

1.1.3.1.6. Coating manufacturer shall provide at least 10 years warranty.



Figure #9: Roof 42 – Deteriorated elastomeric membrane

1.1.4. Buildings 55 and 56

1.1.4.1. Satellite imagery of the roof is in the figure below.



Figure #10: Building 55 & 56 roof condition as of spring 2022

- 1.1.4.2. Contractor shall remove corrosion, prime, and coat metal with equivalent paint. The entire roof shall be repainted as the roof condition has likely deteriorated since the photo was taken.
- 1.1.4.2.1. Alternatively, if this is cost-effective, Contractor may propose placing an EPDM instead of coating.

1.2. General

- 1.2.1. Contractor to provide material submittals as noted for approval of all materials prior to installation.
- 1.2.2. Material applications shall follow manufacturer's recommendations.
- 1.2.3. Contractor shall provide all equipment necessary to perform the work including any lifts, hoists, rigging.
- 1.2.4. Contractor shall notify the COR when the existing roof system has been removed to allow time to conduct a full evaluation of decking before beginning placement of the new system, where applicable.
- 1.2.5. Shall there be any contradiction between the UFC and this SOW, contractor shall confirm the path forward with COR.
- 1.2.6. Contractor shall fill out and sign a form DD1354 to signify the acceptance of the project by ANG and authorize the capitalization of the asset. The Project will not be approved past 95% payment without the DD1354 completed and ready for signature. Draft DD1354 is attached (Fill out the company information and the line cost per building. Line cost must add up to the project cost).
- 1.2.7. Contractor shall submit a Detailed Work Plan including work sequence and means to protect against or address inclement weather (including temperature, humidity, rain, and wind).

- 1.2.8. Contractor shall consider potential weather-related limitations in their work schedule.
 - 1.2.8.1. Contractor shall not apply roofing systems during inclement weather, when a 40% chance of precipitation or greater is expected, or when the temperatures are below 40°F.
 - 1.2.8.2. All material storage shall follow manufacturer recommendation. (temperature conditions, dry storage, etc)
 - 1.2.8.3. Proceed with roofing work only when existing and forecasted weather conditions will permit unit of work to be installed in accordance with manufacturer's recommendations and warranty requirements.
 - 1.2.8.4. Do not expose materials vulnerable to water or sun damage in quantities greater than can be weatherproofed during same day.
- 1.2.9. Due to budget constraints, the base may not be able to award all of the listed options. Please, provide an estimate following the below breakdown.
 - 1.2.9.1. Base cost of addressing Buildings 1 (Sec G only), 8, 18, 20, and 26.
 - 1.2.9.2. OPTION 1: inspect and repair Building 7 roof.
 - 1.2.9.3. OPTION 2: clean and coat Building 42 roof.
 - 1.2.9.4. OPTION 3: repaint buildings 55 and 56 roofs.
- 1.2.10. Some areas, such as Building 55 and 56, will require special escorting and access permission, even for badged individuals.

2. CONTRACTOR REQUIREMENTS

- 2.1. The contractor shall comply with all applicable installation/facility access and local security policies and procedures, which may be obtained from the Contracting Officer's Representative (COR). The contractor shall also provide all information required for background checks to meet installation access requirements to be accomplished by the local installation's Security Forces, Director of Emergency Services or local Security Office. The contractor shall ensure compliance with all personal identity verification requirements as directed by DoD, HAF and/or local policy. Should the Force Protection Condition (FPCON) change, the Government may require changes in contractor security matters or processes.
- 2.2. Contractor and all associated sub-contractors employees shall comply with adjudication standards and procedures using the National Crime Information Center Interstate Identification Index (NCIC-III) and Terrorist Screening Database (TSDB) (AFI 31-101 and AFI 10-245), applicable installation, facility and area commander installation/facility access and local security policies and procedures (provided by government representative), or, at OCONUS locations, in accordance with status of forces agreements and other theater regulations.
- 2.3. All contractor employees, to include subcontractor employees, requiring access to Government Installations, Facilities and Controlled Access areas shall complete AT Level I awareness training within 10 calendar days after contract start date or effective date of incorporation of this requirement into the contract, whichever is applicable. Certificates of completion for each affected contractor employee and subcontractor employee will be maintained by the COR or Antiterrorism Representative. AT level I Awareness Training is available through MyLearning by completing the Force Protection CBT. For Contractors

that do not require issuance of a CAC, local training will be provided during badge issuance at SFS via informational binder.

- 2.4. Requirement for OPSEC Training. In accordance with AFI 10-701, Operations Security, OPSEC PMs/SMO/SMNCOs/Coordinators will provide OPSEC training or training materials to contract employees within 90 days of employees' initial assignment to the contract and annually thereafter. General organizational orientations may need to be supplemented by duty-related orientations in the work center targeted toward specific critical information and vulnerabilities associated with the work. Initial training (OPSE 1301 - OPSEC Fundamentals) and refresher training (Protecting Sensitive Information) are both available on the MyLearning website. For Contractors that do not require issuance of a CAC, local training will be provided during badge issuance at SFS via informational binder.
- 2.5. The use and possession of controlled substances to include marijuana (medical or recreational use) on the installation is in violation of Title 10 US Code 912a. Art 112a. Contractors are notified this policy is strictly enforced and violators will be denied entry. Personnel caught on the installation can be prosecuted.
- 2.6. The Contractor shall provide all personnel and necessary equipment to establish an adequate and safe work zone. OSHA is applicable at the site and inspectors appear unexpectedly.
- 2.7. Contractor is responsible for site cleanliness and shall remove any waste or debris after the work is complete. All materials shall be secured to prevent loose objects from blowing and hindering flying operations in any manner.
- 2.8. The Contractor shall recycle to the greatest extent possible and turn in weight slips to 109 Environmental Management Office for construction debris.
- 2.9. The Contractor shall bring any unforeseen project conditions to the attention of the COR immediately. Unexpected or differing site conditions, which may alter the scope of work, shall be approved by the contracting officer (KO) prior to such work being performed.
- 2.10. The Contractor must get approval from the COR prior to any utility shutdowns. (do not have contractor contact production control directly)
- 2.11. The Contractor shall notify the COR prior to delivery of any material or equipment to the site. The contractor shall ensure someone is available to receive delivered materials and able to store them safely in an area to be coordinated with the government project manager. Any materials delivered without prior coordination and without having someone to take receipt, shall not be accepted and turned away.
- 2.12. Contractor shall repair or replace in kind any property that is damaged.
- 2.13. Contractor hours are 0700-1530 Monday thru Friday, excluding Government holidays.

3. PROPOSED PROJECT SCHEDULE

The Project shall begin 14 days after the Notice to Proceed is issued. Due to potential weather constraints, such as temperatures being too low, the start date may be changed with approval of Contracting Officer. The project shall be completed within 90 days following the Notice to Proceed or agreed start date.

APPENDIX

