

REVISION

REV	SHT	DESCRIPTION	BY/DATE	APPROVED/DATE

Distribution Statement:  
This drawing does not require a distribution statement in accordance with DoD 5200.1-R, AP3.2.1, this document is unclassified. It does not warrant an FOUO Statement. This drawing does not contain any information related to critical technology as defined by NAVSEAINST 5230.12.

No deviations shall be made without authorization, unless noted otherwise.

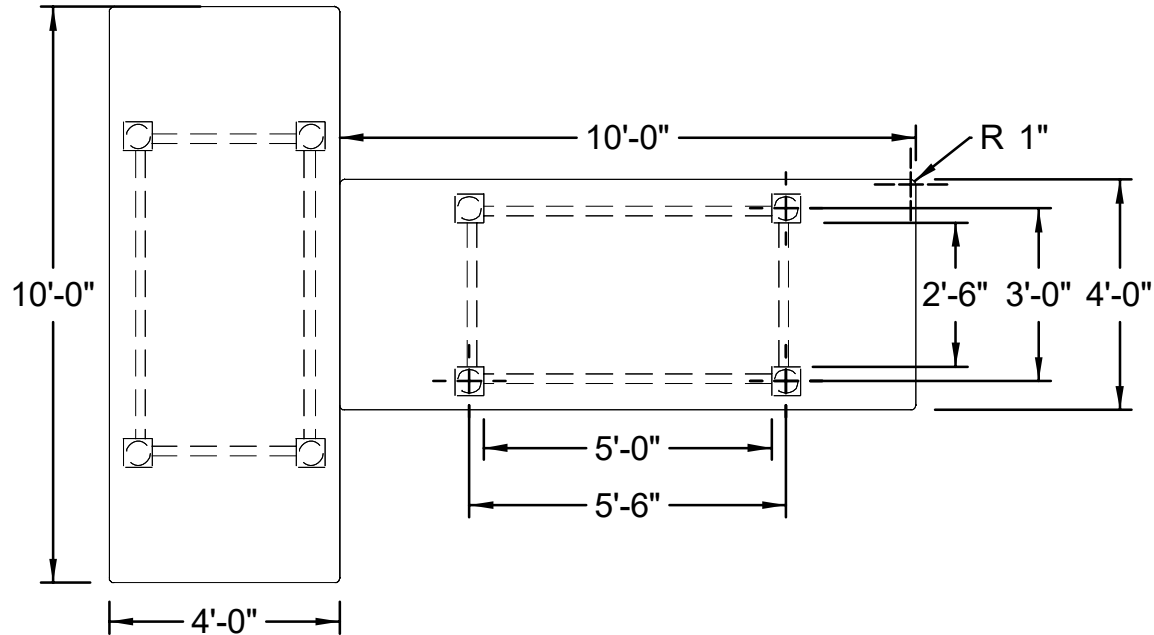
CONCURRENCE			APPROVAL			DEPARTMENT OF THE NAVY [REDACTED] BREMERTON, WASHINGTON			
CODE	SIGNATURE	DATE		SIGNATURE	DATE	OPTICAL TABLE - T - CONFIGURATION			
[REDACTED]	[REDACTED]	[REDACTED]	BRANCH SUPV.						
			CHECKED						
			[REDACTED]						
GENERAL TOLERANCES						SIZE	CAGE CODE	DWG NO.	REV.
Under 12 inches +/- 1/16"						A	82522	980S-1-MISC-1	-
12 to 72 inches +/- 1/8"									
Over 72 inches +/- 1/4"						SCALE: NONE		SHEET: 1 OF 3	

## GENERAL NOTES

1. This drawing provides dimensional details for an Optical Table T-configuration. This configuration is obtained by mechanically coupling two (2) 10' x 4' Optical Tables to create a rigid table. This tabletop shall float on an active air support system. Tabletop working height shall be 32 inches. Table capacity shall be 8,000 lbs.
2. Tabletop details: each tabletop shall be W=48 inches, L=120 inches, thickness = 8 inches. Tabletop construction shall consist of: top plate, steel bottom plate, honeycomb steel core, steel sidewalls, and epoxy bonded cups under each hole. The top plate shall be 3/16 inch thick ferromagnetic stainless steel with matte finish, flatness +/- 0.005". The top plate shall have gridded holes 1" o.c., holes shall be countersunk 1/4" - 20 UNC threads. The top and bottom plates shall have rounded corners (1" radius). Nominal structural damping, laboratory grade.
3. Table supporting system shall consist of a 4,000 lb support base for each 4' x 10' table. The support base shall be self-leveling vibration isolation system with gimbal isolators.
4. The tabletop shall include earthquake restraints to the support structure. The support structure shall include earthquake restraints to the floor.
5. The system shall include the air compressor. This compressor shall be NRTL listed and shall operate below 40 dBA. (Werther Panther P50 TC AL with CSA approval is suitable).
6. Technical POC: [REDACTED]

SIZE	CAGE CODE	DWG NO.	REV.
A	82522	980S-1-MISC-1	-
SCALE: NONE		SHEET: 2 OF 3	

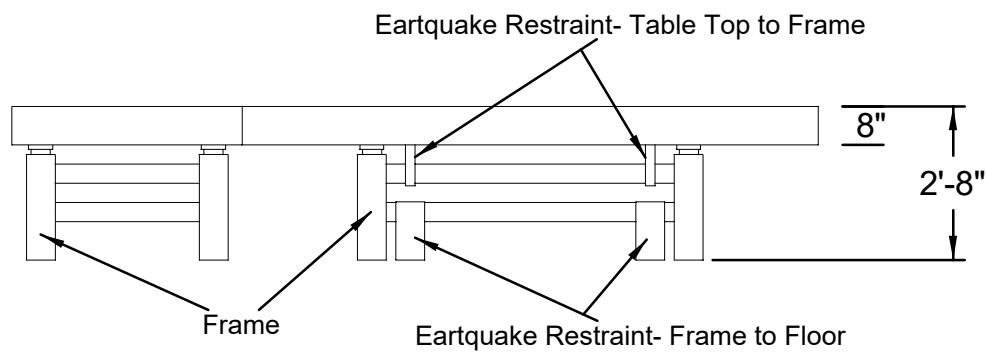
A



Tabletop details not shown  
Air Compressor not shown

OPTICAL TABLE - T-CONFIG: PLAN VIEW

B



OPTICAL TABLE - T-CONFIG: ELEVATION VIEW

SIZE	CAGE CODE	DWG NO.	REV.
A	82522	980S-1-MISC-1	-
SCALE: NONE		SHEET: 3 OF 3	

A

B