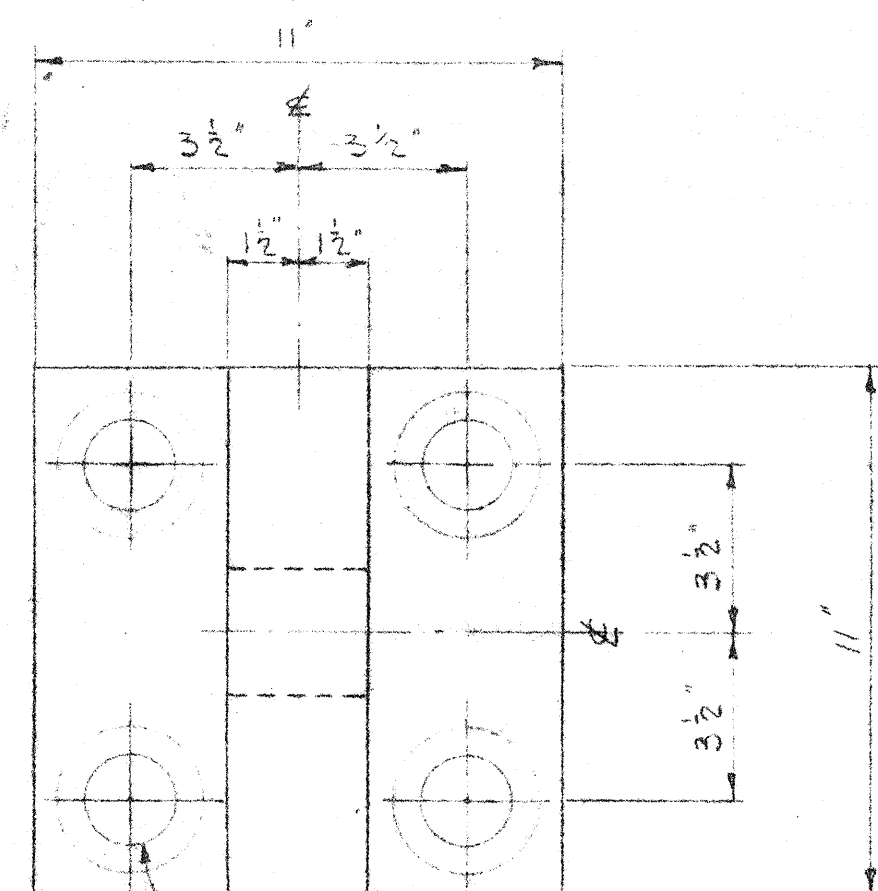
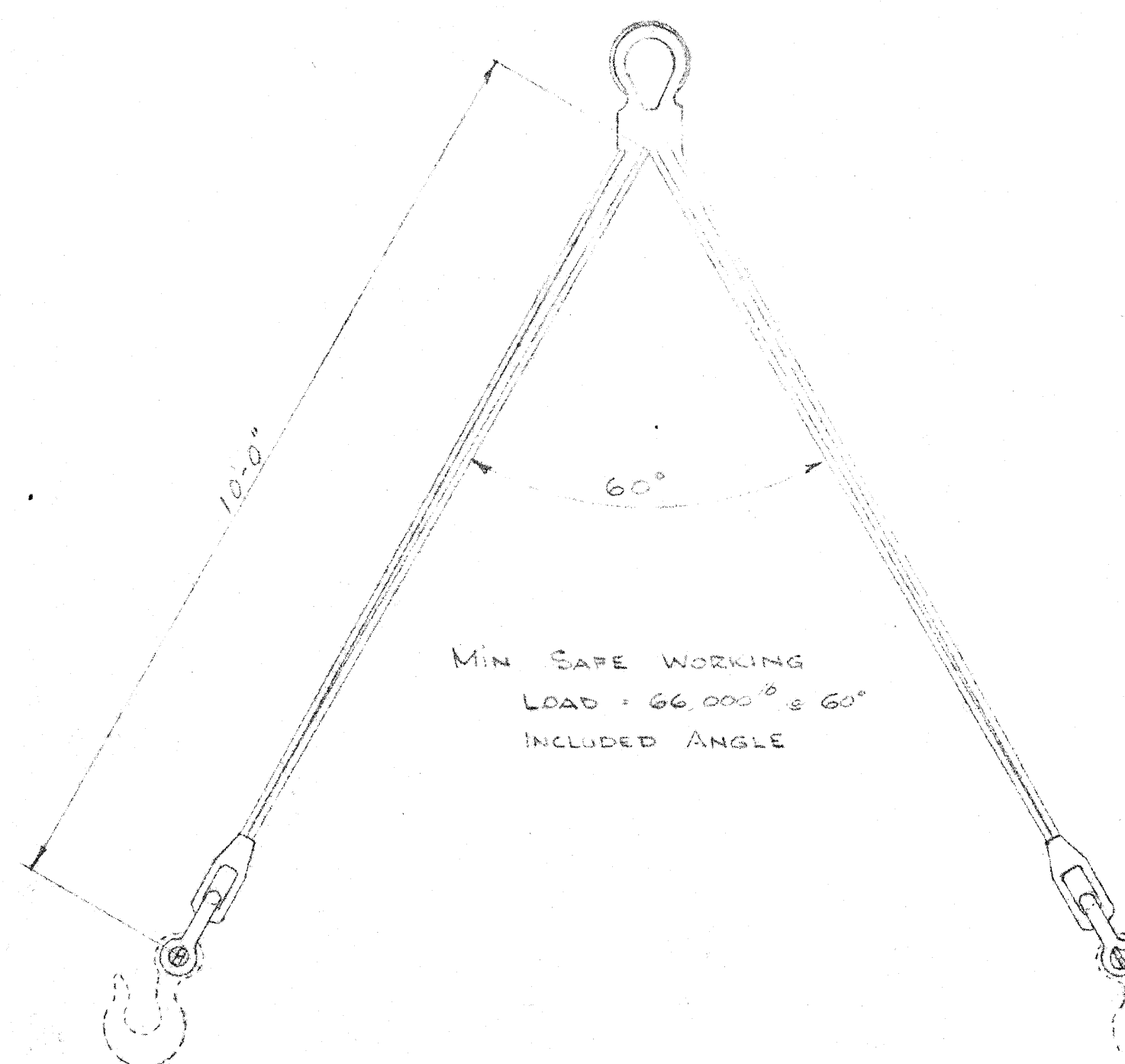
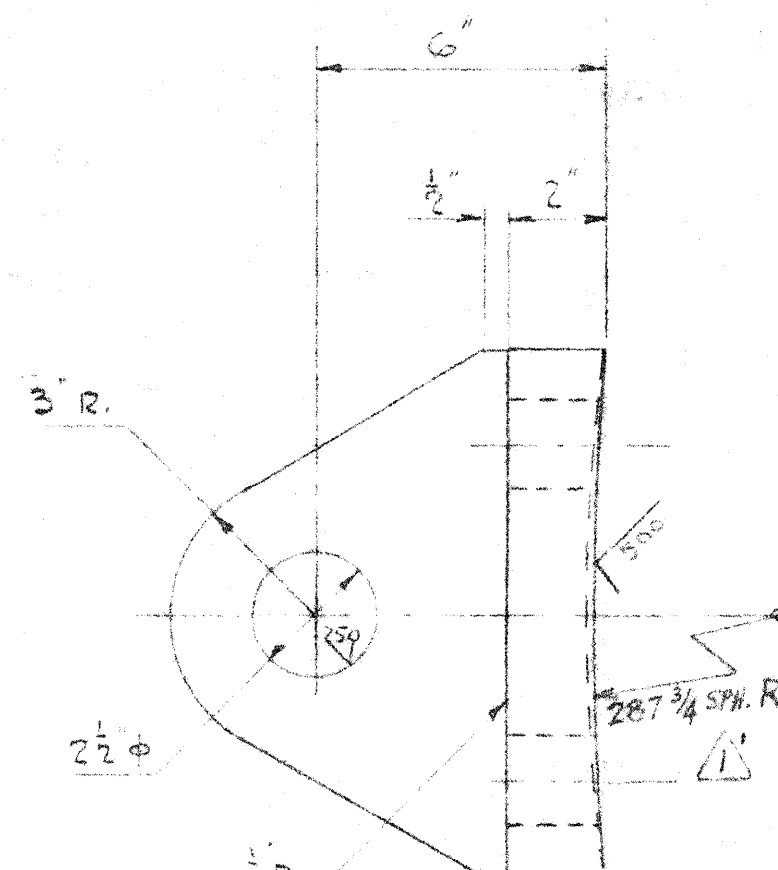


F



4 HOLES 3 1/2" ϕ
5" SPACE 3" ϕ

9101 DISC LIFTING EYE 4 REQ
MATL C. STL QQ-C-681b CL. 2
PATTERN NO 5233-9101P



9107 DOUBLE PART 2-LEG SLING 2 REQ
DOUBLE LEGS, CLOSED SOCKETS
2" SCREEN PIN ANCHOR SHACKLES
WITH 105 TON MIN BREAKING STRENGTH

MIN SAFE WORKING
LOAD = 66,000 \div 60°
INCLUDED ANGLE

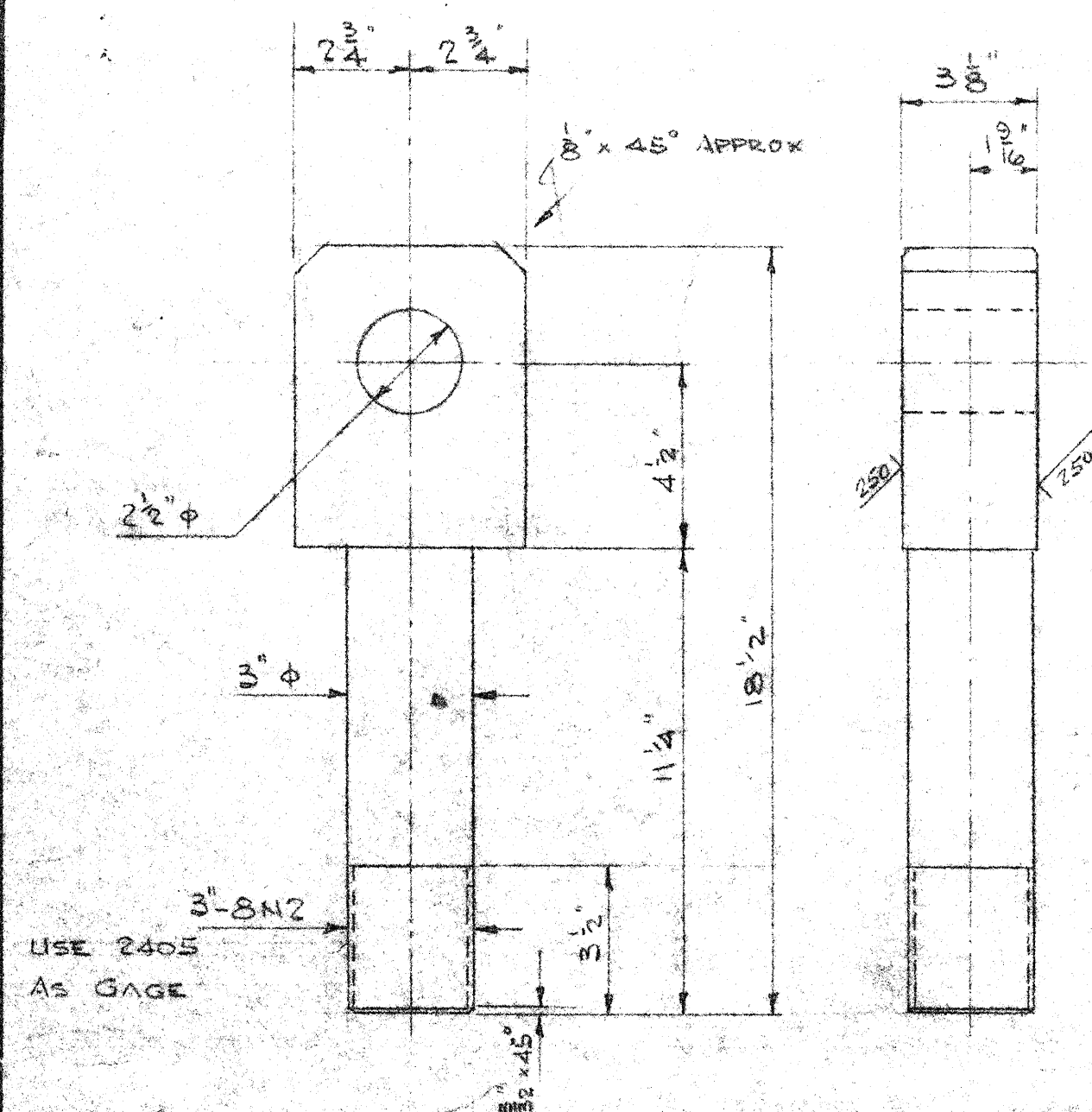
9108 EYE HOIST HOOKS
ON ONE SLING ASSEMBLY ONLY
BOTH "B3, 8.4 TON RATED HOOK

NOTE:
HOOKS PART NO 9108 TO BE USED
FOR HANDLING TRANSITIONS ONLY

5233-9100

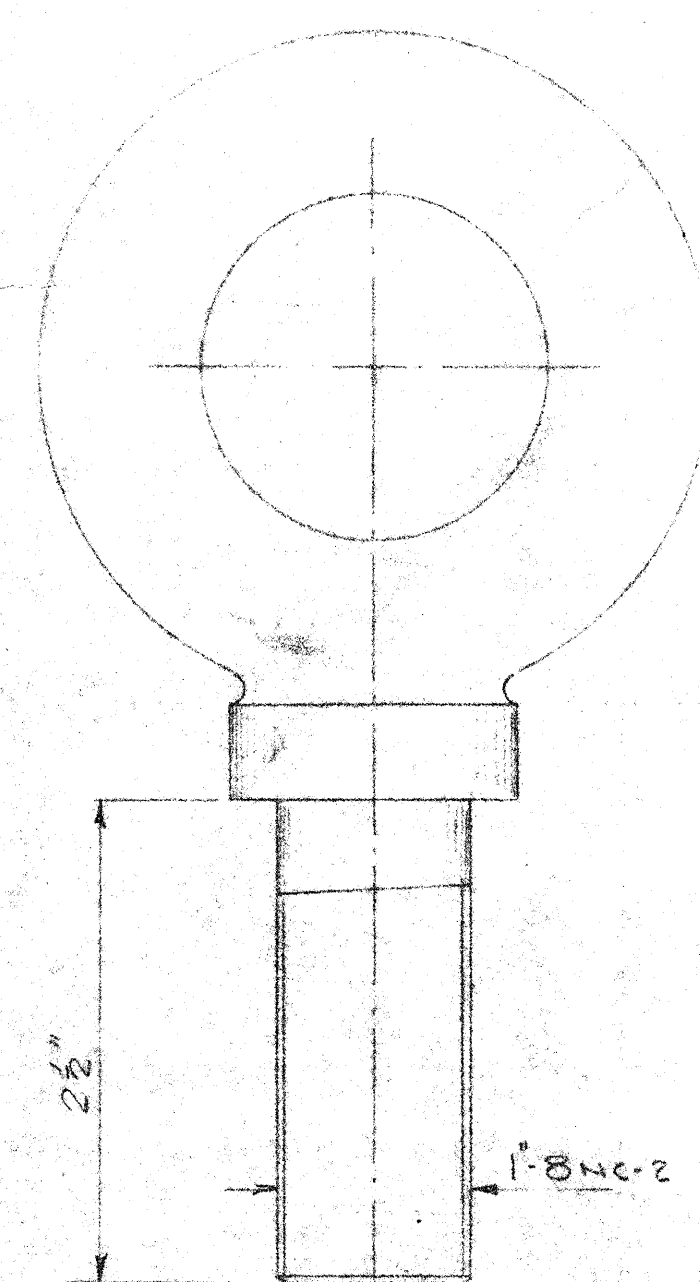
5233-9100

D

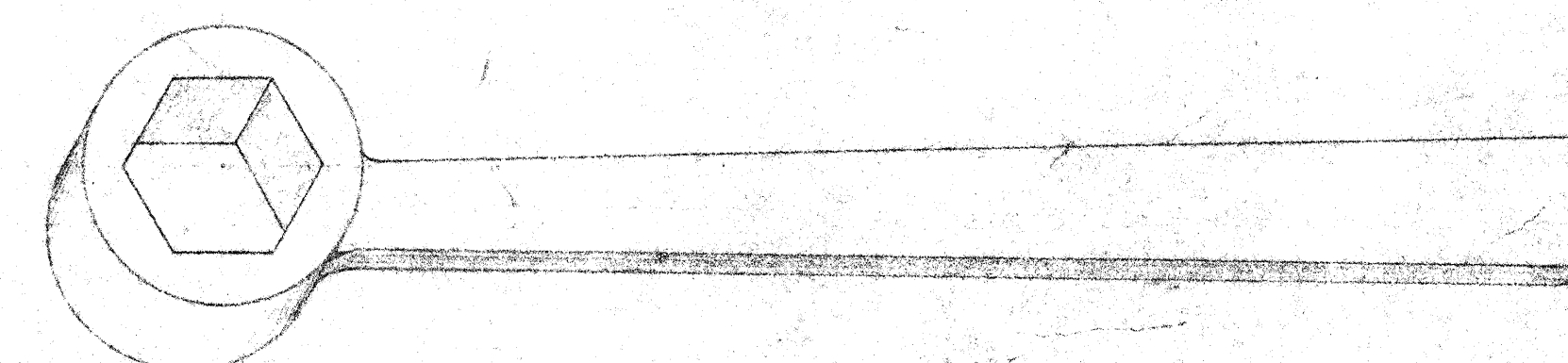


USE 2405
AS GAGE

9102 LOWER BODY LIFTING EYE 4 REQ
MATL STL A191 - C1015/1020
REMOVE ALL SHARP EDGES



9105 EYE BOLT 10 REQ
STD WILLIAMS VULCAN # 30



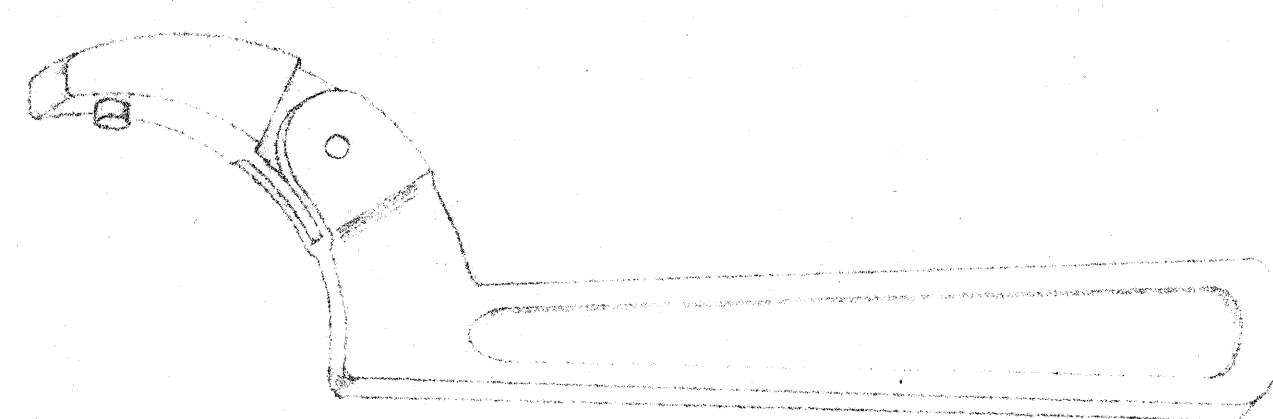
9109 WRENCH THREIST B36 ADJ. ONE REQ
WILLIAMS HEX-BOX WRENCH # B19 B

5233-9100

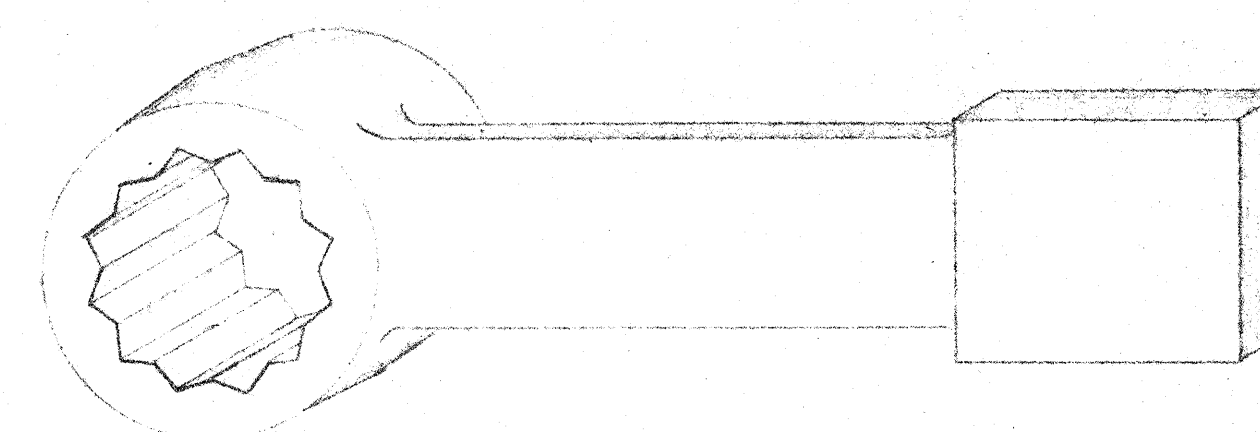
5233-9100

5233-9100

B



9106 HOOK SPANNER B36 ADJ. ONE REQ
WILLIAMS ADJUSTABLE HOOK SPANNER # 0-474 A



9110 WRENCH BODY NUT ADAPTER ONE REQ
WILLIAMS WILLIAMS SPATERNCH 12 POINT BOX
HEAVY STRIKING WRENCH # EFH-185 A

A

PARTS LIST

PART NO.	SUB PART NO.	NO REQD	DESCRIPTION	MATERIAL
9101		4	CASTING - DISC LIFTING EYE	CAST STEEL 1032-2814 F. R. E.
		1	PATTERN - 5233-9101P	WOOD
9102		4	3 1/2" x 5 1/2" FB. x 1 1/2"	STL 52105-1020
9103		10	EYE BOLT - PATTERN - 1" BAC 2	WILLIAMS WVULCAN # 30
9104		1	WILLIAMS ADJ HOIST SPANNER	# 0-474 A
9107		2	BOTH DOUBLE PART 2-LEG SLING	DETAIL
9108		2	EYE - HOIST HOOKS FOR ABOVE	STL
9109		1	WILLIAMS HEX. BOX WRENCH	# B19 B
9110		2	WILLIAMS 12PT BOX-STRIKING WRENCH	# EFH-185 A
9111		1	GREASE GUN - LINCOLN	# 1037

INSPECTION: BY WISCO 4/86
CLEANING: NONE
PAINTING: GRAY MACHINE SURFACES WITH CARBOLINE
1072 FOR SHIPPING
WELD PROCEDURE: NONE
STRESS RELIEVE: NONE
TESTING: NONE

LUBRICATION: NONE
TOLERANCES: SHOWN

CUSTOMER'S APPROVAL

REFERENCE DRAWINGS

MARK	ZONE	REVISIONS	BY	DATE	REF

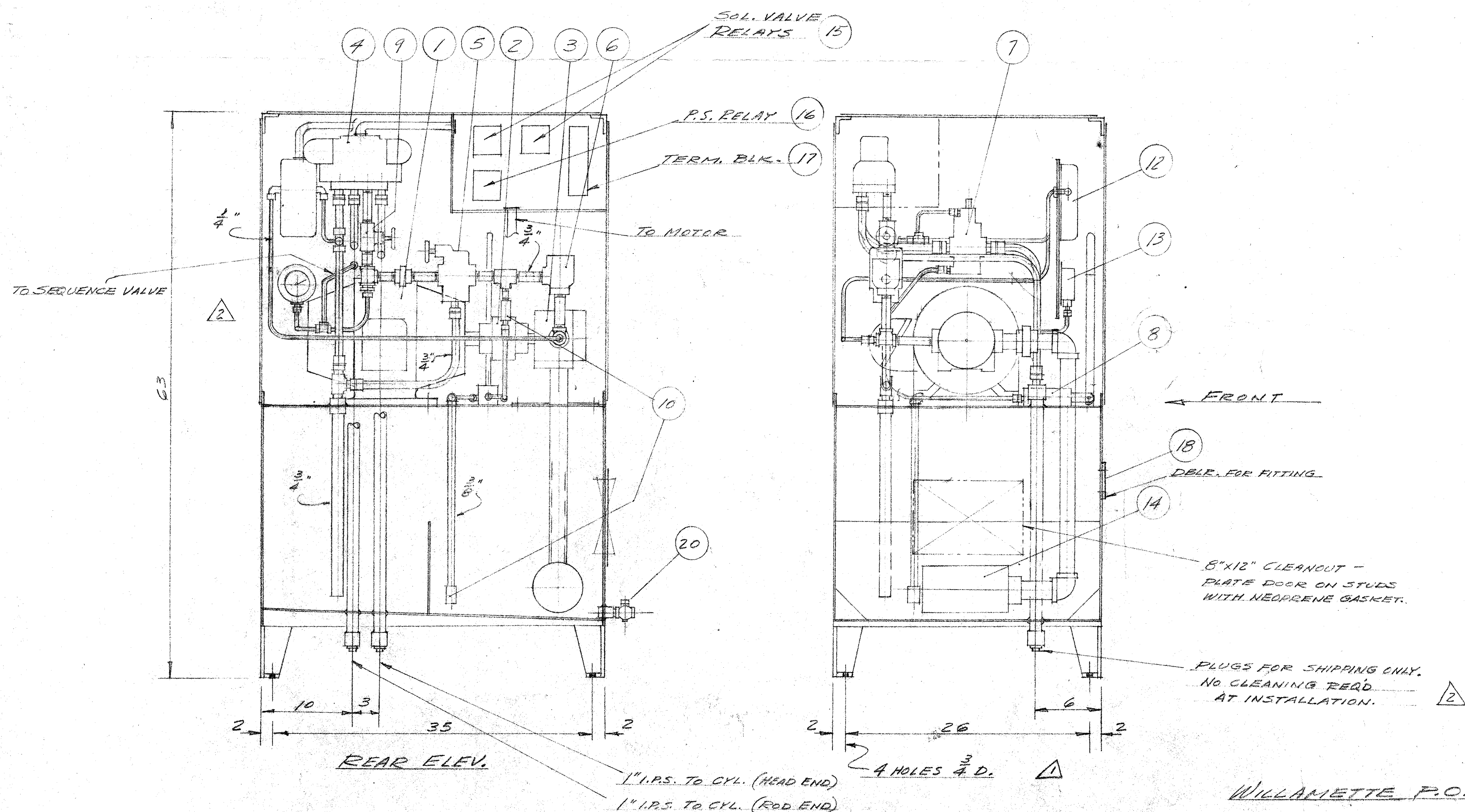
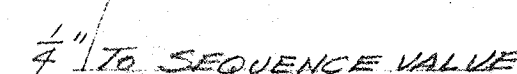
FOR CONTRACT
DA-38-015-CIVENG-53-113

TITLE
FORT PECK DAM
B-O BUTTERFLY VALVE

SPECIAL TOOLS & LIFTING DEVICES

WILLAMETTE IRON AND STEEL COMPANY
2800 N. W. FRONT AVENUE
PORTLAND 10, OREGON

DATE ISSUED
FILE NO.



NOTES

1. PIPING TO BE SCH. 40 BLK. WITH 300 # M.I. FITTINGS ON PRESSURE LINES, OR $\frac{3}{4}$ " X .049" STEEL HYDRAULIC TUBING WITH PARKER FERRULOK STEEL FITTINGS, AS SHOWN.

INSTRUMENT & HAND PUMP LINES TO BE $\frac{1}{4}$ " X .035" COPPER WITH BRASS FERRULOK FITTINGS. ②

2. OIL TANK & INSIDE PIPING BLASTED & PAINTED 3 COATS VINYL RESIN. CABINET & PIPING TO BE PAINTED 1 COAT RED OXIDE PRIMER.

		<div style="border: 1px solid black; padding: 10px; text-align: center;"> <p>APPROVED</p> <p>FOR</p> <p>CONSTRUCTION</p> <p>U. S. ARMY ENGINEER DISTRICT, GARRISON</p> <p>CORPS OF ENGINEERS</p> <p>JUN 17 1959 D.A.</p> </div>		
△	3-6-59	Notes added. Press. sw. line changed per C/E notes. Drain valve added.	S.	
△	12-27-58	Misc. minor changes per C/E Htr. Dec. 8. Anch. bolt diamen. added.	S.	
MARK DATE		REVISION	BY	
<div style="border: 1px solid black; padding: 5px;"> <p style="text-align: center;">UNION STEEL MFG. INC.</p> <p style="text-align: center;">1121 W. HANFORD SEATTLE, WASH.</p> </div>				
<p>ARRANGEMENT</p> <p>FORT PECK B.F. HYD. CONTROL</p>				
S.	10-2-58	1/2" = 1'	1454-1	