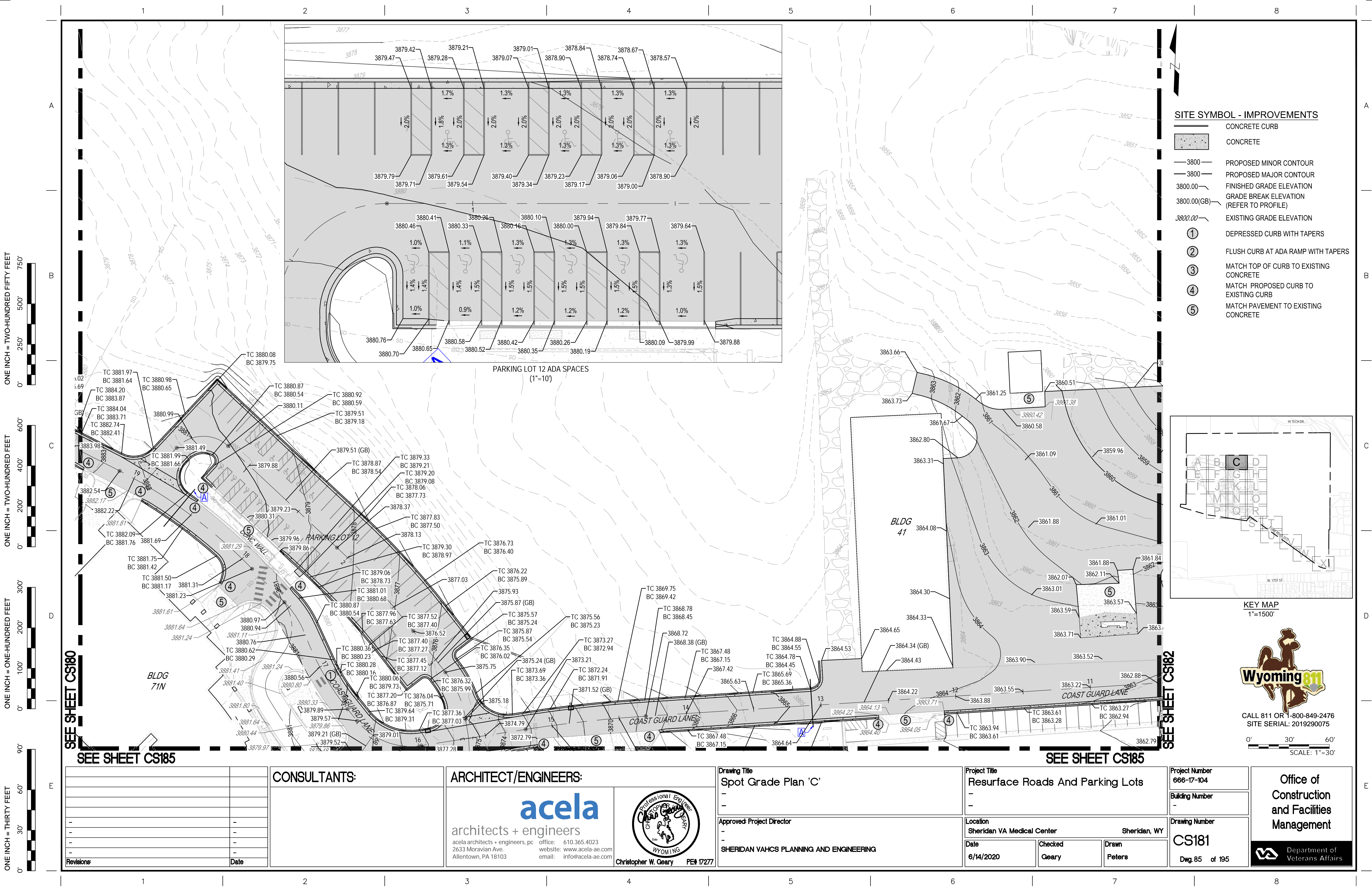
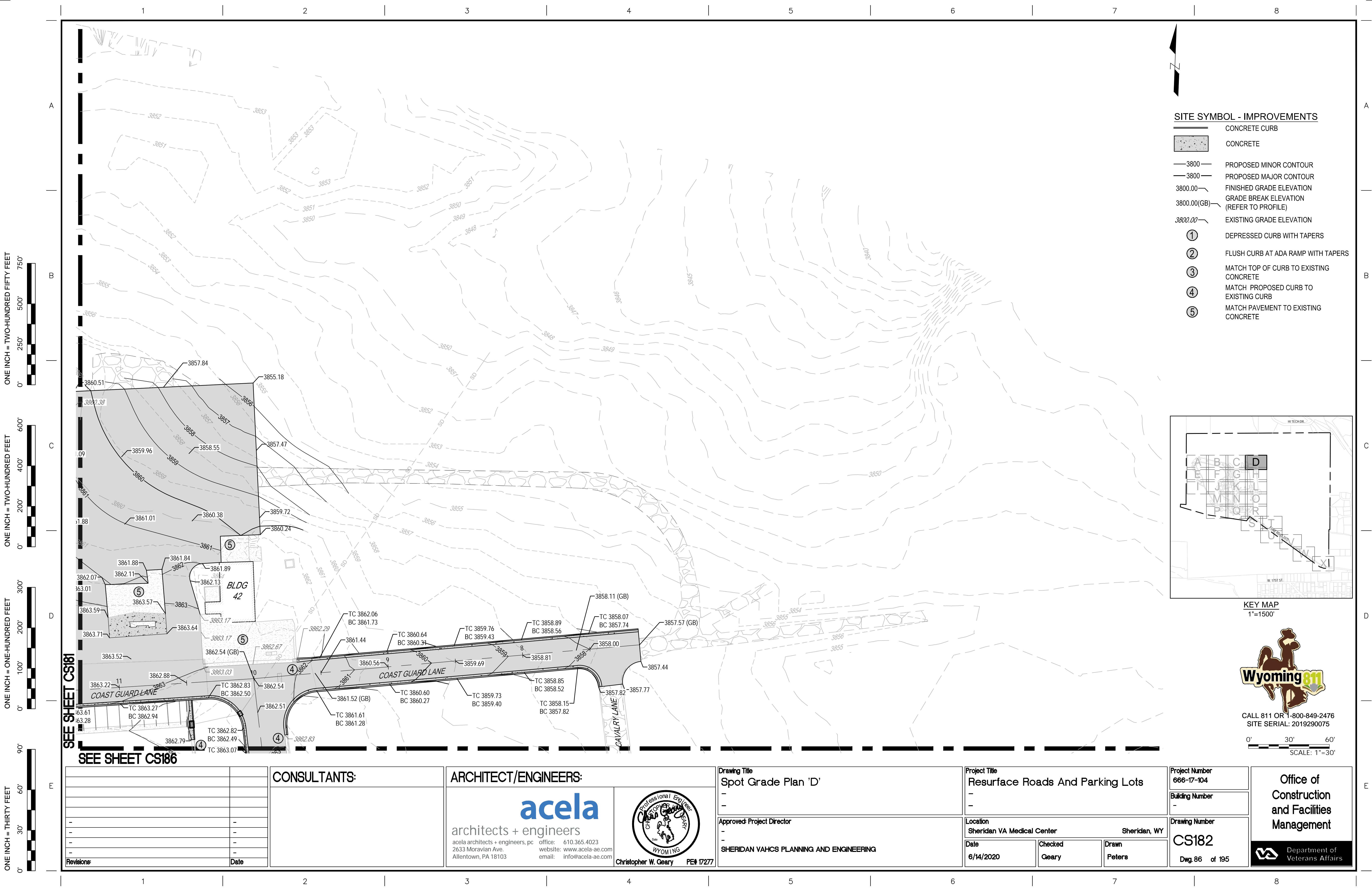
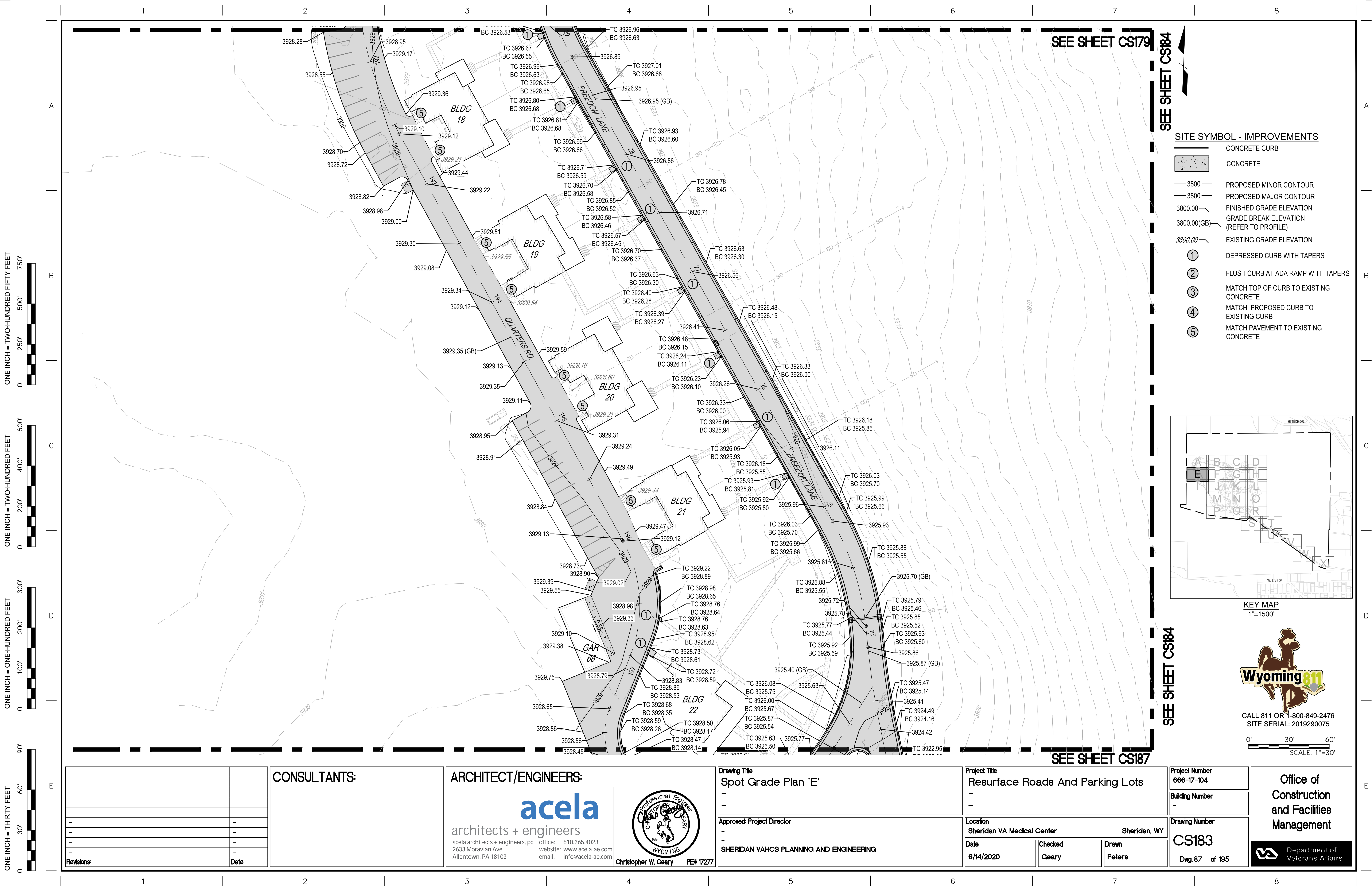
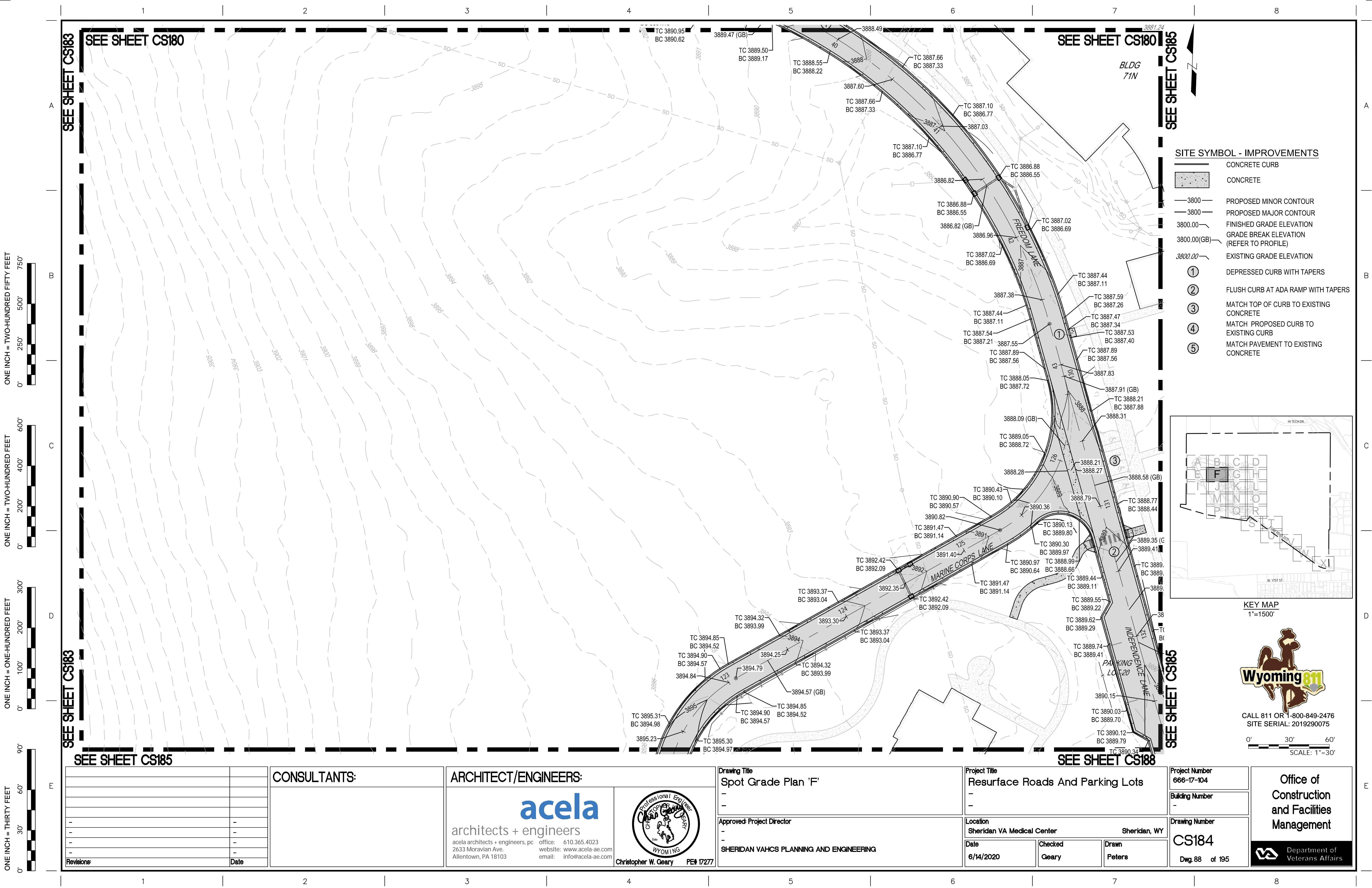


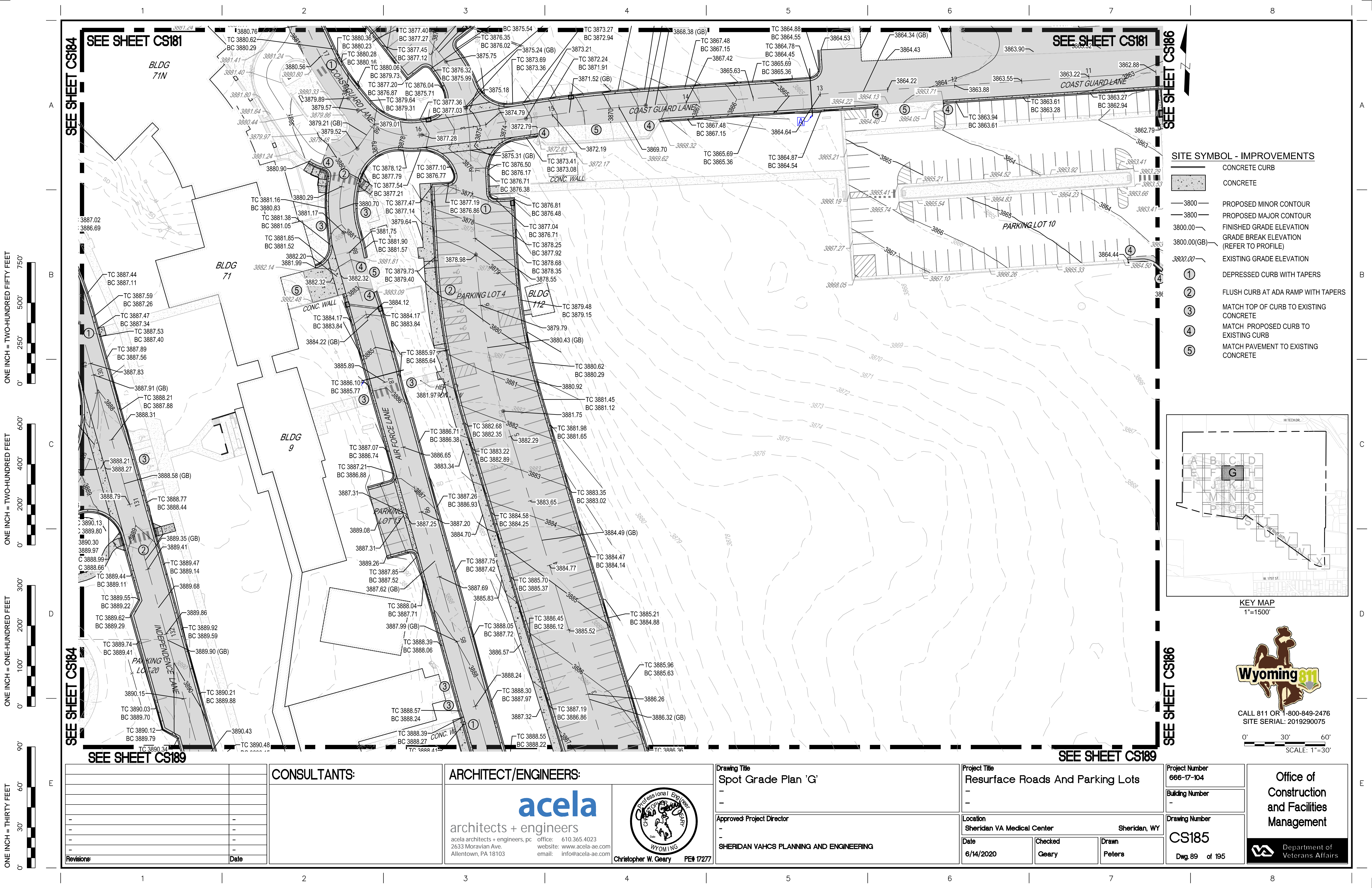
Department of
Veterans Affairs



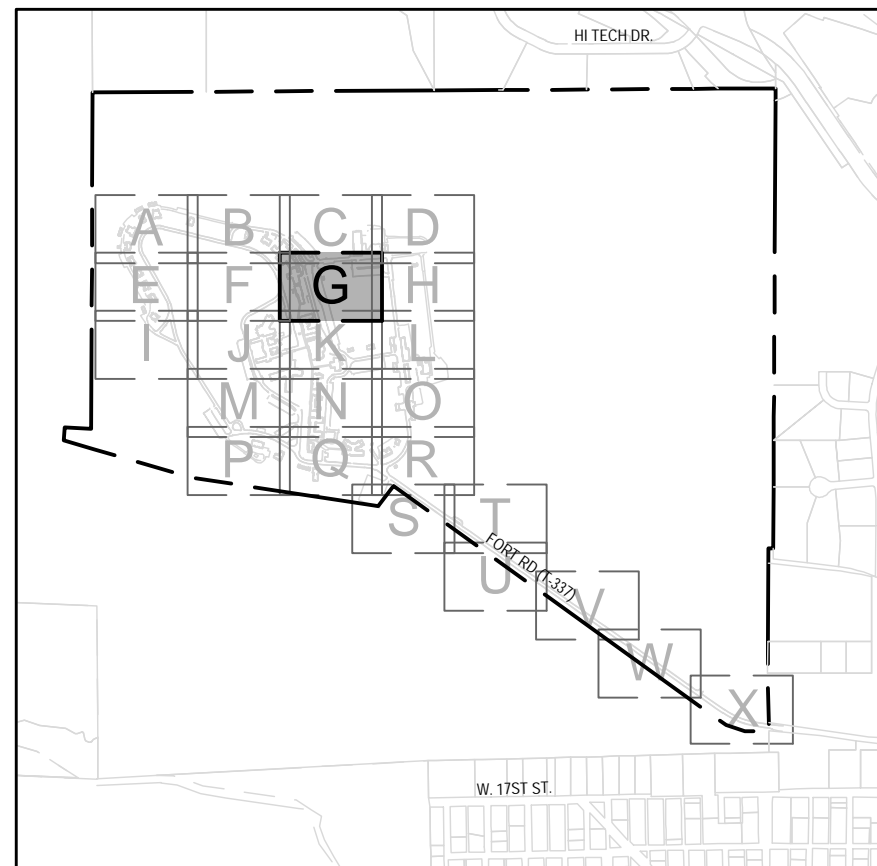








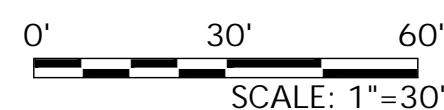
- SITE SYMBOL - IMPROVEMENTS**
- CONCRETE CURB
 - CONCRETE
 - PROPOSED MINOR CONTOUR
 - PROPOSED MAJOR CONTOUR
 - FINISHED GRADE ELEVATION
 - GRADE BREAK ELEVATION (REFER TO PROFILE)
 - EXISTING GRADE ELEVATION
 - DEPRESSED CURB WITH TAPERS
 - FLUSH CURB AT ADA RAMP WITH TAPERS
 - MATCH TOP OF CURB TO EXISTING CONCRETE
 - MATCH PROPOSED CURB TO EXISTING CURB
 - MATCH PAVEMENT TO EXISTING CONCRETE



KEY MAP
1"=1500'



CALL 811 OR 1-800-849-2476
SITE SERIAL: 2019290075



| Revisions: | Date |
|------------|------|
| | |
| | |
| | |
| | |
| | |
| | |
| | |
| | |
| | |
| | |

CONSULTANTS:

ARCHITECT/ENGINEERS:

acela architects + engineers, pc
2633 Moravian Ave.
Allentown, PA 18103

Christopher W. Geary PE# 17277

Drawing Title
Spot Grade Plan 'G'

Approved Project Director
SHERIDAN VAHCS PLANNING AND ENGINEERING

Project Title
Resurface Roads And Parking Lots

Location
Sheridan VA Medical Center Sheridan, WY

Date
6/14/2020

Checked
Geary

Drawn
Peters

Project Number
666-17-104

Building Number
-

Drawing Number
CS185

Dwg. 89 of 195

Office of Construction and Facilities Management

Department of Veterans Affairs

