

# DATA SHEET

**ITEM NAME:** Large Waste Receptacle

**ITEM CODE:** A2

**MANUFACTURER:** Alle

**PRODUCT NAME:** Bruiser Series

**PRODUCT #:** TEM2031SA



**DIMENSIONS:** 18" dia x 32"h

**FINISH:** Satin Aluminum SA

**UPHOLSTERY:** N/A

**DESCRIPTION:** Provide large waste receptacle with:  
-33 gallon capacity  
-top open liter

**Zone 1 Quantity**

Lrg Conf Rms- 0

**Zone 2 Quantity**

Lrg Conf Rms- 2

**Zone 3 Quantity**

Lrg Conf Rm- 1

**TOTAL QUANTITY:** 3

# DATA SHEET

**ITEM NAME:** Recycle Receptable

**ITEM CODE:** A3

**MANUFACTURER:** Alle

**PRODUCT NAME:** Plastic Recycling Wastebasket

**PRODUCT #:** AL257BLR



**DIMENSIONS:** 14"w x 8 1/2"d x 16"h

**FINISH:** Blue (BL)

**UPHOLSTERY:** N/A

**DESCRIPTION:** Provide recycle receptacle with:  
-UL rated fire retardant  
-27 Qt

**Zone 1 Quantity**

Near Copiers- 6

**Zone 2 Quantity**

Near Copiers- 8

**Zone 3 Quantity**

Near Copiers- 13

**TOTAL QUANTITY:** 27

# DATA SHEET

**ITEM NAME:** Recycling Center  
**MANUFACTURER:** Alle  
**PRODUCT NAME:** Recycling Center  
**PRODUCT #:** FG3616

**ITEM CODE:** A4



**DIMENSIONS:** 36"w x 16"d x 28"h  
**FINISH:** Warm Gray  
**UPHOLSTERY:** N/A

**DESCRIPTION:** Provide recycling center with:  
-rectangular recycling center with 3 openings  
-standard labels, Trash Only, Cans Only, Plastic Only

## Zone 1 Quantity

Break Areas/ Kitchenettes- 2

## Zone 2 Quantity

Break Areas/ Kitchenettes- 2

## Zone 3Quantity

Break Areas/ Kitchenettes- 2

**TOTAL QUANTITY:** 6

# DATA SHEET

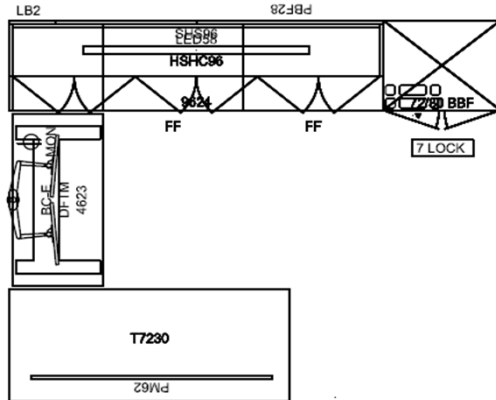
**ITEM NAME:** Freestanding U-Shaped Desk, Division

**ITEM CODE:** D1

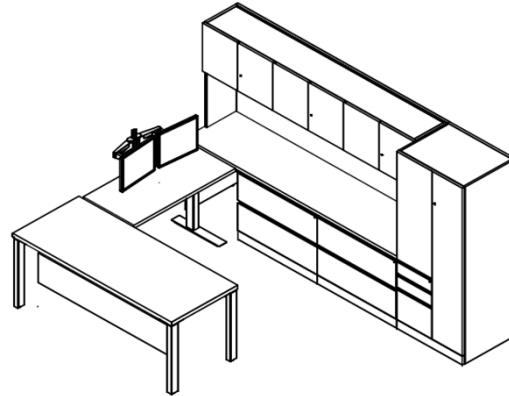
**MANUFACTURER:** Knoll

**PRODUCT NAME:** Reff Profiles

**PRODUCT #:** Varies



Plan



Isometric

**DIMENSIONS:** 10' 6" x 8' 6" overall desk dimension

**FINISH:** Plastic Laminate: Grey Ash 142; Pulls: Chrome

**UPHOLSTERY:** Tackboard: Circuit W1754/2, Color: Frequecy

## DESCRIPTION:

- 72" x 30" Table Desk with half height modesty panel
- 42" x 24" Tone extended range adjustable height table
- 96" x 24" Credenza with (2) 30"W 2-drawer lateral files
- 96"W Hutch unit with hinged doors, tackboard and tasklight
- 30"W x 72"H Storage unit with box/box/file, hinged door and wardrobe, includes coat bar and pencil tray
- Desktop power module- clamp mount
- Sapper dual monitor arm- clamp mount
- Sparrow desk lamp

## Zone 1 Quantity

0

## Zone 2 Quantity

3

## Zone 3 Quantity

1

**TOTAL QUANTITY:** 4

MVS Space Utilization

St. Louis, MO

# DATA SHEET

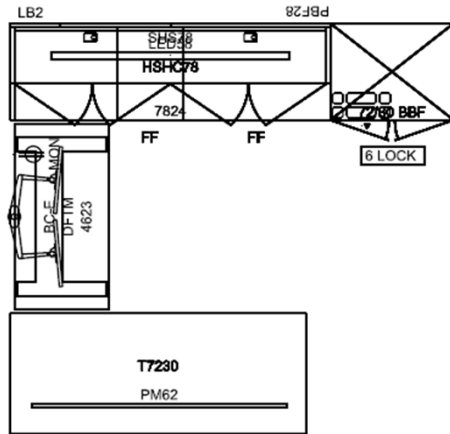
**ITEM NAME:** Freestanding U-Shaped Desk, Branch

**ITEM CODE:** D2

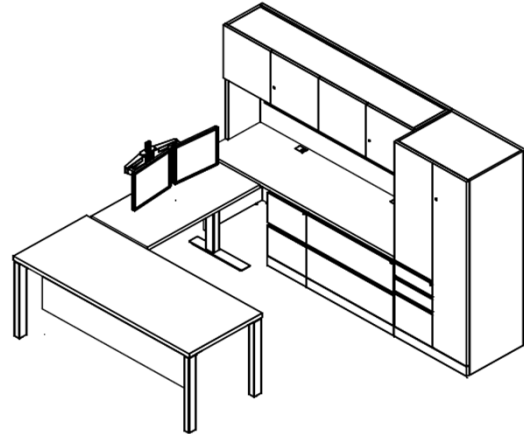
**MANUFACTURER:** Knoll

**PRODUCT NAME:** Reff Profiles

**PRODUCT #:** Varies



Plan



Isometric

**DIMENSIONS:** 9' x 8' 6" overall desk dimension

**FINISH:** Plastic Laminate: Grey Ash 142; Pulls: Chrome

**UPHOLSTERY:** Tackboard: Circuit W1754/2, Color: Frequecy

## DESCRIPTION:

- 72" x 30" Table desk with half height modesty panel
- 42" x 24" Tone extended range adjustable height table
- 78" x 24" credenza (1) 30"W 2-drawer lateral file and (1) file/file pedestal
- 78"W Hutch unit with hinged doors, tackboard and tasklight
- 30"W x 72"H Storage unit with box/box/file, hinged door and wardrobe, includes coat bar and pencil tray
- Desktop power module- clamp mount
- Sapper dual monitor arm- clamp mount
- Sparrow desk lamp

## Zone 1 Quantity

In Panels- 4

In Hardwalls- 3

## Zone 2 Quantity

In Panels- 1

In Hardwalls- 3

## Zone 3 Quantity

In Panels- 4

In Hardwalls- 3

**TOTAL QUANTITY:** 18

MVS Space Utilization

St. Louis, MO

# DATA SHEET

**ITEM NAME:** Ex Side Table

**ITEM CODE:** E7

**MANUFACTURER:** Keilhauer

**PRODUCT NAME:** Branden

**PRODUCT #:** 2141G



**DIMENSIONS:** 23 1/2"w x 23 1/2"d x 20"h

**FINISH:** Frame & Legs: Chrome; Top: Glass

**UPHOLSTERY:** N/A

**DESCRIPTION:** Provide executive side table with:

- steel base, zinc glides
- 3/4" tempered glass top
- ten year warranty

**Zone 1 Quantity**

0

**Zone 2 Quantity**

3

**Zone 3 Quantity**

0

**TOTAL QUANTITY:** 3

# DATA SHEET

**ITEM NAME:** Ex Reception Chair

**ITEM CODE:** E24

**MANUFACTURER:** Keilhauer

**PRODUCT NAME:** Branden

**PRODUCT #:** 2121



**DIMENSIONS:** 36"w x 34"d x 31"h; Seat Height: 17" h; Arm Height: 25 1/2"h

**FINISH:** Legs: Chrome

**UPHOLSTERY:** Keilhauer: Selva SE 22360 (Leather), Color Sunset

**DESCRIPTION:** Provide executive reception chair with:

-fully upholstered seat and back

-steel legs

-ten year warranty to be free from defects in material and workmanship, one year for textile

**Zone 1 Quantity**

0

**Zone 2 Quantity**

8

**Zone 3 Quantity**

2

**TOTAL QUANTITY:** 10

# DATA SHEET

**ITEM NAME:** Lateral File, 3 Drawer w/ Top

**ITEM CODE:** F1

**MANUFACTURER:** Knoll

**PRODUCT NAME:** Calibre

**PRODUCT #:** C2F3936CCCC, CE3618,  
KSPEC1 and 5Z6C2NM



Note: File will have a plastic laminate top.

**DIMENSIONS:** Lateral File: 36"w x 18"d x 39"h; Worksurface Top: 36"w x 18"d x 1 1/4"h; Overall Height: 40 1/4"

**FINISH:** Paint: Smooth Folkstone Grey, 114; Plastic Laminate Top: Light Ash; Edge Band: Light Ash

**UPHOLSTERY:** N/A

**DESCRIPTION:** Provide lateral file with:

- three 12" filing drawers
- hanging rails for filing side to side and front to back, and are adjustable for letter and legal files (included)
- provide counterweight as required
- plastic laminate worksurface top
- lockable file drawers

**Zone 1 Quantity**

0

**Zone 2 Quantity**

1

**Zone 3 Quantity**

0

**TOTAL QUANTITY:** 1



# DATA SHEET

**ITEM NAME:** Lateral File, 5 Drawer

**ITEM CODE:** F2

**MANUFACTURER:** Knoll

**PRODUCT NAME:** Calibre

**PRODUCT #:** C2F6336CZCCCC, KSPEC1



**DIMENSIONS:** 36"w x 18"d x 63"h

**FINISH:** Paint: Smooth Folkstone Grey, 114

**UPHOLSTERY:** N/A

**DESCRIPTION:** Provide lateral file with:

- five 12" filing drawers
- hanging rails for filing side to side and front to back, and are adjustable for letter and legal files (included)
- provide counterweight as required
- lockable file drawers

**Zone 1 Quantity**

44

**Zone 2 Quantity**

31

**Zone 3 Quantity**

36

**TOTAL QUANTITY:** 111

MVS Space Utilization

St. Louis, MO

# DATA SHEET

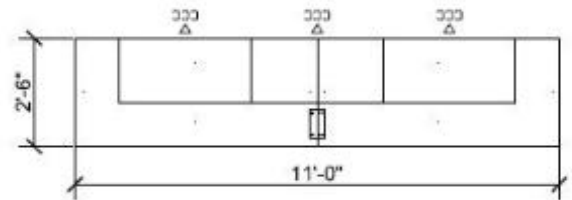
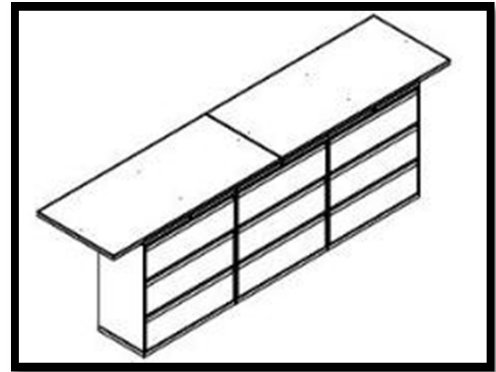
**ITEM NAME:** Lateral File, 3 Drawer - Group of 3 w/ Top

**ITEM CODE:** F4

**MANUFACTURER:** Knoll

**PRODUCT NAME:** Calibre

**PRODUCT #:** (3) C2F3936CCCC and (2) YT6630L



**DIMENSIONS:** Lateral File: 36"w x 18"d x 39"h; Each Worksurface Top: 66"w x 30"d x 1 1/4"h; Overall Size: 132"w x 30"d x 40 1/4"h

**FINISH:** Paint: Smooth Folkstone Grey, T114; Plastic Laminate Top: Light Ash; Edge Band: Light Ash

**UPHOLSTERY:** N/A

**DESCRIPTION:** Provide a group of 3 lateral files with worksurface top with:

- lateral file cabinets with three 12" filing drawers each
- file drawers to have hanging rails for filing side to side and front to back, and be adjustable for letter and legal files
- provide counterweights as required
- lockable file drawers
- plastic laminate worksurface top
- components to be installed per the plan drawing shown on this sheet
- worksurface top to be installed in accordance with manufacturer's installation instructions and recommended components for a structurally sound installation

**Zone 1 Quantity**

1

**Zone 2 Quantity**

0

**Zone 3 Quantity**

0

**TOTAL QUANTITY:** 1

# DATA SHEET

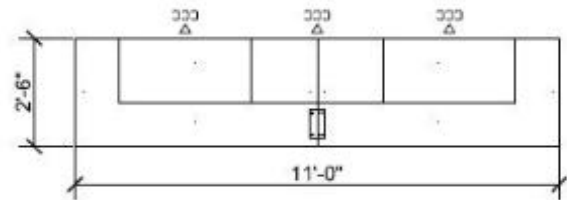
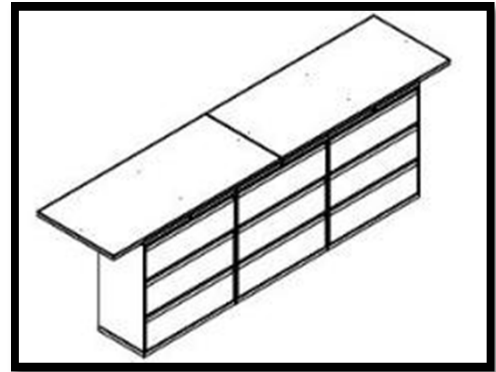
**ITEM NAME:** Lateral File, 3 Drawer - Group of 3 w/ Top

**ITEM CODE:** F4a

**MANUFACTURER:** Knoll

**PRODUCT NAME:** Calibre

**PRODUCT #:** (3) C2F2736CCCC and (2) YT6630L



**DIMENSIONS:** Lateral File: 36"w x 18"d x 28"h; Each Worksurface Top: 66"w x 30"d x 1 1/4"h; Overall Size: 132"w x 30"d x 29"h

**FINISH:** Paint: Smooth Folkstone Grey, 114; Plastic Laminate Top: Light Ash; Edge Band: Light Ash

**UPHOLSTERY:** N/A

**DESCRIPTION:** Provide a group of 3 lateral files with worksurface top with:

- lateral file cabinets with three 12" filing drawers each
- file drawers to have hanging rails for filing side to side and front to back, and be adjustable for letter and legal files
- provide counterweights as required
- lockable file drawers
- plastic laminate worksurface top
- components to be installed per the plan drawing shown on this sheet
- worksurface top to be installed in accordance with manufacturer's installation instructions and recommended components for a structurally sound installation

**Zone 1 Quantity**

1

**Zone 2 Quantity**

0

**Zone 3 Quantity**

0

**TOTAL QUANTITY:** 1

# DATA SHEET

**ITEM NAME:** Storage Cabinet, 39"h w/ Top

**ITEM CODE:** F6

**MANUFACTURER:** Knoll

**PRODUCT NAME:** Calibre with Morrison/Calibre Style Top

**PRODUCT #:** C2C3936C, CE3618 and  
KSPEC1



Note: Cabinet will have a plastic laminate top. Size varies from illustration.

**DIMENSIONS:** Storage Cabinet: 36"w x 18"d x 39"h; Worksurface Top: 36"w x 18"d x 1 1/4"h

**FINISH:** Paint: Smooth Folkstone Grey, 114; Plastic Laminate Top: Light Ash; Edge Band: Light Ash

**UPHOLSTERY:** N/A

**DESCRIPTION:** Provide storage cabinet with:

- one adjustable shelf; color to match case color
- lockable double doors
- provide counterweight as required
- plastic laminate worksurface top

**Zone 1 Quantity**

5

**Zone 2 Quantity**

8

**Zone 3 Quantity**

14

**TOTAL QUANTITY:** 27

# DATA SHEET

**ITEM NAME:** Storage Cabinet, 63"h

**ITEM CODE:** F7

**MANUFACTURER:** Knoll

**PRODUCT NAME:** Calibre

**PRODUCT #:** C2C6336C and KSPEC1



Note: Cabinet size varies from illustration.

**DIMENSIONS:** Storage Cabinet: 36"w x 18"d x 63"h

**FINISH:** Paint: Smooth Folkstone Grey, 114

**UPHOLSTERY:** N/A

**DESCRIPTION:** Provide storage cabinet with:  
-three adjustable shelves; color to match case color  
-lockable double doors

**Zone 1 Quantity**

7

**Zone 2 Quantity**

7

**Zone 3 Quantity**

14

**TOTAL QUANTITY:** 28

# DATA SHEET

**ITEM NAME:** Bookcase

**ITEM CODE:** F8

**MANUFACTURER:** Knoll

**PRODUCT NAME:** Calibre

**PRODUCT #:** C4B7136SS



Note: Bookcase size varies from illustration and has 4 adjustable shelves.

**DIMENSIONS:** 36"w x 14 7/8"d x 70 3/4"h

**FINISH:** Paint: Smooth Folkstone Grey, 114

**UPHOLSTERY:** N/A

**DESCRIPTION:** Provide bookcase with:  
-four adjustable shelves

**Zone 1 Quantity**

2

**Zone 2 Quantity**

0

**Zone 3 Quantity**

4

**TOTAL QUANTITY:** 6

# DATA SHEET

**ITEM NAME:** Open Shelving

**ITEM CODE:** F9

**MANUFACTURER:** Knoll

**PRODUCT NAME:** Calibre

**PRODUCT #:** C2C6336



Note: Open shelving size varies from illustration and has 3 adjustable shelves.

**DIMENSIONS:** 36"w x 18"d x 63"h

**FINISH:** Paint: Smooth Folkstone Grey, 114

**UPHOLSTERY:** N/A

**DESCRIPTION:** Provide open shelving with:  
-three adjustable shelves; color to match case color  
-provide counterweight where required

**Zone 1 Quantity**

0

**Zone 2 Quantity**

0

**Zone 3 Quantity**

9

**TOTAL QUANTITY:** 9

# DATA SHEET

**ITEM NAME:** Map Flats w/ Top

**ITEM CODE:** F30

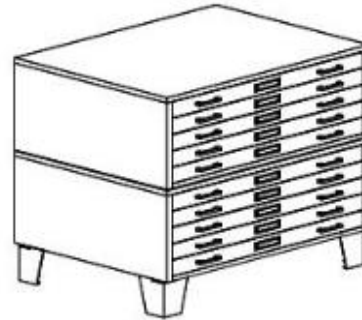
**MANUFACTURER:** Mayline

**PRODUCT NAME:** Interlocking Plan Files

**PRODUCT #:** 7768 - Five Drawer Units (Quan 2)  
7890X - Sanitary Base Legs, Set of 4  
7768U - Steel Cap  
7768U02 - Laminate Top



See configuration below.



**DIMENSIONS:** 47"w x 35 3/8"d x 38 3/4"h

**FINISH:** Metal: Mist; Plastic Laminate: Formica, Light Ash 8843-NG; Edging: Light Brown; Pulls: Chrome

**UPHOLSTERY:** N/A

**DESCRIPTION:** Provide map file with:  
-two 5 drawer files for 30" x 42" sheets  
-front plan depressor to keep sheets flat  
-6" high sanitary base legs  
-steel cap and high pressure laminate top with edging  
-limited lifetime warranty

**Zone 1 Quantity**

2

**Zone 2 Quantity**

0

**Zone 3 Quantity**

10

**TOTAL QUANTITY:** 12



# DATA SHEET

**ITEM NAME:** Library Shelving

**ITEM CODE:** F40

**MANUFACTURER:** Borroughs or Equal Manufacturer  
on GSA Schedule

**PRODUCT NAME:** Wilsonstak

**PRODUCT #:** See quote for components



**DIMENSIONS:** 36"w x 24"d x 78"h

**FINISH:** Powder Coat Finish: 161 Mist Gray

**UPHOLSTERY:** N/A

**DESCRIPTION:** Provide library shelving with:

- Double face shelving (reference drawing and parts list for location of single and double shelving)
- 5 adjustable shelves per unit
- Frames made of 16 gauge welded steel
- Shelves made of 18 gauge steel with front and back triple bends to prevent sagging
- Base shelves are made of one piece, ensuring stable, free-standing installations
- Wilsonstak shelving surpasses all American Library Association strength and durability standards
- Five year limited warranty against manufacturing defects in material and workmanship

**Zone 1 Quantity**

0

**Zone 2 Quantity**

12

**Zone 3 Quantity**

0

**TOTAL QUANTITY:** 12