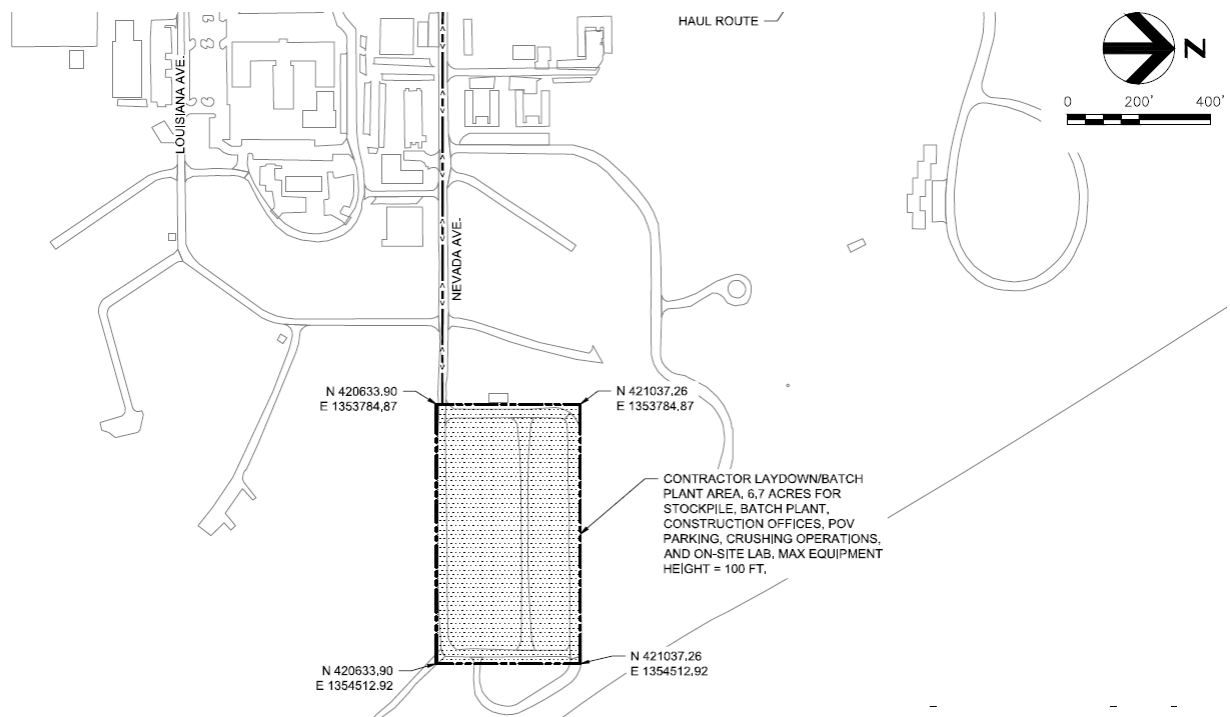
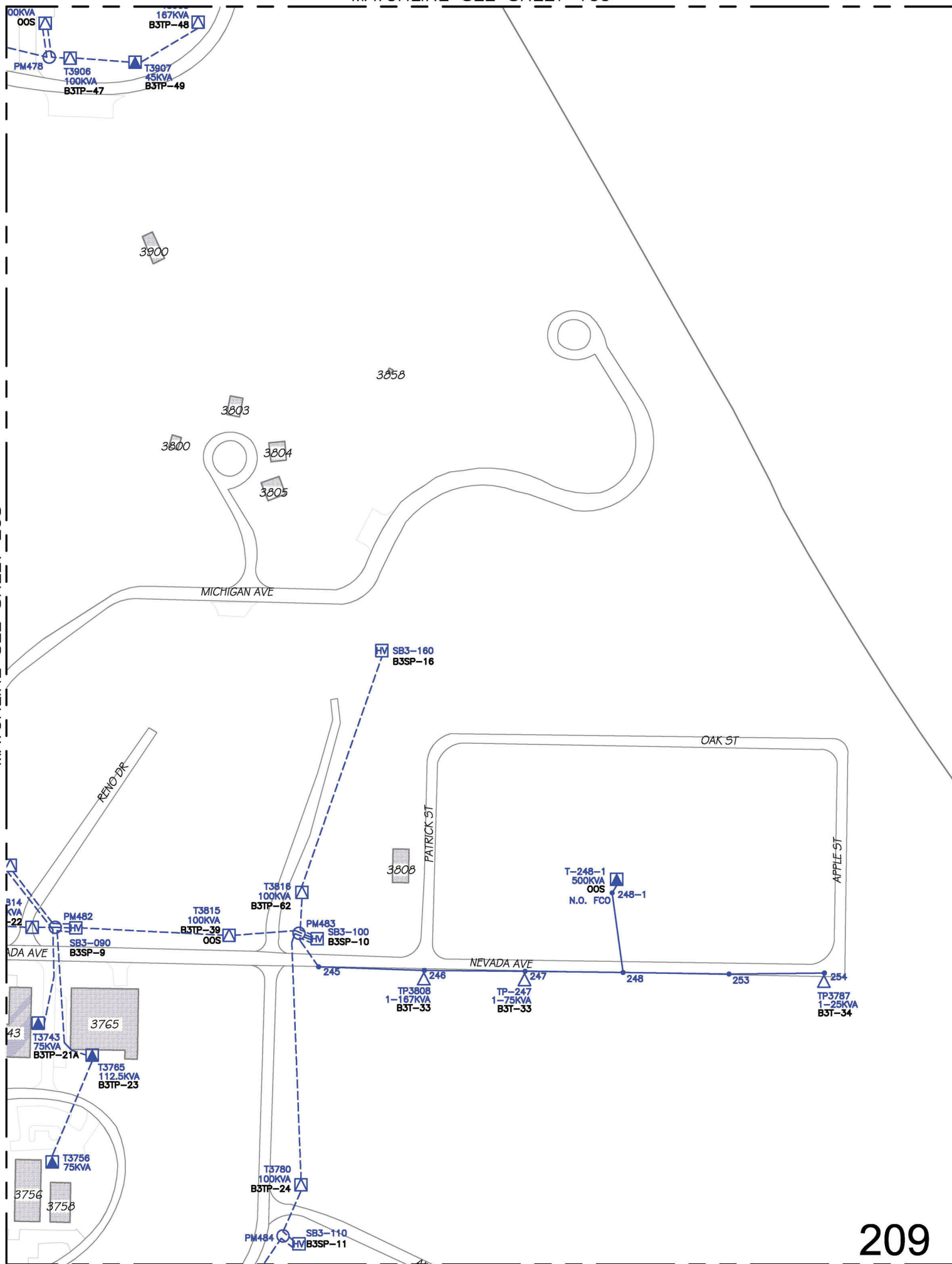


### Additional Information on the batch plant site:

Batch Plant Site area is approximately 6.7 Acres. Should be used for StockPile, Batch Plant, POV Parking, Construction offices, Crushing Operations, and On-site Lab. Max Equipment Height = 100 ft.

THE NEVADA AVENUE SITE PROVIDES ACCESS TO WASTEWATER, ELECTRICAL, NATURAL GAS, AND WATER UTILITIES. THE CONTRACTOR SHALL MAKE ARRANGEMENTS FOR TEMPORARY UTILITY HOOK UPS THROUGH LOCAL SUPPLIERS AS REQUIRED. THE LOCATION(S) OF TEMPORARY CONNECTION POINTS WILL BE DESIGNATED BY THE COR PRIOR TO PERMITTING CONNECTIONS. A WATER CONNECTION OF SUFFICIENT SIZE FOR PCC BATCH PLANT OPERATION IS REQUIRED.





### **Electrical Utility connection at the Batch Plant**

The drawing is an electrical drawing for the Nevada Ave area. On the drawing, T-248-1 is a pad mounted 500KVA 480/277V transformer that has been used in the past to power a batch plant and will be available for that purpose. The current batch plant is fed from a larger sized transformer that is tapped off the primary (13.2KV) of T-248-1.

The picture below shows the power disconnects that should be available for office trailers. These disconnects feed from transformer TP3808 located on pole 246 across the street and currently feed the existing trailers.

