

FABRIC FOR PANELS AND TACKBOARDS GRADE A
LAMINATE: WORKSURFACES & PANELS GRADE B
WOOD GRADE B

ALL DIMENSIONS AND
FIELD MEASUREMENTS
ARE SUBJECT TO
VERIFICATION BY THE
WINNING CONTRACTOR.

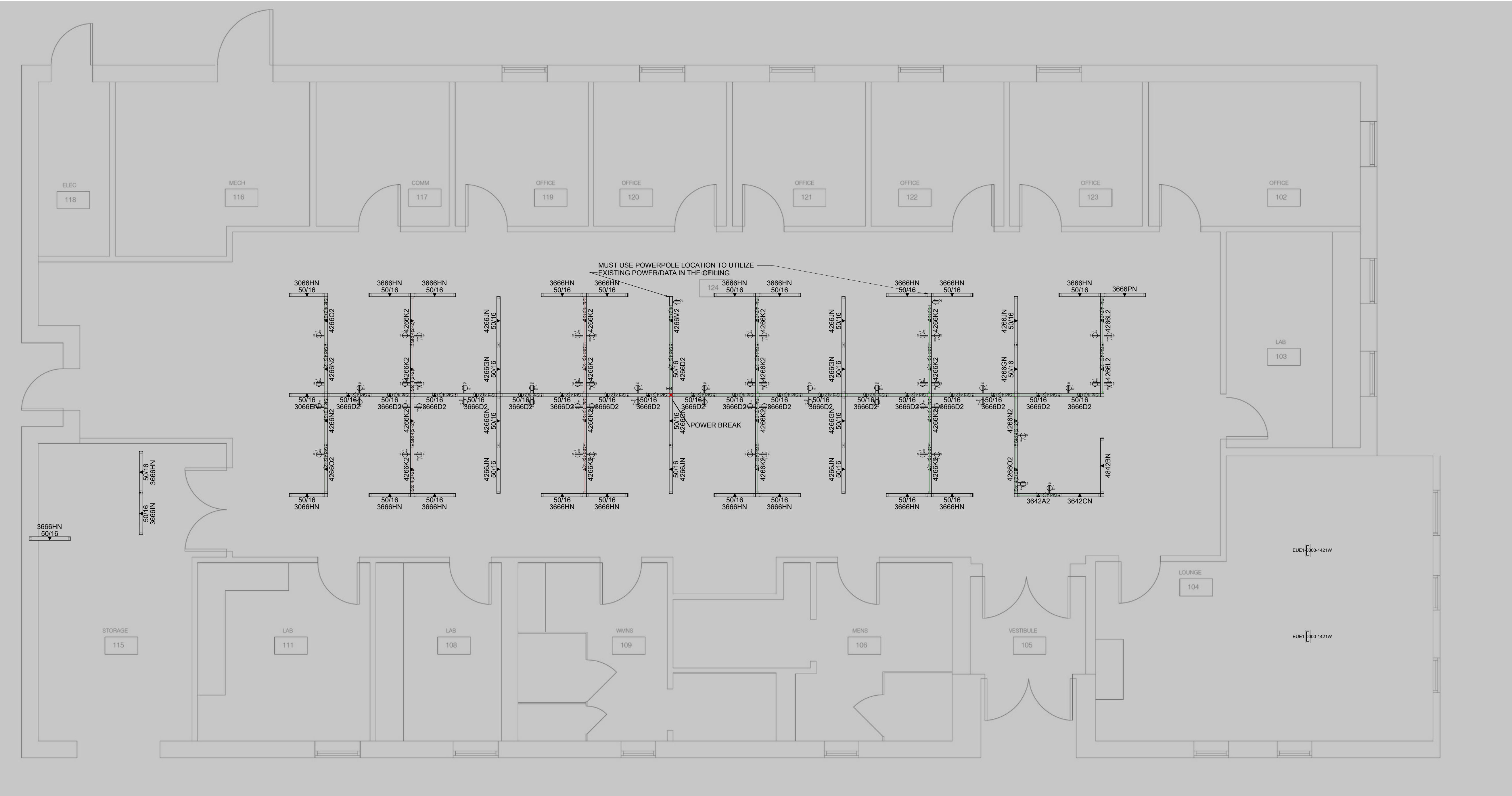
APPROVED
DATE: _____
BY: _____

NELLIS AIR FORCE BASE
BUILDING 60
PRELIM FURNITURE LAYOUT
NELLIS AFB

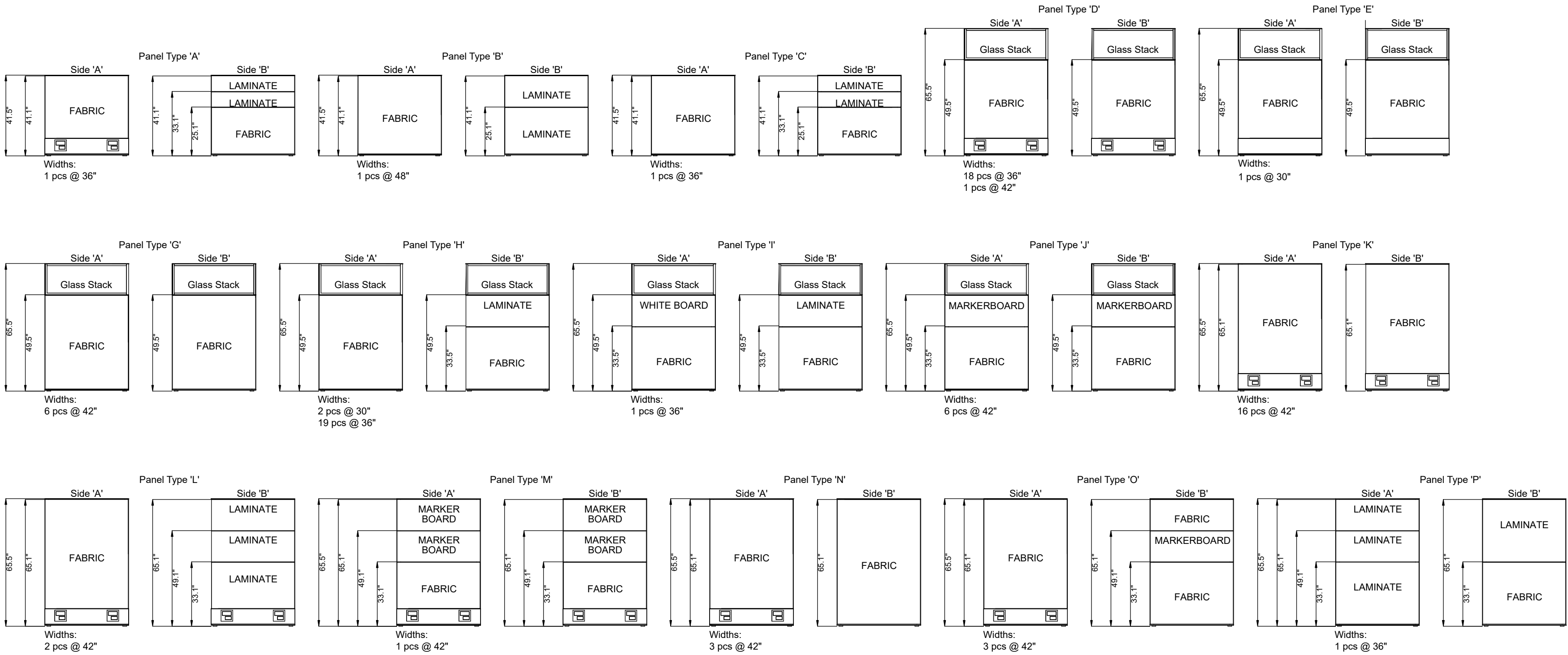
REVISIONS

DATE BY

DATE: 8/26/22
SCALE: 1/4" = 1'-0"
JOB NO:
DRAWN BY:
CHECKED BY:



CODED PANEL PLAN



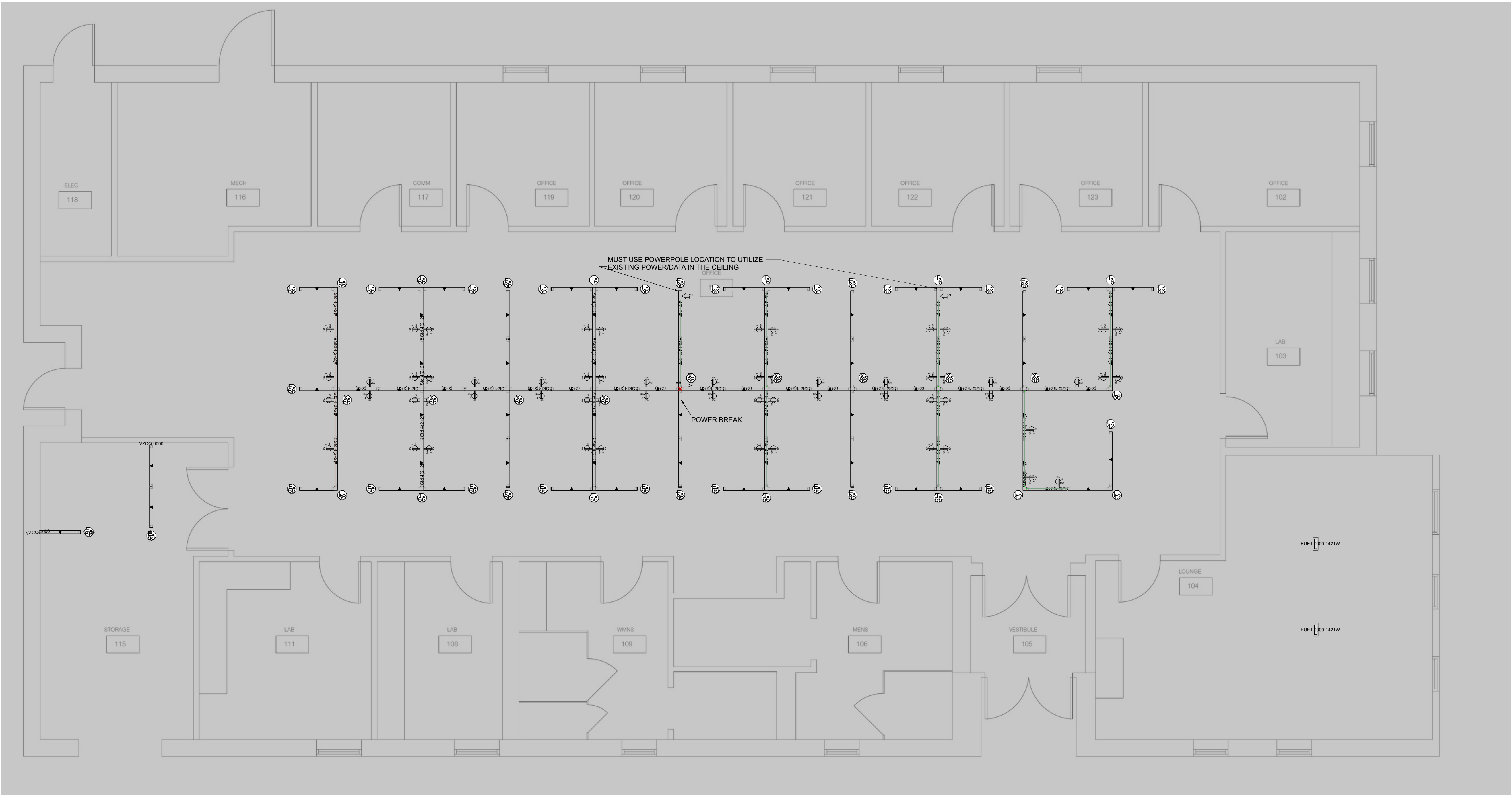
NELLIS AIR FORCE BASE
BUILDING 60
PRELIM FURNITURE LAYOUT
NELLIS AFB

ALL DIMENSIONS AND
FIELD MEASUREMENTS
ARE SUBJECT TO
VERIFICATION BY THE
WINNING CONTRACTOR.

APPROVED
DATE:
BY:

REVISIONS

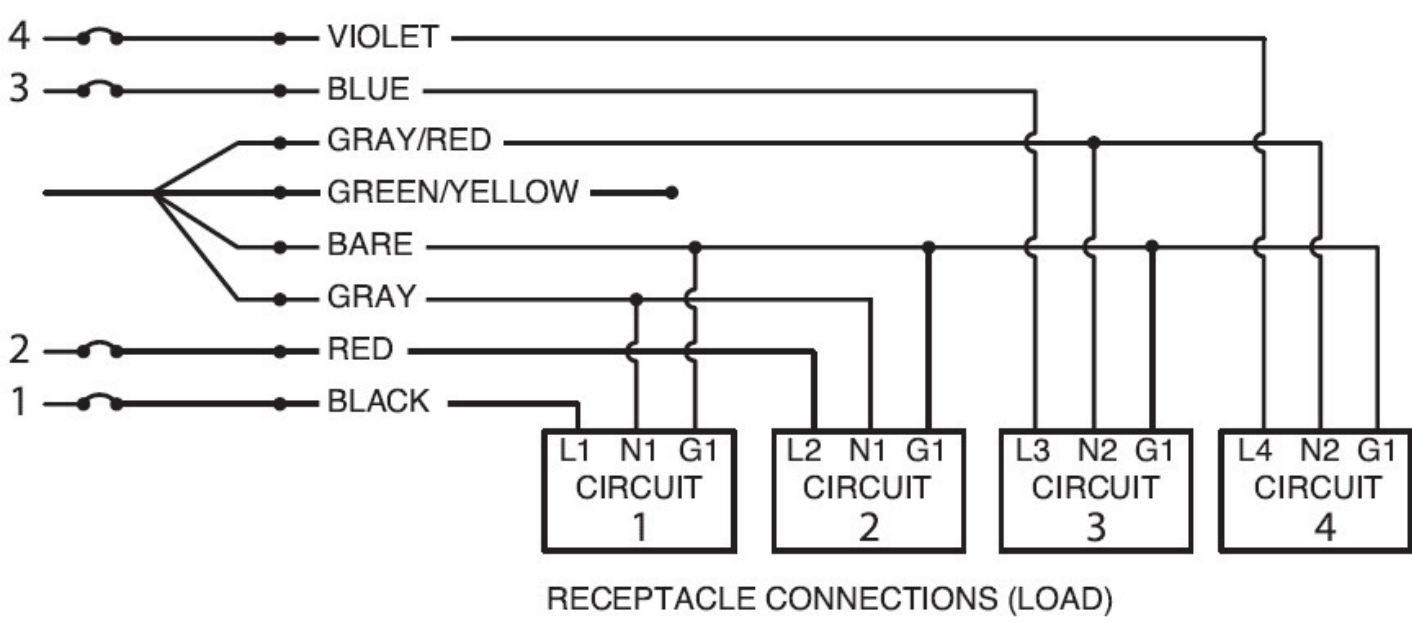
DATE	BY
8-26-22	
JOB NO:	1:4" = 1'-0"
DRAWN BY:	
CHECKED BY:	



ELECTRIC DRAWING

4-Circuit Wiring Diagram:

2+2 Configuration
CONNECTIONS TO A GROUNDED THREE-PHASE SYSTEM
RATING: 208Y/120V. 3-PH WYE
60Hz, 20 AMP (CSA 15 AMP)
WHITE RATED AT 35 AMP (CSA 26 AMP)
MULTIWIRE BRANCH CIRCUIT
CIRCUIT 1 & 2 SHARE NEUTRAL 1
CIRCUIT 3 & 4 SHARE NEUTRAL 2



NELLIS AIR FORCE BASE
BUILDING 60
PRELIM FURNITURE LAYOUT
NELLIS AFB

ALL DIMENSIONS AND
FIELD MEASUREMENTS
ARE SUBJECT TO
VERIFICATION BY THE
WINNING CONTRACTOR.

APPROVED
DATE:
BY:

REVISIONS

DATE BY

DATE: 8-26-22
SCALE: 1/4" = 1'-0"
JOB NO:
DRAWN BY:
CHECKED BY:



FLOORPLAN WITH GLASS STACK (FRAMED)

1/2" = 1'

ALL DIMENSIONS AND
FIELD MEASUREMENTS
ARE SUBJECT TO
VERIFICATION BY THE
WINNING CONTRACTOR.

APPROVED
DATE: _____
BY: _____

NELLIS AIR FORCE BASE
BUILDING 60
FURNITURE LAYOUT
NELLIS AFB

REVISIONS

DATE BY

1
2
3
4
5
6
7
8
9
10
11
12
13
14
15
16
17
18
19
20
21
22
23
24
25
26
27
28
29
30
31
32
33
34
35
36
37
38
39
40
41
42
43
44
45
46
47
48
49
50
51
52
53
54
55
56
57
58
59
60
61
62
63
64
65
66
67
68
69
70
71
72
73
74
75
76
77
78
79
80
81
82
83
84
85
86
87
88
89
90
91
92
93
94
95
96
97
98
99
100

DATE: 8-26-22
SCALE: 1/4" = 1'-0"
JOB NO:
DRAWN BY: LAJ
CHECKED BY: