

A

B

C

D

E

F

6/22/2021 1:20:10 PM

C:\Users\schmismant\Documents\19-0502\_Green Homes v17\_schmismant\MNFX1.rvt

ROOF PLAN GENERAL NOTES

- A.

ROOFING SUPPLIERS, MANUFACTURERS, & INSTALLERS SHALL REVIEW ALL ROOFING DETAILS & ADVISE THE ARCHITECT ON ANY RECOMMENDED CHANGES.
- B.

UNLESS NOTIFIED OTHERWISE, ROOFING SUPPLIERS, MANUFACTURERS AND INSTALLERS WILL BE ASSUMED TO HAVE REVIEWED AND APPROVED THE DETAILS SHOWN.
- C.

PROVIDE FLASHING AND SEALANT PER ROOFING MANUFACTURER RECOMMENDATION AT ALL CONDUIT & HVAC LINES PENETRATING THE ROOF.
- D.

CONTRACTOR & ALL SUBTRADES SHALL BE AWARE & EXERCISE THE NECESSARY CARE TO PREVENT DAMAGE TO OR PUNCTURE OF THE ROOF. THIS SHALL INCLUDE ALL MATERIALS, TOOLS, DELETERIOUS MATERIALS.
- E.

REFERENCE STRUCTURAL, MECHANICAL, PLUMBING, FIRE PROTECTION AND ELECTRICAL FOR ITEMS. COORDINATE AS REQUIRED INCLUDING NECESSARY FRAMING, BLOCKING, ETC.
- F.

FOR TYPICAL FLASHING DETAIL AT EXHAUST FAN: SEE MECHANICAL DRAWINGS FOR MORE INFORMATION.

ROOF PLAN NOTES

1.

ASPHALT SHINGLE ROOF SYSTEM
2.

PAINTED FIBER CEMENT FASCIA BOARD (TYP)
3.

PRE-FIN GUTTER
4.

RIDGE VENT - REFER TO DETAIL 5/AE105
5.

LOW SLOPE EPDM ROOF 1"-1'-0"
6.

ROOF DRAIN - REFER TO DETAIL 3/AE105
7.

ROOF ACCESS HATCH (30"x54") - REFER TO DETAIL 6/AE105
8.

PERGOLA-TYPE ROOF - REFER TO DETAILS 3/AE502 AND 4/AE502
9.

LOCATION OF ATTIC DRAFTSTOP, 7/16" OSB OR CODE APPROVED MATERIALS. SEE DETAIL 6/AE314.
10.

POWERED ROOF VENT - REFER TO DETAIL 4/AE105

BID DEDUCT ALTERNATES

- ALTERNATE DEDUCT #1:

REDUCE LANDSCAPING PLANTINGS AND MATERIALS, REFER TO CHANGES DETAILED ON SHEET LP104.
- ALTERNATE DEDUCT #2:

REMOVE THE ROUNDABOUT FROM THE SITE ACCESS ROADWAY.
- ALTERNATE DEDUCT #3:

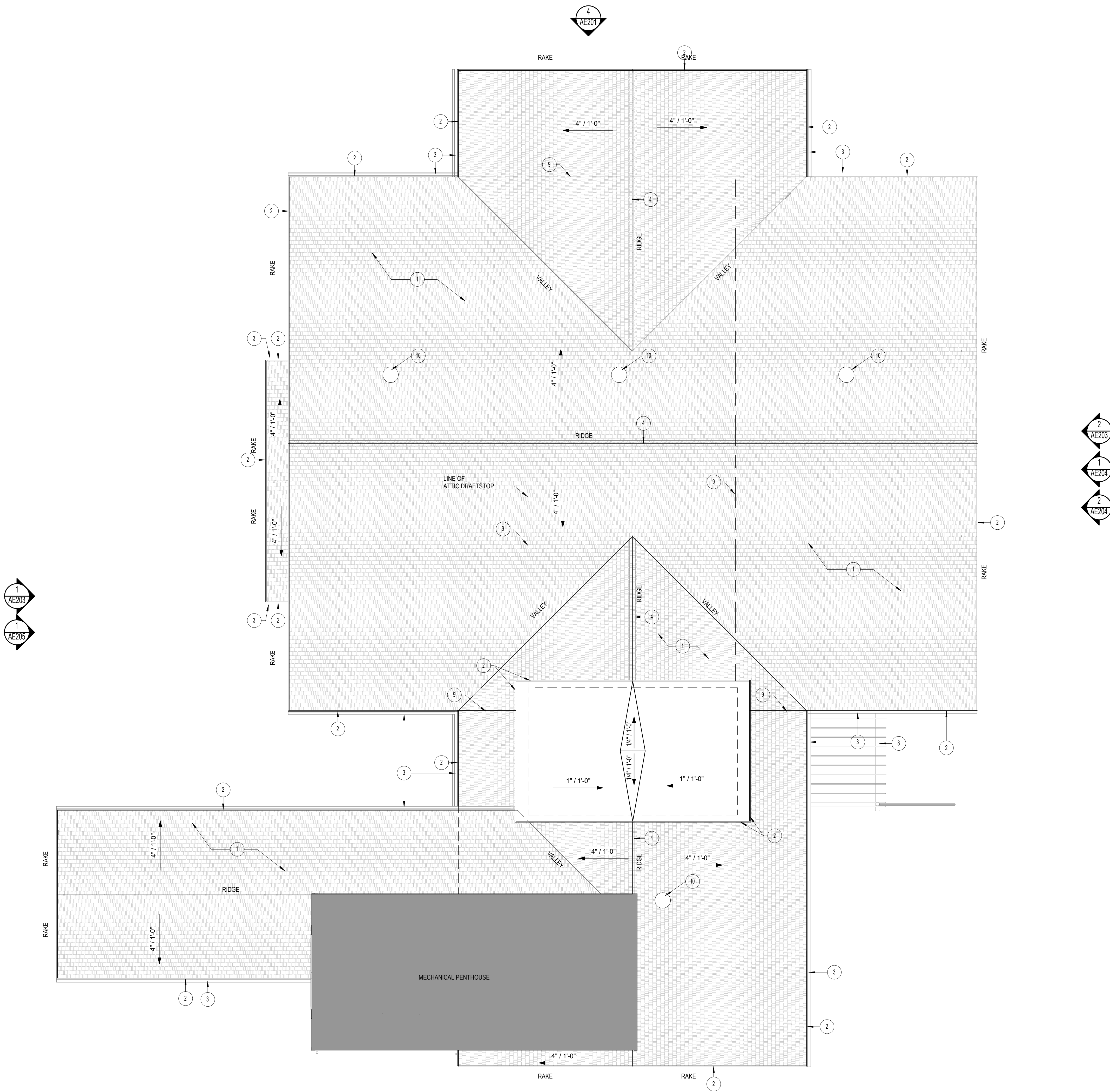
REMOVE THE BACK CANOPY FROM THE GARDEN PATIO.
- ALTERNATE DEDUCT #4:

REMOVE THE CLERESTORY FROM THE ROOF PROFILE.
- ALTERNATE DEDUCT #5:

FURTHER REDUCE LANDSCAPING PLANTINGS AND MATERIALS, REFER TO CHANGES DETAILED ON SHEET LP105.
- ALTERNATE DEDUCT #6:

REMOVE EMPTY POWER DUCT BANK FROM TRANSFORMER TO HANDHOLE HANDHOLE NORTH OF BUILDING 135. DO NOT INSTALL HANDHOLE.
- ALTERNATE DEDUCT #7:

REMOVE STREET LIGHTING.



1 ROOF PLAN - DEDUCT #3  
1/AE105 SCALE: 1/8" = 1'-0"

<div>Revisions:</div>	<div>CONSULTANT</div> <div>Consultant: CMTA 10411 Meeting Street Prospect, Kentucky 40059 502.326.3085</div>	<div>ARCHITECT/ENGINEER OF RECORD</div> <div>A/E: GUIDON DESIGN, INC. 1221 N. Pennsylvania Street Indianapolis, Indiana 46202 317.800.6388</div>	<div>STAMP</div> <div></div>	<div>Office of Construction and Facilities Management</div> <div>VA U.S. Department of Veterans Affairs</div>	<div>Drawing Title</div> <div>ROOF PLAN - ALTERNATE DEDUCT #3</div>	<div>Phase</div> <div>100% CONSTRUCTION DOCUMENTS</div>	<div>Project Title</div> <div>CONSTRUCT TWO NEW GREEN HOMES 7 &amp; 8</div>	<div>Project Number</div> <div>550-319</div>	
								<div>Building Number</div> <div>7 &amp; 8</div>	
							<div>FULLY SPRINKLERED</div>	<div>Location</div> <div>1900 E. MAIN ST., DANVILLE, IL 61832</div>	<div>Drawing Number</div> <div>AE106</div>
		<div>Date:</div>				<div>Approved:</div>		<div>Issue Date</div> <div>04/09/2020</div>	<div>Checked</div> <div>JF</div>

\*SHEET ONLY APPLIES IF ALTERNATE DEDUCT 3 IS APPROVED