

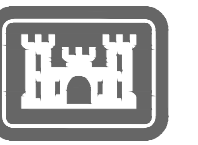
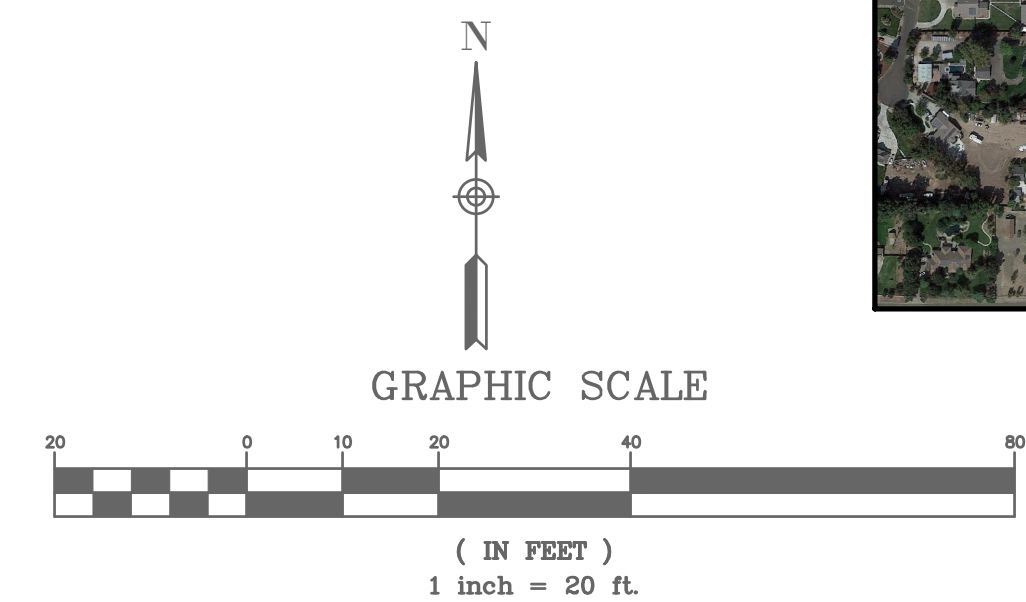


GENERAL NOTES:

1. FIELD VERIFY EXISTING CONDITIONS.
2. DEMOLISH ALL EQUIPMENT ON POLES.
3. REFER TO SHEET E-001 FOR LEGEND AND ABBREVIATIONS.
4. CHECK PHASE ROTATION BEFORE AND AFTER SWITCHING OH 12KV TO UNDERGROUND CABLE.
5. CLIN 4 OPTION: THIS OPTION SHALL INCLUDE THE WORK FROM POLE W/36 TO POLE W/41.
6. CLIN 5 OPTION: THIS OPTION SHALL INCLUDE THE WORK FROM POLE W/41 TO POLE W/47 AND TO POLE EW/2.

KEY NOTES:

1. REMOVE CONDUCTORS AND CONDUIT FROM EXISTING RISER (POLE W/41) TO EXISTING RISER (POLE W/42).
2. DEMOLISH SWITCH ON POLE W/41.

[illegible]

ISSUED DATE:	ISSUE DATE:
2022	2022
DRAWN BY:	DRAWN BY:
R. LEON	R. LEON
CHECKED BY:	CHECKED BY:
R. LEON	R. LEON
SUBMITTED BY:	SUBMITTED BY:
D. CARULLI	D. CARULLI
SPEC NO:	SPEC NO:
2410	2410
SIZE:	SIZE:
ANSI D	ANSI D
130-25-0933	130-25-0933

ARMY CORPS OF ENGINEERS
SACRAMENTO DISTRICT
1325 J STREET
SACRAMENTO, CA 95814

IN-HOUSE DESIGN
1325 J STREET
SACRAMENTO, CA 95814

DDJC TRACY, CA
12KV OVERHEAD TO UNDERGROUND POWER LINE REPLACEMENT
PN# 490571

SITE PLAN DEMO
STATION 32+00 TO 28+00
OPTION BID

SHEET ID

ED108

