

8 7 6 5 4 3 2 1

NOTES:

101. ALL DIMENSIONS ARE IN MILLIMETERS (mm) AND VALUES ARE IN SI UNITS. DIMENSIONS AND VALUES IN BRACKETS ARE U.S. CUSTOMARY UNITS (inch) CONVERTED FROM MILLIMETERS / SI UNITS.

107. INSPECTION / ACCEPTANCE TO BE MEASURED AND RECORDED IN SI UNITS.

109b. ESTIMATED WEIGHT IS 294.8 KG, (649.97 LBM)

901. DRAWING REPRESENTS MECHANICAL LIMITATIONS OF RIGHT YOKE ASSY. FINAL SPECIFICATIONS SATISFYING MAGNETIC AND ENGINEERING REQUIREMENTS, SPECIFIED IN SPECIFIED IN BTA DIPOLE COMMON MECHANICAL REQUIREMENTS DOCUMENT (AL-1462-7396) AND BTA DIPOLE MAGNET-SPECIFIC REQUIREMENTS DOCUMENT (AL-1471-4086), TO BE DETERMINED BY VENDOR.

902. FEATURES NOT EXPLICITLY SPECIFIED ARE SUBJECT TO VENDOR SPECIFICATION AND LBNL APPROVAL. HOLES NOT SPECIFIED ARE REFERENCE MOUNTING FEATURES FOR ITEMS CONTROLLED ONLY BY SPACECLAIMS.

903. WELD SIZES NOT SPECIFIED TO BE DETERMINED BY VENDOR.

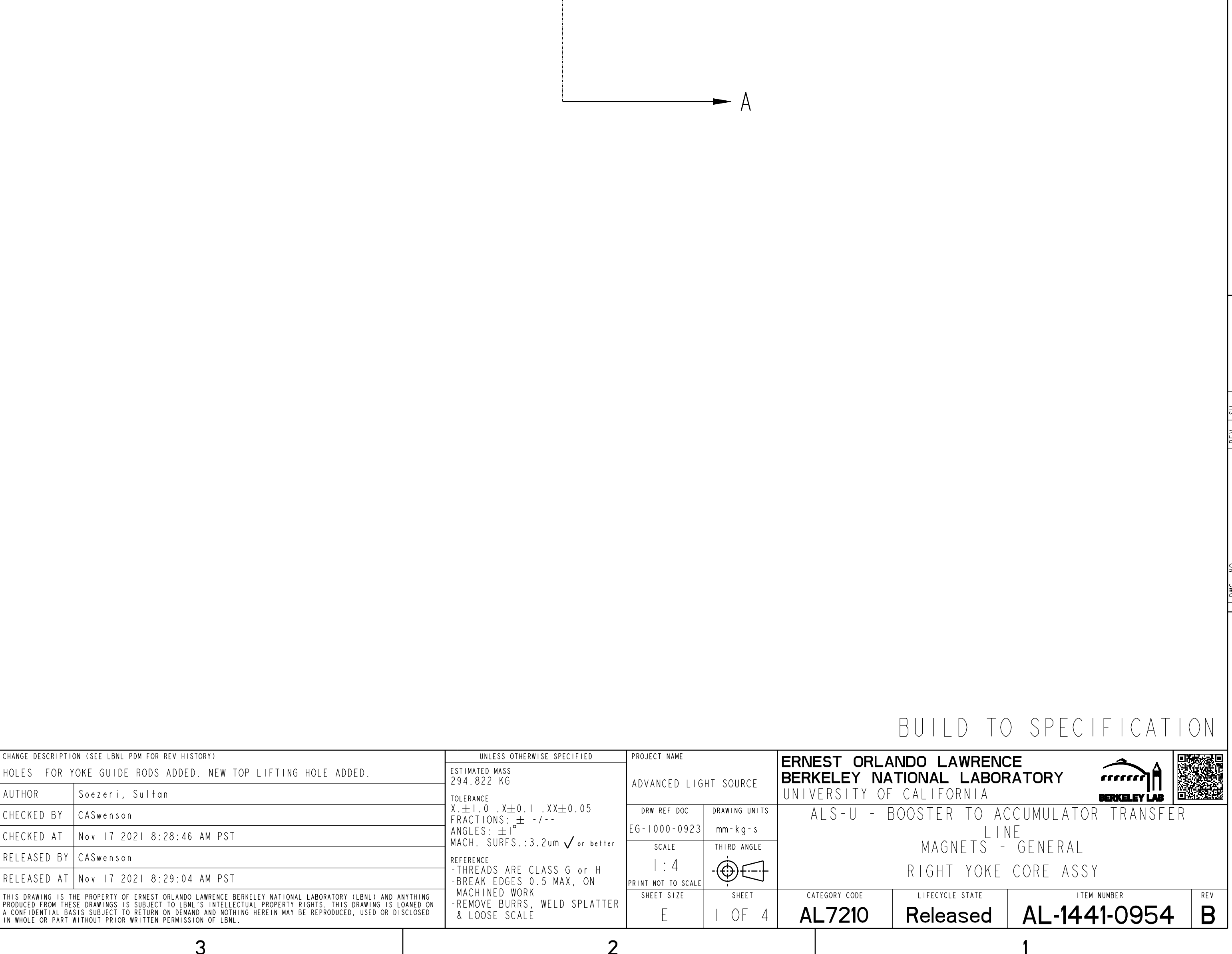
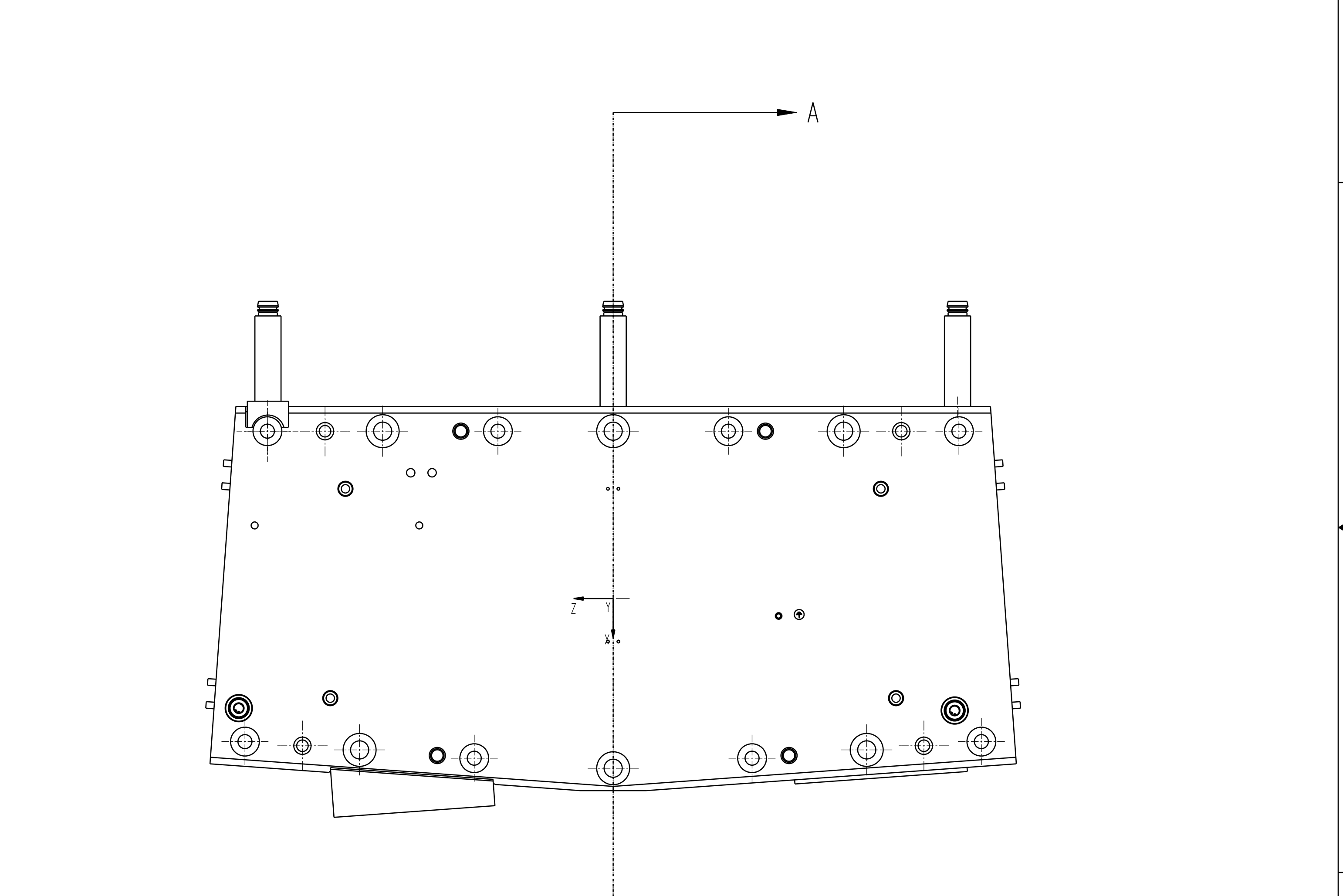
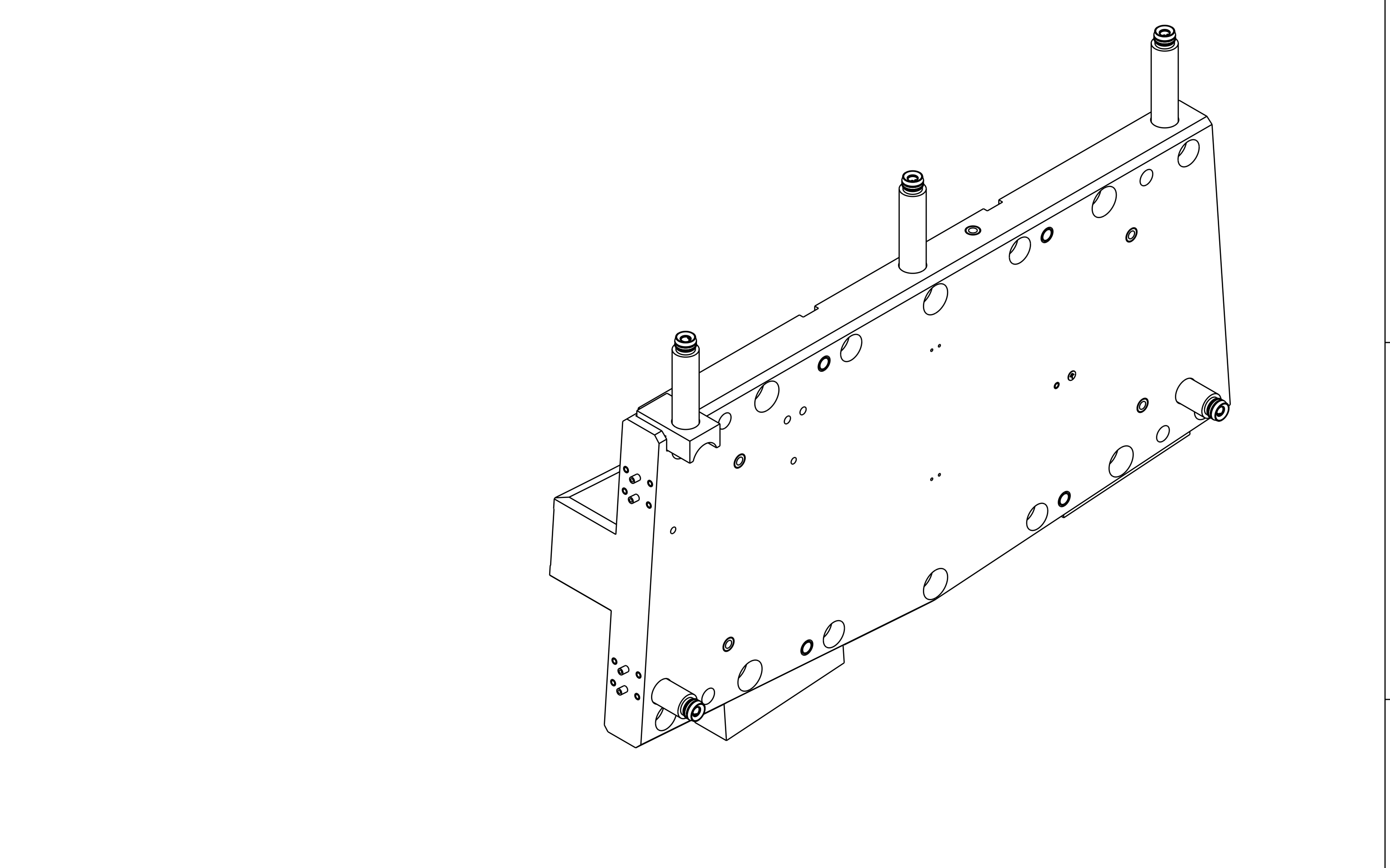
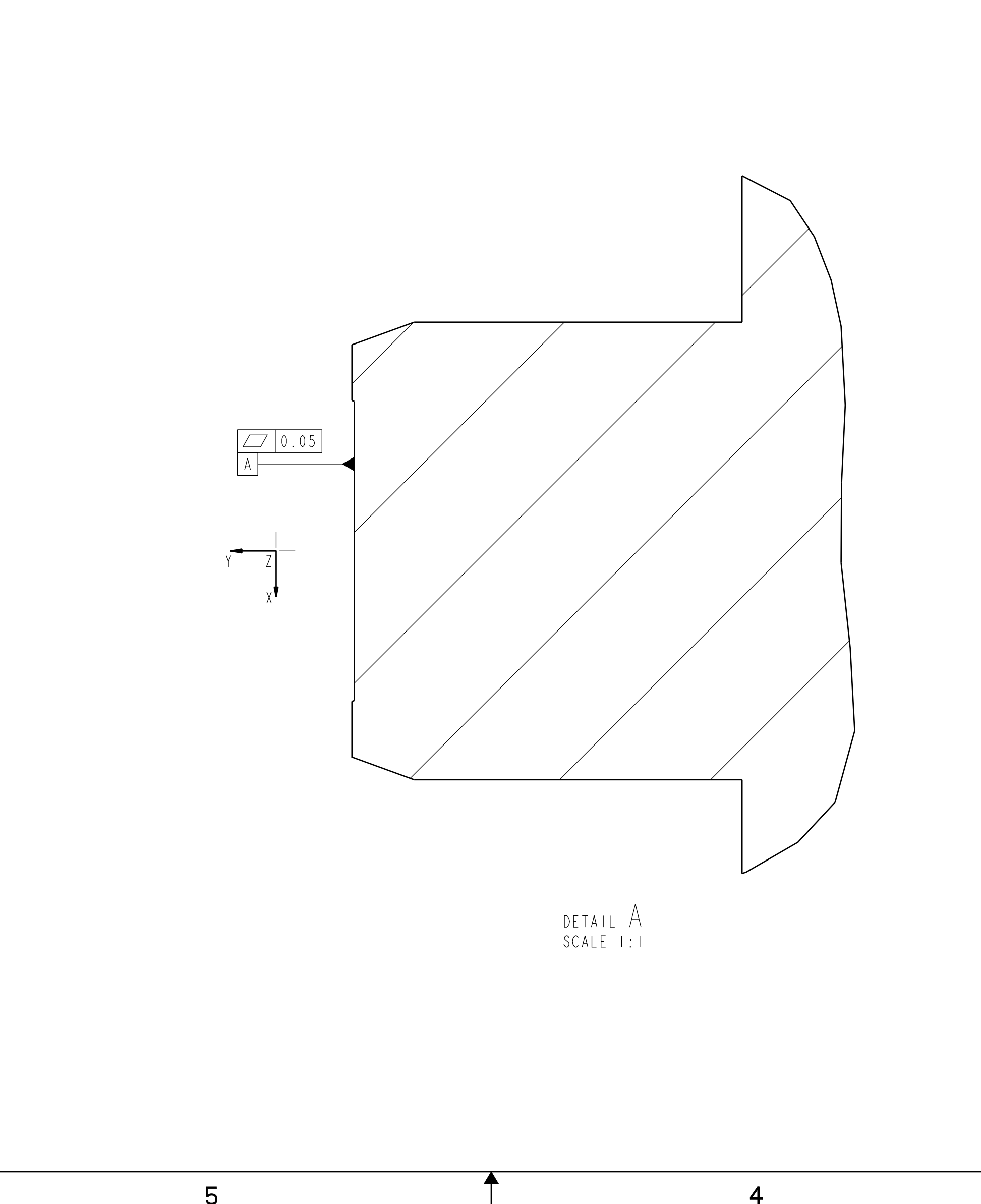
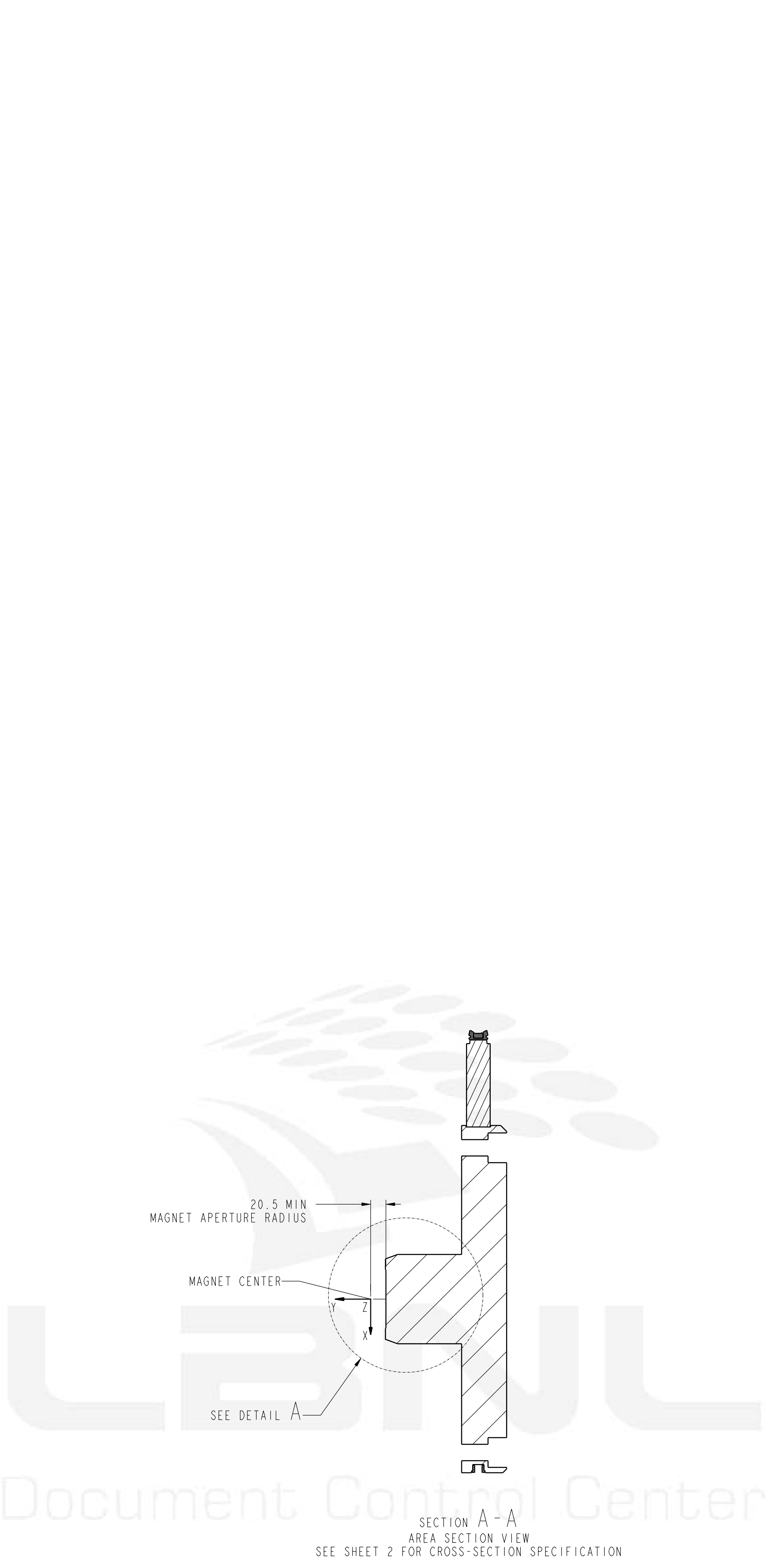
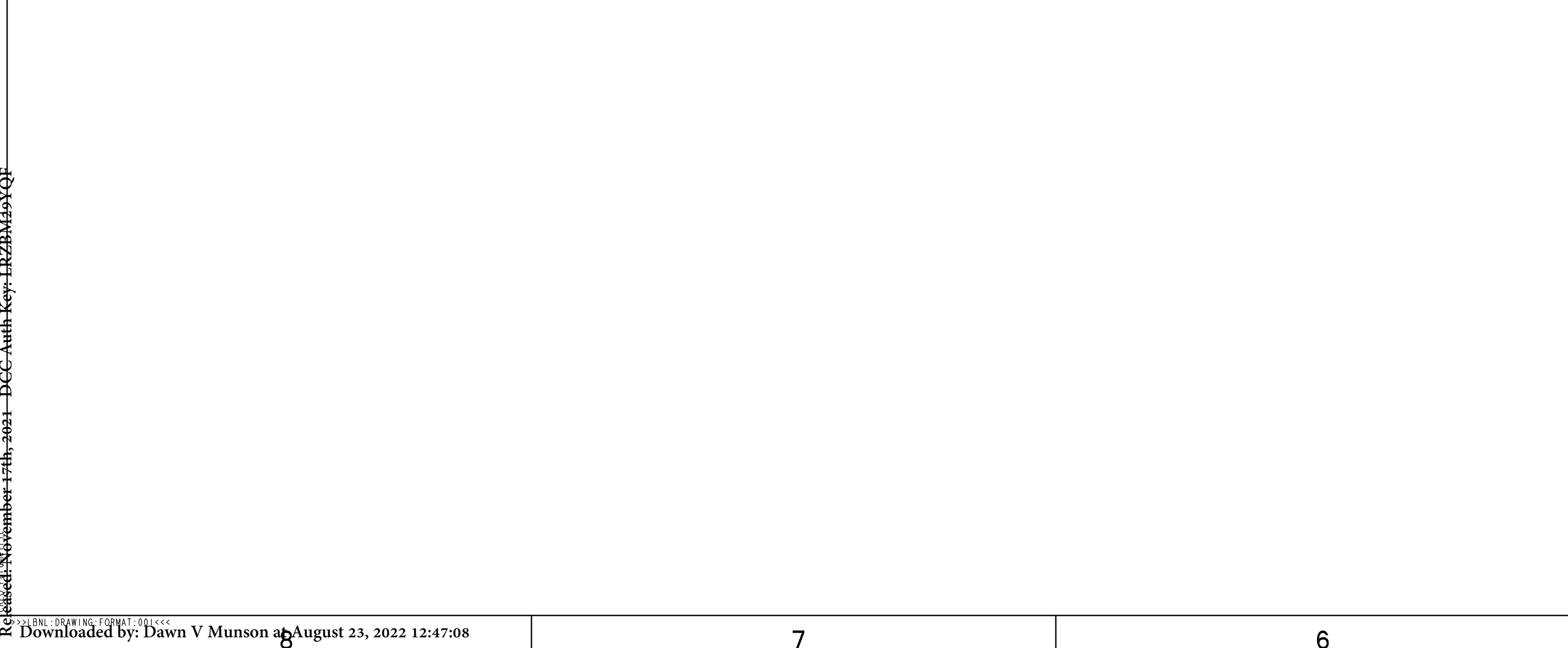
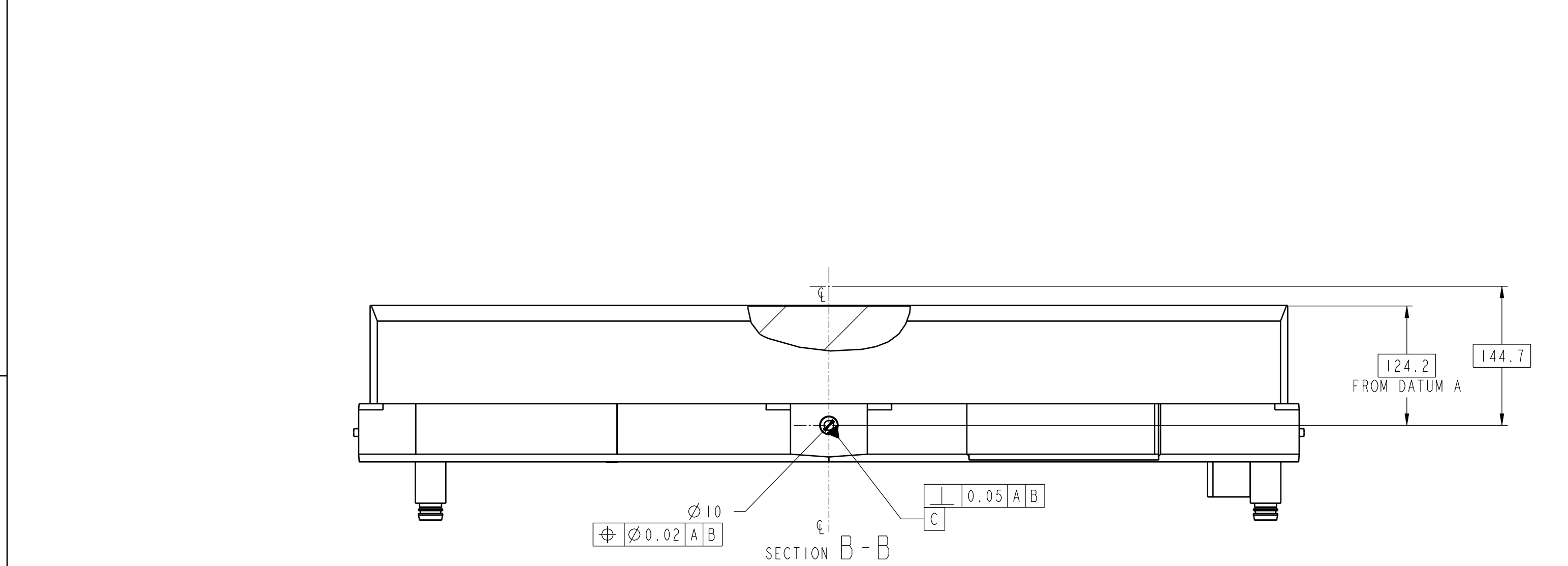
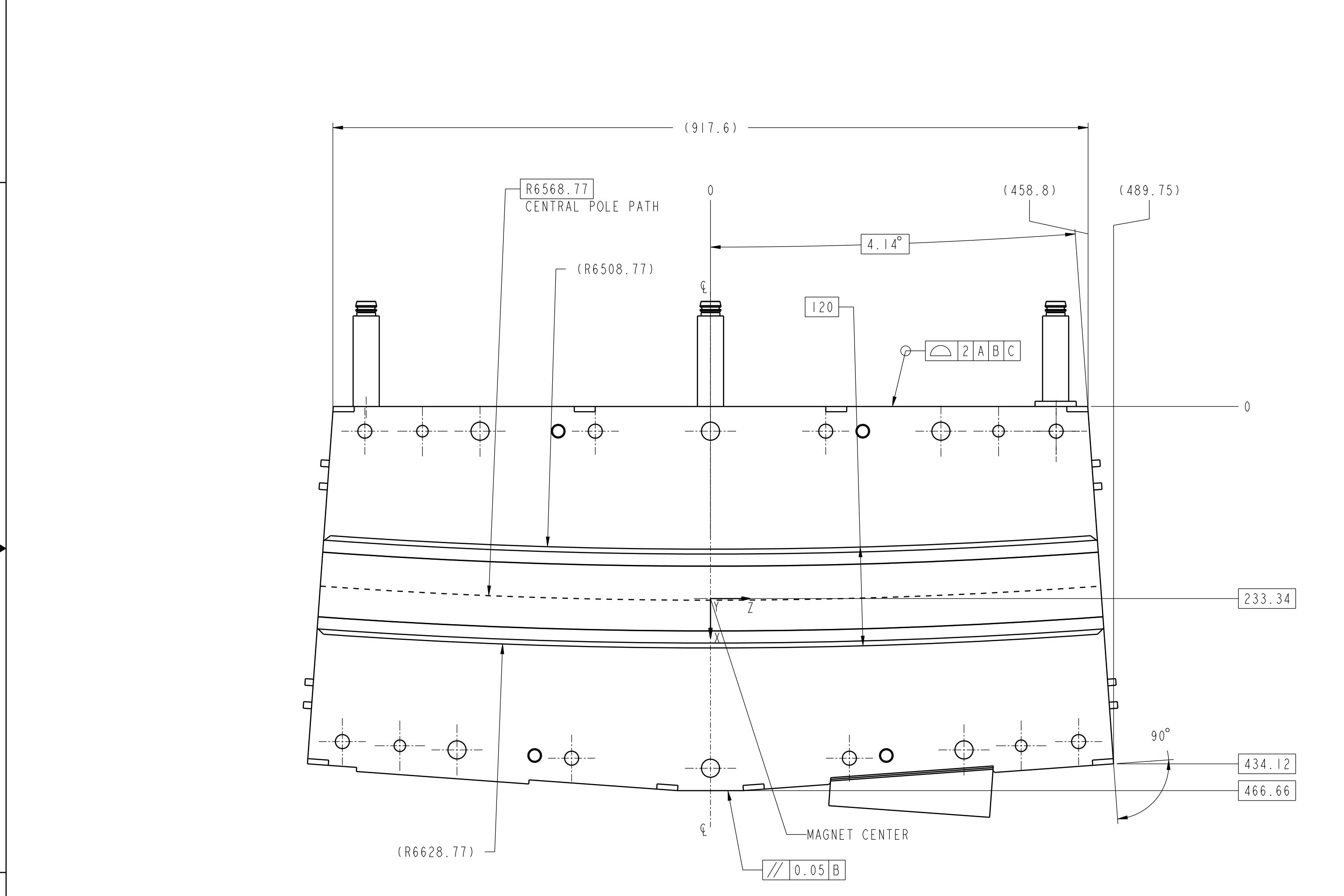
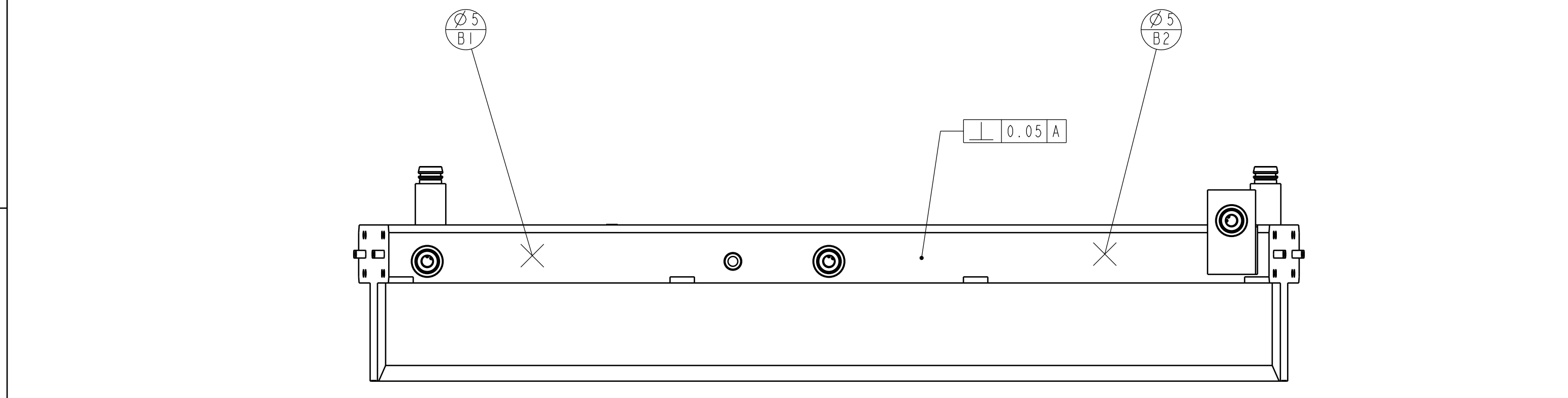
904. RETROREFLECTOR NEST TO BE PURCHASED BY LBNL AND SUPPLIED TO VENDOR.

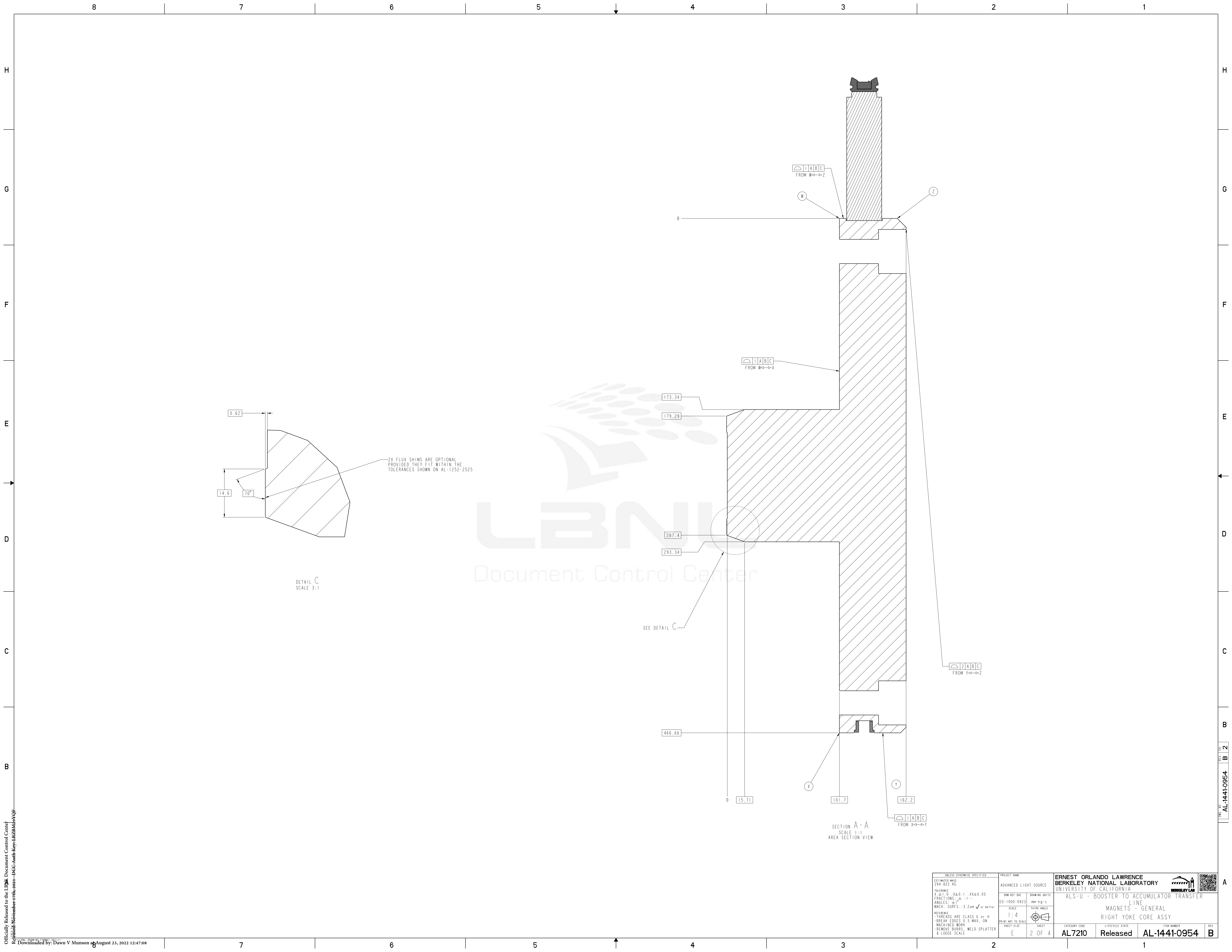
905. HOLES MARKED "L" ARE POTENTIAL HOIST RING ATTACHMENT POINTS. IF LIFTING FIXTURE NECESSARY, THEN IT IS TO BE DESIGNED BY VENDOR. LIFTING FIXTURE MUST FIT WITHIN FOOTPRINT OF MAGNET YOKE. ADDITIONAL FEATURES FOR LIFTING FIXTURE SUBJECT TO LBNL APPROVAL.

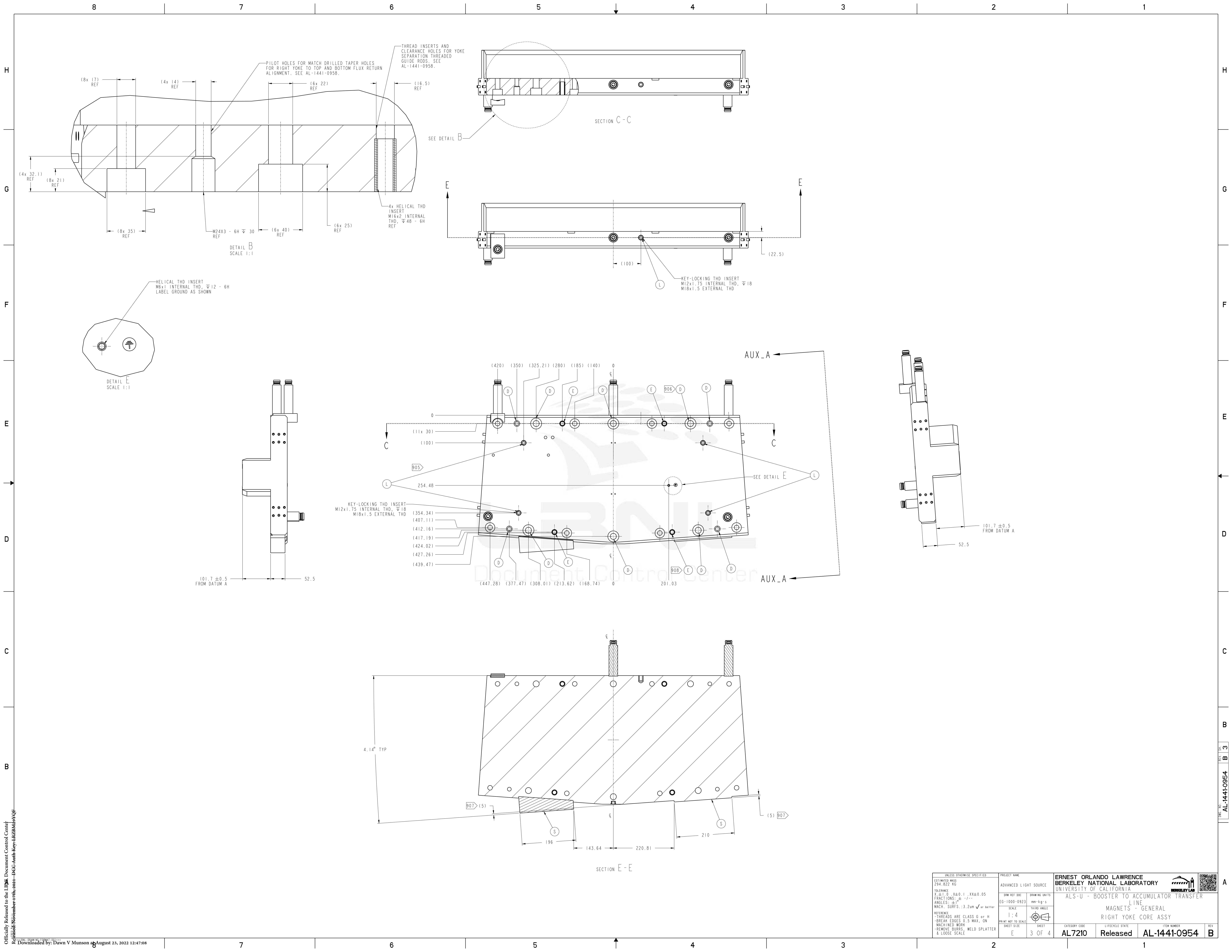
906. HOLES MARKED "D" ARE BOTTOM AND TOP YOKE FLUX MOUNTING AND ALIGNMENT FEATURES. HOLES AND ALIGNMENT FEATURES TO BE DESIGNED BY VENDOR, APPROVED BY LBNL. FEATURES MUST SATISFY MULTIPOLE AND ALIGNMENT REQUIREMENTS (SEE BTA DIPOLE COMMON MECHANICAL REQUIREMENTS DOCUMENT). SEE AL-1441-0958 FOR FEATURE MOUNTING AND ALIGNMENT PROCESS DEFINITION.

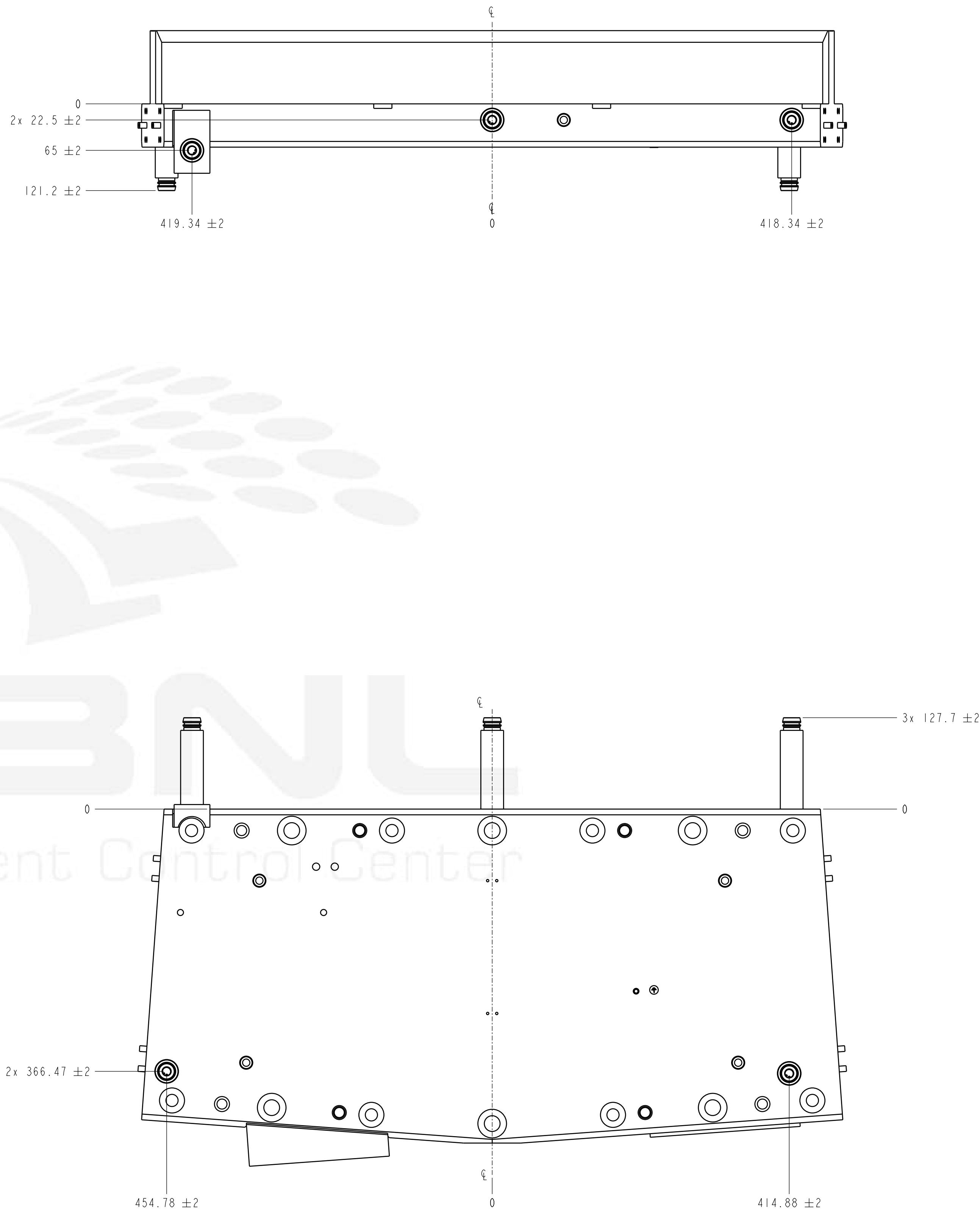
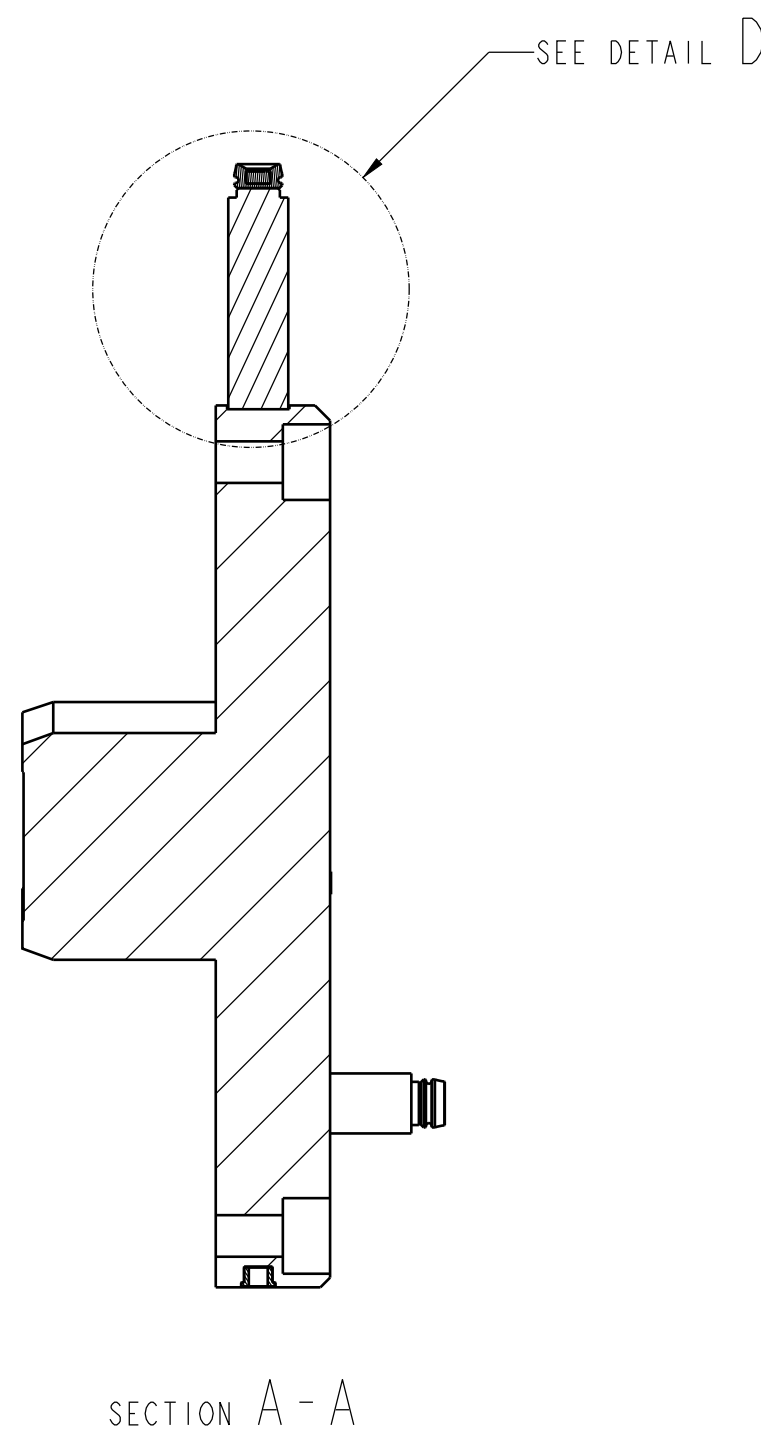
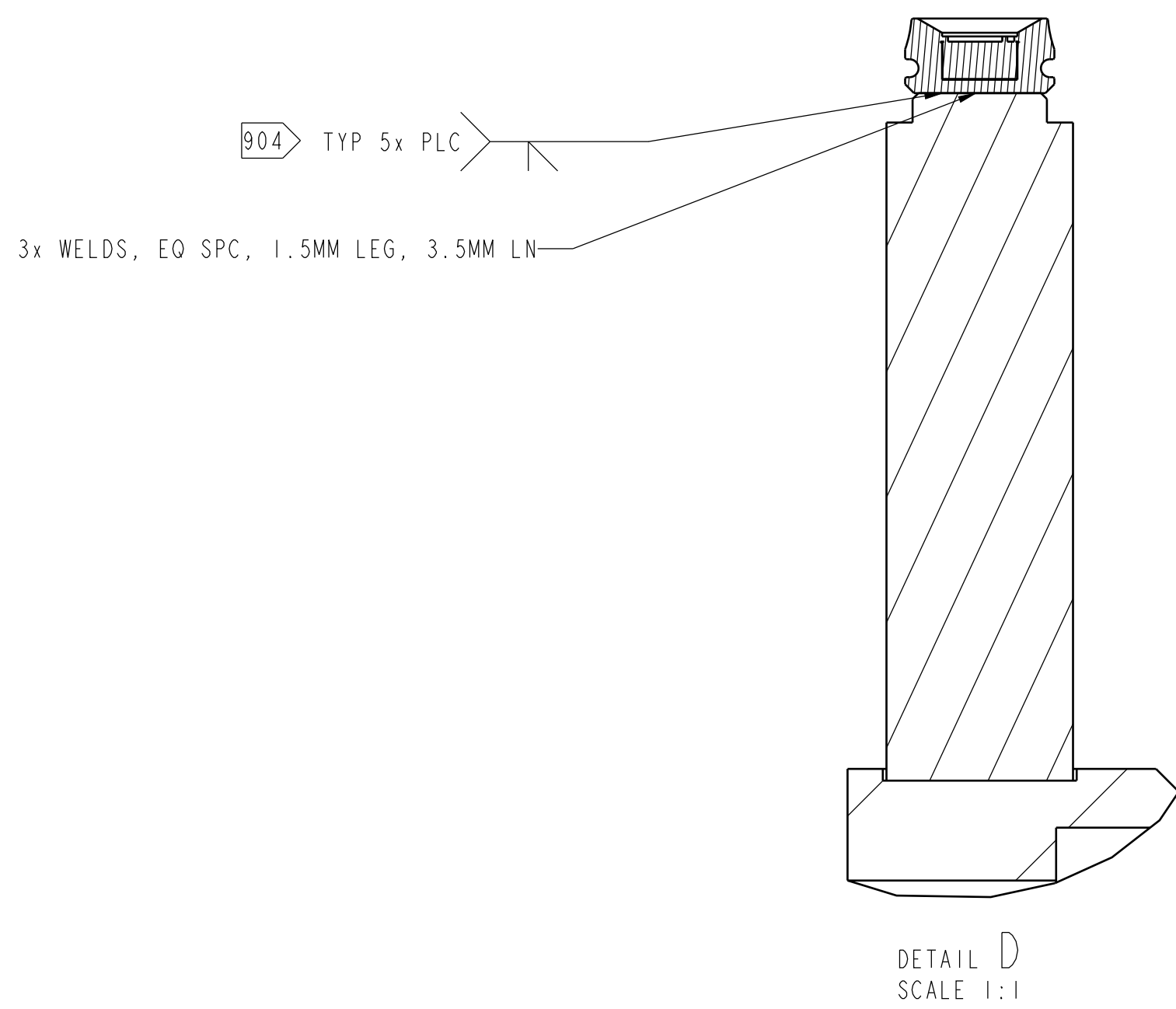
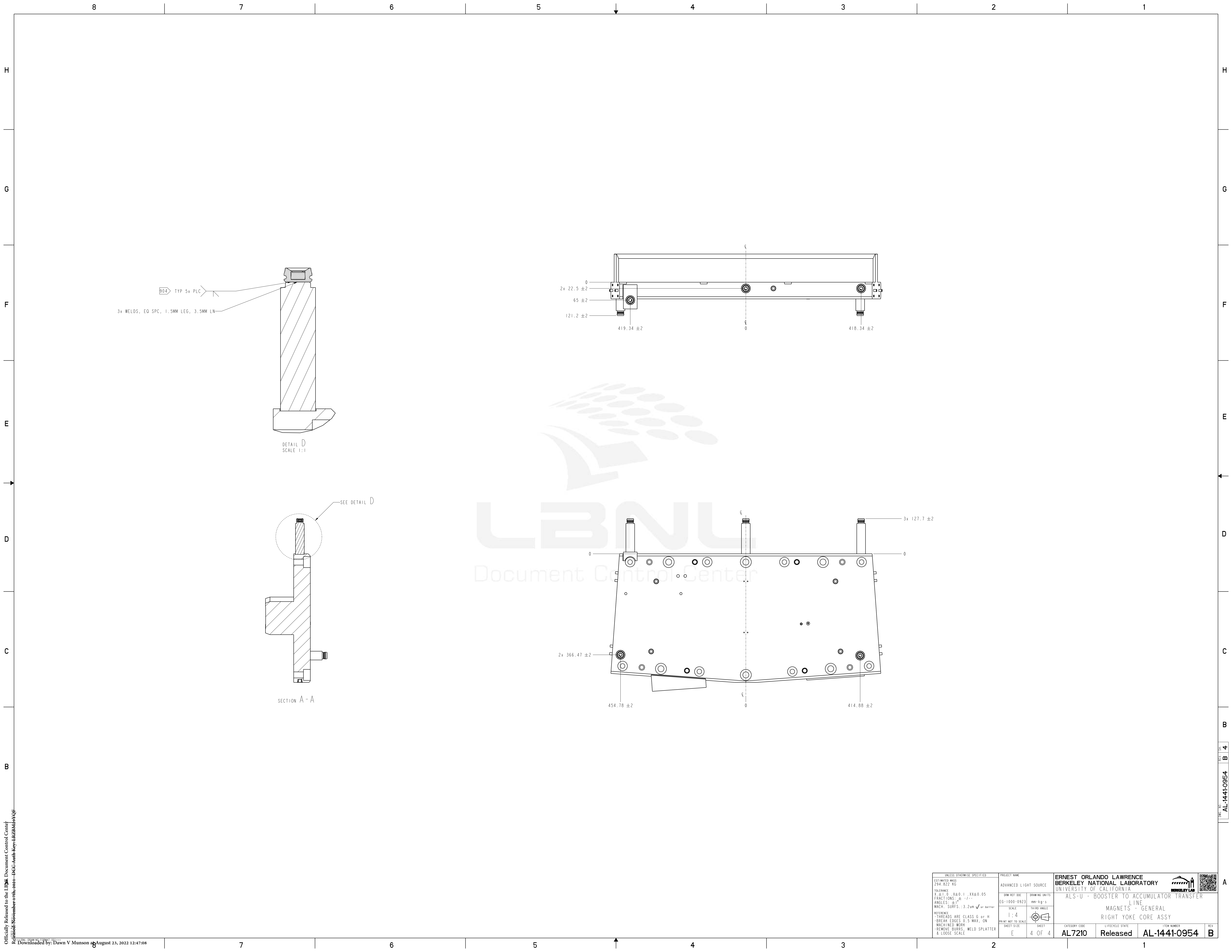
907. SUPPORT EXTRUSION FEATURES MARKED "S". EXTRUSION FEATURES MAY BE CONTINUATION OF YOKE OR CARBON STEEL BLOCKS WELDED TO YOKE. FINAL MACHINING TO BE DONE AT MAGNET ASSEMBLY LEVEL, SEE AL-1252-2529.

908. HOLES MARKED "E" ARE FOR MAGNET DIS-ASSEMBLY THREADED GUIDE RODS. HOLE LOCATION AND SPECIFICATION TO BE DETERMINED BY VENDOR, APPROVED BY LBNL.









UNLESS OTHERWISE SPECIFIED		PROJECT NAME		ERNEST ORLANDO LAWRENCE BERKELEY NATIONAL LABORATORY UNIVERSITY OF CALIFORNIA	
ESTIMATED MASS 294.822 KG		ADVANCED LIGHT SOURCE		ALS-U - BOOSTER TO ACCUMULATOR TRANSFER	
TOLERANCE X ± 0.1 X ± 0.05		DRAWING UNITS		MAGNETS - GENERAL	
FRACTIONS: ± 1/16		EG-1000-0923		RIGHT YOKE CORE ASSY	
ANGLES: ± 1°		SCALE		CATEGORY CODE	
MACH. SURFS: ± 3.2um ✓ or better		1:4		AL7210	
REFERENCE THREADS ARE CLASS G or H		THIRD ANGLE		LIFECYCLE STATE	
BREAK EDGES 0.5 MAX, ON		PRINT NOT TO SCALE		Released	
MACHINED WORK		SHEET		ITEM NUMBER	
REMOVE BURRS, WELD SPLATTER		E 4 OF 4		AL-1441-0954	
& LOOSE SCALE				REV	
				B	