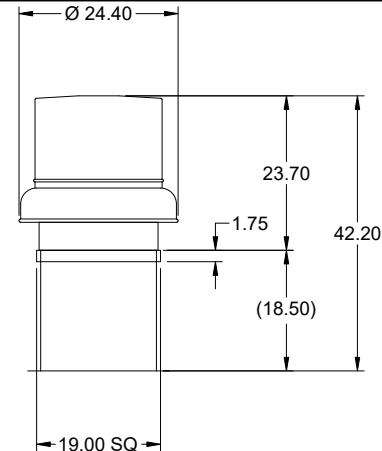


## Model: GB-097-4

### Belt Drive Centrifugal Roof Exhaust Fan

Previously: GB-071-4

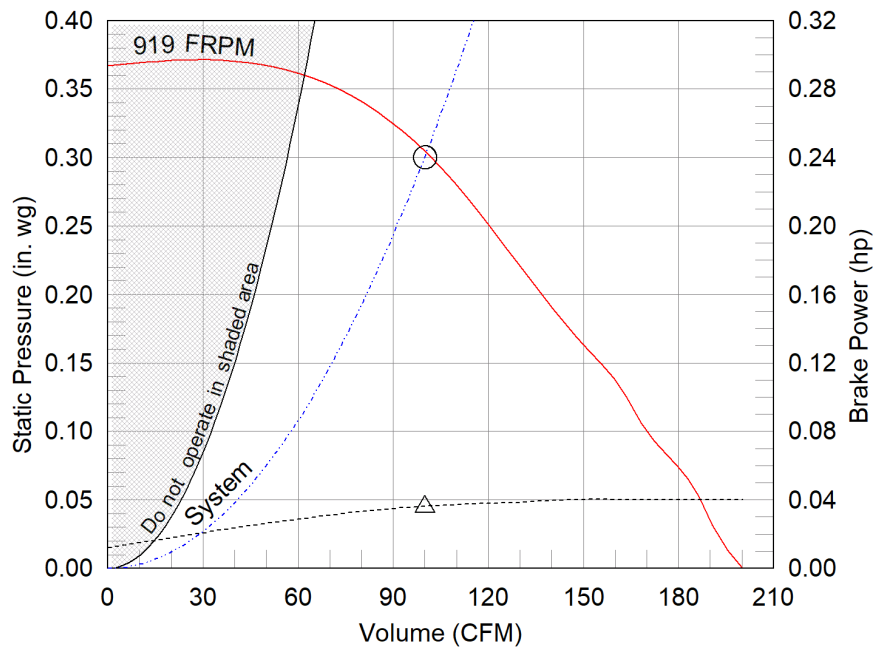
Dimensional	
Quantity	1
Weight w/o Acc's (lb)	61
Weight w/ Acc's (lb)	67
Weight w/ Acc's and Curb (lb)	103
Max T Motor Frame Size	56
Standard Curb Cap Size (in.)	19 x 19
Roof Opening (in.)	15.5 x 15.5



Performance	
Requested Volume (CFM)	100
Actual Volume (CFM)	100
Total External SP (in. wg)	0.3
Fan RPM	919
Operating Power (hp)	0.04
Elevation (ft)	105
Airstream Temp.(F)	70
Air Density (lb/ft3)	0.075
Drive Loss (%)	50.0
Tip Speed (ft/min)	2,690
Static Eff. (%)	26
Misc Fan Data	
Fan Eff. Index (FEI)	-
Outlet Velocity (ft/min)	104

Motor	
Motor Mounted	Yes
Size (hp)	1/4
Voltage/Cycle/Phase	115/60/1
Enclosure	EXP
Motor RPM	1725
Efficiency Rating	Standard
Windings	1
NEC FLA* (Amps)	5.8
Min. Circuit Ampacity (MCA)	7.25
Max. Overcurrent Protection (MOP)	15
Short Circuit Current Rtg (SCCR)	5 kA

OVERALL HEIGHT MAY BE GREATER DEPENDING ON MOTOR, ADAPTER, AND/OR HINGE BASE.



- △ Operating Bhp point
- Operating point at Total External SP
- Fan curve
- - - System curve
- ..... Brake horsepower curve

#### Notes:

All dimensions shown are in units of in.  
\*NEC FLA, MCA and MOP are for reference only – based on tables 430.248 or 430.25 of National Electric Code 2020. Actual motor FLA may vary, for sizing thermal overload, consult factory. MCA and MOP values shown only account for the motor, not accessories (damper actuator, field supplied VFD, etc).  
LwA - A weighted sound power level, based on ANSI S1.4 dBA - A weighted sound pressure level, based on 11.5 dB attenuation per Octave band at 5 ft - dBA levels are not licensed by AMCA International  
Sones - calculated using ANSI/AMCA 301 at 5 ft

#### Sound Power by Octave Band

Sound Data	62.5	125	250	500	1000	2000	4000	8000	LwA	dBA	Sones
Inlet	62	58	58	50	46	39	33	30	54	42	3.0



## Model: GB-097-4

### Belt Drive Centrifugal Roof Exhaust Fan

#### Standard Construction Features:

- Aluminum housing - Backward inclined aluminum wheel - Curb cap with prepunched mounting holes - Motor and drives isolated on shock mounts - Birdscreen - Ball bearing motors - Adjustable motor pulley - Adjustable motor plate - Fan shaft mounted in ball bearing pillow blocks - Bearings meet or exceed temperature rating of fan - Static resistant belts - Corrosion resistant fasteners - Sizes 141 and larger have internal Lifting lugs

#### Spark B construction was selected.

Greenheck has included options and accessories for this product that meet the intent of AMCA 99 - spark resistant construction guidelines. Greenheck recommends, but does not require, an EXP motor for this product line. If an EXP motor is not selected, the engineer of record must determine if this is acceptable for the application. The resulting fan construction in no way implies a guarantee of safety for any level of spark resistance. Spark resistant construction does not prevent ignition of explosive gasses or vapors due to catastrophic failure or from any airstream material that may exist within in a system.

#### Selected Options & Accessories:

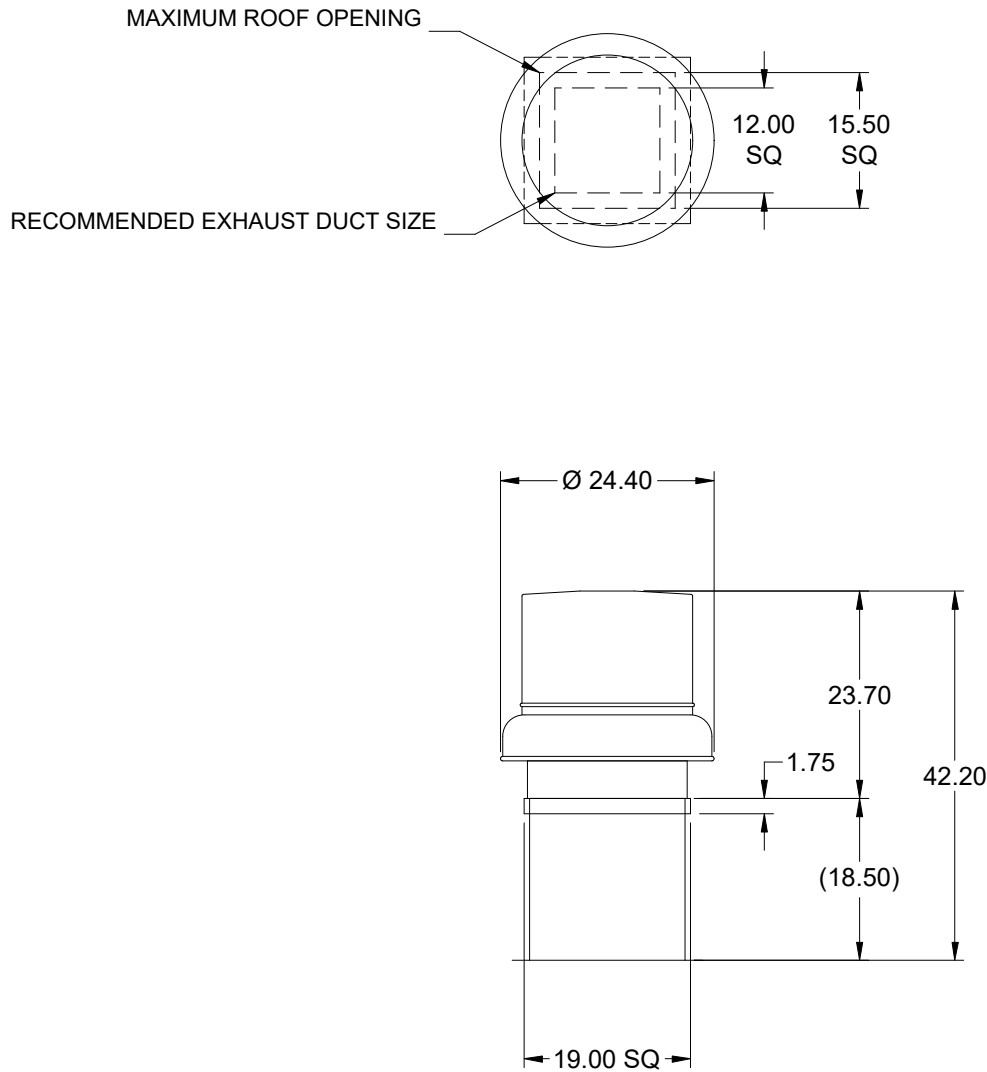
Motor with Thermal Overload  
Standard Curb Cap Size - 19 Square  
Spark B Construction  
UL/cUL 705 Listed - "Power Ventilators"  
Switch, NEMA-7 and 9, Toggle, Shipped with Unit, Division1 Wiring  
Junction Box Mounted & Wired  
High Wind Rated (+/- 150 PSF Rating)  
Florida Product Approval #FL13225.1 & Miami-Dade NOA #21-1129.02  
Birdscreen: Aluminum, nom. 86% Free Area  
Unit Warranty: 1 Yr (Standard)

#### Selected Sub Marks

See individual submittals for full details  
GPF-19-G18

## Assembly Drawing

Type: Belt Drive Centrifugal Roof Exhaust Fan



DUCT DIMENSIONS ARE LARGEST POSSIBLE DUCT TO FIT THROUGH CURB.  
CONSULT SYSTEM DESIGN ENGINEER FOR RECOMMENDED DUCT SIZE.

OVERALL HEIGHT MAY BE GREATER DEPENDING ON MOTOR, ADAPTER, AND/OR  
HINGE BASE.

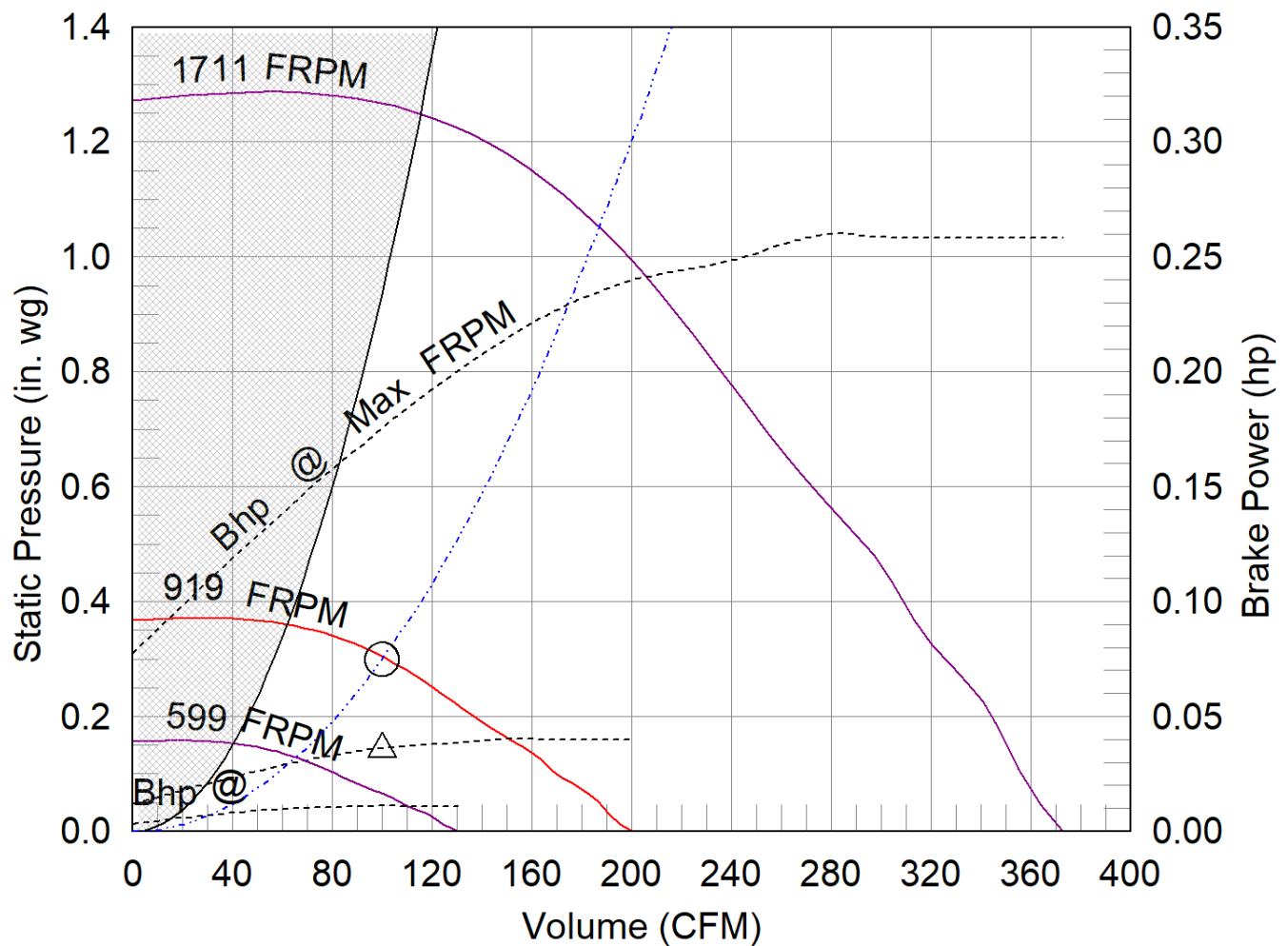
Notes: All dimensions shown are in units of in..

## GB-097-4

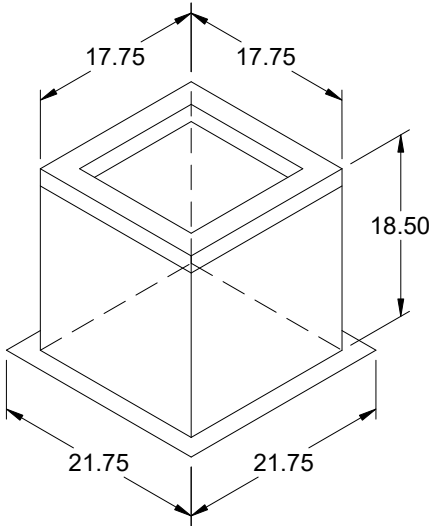
## Min/Max Fan Curve

### Performance

Requested Volume (CFM)	Actual Volume (CFM)	Total External SP (in. wg)	Fan RPM	Operating Power (hp)
100	100	0.3	919	0.04



- △ Operating Bhp point
- Operating point at Total External SP
- Construction Limit
- Fan curve
- Min FRPM
- System curve
- Brake horsepower curve



## Model: GPF

### Roof Curb

#### Standard Construction Features:

- Roof Curb fits between the building roof and the fan mounted directly to the roof support structure - Constructed of either 18 ga galvanized steel or 0.064 in. aluminum - Straight Sided without a cant - 2 in. or 5 in. mounting flange - 1 in. thick 3 lb density insulation - Height - Available from 8 in. to 42 in. as specified in 0.5 in. increments. Notes: - The maximum roof opening dimension should not be greater than the "Actual" top outside dimension minus 2 in.. - The minimum roof opening dimension should be at least 2.5 in. more than the damper dimension or recommended duct size. - The Roof Opening Dimension may or may not be the same as the Structural Opening Dimension. - Damper Tray is optional and must be specified. Tray size is same as damper size. - Security bars are optional and must be specified. Frames and gridwork are all 12 ga steel. Gridwork is welded to the frame and the frame is welded to the curb.

#### General

Tag	Qty	Model	Sizing Method	Undersizing (in.)	Weight (lb)	Shipped Assembled	Union Label
	1	GPF-19	Nominal	1.25	35	Yes	No Preference

#### Dimensions

Curb Height (in.)	Nominal Outside Width (in.)	Nominal Outside Length (in.)	Actual Outside Width (in.)	Actual Outside Length (in.)	Actual Inside Width (in.)	Actual Inside Length (in.)	Flange Width (in.)	Flange Length (in.)	Hinge Base Width* (in.)	Hinge Base Length* (in.)
18.5	19	19	17.75	17.75	14.25	14.25	21.75	21.75	18	18

\*May not be applicable

#### Accessories

Material	Security Bars	Liner	Insulation (in.)	Insulation R Value
Galvanized	No	No	1	R4.3

February 25, 2022

Subject: Greenheck High Wind Certified Models

To whom it may concern:

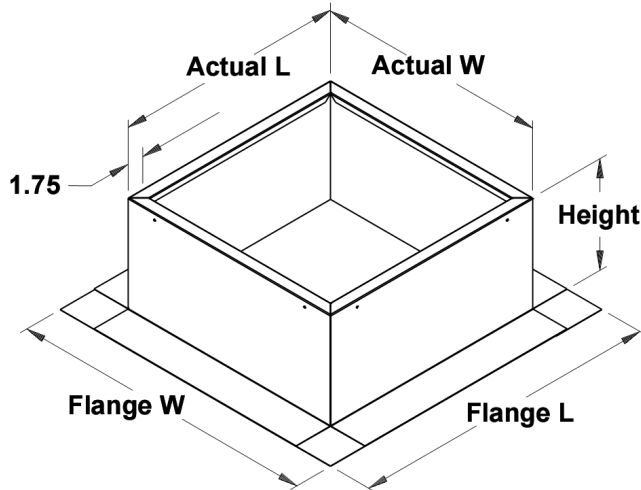
Greenheck has tested and certified a number of models to meet the Miami Dade Building Code Compliance Office hurricane and high wind standards. In addition all products are also certified by the Florida Building Council with a Florida Product Approval number for use in areas of Florida not governed by the Miami Dade regulations. All products are tested and certified by an independent third party for use in high wind and hurricane areas.

The chart below lists the applicable information for each of the certified models. A complete certification report can be found on the Miami-Dade website for the Notice of Acceptance (NOA) numbers ([www.miamidade.gov](http://www.miamidade.gov)) or the Florida Building Code website for the FLPA numbers ([www.floridabuilding.org](http://www.floridabuilding.org)).

Fan Model	Available Sizes	Protocols Tested	Miami-Dade NOA	FLPA Number	Max. Wind Load - PSF
G/GB	060-300	TAS-201 TAS-202 TAS-203	21-1129.02	FL13225.1	150
CUE/CUBE	060-300		21-1129.02	FL13225.1	150
FGI/FGR	Intake 54x54 Relief 66x66		21-1122.09	FL12917.1	Steel - 70 Aluminum - 40
R Series Rooftop Prop	Unfiltered 18-48 Filtered 18-42		21-1122.09	FL12917.1	Steel - 70 Aluminum - 40
RSF	90-200		21-1122.10	FL41062.1	40

Roof Curb

Model: GPF



**Standard Construction Features:**

- Roof Curb fits between the building roof and the fan mounted directly to the roof support structure
- Constructed of either 18 ga galvanized steel or 0.064 in. aluminum
- Straight Sided without a cant - 2 in. or 5 in. mounting flange - 1 in. thick 3 lb density insulation
- Height - Available from 8 in. to 42 in. as specified in 0.5 in. increments.

**Notes:**

- The maximum roof opening dimension should not be greater than the "Actual" top outside dimension minus 2 in..
- The minimum roof opening dimension should be at least 2.5 in. more than the damper dimension or recommended duct size.
- The Roof Opening Dimension may or may not be the same as the Structural Opening Dimension.
- Damper Tray is optional and must be specified. Tray size is same as damper size.
- Security bars are optional and must be specified. Frames and gridwork are all 12 ga steel. Gridwork is welded to the frame and the frame is welded to the curb.

**Roof Curb Configuration:**

ID #:	Tag:	Qty:	Curb Cap W x L:	Actual W x L:	Flange W:	Flange L:	Height:	Step Hgt:	Damper Tray W x L:
2	EF-1	1	19 x 19	17.75 x 17.75	27.75	27.75	18	N/A	x

Notes: All dimensions shown are in units of in.