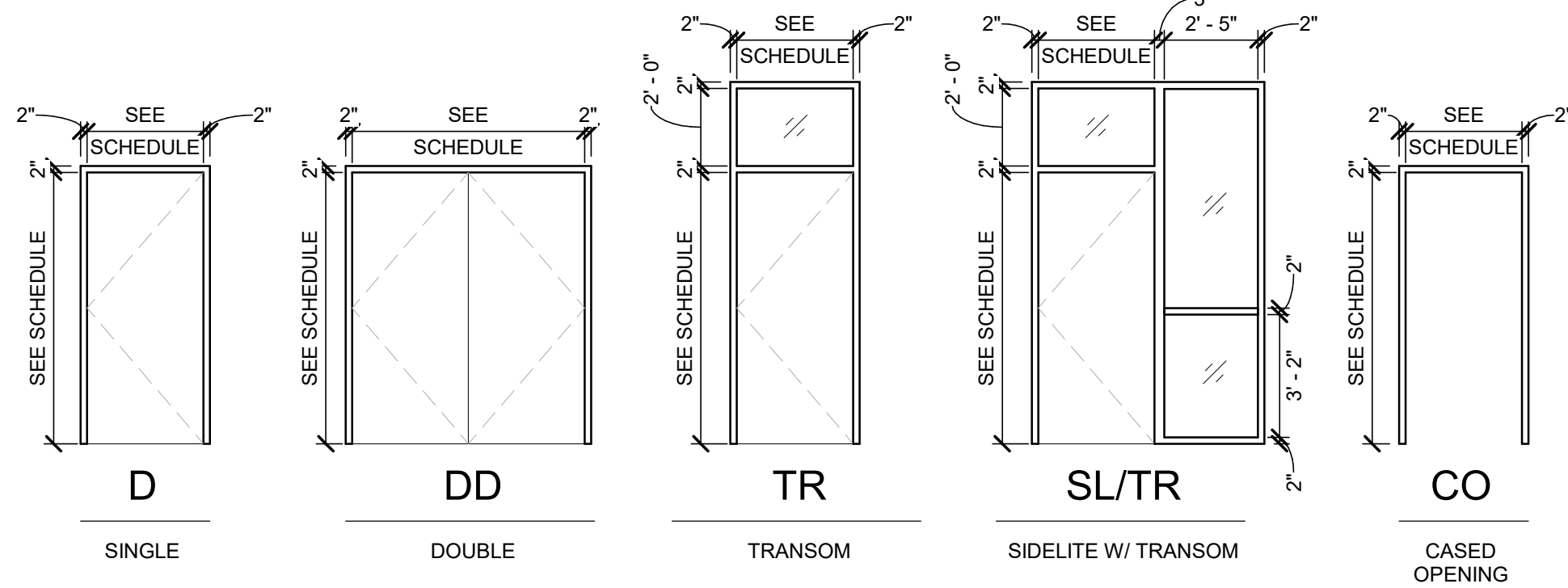
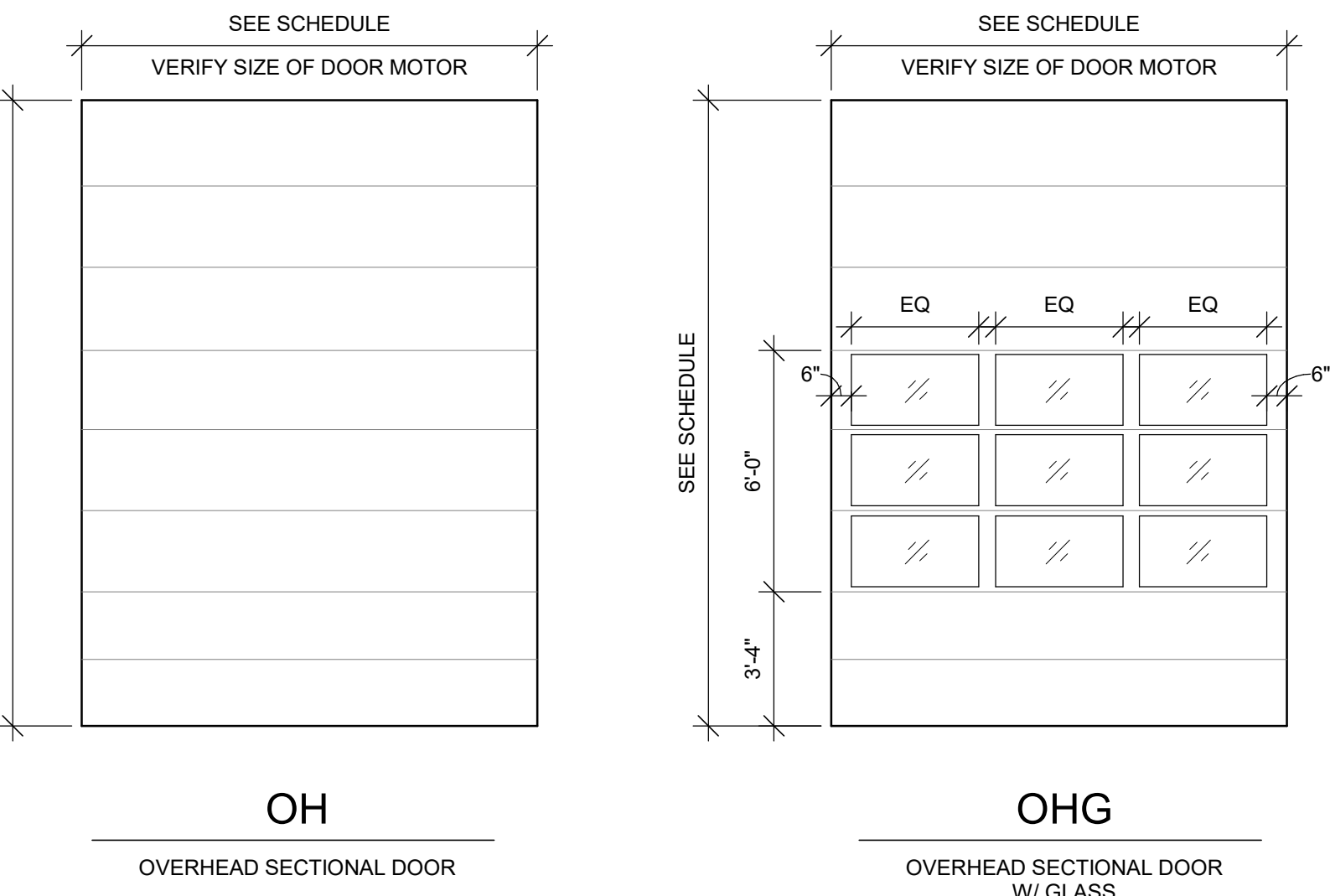
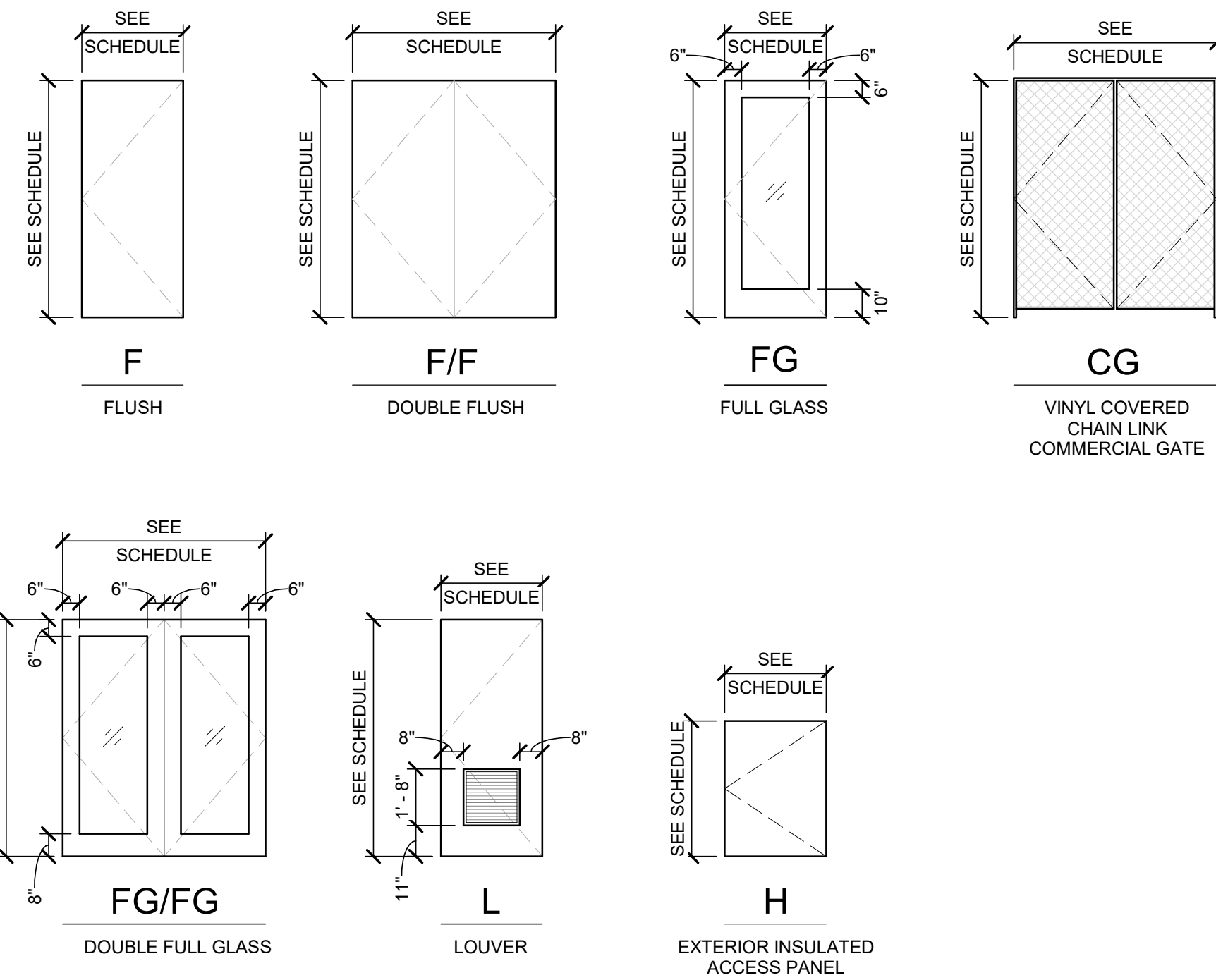


## DOOR FRAME TYPES



## DOOR TYPES



## DOOR SCHEDULE - BASE BID

ROOM NO.	DOOR OPENING		DOOR PANEL				DOOR FRAME			FIRE RATING	DETAILS			REMARKS	HARDWARE
	WIDTH	HEIGHT	TYPE	THICKNESS	MATERIAL	GLASS	FINISH	TYPE	MATERIAL	FINISH	HEAD	JAMB	SILL		
100	6'-0"	9'-2"	FG	1 3/4"	ALUM	GL-1	-	ALUM		NR	B1/A-502	A4/A-522	A1/A-502	4	2.0
100A	6'-0"	9'-2"	FG	1 3/4"	ALUM	GL-1	-	ALUM		NR	C3/A-720	B4/A-522	B1/A-720	4	1.0
102	6'-0"	9'-2"	FG	1 3/4"	ALUM	GL-1	-	ALUM		NR	B3/A-503	A4/A-522	A1/A-502	4	2.0
103	3'-0"	9'-4"	FG	1 3/4"	ALUM	GL-1	-	ALUM		NR	B3/A-502	A4/A-522	A1/A-502	4	4.0
104	3'-0"	7'-0"	F	1 3/4"	SCW	GL-2		SL/TR	HM	NR	C4/A-720	C3/A-720	D4/A-721	-	11.0
104A	3'-0"	7'-0"	F	1 3/4"	SCW	GL-2		SL/TR	HM	NR	C4/A-720	C3/A-720	D4/A-721	-	13.0
105A	3'-0"	7'-0"	F	1 3/4"	SCW	GL-2		SL/TR	HM	NR	C4/A-720	C3/A-720	D4/A-721	-	11.0
105B	3'-0"	7'-0"	F	1 3/4"	SCW	GL-2		SL/TR	HM	NR	C4/A-720	C3/A-720	D4/A-721	-	11.0
106	3'-0"	7'-0"	F	1 3/4"	SCW	-		D	HM	NR	C2/A-720	A2/A-720	D4/A-721	-	12.0
107	3'-0"	7'-0"	F	1 3/4"	HM	GL-1		TR	HM	NR	B3/A-721	A3/A-721	B4/A-721	-	6.0
108	3'-0"	7'-0"	F	1 3/4"	SCW	-		D	HM	NR	C2/A-720	A2/A-720	D4/A-721	-	11.0
109	3'-0"	7'-0"	F	1 3/4"	SCW	GL-1		TR	HM	NR	B3/A-721	A3/A-721	B4/A-721	-	8.0
110	3'-0"	7'-0"	F	1 3/4"	SCW	GL-2		SL/TR	HM	NR	C4/A-720	C3/A-720	D4/A-721	-	11.0
110A	3'-0"	7'-0"	F	1 3/4"	SCW	GL-2		SL/TR	HM	NR	C4/A-720	C3/A-720	D4/A-721	-	13.0
110B	3'-0"	7'-0"	F	1 3/4"	SCW	GL-2		SL/TR	HM	NR	C4/A-720	C3/A-720	D4/A-721	-	13.0
111	3'-0"	7'-0"	L	1 3/4"	SCW	NA		D	HM	NR	C2/A-720	A2/A-720	D4/A-721	-	14.0
111A	3'-0"	7'-0"	L	1 3/4"	SCW	NA		D	HM	NR	C2/A-720	B4/A-720	D4/A-721	-	14.0
111B	4'-0"	7'-0"	NA	0"	-	-		CO	HM	NR	A1/A-720	A1/A-720	-	-	
112	3'-0"	7'-0"	L	1 3/4"	SCW	NA		D	HM	NR	C2/A-720	A2/A-720	D4/A-721	-	14.0
112A	3'-0"	7'-0"	L	1 3/4"	SCW	NA		D	HM	NR	C2/A-720	B4/A-720	D4/A-721	-	14.0
112B	4'-0"	7'-0"	NA	0"	-	-		CO	HM	NR	A1/A-720	A1/A-720	-	-	
113	3'-0"	9'-2"	FG	1 3/4"	ALUM	GL-1	-	ALUM		NR	B1/A-502	A4/A-522	C4/A-721	4	4.0
113A	3'-0"	9'-2"	FG	1 3/4"	ALUM	GL-1	-	ALUM		NR	C3/A-720	B4/A-522	B1/A-720	4	3.0
114	3'-0"	7'-0"	F	1 3/4"	HM	-		D	HM	NR	D1/A-720	C1/A-720	B4/A-721	3	11.0
114A	3'-0"	7'-0"	F	1 3/4"	HM	GL-1		TR	HM	NR	B3/A-721	A3/A-721	B4/A-721	3	8.0
114B	3'-0"	7'-0"	F	1 3/4"	HM	-		D	HM	NR	B3/A-721	A3/A-721	B4/A-721	3	8.0
114C	3'-0"	7'-0"	F	1 3/4"	HM	-		D	HM	NR	B3/A-721	A4/A-523	B4/A-721	3	8.0
114D	14'-0"	16'-0"	OHG	2"	STL	GL-1				NR	A1/A-508	A4/A-721	A3/A-508	2, 7	15.0
114E	14'-0"	16'-0"	OHG	2"	STL	GL-1				NR	A1/A-508	A4/A-721	A3/A-508	2, 7	15.0
114F	14'-0"	16'-0"	OHG	2"	STL	GL-1				NR	A1/A-508	A4/A-721	A3/A-508	2, 7	15.0
114G	14'-0"	16'-0"	OHG	2"	STL	GL-1				NR	A1/A-508	A4/A-721	A3/A-508	2, 7	15.0
114H	6'-0"	7'-0"	F	2"	STL	-		-		NR	A4/A-542	D1/A-721	A4/A-542	6	8.0
115	6'-0"	7'-0"	CG	1 3/4"	CL					NR	SEE A-540	SEE A-540	SEE A-540	1	9.0
116	6'-0"	9'-2"	F/F	1 3/4"	HM	-		DD	HM	NR	B3/A-721	A3/A-721	B4/A-721	-	5.0
117	3'-0"	7'-0"	F	1 3/4"	HM	-		D	HM	NR	A4/A-720	A4/A-720	B1/A-721	-	12.0
119A	3'-0"	7'-0"	F	1 3/4"	HM	GL-1		TR	HM	NR	B3/A-721	A3/A-721	B4/A-721	3	11.0
119B	3'-0"	7'-0"	F	1 3/4"	HM	-		D	HM	NR	B3/A-721	A4/A-523	B4/A-721	3	11.0
119C	16'-0"	20'-0"	OH	2"	STL	GL-1				NR	A1/A-508	A4/A-721	A3/A-508	2, 8	15.0
119D	20'-0"	20'-0"	OH	2"	STL	GL-1				NR	A1/A-508	A4/A-721	A3/A-508	2, 8	15.0
120A	3'-0"	7'-0"	F	1 3/4"	HM	GL-1		TR	HM	NR	B3/A-721	A3/A-721	B4/A-721	3	11.0
120B	3'-0"	7'-0"	F	1 3/4"	HM	GL-1		TR	HM	NR	B3/A-721	A3/A-721	B4/A-721	3	11.0
120C	20'-0"	20'-0"	OH	2"	STL	GL-1				NR	A1/A-508	A4/A-721	A3/A-508	2, 9	15.0
120D	20'-0"	20'-0"	OH	2"	STL	GL-1				NR	A1/A-508	A4/A-721	A3/A-508	2, 9	15.0
121A	3'-0"	7'-0"	F	1 3/4"	HM	-		D	HM	NR	B3/A-721	A3/A-721	B4/A-721	-	
121B	3'-0"	7'-0"	F	1 3/4"	HM	GL-1		TR	HM	NR	B3/A-721	A3/A-721	B4/A-721	-	
121C	3'-0"	7'-0"	F	1 3/4"	HM	GL-1		TR	HM	NR	B3/A-721	A3/A-721	B4/A-721	5	8.0
121D	3'-0"	7'-0"	F	1 3/4"	HM	GL-1		TR	HM	NR	B3/A-721	A3/A-721	B4/A-721	5	8.0
121E	14'-0"	16'-0"	OHG	2"	STL	GL-1				NR	A1/A-508	A4/A-721	A3/A-508	4, 7	15.0
121F	14'-0"	16'-0"	OHG	2"	STL	GL-1				NR	A1/A-508	A4/A-721	A3/A-508	4, 7	15.0
121G	14'-0"	16'-0"	OHG	2"	STL	GL-1				NR	A1/A-508	A4/A-721	A3/A-508	4, 7	15.0
121H	14'-0"	16'-0"	OHG	2"	STL	GL-1				NR	A1/A-508	A4/A-721	A3/A-508	4, 7	15.0
121J	14'-0"	16'-0"	OHG	2"	STL	GL-1				NR	A1/A-508	A4/A-721	A3/A-508	4, 9	15.0
121K	3'-0"	7'-0"	F	2"	STL	-		-		NR	A1/A-721	D3/A-721	A1/A-721	5	8.0
122	6'-0"	7'-0"	CG	1 3/4"	CL					NR	SEE A-540	SEE A-540	SEE A-540	1	9.0
S101A	3'-0"	7'-0"	F	1 3/4"	HM	GL-1		TR	HM	NR	B3/A-721	A3/A-721	B4/A-721	-	11.0
S401B	3'-0"	7'-0"	F	1 3/4"	HM	GL-1		TR	HM	NR	B3/A-721	A3/A-721	B4/A-721	-	11.0
S101C	20'-0"	20'-0"	OH	2"	STL	GL-1				NR	A1/A-508	A4/A-721	A3/A-508	8	15.0
S101D	20'-0"	20'-0"	OH	2"	STL	GL-1				NR	A1/A-508	A4/A-721	A3/A-508	8	15.0

## DOOR SCHEDULE - OLI WASH RACK

	DOOR OPENING		DOOR PANEL				DOOR FRAME			FIRE RATING	DETAILS			REMARKS	HARDWARE
	WIDTH	HEIGHT	TYPE	THICKNESS	MATERIAL	GLASS	FINISH	TYPE	MATERIAL	FINISH	HEAD	JAMB	SILL		
123	6'-0"	7'-0"	F/F	1 3/4"	HM			DD	HM			A4/A-720	A3/A-720	-	10.0
123A	3'-0"	7'-0"	F	1 3/4"	HM	GL-1		TR	HM					-	7.0
123B	3'-0"	7'-0"	F	1 3/4"	HM	GL-1		TR	HM					-	7.0
123C	20'-0"	20'-0"	OHG	2"	STL	GL-1						B1/A-506		A1/A-506	15.0
123D	20'-0"	20'-0"	OHG	2"	STL	GL-1						B1/A-506		A1/A-506	15.0
123E	20'-0"	20'-0"	OH	2"	STL	-		-						6	8.0

**NOTE:** THE OLI WASH RACK DOOR SCHEDULE CONTAINS DOORS THAT ARE TO BE INCLUDED FOR CONSTRUCTION ONLY IF THE WASH RACK OLI IS ACCEPTED. THESE DOORS ARE TO BE INCLUDED IN ADDITION TO THE BASE BID DOOR SCHEDULE.

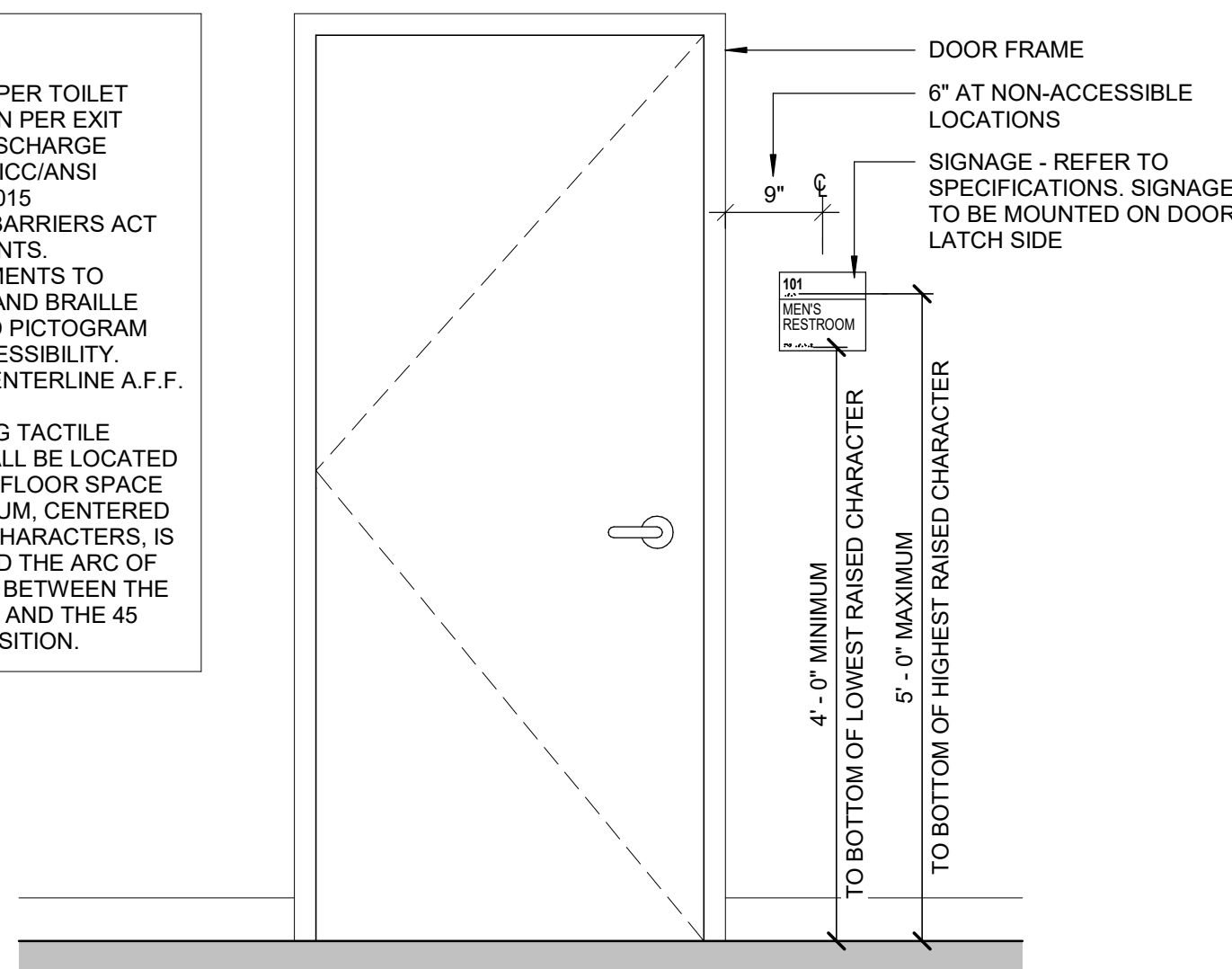
### DOOR PANEL MATERIAL LEGEND

ALUM	ALUMINUM
CL	VINYL COVERED CHAIN LINK
HM	HOLLOW METAL
SCW	SOLID CORE WOOD
STL	STEEL

### NOTE:

PROVIDE (1) SIGN PER TOILET ROOM AND (1) SIGN PER EXIT PASSAGEWAY / DISCHARGE COMPLYING WITH ICC/ANSI A117.1-2009 AND 2015 ARCHITECTURAL BARRIERS ACT (ABA) REQUIREMENTS. WAYFINDING ELEMENTS TO CONTAIN RAISED AND BRAILLE CHARACTERS AND PICTOGRAM SYMBOLS OF ACCESSIBILITY. MOUNT 5'-0" TO CENTERLINE A.F.F.

SIGNS CONTAINING TACTILE CHARACTERS SHALL BE LOCATED SO THAT A CLEAR FLOOR SPACE OF 18" X 18" MINIMUM, CENTERED ON THE TACTILE CHARACTERS, IS PROVIDED BEYOND THE ARC OF ANY DOOR SWING BETWEEN THE CLOSED POSITION AND THE 45 DEGREE OPEN POSITION.



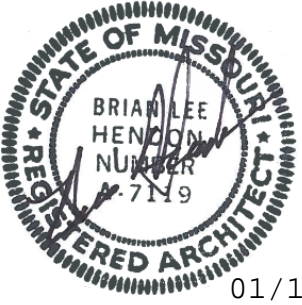
TYPICAL SIGNAGE MOUNTING LOCATION AT DOOR

## DOOR SCHEDULE GENERAL NOTES

- DOOR DETAILS ARE ON A-720 AND A-721 UNLESS OTHERWISE NOTED.
- ALL WOOD DOORS SHALL BE PREFINISHED; REFER TO SPECIFICATIONS.
- ALL STEEL DOORS AND FRAMES SHALL BE PAINTED.
- DO NOT PAINT LABELS OF TESTING AGENCY ON FIRE RATED DOORS AND FRAMES.
- ALL EXTERIOR STEEL DOORS AND FRAMES SHALL BE GALVANIZED. SOME INTERIOR DOORS AND FRAMES ARE GALVANIZED. REFER TO DOOR SCHEDULE. WIPE COAT GALVANIZED STEEL IS NOT ACCEPTABLE.
- ALL FIRE RATED DOORS SHALL BE SELF CLOSING AND SELF-LATCHING.
- FIRE DOORS AND FRAMES SHALL HAVE A LABEL OR LISTING MARK INDICATING THE FIRE PROTECTION RATING APPROVED BY THE AUTHORITY HAVING JURISDICTION.
- FIRE-RATED DOOR FRAMES SHALL BE INSTALLED STRICTLY PER MANUFACTURER'S PRINTED INSTRUCTIONS. MANUFACTURER'S PRINTED INSTRUCTIONS SHALL BE MADE AVAILABLE TO THE INSPECTION AUTHORITY.
- ALL EXTERIOR DOORS SHALL BE INSULATED.
- ALL EXIT HARDWARE SHALL ALLOW DOORS TO BE OPENED IN THE DIRECTION OF EXIT WITHOUT THE USE OF A KEY OR SPECIAL KNOWLEDGE / EFFORT.
- THE MAXIMUM EXTERIOR DOOR OPENING EFFORTS SHALL NOT EXCEED 8.5 POUNDS.
- BOTH THE LATCHING AND DEADBOLT DEVICES ON EXTERIOR DOORS SHALL RELEASE WITH A SINGLE ACTION OF THE INSIDE LEVER.
- REMOVABLE GLAZING STOPS AT SIDELIGHTS AND TOPLIGHTS SHALL BE INSTALLED ON SECURE SIDE. REFER TO A-630 FOR INTERIOR GLAZING BASIS OF DESIGN PER GLAZING "TYPE" INDICATED ON SCHEDULE.
- DO NOT CAULK BACK BEND STEEL DOOR FRAMES TO GYPSUM BOARD PARTITIONS.
- THE DOOR FRAME MANUFACTURER SHALL VERIFY ACTUAL WALL / PARTITION THICKNESS WITH CONTRACTOR PRIOR TO FABRICATION OF DOOR FRAMES.
- REFER TO SPECIFICATIONS FOR HARDWARE GROUPS.
- DOOR FRAMES AND EDGES OF DOORWAYS USED FOR VEHICLE ENTRY AND EXIT WITHIN THE VEHICLE MAINTENANCE AREA THAT COULD POSE A HAZARD TO VEHICULAR TRAFFIC SHALL BE HIGHLIGHTED. HIGHLIGHTED OR REFLECTIVE AREAS SHALL BE PAINTED OR MARKED, WHEN POSSIBLE, IN CONTRASTING COLORS WITH THREE INCH STRIPES, THREE INCHES APART AND AT LEAST FOUR FEET UP FROM THE GROUND. YELLOW & BLACK MARKINGS SUGGESTED. (REFERENCE AFMAN91-201, 32.4)

## DOOR SCHEDULE REMARKS LEGEND

- VINYL COVERED CHAIN-LINK ENCLOSURE WITH COMMERCIAL GATE WITH APPROVED LOCK
- DOOR TO HAVE "AUTHORIZED PERSONNEL ONLY" & "SOUND HORN PRIOR TO ENTERING OR EXITING" SIGNS
- DOOR TO HAVE "AUTHORIZED PERSONNEL ONLY" SIGN
- REFER TO A-630 FOR ALUMINUM STOREFRONT ENTRY GLAZING
- DOOR TO BE EXCLUDED IF OLI WASH RACK IS ACCEPTED
- WALL MOUNTED ACCESS PANEL FOR ROOF ACCESS; REFER TO CLERESTORY DRAWINGS FOR LOCATIONS
- TRACK LIFT CLEARANCE TO BE 12'-0" ABOVE OPENING (28'-0" AFF); ALIGNED WITH TOP OF CLERESTORY STOREFRONT WINDOW SYSTEM; HORIZONTAL TRACK SUPPORT BY DOOR MANUFACTURER.
- TRACK LIFT CLEARANCE TO BE 2'-0" ABOVE OPENING (22'-0" AFF); HORIZONTAL TRACK SUPPORT BY DOOR MANUFACTURER.
- TRACK LIFT CLEARANCE TO BE 4'-10" ABOVE OPENING (24'-10" AFF); HORIZONTAL TRACK SUPPORT BY DOOR MANUFACTURER.
- TRACK LIFT CLEARANCE TO BE 9'-0" ABOVE OPENING (25'-0" AFF); HORIZONTAL TRACK SUPPORT BY DOOR MANUFACTURER.



01/12/2023

REV	DESCRIPTION	DATE
1	AMENDMENT 001	JAN 2023

## COMPOSITE ASE AND VMXS FACILITY

CONNECTICUT AIR NATIONAL GUARD  
103 RD AIRLIFT WING - BRADLEY AIR NATIONAL  
GUARD BASE  
EAST GRANBY, CONNECTICUT

Jacobs Project No.: D3257200

Drawing Title:

ARCHITECTURAL  
DOOR TYPES & DOOR  
SCHEDULE

Phase: B-3 FINAL DESIGN

Date: 03/31/2022

Designed: J. PERRY

Drawn: J. McKinney

Checked: B. Hendon

Drawing No.:

A-610