





WINDMILL CORP  
WINDMILL

# THREE PHASE

TYPE SPECIAL

FRAME 6

NO. 215148

H.P. 20

CODE T

R.P.M. 1500

55

VOLTS AMPS. CYCLE

220 54 60

440 27

313

220 44

## STAR CONNECTED







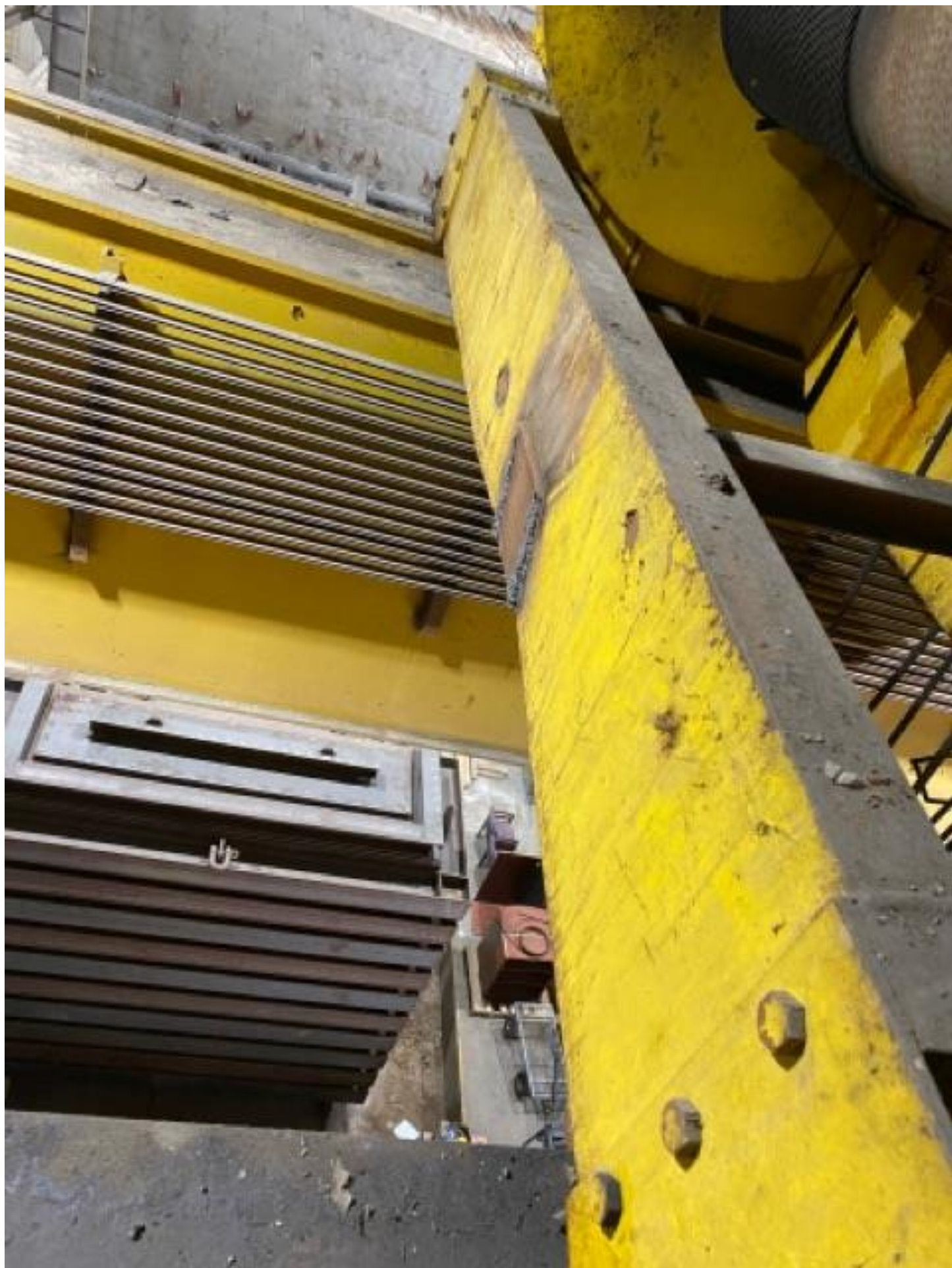




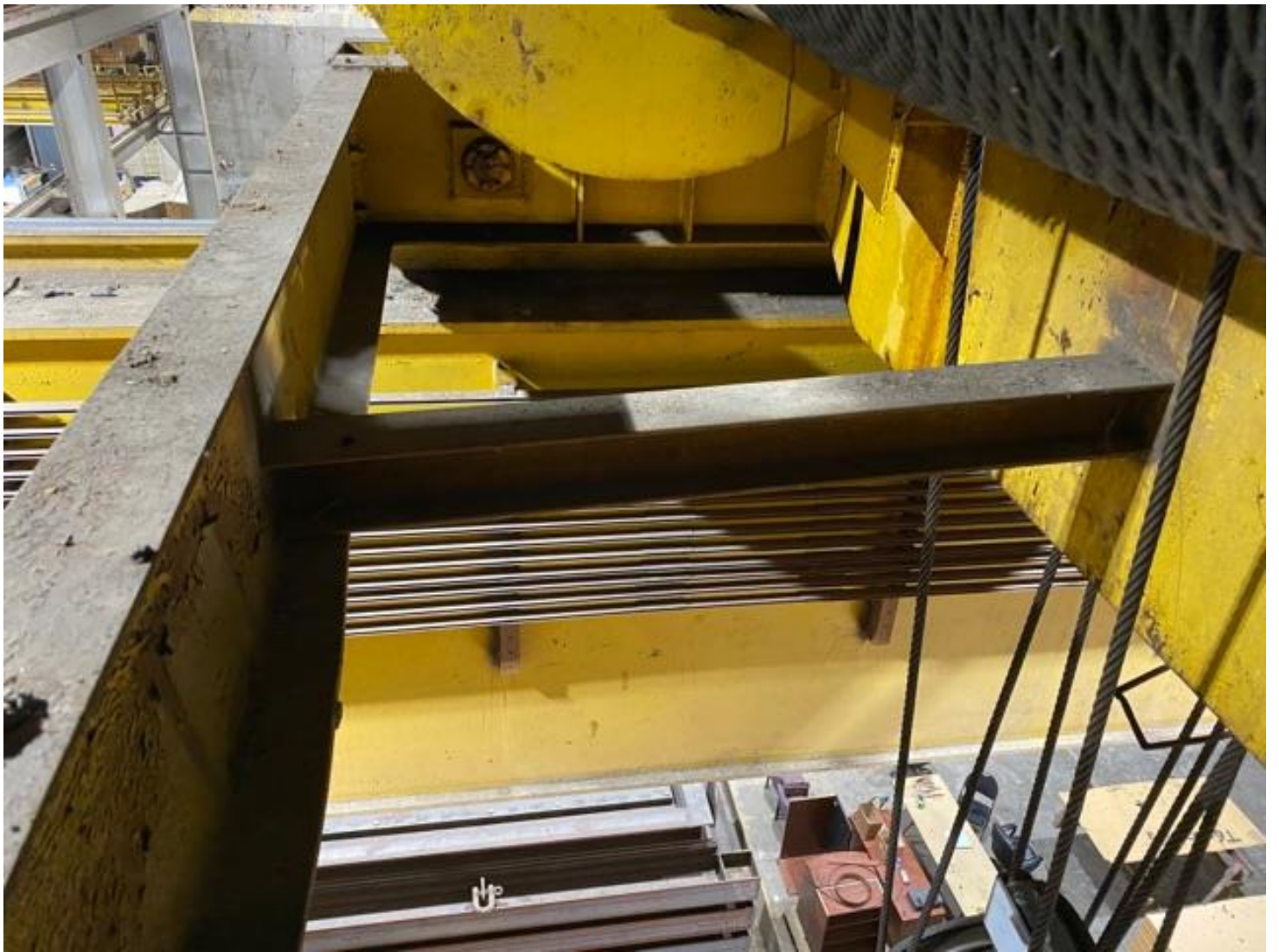






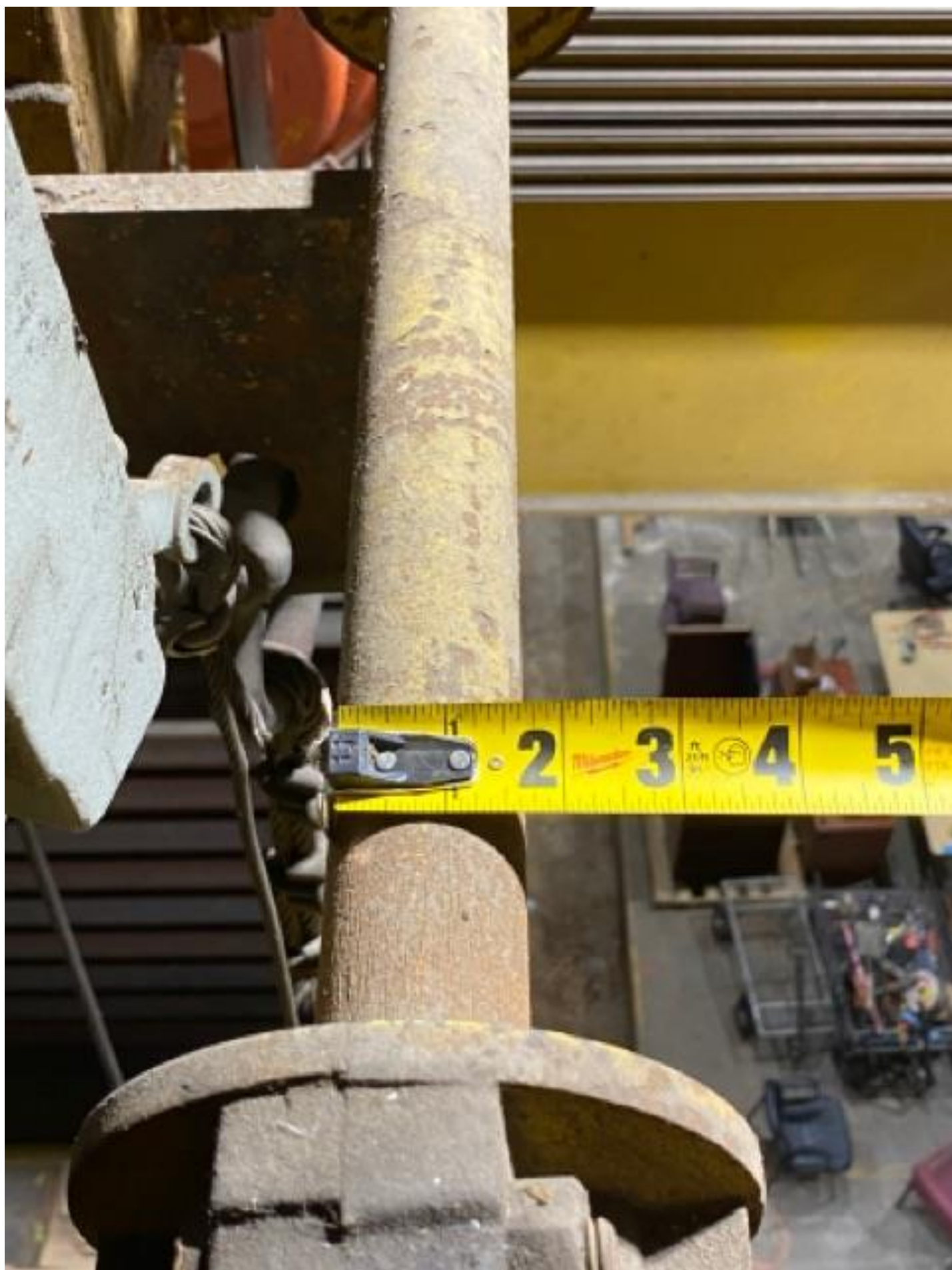






















**WINSMITH**  
**SPEED REDUCERS**



**DIFFERENTIAL SPEED REDUCER**

**PATENTED**

**WE RECOMMEND**

**MOBIL COMPOUND BE**

**A SOCONY MOBIL PRODUCT OR EQUAL**

**TEMPS. BELOW -40°F — MOBIL COMPOUND AA**

**TEMPS. ABOVE 150°F — MOBIL COMPOUND FF**

**SIZE**

**6 & H**

**SER.  
NO.**

**2 2 5 1 0 3**

**RATIO**

**20**

**WINSMITH, INC.**

**BRIDGEVILLE, BERK COUNTY, N.Y.**

