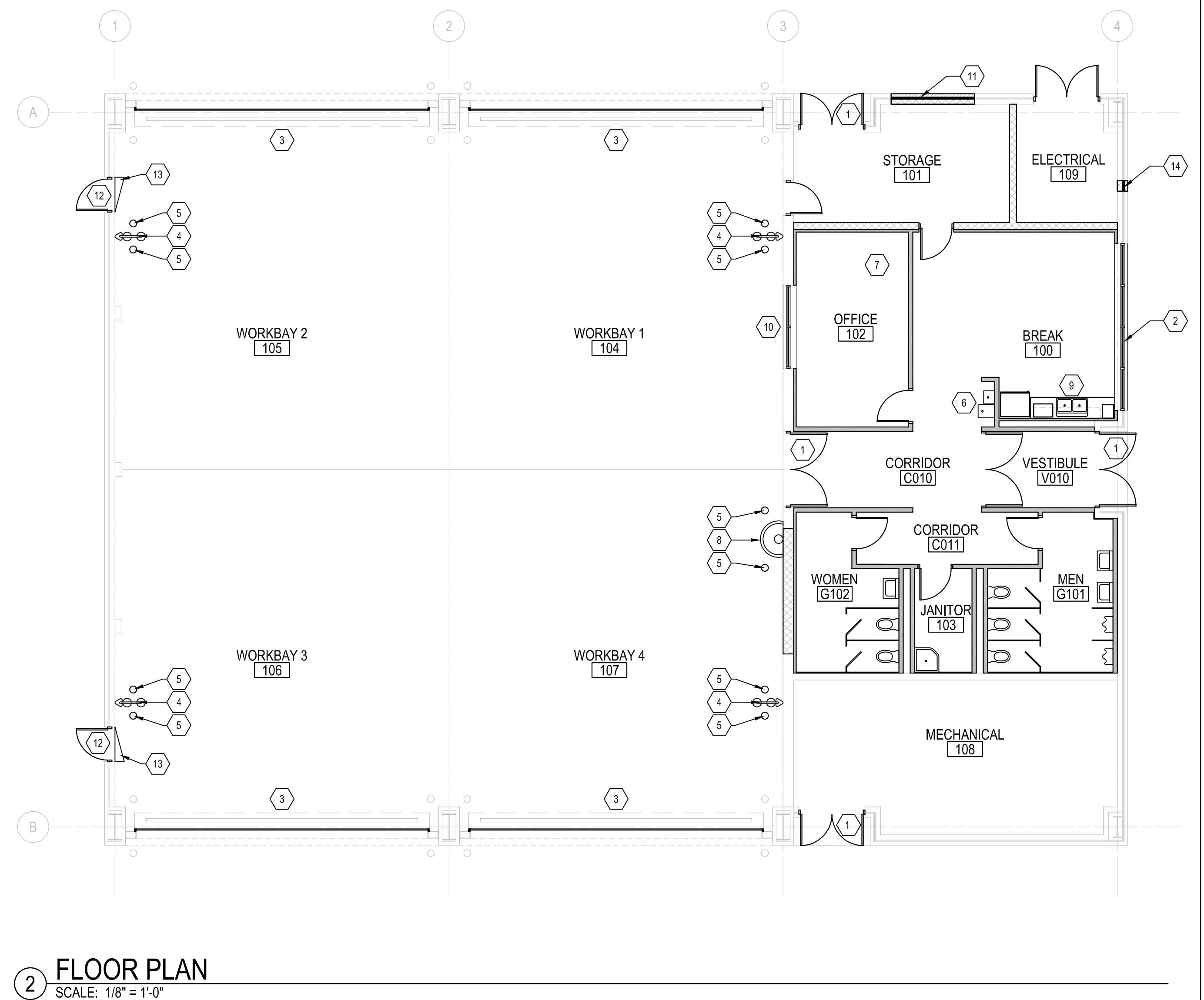
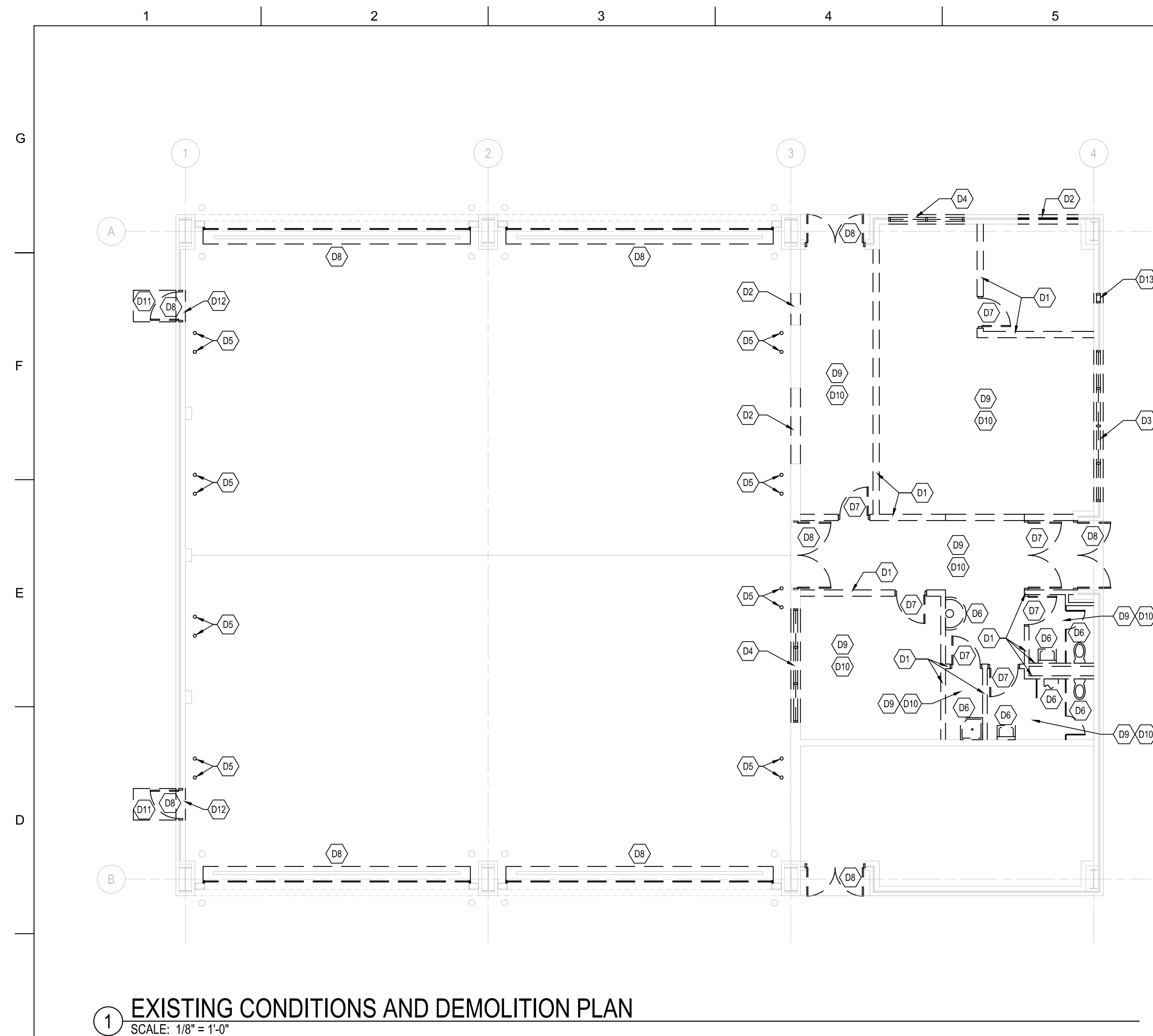



9

ARIMS: 200A Disposition: Maintain for 15 yrs after construction





B	LEGEND		DEMOLITION PLAN KEYNOTES		FLOOR PLAN KEYNOTES		GENERAL NOTES	
	<div><div><div>=====</div><div>ITEM TO BE REMOVED</div></div><div><div>=====</div><div>METAL STUD PARTITION</div></div><div><div>=====</div><div>CMU PARTITION</div></div></div>	<div><div>=====</div><div>EXISTING ITEM TO REMAIN</div></div> <div><div></div><div>WALL MOUNTED LAVATORY</div></div> <div><div></div><div>WALL MOUNTED WATER CLOSET</div></div>	<div><div></div><div>REMOVE EXISTING WALL IN ITS ENTIRETY</div></div> <div><div></div><div>REMOVE PORTION OF EXISTING WALL FOR NEW OPENING</div></div> <div><div></div><div>REMOVE EXISTING WINDOW IN ITS ENTIRETY, PREPARE FOR NEW WINDOW</div></div> <div><div></div><div>REMOVE EXISTING WINDOW IN ITS ENTIRETY</div></div> <div><div></div><div>REMOVE EXISTING BOLLARD IN ITS ENTIRETY</div></div> <div><div></div><div>REMOVE EXISTING FIXTURE IN ITS ENTIRETY</div></div> <div><div></div><div>REMOVE EXISTING DOOR/FRAME/HARDWARE IN ITS ENTIRETY</div></div> <div><div></div><div>REMOVE EXISTING DOOR, FRAME, AND HARDWARE IN ITS ENTIRETY, PREPARE FOR NEW DOOR, FRAME, AND HARDWARE</div></div> <div><div></div><div>REMOVE EXISTING CEILING IN ITS ENTIRETY</div></div> <div><div></div><div>REMOVE EXISTING FLOOR FINISH IN ITS ENTIRETY</div></div> <div><div></div><div>REMOVE EXISTING CONCRETE STOOP IN ITS ENTIRETY</div></div> <div><div></div><div>REMOVE EXISTING CONCRETE FOUNDATION WALL WITHIN DOORWAY SO THAT THE THRESHOLD IS FLUSH AT THE HIGH SIDE OF THE EXISTING FLOOR SLOPE</div></div> <div><div></div><div>REMOVE EXISTING EXHAUST LOUVER IN ITS ENTIRETY</div></div>	<div><div></div><div>DOOR AND FRAME, SIZE TO MATCH EXISTING OPENING</div></div> <div><div></div><div>WINDOW, SIZE TO MATCH EXISTING OPENING</div></div> <div><div></div><div>OVERHEAD COILING DOOR, SIZE TO MATCH EXISTING OPENING</div></div> <div><div></div><div>EMERGENCY EYEWASH/SHOWER</div></div> <div><div></div><div>8" CONCRETE FILLED METAL BOLLARD, PAINTED</div></div> <div><div></div><div>DUAL HEIGHT ELECTRIC WATER COOLER WITH BOTTLE FILLER</div></div> <div><div></div><div>TELECOM CABINET</div></div> <div><div></div><div>SEMI-CIRCULAR FOOT-ACTIVATED WASH BASIN</div></div> <div><div></div><div>8 LINEAR FEET COUNTERTOP, BASE CABINETS, AND WALL CABINETS, WITH 2-BOWL STAINLESS UNDERMOUNT SINK</div></div> <div><div></div><div>VIEW WINDOW FROM OFFICE TO WORKBAYS, 8'-0" WIDE</div></div> <div><div></div><div>BLOCK IN EXISTING OPENING WITH CMU BACKUP, INSULATION, AND FACE BRICK TO MATCH EXISTING</div></div> <div><div></div><div>DOOR, FRAME, AND TRANSOM WINDOW</div></div> <div><div></div><div>FEATHER FLOOR SLAB SO THAT THERE IS NO GREATER THAN A 1/2-INCH VERTICAL DIFFERENCE AT DOOR THRESHOLD</div></div> <div><div></div><div>PATCH BRICK AT REMOVED EXHAUST LOUVER</div></div>	<div><div>1. SEE RFP SCOPE OF WORK FOR WORK TO BE PERFORMED BUT NOT SHOWN ON THIS CONCEPTUAL PLAN</div><div>2. SEE I-DRAWINGS FOR CONTRACTOR-PROVIDED EQUIPMENT</div><div>3. SEE I-DRAWINGS FOR CONTRACTOR-PROVIDED FINISHES</div></div>			
							NORTH ARROW / GRAPHIC SCALE	
A	<div><div></div><div>TOILET PARTITION</div></div> <div><div></div><div>DOOR/FRAME/HARDWARE</div></div>	<div><div></div><div>WALL MOUNTED URINAL</div></div> <div><div></div><div>MOP SINK</div></div>				<div><div></div><div>PLAN NORTH</div></div> <div><div></div><div>16' 8' 0' 16'</div><div>SCALE: 1/8"=1'-0"</div><div>IF PLOTTED TO 22" x 34"</div></div>		
<div><div>JOINT BASE MAGUIRE-DICKLAKEHURST MAINT. REPAIR, VEHICLE MAINTENANCE SHOP - TRANSIENT (BLDG 502)</div><div>P2# 501881</div><div>EXISTING CONDITIONS AND DEMOLITION PLAN AND FLOOR PLAN</div><div>SHEET ID</div><div>A-100</div></div>								

[illegible]

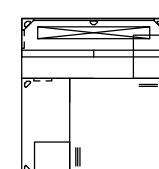
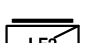
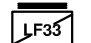








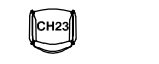



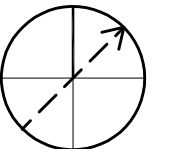

600 SOUTH OF EMBURY LOUISVILLE DISTRICT	8 JULY 2022
MICHAEL BAKER INTERNATIONAL 100 ARSIDE DRIVE MOON TOWNSHIP PA 15108	DRAWN BY: AJMERS
	CHECKED BY: T. HARRISON
	SUBMITTED BY: T. HARRISON
	CONTRACT NO.:
	SIZE: ANSI D

MAINT. REPAIR, VEHICLE MAINTENANCE SHOP - TRANSIENT (BLDG 5921)
P2# 501681

SHEET ID

-100



FURNITURE, FIXTURES AND EQUIPMENT LEGEND				ROOM FINISH SCHEDULE					GENERAL NOTES	
B		D5 FREESTANDING L-SHAPED DESK		LF2 36" 2H LATERAL FILE	LOCATION	WALL	FLOOR	BASE	CEILING	1. SEE RFP SCOPE OF WORK AND AR PAMPHLET FOR WORK TO BE PERFORMED BUT NOT SHOWN ON THIS CONCEPTUAL PLAN. 2. WORKBENCHES ARE NOT REQUIRED IN WORKBAYS. 3. FURNITURE SHOWN IN MECHANICAL ROOM IS REQUIRED PER AR PAMPHLET BUT LOCATION MAY VARY BASED ON EQUIPMENT LAYOUT. 4. CORNER GUARDS ON ALL OUTSIDE CORNERS WITHIN CORRIDORS AND BREAK ROOM. 5. FURNITURE IS GFGI, U.N.O.
				LF33 30" 3H LATERAL FILE	VESTIBULE	PAINT	LVT	RUBBER	CEILING TILE	
					CORRIDOR	PAINT	LVT	RUBBER	CEILING TILE	
		TS36 36" X 36" PLASTIC LAMINATE TABLE		IS1 24" X 48" X 87"H INDUSTRIAL SHELVING, CFCI	WOMEN	PAINT/PORC. TILE	PORC. TILE	PORC. TILE	GYP/PTD	
					JAN	PAINT/FRP PANEL	PORC. TILE	PORC. TILE	GYP/PTD	
					MEN	PAINT/PORC. TILE	PORC. TILE	PORC. TILE	GYP/PTD	
				BB1 MEDIUM BULLETIN BOARD, CFCI	BREAK AREA	PAINT	LVT	RUBBER	CEILING TILE	
		TF255 30" X 60" FOLDING TABLE		BB2 LARGE BULLETIN BOARD, CFCI	OFFICE	PAINT	LVT	RUBBER	CEILING TILE	
					STORAGE	PAINT	SEALED CONC	SEALANT	CEILING TILE	
					WORKBAY 1	PAINT	SEALED CONC	SEALANT	EXPOSED/ PTD	
A		CH1 MESH BACK/ UPH SEAT TASK CHAIR		MB1 MARKER BOARD, CFCI	WORKBAY 2	PAINT	SEALED CONC	SEALANT	EXPOSED/ PTD	NORTH ARROW / GRAPHIC SCALE
		CH12 UPH BACK/ UPH SEAT TASK CHAIR			WORKBAY 3	PAINT	SEALED CONC	SEALANT	EXPOSED/ PTD	
		CH23 UPHOLSTERED GUEST CHAIR ON CASTERS		WM1 SURFACE ENTRANCE WALK OFF MAT, CFCI	WORKBAY 4	PAINT	SEALED CONC	SEALANT	EXPOSED/ PTD	
		CK2 PLASTIC STACK CHAIR W/O ARMS		FREE STANDING PRINTER	MECH/ELECT	PAINT	SEALED CONC	SEALANT	EXPOSED/ PTD	
					1. CORRIDORS AND VESTIBULE TO HAVE 4" CHAIR RAIL, 3" CORNER GUARDS AND 8" CONTINUOUS CRASH RAIL. CRASH RAILS ARE MTD. APPROX. 10" O.C. AFF.					
<div><div><div>PLAN NORTH</div></div><div><div>16'8'016'</div><div>SCALE: 1/8"=1'-0" IF PLOTTED TO 22" x 34"</div></div></div>										