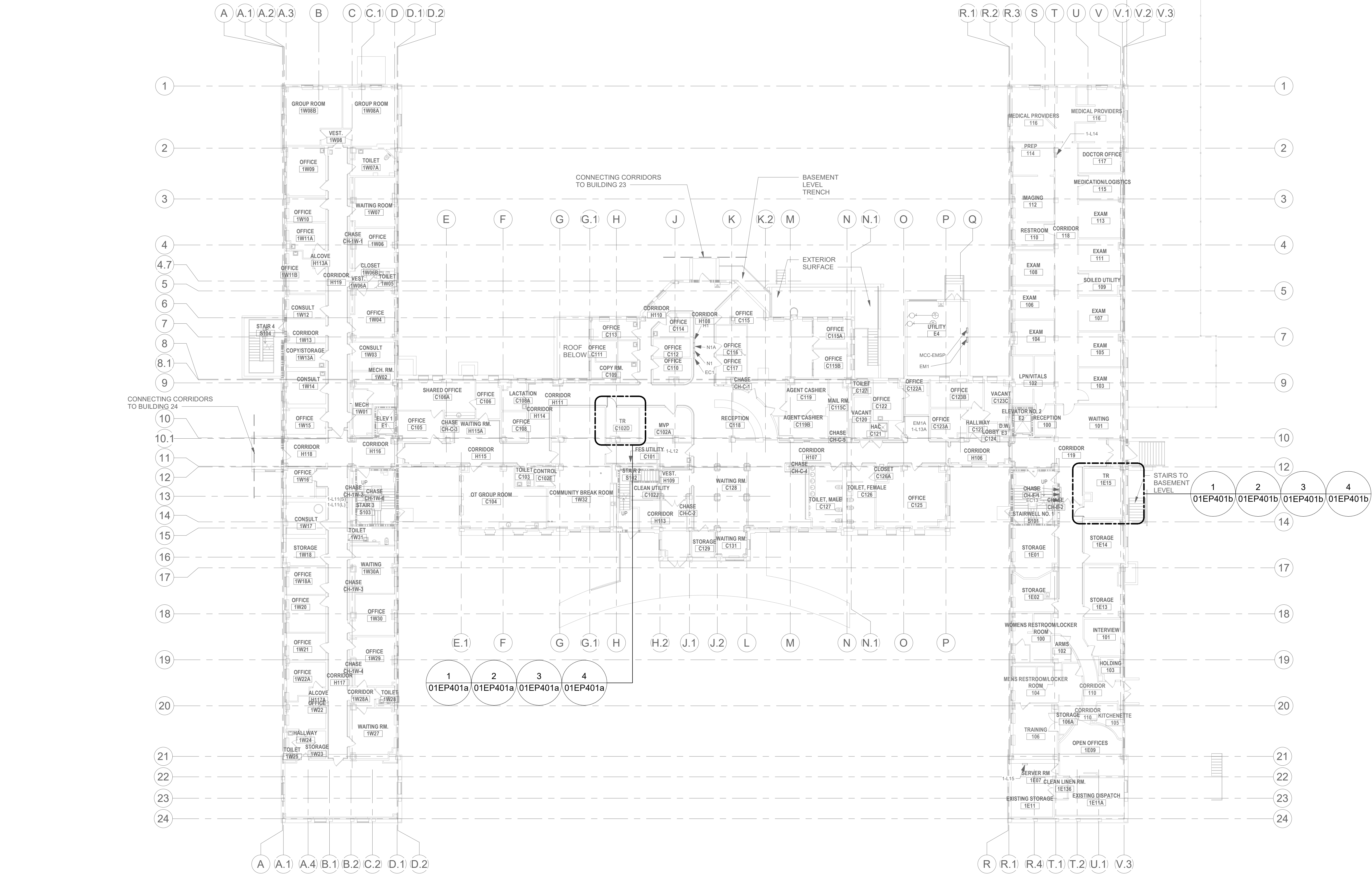
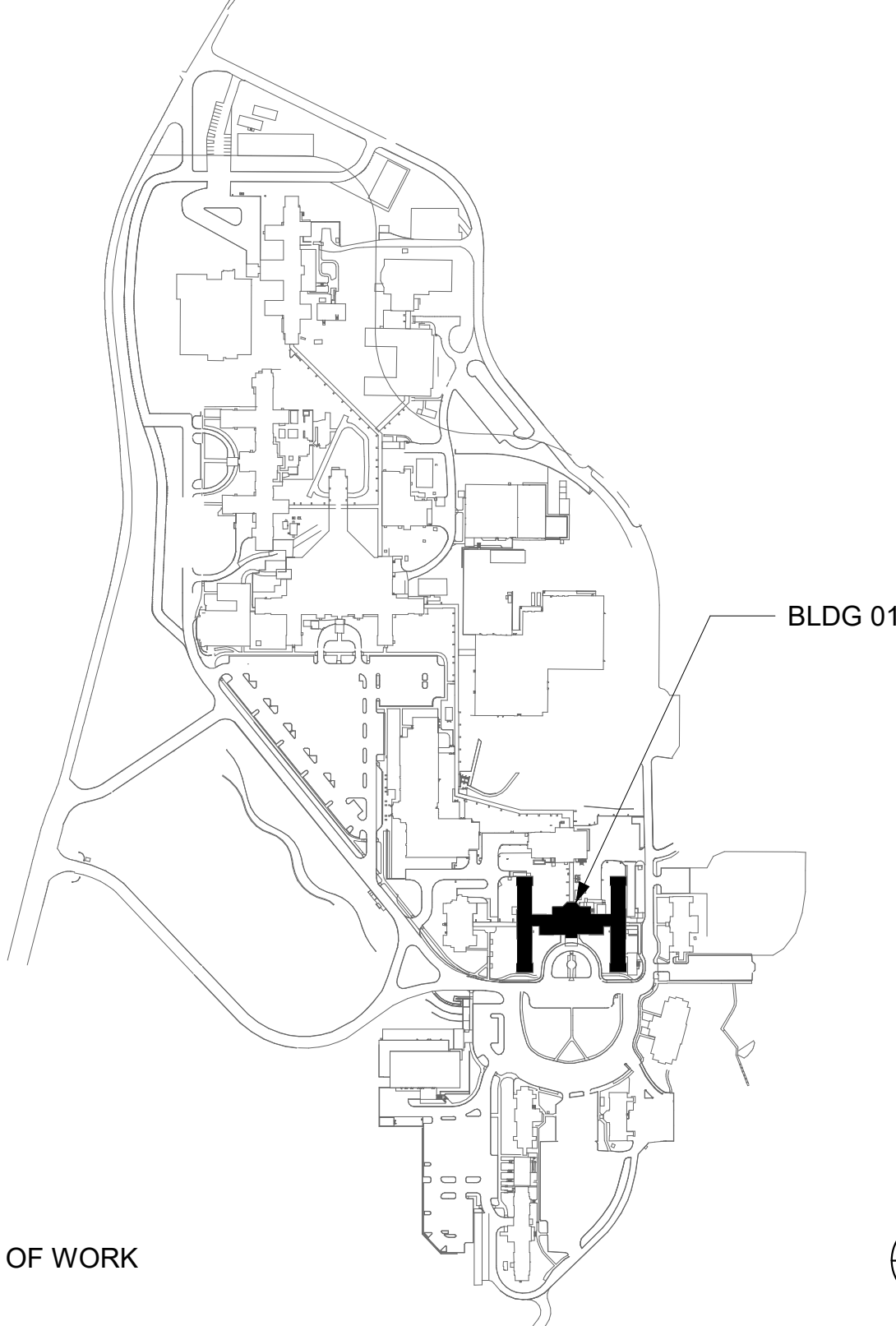


GENERAL NOTES

- ALL EXISTING EQUIPMENT MAY NOT BE SHOWN FOR CLARITY. CONTRACTOR SHALL FIELD VERIFY ALL POWER, LIGHTING AND ASSOCIATED CIRCUITRY AS REQUIRED. ALL RACEWAYS AND CONDUCTORS ASSOCIATED WITH EQUIPMENT TO BE DEMOLISHED SHALL BE DEMOLISHED BACK TO THEIR SOURCE, UNLESS OTHERWISE NOTED.
- CONTRACTOR SHALL DEMOLISH ALL ELECTRICAL EQUIPMENT, CONDUCTORS, AND RACEWAYS ASSOCIATED WITH WALLS BEING REMOVED AND IN ALL LOCATIONS WHERE JUNCTION BOXES WILL NOT REMAIN ACCESSIBLE AFTER INSTALLATION OF MILLWORK, UNLESS OTHERWISE NOTED.
- PROTECT ALL EXISTING WORK FROM DAMAGE DURING CONSTRUCTION. ANY DAMAGED MATERIALS, SYSTEMS, COMPONENTS, FINISHES BE LIKE, SHALL BE REPAIRED OR REPLACED AT THE EXPENSE OF THE CONTRACTOR TO THE ACCEPTANCE OF THE OWNER.
- CONTRACTOR SHALL COORDINATE NORMAL/ESSENTIAL ELECTRICAL SYSTEM SHUTDOWNS AND PHASING WITH THE VA PRIOR TO PERFORMING REQUIRED EQUIPMENT UPGRADES. CONTRACTOR TO PROVIDE BACKUP EMERGENCY POWER AND DETERMINE TIE-IN/CONNECTION PLAN WITH EXISTING EQUIPMENT. POWER TO ALL EXISTING ESSENTIAL EQUIPMENT CANNOT BE INTERRUPTED AND SHALL REMAIN ACTIVE DURING CONSTRUCTION. BACKUP POWER AND TIE-IN SHALL CONFORM WITH VA STANDARDS.
- SEAL ALL INTERIOR WALL AND CEILING PENETRATIONS TO MATCH EXISTING FIRE RATING OR NEW FIRE RATING, IF REQUIRED. COORDINATE WITH ARCHITECTURAL DRAWINGS AS REQUIRED.
- REFERENCE CORRESPONDING ONE-LINE DIAGRAM FOR ADDITIONAL INFORMATION.
- CONTRACTOR SHALL PROVIDE UPDATED CIRCUIT PANEL DIRECTORIES FOR ALL PANELS THAT CONTAIN CIRCUITS IMPACTED BY THIS PROJECT.
- CONTRACTOR SHALL BE RESPONSIBLE FOR RELOCATING FURNITURE, INCLUDING TRANSPORTATION, FOR ALL WORK TO DESIRED VA STORAGE LOCATION. COORDINATE WITH VA AS REQUIRED.

KEY NOTES

KEY PLAN



1 BLDG 01 - FLOOR 1 - ELECTRICAL PLAN
1/16" = 1'-0"

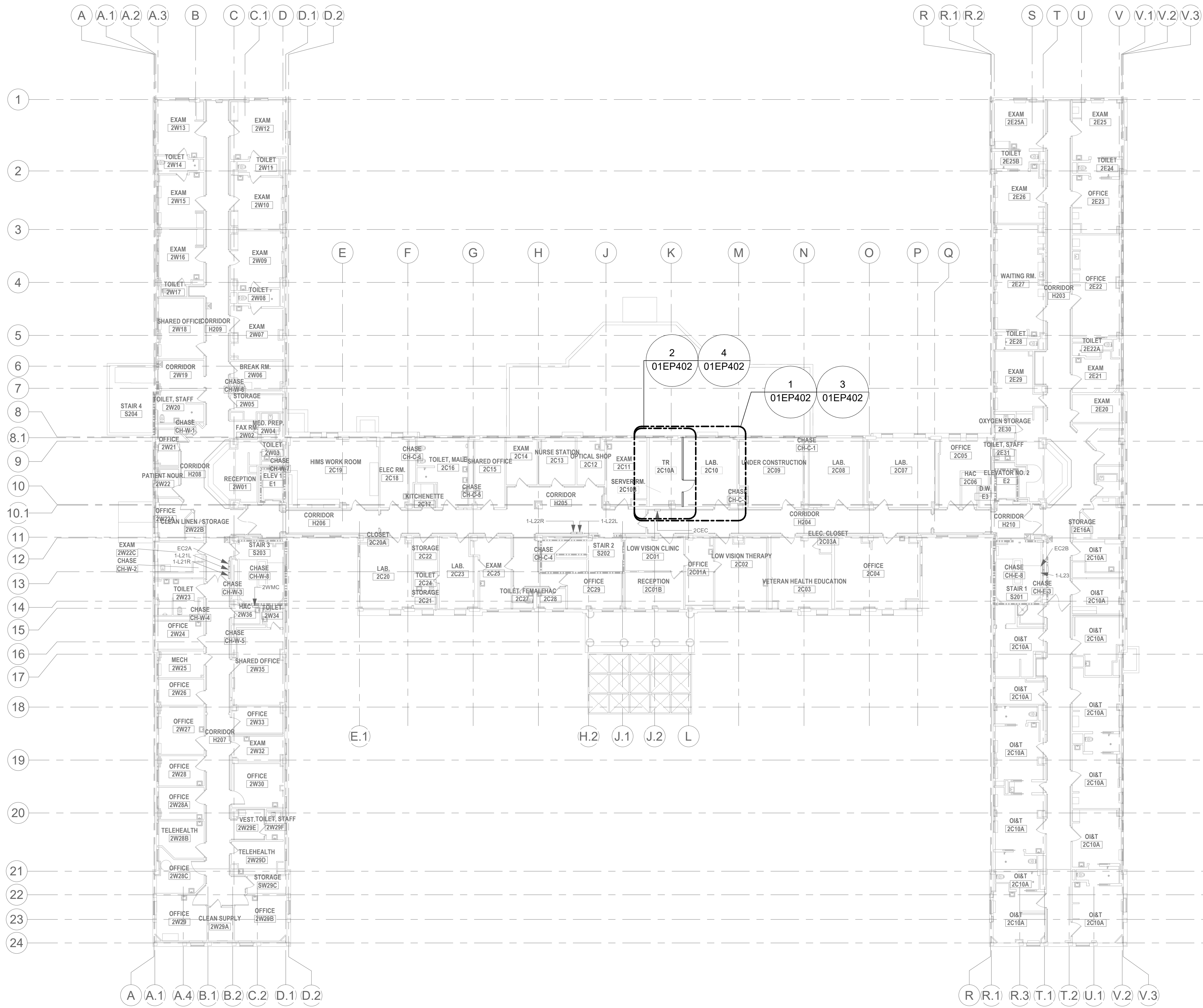
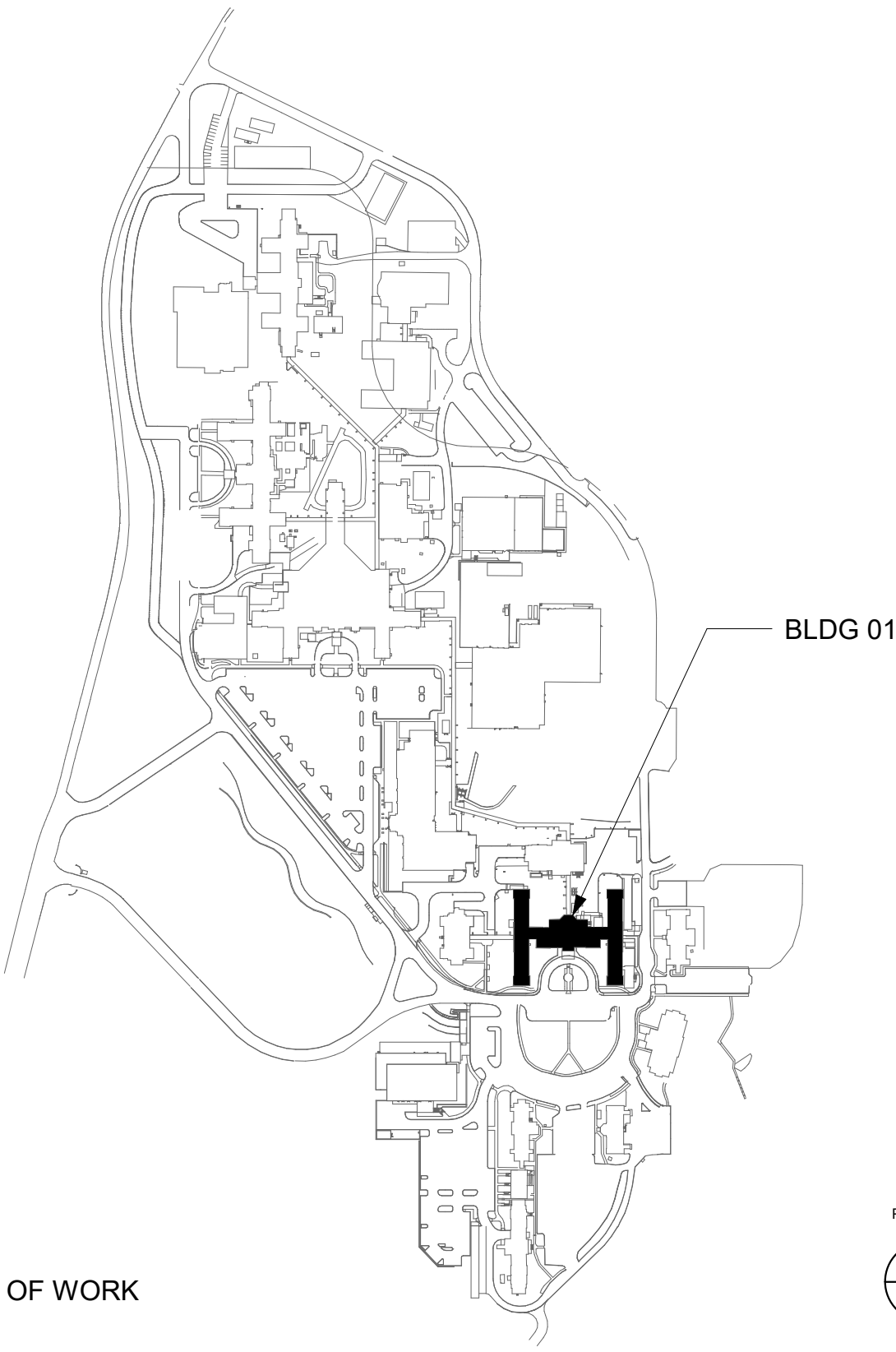
CONSULTANT		ARCHITECT/ENGINEER OF RECORD		STAMP		Office of Construction and Facilities Management		Drawing Title		Phase		Project Title		Project Number	
								BLDG 01 - FLOOR 1 - ELECTRICAL PLAN		CONSTRUCTION DOCUMENTS		EHRM INFRASTRUCTURE UPGRADES		657-21-701JB	
								Approved:		FULLY SPRINKLERED		Location		Building Number	
												ST. LOUIS VA MEDICAL CENTER - JEFFERSON BARRACKS MO		01	
												Issue Date		Drawing Number	
												03/31/2022		01EP101	
												Checked		Drawn	
												LRL/WM		LLT/JPS	
														132 OF 435	

GENERAL NOTES

- ALL EXISTING EQUIPMENT MAY NOT BE SHOWN FOR CLARITY. CONTRACTOR SHALL FIELD VERIFY ALL POWER, LIGHTING AND ASSOCIATED CIRCUITRY AS REQUIRED. ALL RACEWAYS AND CONDUCTORS ASSOCIATED WITH EQUIPMENT TO BE DEMOLISHED SHALL BE DEMOLISHED BACK TO THEIR SOURCE, UNLESS OTHERWISE NOTED.
- CONTRACTOR SHALL DEMOLISH ALL ELECTRICAL EQUIPMENT, CONDUCTORS, AND RACEWAYS ASSOCIATED WITH WALLS BEING REMOVED AND IN ALL LOCATIONS WHERE JUNCTION BOXES WILL NOT REMAIN ACCESSIBLE AFTER INSTALLATION OF MILLWORK, UNLESS OTHERWISE NOTED.
- PROTECT ALL EXISTING WORK FROM DAMAGE DURING CONSTRUCTION. ANY DAMAGED MATERIALS, SYSTEMS, COMPONENTS, FINISHES BE LIKE, SHALL BE REPAIRED OR REPLACED AT THE EXPENSE OF THE CONTRACTOR TO THE ACCEPTANCE OF THE OWNER.
- CONTRACTOR SHALL COORDINATE NORMAL/ESSENTIAL ELECTRICAL SYSTEM SHUTDOWNS AND PHASING WITH THE VA PRIOR TO PERFORMING REQUIRED EQUIPMENT UPGRADES. CONTRACTOR TO PROVIDE BACKUP EMERGENCY POWER AND DETERMINE TIE-IN/CONNECTION PLAN WITH EXISTING EQUIPMENT. POWER TO ALL EXISTING ESSENTIAL EQUIPMENT CANNOT BE INTERRUPTED AND SHALL REMAIN ACTIVE DURING CONSTRUCTION. BACKUP POWER AND TIE-IN SHALL CONFORM WITH VA STANDARDS.
- SEAL ALL INTERIOR WALL AND CEILING PENETRATIONS TO MATCH EXISTING FIRE RATING OR NEW FIRE RATING, IF REQUIRED. COORDINATE WITH ARCHITECTURAL DRAWINGS AS REQUIRED.
- REFERENCE CORRESPONDING ONE-LINE DIAGRAM FOR ADDITIONAL INFORMATION.
- CONTRACTOR SHALL PROVIDE UPDATED CIRCUIT PANEL DIRECTORIES FOR ALL PANELS THAT CONTAIN CIRCUITS IMPACTED BY THIS PROJECT.
- CONTRACTOR SHALL BE RESPONSIBLE FOR RELOCATING FURNITURE, INCLUDING TRANSPORTATION, FOR ALL WORK TO DESIRED VA STORAGE LOCATION. COORDINATE WITH VA AS REQUIRED.

KEY NOTES

KEY PLAN



1 BLDG 01 - FLOOR 2 - ELECTRICAL PLAN
1/16" = 1'-0"

CONSULTANT

ARCHITECT/ENGINEER OF RECORD

STAMP

Office of
Construction
and Facilities
Management

U.S. Department
of Veterans Affairs

Drawing Title
BLDG 01 - FLOOR 2 - ELECTRICAL PLAN

Phase
CONSTRUCTION
DOCUMENTS

Project Title
EHRM INFRASTRUCTURE
UPGRADES

Project Number
657-21-701JB
Building Number
01

Location
ST. LOUIS VA MEDICAL CENTER - JEFFERSON
BARRACKS MO

Issue Date
03/31/2022

Checked
LRL/WM

Drawn
LLT/JPS

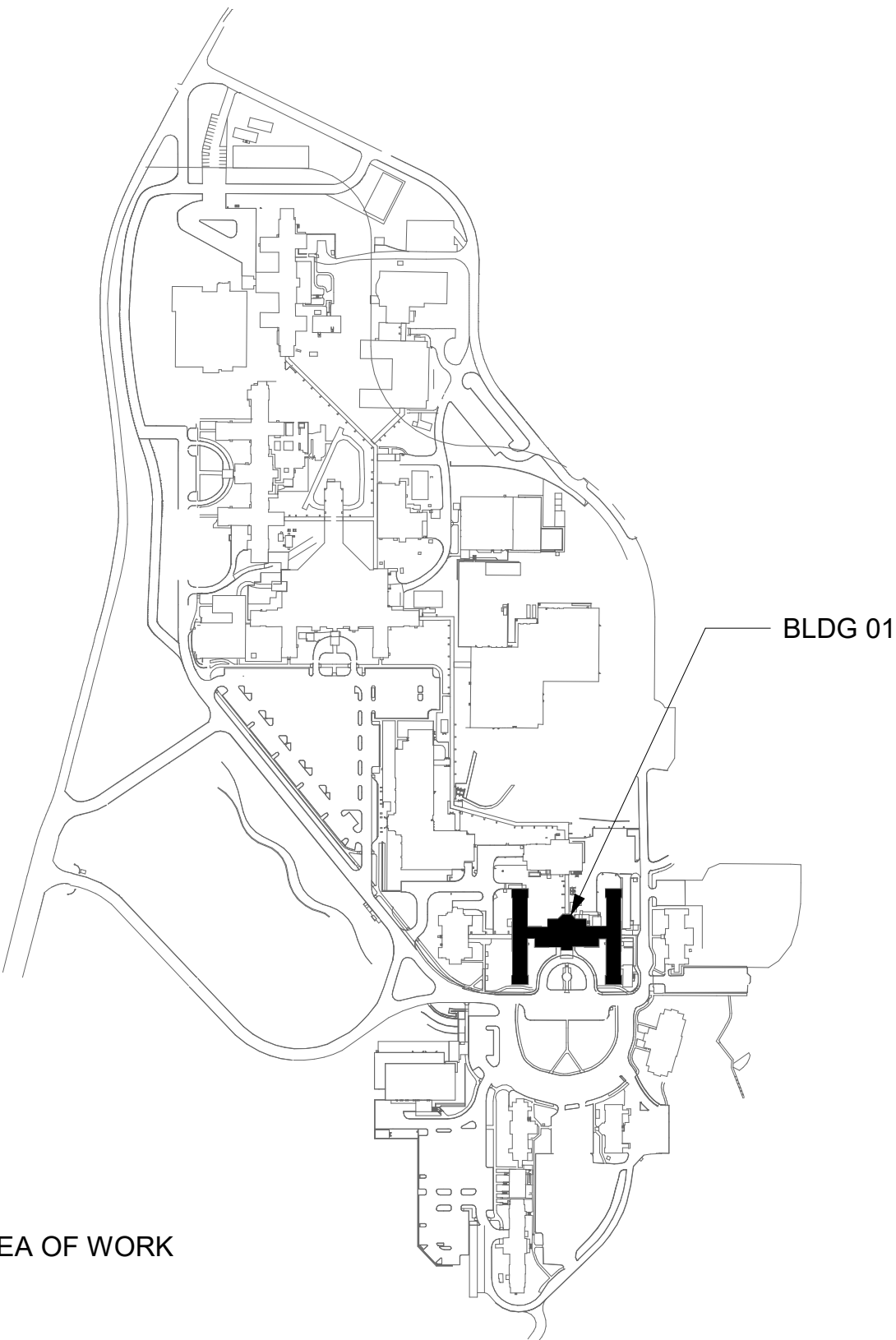
Drawing Number
01EP102
133 OF 435

GENERAL NOTES

- ALL EXISTING EQUIPMENT MAY NOT BE SHOWN FOR CLARITY. CONTRACTOR SHALL FIELD VERIFY ALL POWER, LIGHTING AND ASSOCIATED CIRCUITRY AS REQUIRED. ALL RACEWAYS AND CONDUCTORS ASSOCIATED WITH EQUIPMENT TO BE DEMOLISHED SHALL BE DEMOLISHED BACK TO THEIR SOURCE, UNLESS OTHERWISE NOTED.
- CONTRACTOR SHALL DEMOLISH ALL ELECTRICAL EQUIPMENT, CONDUCTORS, AND RACEWAYS ASSOCIATED WITH WALLS BEING REMOVED AND IN ALL LOCATIONS WHERE JUNCTION BOXES WILL NOT REMAIN ACCESSIBLE AFTER INSTALLATION OF MILLWORK, UNLESS OTHERWISE NOTED.
- PROTECT ALL EXISTING WORK FROM DAMAGE DURING CONSTRUCTION. ANY DAMAGED MATERIALS, SYSTEMS, COMPONENTS, FINISHES BE LIKE, SHALL BE REPAIRED OR REPLACED AT THE EXPENSE OF THE CONTRACTOR TO THE ACCEPTANCE OF THE OWNER.
- CONTRACTOR SHALL COORDINATE NORMAL/ESSENTIAL ELECTRICAL SYSTEM SHUTDOWNS AND PHASING WITH THE VA PRIOR TO PERFORMING REQUIRED EQUIPMENT UPGRADES. CONTRACTOR TO PROVIDE BACKUP EMERGENCY POWER AND DETERMINE TIE-IN/CONNECTION PLAN WITH EXISTING EQUIPMENT. POWER TO ALL EXISTING ESSENTIAL EQUIPMENT CANNOT BE INTERRUPTED AND SHALL REMAIN ACTIVE DURING CONSTRUCTION. BACKUP POWER AND TIE-IN SHALL CONFORM WITH VA STANDARDS.
- SEAL ALL INTERIOR WALL AND CEILING PENETRATIONS TO MATCH EXISTING FIRE RATING OR NEW FIRE RATING, IF REQUIRED. COORDINATE WITH ARCHITECTURAL DRAWINGS AS REQUIRED.
- REFERENCE CORRESPONDING ONE-LINE DIAGRAM FOR ADDITIONAL INFORMATION.
- CONTRACTOR SHALL PROVIDE UPDATED CIRCUIT PANEL DIRECTORIES FOR ALL PANELS THAT CONTAIN CIRCUITS IMPACTED BY THIS PROJECT.
- CONTRACTOR SHALL BE RESPONSIBLE FOR RELOCATING FURNITURE, INCLUDING TRANSPORTATION, FOR ALL WORK TO DESIRED VA STORAGE LOCATION. COORDINATE WITH VA AS REQUIRED.

KEY NOTES

KEY PLAN



1 BLDG 01 - FLOOR 3 - ELECTRICAL PLAN
1/16" = 1'-0"

CONSULTANT

ARCHITECT/ENGINEER OF RECORD

STAMP

Office of
Construction
and Facilities
Management

Drawing Title
BLDG 01 - FLOOR 3 - ELECTRICAL PLAN

Phase
CONSTRUCTION
DOCUMENTS

Project Title
EHRM INFRASTRUCTURE
UPGRADES

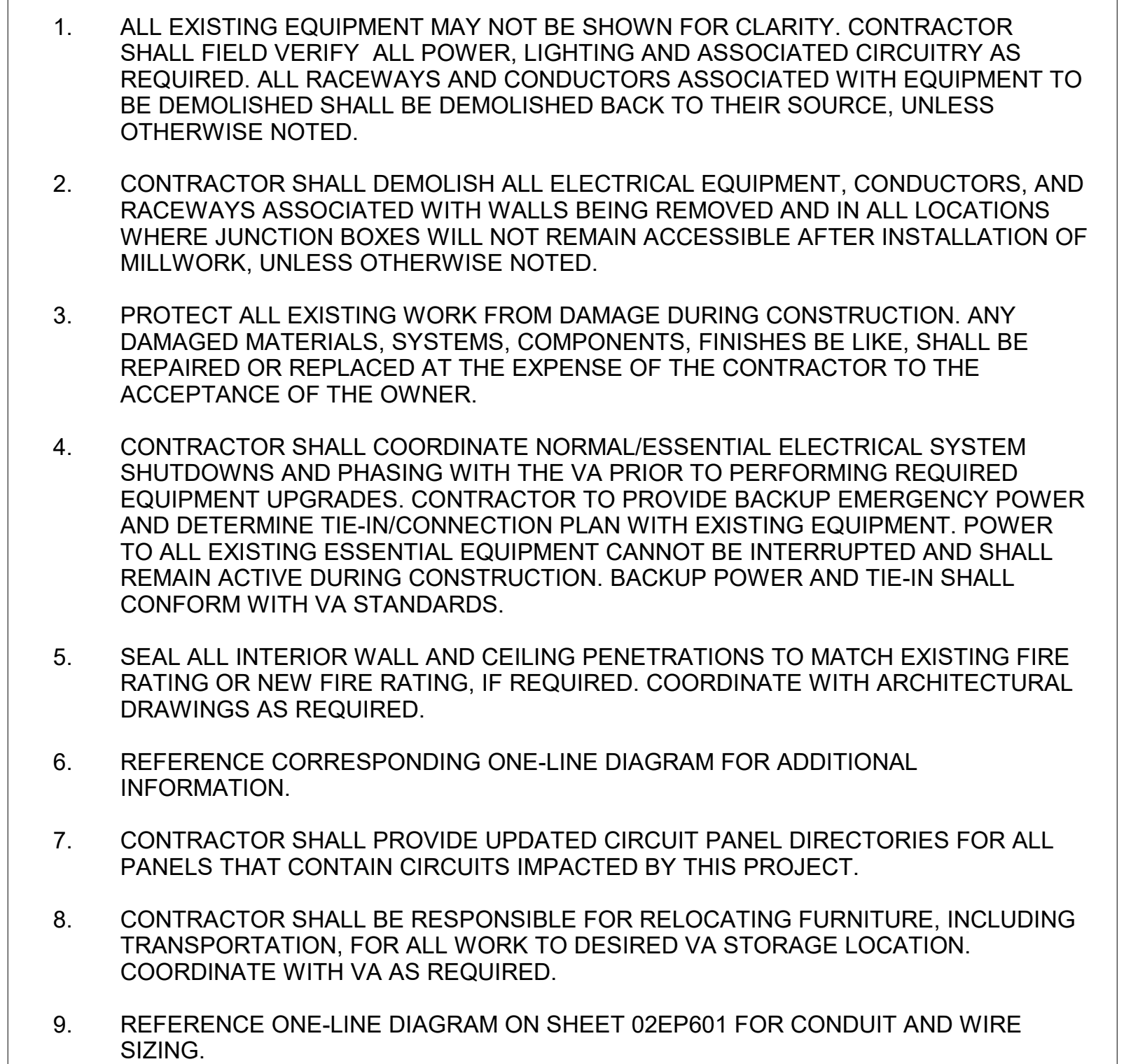
Project Number
657-21-701JB
Building Number
01

Location
ST. LOUIS VA MEDICAL CENTER - JEFFERSON
BARRACKS MO
Issue Date
03/31/2022

Checked
LRL/WM

Drawn
LLT/JPS

Drawing Number
01EP103
134 OF 435



1	EQUIPMENT TO BE ADDED. REFERENCE ONE-LINE DIAGRAM ON SHEET 02EP601 FOR ADDITIONAL INFORMATION.
2	EXISTING PANEL TO BE MODIFIED. REFERENCE ONE-LINE DIAGRAM ON SHEET 02EP601 FOR ADDITIONAL INFORMATION.

AREA OF WORK

BLDG 02

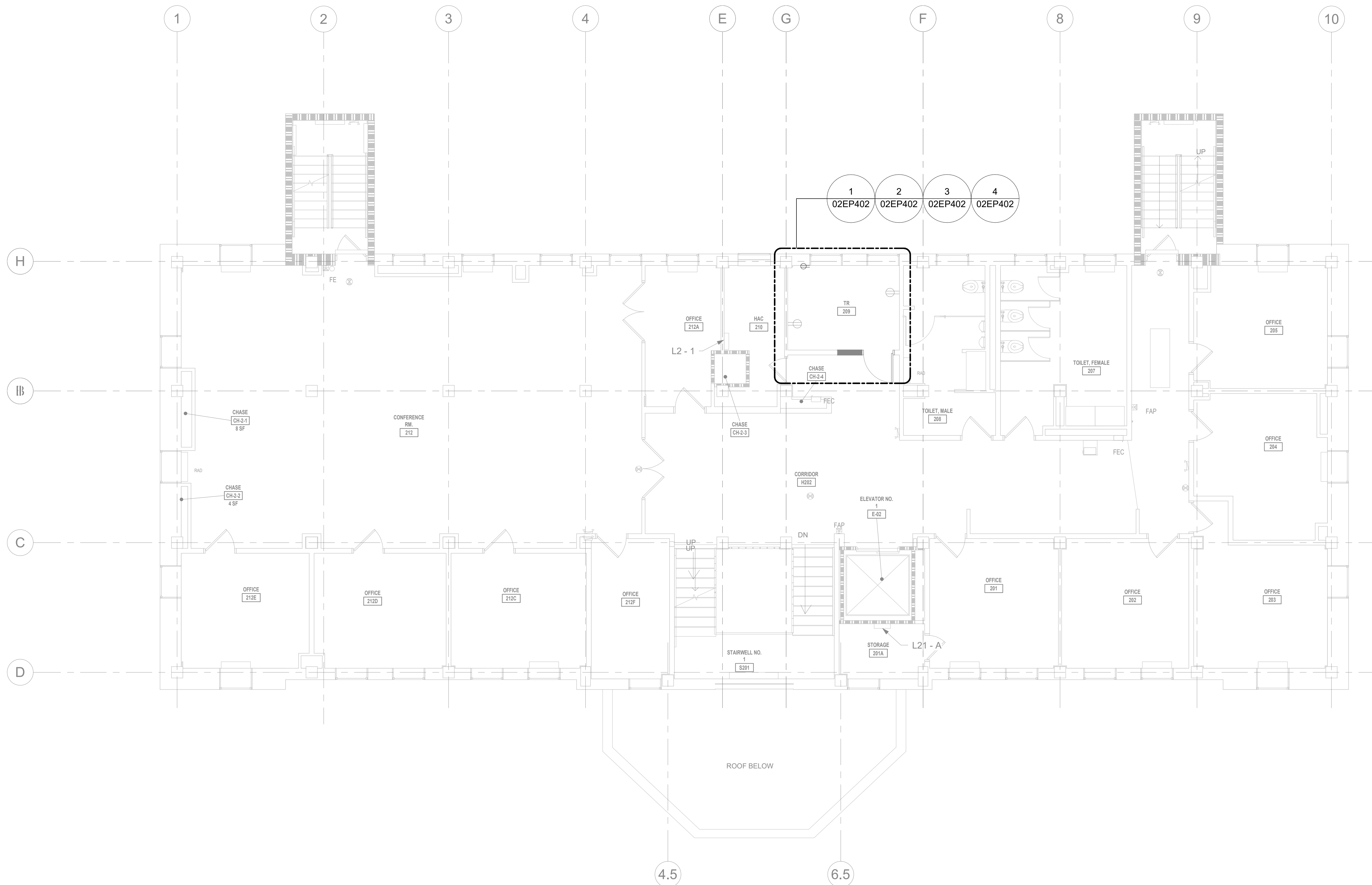
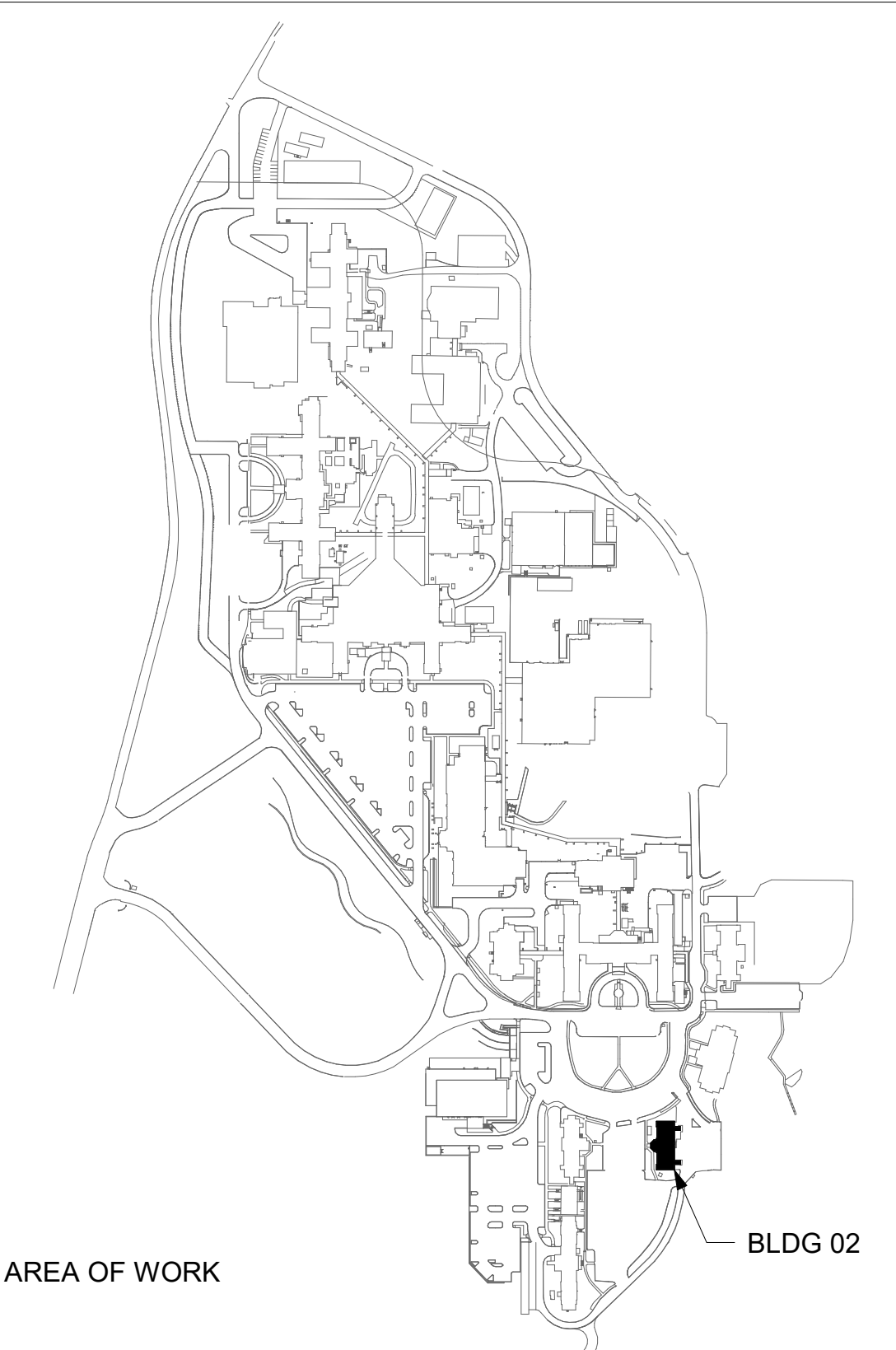
[illegible]




GENERAL NOTES

1. ALL EXISTING EQUIPMENT MAY NOT BE SHOWN FOR CLARITY. CONTRACTOR SHALL FIELD VERIFY ALL POWER, LIGHTING AND ASSOCIATED CIRCUITRY AS REQUIRED. ALL RACEWAYS AND CONDUCTORS ASSOCIATED WITH EQUIPMENT TO BE DEMOLISHED SHALL BE DEMOLISHED BACK TO THEIR SOURCE, UNLESS OTHERWISE NOTED.
2. CONTRACTOR SHALL DEMOLISH ALL ELECTRICAL EQUIPMENT, CONDUCTORS, AND RACEWAYS ASSOCIATED WITH WALLS BEING REMOVED AND IN ALL LOCATIONS WHERE JUNCTION BOXES WILL NOT REMAIN ACCESSIBLE AFTER INSTALLATION OF MILLWORK, UNLESS OTHERWISE NOTED.
3. PROTECT ALL EXISTING WORK FROM DAMAGE DURING CONSTRUCTION. ANY DAMAGED MATERIALS, SYSTEMS, COMPONENTS, FINISHES BE LIKE, SHALL BE REPAIRED OR REPLACED AT THE EXPENSE OF THE CONTRACTOR TO THE ACCEPTANCE OF THE OWNER.
4. CONTRACTOR SHALL COORDINATE NORMAL/ESSENTIAL ELECTRICAL SYSTEM SHUTDOWNS AND PHASING WITH THE VA PRIOR TO PERFORMING REQUIRED EQUIPMENT UPGRADES. CONTRACTOR TO PROVIDE BACKUP EMERGENCY POWER AND DETERMINE TIE-IN CONNECTION PLAN WITH EXISTING EQUIPMENT. POWER TO ALL EXISTING ESSENTIAL EQUIPMENT CANNOT BE INTERRUPTED AND SHALL REMAIN ACTIVE DURING CONSTRUCTION. BACKUP POWER AND TIE-IN SHALL CONFORM WITH VA STANDARDS.
5. SEAL ALL INTERIOR WALL AND CEILING PENETRATIONS TO MATCH EXISTING FIRE RATING OR NEW FIRE RATING, IF REQUIRED. COORDINATE WITH ARCHITECTURAL DRAWINGS AS REQUIRED.
6. REFERENCE CORRESPONDING ONE-LINE DIAGRAM FOR ADDITIONAL INFORMATION.
7. CONTRACTOR SHALL PROVIDE UPDATED CIRCUIT PANEL DIRECTORIES FOR ALL PANELS THAT CONTAIN CIRCUITS IMPACTED BY THIS PROJECT.
8. CONTRACTOR SHALL BE RESPONSIBLE FOR RELOCATING FURNITURE, INCLUDING TRANSPORTATION, FOR ALL WORK TO DESIRED VA STORAGE LOCATION. COORDINATE WITH VA AS REQUIRED.

KEY NOTES

KEY PLAN




BLDG 02 - FLOOR 2 - ELECTRICAL PLAN
 3/16" = 1'-0"
 
 PROJECT NORTH
 

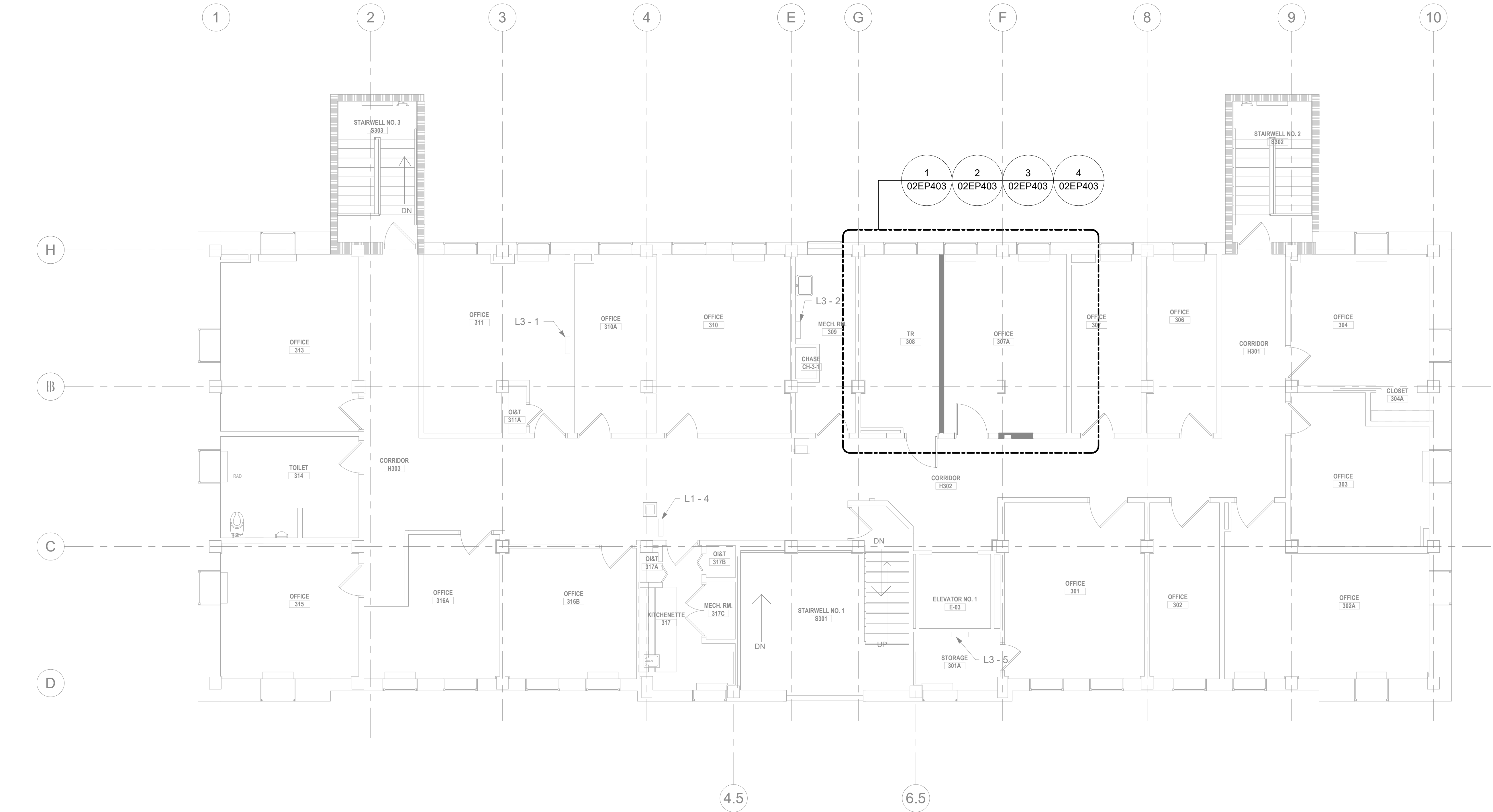
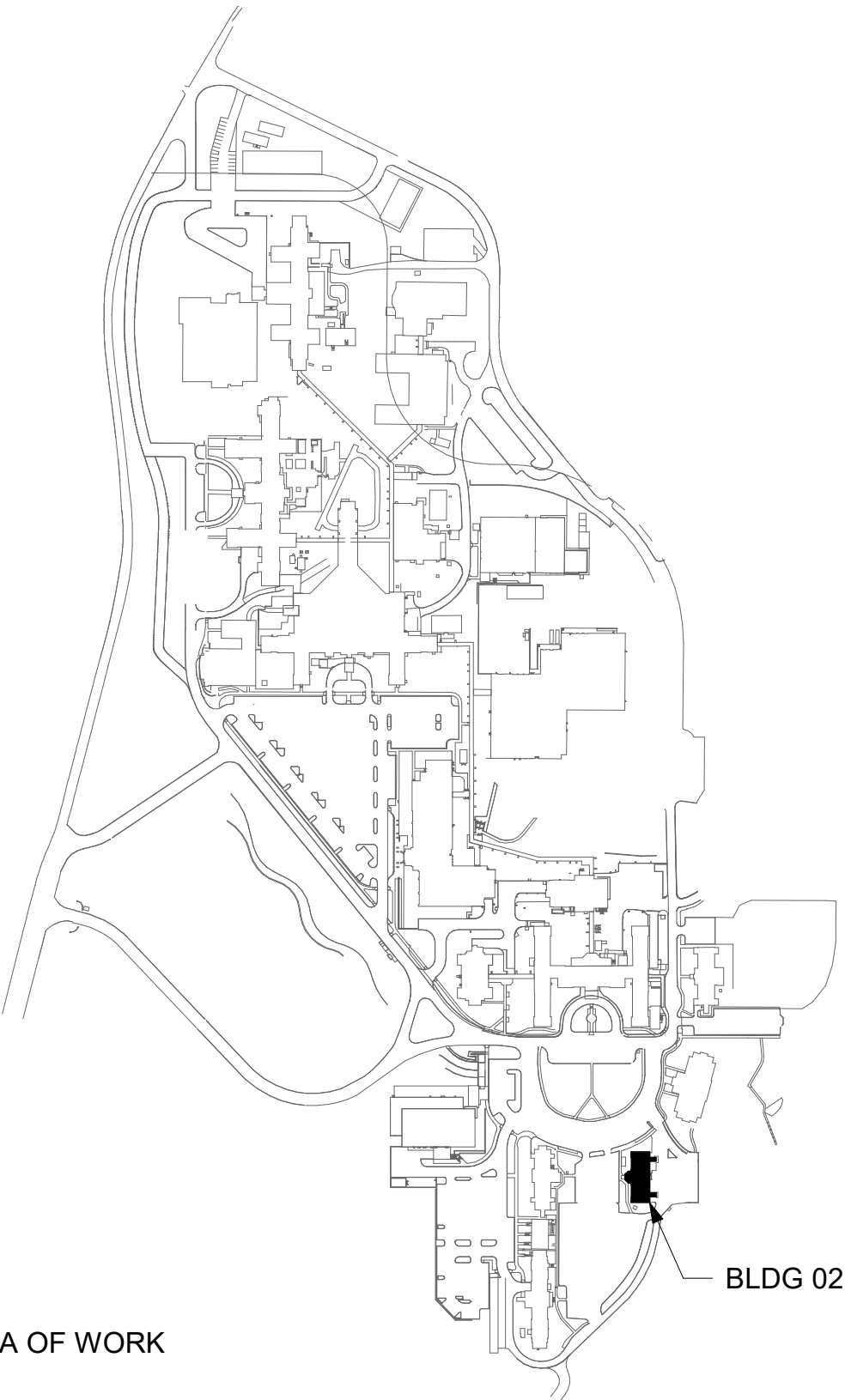
[illegible]

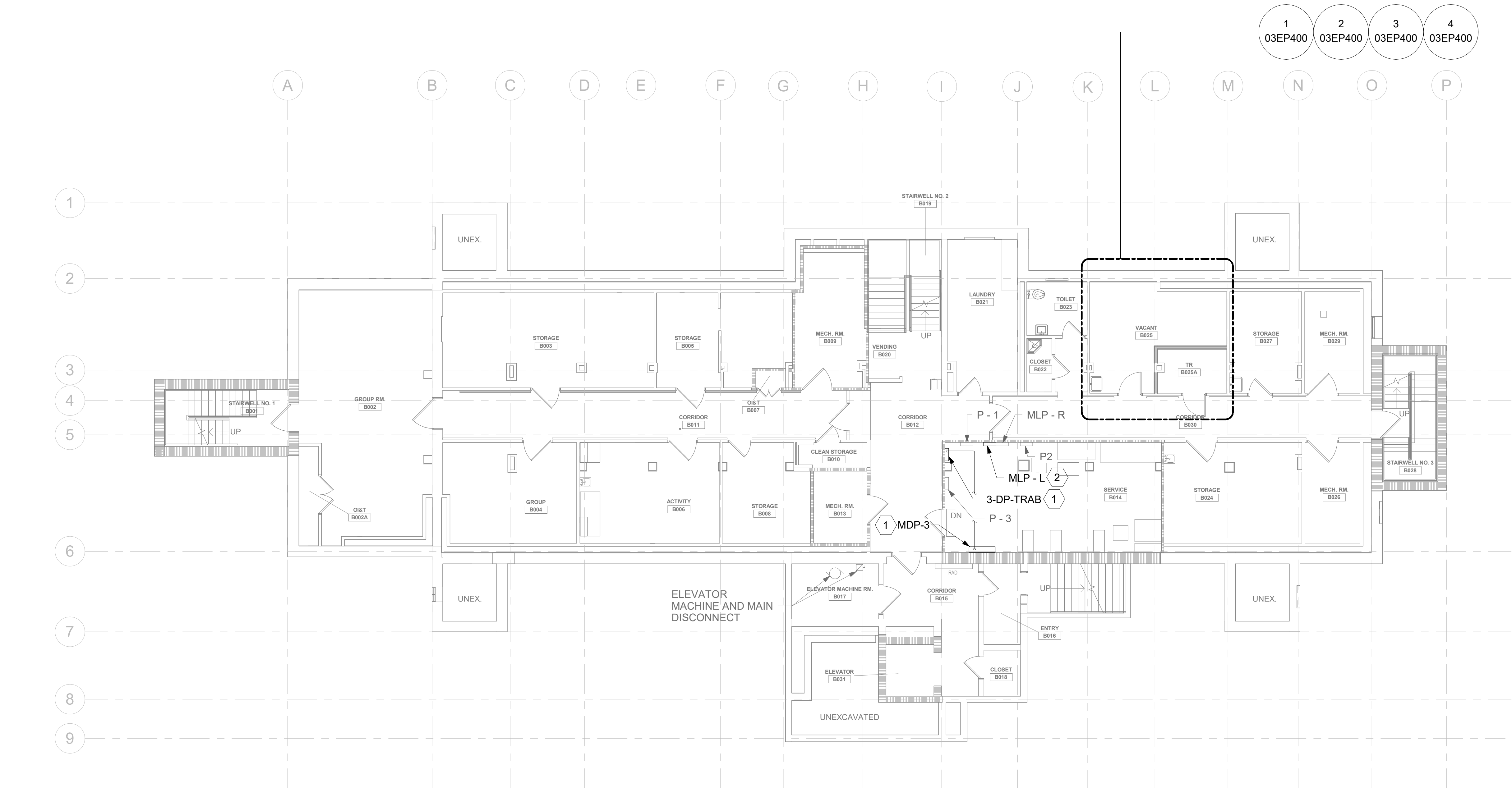
GENERAL NOTES

- ALL EXISTING EQUIPMENT MAY NOT BE SHOWN FOR CLARITY. CONTRACTOR SHALL FIELD VERIFY ALL POWER, LIGHTING AND ASSOCIATED CIRCUITRY AS REQUIRED. ALL RACEWAYS AND CONDUCTORS ASSOCIATED WITH EQUIPMENT TO BE DEMOLISHED SHALL BE DEMOLISHED BACK TO THEIR SOURCE, UNLESS OTHERWISE NOTED.
- CONTRACTOR SHALL DEMOLISH ALL ELECTRICAL EQUIPMENT, CONDUCTORS, AND RACEWAYS ASSOCIATED WITH WALLS BEING REMOVED AND IN ALL LOCATIONS WHERE JUNCTION BOXES WILL NOT REMAIN ACCESSIBLE AFTER INSTALLATION OF MILLWORK, UNLESS OTHERWISE NOTED.
- PROTECT ALL EXISTING WORK FROM DAMAGE DURING CONSTRUCTION. ANY DAMAGED MATERIALS, SYSTEMS, COMPONENTS, FINISHES BE LIKE, SHALL BE REPAIRED OR REPLACED AT THE EXPENSE OF THE CONTRACTOR TO THE ACCEPTANCE OF THE OWNER.
- CONTRACTOR SHALL COORDINATE NORMAL/ESSENTIAL ELECTRICAL SYSTEM SHUTDOWNS AND PHASING WITH THE VA PRIOR TO PERFORMING REQUIRED EQUIPMENT UPGRADES. CONTRACTOR TO PROVIDE BACKUP EMERGENCY POWER AND DETERMINE TIE-IN/CONNECTION PLAN WITH EXISTING EQUIPMENT. POWER TO ALL EXISTING ESSENTIAL EQUIPMENT CANNOT BE INTERRUPTED AND SHALL REMAIN ACTIVE DURING CONSTRUCTION. BACKUP POWER AND TIE-IN SHALL CONFORM WITH VA STANDARDS.
- SEAL ALL INTERIOR WALL AND CEILING PENETRATIONS TO MATCH EXISTING FIRE RATING OR NEW FIRE RATING, IF REQUIRED. COORDINATE WITH ARCHITECTURAL DRAWINGS AS REQUIRED.
- REFERENCE CORRESPONDING ONE-LINE DIAGRAM FOR ADDITIONAL INFORMATION.
- CONTRACTOR SHALL PROVIDE UPDATED CIRCUIT PANEL DIRECTORIES FOR ALL PANELS THAT CONTAIN CIRCUITS IMPACTED BY THIS PROJECT.
- CONTRACTOR SHALL BE RESPONSIBLE FOR RELOCATING FURNITURE, INCLUDING TRANSPORTATION, FOR ALL WORK TO DESIRED VA STORAGE LOCATION. COORDINATE WITH VA AS REQUIRED.

KEY NOTES

KEY PLAN





1 BLDG 03 - FLOOR 0 - ELECTRICAL PLAN
1/8" = 1'-0"

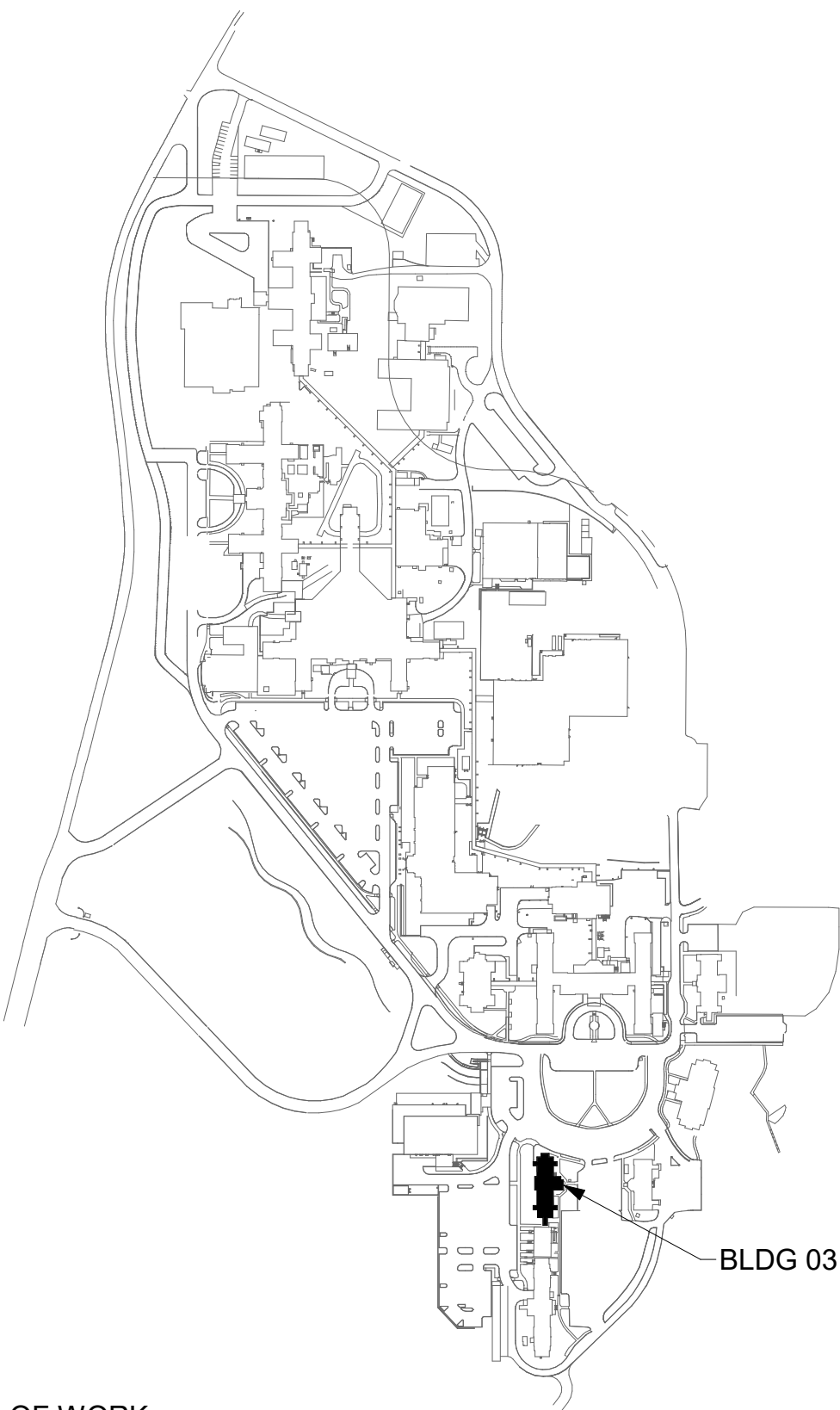
GENERAL NOTES

- ALL EXISTING EQUIPMENT MAY NOT BE SHOWN FOR CLARITY. CONTRACTOR SHALL FIELD VERIFY ALL POWER, LIGHTING AND ASSOCIATED CIRCUITRY AS REQUIRED. ALL RACEWAYS AND CONDUCTORS ASSOCIATED WITH EQUIPMENT TO BE DEMOLISHED SHALL BE DEMOLISHED BACK TO THEIR SOURCE, UNLESS OTHERWISE NOTED.
- CONTRACTOR SHALL DEMOLISH ALL ELECTRICAL EQUIPMENT, CONDUCTORS, AND RACEWAYS ASSOCIATED WITH WALLS BEING REMOVED AND IN ALL LOCATIONS WHERE JUNCTION BOXES WILL NOT REMAIN ACCESSIBLE AFTER INSTALLATION OF MILLWORK, UNLESS OTHERWISE NOTED.
- PROTECT ALL EXISTING WORK FROM DAMAGE DURING CONSTRUCTION. ANY DAMAGED MATERIALS, SYSTEMS, COMPONENTS, FINISHES BE LIKE, SHALL BE REPAIRED OR REPLACED AT THE EXPENSE OF THE CONTRACTOR TO THE ACCEPTANCE OF THE OWNER.
- CONTRACTOR SHALL COORDINATE NORMAL/ESSENTIAL ELECTRICAL SYSTEM SHUTDOWNS AND PHASING WITH THE VA PRIOR TO PERFORMING REQUIRED EQUIPMENT UPGRADES. CONTRACTOR TO PROVIDE BACKUP EMERGENCY POWER AND DETERMINE TIE-IN/CONNECTION PLAN WITH EXISTING EQUIPMENT. POWER TO ALL EXISTING ESSENTIAL EQUIPMENT CANNOT BE INTERRUPTED AND SHALL REMAIN ACTIVE DURING CONSTRUCTION. BACKUP POWER AND TIE-IN SHALL CONFORM WITH VA STANDARDS.
- SEAL ALL INTERIOR WALL AND CEILING PENETRATIONS TO MATCH EXISTING FIRE RATING OR NEW FIRE RATING, IF REQUIRED. COORDINATE WITH ARCHITECTURAL DRAWINGS AS REQUIRED.
- REFERENCE CORRESPONDING ONE-LINE DIAGRAM FOR ADDITIONAL INFORMATION.
- CONTRACTOR SHALL PROVIDE UPDATED CIRCUIT PANEL DIRECTORIES FOR ALL PANELS THAT CONTAIN CIRCUITS IMPACTED BY THIS PROJECT.
- CONTRACTOR SHALL BE RESPONSIBLE FOR RELOCATING FURNITURE, INCLUDING TRANSPORTATION, FOR ALL WORK TO DESIRED VA STORAGE LOCATION. COORDINATE WITH VA AS REQUIRED.
- REFERENCE ONE-LINE DIAGRAM ON SHEET 03EP601 FOR CONDUIT AND WIRE SIZING.

KEY NOTES

- EQUIPMENT TO BE ADDED. REFERENCE ONE-LINE DIAGRAM ON SHEET 03EP601 FOR ADDITIONAL INFORMATION.
- EXISTING PANEL TO BE MODIFIED. REFERENCE ONE-LINE DIAGRAM ON SHEET 03EP601 FOR ADDITIONAL INFORMATION.

KEY PLAN



--	--	--	--	--	--	--	--	--	--	--	--	--	--	--	--	--	--	--	--	--	--	--	--	--	--	--	--	--	--	--	--	--	--	--	--	--	--	--	--	--	--	--	--	--	--	--	--	--	--	--	--	--	--	--	--	--	--	--	--	--	--	--	--	--	--	--	--	--	--	--	--	--	--	--	--	--	--	--	--	--	--	--	--	--	--	--	--	--	--	--	--	--	--	--	--	--	--	--	--	--	--	--	--	--	--	--	--	--	--	--	--	--	--	--	--	--	--	--	--	--	--	--	--	--	--	--	--	--	--	--	--	--	--	--	--	--	--	--	--	--	--	--	--	--	--	--	--	--	--	--	--	--	--	--	--	--	--	--	--	--	--	--	--	--	--	--	--	--	--	--	--	--	--	--	--	--	--	--	--	--	--	--	--	--	--	--	--	--	--	--	--	--	--	--	--	--	--	--	--	--	--	--	--	--	--	--	--	--	--	--	--	--	--	--	--	--	--	--	--	--	--	--	--	--	--	--	--	--	--	--	--	--	--	--	--	--	--	--	--	--	--	--	--	--	--	--	--	--	--	--	--	--	--	--	--	--	--	--	--	--	--	--	--	--	--	--	--	--	--	--	--	--	--	--	--	--	--	--	--	--	--	--	--	--	--	--	--	--	--	--	--	--	--	--	--	--	--	--	--	--	--	--	--	--	--	--	--	--	--	--	--	--	--	--	--	--	--	--	--	--	--	--	--	--	--	--	--	--	--	--	--	--	--	--	--	--	--	--	--	--	--	--	--	--	--	--	--	--	--	--	--	--	--	--	--	--	--	--	--	--	--	--	--	--	--	--	--	--	--	--	--	--	--	--	--	--	--	--	--	--	--	--	--	--	--	--	--	--	--	--	--	--	--	--	--	--	--	--	--	--	--	--	--	--	--	--	--	--	--	--	--	--	--	--	--	--	--	--	--	--	--	--	--	--	--	--	--	--	--	--	--	--	--	--	--	--	--	--	--	--	--	--	--	--	--	--	--	--	--	--	--	--	--	--	--	--	--	--	--	--	--	--	--	--	--	--	--	--	--	--	--	--	--	--	--	--	--	--	--	--	--	--	--	--	--	--	--	--	--	--	--	--	--	--	--	--	--	--	--	--	--	--	--	--	--	--	--	--	--	--	--	--	--	--	--	--	--	--	--	--	--	--	--	--	--	--	--	--	--	--	--	--	--	--	--	--	--	--	--	--	--	--	--	--	--	--	--	--	--	--	--	--	--	--	--	--	--	--	--	--	--	--	--	--	--	--	--	--	--	--	--	--	--	--	--	--	--	--	--	--	--	--	--	--	--	--	--	--	--	--	--	--	--	--	--	--	--	--	--	--	--	--	--	--	--	--	--	--	--	--	--	--	--	--	--	--	--	--	--	--	--	--	--	--	--	--	--	--	--	--	--	--	--	--	--	--	--	--	--	--	--	--	--	--	--	--	--	--	--	--	--	--	--	--	--	--	--	--	--	--	--	--	--	--	--	--	--	--	--	--	--	--	--	--	--	--	--	--	--	--	--	--	--	--	--	--	--	--	--	--	--	--	--	--	--	--	--	--	--	--	--	--	--	--	--	--	--	--	--	--	--	--	--	--	--	--	--	--	--	--	--	--	--	--	--	--	--	--	--	--	--	--	--	--	--	--	--	--	--	--	--	--	--	--	--	--	--	--	--	--	--	--	--	--	--	--	--	--	--	--	--	--	--	--	--	--	--	--	--	--	--	--	--	--	--	--	--	--	--	--	--	--	--	--	--	--	--	--	--	--	--	--	--	--	--	--	--	--	--	--	--	--	--	--	--	--	--	--	--	--	--	--	--	--	--	--	--	--	--	--	--	--	--	--	--	--	--	--	--	--	--	--	--	--	--	--	--	--	--	--	--	--	--	--	--	--	--	--	--	--	--	--	--	--	--	--	--	--	--	--	--	--	--	--	--	--	--	--	--	--	--	--	--	--	--	--	--	--	--	--	--	--	--	--	--	--	--	--	--	--	--	--	--	--	--	--	--	--	--	--	--	--	--	--	--	--	--	--	--	--	--	--	--	--	--	--	--	--	--	--	--	--	--	--	--	--	--	--	--	--	--	--	--	--	--	--	--	--	--	--	--	--	--	--	--	--	--	--	--	--	--	--	--	--	--	--	--	--	--	--	--	--	--	--	--	--	--	--	--	--	--	--	--	--	--	--	--	--	--	--	--	--	--	--	--	--	--	--	--	--	--	--	--	--	--	--	--	--	--	--	--	--	--	--	--	--	--	--	--	--	--	--	--	--	--	--	--	--	--	--	--	--	--	--	--	--	--	--	--	--	--	--	--	--	--	--	--	--	--	--	--	--	--	--	--	--	--	--	--	--	--	--	--	--	--	--	--	--	--	--	--	--	--	--	--	--	--	--	--	--	--	--	--	--	--	--	--	--	--	--	--	--	--	--	--	--	--	--	--	--	--	--	--	--	--	--	--	--	--	--	--	--	--	--	--	--	--	--	--	--	--	--	--	--	--	--	--	--	--	--	--	--	--	--	--	--	--	--	--	--	--	--	--	--	--	--	--	--	--	--	--	--	--	--	--	--	--	--	--	--	--	--	--	--	--	--	--	--	--	--	--	--	--	--	--	--	--	--	--	--	--	--	--	--	--	--	--	--	--	--	--	--	--	--	--	--	--	--	--	--	--	--	--	--	--	--	--	--	--	--	--	--	--	--	--	--	--	--	--	--	--	--	--	--	--	--	--	--	--	--	--	--	--	--	--	--	--	--	--	--	--	--	--	--	--	--	--	--	--	--	--	--	--	--	--	--	--	--	--	--	--	--	--	--	--	--	--	--	--	--	--	--	--	--	--	--	--	--	--	--	--	--	--	--	--	--	--	--	--	--	--	--	--	--	--	--	--	--	--	--	--	--	--	--	--	--	--	--	--	--	--	--	--	--	--	--	--	--	--	--	--	--	--	--	--	--	--	--	--	--	--	--	--	--	--	--	--	--	--	--	--	--	--	--	--	--	--	--	--	--	--	--	--	--	--	--	--	--	--	--	--	--	--	--	--	--	--	--	--	--	--	--	--	--	--	--	--	--	--	--	--

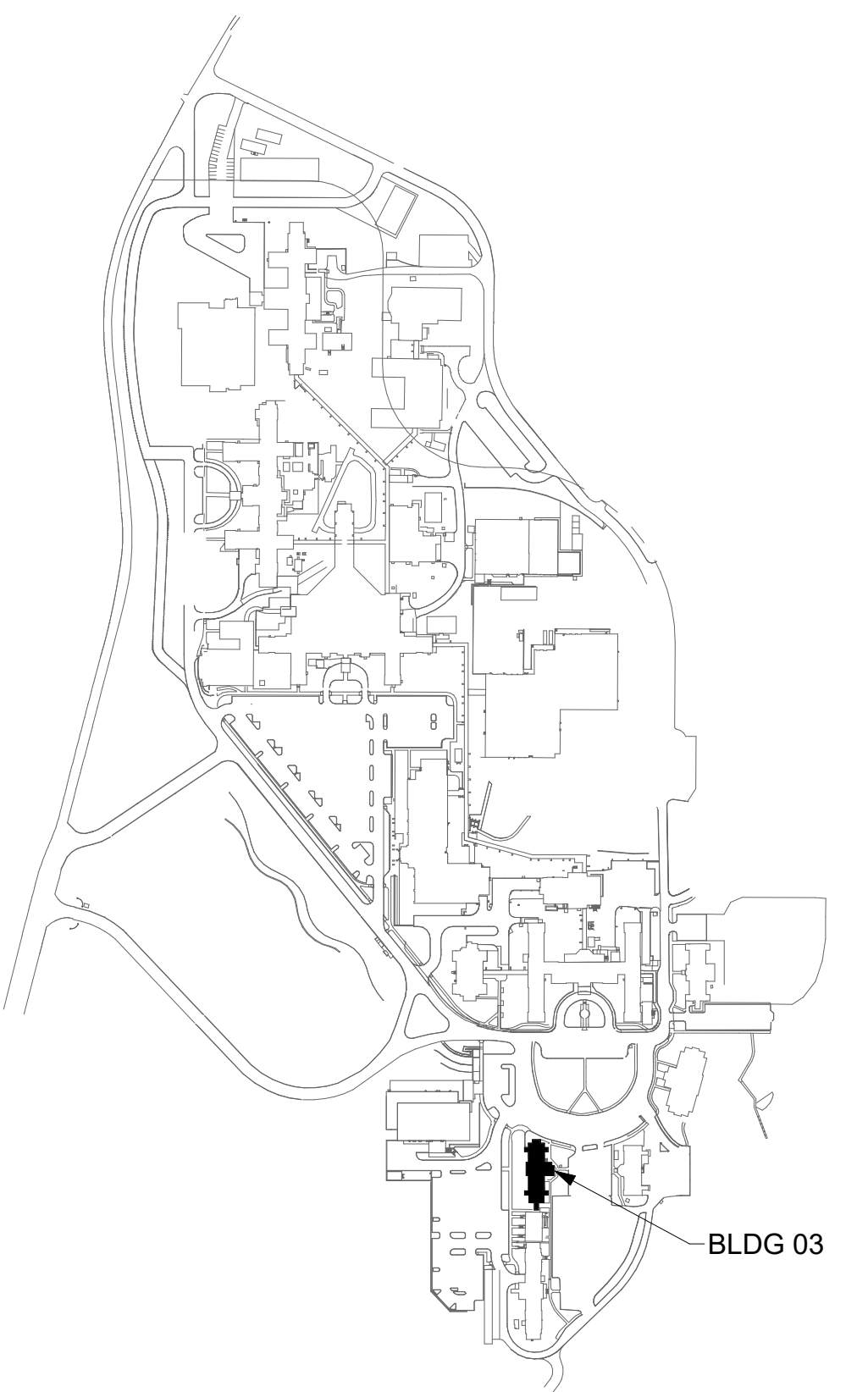
GENERAL NOTES

1. ALL EXISTING EQUIPMENT MAY NOT BE SHOWN FOR CLARITY. CONTRACTOR SHALL FIELD VERIFY ALL POWER, LIGHTING AND ASSOCIATED CIRCUITRY AS REQUIRED. ALL RACEWAYS AND CONDUCTORS ASSOCIATED WITH EQUIPMENT TO BE DEMOLISHED SHALL BE DEMOLISHED BACK TO THEIR SOURCE, UNLESS OTHERWISE NOTED.
2. CONTRACTOR SHALL DEMOLISH ALL ELECTRICAL EQUIPMENT, CONDUCTORS, AND RACEWAYS ASSOCIATED WITH WALLS BEING REMOVED AND IN ALL LOCATIONS WHERE JUNCTION BOXES WILL NOT REMAIN ACCESSIBLE AFTER INSTALLATION OF MILLWORK, UNLESS OTHERWISE NOTED.
3. PROTECT ALL EXISTING WORK FROM DAMAGE DURING CONSTRUCTION. ANY DAMAGED MATERIALS, SYSTEMS, COMPONENTS, FINISHES BE LIKE, SHALL BE REPAIRED OR REPLACED AT THE EXPENSE OF THE CONTRACTOR TO THE ACCEPTANCE OF THE OWNER.
4. CONTRACTOR SHALL COORDINATE NORMAL/ESSENTIAL ELECTRICAL SYSTEM SHUTDOWNS AND PHASING WITH THE VA PRIOR TO PERFORMING REQUIRED EQUIPMENT UPGRADES. CONTRACTOR TO PROVIDE BACKUP EMERGENCY POWER AND DETERMINE TIE-IN/CONNECTION PLAN WITH EXISTING EQUIPMENT. POWER TO ALL EXISTING ESSENTIAL EQUIPMENT CANNOT BE INTERRUPTED AND SHALL REMAIN ACTIVE DURING CONSTRUCTION. BACKUP POWER AND TIE-IN SHALL CONFORM WITH VA STANDARDS.
5. SEAL ALL INTERIOR WALL AND CEILING PENETRATIONS TO MATCH EXISTING FIRE RATING OR NEW FIRE RATING, IF REQUIRED. COORDINATE WITH ARCHITECTURAL DRAWINGS AS REQUIRED.
6. REFERENCE CORRESPONDING ONE-LINE DIAGRAM FOR ADDITIONAL INFORMATION.
7. CONTRACTOR SHALL PROVIDE UPDATED CIRCUIT PANEL DIRECTORIES FOR ALL PANELS THAT CONTAIN CIRCUITS IMPACTED BY THIS PROJECT.
8. CONTRACTOR SHALL BE RESPONSIBLE FOR RELOCATING FURNITURE, INCLUDING TRANSPORTATION, FOR ALL WORK TO DESIRED VA STORAGE LOCATION. COORDINATE WITH VA AS REQUIRED.

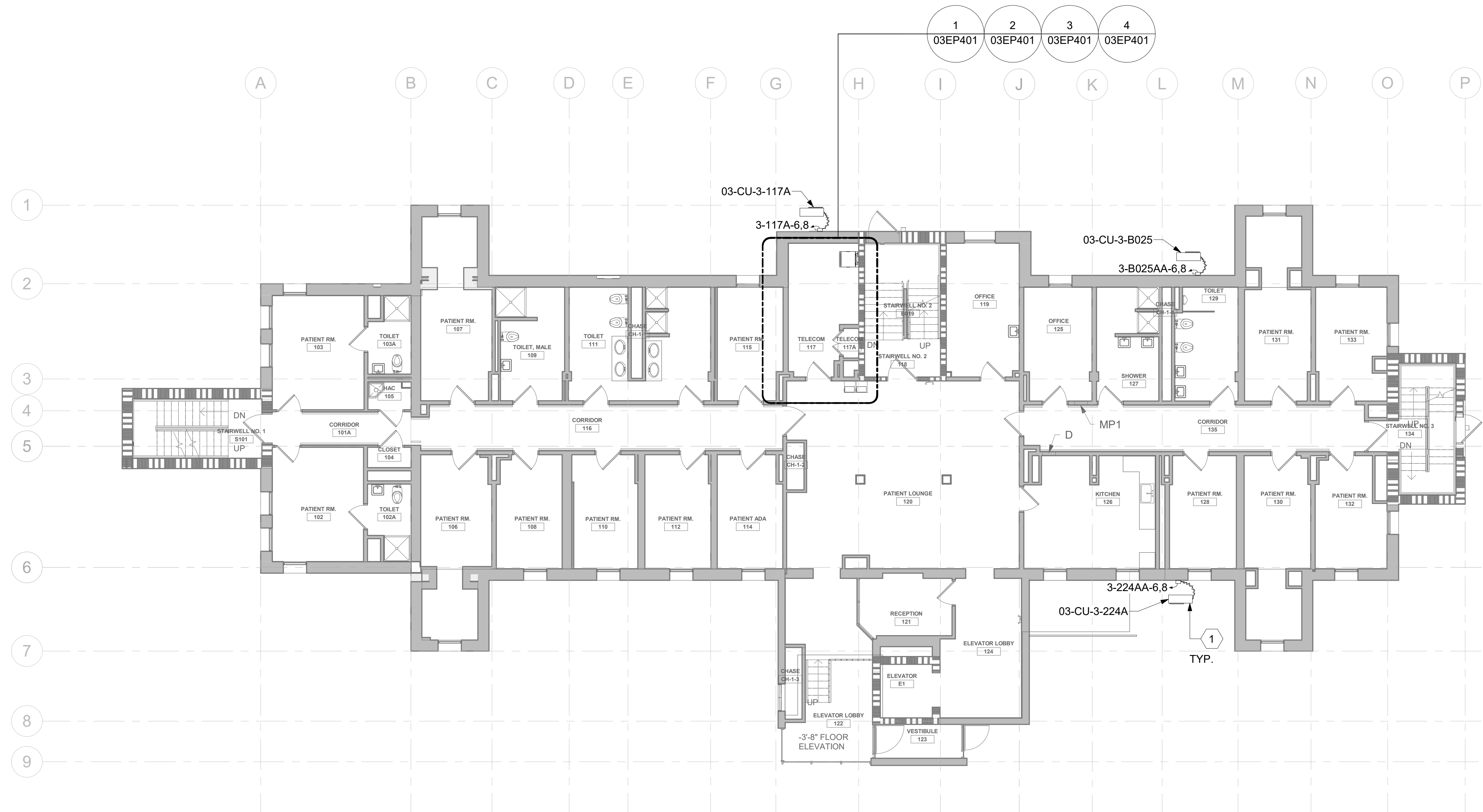
KEY NOTES


- 1 PROVIDE CONDUIT AND WIRE FROM CONDENSING UNIT TO ASSOCIATED AC UNIT AS REQUIRED PER MANUFACTURER'S INSTRUCTIONS. COORDINATE WITH MECHANICAL CONTRACTOR AS REQUIRED.

KEY PLAN



AREA OF WORK





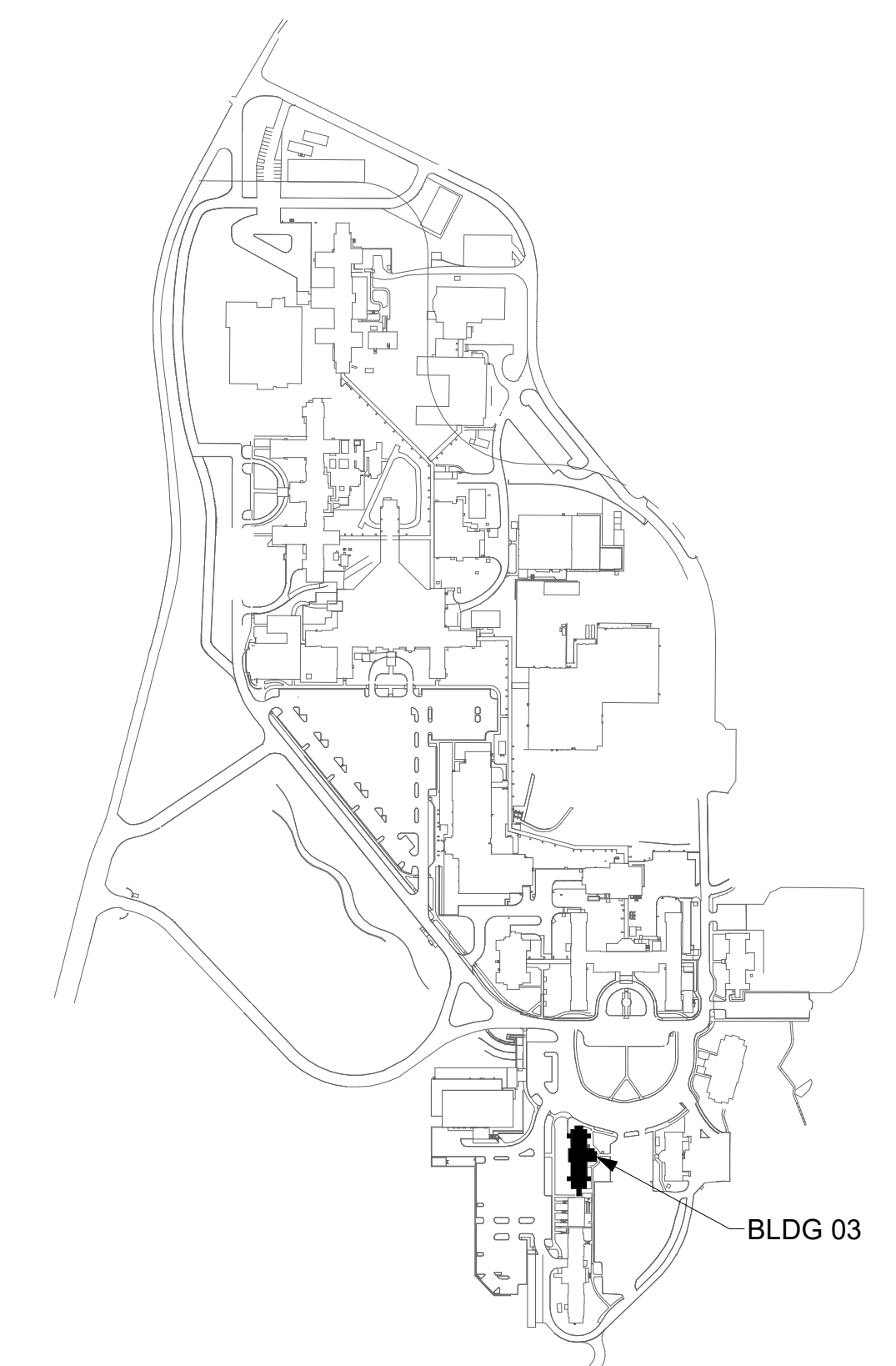
[illegible]

GENERAL NOTES


1. ALL EXISTING EQUIPMENT MAY NOT BE SHOWN FOR CLARITY. CONTRACTOR SHALL FIELD VERIFY ALL POWER, LIGHTING AND ASSOCIATED CIRCUITRY AS REQUIRED. ALL RACEWAYS AND CONDUCTORS ASSOCIATED WITH EQUIPMENT TO BE DEMOLISHED SHALL BE DEMOLISHED BACK TO THEIR SOURCE, UNLESS OTHERWISE NOTED.
2. CONTRACTOR SHALL DEMOLISH ALL ELECTRICAL EQUIPMENT, CONDUCTORS, AND RACEWAYS ASSOCIATED WITH WALLS BEING REMOVED AND IN ALL LOCATIONS WHERE JUNCTION BOXES WILL NOT REMAIN ACCESSIBLE AFTER INSTALLATION OF MILLWORK, UNLESS OTHERWISE NOTED.
3. PROTECT ALL EXISTING WORK FROM DAMAGE DURING CONSTRUCTION. ANY DAMAGED MATERIALS, SYSTEMS, COMPONENTS, FINISHES BE LIKE, SHALL BE REPAIRED OR REPLACED AT THE EXPENSE OF THE CONTRACTOR TO THE ACCEPTANCE OF THE OWNER.
4. CONTRACTOR SHALL COORDINATE NORMAL/ESSENTIAL ELECTRICAL SYSTEM SHUTDOWNS AND PHASING WITH VA PRIOR TO PERFORMING REQUIRED EQUIPMENT UPGRADES: CONTRACTOR TO PROVIDE BACKUP EMERGENCY POWER AND DETERMINE TIE-IN/CONECTION PLAN WITH EXISTING EQUIPMENT. POWER TO ALL EXISTING ESSENTIAL EQUIPMENT CANNOT BE INTERRUPTED AND SHALL REMAIN ACTIVE DURING CONSTRUCTION. BACKUP POWER AND TIE-IN SHALL CONFORM WITH VA STANDARDS.
5. SEAL ALL INTERIOR WALL AND CEILING PENETRATIONS TO MATCH EXISTING FIRE RATING OR NEW FIRE RATING, IF REQUIRED. COORDINATE WITH ARCHITECTURAL DRAWINGS AS REQUIRED.
6. REFERENCE CORRESPONDING ONE-LINE DIAGRAM FOR ADDITIONAL INFORMATION.
7. CONTRACTOR SHALL PROVIDE UPDATED CIRCUIT PANEL DIRECTORIES FOR ALL PANELS THAT CONTAIN CIRCUITS IMPACTED BY THIS PROJECT.
8. CONTRACTOR SHALL BE RESPONSIBLE FOR RELOCATING FURNITURE, INCLUDING TRANSPORTATION, FOR ALL WORK TO DESIRED VA STORAGE LOCATION. COORDINATE WITH VA AS REQUIRED.

KEY NOTES

KEY PLAN



AREA OF WORK


BLDG 03 - FLOOR 2 - ELECTRICAL PLAN
 1/8" = 1'-0"

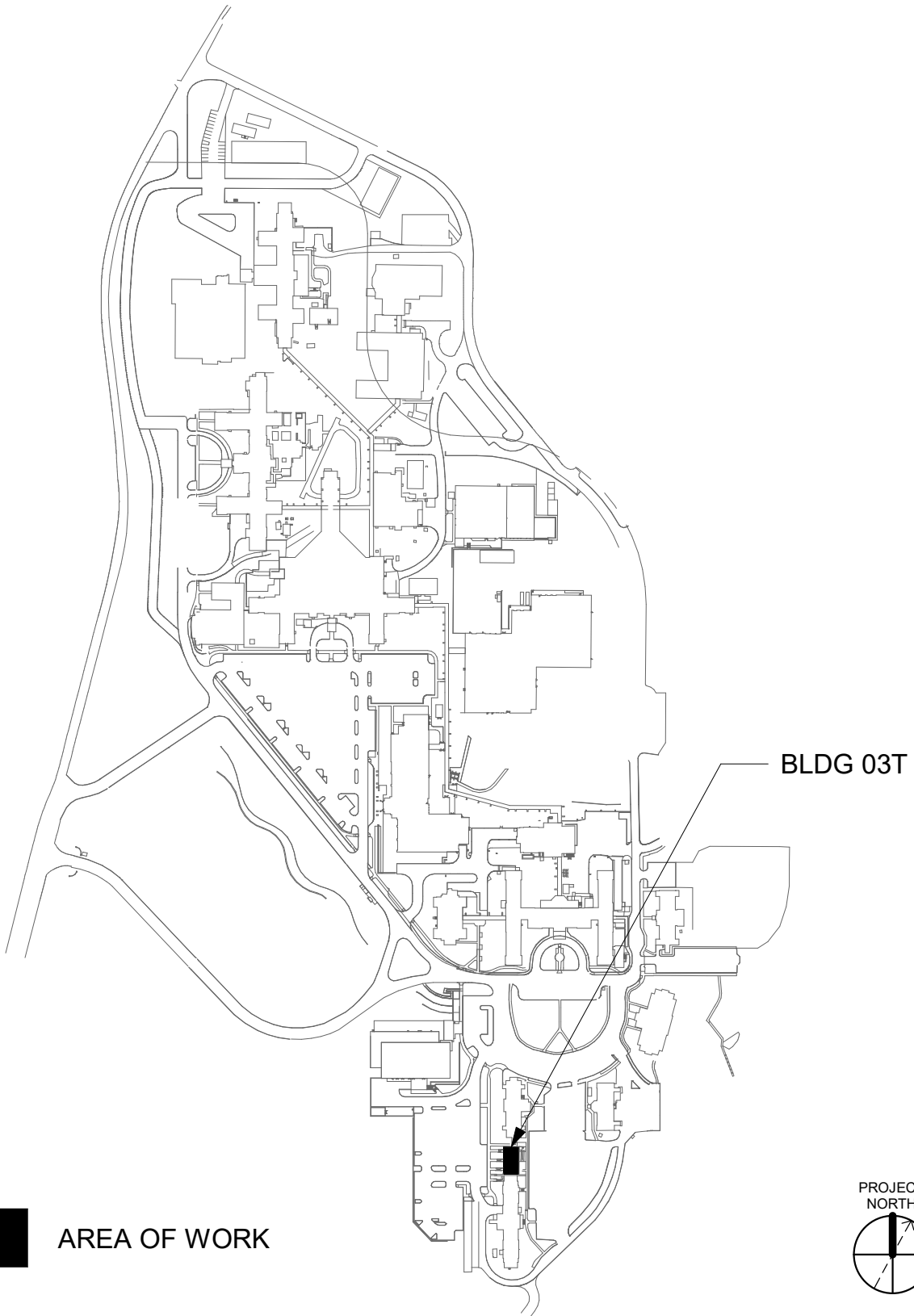
[illegible]

GENERAL NOTES

- ALL EXISTING EQUIPMENT MAY NOT BE SHOWN FOR CLARITY. CONTRACTOR SHALL FIELD VERIFY ALL POWER, LIGHTING AND ASSOCIATED CIRCUITRY AS REQUIRED. ALL RACEWAYS AND CONDUCTORS ASSOCIATED WITH EQUIPMENT TO BE DEMOLISHED SHALL BE DEMOLISHED BACK TO THEIR SOURCE, UNLESS OTHERWISE NOTED.
- CONTRACTOR SHALL DEMOLISH ALL ELECTRICAL EQUIPMENT, CONDUCTORS, AND RACEWAYS ASSOCIATED WITH WALLS BEING REMOVED AND IN ALL LOCATIONS WHERE JUNCTION BOXES WILL NOT REMAIN ACCESSIBLE AFTER INSTALLATION OF MILLWORK, UNLESS OTHERWISE NOTED.
- PROTECT ALL EXISTING WORK FROM DAMAGE DURING CONSTRUCTION. ANY DAMAGED MATERIALS, SYSTEMS, COMPONENTS, FINISHES BE LIKE, SHALL BE REPAIRED OR REPLACED AT THE EXPENSE OF THE CONTRACTOR TO THE ACCEPTANCE OF THE OWNER.
- CONTRACTOR SHALL COORDINATE NORMAL/ESSENTIAL ELECTRICAL SYSTEM SHUTDOWNS AND PHASING WITH THE VA PRIOR TO PERFORMING REQUIRED EQUIPMENT UPGRADES. CONTRACTOR TO PROVIDE BACKUP EMERGENCY POWER AND DETERMINE TIE-IN/CONNECTION PLAN WITH EXISTING EQUIPMENT. POWER TO ALL EXISTING ESSENTIAL EQUIPMENT CANNOT BE INTERRUPTED AND SHALL REMAIN ACTIVE DURING CONSTRUCTION. BACKUP POWER AND TIE-IN SHALL CONFORM WITH VA STANDARDS.
- SEAL ALL INTERIOR WALL AND CEILING PENETRATIONS TO MATCH EXISTING FIRE RATING OR NEW FIRE RATING, IF REQUIRED. COORDINATE WITH ARCHITECTURAL DRAWINGS AS REQUIRED.
- REFERENCE CORRESPONDING ONE-LINE DIAGRAM FOR ADDITIONAL INFORMATION.
- CONTRACTOR SHALL PROVIDE UPDATED CIRCUIT PANEL DIRECTORIES FOR ALL PANELS THAT CONTAIN CIRCUITS IMPACTED BY THIS PROJECT.
- CONTRACTOR SHALL BE RESPONSIBLE FOR RELOCATING FURNITURE, INCLUDING TRANSPORTATION, FOR ALL WORK TO DESIRED VA STORAGE LOCATION. COORDINATE WITH VA AS REQUIRED.

KEY NOTES

KEY PLAN



1 BLDG 03T - FLOOR 1 - ELECTRICAL PLAN
1/4" = 1'-0" PROJECT NORTH

--	--	--	--	--	--	--	--	--	--	--	--	--	--	--	--	--	--	--	--	--	--	--	--	--	--	--	--	--	--	--	--	--	--	--	--	--	--	--	--	--	--	--	--	--	--	--	--	--	--	--	--	--	--	--	--	--	--	--	--	--	--	--	--	--	--	--	--	--	--	--	--	--	--	--	--	--	--	--	--	--	--	--	--	--	--	--	--	--	--	--	--	--	--	--	--	--	--	--	--	--	--	--	--	--	--	--	--	--	--	--	--	--	--	--	--	--	--	--	--	--	--	--	--	--	--	--	--	--	--	--	--	--	--	--	--	--	--	--	--	--	--	--	--	--	--	--	--	--	--	--	--	--	--	--	--	--	--	--	--	--	--	--	--	--	--	--	--	--	--	--	--	--	--	--	--	--	--	--	--	--	--	--	--	--	--	--	--	--	--	--	--	--	--	--	--	--	--	--	--	--	--	--	--	--	--	--	--	--	--	--	--	--	--	--	--	--	--	--	--	--	--	--	--	--	--	--	--	--	--	--	--	--	--	--	--	--	--	--	--	--	--	--	--	--	--	--	--	--	--	--	--	--	--	--	--	--	--	--	--	--	--	--	--	--	--	--	--	--	--	--	--	--	--	--	--	--	--	--	--	--	--	--	--	--	--	--	--	--	--	--	--	--	--	--	--	--	--	--	--	--	--	--	--	--	--	--	--	--	--	--	--	--	--	--	--	--	--	--	--	--	--	--	--	--	--	--	--	--	--	--	--	--	--	--	--	--	--	--	--	--	--	--	--	--	--	--	--	--	--	--	--	--	--	--	--	--	--	--	--	--	--	--	--	--	--	--	--	--	--	--	--	--	--	--	--	--	--	--	--	--	--	--	--	--	--	--	--	--	--	--	--	--	--	--	--	--	--	--	--	--	--	--	--	--	--	--	--	--	--	--	--	--	--	--	--	--	--	--	--	--	--	--	--	--	--	--	--	--	--	--	--	--	--	--	--	--	--	--	--	--	--	--	--	--	--	--	--	--	--	--	--	--	--	--	--	--	--	--	--	--	--	--	--	--	--	--	--	--	--	--	--	--	--	--	--	--	--	--	--	--	--	--	--	--	--	--	--	--	--	--	--	--	--	--	--	--	--	--	--	--	--	--	--	--	--	--	--	--	--	--	--	--	--	--	--	--	--	--	--	--	--	--	--	--	--	--	--	--	--	--	--	--	--	--	--	--	--	--	--	--	--	--	--	--	--	--	--	--	--	--	--	--	--	--	--	--	--	--	--	--	--	--	--	--	--	--	--	--	--	--	--	--	--	--	--	--	--	--	--	--	--	--	--	--	--	--	--	--	--	--	--	--	--	--	--	--	--	--	--	--	--	--	--	--	--	--	--	--	--	--	--	--	--	--	--	--	--	--	--	--	--	--	--	--	--	--	--	--	--	--	--	--	--	--	--	--	--	--	--	--	--	--	--	--	--	--	--	--	--	--	--	--	--	--	--	--	--	--	--	--	--	--	--	--	--	--	--	--	--	--	--	--	--	--	--	--	--	--	--	--	--	--	--	--	--	--	--	--	--	--	--	--	--	--	--	--	--	--	--	--	--	--	--	--	--	--	--	--	--	--	--	--	--	--	--	--	--	--	--	--	--	--	--	--	--	--	--	--	--	--	--	--	--	--	--	--	--	--	--	--	--	--	--	--	--	--	--	--	--	--	--	--	--	--	--	--	--	--	--	--	--	--	--	--	--	--	--	--	--	--	--	--	--	--	--	--	--	--	--	--	--	--	--	--	--	--	--	--	--	--	--	--	--	--	--	--	--	--	--	--	--	--	--	--	--	--	--	--	--	--	--	--	--	--	--	--	--	--	--	--	--	--	--	--	--	--	--	--	--	--	--	--	--	--	--	--	--	--	--	--	--	--	--	--	--	--	--	--	--	--	--	--	--	--	--	--	--	--	--	--	--	--	--	--	--	--	--	--	--	--	--	--	--	--	--	--	--	--	--	--	--	--	--	--	--	--	--	--	--	--	--	--	--	--	--	--	--	--	--	--	--	--	--	--	--	--	--	--	--	--	--	--	--	--	--	--	--	--	--	--	--	--	--	--	--	--	--	--	--	--	--	--	--	--	--	--	--	--	--	--	--	--	--	--	--	--	--	--	--	--	--	--	--	--	--	--	--	--	--	--	--	--	--	--	--	--	--	--	--	--	--	--	--	--	--	--	--	--	--	--	--	--	--	--	--	--	--	--	--	--	--	--	--	--	--	--	--	--	--	--	--	--	--	--	--	--	--	--	--	--	--	--	--	--	--	--	--	--	--	--	--	--	--	--	--	--	--	--	--	--	--	--	--	--	--	--	--	--	--	--	--	--	--	--	--	--	--	--	--	--	--	--	--	--	--	--	--	--	--	--	--	--	--	--	--	--	--	--	--	--	--	--	--	--	--	--	--	--	--	--	--	--	--	--	--	--	--	--	--	--	--	--	--	--	--	--	--	--	--	--	--	--	--	--	--	--	--	--	--	--	--	--	--	--	--	--	--	--	--	--	--	--	--	--	--	--	--	--	--	--	--	--	--	--	--	--	--	--	--	--	--	--	--	--	--	--	--	--	--	--	--	--	--	--	--	--	--	--	--	--	--	--	--	--	--	--	--	--	--