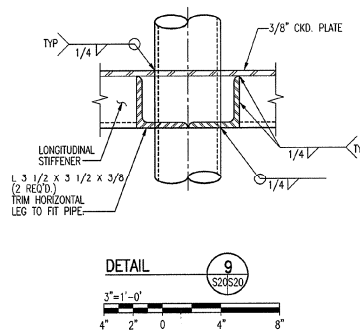
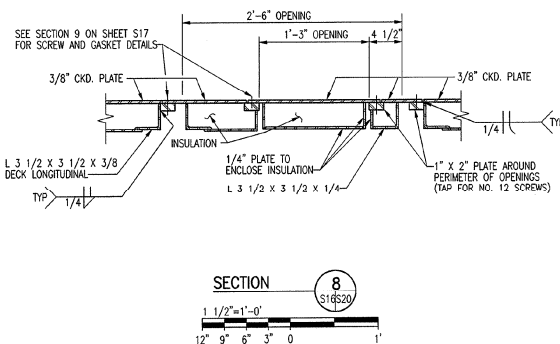


NOTE:  
1. REFER TO FLOATING DOCK SHOP DRAWINGS FOR ADDITIONAL DETAILS.



1	6/16/00	RJS	RECORD DRAWING	SAE
REV.	DATE	APPR.	DESCRIPTION	BY
DESIGNED	ICT	LS	U.S. COAST GUARD NORFOLK, VA.	
DRAWN	LS		FACILITIES DESIGN & CONSTRUCTION CENTER	
EDITED			CIVIL ENGINEERING	
CHECKED	RJS		ST. LOUIS BASE RELOCATION	
PROJECT ENGINEER			US ARMY CORPS OF ENGINEERS SERVICE BASE	
REVIEWED BY:			ST. LOUIS MISSOURI	
BRANCH CHIEF			WATERFRONT FACILITIES	
REVIEWED BY:			FLOATING DOCK DETAILS - SHEET 4	
APPROVED:			DISCIPLINE/SHT NO.	S20
CHIEF OF DIVISION			DATE	
STANLEY CONSULTANTS			DRAWINGS NUMBER	
INTERNATIONAL CONSULTANTS IN ENGINEERING, ARCHITECTURE, PLANNING, AND MANAGEMENT			02-A5002	
SCALE: AS NOTED			SHEET 48 OF 112	