

AN ENGINEERING, INC.

: No. V101C-1052
No. 647-018

Corrections to
s 1, 5, 6, & 8

PHOTO NO. 144
Date Taken: 5-9-84

144. Rebar, brick and stone at
wall 21.

V.A. MEDICAL CENTER
Poplar Bluff, MO


Resident Engineer



AN ENGINEERING, INC.

PHOTO NO. 107
Date Taken: 9-16-83

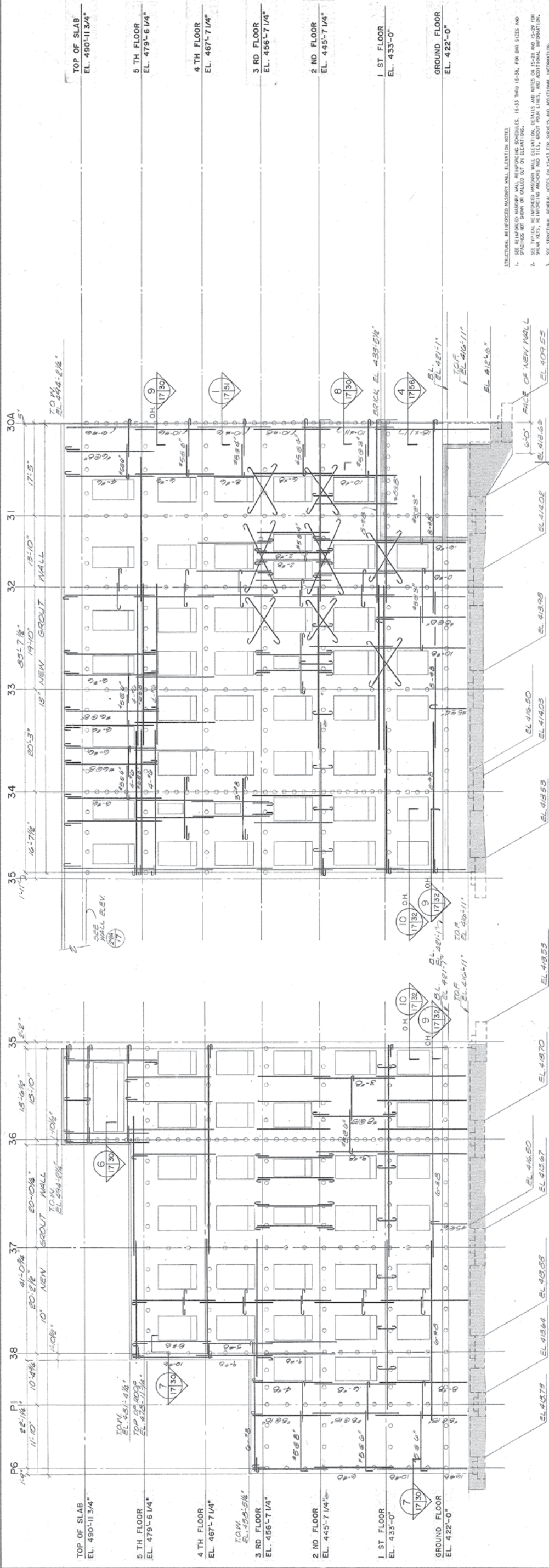
V.A. MEDICAL CENTER
Poplar Bluff, MO

t No. V101C-1052
No. 647-018

Corrections to
s 1, 5, 6, & 8

107. Pumping grout behind masonry @
wall 27 5th floor and installa-
tion of stone sill @ wall #27

Joseph Licuranga
Resident Engineer



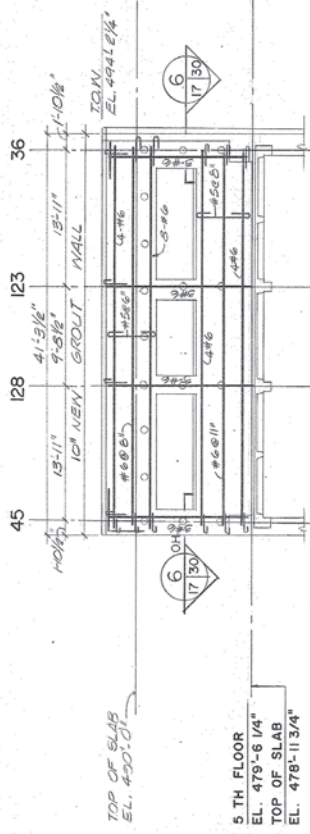
WALL ELEVATION 27
SCALE: 1/8" = 1'-0"

WALL ELEVATION 28
SCALE: 1/8" = 1'-0"

NOTE: SEE REINFORCED MASONRY WALL REINFORCING SCHEDULE ON 15-34 FOR BAR SIZES AND SPACINGS NOT SHOWN OR CALLED OUT ON ELEVATION.

NOTE: WHERE DIAGONAL REINFORCING IS SHOWN SYMBOLICALLY ON ELEVATION, PROVIDE 3-#6 FOR EACH BAR DESIGNATION. SEE TYPICAL REINFORCED MASONRY WALL ELEVATION ON SHEET 15-28 FOR EMBEDMENT LENGTH AND PLACEMENT REQUIREMENTS.

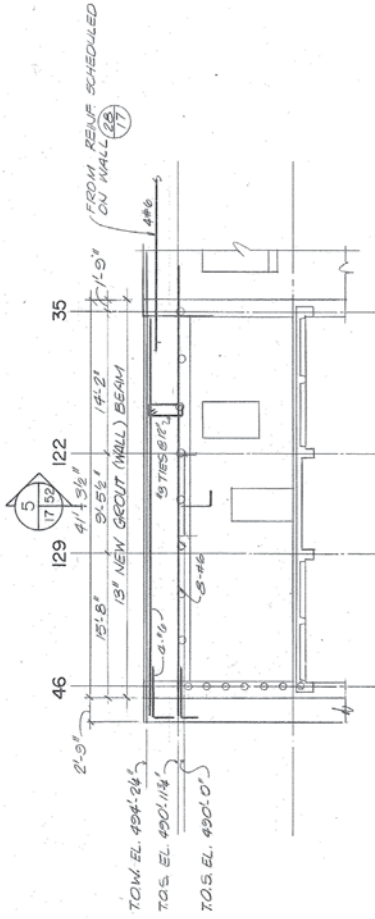
NOTE: SEE REINFORCED MASONRY WALL REINFORCING SCHEDULE ON 15-38 FOR BAR SIZES AND SPACINGS NOT SHOWN OR CALLED OUT ON ELEVATION.



NOTE: SHEAR KEYS WITH GROUTED ANCHORS SHALL BE AT 2'-0" CENTER TO CENTER HORIZONTALLY AND VERTICALLY FOR THIS ELEVATION. SEE TYPICAL REINFORCED MASONRY WALL ELEVATIONS, SECTIONS AND DETAILS ON 15-28 AND 15-29.

WALL ELEVATION 29
SCALE: 1/8" = 1'-0"

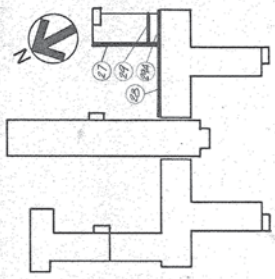
NOTE: AT THE BASE OF NEW REINFORCED MASONRY WALL, AT THE INTERFERENCE BETWEEN NEW GROUTED CAVITY AND EXISTING CONCRETE SLAB, PROVIDE 4 INCH DIAMETER BY 1/2 INCH DEEP SHEAR KEYS INTO THE EXISTING CONCRETE SLAB AT 1'-0" CENTER TO CENTER SPACING ALONG THE ENTIRE WALL LENGTH. CENTER SHEAR KEYS ON THE EXISTING CONCRETE SLAB. PROVIDE 4 INCH DIAMETER BY 1/2 INCH DEEP SHEAR KEYS INTO EXISTING SLAB AT CENTER OF EACH KEY.



WALL ELEVATION 29A
SCALE: 1/8" = 1'-0"



- STRUCTURAL REINFORCED MASONRY WALL ELEVATION NOTES
1. REINFORCED MASONRY WALL ELEVATIONS, SECTIONS AND DETAILS ON 15-28 THRU 15-34, FOR BAR SIZES AND SPACINGS NOT SHOWN OR CALLED OUT ON ELEVATION, SEE TYPICAL REINFORCED MASONRY WALL ELEVATION ON SHEET 15-28 FOR EMBEDMENT LENGTH AND PLACEMENT REQUIREMENTS.
 2. SEE TYPICAL REINFORCED MASONRY WALL ELEVATION, DETAILS AND NOTES ON 15-28 AND 15-29 FOR SHEAR KEYS, REINFORCING ANCHORS AND TIES, GROUT POOR LINES, AND ADDITIONAL INFORMATION.
 3. SEE STRUCTURAL GENERAL NOTES ON 15-27 FOR SURVEY AND ADDITIONAL INFORMATION.
 4. SEE KEY PLAN OF WALL ELEVATIONS, 15-10, FOR EXISTING COLUMN DESIGNATIONS.
 5. FOR FORMATION WALL AND DETAILS, INCLUDING CORNERS, SEE 15-29 THRU 15-42.
 6. DIMENSIONS GIVEN BETWEEN EXISTING COLUMN CENTER LINES ARE FOR THE LOWEST LEVEL AT WHICH THE COLUMN OCCURS DIRECTLY BEHIND AN EXISTING WALL. DIMENSIONS ABOVE THAT LEVEL MAY VARY SLIGHTLY DUE TO NON-SYMMETRICAL REDUCTION IN COLUMN SIZE.
 7. BRICK STRUCTURE OF REINFORCED MASONRY WALLS SHALL BE CONSTRUCTED IN ACCORDANCE WITH THE 2015 INTERNATIONAL BUILDING CODE (IBC) AND THE 2015 INTERNATIONAL MECHANICAL AND ELECTRICAL CODE (IMC).
 8. 5'0" GROUT FROM FIRST FLOOR WINDOW SILL POOR LINE TO THIRD FLOOR WINDOW SILL POOR LINE.
 9. 5'0" GROUT FROM FIRST FLOOR WINDOW SILL POOR LINE TO THIRD FLOOR WINDOW SILL POOR LINE.
 10. COORDINATE STRUCTURAL DETAILS WITH ARCHITECTURAL, MECHANICAL, AND ELECTRICAL DRAWINGS.
 11. S.I.L. EL. REFERENCES NEW BRICK LEDGE. TOP OF NEW REINFORCED CONCRETE FOUNDATION WALL.
 12. S.I.L. EL. REFERENCES TOP OF NEW CONTINUOUS REINFORCED CONCRETE FOOTING. SEE TYPICAL STEPPED FOOTING DETAIL ON 15-24 WHERE FOOTING DIMENSIONS ARE GIVEN.
 13. SEE FOUNDATION SECTION ON 15-29 THRU 15-42 FOR TOP OF EXISTING CONCRETE FOUNDATION WALLS.
 14. DIMENSIONS GIVEN BETWEEN EXISTING COLUMN CENTER LINES ARE FOR THE LOWEST LEVEL AT WHICH THE COLUMN OCCURS DIRECTLY BEHIND AN EXISTING WALL. DIMENSIONS ABOVE THAT LEVEL MAY VARY SLIGHTLY DUE TO NON-SYMMETRICAL REDUCTION IN COLUMN SIZE.
 15. 15'0" EL. REFERENCES TOP OF NEW GROUT WALL OR NEW CONCRETE WALL.
 16. ON COLUMN LINES AND SPACINGS, MAKE REFERENCES SHOWN HERE. SEE SHEET 15-28 FOR TYPICAL LOCATION AND SHEET 15-29 FOR TYPICAL DETAILS.



KEY PLAN
NO SCALE

WALL ELEVATIONS

| | | |
|----------------------------------|---------------------|---------|
| SHEET TITLE | PROJECT TITLE | DATE |
| 1 | SEISMIC CORRECTIONS | 2-10-82 |
| DRAWN | CHECKED | BMD |
| D.T.K. | | |
| The Drake Partnership Architects | | |
| 10425 Old Olive Street Road | | |
| St. Louis, Mo. 63141 | | |
| Comm. No.: 8017 | | |
| APPROVED: PROJECT DIRECTOR | | |
| 647-018 | | |
| VETERANS ADMINISTRATION | | |