

A compass rose with a circle divided into four quadrants by a vertical and horizontal line. The top quadrant is labeled 'N' for North. The left quadrant is labeled 'PROJECT NORTH' with an arrow pointing left. The right quadrant is labeled 'E' for East. The bottom quadrant is labeled 'S' for South.

VA FORM 08-6231



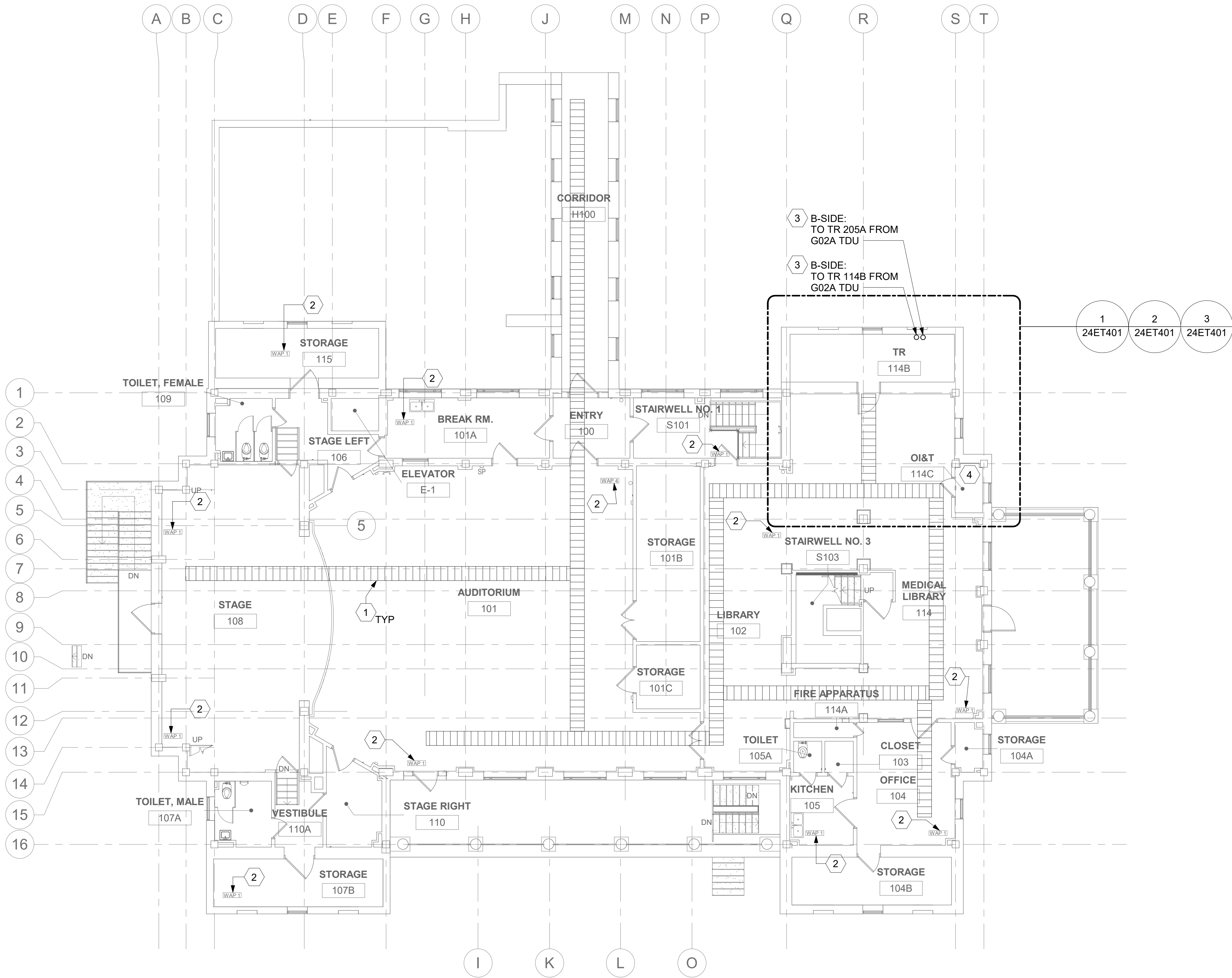
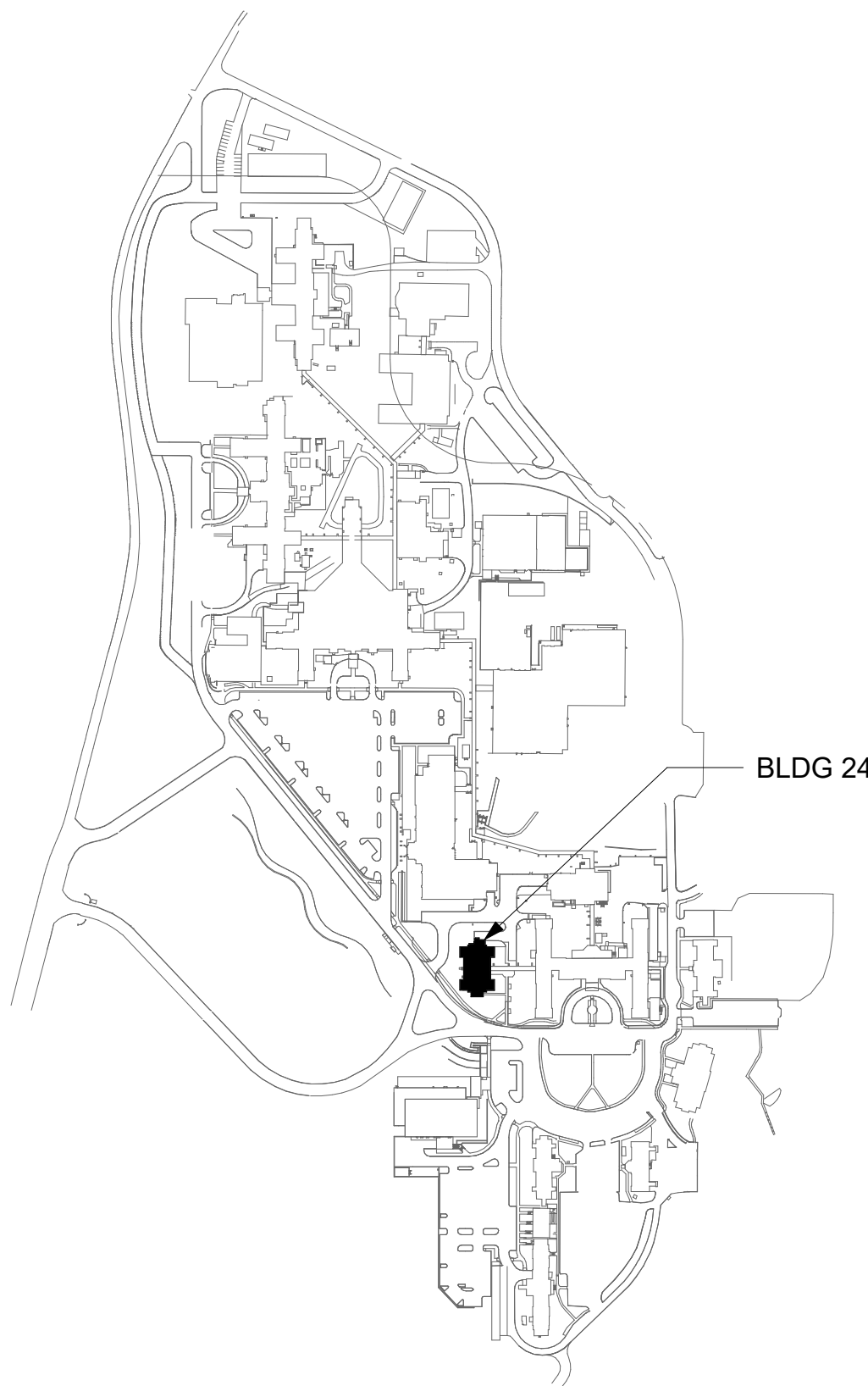
GENERAL NOTES

- ALL EXISTING EQUIPMENT MAY NOT BE SHOWN FOR CLARITY. CONTRACTOR SHALL FIELD VERIFY ALL POWER AND SIGNAL DEVICES AND ASSOCIATED CIRCUITRY AS REQUIRED. ALL RACEWAYS AND CONDUCTORS ASSOCIATED WITH EQUIPMENT TO BE DEMOLISHED SHALL BE DEMOLISHED BACK TO THEIR SOURCE, UNLESS OTHERWISE NOTED.
- PROTECT ALL EXISTING WORK FROM DAMAGE DURING CONSTRUCTION. ANY DAMAGED MATERIALS, SYSTEMS, COMPONENTS, FINISHES BE LIKE, SHALL BE REPAIRED OR REPLACED AT THE EXPENSE OF THE CONTRACTOR TO THE ACCEPTANCE OF THE OWNER.
- SEAL ALL INTERIOR WALL AND CEILING PENETRATIONS TO MATCH EXISTING FIRE RATING OR NEW FIRE RATING, IF REQUIRED. COORDINATE WITH ARCHITECTURAL DRAWINGS AS REQUIRED.
- PROVIDE PULL BOXES SIZED PER ANSI/TIA-569 AT 100-FT INTERVALS IN STRAIGHT CONDUIT RUNS, OR CONDUIT CONTAINING BENDS TOTALING MORE THAN 180 DEGREES.
- PROVIDE CONDUITS AND SLEEVES AS REQUIRED FOR ROUTING AND INSTALLATION OF BACKBONE CABLING. PROVIDE FIRE-STOP MATERIALS TO SEAL IN AND AROUND CONDUIT PER CODE. REFER TO ARCHITECTURAL DRAWINGS FOR PARTITION TYPES AND WALL HEIGHTS.
- CONTRACTOR SHALL BE RESPONSIBLE FOR RELOCATING FURNITURE, INCLUDING TRANSPORTATION, FOR ALL WORK TO DESIRED VA STORAGE LOCATION. COORDINATE WITH VA AS REQUIRED.
- FIBER-OPTIC CABLING ROUTES AND ASSOCIATED RACEWAYS/ CABLE TRAY ARE DIAGRAMMATICAL. COORDINATE EXACT ROUTING WITH EXISTING CONDITIONS, ARCHITECTURAL FEATURES, MECHANICAL DUCTWORK, PIPING, EQUIPMENT, AND ANY OTHER OBSTRUCTIONS PRIOR TO INSTALLATION.

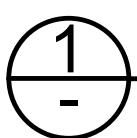
KEY NOTE

- REMOVE AND REPLACE EXISTING CABLE TRAY IN THE AREAS SHOWN AS REQUIRED; IF CABLE TRAY IS NON-EXISTENT, PROVIDE CABLE TRAY AS INDICATED. REFERENCE DETAIL '6' ON SHEET ET503 AND TELECOMMUNICATIONS WAO AND CABLE TRAY SCHEDULE ON SHEET ET701. WHERE WALL EXTENDS TO CEILING, CABLE TRAY SHALL STOP AND TRANSITION TO CONDUIT SLEEVES ((2) 4", MINIMUM) WITH APPROPRIATE FIRE-PROOFING AND CAULKING TO PASS THROUGH WALL. WHERE EXISTING CABLE TRAY AND/OR SLEEVES ARE DISCOVERED, EVALUATE CONDITION AND RACEWAY CAPACITY; IF CABLE TRAY AND/OR SLEEVES APPEAR TO BE REUSABLE, NOTIFY COR FOR POSSIBLE REUSE.
- EXISTING WIRELESS ACCESS POINT TO BE RE-FED WITH CAT6A CABLING.
- FIBER-OPTIC CABLE VERTICAL ROUTING; COORDINATE EXACT LOCATIONS PRIOR TO INSTALLATION. UTILIZE RIGID CONDUIT SLEEVES WITH FIRE PROOFING AND ALL REQUIRED APPURTENANCES AS REQUIRED. REFERENCE DETAIL 2 ON SHEET ET503 FOR ADDITIONAL INFORMATION.
- UTILIZE EXISTING PACS SECURITY HEAD END LOCATION FOR NEW OR RELOCATED PACS SECURITY TR EQUIPMENT. UPGRADE OR MODIFY EXISTING HEAD END LOCATION AS REQUIRED TO PROVIDE A COMPLETE AND FULLY FUNCTIONAL TR PACS SECURITY SYSTEM. PROVIDE EQUIPMENT, RACEWAYS, AND CABLING AS REQUIRED. COORDINATE WITH VA PRIOR TO CONSTRUCTION. CONTRACTOR SHALL VERIFY EXACT HEAD END LOCATION AS REQUIRED.

KEY PLAN



ALL BACKBONE CABLING ROUTES ARE  
DIAGRAMMATICAL; CONTRACTOR SHALL ENSURE A-  
SIDE AND B-SIDE ROUTING IS AS DIVERSE AS  
PRACTICAL. REFERENCE COMMUNICATIONS  
DRAWINGS FOR ALL REQUIRED FIBER-OPTIC  
CABLING.



BLDG 24 - FLOOR 1 - TELECOMMUNICATIONS PLAN  
1/8" = 1'-0"



Revisions:	Date:

CONSULTANT

ARCHITECT/ENGINEER OF RECORD
A/E: SPEES DESIGN BUILD 625 1ST AVE, STE 301 SEATTLE, WA 98104 (206) 590-2118 RAY SPEES

STAMP

Office of Construction and Facilities Management
U.S. Department of Veterans Affairs

Drawing Title
BLDG 24 - FLOOR 1 - TELECOMMUNICATIONS PLAN
Approved:

Phase
CONSTRUCTION DOCUMENTS
FULLY SPRINKLERED

Project Title
EHRM INFRASTRUCTURE UPGRADES
Location
ST. LOUIS VA MEDICAL CENTER - JEFFERSON BARRACKS, MO
Issue Date
03/31/2022
Checked
LRL/WM
Drawn
JGE/JBB

Project Number
657-21-701JB
Building Number
24
Drawing Number
24ET101
321 OF 435



A

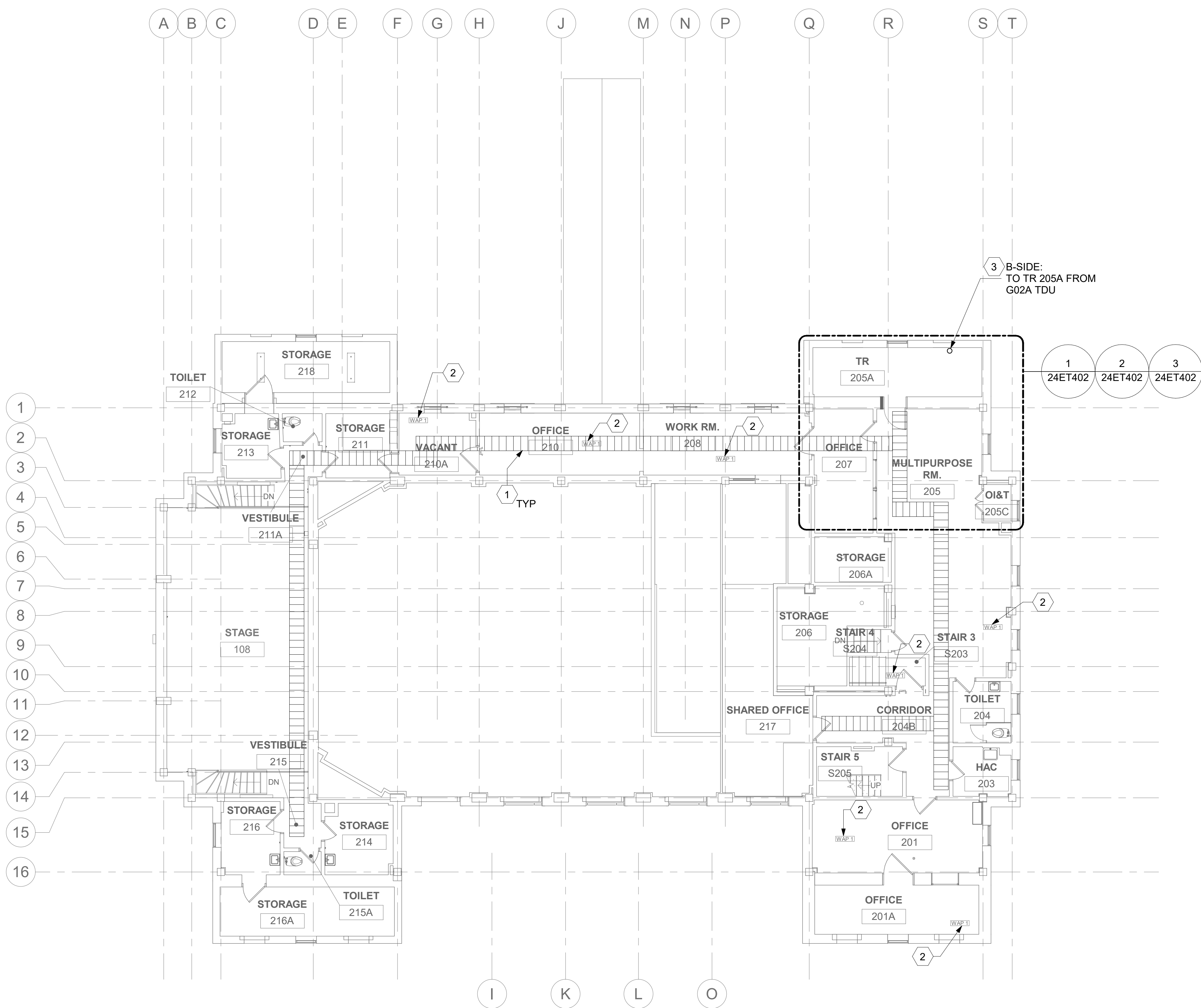
B

C

D

E

F



ALL BACKBONE CABLING ROUTES ARE  
DIAGRAMMATICAL; CONTRACTOR SHALL ENSURE A-SIDE  
AND B-SIDE ROUTING IS AS DIVERSE AS PRACTICAL.  
REFERENCE COMMUNICATIONS DRAWINGS FOR ALL  
REQUIRED FIBER-OPTIC CABLING.

1 BLDG 24 - FLOOR 2 - TELECOMMUNICATIONS PLAN  
1/8" = 1'-0"  
PROJECT NORTH

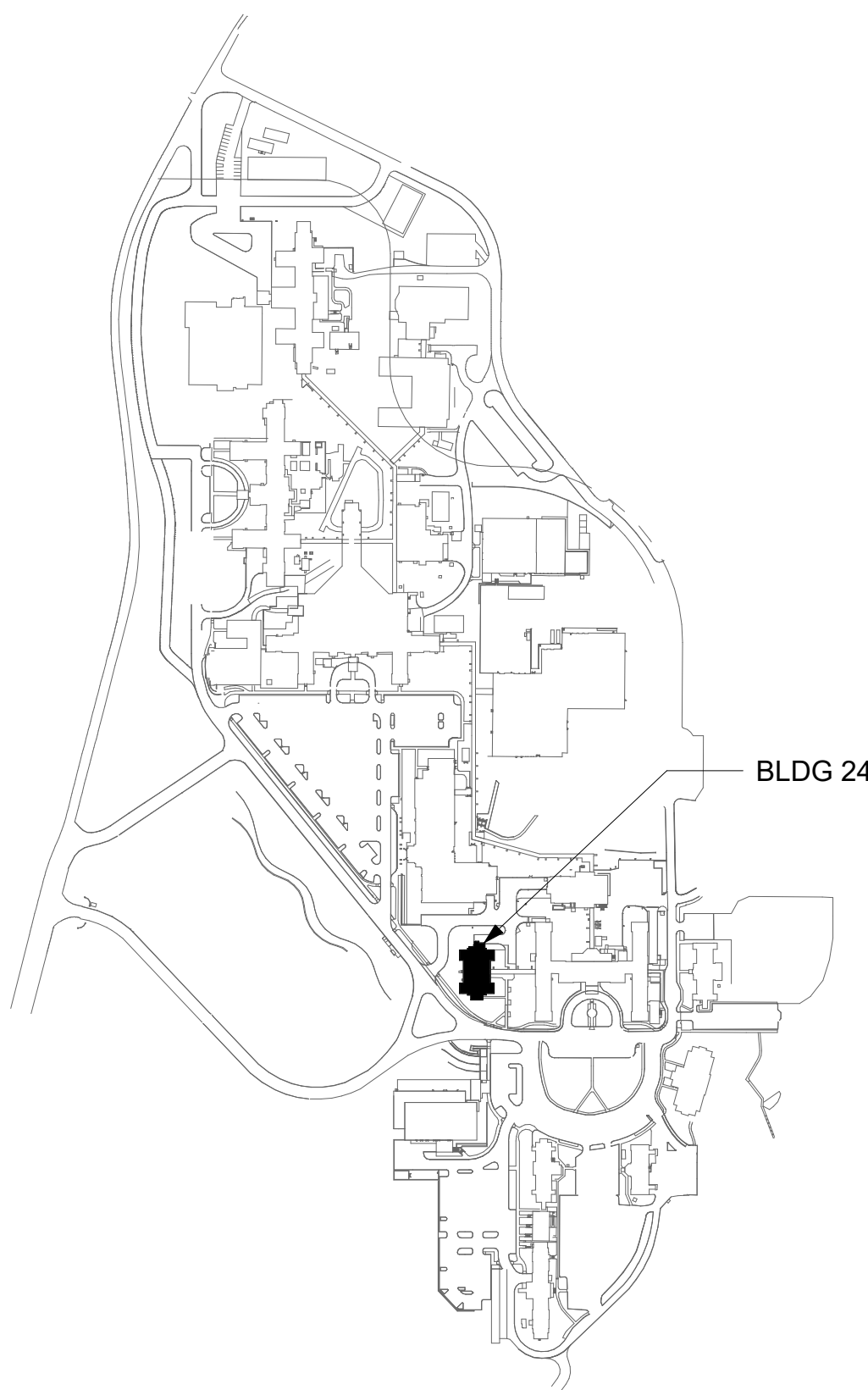
GENERAL NOTES

- ALL EXISTING EQUIPMENT MAY NOT BE SHOWN FOR CLARITY. CONTRACTOR SHALL FIELD VERIFY ALL POWER AND SIGNAL DEVICES AND ASSOCIATED CIRCUITRY AS REQUIRED. ALL RACEWAYS AND CONDUCTORS ASSOCIATED WITH EQUIPMENT TO BE DEMOLISHED SHALL BE DEMOLISHED BACK TO THEIR SOURCE, UNLESS OTHERWISE NOTED.
- PROTECT ALL EXISTING WORK FROM DAMAGE DURING CONSTRUCTION. ANY DAMAGED MATERIALS, SYSTEMS, COMPONENTS, FINISHES BE LIKE, SHALL BE REPAIRED OR REPLACED AT THE EXPENSE OF THE CONTRACTOR TO THE ACCEPTANCE OF THE OWNER.
- SEAL ALL INTERIOR WALL AND CEILING PENETRATIONS TO MATCH EXISTING FIRE RATING OR NEW FIRE RATING, IF REQUIRED. COORDINATE WITH ARCHITECTURAL DRAWINGS AS REQUIRED.
- PROVIDE PULL BOXES SIZED PER ANSI/TIA-569 AT 100-FT INTERVALS IN STRAIGHT CONDUIT RUNS, OR CONDUIT CONTAINING BENDS TOTALING MORE THAN 180 DEGREES.
- PROVIDE CONDUITS AND SLEEVES AS REQUIRED FOR ROUTING AND INSTALLATION OF BACKBONE CABLING. PROVIDE FIRE-STOP MATERIALS TO SEAL IN AND AROUND CONDUIT PER CODE. REFER TO ARCHITECTURAL DRAWINGS FOR PARTITION TYPES AND WALL HEIGHTS.
- CONTRACTOR SHALL BE RESPONSIBLE FOR RELOCATING FURNITURE, INCLUDING TRANSPORTATION, FOR ALL WORK TO DESIRED VA STORAGE LOCATION. COORDINATE WITH VA AS REQUIRED.
- FIBER-OPTIC CABLING ROUTES AND ASSOCIATED RACEWAYS/ CABLE TRAY ARE DIAGRAMMATICAL. COORDINATE EXACT ROUTING WITH EXISTING CONDITIONS, ARCHITECTURAL FEATURES, MECHANICAL DUCTWORK, PIPING, EQUIPMENT, AND ANY OTHER OBSTRUCTIONS PRIOR TO INSTALLATION.

KEY NOTE

- REMOVE AND REPLACE EXISTING CABLE TRAY IN THE AREAS SHOWN AS REQUIRED; IF CABLE TRAY IS NON-EXISTENT, PROVIDE CABLE TRAY AS INDICATED. REFERENCE DETAIL '8' ON SHEET ET503 AND TELECOMMUNICATIONS WAO AND CABLE TRAY SCHEDULE ON SHEET ET701. WHERE WALL EXTENDS TO CEILING, CABLE TRAY SHALL STOP AND TRANSITION TO CONDUIT SLEEVES ((2) 4", MINIMUM) WITH APPROPRIATE FIRE-PROOFING AND CAULKING TO PASS THROUGH WALL. WHERE EXISTING CABLE TRAY AND/OR SLEEVES ARE DISCOVERED, EVALUATE CONDITION AND RACEWAY CAPACITY; IF CABLE TRAY AND/OR SLEEVES APPEAR TO BE REUSABLE, NOTIFY COR FOR POSSIBLE REUSE.
- EXISTING WIRELESS ACCESS POINT TO BE RE-FED WITH CAT6A CABLING.
- FIBER-OPTIC CABLE VERTICAL ROUTING; COORDINATE EXACT LOCATIONS PRIOR TO INSTALLATION. UTILIZE RIGID CONDUIT SLEEVES WITH FIRE PROOFING AND ALL REQUIRED APPURTENANCES AS REQUIRED. REFERENCE DETAIL '2' ON SHEET ET503 FOR ADDITIONAL INFORMATION.

KEY PLAN



--	--	--	--	--	--	--	--	--	--	--	--	--	--	--	--	--	--	--	--	--	--	--	--	--	--	--	--	--	--	--	--	--	--	--	--	--	--	--	--	--	--	--	--	--	--	--	--	--	--	--	--	--	--	--	--	--	--	--	--	--	--	--	--	--	--	--	--	--	--	--	--	--	--	--	--	--	--	--	--	--	--	--	--	--	--	--	--	--	--	--	--	--	--	--	--	--	--	--	--	--	--	--	--	--	--	--	--	--	--	--	--	--	--	--	--	--	--	--	--	--	--	--	--	--	--	--	--	--	--	--	--	--	--	--	--	--	--	--	--	--	--	--	--	--	--	--	--	--	--	--	--	--	--	--	--	--	--	--	--	--	--	--	--	--	--	--	--	--	--	--	--	--	--	--	--	--	--	--	--	--	--	--	--	--	--	--	--	--	--	--	--	--	--	--	--	--	--	--	--	--	--	--	--	--	--	--	--	--	--	--	--	--	--	--	--	--	--	--	--	--	--	--	--	--	--	--	--	--	--	--	--	--	--	--	--	--	--	--	--	--	--	--	--	--	--	--	--	--	--	--	--	--	--	--	--	--	--	--	--	--	--	--	--	--	--	--	--	--	--	--	--	--	--	--	--	--	--	--	--	--	--	--	--	--	--	--	--	--	--	--	--	--	--	--	--	--	--	--	--	--	--	--	--	--	--	--	--	--	--	--	--	--	--	--	--	--	--	--	--	--	--	--	--	--	--	--	--	--	--	--	--	--	--	--	--	--	--	--	--	--	--	--	--	--	--	--	--	--	--	--	--	--	--	--	--	--	--	--	--	--	--	--	--	--	--	--	--	--	--	--	--	--	--	--	--	--	--	--	--	--	--	--	--	--	--	--	--	--	--	--	--	--	--	--	--	--	--	--	--	--	--	--	--	--	--	--	--	--	--	--	--	--	--	--	--	--	--	--	--	--	--	--	--	--	--	--	--	--	--	--	--	--	--	--	--	--	--	--	--	--	--	--	--	--	--	--	--	--	--	--	--	--	--	--	--	--	--	--	--	--	--	--	--	--	--	--	--	--	--	--	--	--	--	--	--	--	--	--	--	--	--	--	--	--	--	--	--	--	--	--	--	--	--	--	--	--	--	--	--	--	--	--	--	--	--	--	--	--	--	--	--	--	--	--	--	--	--	--	--	--	--	--	--	--	--	--	--	--	--	--	--	--	--	--	--	--	--	--	--	--	--	--	--	--	--	--	--	--	--	--	--	--	--	--	--	--	--	--	--	--	--	--	--	--	--	--	--	--	--	--	--	--	--	--	--	--	--	--	--	--	--	--	--	--	--	--	--	--	--	--	--	--	--	--	--	--	--	--	--	--	--	--	--	--	--	--	--	--	--	--	--	--	--	--	--	--	--	--	--	--	--	--	--	--	--	--	--	--	--	--	--	--	--	--	--	--	--	--	--	--	--	--	--	--	--	--	--	--	--	--	--	--	--	--	--	--	--	--	--	--	--	--	--	--	--	--	--	--	--	--	--	--	--	--	--	--	--	--	--	--	--	--	--	--	--	--	--	--	--	--	--	--	--	--	--	--	--	--	--	--	--	--	--	--	--	--	--	--	--	--	--	--	--	--	--	--	--	--	--	--	--	--	--	--	--	--	--	--	--	--	--	--	--	--	--	--	--	--	--	--	--	--	--	--	--	--	--	--	--	--	--	--	--	--	--	--	--	--	--	--	--	--	--	--	--	--	--	--	--	--	--	--	--	--	--	--	--	--	--	--	--	--	--	--	--	--	--	--	--	--	--	--	--	--	--	--	--	--	--	--	--	--	--	--	--	--	--	--	--	--	--	--	--	--	--	--	--	--	--	--	--	--	--	--	--	--	--	--	--	--	--	--	--	--	--	--	--	--	--	--	--	--	--	--	--	--	--	--	--	--	--	--	--	--	--	--	--	--	--	--	--	--	--	--	--	--	--	--	--	--	--	--	--	--	--	--	--	--	--	--	--	--	--	--	--	--	--	--	--	--	--	--	--	--	--	--	--	--	--	--	--	--	--	--	--	--	--	--	--	--	--	--	--	--	--	--	--	--	--	--	--	--	--	--	--	--	--	--	--	--	--	--	--	--	--	--	--	--	--	--	--	--	--	--	--	--	--	--	--	--	--	--	--	--	--	--	--	--	--	--	--	--	--	--	--	--	--	--	--	--	--	--	--	--	--	--	--	--	--	--	--	--	--	--	--	--	--	--	--	--	--	--	--	--	--	--	--	--	--	--	--	--	--	--	--	--	--	--	--	--	--	--	--	--	--	--	--	--	--	--	--	--	--	--	--	--	--	--	--	--	--	--	--	--	--	--	--	--	--	--	--	--	--	--	--	--	--	--	--	--	--	--	--	--	--	--	--	--	--	--	--	--	--	--	--	--	--	--	--	--	--	--	--	--	--	--	--	--	--	--	--	--	--	--	--	--	--	--	--	--	--	--	--	--	--	--	--	--	--	--	--	--	--	--	--	--	--	--	--	--	--	--	--	--	--	--	--	--	--	--	--	--	--	--	--	--	--	--	--	--	--	--	--	--	--	--	--	--	--	--	--	--	--	--	--	--	--	--	--	--	--	--	--	--	--	--	--	--	--	--	--	--	--	--	--	--	--	--	--	--	--	--	--	--	--	--	--	--	--	--	--	--	--	--	--	--	--	--	--	--	--	--	--	--	--	--	--	--	--	--	--	--	--	--	--	--	--	--	--	--	--	--	--	--	--	--	--	--	--	--	--	--	--	--	--	--	--	--	--	--	--	--	--	--	--	--	--	--	--	--	--	--	--	--	--	--	--	--	--	--	--	--	--	--	--	--	--	--	--	--	--	--	--	--	--	--	--	--	--	--	--	--	--	--	--	--	--	--	--	--	--	--	--	--	--	--	--	--	--	--	--	--	--	--	--	--	--	--	--	--	--	--	--	--	--	--	--	--	--	--	--	--	--	--	--	--	--	--	--	--	--	--	--	--	--	--	--	--	--	--	--	--	--	--	--	--	--	--	--	--	--	--	--	--	--	--	--	--	--	--	--	--	--	--	--	--	--	--	--	--	--	--	--	--	--	--	--	--	--	--	--	--	--	--	--	--	--	--	--	--	--	--	--	--	--	--	--	--	--	--	--	--	--	--	--	--	--	--	--	--	--	--	--	--	--	--	--	--	--	--	--	--	--	--	--	--	--	--	--	--	--	--	--	--	--	--	--	--	--	--	--	--	--	--	--	--	--	--	--	--	--	--	--	--	--	--	--	--	--	--	--	--	--	--	--	--	--	--	--	--	--	--	--	--	--	--	--	--	--	--	--	--	--	--	--	--	--	--	--	--	--	--	--	--	--	--	--	--	--	--	--	--	--	--	--	--	--	--	--	--	--	--	--	--	--	--	--	--	--	--	--	--	--	--	--	--	--	--	--	--	--	--	--	--	--	--	--	--	--	--	--	--	--	--	--	--	--	--	--	--	--	--	--	--	--	--	--	--	--	--	--	--	--	--	--	--	--	--	--	--	--	--	--	--	--	--	--	--	--	--	--	--	--	--	--	--	--	--	--	--	--	--	--	--	--	--	--	--	--	--	--	--	--	--	--	--	--	--	--	--	--	--	--	--	--	--	--	--	--	--	--	--	--	--	--	--	--	--	--	--	--	--	--	--	--	--	--	--	--	--	--	--	--	--	--	--	--	--	--	--	--	--	--	--	--	--	--	--	--	--	--	--	--	--	--	--	--	--	--	--	--	--	--	--	--	--	--	--	--	--	--	--	--	--	--	--	--	--	--	--	--	--	--	--	--	--	--	--	--	--	--	--	--	--	--	--	--	--	--	--	--	--	--	--	--	--	--	--	--	--	--	--	--	--	--	--	--	--	--	--	--	--	--	--	--	--	--	--	--	--	--	--	--	--	--	--	--	--	--	--	--	--	--	--	--	--	--	--	--	--	--	--	--	--	--	--	--	--	--	--	--	--	--	--	--	--	--	--	--	--	--	--	--	--	--	--	--	--	--	--	--	--	--	--	--	--	--	--	--	--	--	--	--	--	--	--	--	--	--	--	--



A

B

C

D

E

F

A

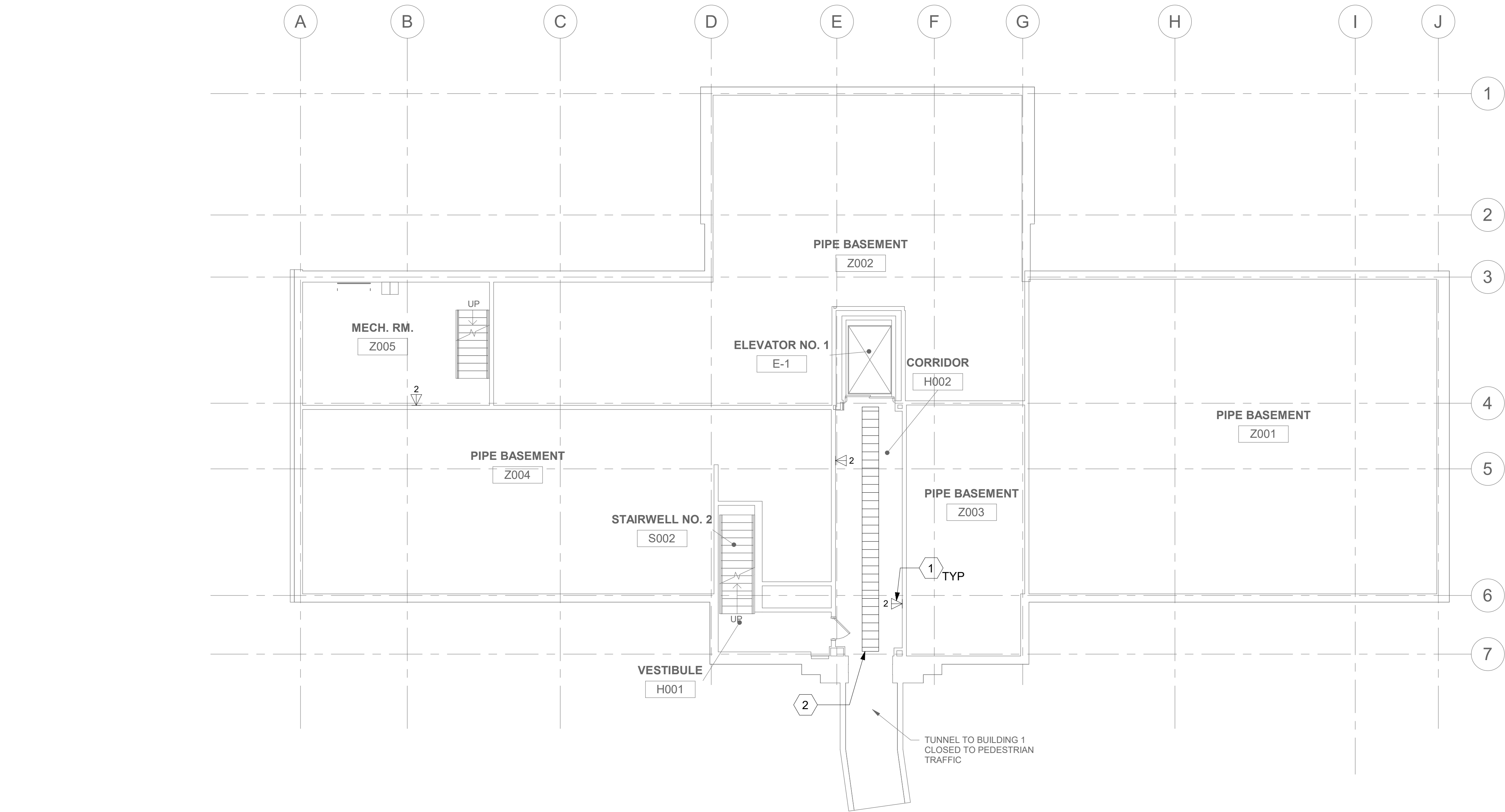
B

C

D

E

F



DATA OUTLETS AND DEVICES IN THIS AREA SHALL BE SERVED FROM TELECOMMUNICATION ROOM 117A LOCATED ON FLOOR 1.

1 BLDG 25 - FLOOR 0 - TELECOMMUNICATIONS PLAN  
1/8" = 1'-0"

CONSULTANT

ARCHITECT/ENGINEER OF RECORD

STAMP

Office of Construction and Facilities Management

U.S. Department of Veterans Affairs

Drawing Title

BLDG 25 - FLOOR 0 - TELECOMMUNICATIONS PLAN

Approved:

Phase

CONSTRUCTION DOCUMENTS

Project Title

EHRM INFRASTRUCTURE UPGRADES

Project Number

657-21-701JB

Building Number

25

Drawing Number

25ET100

323 OF 435

Location

ST. LOUIS VA MEDICAL CENTER - JEFFERSON BARRACKS, MO

Issue Date

03/31/2022

Checked

LRL/WM

Drawn

JGE/JBB



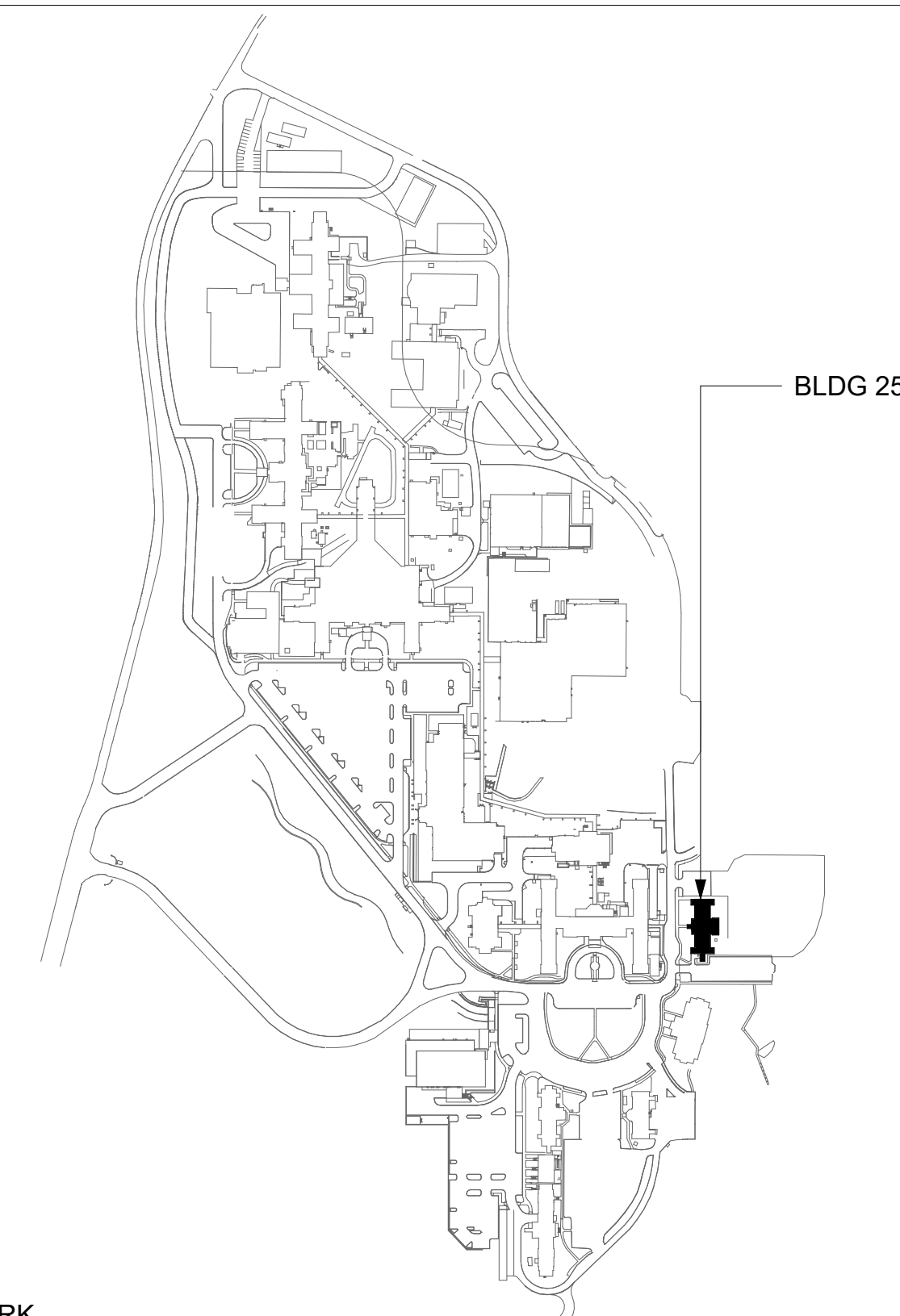
## GENERAL NOTES

1. ALL EXISTING EQUIPMENT MAY NOT BE SHOWN FOR CLARITY. CONTRACTOR SHALL FIELD VERIFY ALL POWER AND SIGNAL DEVICES AND ASSOCIATED CIRCUITRY AS REQUIRED. ALL RACEWAYS AND CONDUCTORS ASSOCIATED WITH EQUIPMENT TO BE DEMOLISHED SHALL BE DEMOLISHED BACK TO THEIR SOURCE, UNLESS OTHERWISE NOTED.
2. PROTECT ALL EXISTING WORK FROM DAMAGE DURING CONSTRUCTION. ANY DAMAGED MATERIALS, SYSTEMS, COMPONENTS, FINISHES BE LIKE, SHALL BE REPAIRED OR REPLACED AT THE EXPENSE OF THE CONTRACTOR TO THE ACCEPTANCE OF THE OWNER.
3. SEAL ALL INTERIOR WALL AND CEILING PENETRATIONS TO MATCH EXISTING FIRE RATING OR NEW FIRE RATING, IF REQUIRED. COORDINATE WITH ARCHITECTURAL DRAWINGS AS REQUIRED.
4. ALL TELECOMMUNICATIONS CABLING CATEGORY 6 AND BELOW SHALL BE UPGRADED WITH CAT6A PORTS AND CABLE QUANTITIES INDICATED, UNLESS NOTED OTHERWISE.
5. TELECOMMUNICATIONS CABLES SHALL BE ROUTED IN EXISTING PATHWAY VACATED BY EXISTING CABLING. PROVIDE RACEWAYS TO EXTEND TO ASSOCIATED TR.
6. A TELECOMMUNICATIONS OUTLET UPGRADE SHALL INCLUDE, BUT IS NOT LIMITED TO REMOVING AND DISPOSING EXISTING DEVICES AND CABLES; PROVIDING ALL LABOR, MATERIALS, TOOLS, TEST INSTRUMENTS, AND CONSUMABLES REQUIRED FOR THE INSTALLATION, TERMINATION, TESTING, LABELING, AND CERTIFICATION OF A FULLY FUNCTIONAL CATEGORY 6A OUTLET WITH THE PORT QUANTITY INDICATED.
7. CONTRACTOR SHALL PROVIDE, INSTALL, AND TERMINATE HORIZONTAL CAT6A CABLING FROM EACH WAO (WORK AREA OUTLET) TO ITS RESPECTIVE TR.
8. PROVIDE PULL BOXES SIZED PER ANSI/TIA-569 AT 100-FT INTERVALS IN STRAIGHT CONDUIT RUNS, OR CONDUIT CONTAINING BENDS TOTALING MORE THAN 180 DEGREES.
9. PROVIDE CONDUITS AND SLEEVES AS REQUIRED FOR ROUTING AND INSTALLATION OF HORIZONTAL AND BACKBONE CABLING. PROVIDE FIRE-STOP MATERIALS TO SEAL IN AND AROUND CONDUIT PER CODE. REFER TO ARCHITECTURAL DRAWINGS FOR PARTITION TYPES AND WALL HEIGHTS.
10. OUTLET LOCATIONS ARE APPROXIMATE. DETERMINE EXACT LOCATIONS IN FIELD; DOCUMENT VARIANCES ON AS-BUILT DRAWINGS.
11. CONTRACTOR SHALL BE RESPONSIBLE FOR RELOCATING FURNITURE, INCLUDING TRANSPORTATION, FOR ALL WORK TO DESIRED VA STORAGE LOCATION. COORDINATE WITH VA AS REQUIRED.
12. ALL DATA CABLING SHALL BE SEGREGATED FROM OTHER SPECIAL SYSTEMS INCLUDING, BUT NOT LIMITED TO, SECURITY, FIRE ALARM, AND NURSE CALL SYSTEMS. WHEN ROUTED THROUGH CONDUIT, DATA CABLING SHALL HAVE ITS OWN RACEWAY. WHEN DATA CABLING IS ROUTED THROUGH A COMMON SPECIAL SYSTEMS CABLE TRAY, CABLING SHALL BE BUNDLED WITH LIKE SYSTEMS; ADDITIONALLY, CABLE TRAYS SHALL BE PROVIDED WITH TRAY DIVIDERS AS REQUIRED TO SEGREGATE SYSTEMS FROM ONE ANOTHER.
13. FIBER-OPTIC CABLING ROUTES AND ASSOCIATED RACEWAYS/CABLE TRAY ARE DIAGRAMMATICAL. COORDINATE EXACT ROUTING WITH EXISTING CONDITIONS, ARCHITECTURAL FEATURES, MECHANICAL DUCTWORK, PIPING, EQUIPMENT, AND ANY OTHER OBSTRUCTIONS PRIOR TO INSTALLATION.

## KEY NOTES

- 1 PROVIDE TELECOMMUNICATIONS OUTLET WITH PORT QUANTITY SHOWN TO REPLACE EXISTING TELECOMMUNICATIONS OUTLET; EXISTING OUTLET CONDUIT SHALL REMAIN AND BE UTILIZED TO FEED NEW CABLING. REFERENCE SHEET DETAIL '1' ON SHEET ET503 AND THE GENERAL NOTES ON THIS SHEET FOR ADDITIONAL INFORMATION. COORDINATE WITH VA FOR EXACT OUTLET PLACEMENT.
- 2 EXISTING WIRELESS ACCESS POINT RE-FED WITH CAT6A CABLING.
- 3 REMOVE AND REPLACE EXISTING CABLE TRAY IN THE AREAS SHOWN AS REQUIRED; IF CABLE TRAY IS NON-EXISTENT, PROVIDE CABLE TRAY AS INDICATED. REFERENCE DETAIL '6' ON SHEET ET503 AND TELECOMMUNICATIONS WAO AND CABLE TRAY SCHEDULE ON SHEET ET701. WHERE WALL EXTENDS TO CEILING, CABLE TRAY SHALL STOP AND TRANSITION TO CONDUIT SLEEVES (2) 4", MINIMUM] WITH APPROPRIATE FIRE-PROOFING AND CAULKING TO PASS THROUGH WALL. WHERE EXISTING CABLE TRAY AND/OR SLEEVES ARE DISCOVERED, EVALUATE CONDITION AND RACEWAY CAPACITY; IF CABLE TRAY AND/OR SLEEVES APPEAR TO BE REUSABLE, NOTIFY COR FOR POSSIBLE REUSE.
- 4 FIBER-OPTIC CABLE VERTICAL ROUTING; COORDINATE EXACT LOCATIONS PRIOR TO INSTALLATION. UTILIZE RIGID CONDUIT SLEEVES WITH FIRE PROOFING AND ALL REQUIRED APPURTENANCES AS REQUIRED. REFERENCE DETAIL 2 ON SHEET ET503 FOR ADDITIONAL INFORMATION.
- 5 FIBER-OPTIC CABLE HORIZONTAL ROUTING SHALL BE CONCEALED ABOVE DROP CEILING WHEREVER POSSIBLE. UTILIZE CABLE TRAY AS APPLICABLE. PROVIDE CONDUIT SLEEVE WITH FIREPROOFING AS REQUIRED WHERE WALL PENETRATIONS ARE REQUIRED. REFERENCE DETAIL 2 ON SHEET ET503 FOR ADDITIONAL INFORMATION.
- 6 UTILIZE EXISTING PACS SECURITY HEAD END LOCATION FOR NEW OR RELOCATED PACS SECURITY TR EQUIPMENT. UPGRADE OR RELOCATE EXISTING HEAD END LOCATION AS REQUIRED TO PROVIDE A COMPLETE AND FULLY FUNCTIONAL TR PACS SECURITY SYSTEM. PROVIDE EQUIPMENT, RACEWAYS, AND CABLING AS REQUIRED. COORDINATE WITH VA PRIOR TO CONSTRUCTION. CONTRACTOR SHALL VERIFY EXACT HEAD END LOCATION AS REQUIRED.

## KEY PLAN



**DATA OUTLETS AND DEVICES IN THIS AREA SHALL BE SERVED FROM TELECOMMUNICATION ROOM 117A.**

**ALL BACKBONE CABLING ROUTES ARE DIAGRAMMATICAL; CONTRACTOR SHALL ENSURE A-SIDE AND B-SIDE ROUTING IS AS DIVERSE AS PRACTICAL. REFERENCE COMMUNICATIONS DRAWINGS FOR ALL REQUIRED FIBER-OPTIC CABLING.**

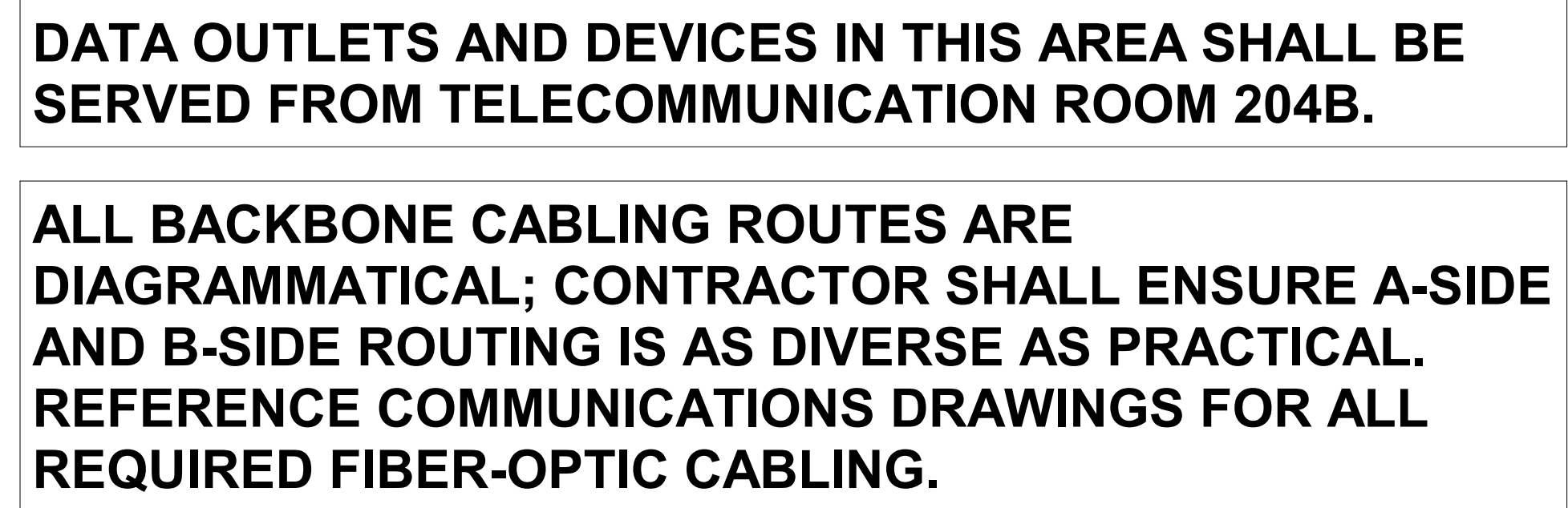
**SIDE-B FIBER-OPTIC BACKBONE:  
REFERENCE COMMUNICATION SHEETS  
FOR ADDITIONAL INFORMATION  
REGARDING HANDHOLE, CONDUIT,  
BUILDING PENETRATIONS, FIBER-OPTIC  
CABLING, AND RACEWAY INFORMATION.**

EXISTING SIDE-A FIBER-OPTIC BACKBONE BUILDING  
ENTRY POINT (APPROXIMATE LOCATION). ROUTE  
FIBER-OPTIC CABLES TO TRS AS INDICATED ON  
COMMUNICATIONS DRAWINGS; REFERENCE  
COMMUNICATIONS DRAWINGS FOR ALL FIBER-OPTIC  
CABLING, RACEWAY TYPES, SPECIFICATIONS, AND  
RATINGS. REFERENCE KEY NOTES ON THIS SHEET  
REGARDING CABLE TRAY AND VERTICAL/HORIZONTAL  
ROUTING FOR ADDITIONAL FIBER BACKBONE CABLING  
REQUIREMENTS.

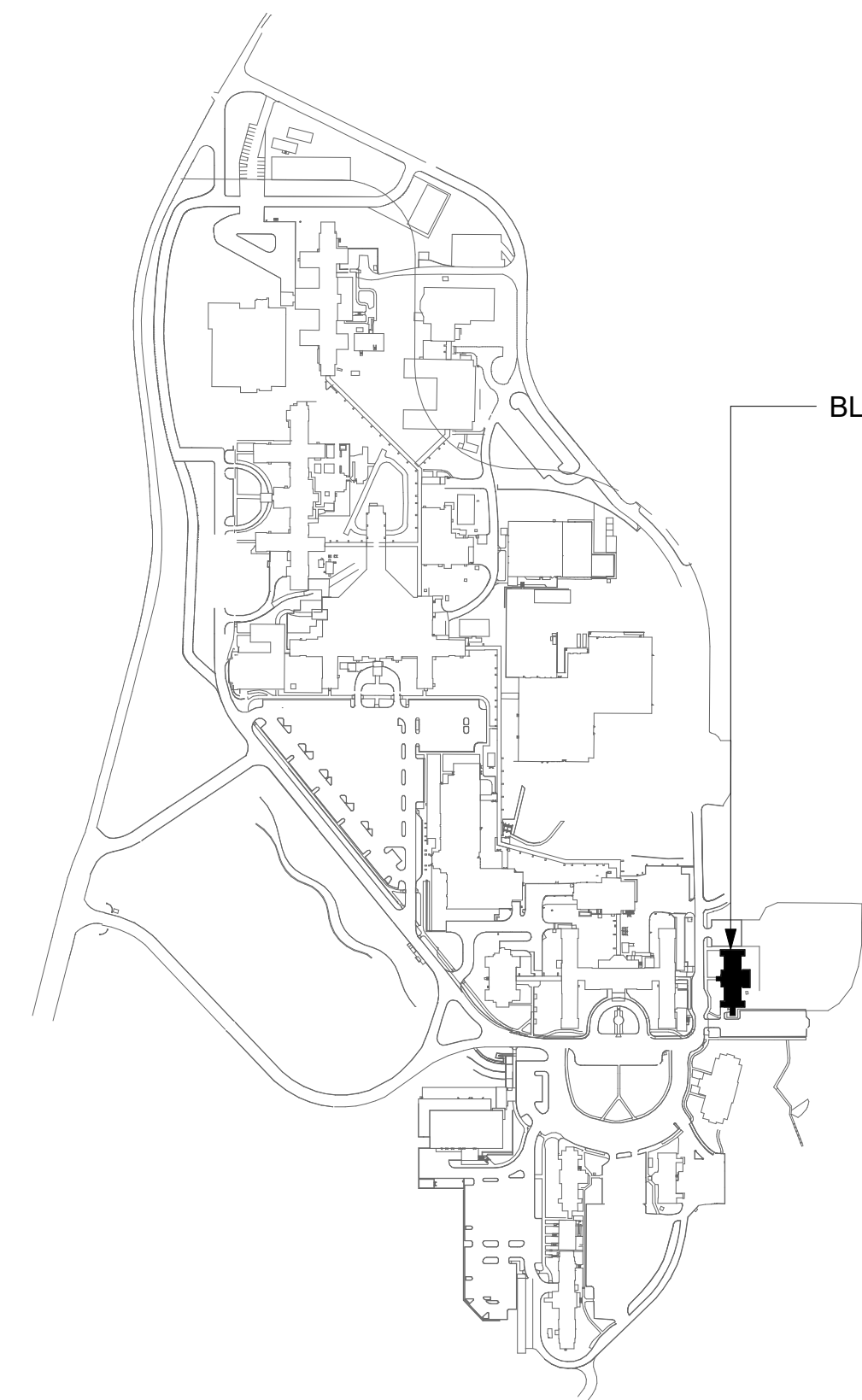



[illegible]





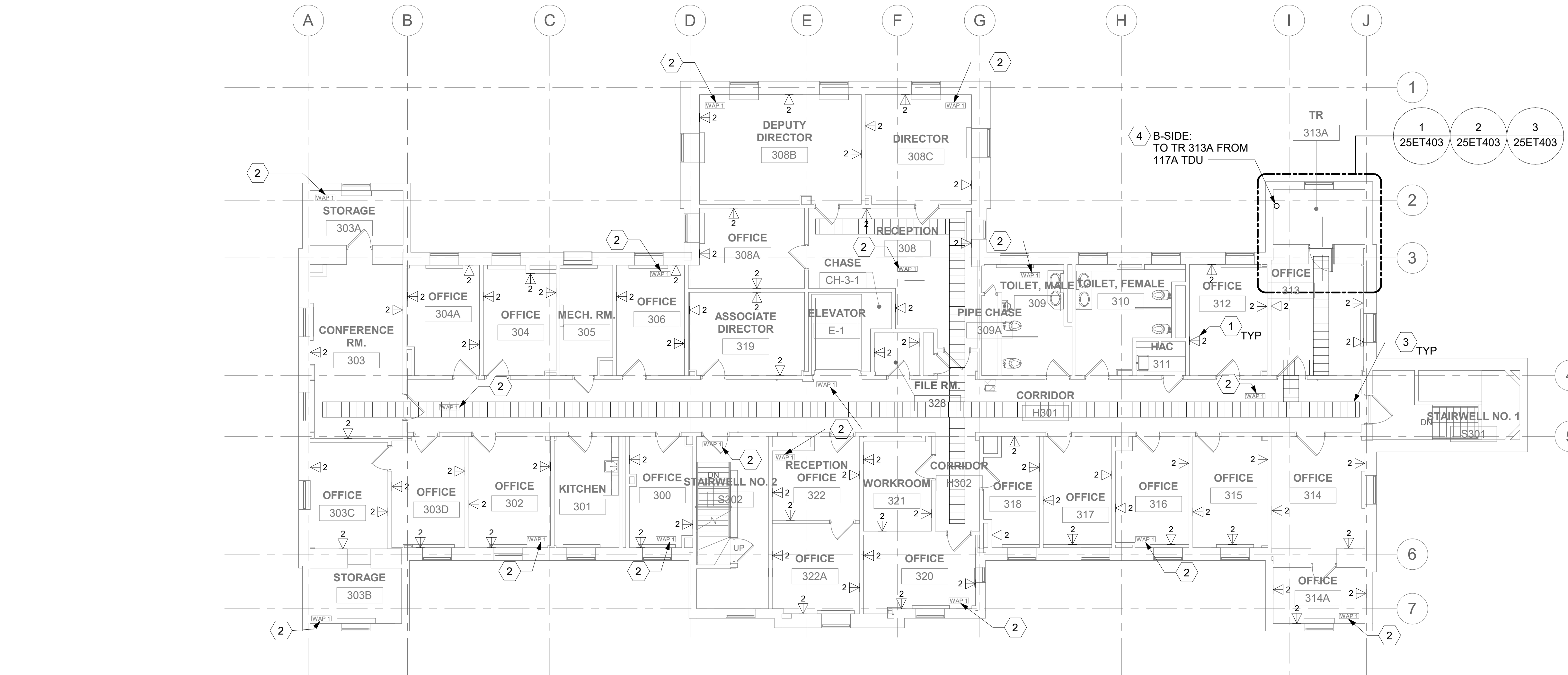
1 BLDG 25 - FLOOR 2 - TELECOMMUNICATIONS PLAN  
- 1/8" = 1'-0" 0' 4' 8' 12'



AREA OF WORK

[illegible]





DATA OUTLETS AND DEVICES IN THIS AREA SHALL BE SERVED FROM TELECOMMUNICATION ROOM 313A.

ALL BACKBONE CABLING ROUTES ARE DIAGRAMMATICAL; CONTRACTOR SHALL ENSURE A-SIDE AND B-SIDE ROUTING IS AS DIVERSE AS PRACTICAL. REFERENCE COMMUNICATIONS DRAWINGS FOR ALL REQUIRED FIBER-OPTIC CABLING.

**1** BLDG 25 - FLOOR 3 - TELECOMMUNICATIONS PLAN  
1/8" = 1'-0"  
PROJECT NORTH

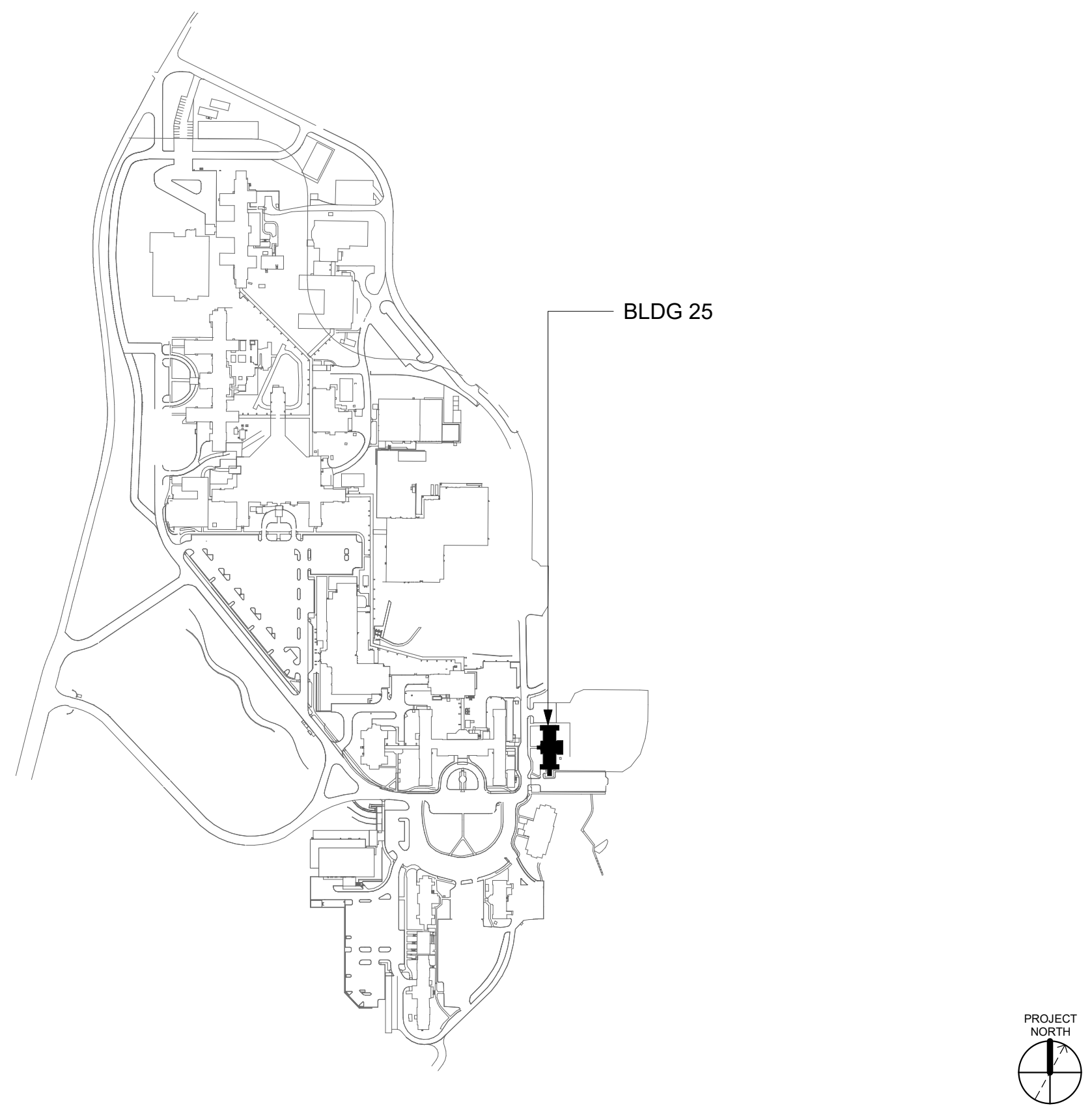
GENERAL NOTES




- ALL EXISTING EQUIPMENT MAY NOT BE SHOWN FOR CLARITY. CONTRACTOR SHALL FIELD VERIFY ALL POWER AND SIGNAL DEVICES AND ASSOCIATED CIRCUITRY AS REQUIRED. ALL RACEWAYS AND CONDUCTORS ASSOCIATED WITH EQUIPMENT TO BE DEMOLISHED SHALL BE DEMOLISHED BACK TO THEIR SOURCE, UNLESS OTHERWISE NOTED.
- PROTECT ALL EXISTING WORK FROM DAMAGE DURING CONSTRUCTION. ANY DAMAGED MATERIALS, SYSTEMS, COMPONENTS, FINISHES BE LIKE, SHALL BE REPAIRED OR REPLACED AT THE EXPENSE OF THE CONTRACTOR TO THE ACCEPTANCE OF THE OWNER.
- SEAL ALL INTERIOR WALL AND CEILING PENETRATIONS TO MATCH EXISTING FIRE RATING OR NEW FIRE RATING, IF REQUIRED. COORDINATE WITH ARCHITECTURAL DRAWINGS AS REQUIRED.
- ALL TELECOMMUNICATIONS CABLING CATEGORY 6 AND BELOW SHALL BE UPGRADED WITH CAT6A PORTS AND CABLE QUANTITIES INDICATED, UNLESS NOTED OTHERWISE.
- TELECOMMUNICATIONS CABLES SHALL BE ROUTED IN EXISTING PATHWAY VACATED BY EXISTING CABLING. PROVIDE RACEWAYS TO EXTEND TO ASSOCIATED TR.
- A TELECOMMUNICATIONS OUTLET UPGRADE SHALL INCLUDE, BUT IS NOT LIMITED TO REMOVING AND DISPOSING EXISTING DEVICES AND CABLES; PROVIDING ALL LABOR, MATERIALS, TOOLS, TEST INSTRUMENTS, AND CONSUMABLES REQUIRED FOR THE INSTALLATION, TERMINATION, TESTING, LABELING, AND CERTIFICATION OF A FULLY FUNCTIONAL CATEGORY 6A OUTLET WITH THE PORT QUANTITY INDICATED.
- CONTRACTOR SHALL PROVIDE, INSTALL, AND TERMINATE HORIZONTAL CAT6A CABLING FROM EACH WAO (WORK AREA OUTLET) TO ITS RESPECTIVE TR.
- PROVIDE PULL BOXES SIZED PER ANSI/TIA-569 AT 100-FT INTERVALS IN STRAIGHT CONDUIT RUNS, OR CONDUIT CONTAINING BENDS TOTALING MORE THAN 180 DEGREES.
- PROVIDE CONDUITS AND SLEEVES AS REQUIRED FOR ROUTING AND INSTALLATION OF HORIZONTAL AND BACKBONE CABLING. PROVIDE FIRE-STOP MATERIALS TO SEAL IN AND AROUND CONDUIT PER CODE. REFER TO ARCHITECTURAL DRAWINGS FOR PARTITION TYPES AND WALL HEIGHTS.
- OUTLET LOCATIONS ARE APPROXIMATE. DETERMINE EXACT LOCATIONS IN FIELD; DOCUMENT VARIANCES ON AS-BUILT DRAWINGS.
- CONTRACTOR SHALL BE RESPONSIBLE FOR RELOCATING FURNITURE, INCLUDING TRANSPORTATION, FOR ALL WORK TO DESIRED VA STORAGE LOCATION. COORDINATE WITH VA AS REQUIRED.
- ALL DATA CABLING SHALL BE SEGREGATED FROM OTHER SPECIAL SYSTEMS INCLUDING, BUT NOT LIMITED TO, SECURITY, FIRE ALARM, AND NURSE CALL SYSTEMS. WHEN ROUTED THROUGH CONDUIT, DATA CABLING SHALL HAVE ITS OWN RACEWAY. WHEN DATA CABLING IS ROUTED THROUGH A COMMON SPECIAL SYSTEMS CABLE TRAY, CABLING SHALL BE BUNDLED WITH LIKE SYSTEMS; ADDITIONALLY, CABLE TRAYS SHALL BE PROVIDED WITH TRAY DIVIDERS AS REQUIRED TO SEGREGATE SYSTEMS FROM ONE ANOTHER.
- FIBER-OPTIC CABLING ROUTES AND ASSOCIATED RACEWAYS/CABLE TRAY ARE DIAGRAMMATICAL. COORDINATE EXACT ROUTING WITH EXISTING CONDITIONS, ARCHITECTURAL FEATURES, MECHANICAL DUCTWORK, PIPING, EQUIPMENT, AND ANY OTHER OBSTRUCTIONS PRIOR TO INSTALLATION.

KEY NOTES

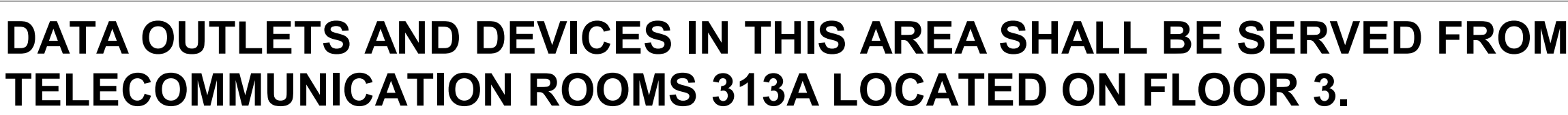
- PROVIDE TELECOMMUNICATIONS OUTLET WITH PORT QUANTITY SHOWN TO REPLACE EXISTING TELECOMMUNICATIONS OUTLET; EXISTING OUTLET CONDUIT SHALL REMAIN AND BE UTILIZED TO FEED NEW CABLING; REFERENCE SHEET DETAIL '1' ON SHEET ET503 AND THE GENERAL NOTES ON THIS SHEET FOR ADDITIONAL INFORMATION. COORDINATE WITH VA FOR EXACT OUTLET PLACEMENT.
- EXISTING WIRELESS ACCESS POINT RE-FED WITH CAT6A CABLING.
- REMOVE AND REPLACE EXISTING CABLE TRAY IN THE AREAS SHOWN AS REQUIRED; IF CABLE TRAY IS NON-EXISTENT, PROVIDE CABLE TRAY AS INDICATED. REFERENCE DETAIL '6' ON SHEET ET503 AND TELECOMMUNICATIONS WAO AND CABLE TRAY SCHEDULE ON SHEET ET701. WHERE WALL EXTENDS TO CEILING, CABLE TRAY SHALL STOP AND TRANSITION TO CONDUIT SLEEVES (2) 4", MINIMUM WITH APPROPRIATE FIRE-PROOFING AND CAULKING TO PASS THROUGH WALL. WHERE EXISTING CABLE TRAY AND/OR SLEEVES ARE DISCOVERED, EVALUATE CONDITION AND RACEWAY CAPACITY; IF CABLE TRAY AND/OR SLEEVES APPEAR TO BE REUSABLE, NOTIFY COR FOR POSSIBLE REUSE.
- FIBER-OPTIC CABLE VERTICAL ROUTING; COORDINATE EXACT LOCATIONS PRIOR TO INSTALLATION. UTILIZE RIGID CONDUIT SLEEVES WITH FIRE PROOFING AND ALL REQUIRED APPURTENANCES AS REQUIRED. REFERENCE DETAIL 2 ON SHEET ET503 FOR ADDITIONAL INFORMATION.

KEY PLAN

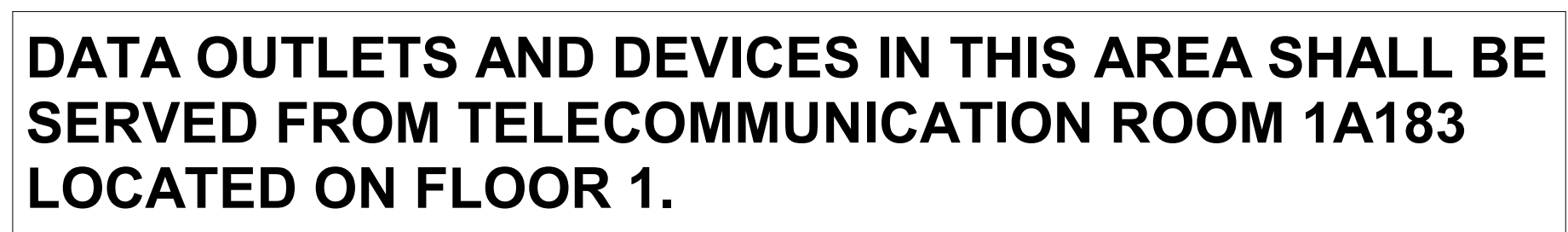


		CONSULTANT	ARCHITECT/ENGINEER OF RECORD	STAMP	Office of Construction and Facilities Management	Drawing Title BLDG 25 - FLOOR 3 - TELECOMMUNICATIONS PLAN	Phase CONSTRUCTION DOCUMENTS	Project Title EHRM INFRASTRUCTURE UPGRADES	Project Number 657-21-701JB				
										Building Number 25			
			<div>A/E: SPEES DESIGN BUILD 625 1ST AVE, STE 301 SEATTLE, WA 98104 (206) 590-2118 RAY SPEES</div> <div> SPEESDESIGNBUILD</div>	<div></div> <div> U.S. Department of Veterans Affairs</div>									
Revisions:		Date:				Approved:		FULLY SPRINKLERED	Location ST. LOUIS VA MEDICAL CENTER - JEFFERSON BARRACKS, MO	Issue Date 03/31/2022	Checked LRL/WM	Drawn JGE/JBB	Drawing Number 25ET103 326 OF 435





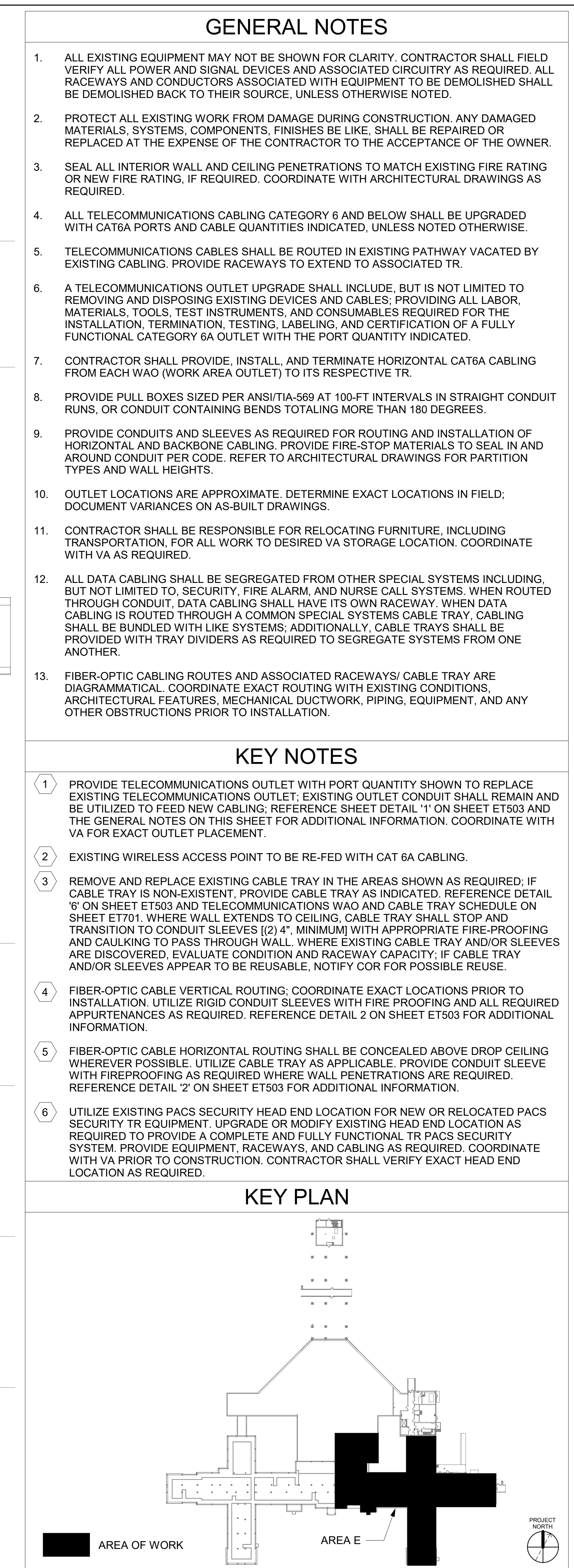







- 

VA FORM 08-6231





		CONSULTANT		ARCHITECT/ENGINEER OF RECORD		STAMP		Drawing Title		Phase		Project Title		Project Number	
				A/E: <b>SPEES DESIGN BUILD</b> 625 1ST AVE, STE 301 SEATTLE, WA 98104 (206) 590-2118 RAY SPEES				BLDG 51 - FLOOR 0 - AREA E - TELECOMMUNICATIONS PLAN		CONSTRUCTION DOCUMENTS		EHRM INFRASTRUCTURE UPGRADES		657-21-701JB	
								Approved:		FULLY SPRINKLERED		Location ST. LOUIS VA MEDICAL CENTER - JEFFERSON BARRACKS, MO		Building Number 51	
Revisions:		Date:										Issue Date 03/31/2022		Checked LRL/WM	
												Drawn JGE/JBB		Drawing Number <b>51ET100b</b> 329 OF 435	



A

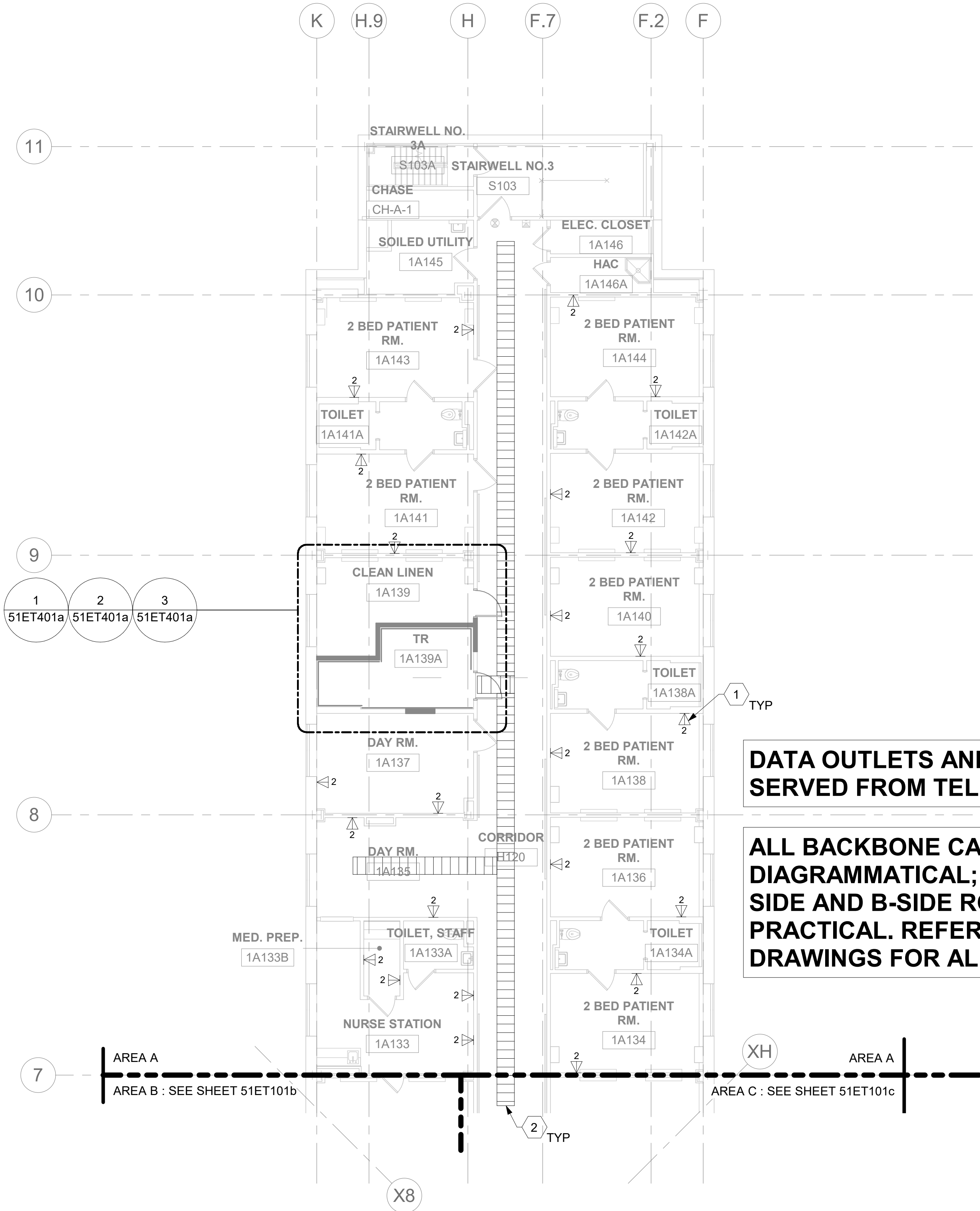
B

C

D

E

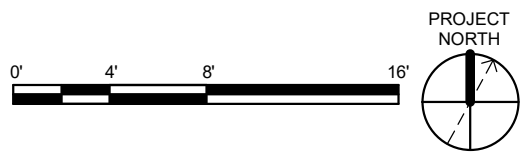
F



DATA OUTLETS AND DEVICES IN THIS AREA SHALL BE SERVED FROM TELECOMMUNICATION ROOM 1A139A

ALL BACKBONE CABLING ROUTES ARE DIAGRAMMATICAL; CONTRACTOR SHALL ENSURE A-SIDE AND B-SIDE ROUTING IS AS DIVERSE AS PRACTICAL. REFERENCE COMMUNICATIONS DRAWINGS FOR ALL REQUIRED FIBER-OPTIC CABLING.

1 BLDG 51 - FLOOR 1 - AREA A - TELECOMMUNICATIONS PLAN  
1/8" = 1'-0"



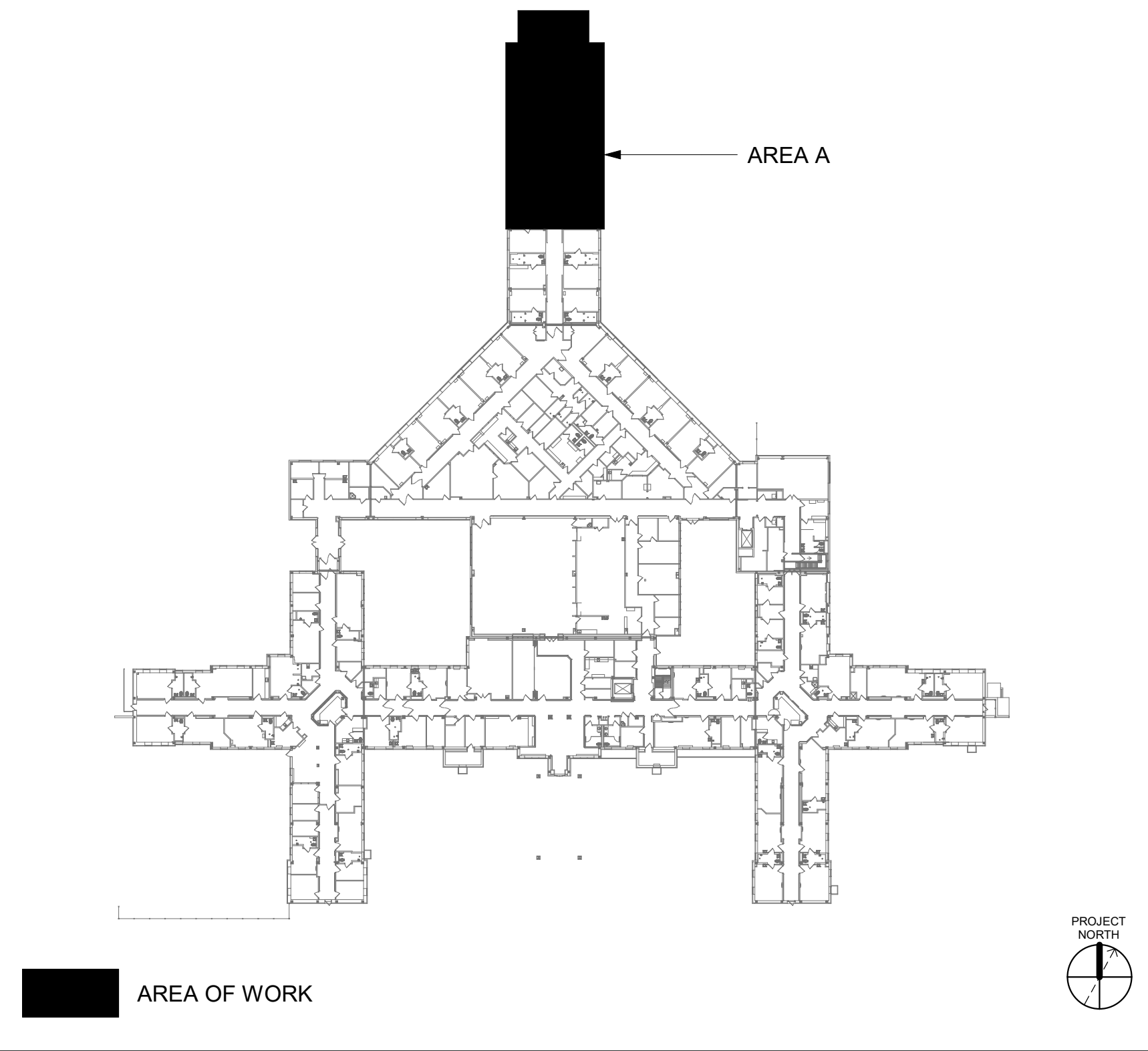
GENERAL NOTES

- ALL EXISTING EQUIPMENT MAY NOT BE SHOWN FOR CLARITY. CONTRACTOR SHALL FIELD VERIFY ALL POWER AND SIGNAL DEVICES AND ASSOCIATED CIRCUITRY AS REQUIRED. ALL RACEWAYS AND CONDUCTORS ASSOCIATED WITH EQUIPMENT TO BE DEMOLISHED SHALL BE DEMOLISHED BACK TO THEIR SOURCE, UNLESS OTHERWISE NOTED.
- PROTECT ALL EXISTING WORK FROM DAMAGE DURING CONSTRUCTION. ANY DAMAGED MATERIALS, SYSTEMS, COMPONENTS, FINISHES BE LIKE, SHALL BE REPAIRED OR REPLACED AT THE EXPENSE OF THE CONTRACTOR TO THE ACCEPTANCE OF THE OWNER.
- SEAL ALL INTERIOR WALL AND CEILING PENETRATIONS TO MATCH EXISTING FIRE RATING OR NEW FIRE RATING, IF REQUIRED. COORDINATE WITH ARCHITECTURAL DRAWINGS AS REQUIRED.
- ALL TELECOMMUNICATIONS CABLING CATEGORY 6 AND BELOW SHALL BE UPGRADED WITH CAT6A PORTS AND CABLE QUANTITIES INDICATED, UNLESS NOTED OTHERWISE.
- TELECOMMUNICATIONS CABLES SHALL BE ROUTED IN EXISTING PATHWAY VACATED BY EXISTING CABLING. PROVIDE RACEWAYS TO EXTEND TO ASSOCIATED TR.
- A TELECOMMUNICATIONS OUTLET UPGRADE SHALL INCLUDE, BUT IS NOT LIMITED TO REMOVING AND DISPOSING EXISTING DEVICES AND CABLES; PROVIDING ALL LABOR, MATERIALS, TOOLS, TEST INSTRUMENTS, AND CONSUMABLES REQUIRED FOR THE INSTALLATION, TERMINATION, TESTING, LABELING, AND CERTIFICATION OF A FULLY FUNCTIONAL CATEGORY 6A OUTLET WITH THE PORT QUANTITY INDICATED.
- CONTRACTOR SHALL PROVIDE, INSTALL, AND TERMINATE HORIZONTAL CAT6A CABLING FROM EACH WAO (WORK AREA OUTLET) TO ITS RESPECTIVE TR.
- PROVIDE PULL BOXES SIZED PER ANSI/TIA-569 AT 100-FT INTERVALS IN STRAIGHT CONDUIT RUNS, OR CONDUIT CONTAINING BENDS TOTALING MORE THAN 180 DEGREES.
- PROVIDE CONDUITS AND SLEEVES AS REQUIRED FOR ROUTING AND INSTALLATION OF HORIZONTAL AND BACKBONE CABLING. PROVIDE FIRE-STOP MATERIALS TO SEAL IN AND AROUND CONDUIT PER CODE. REFER TO ARCHITECTURAL DRAWINGS FOR PARTITION TYPES AND WALL HEIGHTS.
- OUTLET LOCATIONS ARE APPROXIMATE. DETERMINE EXACT LOCATIONS IN FIELD; DOCUMENT VARIANCES ON AS-BUILT DRAWINGS.
- CONTRACTOR SHALL BE RESPONSIBLE FOR RELOCATING FURNITURE, INCLUDING TRANSPORTATION, FOR ALL WORK TO DESIRED VA STORAGE LOCATION. COORDINATE WITH VA AS REQUIRED.
- ALL DATA CABLING SHALL BE SEGREGATED FROM OTHER SPECIAL SYSTEMS INCLUDING, BUT NOT LIMITED TO, SECURITY, FIRE ALARM, AND NURSE CALL SYSTEMS. WHEN ROUTED THROUGH CONDUIT, DATA CABLING SHALL HAVE ITS OWN RACEWAY. WHEN DATA CABLING IS ROUTED THROUGH A COMMON SPECIAL SYSTEMS CABLE TRAY, CABLING SHALL BE BUNDLED WITH LIKE SYSTEMS; ADDITIONALLY, CABLE TRAYS SHALL BE PROVIDED WITH TRAY DIVIDERS AS REQUIRED TO SEGREGATE SYSTEMS FROM ONE ANOTHER.
- FIBER-OPTIC CABLING ROUTES AND ASSOCIATED RACEWAYS/ CABLE TRAY ARE DIAGRAMMATICAL. COORDINATE EXACT ROUTING WITH EXISTING CONDITIONS, ARCHITECTURAL FEATURES, MECHANICAL DUCTWORK, PIPING, EQUIPMENT, AND ANY OTHER OBSTRUCTIONS PRIOR TO INSTALLATION.

KEY NOTES

- 1 PROVIDE TELECOMMUNICATIONS OUTLET WITH PORT QUANTITY SHOWN TO REPLACE EXISTING TELECOMMUNICATIONS OUTLET; EXISTING OUTLET CONDUIT SHALL REMAIN AND BE UTILIZED TO FEED NEW CABLING; REFERENCE SHEET DETAIL '1' ON SHEET ET503 AND THE GENERAL NOTES ON THIS SHEET FOR ADDITIONAL INFORMATION. COORDINATE WITH VA FOR EXACT OUTLET PLACEMENT.
- 2 REMOVE AND REPLACE EXISTING CABLE TRAY IN THE AREAS SHOWN AS REQUIRED; IF CABLE TRAY IS NON-EXISTENT, PROVIDE CABLE TRAY AS INDICATED. REFERENCE DETAIL '6' ON SHEET ET503 AND TELECOMMUNICATIONS WAO AND CABLE TRAY SCHEDULE ON SHEET ET701. WHERE WALL EXTENDS TO CEILING, CABLE TRAY SHALL STOP AND TRANSITION TO CONDUIT SLEEVES (2) 4" MINIMUM WITH APPROPRIATE FIRE-PROOFING AND CAULKING TO PASS THROUGH WALL. WHERE EXISTING CABLE TRAY AND/OR SLEEVES ARE DISCOVERED, EVALUATE CONDITION AND RACEWAY CAPACITY; IF CABLE TRAY AND/OR SLEEVES APPEAR TO BE REUSABLE, NOTIFY COR FOR POSSIBLE REUSE.

KEY PLAN



--	--	--	--	--	--	--	--	--	--	--	--	--	--	--	--	--	--	--	--	--	--	--	--	--	--	--	--	--	--	--	--	--	--	--	--	--	--	--	--	--	--	--	--	--	--	--	--	--	--	--	--	--	--	--	--	--	--	--	--	--	--	--	--	--	--	--	--	--	--	--	--	--	--	--	--	--	--	--	--	--	--	--	--	--	--	--	--	--	--	--	--	--	--	--	--	--	--	--	--	--	--	--	--	--	--	--	--	--	--	--	--	--	--	--	--	--	--	--	--	--	--	--	--	--	--	--	--	--	--	--	--	--	--	--	--	--	--	--	--	--	--	--	--	--	--	--	--	--	--	--	--	--	--	--	--	--	--	--	--	--	--	--	--	--	--	--	--	--	--	--	--	--	--	--	--	--	--	--	--	--	--	--	--	--	--	--	--	--	--	--	--	--	--	--	--	--	--	--	--	--	--	--	--	--	--	--	--	--	--	--	--	--	--	--	--	--	--	--	--	--	--	--	--	--	--	--	--	--	--	--	--	--	--	--	--	--	--	--	--	--	--	--	--	--	--	--	--	--	--	--	--	--	--	--	--	--	--	--	--	--	--	--	--	--	--	--	--	--	--	--	--	--	--	--	--	--	--	--	--	--	--	--	--	--	--	--	--	--	--	--	--	--	--	--	--	--	--	--	--	--	--	--	--	--	--	--	--	--	--	--	--	--	--	--	--	--	--	--	--	--	--	--	--	--	--	--	--	--	--	--	--	--	--	--	--	--	--	--	--	--	--	--	--	--	--	--	--	--	--	--	--	--	--	--	--	--	--	--	--	--	--	--	--	--	--	--	--	--	--	--	--	--	--	--	--	--	--	--	--	--	--	--	--	--	--	--	--	--	--	--	--	--	--	--	--	--	--	--	--	--	--	--	--	--	--	--	--	--	--	--	--	--	--	--	--	--	--	--	--	--	--	--	--	--	--	--	--	--	--	--	--	--	--	--	--	--	--	--	--	--	--	--	--	--	--	--	--	--	--	--	--	--	--	--	--	--	--	--	--	--	--	--	--	--	--	--	--	--	--	--	--	--	--	--	--	--	--	--	--	--	--	--	--	--	--	--	--	--	--	--	--	--	--	--	--	--	--	--	--	--	--	--	--	--	--	--	--	--	--	--	--	--	--	--	--	--	--	--	--	--	--	--	--	--	--	--	--	--	--	--	--	--	--	--	--	--	--	--	--	--	--	--	--	--	--	--	--	--	--	--	--	--	--	--	--	--	--	--	--	--	--	--	--	--	--	--	--	--	--	--	--	--	--	--	--	--	--	--	--	--	--	--	--	--	--	--	--	--	--	--	--	--	--	--	--	--	--	--	--	--	--	--	--	--	--	--	--	--	--	--	--	--	--	--	--	--	--	--	--	--	--	--	--	--	--	--	--	--	--	--	--	--	--	--	--	--	--	--	--	--	--	--	--	--	--	--	--	--	--	--	--	--	--	--	--	--	--	--	--	--	--	--	--	--	--	--	--	--	--	--	--	--	--	--	--	--	--	--	--	--	--	--	--	--	--	--	--	--	--	--	--	--	--	--	--	--	--	--	--	--	--	--	--	--	--	--	--	--	--	--	--	--	--	--	--	--	--	--	--	--	--	--	--	--	--	--	--	--	--	--	--	--	--	--	--	--	--	--	--	--	--	--	--	--	--	--	--	--	--	--	--	--	--	--	--	--	--	--	--	--	--	--	--	--	--	--	--	--	--	--	--	--	--	--	--	--	--	--	--	--	--	--	--	--	--	--	--	--	--	--	--	--	--	--	--	--	--	--	--	--	--	--	--	--	--	--	--	--	--	--	--	--	--	--	--	--	--	--	--	--	--	--	--	--	--	--	--	--	--	--	--	--	--	--	--	--	--	--	--	--	--	--	--	--	--	--	--	--	--	--	--	--	--	--	--	--	--	--	--	--	--	--	--	--	--	--	--	--	--	--	--	--	--	--	--	--	--	--	--	--	--	--	--	--	--	--	--	--	--	--	--	--	--	--	--	--	--	--	--	--	--	--	--	--	--	--	--	--	--	--	--	--	--	--	--	--	--	--	--	--	--	--	--	--	--	--	--	--	--	--	--	--	--	--	--	--	--	--	--	--	--	--	--	--	--	--	--	--	--	--	--	--	--	--	--	--	--	--	--	--	--	--	--	--	--	--	--	--	--	--	--	--	--	--	--	--	--	--	--	--	--	--	--	--	--	--	--	--	--	--	--	--	--	--	--	--	--	--	--	--	--	--	--	--	--	--	--	--	--	--	--	--	--	--	--	--	--	--	--	--	--	--	--	--	--	--	--	--	--	--	--	--	--	--	--	--	--	--	--	--	--	--	--	--	--	--	--	--	--	--	--	--	--	--	--	--	--	--	--	--	--	--	--	--	--	--	--	--	--	--	--	--	--	--	--	--	--	--	--	--	--	--	--	--	--	--	--	--	--	--	--	--	--	--	--	--	--	--	--	--	--	--	--	--	--	--	--	--	--	--	--	--	--	--	--	--	--	--	--	--	--	--	--	--	--	--	--	--	--	--	--	--	--	--	--	--	--	--	--	--	--	--	--	--	--	--	--	--	--	--	--	--	--	--	--	--	--	--	--	--	--	--	--	--	--	--	--	--	--	--	--	--	--	--	--	--	--	--	--	--	--	--	--	--	--	--	--	--	--	--	--	--	--	--	--	--	--	--	--	--	--	--	--	--	--	--	--	--	--	--	--	--	--	--	--	--	--	--	--	--	--	--	--	--	--	--	--	--	--	--	--	--	--	--	--	--	--	--	--	--	--	--	--	--	--	--	--	--	--	--	--	--	--	--	--	--	--	--	--	--	--	--	--	--	--	--	--	--	--	--	--	--	--	--	--	--	--	--	--	--	--	--	--	--	--	--	--	--	--	--	--	--	--	--	--	--	--	--	--	--	--	--	--	--	--	--	--	--	--	--	--	--	--	--	--	--	--	--	--	--	--	--	--	--	--	--	--	--	--	--	--	--	--	--	--	--	--	--	--	--	--	--	--	--	--	--	--	--	--	--	--	--	--	--	--	--	--	--	--	--	--	--	--	--	--	--	--	--	--	--	--	--	--	--	--	--	--	--	--	--	--	--	--	--	--	--	--	--	--	--	--	--	--	--	--	--