

A

B

C

D

E

F

A

B

C

D

E

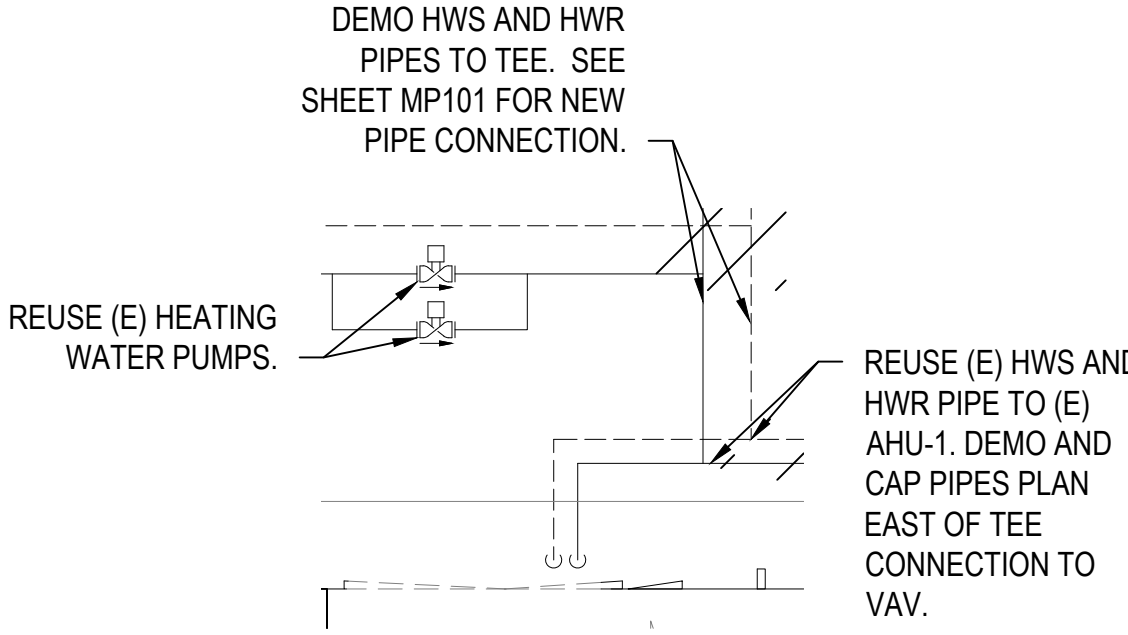
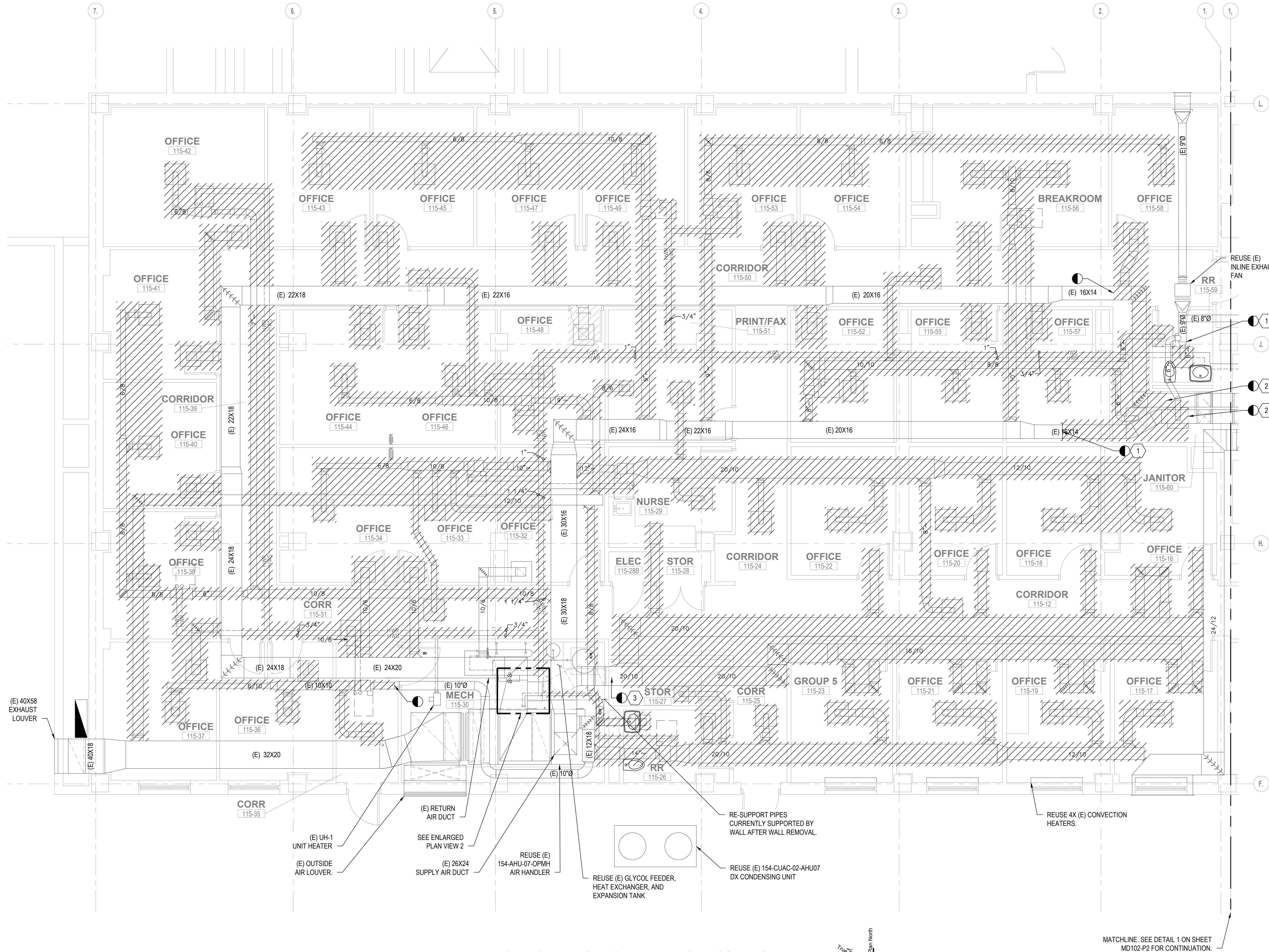
F

NOTES:

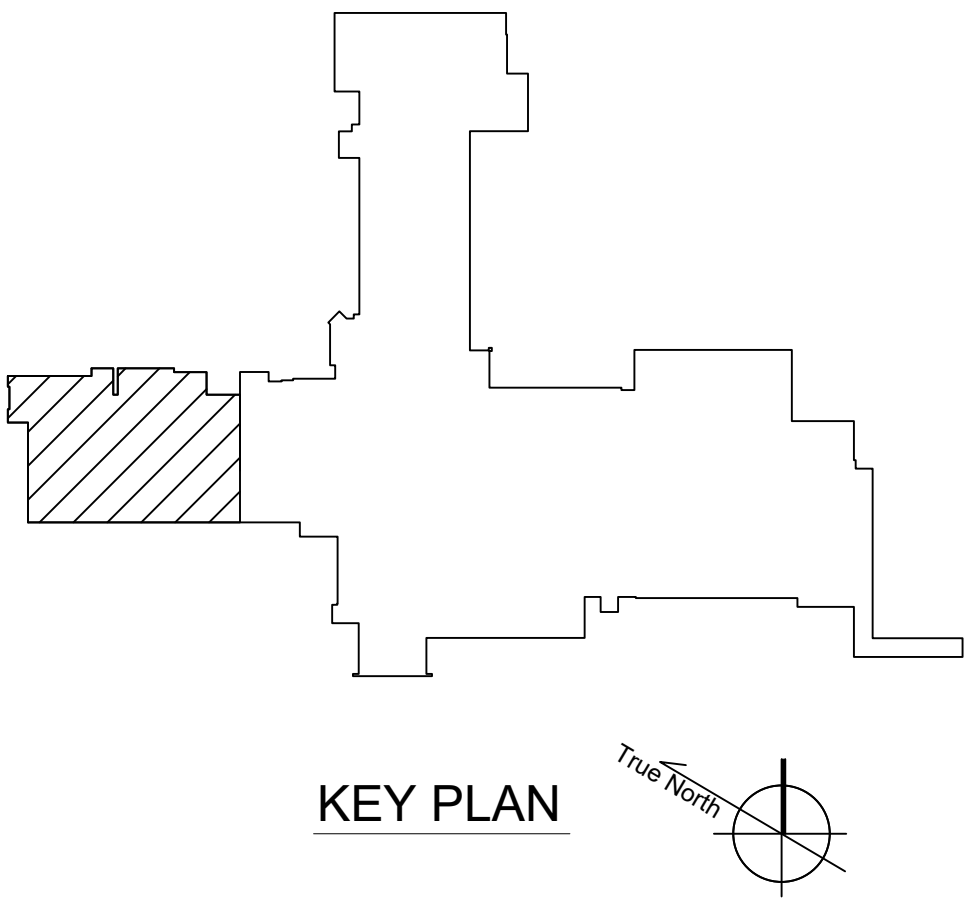
1. HATCHES INDICATE SCOPE OF DEMOLITION WORK.
2. PATCH EXISTING DUCTS TO BE REUSED AT LIMIT OF DEMOLITION.
3. ONLY LIMIT OF DEMO MAIN DUCTS SHOWN. NOT ALL LIMIT OF DEMOLITION IS ANNOTATED FOR DRAWING CLARITY.
4. IF PIPING IS DEMOED TO A TEE FITTING, REPLACE TEE WITH APPROPRIATE FITTING FOR TRANSITION.

KEY NOTES:







- 1 CAP EXISTING DUCT.
- 2 REUSE EXISTING 16X14 SUPPLY AND RETURN AIR DUCTS PLAN EAST OF THIS POINT.
- 3 REUSE EXISTING DUCT PLAN WEST OF THIS POINT.

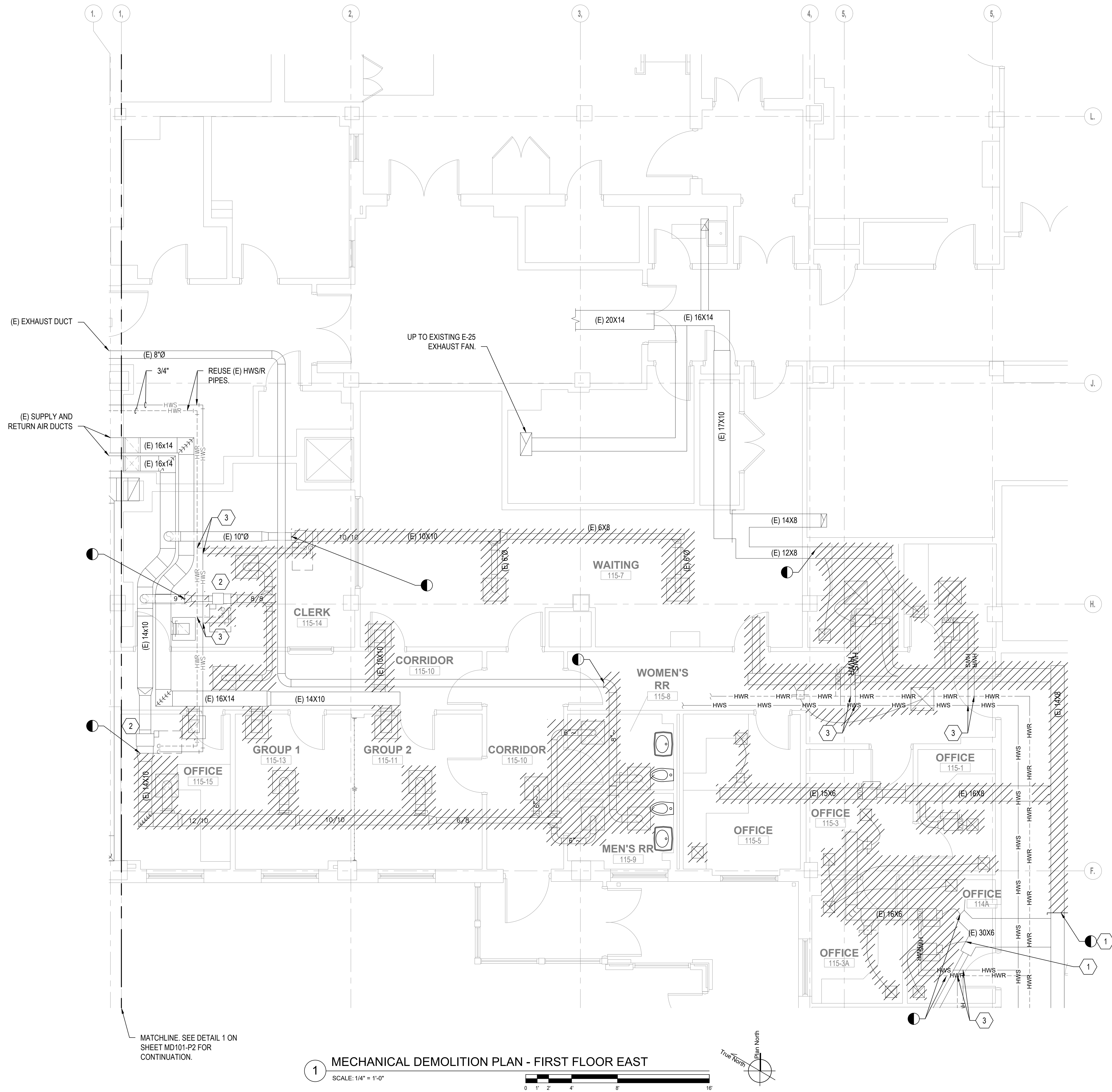


NOTE: DUCTS NOT SHOWN FOR CLARITY.
2 ENLARGED MECH ROOM 115-30
SCALE: 1/4" = 1'-0"



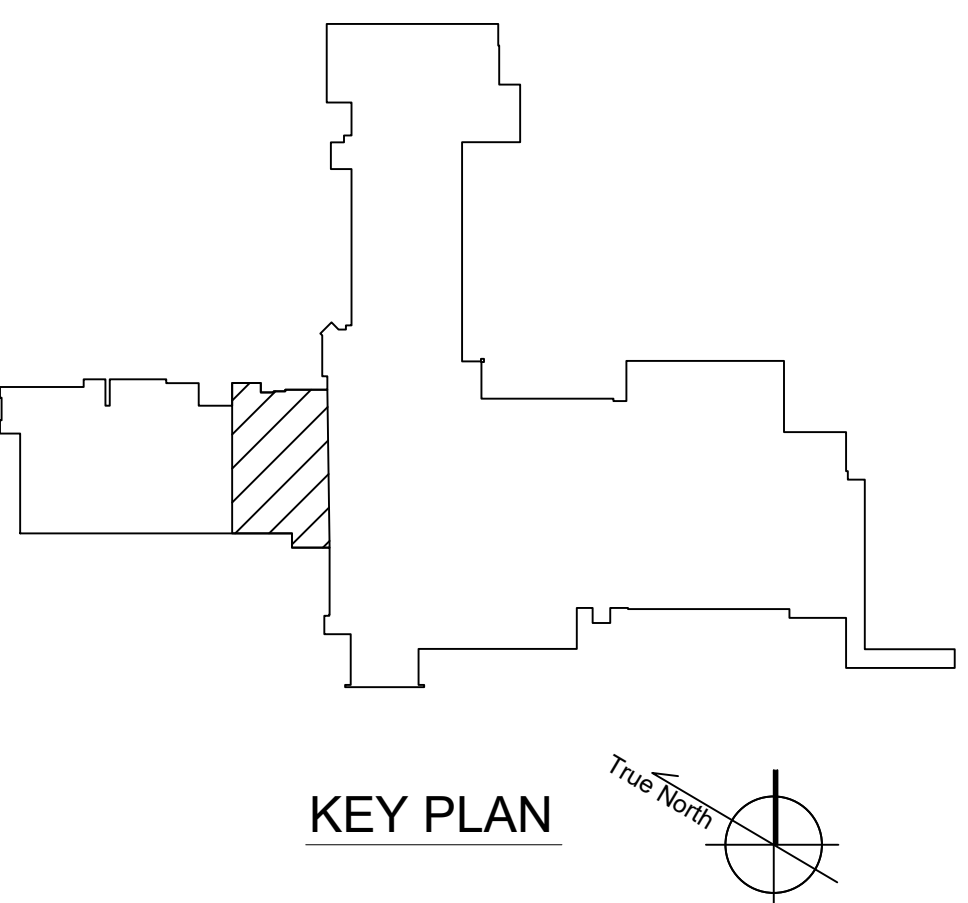
1 MECHANICAL DEMOLITION PLAN - FIRST FLOOR WEST
SCALE: 1/4" = 1'-0"

CONSULTANTS:		ARCHITECT/ENGINEERS:		STAMP:		Drawing Title		Phase		Project Title		Project Number	
 1660 TONAWANDA CREEK PARKWAY SUITE 400, LEANWOOD, KANSAS 66041		 750 W HAMPDEN AVE SUITE #300 ENGLEWOOD CO 80110 (720) 550-6307 WWW.VALHALLAENGINEERING.COM		 VEG 4.11		MECHANICAL DEMOLITION PLAN - FIRST FLOOR WEST		100% CONSTRUCTION DOCUMENTS		OUTPATIENT MENTAL HEALTH / EDUCATION ADDITION		436-114	
 Protection Engineering CORPORATE OFFICE		 JIRSA HEDRICK Structural Engineers		 U.S. Department of Veterans Affairs		Approved: Project Director				Location 3687 VETERANS DRIVE, FORT HARRISON, MT 59636		Building Number 154	
Issued:		Date:								Issue Date 08/05/2020		Checked DD	
										Drawn DN		Drawing Number MD101-P2	










- NOTES:**
- HATCHES INDICATE SCOPE OF DEMOLITION WORK.
 - PATCH EXISTING DUCTS TO BE REUSED AT LIMIT OF DEMOLITION.
 - ONLY LIMIT OF DEMO MAIN DUCTS SHOWN. NOT ALL LIMIT OF DEMOLITION IS ANNOTATED FOR DRAWING CLARITY.
 - IF PIPING IS DEMOED TO A TEE FITTING, REPLACE TEE WITH APPROPRIATE FITTING FOR TRANSITION.

- KEY NOTES:**
- CAP EXISTING DUCT.
 - REUSE (E) VAV.
 - DEMOLISH HWS AND HWR CONNECTIONS BACK TO MAINS. SEE GENERAL NOTE 4.



1 MECHANICAL DEMOLITION PLAN - FIRST FLOOR EAST
SCALE: 1/4" = 1'-0"

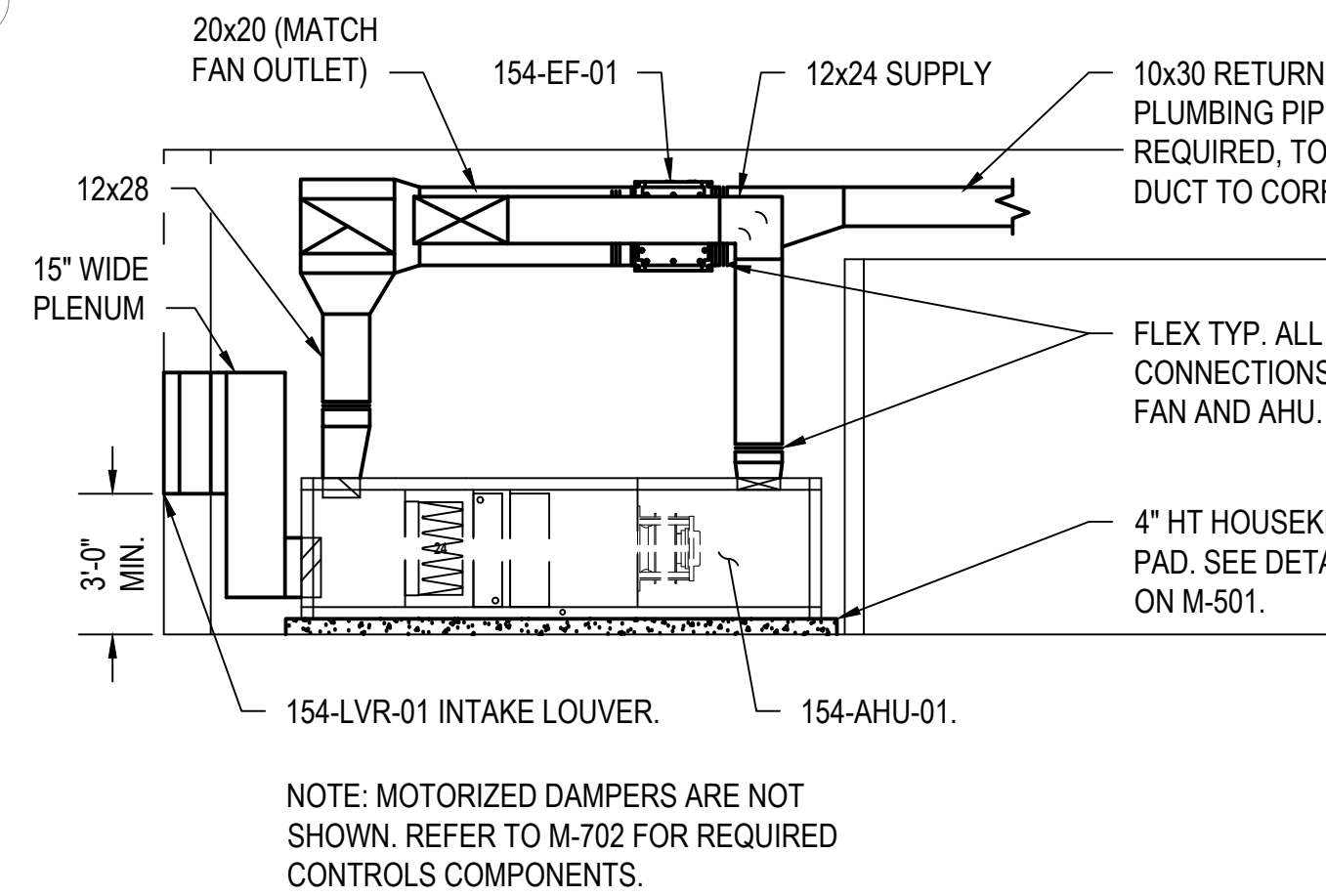
				<div>CONSULTANTS:</div> <div><div><div>HOEFER WYSOCKI</div><div>11440 TONAWANDA CREEK PARKWAY SUITE 400, LEANWOOD, KANSAS 66041</div></div><div></div></div>		<div>ARCHITECT/ENGINEERS:</div> <div><div><div>VALHALLA ENGINEERING GROUP, LLC</div><div>750 W HAMPDEN AVE SUITE #300 ENGLEWOOD CO 80110 (720) 550-6307 WWW.VALHALLAENGINEERING.COM</div></div><div>VEG 4.11</div></div>		<div>STAMP:</div> <div></div>		<div><div>U.S. Department of Veterans Affairs</div></div>		<div>Drawing Title</div> <div>MECHANICAL DEMOLITION PLAN - FIRST FLOOR EAST</div> <div>Approved: Project Director</div>		<div>Phase</div> <div>100% CONSTRUCTION DOCUMENTS</div>		<div>Project Title</div> <div>OUTPATIENT MENTAL HEALTH / EDUCATION ADDITION</div>			<div>Project Number</div> <div>436-114</div> <div>Building Number</div> <div>154</div>	
				<div><div>Protection Engineering</div><div>CONSULTANTS</div></div> <div><div>JIRSA HEDRICK</div><div>Structural Engineers</div></div>						<div>Location</div> <div>3687 VETERANS DRIVE, FORT HARRISON, MT 59636</div>		<div>Drawing Number</div> <div>MD102-P2</div>								
<div>Issued:</div>		<div>Date:</div>								<div>Issue Date</div> <div>08/05/2020</div>		<div>Checked</div> <div>DD</div>		<div>Drawn</div> <div>DN</div>						

NOTES:

1. LIGHT LINE WEIGHT INDICATES EXISTING AND IS NOTED WITH (E). HEAVY LINE WEIGHT INDICATES NEW CONSTRUCTION.
2. NOT ALL DUCT OFFSETS ARE SHOWN TO AVOID OBSTACLES. PROVIDE COORDINATION SHOP DRAWING FOR APPROVAL BEFORE CONSTRUCTION AS REQUIRED BY SPEC SECTION 23 05 11.
3. OUTSIDE AIR AND EXHAUST AIR DAMPERS SHALL COMPLY WITH ASHRAE 90.1-2013 TABLE 6.4.3.4.3 MAXIMUM DAMPER LEAKAGE.
4. MAXIMUM FLEX DUCT LENGTH PER DIFFUSER SHALL BE 5'-0".
5. PROVIDE SPRING ISOLATORS ON ALL DUCTWORK AND PIPING IN MECHANICAL ROOM.
6. VAV INLET DUCT SIZE SHALL MATCH VAV INLET SIZE UNLESS NOTED OTHERWISE.
7. RETURN DIFFUSER DUCT SIZE SHALL MATCH NECK SIZE AS SHOWN ON THE MECHANICAL SCHEDULES UNLESS NOTED OTHERWISE.
8. ALL 90 DEGREE ELBOWS SHALL HAVE SINGLE THICKNESS TURNING VANES. REF: M-502
9. ALL ELBOWS OTHER THAN 90 DEGREES SHALL BE SMOOTH RADIUS. REF: M-502

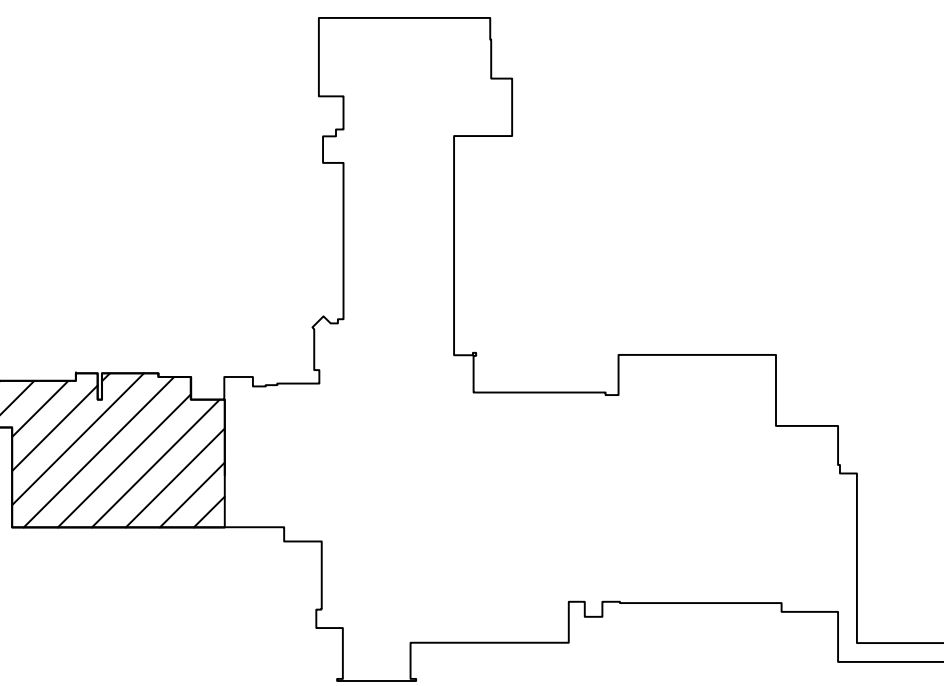
KEY NOTES:

- 1 REUSE EXISTING EXHAUST DUCT.
- 2 REUSE EXISTING SUPPLY AND RETURN DUCT.
- 3 TRANSITION, AS REQUIRED, TO AVOID OBSTRUCTIONS.
- 4 EXISTING AIR HANDLER SHALL BE BALANCED TO NEW FLOWS SHOWN ON THIS DRAWING. OUTSIDE AIR MINIMUM SHALL BE FIXED AT 1550 CFM.
- 5 PROVIDE CONCRETE PAD. MATCH (E) 154-CUAC-AHU01 PAD HEIGHT. PAD SHALL OVERLAP CONDENSING UNIT BASE 5" MIN.



154-AHU-01-EDU AIR HANDLER SECTION

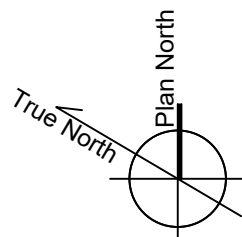
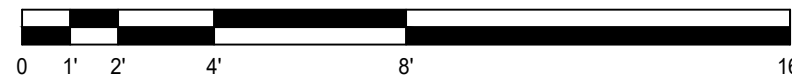
SCALE: 1/4" = 1'-0"



KEY PLAN

MECHANICAL HVAC PLAN - FIRST FLOOR WEST

SCALE: 1/4" = 1'-0"



CONSULTANTS:



ARCHITECT/ENGINEERS:



750 W HAMPDEN AVE
SUITE #300
ENGLEWOOD CO 80110
(720) 550-6307
WWW.VALHALLAENGINEERING.COM

VEG.4.11

STAMP:



Drawing Title
MECHANICAL HVAC PLAN - FIRST FLOOR WEST

Approved: Project Director

Phase
100% CONSTRUCTION DOCUMENTS

Project Title
OUTPATIENT MENTAL HEALTH / EDUCATION ADDITION

Location
3687 VETERANS DRIVE, FORT HARRISON, MT 59636

Issue Date
08/05/2020

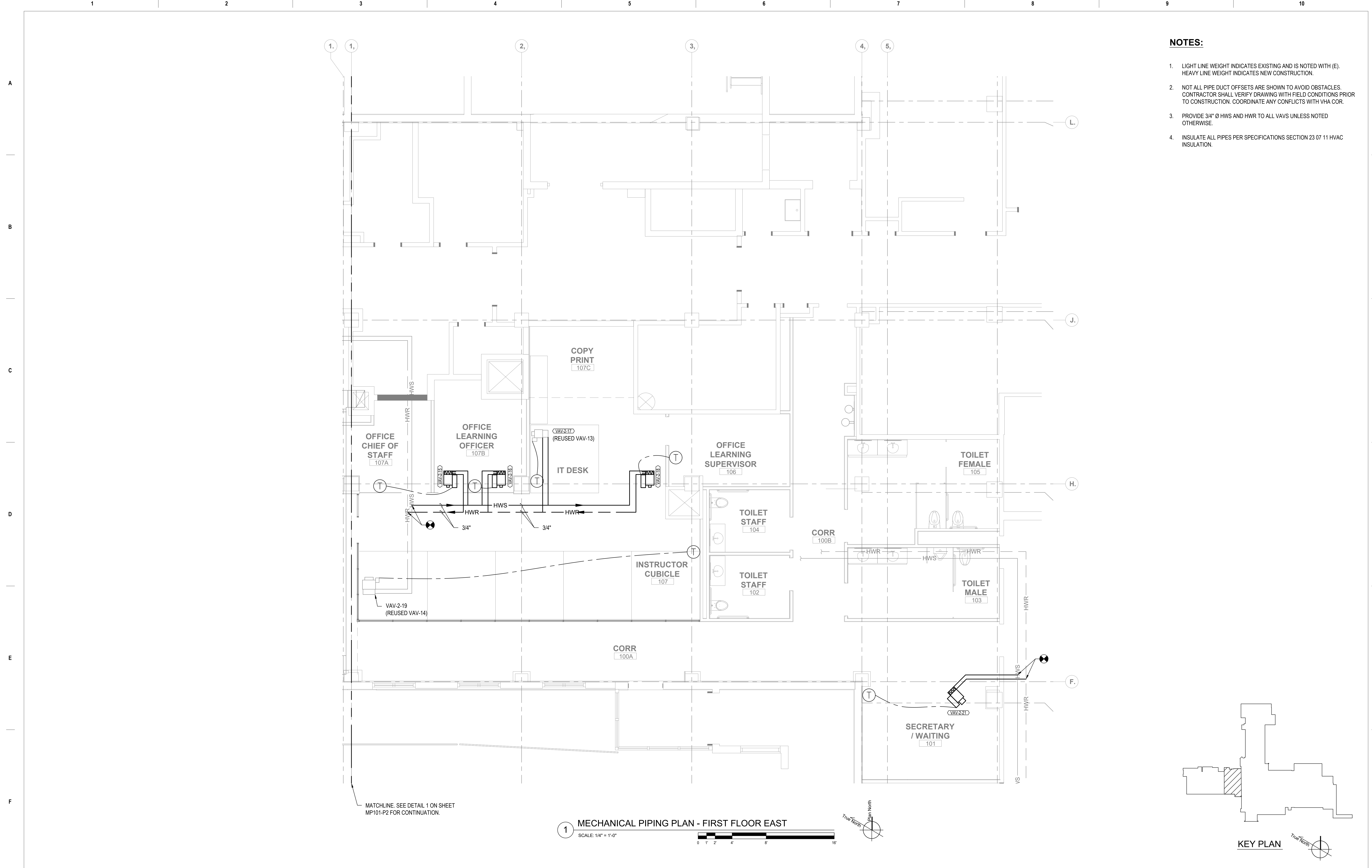
Checked
DD

Drawn
DN

Project Number
436-114

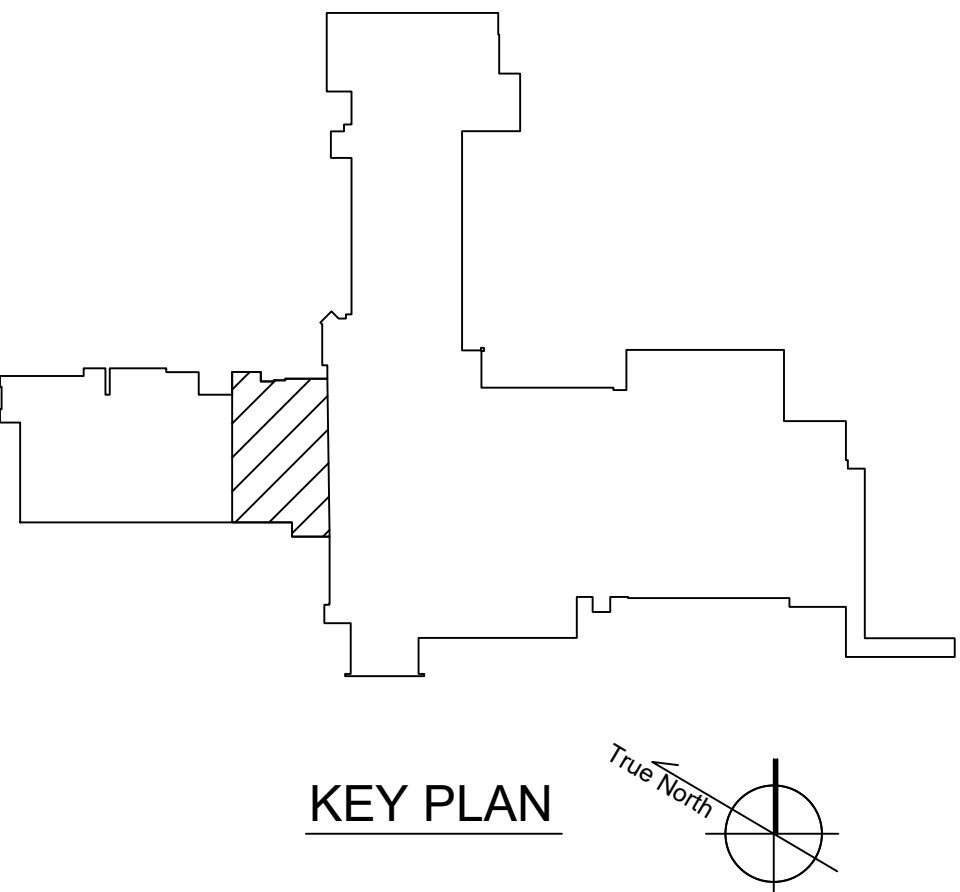
Building Number
154

Drawing Number
MH101-P2



- NOTES:**
1. LIGHT LINE WEIGHT INDICATES EXISTING AND IS NOTED WITH (E).
HEAVY LINE WEIGHT INDICATES NEW CONSTRUCTION.
 2. NOT ALL PIPE DUCT OFFSETS ARE SHOWN TO AVOID OBSTACLES.
CONTRACTOR SHALL VERIFY DRAWING WITH FIELD CONDITIONS PRIOR
TO CONSTRUCTION. COORDINATE ANY CONFLICTS WITH VHA COR.
 3. PROVIDE 3/4" Ø HWS AND HWR TO ALL VAVS UNLESS NOTED
OTHERWISE.
 4. INSULATE ALL PIPES PER SPECIFICATIONS SECTION 23 07 11 HVAC
INSULATION.

1 MECHANICAL PIPING PLAN - FIRST FLOOR EAST
SCALE: 1/4" = 1'-0"



<div>Issued:</div>	<div>Date:</div>	CONSULTANTS:		ARCHITECT/ENGINEERS:		STAMP:	<div>Drawing Title</div> <div>MECHANICAL PIPING PLAN - FIRST FLOOR EAST</div> <div>Approved: Project Director</div>	<div>Phase</div> <div>100% CONSTRUCTION DOCUMENTS</div>	<div>Project Title</div> <div>OUTPATIENT MENTAL HEALTH / EDUCATION ADDITION</div> <div>Location 3687 VETERANS DRIVE, FORT HARRISON, MT 59636</div> <div><div>Issue Date</div><div>08/05/2020</div><div><div>Checked</div><div>DD</div><div>Drawn</div><div>DN</div></div></div>	<div>Project Number</div> <div>436-114</div> <div><div>Building Number</div><div>154</div><div><div>Drawing Number</div><div>MP102-P2</div></div></div>				
		<div></div> <div>HOEFER WYSOCKI 1840 TONAHAWK CREEK PARKWAY SUITE 400, LEANWOOD, KANSAS 66041</div>	<div></div> <div>VALHALLA ENGINEERING GROUP, LLC 750 W HAMPDEN AVE SUITE #300, ENGLEWOOD CO 80110 (720) 550-6307 WWW.VALHALLAENGINEERING.COM</div>	<div></div> <div>U.S. Department of Veterans Affairs</div>										
		<div></div> <div>Protection Engineering 11660 TONAHAWK CREEK PARKWAY SUITE 400, LEANWOOD, KANSAS 66041</div>		<div></div> <div>JIRSA HEDRICK Structural Engineers</div>		VEG 4.11								