

## BL-1301

Ultra Small Digital Barcode Reader, Standard Type, Front Raster



## SPECIFICATIONS

Model			BL-1301
Type			Standard type
Type	Reading direction		Front
	Scanning method		Raster
Laser	Light source		Visible semiconductor laser (wavelength: 660 nm)
	Control output		85 μW
	Pulse duration		112 μs
	Laser class		Class 2 Laser Product (IEC60825-1, FDA (CDRH) Part1040.10 <sup>11</sup> )
Reading	Supported codes		CODE39, ITF, Industrial2of5, Standard2of5, COOP2of5, CODABAR, CODE128, GS1-128, CODE93, UPC/EAN, GS1 DataBar
	Number of readable digits		74 digits (148 digits for CODE128 with start character C)
	Readable bar width		0.125 mm0.005"
	Reading distance		65 to 500 mm 2.56" to 19.69" <sup>*2</sup> (narrow bar width 1.0 mm 0.04")
	Focal point		120 mm 4.72"
	Largest readable label width		339 mm 13.35" <sup>*2</sup> (distance: 350 mm 13.78", narrow bar width: 1.0 mm 0.04")
	PCS		0.4 or more
	Scanning rate		500 to 1,300 scans/sec. (in units of 100 scans)
I/O specifications	Input terminals	Number of inputs	2 (IN1 and IN2)
		Input format	No-voltage input
	Output terminals	Number of outputs	4 (OUT1, OUT2, OUT3, and OUT4)
		Output	NPN open collector
		Rated load	24 VDC, 30 mA
		Leakage current (at OFF)	0.1 mA or less
		Residual voltage (at ON)	0.5 V or less
	Serial interface	Communication method	Conforms to EIA RS-232C
		Communication speed	600, 1,200, 2,400, 4,800, 9,600, 19,200, 31,250, 38,400, 57,600, 115,200 bps
		Synchronization between the transmitter and receiver	Asynchronous
		Data bit length	7 or 8 bits
		Stop bit length	1 bit or 2 bits
		Parity check	None, odd, even
	Rating	Power voltage	
Voltage consumption		400 mA or less	
Environmental resistance	Enclosure rating		IP65
	Ambient light		Sunlight: 10,000 lux, Incandescent lamp: 6,000 lux
	Operating environment		No dust or corrosive gases present
	Ambient temperature		0 to +45 °C 32 to 113 °F
	Storage temperature		-20 to +60 °C -4 to 140 °F
	Relative humidity		35 to 85 % RH (No condensation)
	Vibration resistance		10 to 55 Hz, Double amplitude 1.5 mm 0.06", 2 hours in each of the X, Y, and Z directions
Weight			Approx. 115 g

\*1 The laser classification for FDA (CDRH) is implemented based on IEC60825-1 in accordance with the requirements of Laser Notice No.50.

\*2 Specifications for 500-scan/second operation

Use the Limited Power Source defined in UL/IEC60950-1 to comply with UL/IEC60950-1.

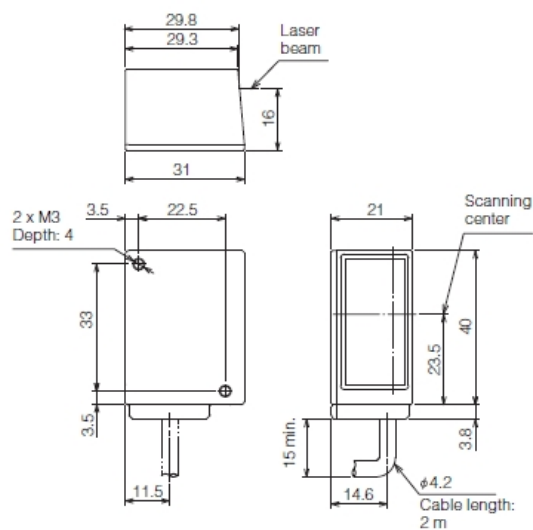
Internal body settings are written in the internal memory area (can be rewritten 100,000 times).

## Dimensions

\* Download CAD file or product manual for larger image/text and more detail.

### BL-1300\_dimension\_01.gif

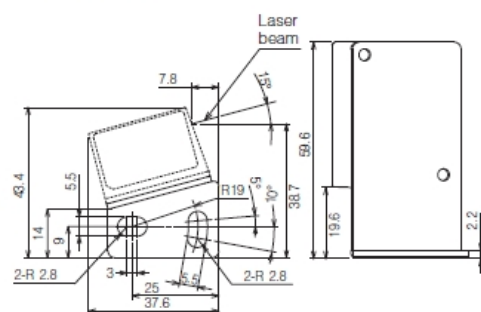
#### ● Main unit (BL-1300/1301/1300HA/1301HA/1370/1371)



### BL-1300\_frontscanning\_dimension\_01.gif

#### Front scanning type

Mounting bracket A



Mounting bracket B

(Unit: mm)

