

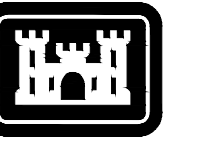
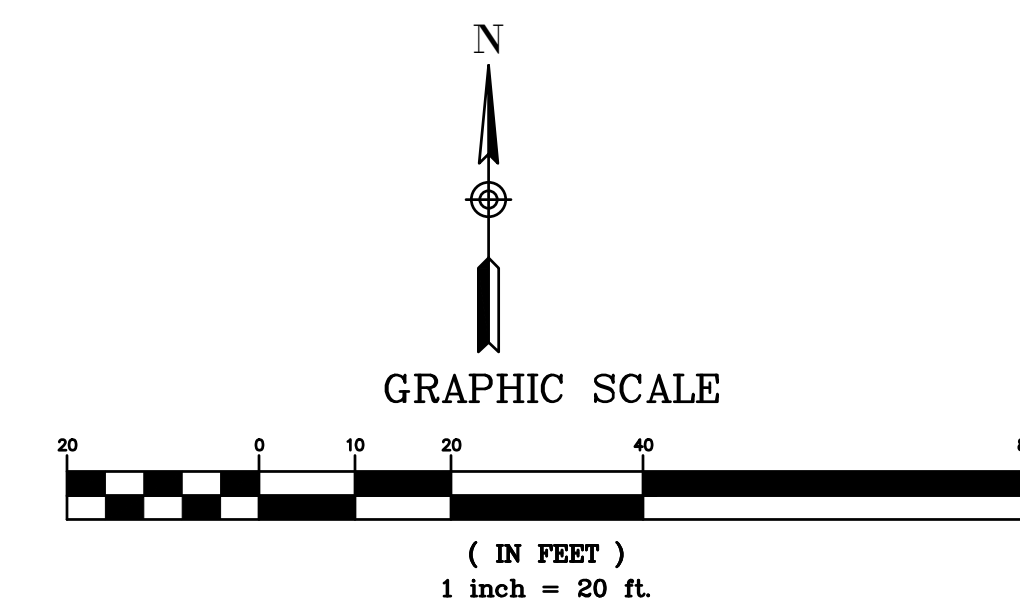
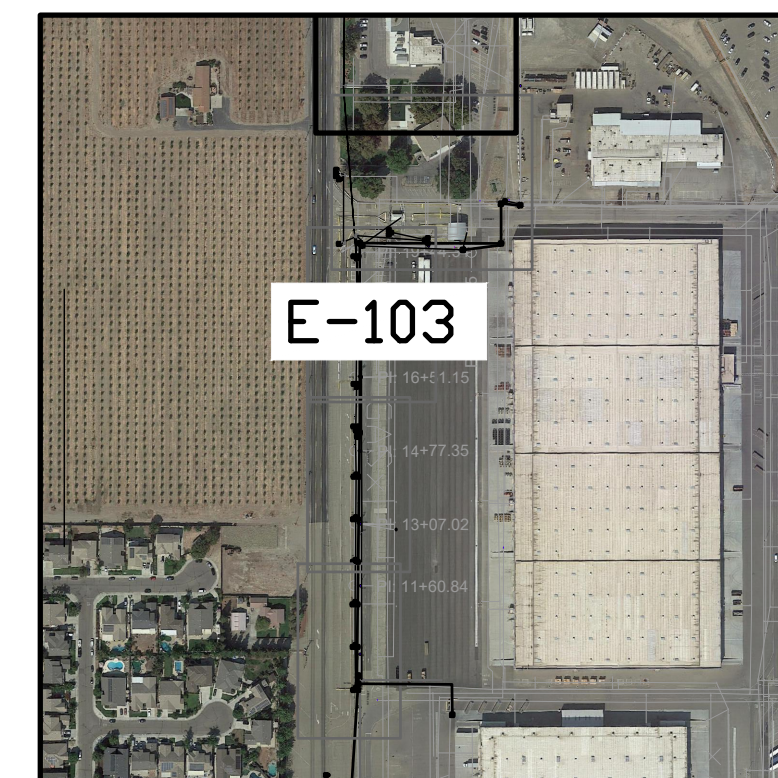
TRACY OH BURIAL ELECTRICAL SHEETS UPDATED ROUTE For Reliability.dwg

GENERAL NOTES:

1. THE PRIMARY PHASE CONDUCTORS SHALL BE SINGLE CONDUCTOR COPPER, 15KV, 133 PERCENT INSULATION, TYPE MV105, WITH A SEMI CONDUCTING SCREEN, EPR INSULATION, AND COPPER TAPE SHIELDING.
2. FIELD VERIFY EXISTING CONDITIONS.
3. POLE NUMBERS AND POLES SHALL NO LONGER EXIST AFTER DEMOLITION. POLE NUMBERS AND POLE LOCATIONS ARE FOR REFERENCE ONLY.
4. REFER TO SHEET E-001 FOR LEGEND AND ABBREVIATIONS.
5. CHECK PHASE ROTATION BEFORE AND AFTER SWITCHING OH 12KV TO UNDERGROUND CABLE.

KEY NOTES:

1. PROVIDE (3) # 4/0 15KV EPR, COPPER CABLE FOR PRIMARY POWER IN TWO CONDUITS. PROVIDE DUCTBANK PER DETAIL 6 SHEET E-503.
2. PROVIDE NEW LIGHT POLES AND LUMINARIES PER DETAILS 4 AND 5 ON SHEET E-501. MOUNT NEW LUMINARIES ON LIGHT POLES AT 24 FEET HEIGHT. PROVIDE HANDHOLE PER DETAIL 3 ON SHEET E-502.
3. PROVIDE ELECTRICAL MANHOLE PER DETAIL 1 SHEET E-502.
4. PROVIDE 200 PAIR COPPER TO BUILDING 100 USING EXISTING CONDUIT.
5. PROVIDE SECONDARY FEEDERS FROM NEW TRANSFORMER TO EXISTING GATEHOUSE PANELBOARD. PROVIDE (3) #4/0 AND (1) #4 G. PROVIDE DUCTBANK PER DETAIL 4 SHEET E-502. REFER TO SHEET E-104 FOR LOCATION OF NEW PADMOUNTED TRANSFORMER.
6. PROVIDE (2) # 4 AND (1) #12 G , COPPER CABLE FOR LIGHTING. PROVIDE LIGHTING DUCTBANK PER DETAIL 4 ON SHEET E-503.
7. PROVIDE DUAL LUMINARE TYPE POLES FROM HH-1 TO HH-14.
8. PROVIDE (2) # 4 AND (1) #12 G , COPPER CABLE FOR 40A PANELBOARD, LIGHTING AND DLA SIGN AT 120/208 V IN EXISTING CONDUIT.
9. PROVIDE (2) # 4 AND (1) #12 G , COPPER CABLE FOR 40A PANELBOARD, LIGHTING AND DLA SIGN AT 120/208 V. PROVIDE LIGHTING DUCTBANK PER DETAIL 4 ON SHEET E-503.

[illegible]

ISSUE DATE:	FEbruary 2022
SOLICITATION NO.:	W91328-XX-X-XXXX
CONTRACT NO.:	W91328-XX-X-XXXX
SPEC NO.:	2410
DESIGN FILE NO.:	130-25-0933

ARMY CORPS OF ENGINEERS
SACRAMENTO DISTRICT
1325 J STREET
SACRAMENTO, CA 95814

IN-HOUSE DESIGN
1325 J STREET
SACRAMENTO, CA 95814

DDJC TRACY, CA
12KV OVERHEAD TO UNDERGROUND POWER LINE REPLACEMENT
PN# 490571

SITE PLAN

STATION 16+00 TO 21+00

BASE BID

SHEET ID
E-103

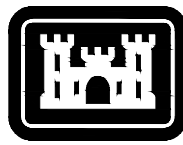
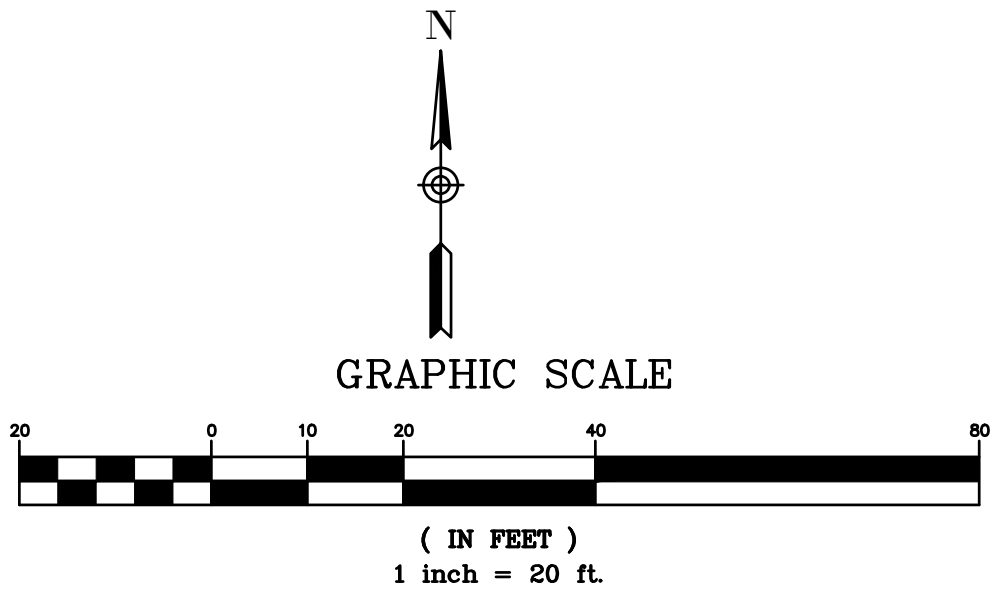


GENERAL NOTES:

1. THE PRIMARY PHASE CONDUCTORS SHALL BE SINGLE CONDUCTOR COPPER, 15KV, 133 PERCENT INSULATION, TYPE MV105, WITH A SEMI CONDUCTING SCREEN, EPR INSULATION, AND COPPER TAPE SHIELDING.
2. FIELD VERIFY EXISTING CONDITIONS.
3. POLE NUMBERS AND POLES SHALL NO LONGER EXIST AFTER DEMOLITION. POLE NUMBERS AND POLE LOCATIONS ARE FOR REFERENCE ONLY.
4. REFER TO SHEET E-001 FOR LEGEND AND ABBREVIATIONS.
5. CHECK PHASE ROTATION BEFORE AND AFTER SWITCHING OH 12KV TO UNDERGROUND CABLE.
6. CLIN OPTION 4: THIS OPTION SHALL INCLUDE THE WORK FROM POLE W/36 TO POLE W/41. IF ONLY CLIN 4 OPTION IS SELECTED PROVIDE A RISER ON POLE W/36 AND W/41 AND CABLES AND DUCTBANK PER KEY NOTE 1 FROM POLE W/36 TO POLE W/41.

KEY NOTES:

1. PROVIDE (3) # 4/0 15KV EPR, COPPER CABLE FOR PRIMARY POWER. PROVIDE DUCTBANK PER DETAIL 4 SHEET E-502.
2. PROVIDE NEW LIGHT POLES AND LUMINARIES PER DETAILS 4 AND 5 ON SHEET E-501. MOUNT NEW LUMINARIES ON LIGHT POLES AT 24 FEET HEIGHT. PROVIDE HANDHOLE PER DETAIL 3 ON SHEET E-502.
3. PROVIDE 4-WAY 15KV PAD-MOUNTED SWITCH PER DETAIL 2 ON SHEET E-503. FUSE RATING TO BE COORDINATED WITH DOWNSTREAM LOAD. PROVIDE ENGRAVED LABELS TO DISPLAY INFORMATION INCLUDING SWITCH #, POWER SOURCE FROM AND TO, FEEDING POWER TO BUILDING #. CONTACT PROJECT ENGINEER FOR MORE INFORMATION.
4. PROVIDE (3) # 4/0 15KV EPR, COPPER CABLE FOR PRIMARY POWER, CONNECT NEW FEEDERS TO EXISTING TRANSFORMER AND USE EXISTING CONDUIT FEED. PROVIDE NEW CONDUIT FROM MANHOLE TO INTERCEPT EXISTING CONDUIT.
5. PROVIDE (2) # 4 AND (1) #12 G , COPPER CABLE FOR LIGHTING. PROVIDE LIGHTING DUCTBANK PER DETAIL 4 ON SHEET E-503.
6. PROVIDE ELECTRICAL MANHOLE PER DETAIL 1 SHEET E-502.
7. PROVIDE SECONDARY FEEDERS FROM NEW TRANSFORMERS TO EXISTING BUILDING PANEL. PROVIDE (6) #350 KCMIL AND (1) #1 G IN (2) 5" SURFACE MOUNTED RGS CONDUIT OUTSIDE THE BUILDING. PROVIDE A THIRD RGS CONDUIT WITH PULL ROPE AS A SPARE. INTERCEPT THE CONDUIT FEEDING THE BUILDING PANEL.
8. PROVIDE (3) # 4/0 15KV EPR, COPPER CABLE FOR PRIMARY POWER IN (3) CONDUITS. PROVIDE DUCTBANK PER DETAIL 5 SHEET E-503.



US Army Corps
of Engineers®

DATE	DESCRIPTION	MARK

DESIGNED BY: R. LEON	ISSUE DATE: FEBRUARY 2022
DRAWN BY: J. CARULLI	SOLICITATION NO.: CONTRACT NO.
CHECKED BY: D. CARULLI	CONTRACT NO.: W91328-XX-X-XXXX
SUBMITTED BY: A. PASQUA, PE	SPEC NO.: 2410
SIZE: ANSI D	DESIGN FILE NO.: 130-25-0933

U.S. ARMY CORPS OF ENGINEERS
SACRAMENTO DISTRICT
1325 J STREET
SACRAMENTO, CA 95814

IN-HOUSE DESIGN
1325 J STREET
SACRAMENTO, CA 95814

DDJC TRACY, CA
12KV OVERHEAD TO UNDERGROUND POWER LINE REPLACEMENT
PN# 490571

SITE PLAN
STATION 40+00 TO 36+00
OPTION BID

SHEET ID

E-107