



PLAN VIEW  
SCALE: 1"=30'

ARMY LANE - ROAD PROFILE  
HORIZONTAL SCALE: 1"=30'  
VERTICAL SCALE: 1"=3'

UTILITIES SHOWN ARE APPROXIMATE  
CONTRACTOR SHALL CONFIRM  
LOCATION AND DEPTH IN FIELD

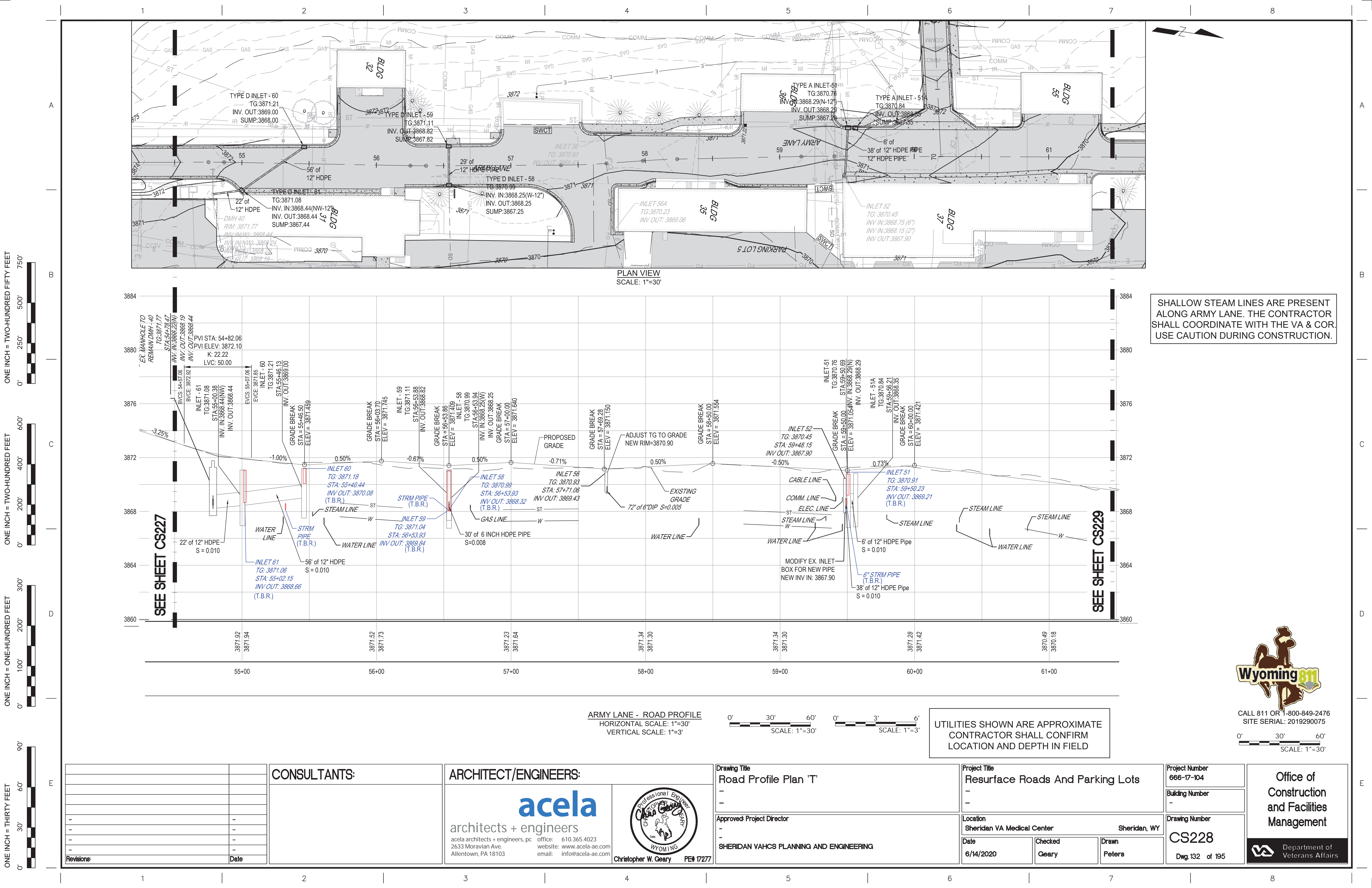
|            |      |   |   |   |                                  |                 |   |        |
|------------|------|---|---|---|----------------------------------|-----------------|---|--------|
|            |      | CONSULTANTS:  | ARCHITECT/ENGINEERS:  | Drawing Title                           | Project Title                    | Project Number  | Office of<br>Construction<br>and Facilities<br>Management   |        |
|            |      |   |   | Road Profile Plan 'S'                   | Resurface Roads And Parking Lots | 666-17-104      |   |        |
|            |      |   |   | -                                       | -                                | Building Number |   |        |
|            |      |   |   | -                                       | -                                | -               |   |        |
|            |      |   |   | -                                       | -                                | Drawing Number  |   |        |
| -          | -    | <div>acela<br/>architects + engineers</div> <div>acela architects + engineers, pc    office: 610.365.4023<br/>2633 Moravian Ave.    website: www.acela-ae.com<br/>Allentown, PA 18103    email: info@acela-ae.com</div> | <div></div> <div>Christopher W. Geary    PE# 17277</div> | Approved: Project Director              | Location                         | Sheridan, WY    | CS227   |        |
| -          | -    |   |   | Sheridan VA Medical Center              | Date                             | Checked         |   | Drawn  |
| -          | -    |   |   | SHERIDAN VAHCS PLANNING AND ENGINEERING | 6/14/2020                        | Geary           |   | Peters |
| -          | -    |   |   |   |                                  |                 |   |        |
| -          | -    |   |   |   |                                  |                 |   |        |
| Revisions: | Date |   |   |   |                                  | Dwg. 131 of 195 |  Department of<br>Veterans Affairs |        |



CALL 811 OR 1-800-849-2476  
SITE SERIAL: 2019290075

0' 30' 60'  
SCALE: 1"=30'















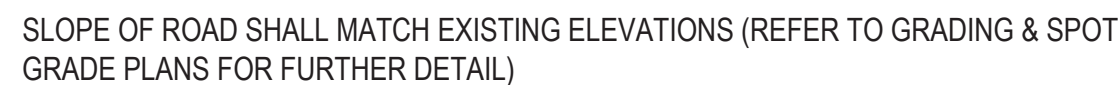




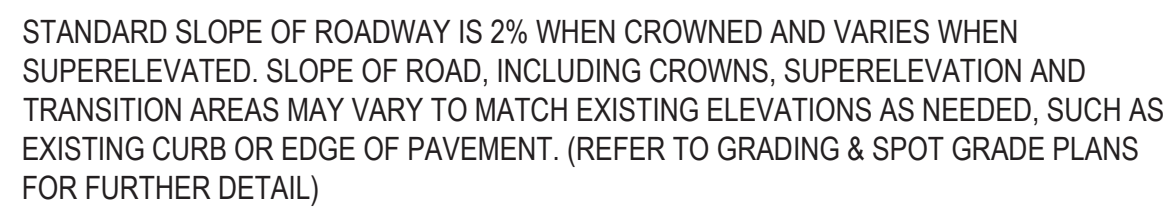




- 8" CLASS A CONCRETE
- 6" CRUSHED AGGREGATE BASE COURSE



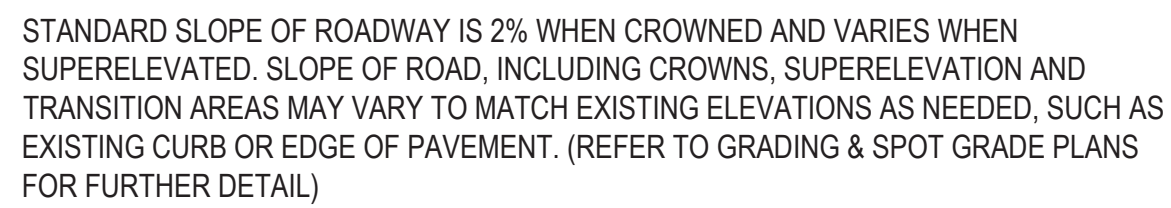
- 4" HOT MIX ASPHALT
- 6" CRUSHED AGGREGATE BASE COURSE



|    |                |  |
|----|----------------|--|
| 1. | CROWN          | (STA 181+05 TO 186+25)<br>(STA 197+78 TO 200+46)   |
| 2. | SUPERELEVATION | (STA 186+76 TO 197+25)   |
| 3. | TRANSITION     | (STA 186+25 TO 186+76)<br>(STA 197+25 TO 197+78)<br>(STA 180+00 TO 181+05)<br>(STA 200+46 TO 200+85) |

1. MEDIUM DUTY ASPHALT PAVEMENT (STA 180+00 TO 200+85)
2. LANE WIDTH VARIES TO MATCH EXISTING FEATURES
3. REFER TO PLANS FOR LOCATION OF PROPOSED CURB

- 5" HOT MIX ASPHALT
- 8" CRUSHED AGGREGATE BASE COURSE



|    |                |  |
|----|----------------|--|
| 1. | CROWN          | (STA 70+20 TO 74+09)<br>(STA 80+40 TO 81+32)<br>(STA 87+07 TO 88+10)   |
| 2. | SUPERELEVATION | (STA 83+17 TO 86+91)   |
| 3. | TRANSITION     | (STA 70+00 TO 70+20)<br>(STA 80+00 TO 80+40)<br>(STA 81+32 TO 83+17)<br>(STA 86+91 TO 87+07)<br>(STA 88+10 TO 89+02) |

1. HEAVY DUTY ASPHALT PAVEMENT (STA 70+00 TO 74+09)  
(STA 80+00 TO 89+02)
2. LANE WIDTH MAY VARY TO MATCH EXISTING FEATURES
3. REFER TO PLANS FOR LOCATION OF PROPOSED CURB

[illegible]

**acela**  
architects + engineers

acela architects + engineers, pc  
2633 Moravian Ave.  
Allentown, PA 18103

office: 610.365.4023  
website: [www.acela-ae.com](http://www.acela-ae.com)  
email: [info@acela-ae.com](mailto:info@acela-ae.com)



Approved: Project Director  
-  
-  
SHERIDAN VAHCS PLANNING AND ENGINEERING

|                            |         |              |
|----------------------------|---------|--------------|
| Location                   |         |              |
| Sheridan VA Medical Center |         | Sheridan, WY |
| Date                       | Checked | Drawn        |
| 6/14/2020                  | Geary   | Peters       |

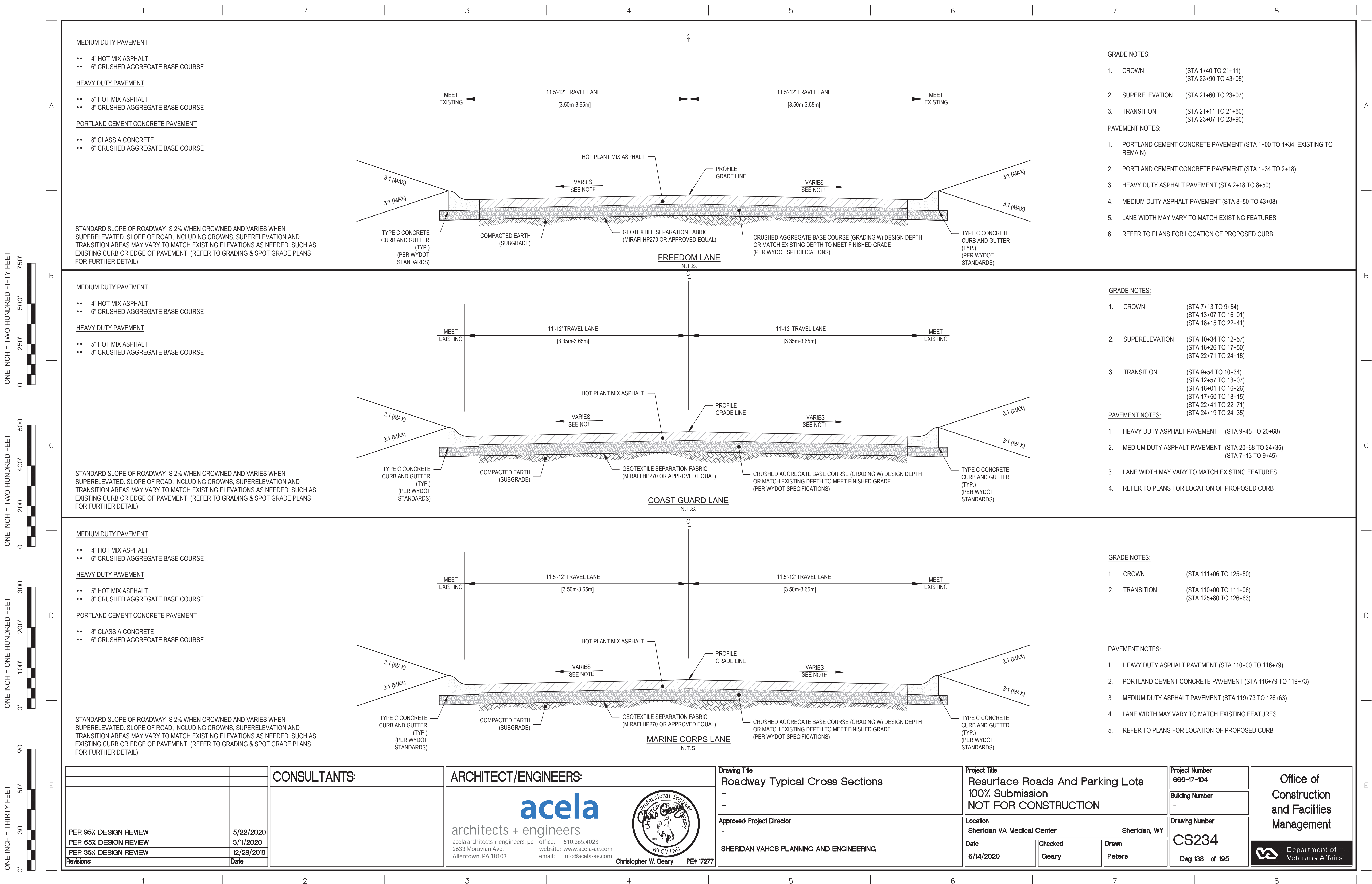
CS233

Dwg.137 of 195



Department of  
Veterans Affairs

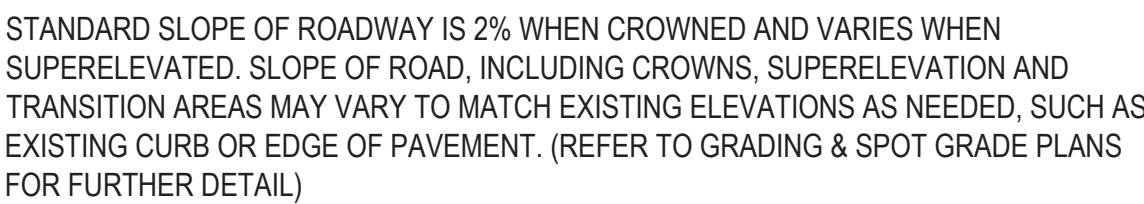






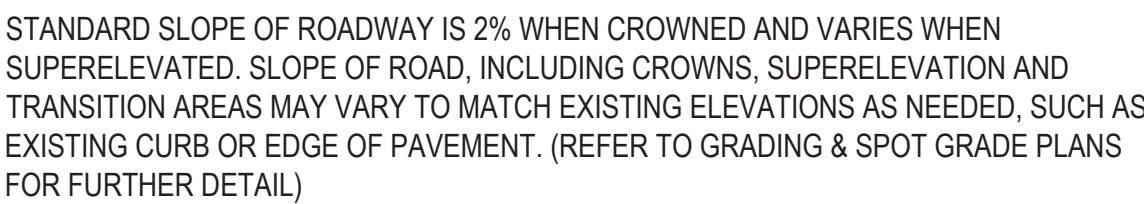
- 5" HOT MIX ASPHALT
- 8" CRUSHED AGGREGATE BASE COURSE

- 8" CLASS A CONCRETE
- 6" CRUSHED AGGREGATE BASE COURSE



- 4" HOT MIX ASPHALT
- 6" CRUSHED AGGREGATE BASE COURSE

- 5" HOT MIX ASPHALT
- 8" CRUSHED AGGREGATE BASE COURSE



|                       |            |
|-----------------------|------------|
|                       |            |
|                       |            |
|                       |            |
| -                     | -          |
| PER 95% DESIGN REVIEW | 5/22/2020  |
| PER 65% DESIGN REVIEW | 3/11/2020  |
| PER 35% DESIGN REVIEW | 12/28/2019 |
| Revisions:            | Date       |

The first two steps are relatively straightforward. The third step involves identifying the specific components of the system that are most likely to cause problems. This can be done by reviewing the system's design specifications, user manuals, and other relevant documentation. Once the potential causes have been identified, the next step is to develop a plan of action to address them.

**acela**  
architects + engineers

acela architects + engineers, pc    office: 610.365.4023  
2633 Moravian Ave.    website: [www.acela-ae.com](http://www.acela-ae.com)  
Allentown, PA 18103    email: [info@acela-ae.com](mailto:info@acela-ae.com)



Approved: Project Director  
-  
-  
SHERIDAN VAHCS PLANNING AND ENGINEERING

|                            |              |
|----------------------------|--------------|
| Location                   |              |
| Sheridan VA Medical Center | Sheridan, WY |

Drawn  
Peters

Drawing Number  
000005CS235  
Dwg.139 of 195 Department of  
Veterans Affairs

|    |                |  |
|----|----------------|--|
| 1. | CROWN          | (STA 50+69 TO 59+85)<br>(STA 61+48 TO 65+91)   |
| 2. | SUPERELEVATION | (STA 60+00 TO 61+37)<br>(STA 66+00 TO 67+36)   |
| 3. | TRANSITION     | (STA 59+85 TO 60+00)<br>(STA 61+37 TO 61+48)<br>(STA 65+91 TO 66+00)<br>(STA 67+36 TO 67+75) |

1. PORTLAND CEMENT CONCRETE PAVEMENT (STA 50+69 TO 51+29)
2. HEAVY DUTY ASPHALT PAVEMENT (STA 51+29 TO 67+75)
3. PORTLAND CEMENT CONCRETE PAVEMENT (STA 50+00 TO 50+69, EXISTING TO REMAIN)
4. LANE WIDTH MAY VARY TO MATCH EXISTING FEATURES
5. REFER TO PLANS FOR LOCATION OF PROPOSED CURB

|    |                |  |
|----|----------------|--|
| 1. | CROWN          | (STA 100+00 TO 106+00)<br>(STA 90+17 TO 95+80)<br>(STA 0+00 TO 0+14) |
| 2. | TRANSITION     | (STA 106+00 TO 106+40)<br>(STA 2+14 TO 2+28)                         |
| 3. | SUPERELEVATION | (STA 0+14 TO 2+14)   |

1. MEDIUM DUTY PAVEMENT (STA 100+40 TO 106+00)
2. HEAVY DUTY PAVEMENT (STA 90+17 TO 95+80)  
(STA 106+00 TO 106+39)  
(STA 100+00 TO 100+40)  
(STA 0+00 TO 2+28)
3. FROM STA 100+40 TO 103+81 INSTALL CONCRETE VALLEY GUTTER AND PARKING AS SHOWN ON PLANS INSTEAD OF CURB & GUTTER.
4. REFER TO PLANS FOR LOCATION OF PROPOSED CURB