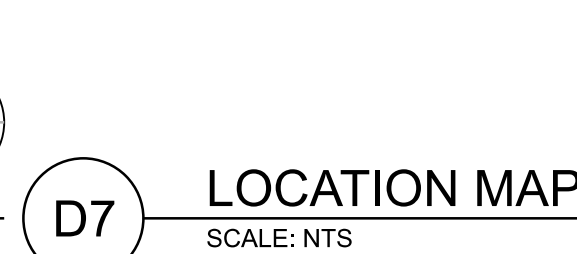
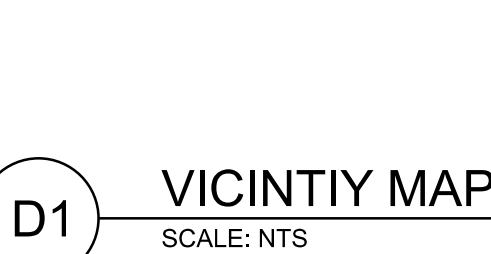




FORT PECK DAM  
MISSOURI RIVER  
POWERHOUSE 1  
BRIDGE CRANE RAIL REPLACEMENT



G13 SITE PHOTO  
SCALE: NTS

THIS PROJECT WAS DESIGNED BY THE HYDROELECTRIC DESIGN CENTER OF THE U.S. ARMY CORPS OF ENGINEERS  
THE INITIALS OR SIGNATURES AND REGISTRATION DESIGNATIONS OF INDIVIDUALS APPEAR ON THESE PROJECT  
DOCUMENTS WITHIN THE SCOPE OF THEIR EMPLOYMENT AS REQUIRED BY ER 1110-1-8152.

SUBMITTED BY:

APPROVED BY:

JAMES D. CALNON, P.E.  
CHIEF, MECHANICAL/STRUCTURAL BRANCH

DATE \_\_\_\_\_

JORDAN S. FINK, P.E.  
DIRECTOR, HYDROELECTRIC DESIGN CENTER

DATE

[illegible]

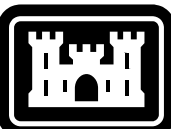
U.S. ARMY CORPS OF ENGINEERS OMAHA DISTRICT 1916 CAPITAL AVE # 3300 OMAHA, NEBRASKA	DESIGNED BY: S. KIM	ISSUE DATE: APRIL 2021
	DRAWN BY: ROSSENTHAL	NOTATION NO.: W0000000068
	CHECKED BY: B. STOLT	CONTRACT NO.:
U.S. ARMY CORPS OF ENGINEERS HYDROELECTRIC DESIGN CENTER PORTLAND, OREGON	DESIGNED BY: P.E. ZEPHAN S. D	DRAWING NUMBER: F589.FPPI.001.1R
	FILENAME: ANSI.D	G-001XXX.dgn

FORT PECK DAM  
MISSOURI RIVER  
POWERHOUSE 1  
BRIDGE CRANE RAIL REPLACEMENT  
PROJECT LOCATION AND  
VICINITY MAPS

SHEET ID

G-001



	1	2	3	4	5	6	7	8	9	10	11	12	13	14	15	16	17	18	19	20		
P																					<div><div></div><div>US Army Corps of Engineers®</div></div>	
N	INDEX TO DRAWINGS										INDEX TO REFERENCE DRAWINGS											
	SHEET NO.	FILE NUMBER	TITLE								FILE NUMBER	TITLE								AS-BUILT REQ'D		
M	CONTRACTED DRAWINGS										RESOURCE DRAWINGS											
	GENERAL										POWERHOUSE DRAWINGS											
L	G-001		COVER SHEET, PHOTO, -- LOCATION & VICINITY MAP								FP17-70-102	MACHINE SHOP FLOOR PLAN - EL 2096										
	G-002		INDEX TO DRAWINGS								FP17-70-231A	INTERIOR ELEVATIONS - GENERATOR ROOM - SHEET NO 1 - ARCHITECTURAL										
K	G-901		BRIDGE CRANE RAIL -- PHOTOGRAPHS								FP17-70-232A	INTERIOR ELEVATIONS - GENERATOR ROOM - SHEET NO 2 - ARCHITECTURAL										
											FP17-70-133	UPSTREAM POWERHOUSE WALL CONCRETE										
J											FP17-70-204	MISCELLANEOUS STEEL SHEET NO 2										
											FP17-70-251	EXTERIOR WALL SECTIONS SHEET NO 1										
H											FP17-70-260	MISCELLANEOUS STRUCTURAL STEEL SHEET NO 1										
	SD101		BRIDGE CRANE RAIL PLAN -- REMOVAL								ST. JOSEPH STRUCTURE STEEL CO DRAWINGS											
SD501		CRANE RAIL DETAIL -- REMOVAL																				
G	STRUCTURAL REMOVE																					
F	STRUCTURAL INSTALL																					
	S-101		BRIDGE CRANE RAIL PLAN -- INSTALL								41	CRANE BEAMS										
E	S-501		CRANE RAIL DETAIL -- INSTALL								42	CRANE BEAMS										
											43	CRANE BEAMS & RAILS										
D																						
C																						
B																						
A																						
<div><div>FORT PECK DAM MISSOURI RIVER POWERHOUSE 1 BRIDGE CRANE RAIL REPLACEMENT</div><div>INDEX OF DRAWINGS</div><div>SHEET ID G-002</div></div>																						



[illegible]

U.S. ARMY CORPS OF ENGINEERS S. KIM DRAWN BY: WJ128F2220068 CHECKED BY: B. STOLL SUBMITTED BY: JORDAN S. FINK P.E. SIZE: A3/D4	1616 CAPITAL AVE # 3300 OMAHA, NEBRASKA	SOLICITATION NO: WJ128F2220068 CONTRACT NO.: DRAWING NUMBER: FILE NAME: C:\P1\10011R_G3001200.dwg
---	--	--

FOSTER DAM AND RESERVOIR  
MISSOURI RIVER  
POWERHOUSE 1  
BRIDGE CRANE RAIL REPLACEMENT  
BRIDGE CRANE RAIL PHOTOGRAPHS

SHEET ID

G-901

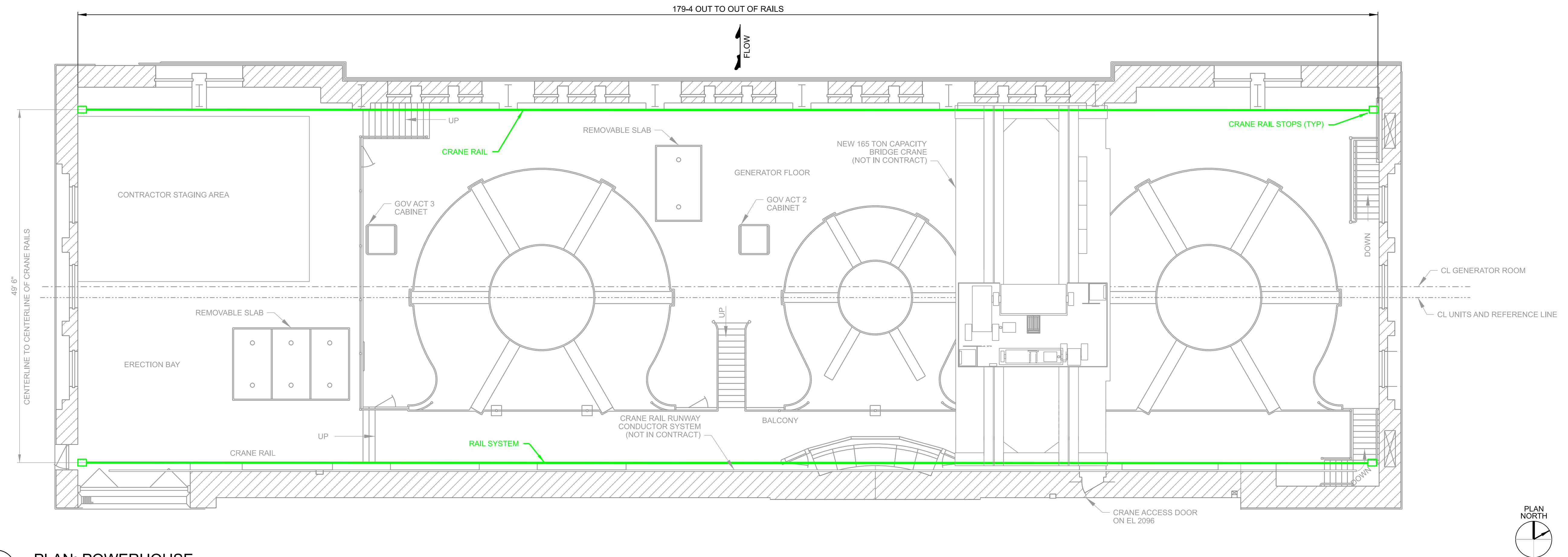


[illegible]

U.S. ARMY CORPS OF ENGINEERS HYDROELECTRIC DESIGN CENTER PORTLAND, OREGON		DRAWN BY: J. ROSENTHAL		SOLICITATION NO.: W9729F-22R0088	
1616 CAPITAL AVE # 3300 OMAHA, NEBRASKA		CHECKED BY:		CONTRACT NO.:	
B. STOLT		SUBMITTED BY: JORDAN S. FINK, P. E.		DRAWING NUMBER:	
SIZE:		FILENAME:		ANSI D	
FP89 FPPI.001R		SD101XXX.dgn			

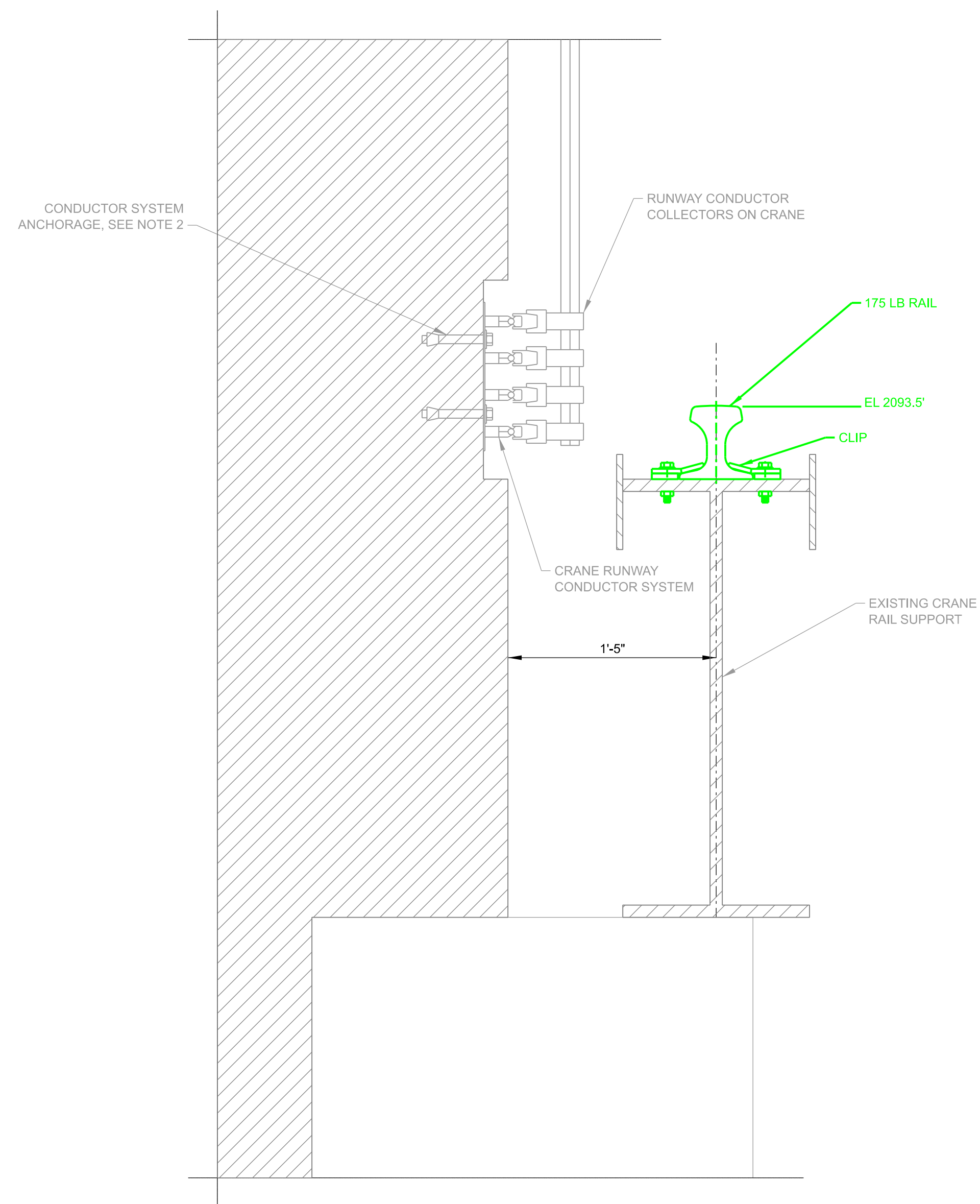
POWERHOUSE 1  
BRIDGE CRANE RAIL REPLACEMENT  
BRIDGE CRANE RAIL - PLAN  
REMOVAL

SHEET ID  
SD101



**E2** **PLAN: POWERHOUSE**  
SCALE: 1/8" = 1'-0"





## C3 BRIDGE CRANE DETAIL

SCALE: 1 1/2"=1'-0"



**U.S. Army Corps  
Engineers®**

[illegible]

1916 CAPITAL AVE # 3300 OMAHA, NEBRASKA	DRAWN BY: JRS/ENTHAL	SOLICITATION NO.: W9128F-22R0068
	CHECKED BY:	CONTRACT NO.:
	DESIGNED BY: JORDAN S. FINK, P.E.	DRAWING NUMBER:
U.S. ARMY CORPS OF ENGINEERS HYDROELECTRIC DESIGN CENTER PORTLAND, OREGON	SIZE: FILENAME:	
	ANSI D FPP89 FPP1.00119 SD501XXX.dgn	

CRANE RAIL DETAIL  
REMOVAL

SHEET ID

SD501

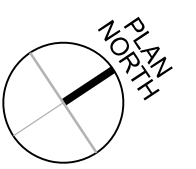


[illegible]

U.S. ARMY CORPS OF ENGINEERS HYDROELECTRIC DESIGN CENTER PORTLAND, OREGON	DRAWN BY: J. ROSENTHAL W9128F-2280068 OMAHA, NEBRASKA	SOLICITATION NO.: W9128F-2280068
	CHECKED BY: B. STOLT	CONTRACT NO.:
	SUBMITTED BY: JORDAN S. FINK, P.E.	DRAWING NUMBER:
	SIZE: FILENAME:	
ANSI D F89 FPI1.001R S-101XXX.dgn		

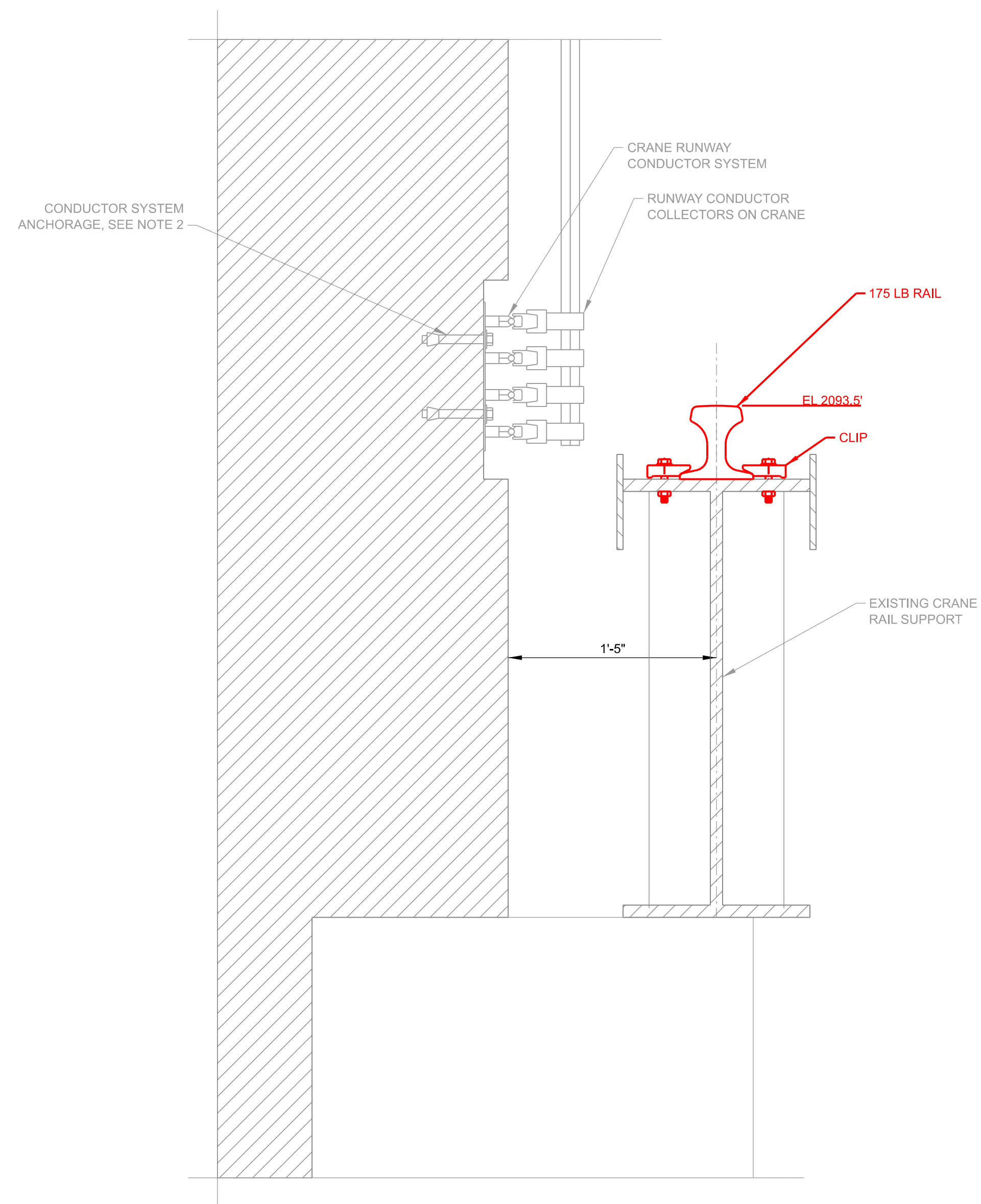
# POWERHOUSE 1 BRIDGE CRANE RAIL REPLACEMENT BRIDGE CRANE RAIL - PLAN INSTALL

SHEET ID  
S-101



**E2** **PLAN: POWERHOUSE**  
SCALE: 1/8" = 1'-0"





C3 BRIDGE CRANE RAIL DETAIL  
SCALE: 1 1/2"=1'-0"

NOTES:

1. REPLACE RAILS AND ALL RAIL HARDWARE PER SPECIFICATION 41 22 14.33 26.
2. PLASTER CORNICE NOT SHOWN, SEE REFERENCE DRAWINGS FOR DETAILS.
3. SEE REFERENCE DRAWINGS FOR DETAILS ON RAIL CLIPS, JOINTS AND CRANE STOP ASSEMBLIES.

FOSTER DAM AND RESERVOIR  
MISSOURI RIVER  
POWERHOUSE 1  
BRIDGE CRANE RAIL REPLACEMENT

## CRANE RAIL DETAIL INSTALL

SHEET ID

S-501