

8

7

6

5

4

3

2

1

GENERAL NOTES:

1. THE VESSEL SHALL BE CLASSIFIED UNDER ABS MALTESE CROSS A1, CIRCLE E, UNRESTRICTED SERVICE AND ICE CLASS CO.

2. ALL MATERIAL SHALL BE ORDINARY STRENGTH STEEL, GRADE A, UNLESS OTHERWISE NOTED.

3. WORKMANSHIP SHALL BE IN ACCORDANCE WITH THE "NOAA STATEMENT OF REQUIREMENTS" AND ACCEPTABLE COMMERCIAL MARINE QUALITY.

4. ALL WELDING SHALL BE IN ACCORDANCE WITH REFERENCE NO. 6

5. COPES, SNIPES AND DRAINS SHALL BE IN ACCORDANCE WITH HMI STANDARDS, REFERENCE NO. 5.

6. ANCHOR CHAIN SHALL BE GRADE 3.

7. ANCHOR CHAIN TO BE PAINTED AND MARKED AS FOLLOWS.

A. ONE LINK EACH SIDE OF THE 15 FATHOM DETACHABLE LINK TO BE PAINTED WHITE.

B. TWO LINKS EACH SIDE OF THE 30 FATHOM DETACHABLE LINK TO BE PAINTED WHITE.

C. THREE LINKS EACH SIDE OF THE 45 FATHOM DETACHABLE LINK TO BE PAINTED WHITE.

MARKING MUST CONTINUE IN THIS FASHION UNTIL THE BITTER END.

D. 15 FATHOM DETACHABLE LINK TO BE PAINTED RED.

E. 30 FATHOM DETACHABLE LINK TO BE PAINTED WHITE.

F. 45 FATHOM DETACHABLE LINK TO BE PAINTED BLUE.

G. 60 FATHOM DETACHABLE LINK TO BE PAINTED RED.

SUBSEQUENT DETACHABLE LINKS MUST BE PAINTED IN COLORS THAT CONTINUE THIS COLOR SEQUENCE.

8. THE FIRST LINK AT EACH SIDE OF THE 15 FATHOM DETACHABLE LINK MUST HAVE 1 TURN OF GALVANIZED WIRE TIGHTLY WOUND AROUND THE STUD. THE SECOND LINK AT EACH SIDE 30 FATHOM DETACHABLE LINK MUST HAVE 2 TURNS OF GALVANIZED WIRE TIGHTLY WOUND AROUND THE STUD. THE THIRD LINK AT EACH SIDE OF THE 45 FATHOM DETACHABLE LINK MUST HAVE 3 TURNS OF GALVANIZED WIRE TIGHTLY WOUND AROUND THE STUD. WIRE MARKING MUST CONTINUE IN THIS FASHION TO THE BITTER END OF THE CHAIN.

9. PLATES AND SHAPES ARE IN IMPERIAL UNITS. DIMENSIONS ARE IN METRIC UNITS.

10. ABS EQUIPMENT No. IS 660.

11. ANCHOR CHAIN SHALL BE SECURED WITH THE CHAIN STOPPERS MOUNTED INTEGRALLY TO THE WINDLASS FRAME.

MATERIAL LIST

ITEM	DESCRIPTION	MATERIAL	SPEC.	UNIT	QTY	REMARKS
1	16" SCH 80 PIPE	STEEL	ABS GRADE A	LF	20	(FOR ANCHOR BOLSTER ONLY)
2	1/2" PLATE	STEEL	ABS GRADE A	SF	12	(FOR ANCHOR BOLSTER ONLY)
3	3/4" PLATE	STEEL	ABS GRADE A	SF	18	(FOR ANCHOR BOLSTER ONLY)
4						

REVISIONS

REV	ZONE	DESCRIPTION	DATE	APPROVED
1	5-A	1. SHT 1, REFERENCES: REVISED REFERENCE 7 TO REFLECT CHANGE IN ANCHOR WINDLASS VENDOR FROM AMCLYDE TO MCELROY AND CHANGED DRAWING NUMBER TO SUIT.	1/29/04 AGE	1/30/04 AGE
	15-C	2. SHT 2, PLAN 15-C: REVISED ANCHOR WINDLASS FOUNDATION FOOTPRINT TO SUIT NEW MCELROY WINDLASS.		
	VAR	3. SHT 2, SECT. 13-A & C, ELEV. 15-A: DELETED EXISTING ANCHOR WINDLASS AND ADDED NEW ANCHOR WINDLASS; REVISED FOUNDATION TO SUIT NEW WINDLASS FOOTPRINT. REVISED REF LOCATION DIM FROM 406 TO 420 FROM FRONT OF FDN TO DRUM CL		
	9-A	4. SHT. 2, DET. 9-A: IDENTIFIED PEAR-SHAPED JOINING LINK AT TOP OF CHAIN ASSY, AND ADDED SWIVEL AND PEAR-SHAPED JOINING LINK AT BOTTOM OF CHAIN ASSY. ADDITIONS IS TO MATCH WHAT WAS PURCHASED.		
		ITEM 1 - 3 PER REWORK #741-0005 ITEM 4 PER ENGINEERING DEVELOPMENT		
2		1. EXTENDED HULL APPLICABILITY TO INCLUDE HULL 1956. ITEM 1 PER ENGINEERING DEVELOPMENT.	4/18/05 AGE	4/20/05 FH
3		1. EXTENDED HULL APPLICABILITY TO INCLUDE HULL 1957. 2. THIS REVISION REFLECTS AS-BUILT CONDITIONS FOR HULL 1953. ITEM 1 & 2 PER ENGINEERING DEVELOPMENT.	8/14/06 MDP	8/31/06 SM
4		1. SHT 2, PLAN 15-C: ADDED DEVILS CLAW FWD OF ANCHOR WINDLASS. 2. SHT 2, DETAIL 10-A: ADDED DEVILS CLAW DETAILS. 3. SHT 2, DETAIL 11-B: ADDED DETAIL FOR DEVIL CALW PLATE. ITEM 1 THRU 3 PER YARD ENGINEERING CHANGE THIS REVISION APPLICABLE TO M283 & M284 ONLY	8/14/06 MDP	

AS-BUILT

3

2

1

SH

DESCRIPTION

DRAWING INDEX

8

7

6

5

4

3

2

1

8

7

6

5

4

3

2

1

8

7

6

5

4

3

2

1

8

7

6

5

4

3

2

1

8

7

6

5

4

3

2

1

8

7

6

5

4

3

2

1

8

7

6

5

4

3

2

1

3

2

1

SH

DESCRIPTION

DRAWING INDEX

8

7

6

5

4

3

2

1

8

7

6

5

4

3

2

1

8

7

6

5

4

3

2

1

8

7

6

5

4

3

2

1

8

7

6

5

4

3

2

1

8

7

6

5

4

3

2

1

8

7

6

5

4

3

2

1

8

7

6

5

4

3

2

1

8

7

6

5

4

3

2

1

8

7

6

5

4

3

2

1

8

7

6

5

4

3

2

1

8

7

6

5

4

3

2

1

8

7

6

5

4

3

2

1

8

7

6

5

4

3

2

1

8

7

6

5

4

3

2

1

8

7

6

5

4

3

2

1

8

7

6

5

4

3

2

1

8

7

6

5

4

3

2

1

8

7

6

5

4

3

2

1

8

7

6

5

4

3

2

1

8

7

6

5

4

3

2

1

8

7

6

5

4

3

2

1

8

7

6

5

4

3

2

1

8

7

6

5

4

3

2

1

8

7

6

5

4

3

2

1

8

7

6

5

4

3

2

1

8

7

6

5

4

3

2

1

8

7

6

5

4

3

2

1

8

7

6

5

4

3

2

1

8

7

6

5

4

3

2

1

8

7

6

5

4

3

2

1

8

7

6

5

4

3

2

1

8

7

6

5

4

3

2

1

8

7

6

5

4

3

2

1

8

7

6

5

4

3

2

1

8

7

6

5

4

3

2

1

8

7

6

5

4

3

2

1

8

7

6

5

4

3

2

1

8

7

6

5

4

3

2

1

8

7

6

5

4

3

2

1

8

7

6

5

4

3

2

1

8

7

6

5

4

3

2

1

8

7

6

5

4

3

2

1

8

7

6

5

4

3

2

1

8

7

6

5

4

3

2

1

8

7

6

5

4

3

2

1

8

7

6

5

4

3

2

1

8

7

6

5

4

3

2

1

8

7

6

5

4

3

2

1

8

7

6

5

4

3

2

1

8

7

6

5

4

3

2

1

8

7

6

5

4

3

2

1

8

7

6

5

4

3

2

1

8

7

6

5

4

3

2

1

8

7

6

5

4

3

2

1

8

7

6

5

4

3

2

1

8

7

6

5

4

3

2

1

8

7

6

5

4

3

2

1

8

7

6

5

4

3

2

1

8

7

6

5

4

3

2

1

8

7

6

5

4

3

2

1

8

7

6

5

4

3

2

1

8

7

6

5

4

3

2

1

8

7

6

5

4

3

2

1

8

7

6

5

4

3

2

1

8

7

6

5

4

3

2

1

8

7

6

5

4

3

2

1

8

7

6

5

4

3

2

1

8

7

6

5

4

3

2

1

8

7

6

5

4

3

2

1

8

7

6

5

4

3

2

1

8

7

6

5

4

3

2

1

8

7

6

5

4

3

2

1

8

7

6

5

4

3

2

1

8

7

6

5

4

3

2

1

8

7

6

5

4

3

2

1

8

7

6

5

4

3

2

1

8

7

6

5

4

3

2

1

8

7

6

5

4

3

2

1

8

7

6

5

4

3

2

1

8

7

6

5

4

3

2

1

8

7

6

5

4

3

2

1

8

7

6

5

4

3

2

1

8

7

6

5

4

3

2

1

8

7

6

5

4

3

2

1

8

7

6

5

4

3

2

1

8

7

6

5

4

3

2

1

8

7

6

5

4

3

2

1

8

7

6

5

4

3

2

1

8

7

6

5

4

3

2

1

8

7

6

5

4

3

2

1

8

7

6

5

4

3

2

1

8

7

6

5

4

3

2

1

8

7

6

5

4

3

2

1

8

7

6

5

4

3

2

1

8

7

6

5

4

3

2

1

8

7

6

5

4

3

2

1

8

7

6

5

4

3

2

1

8

7

6

5

4

3

2

1

8

7

6

5

4

3

2

1

8

7

6

5

4

3

2

1

8

7

6

5

4

3

2

1

8

7

6

5

4

3

2

1

8

7

6

5

4

3

2

1

8

7

6

5

4

3

2

1

8

7

6

5

4

3

2

1

8

7

6

5

4

3

2

1

8

7

6

5

4

3

2

1

8

7

6

5

4

3

2

1

8

7

6

5

4

3

2

1

8

7

6

5

4

3

2

1

8

7

6

5

4

3

2

1

8

7

6

5

4

3

2

1

8

7

6

5

4

3

2

1

8

7

6

5

4

3

2

1

8

7

6

5

4

3

2

1

8

7

6

5

4

3

2

1

8

7

6

5

4

3

2

1

8

7

6

5

4

3

2

1

8

7

6

5

4

3

2

1

8

7

6

5

4

3

2

1

8

7

6

5

4

3

2

1

8

7

6

5

4

3

2

1

8

7

6

5

4

3

2

1

8

7

6

5

4

3

2

1

8

7

6

5

4

3

2

1

8

7

6

5

4

3

2

1

8

7

6

5

4

3

2

1

8

7

6

5

4

3

2

1

8

7

6

5

4

3

2

1

8

7

6

5

4

3

2

1

8

7

6

5

4

3

2

1

8

7

6

5

4

3

2

1

8

7

6

5

4

3

2

1

8

7

6

5

4

3

2

1

8

7

6

5

4

3

2

1

8

7

6

5

4

3

2

1

8

7

6

5

4

3

2

1

8

7

6

5

4

3

2

1

8

7

6

5

4

3

2

1

8

7

6

5

4

3

2

1

8

7

6

5

4

3

2

1

8

7

6

5

4

3

2

1

8

7

6

5

4

3

2

1

8

7

6

5

4

3

2

1

8

7

6

5

4

3

2

1

8

7

6

5

4

3

2

1

8

7

6

5

4

3

2

1

8

7

6

5

4

3

2

1

8

7

6

5

4

3

2

1

8

7

6

5

4

3

2

1

8

7

6

5

4

3

2

1

8

7

6

5

4

3

2

1

8

7

6

5

4

3

2

1

8

7

6

5

4

3

2

1

8

7

6

5

4

3

2

1

8

7

6

5

4

3

2

1

8

7

6

5

4

3

2

1

8

7

6

5

4

3

2

1

8

7

6

5

4

3

2

1

8

7

6

5

4

3

2

1

8

7

6

5

4

3

2

1

8

7

6

5

4

3

2

1

8

7

6

5

4

3

2

1

8

7

6

5

4

3

2

1

8

7

6

5

4

3

2

1

8

7

6

5

4

3

2

1

8

7

6

5

4

3

2

1

8

7

6

5

4

3

2

1

8

7

6

5

4

3

2

1

8

7

6

5

4

3

2

1

8

7

6

5

4

3

2

1

8

7

6

5

4

3

2

1

8

7

6

5

4

3

2

1

8

7

6

5

4

3

2

1

8

7

6

5

4

3

2

1

8

7

6

5

4

3

2

1

8

7

6

5

4

3

2

1

8

7

6

5

4

3

2

1

8

7

6

5

4

3

2

1

8

7

6

5

4

3

2

1

8

7

6

5

4

3

2

1

8

7

6

5

4

3

2

1

8

7

6

5

4

3

2

1

8

7

6

5

4

3

2

1

8

7

6

5

4

3

2

1

8

7

6

5

4

3

2

1

8

7

6

5

4

3

2

1

8

7

6

5

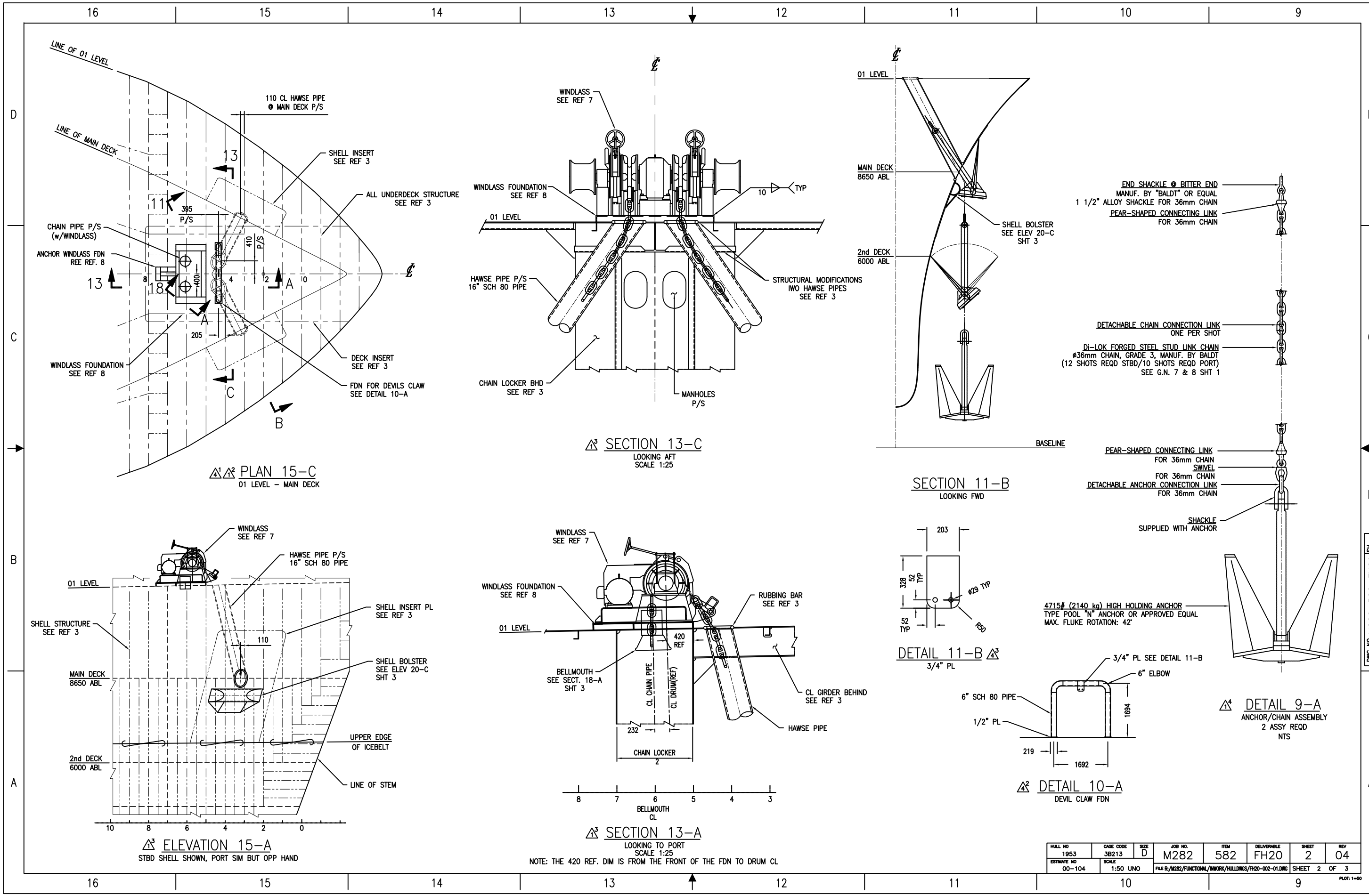
4

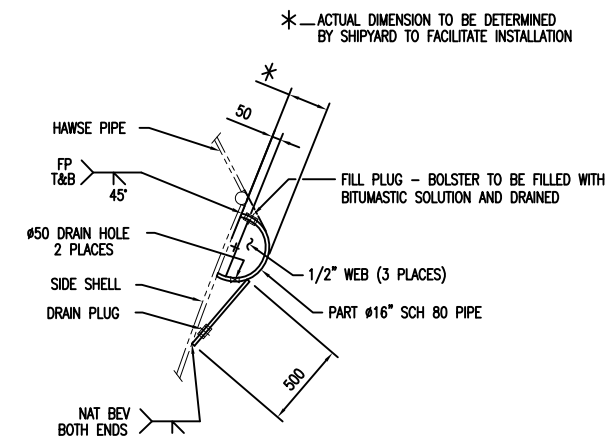
3

2

1

8

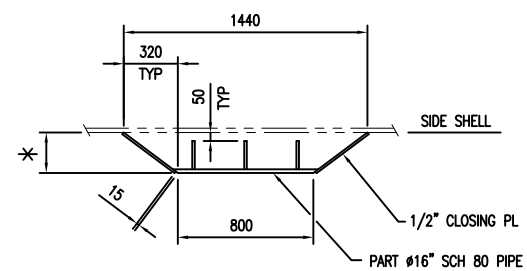




SECTION 18-C
LOOKING FWD

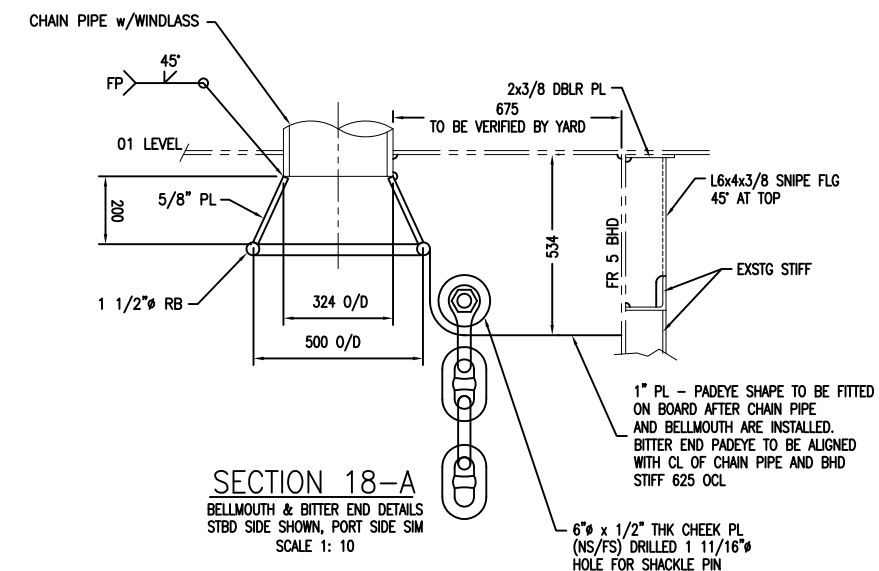
ELEVATION 20-C

STBD SHELL BOLSTER
TRUE VIEW ON SHELL
PORT SIDE SIM BUT OPP HAND



PLAN 20-B

*—ACTUAL DIMENSION TO BE DETERMINED
BY SHIPYARD TO FACILITATE INSTALLATION



SECTION 18-A

BELLMOUTH & BITTER END DETAILS
STBD SIDE SHOWN, PORT SIDE SIM
SCALE 1: 10

HULL NO 1953	CAGE CODE 3B213	SIZE D	JOB NO. M282	ITEM 582	DELIVERABLE FH20	SHEET 3	REV 0
ESTIMATE NO 00-104	SCALE 1:20 UNO	FILE R:\M282\FUNCTIONAL\ISSUED\HULLINGS\FH20-003-00.DWG			SHEET 3 OF 3		

PLOT: 1=