

#1 Addendum #1	1/4/23
Revisions:	Date

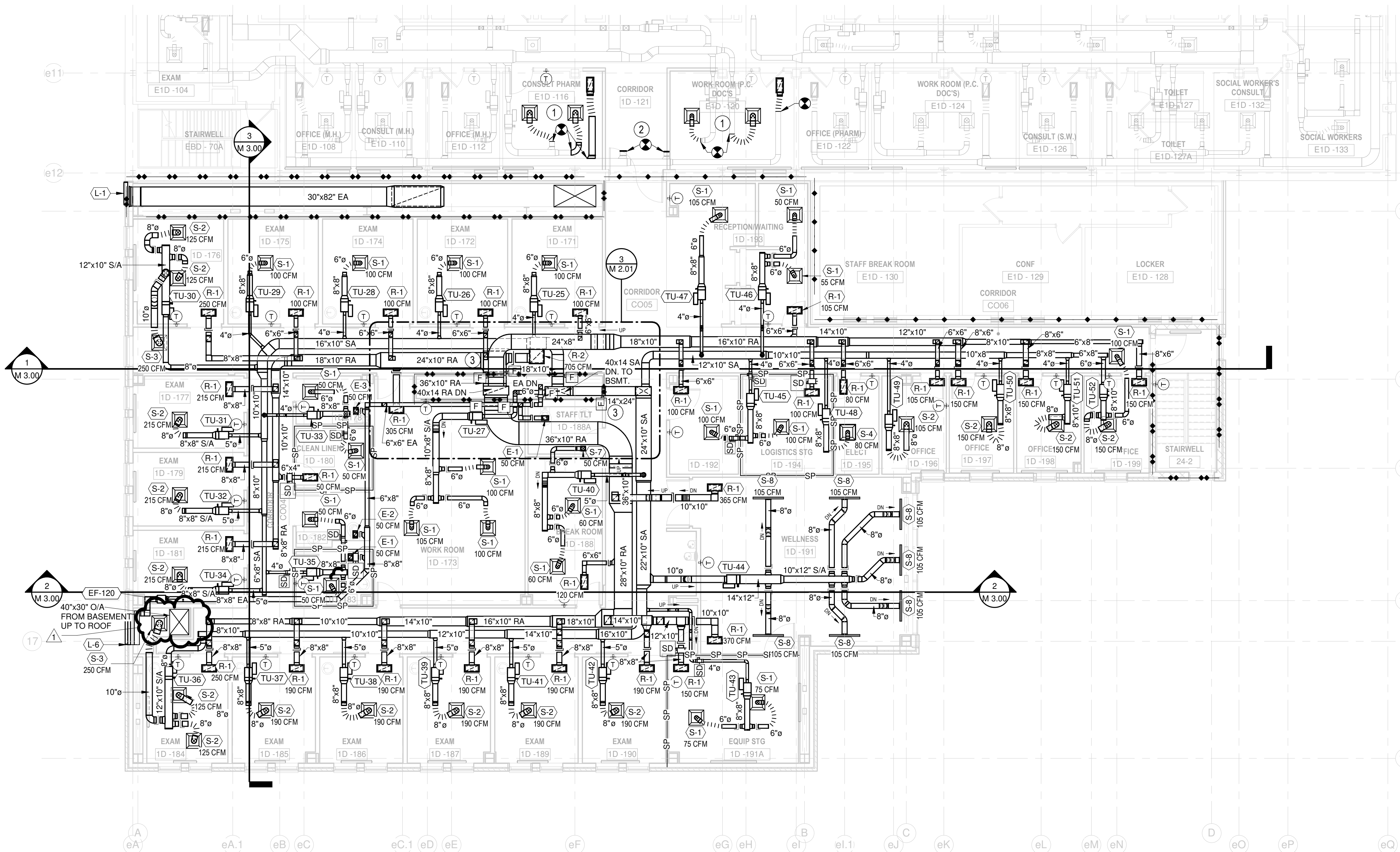
SUMMIT FIRE CONSULTING
575 MINNEHAHA AVE WEST
ST. PAUL, MINNESOTA 55103
(612) 387-7050



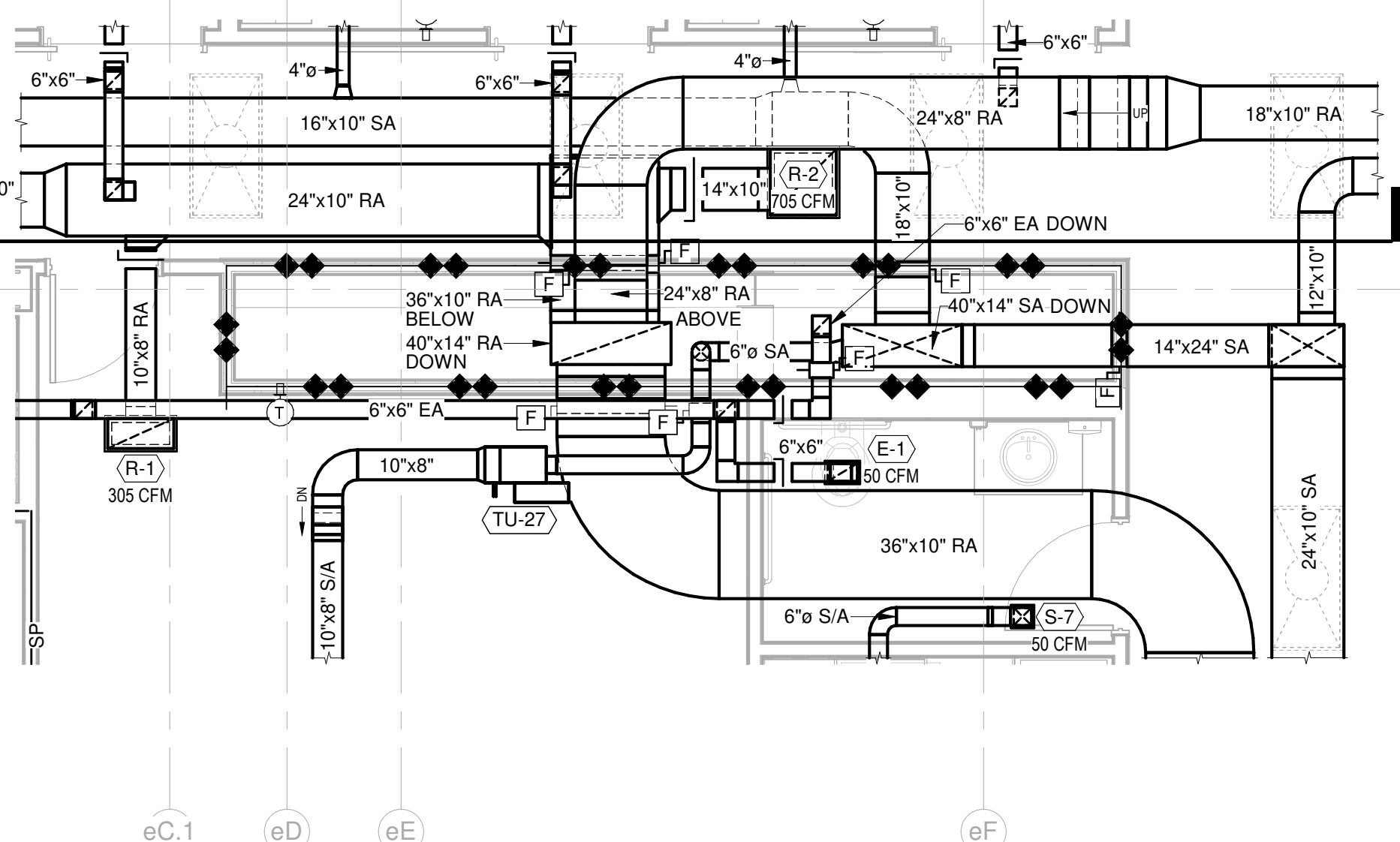
Department of
Veterans Affairs

SPECIFIC NOTES

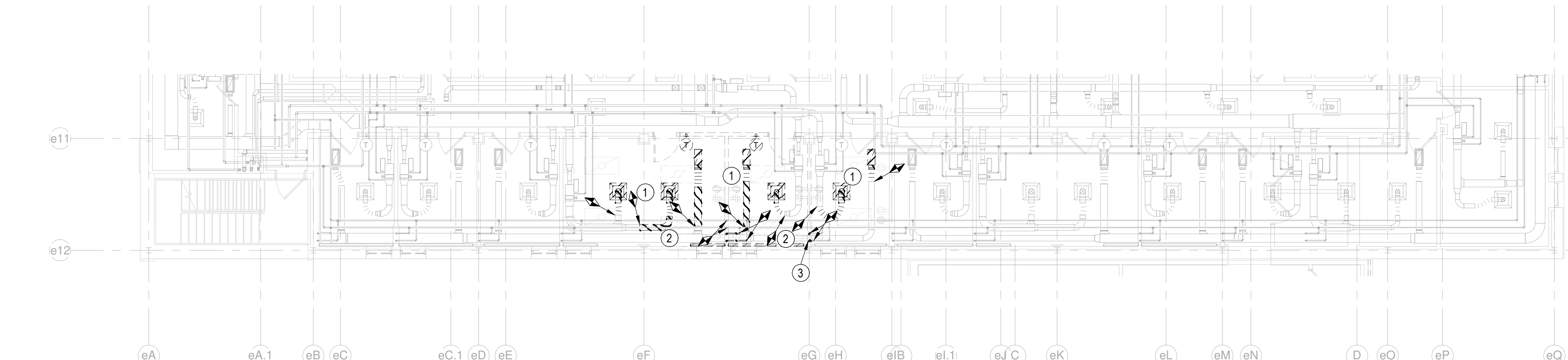
- RELOCATE EXISTING CEILING DIFFUSERS AND DUCTS AS SHOWN. RECONNECT TO EXISTING TU'S (VAV'S).
- CAP OPEN DUCTS.
- LOCATE MECHANICAL CHASE FIRE DAMPERS ABOVE ACT IN AN ACCESSIBLE / MAINTAINABLE LOCATION.



1 FIRST FLOOR HVAC PLAN
1/8" = 1'-0"



3 ENLARGED HVAC PLAN AT CHASE
1/4" = 1'-0"



2 FIRST FLOOR MECHANICAL DEMOLITION PLAN
1/8" = 1'-0"

DEMOLITION NOTES

- CAREFULLY REMOVE EXISTING DIFFUSERS AND DUCTS AS SHOWN FOR RE-INSTALLATION IN NEW CEILINGS. SEE REMODEL PLAN ABOVE AND ARCHITECTURAL PLANS.
- REMOVE EXISTING FIN-TUBE RADIATORS IN PATH OF NEW WALLS AND CORRIDOR. DEMOLISH PIPING BACK TO MAINS IN CEILING AND CAP AT MAINS. SEE ARCHITECTURAL PLANS FOR LIMITS OF REMODEL IN EXISTING BUILDING. SEAL HOLES AND PATCH FINISHES.
- REROUTE PIPING IN DEMOLISHED WALL AS NEEDED AND RECONNECT TO EXISTING FIN-TUBE RADIATOR.

CONSTRUCTION DOCUMENTS

Revision Number Associated with Clouded Area

#	Revision	Date
1	Addendum #1	1/4/23
2	Revisions:	Date

CONSULTANTS:

-Calibre
CALIBRE
9090 S RIDGELINE BLVD, SUITE 105
HIGHLANDS RANCH, COLORADO 80129
PHONE: (303) 730-0434

Albertson Engineering Inc.
ALBERTSON ENGINEERING, INC.
315 NORTH MAIN AVENUE, SUITE 200
SIOUX FALLS, SOUTH DAKOTA 57104
PH: (605) 274-0880

SUMMIT
FIRE PROTECTION
SUMMIT FIRE CONSULTING
575 MINNEHAHA AVE WEST
ST. PAUL, MINNESOTA 55103
(612) 387-7050

ARCHITECT

FOURFRONT
DESIGN INC.
FOURFRONT DESIGN, INC.
517 7TH STREET
RAPID CITY, SOUTH DAKOTA 57701
PH: (605) 342-9470
FAX: (605) 342-2377
WWW.FOURFRONTDESIGN.COM

Drawing Title

First Floor HVAC Plan

Approved: Project Director

FARGO VAHCS

Project Title

EXPAND BLDG. 1 FOR
PRIMARY CARE

Location 2101 ELM STREET
FARGO, ND 58102

Date 11 / 16 / 2021

Checked MK

Drawn JB

Project Number

437-315

Building Number

1

Drawing Number

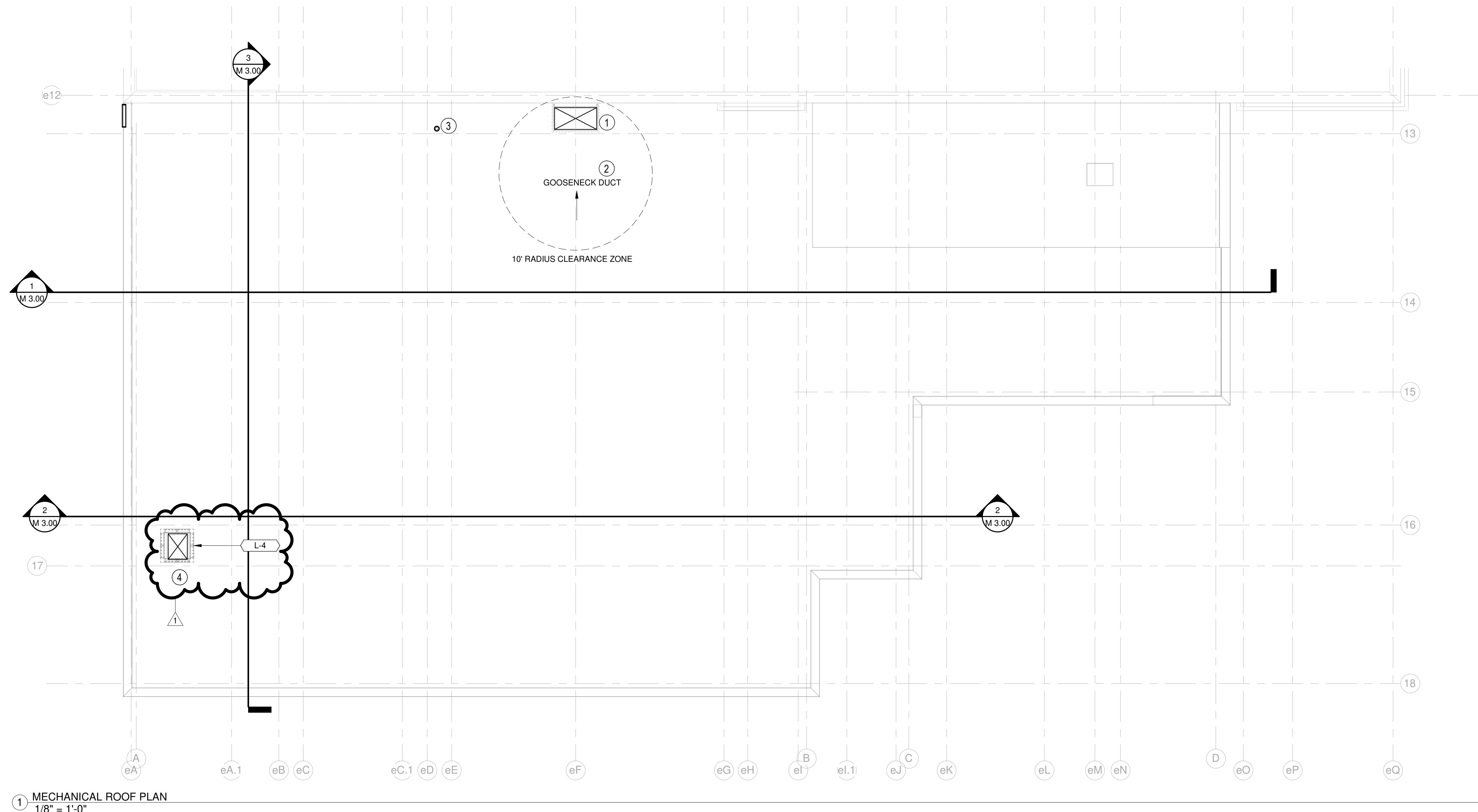
M 2.01

Dwg. 107 of 128

Office of
Construction
and Facilities
Management

Department of
Veterans Affairs

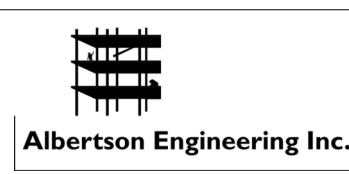
- ① INSTALL GOOSENECK ON 12" CURB. EXTEND CURB TO EXISTING WALL AND PROVIDE ROOF-TO-WALL FLASHING SRR DETAIL 1/M5.01
- ② PROVIDE BIRD AND INSECT SCREEN.
- ③ STEAM VENT.
- ④ INSTALL PENTHOUSE LOUVER ON 18" CURB WITH BIRD AND INSECT SCREEN.



① MECHANICAL ROOF PLAN
1/8" = 1'-0"


#1 Addendum #1	1/4/23
Revisions:	Date

Calibre CALIBRE
9090 S RIDGELINE BLVD, SUITE 105
HIGHLANDS RANCH COLORADO 80
PHONE (303) 730-0434



ALBERTSON ENGINEERING, INC.
315 NORTH MAIN AVENUE, SUITE 200
SIOUX FALLS, SOUTH DAKOTA 57104
PH: (605) 274-0880

SUMMIT FIRE CONSULTING
575 MINNEHAHA AVE WEST
ST. PAUL, MINNESOTA 55103
(612) 387-7050



FOURFRONT
DESIGN INC.

FOURFRONT DESIGN, INC.
517 7TH STREET
RAPID CITY, SOUTH DAKOTA 57701
PH: (605) 342-9470
FAX: (605) 342-2377
WWW.FOURFRONTDESIGN.COM

	Drawing Title
--	---------------

Mechanical Roof Plan

Approved: Project Director

FARGO VAHCS

Project Title

EXPAND BLDG. 1 FOR
PRIMARY CARE

Location	2101 ELM STREET FARGO, ND 58102
----------	------------------------------------

Date
11 / 16 / 2021

Checked
MK

Draw	.JB
------	-----

	Project Number
--	----------------

437-315

Building Number 1

M 2.10

Dwg. 108 of 128

Office of
Construction
and Facilities
Management



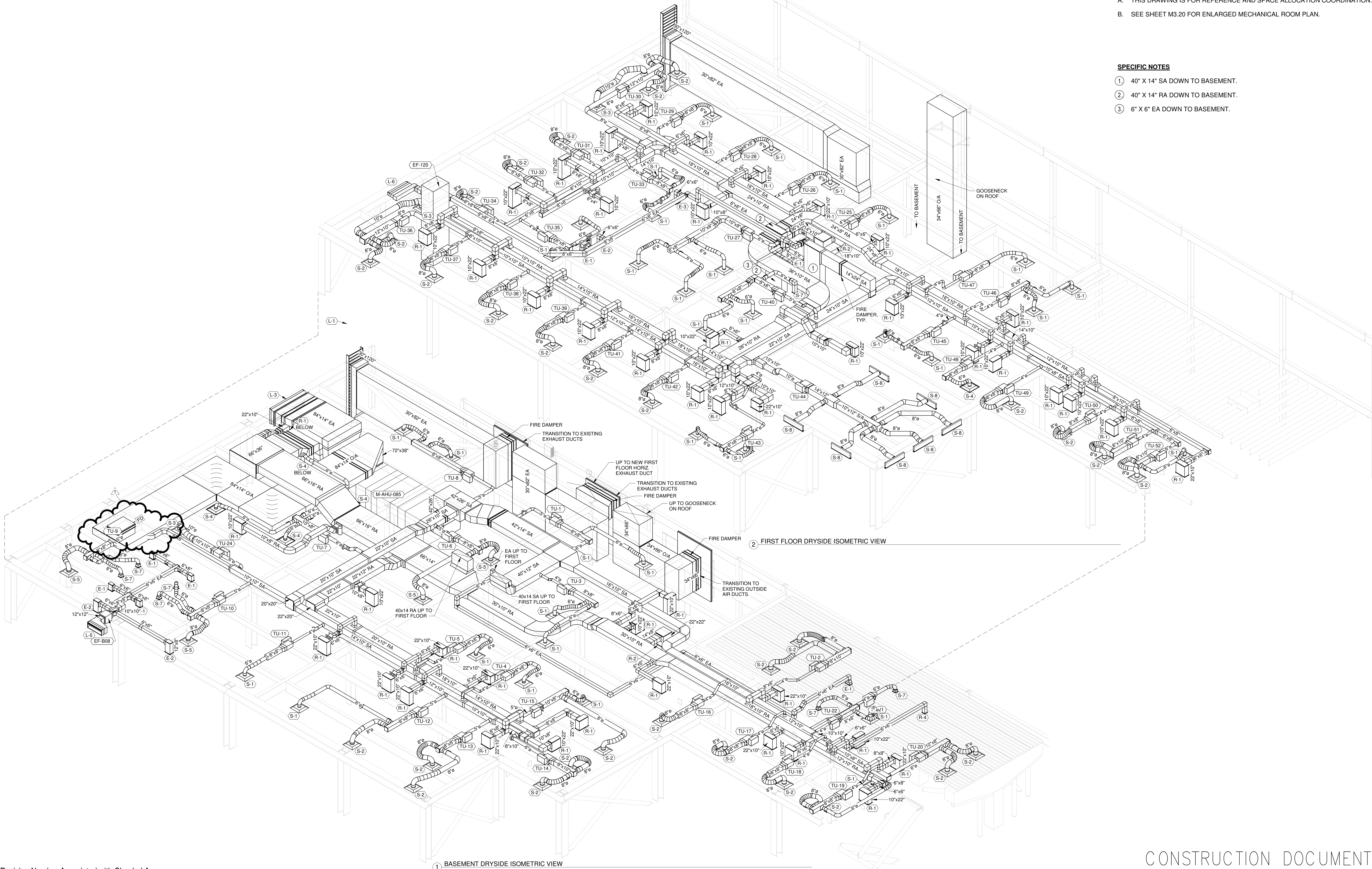
CONSTRUCTION DOCUMENTS

GENERAL NOTES

- A. THIS DRAWING IS FOR REFERENCE AND SPACE ALLOCATION COORDINATION.
B. SEE SHEET M3.20 FOR ENLARGED MECHANICAL ROOM PLAN.

SPECIFIC NOTES

- ① 40" X 14" SA DOWN TO BASEMENT.
② 40" X 14" RA DOWN TO BASEMENT.
③ 6" X 6" EA DOWN TO BASEMENT.



Revision Number Associated with Clouded Area

#	Revision	Date
1	ADDENDUM #1	1/4/23
2		
3		
4		
5		
6		
7		
8		
9		
10		
11		
12		
13		
14		
15		
16		
17		
18		
19		
20		
21		
22		
23		
24		
25		
26		
27		
28		
29		
30		
31		
32		
33		
34		
35		
36		
37		
38		
39		
40		
41		
42		
43		
44		
45		
46		
47		
48		
49		
50		
51		
52		
53		
54		
55		
56		
57		
58		
59		
60		
61		
62		
63		
64		
65		
66		
67		
68		
69		
70		
71		
72		
73		
74		
75		
76		
77		
78		
79		
80		
81		
82		
83		
84		
85		
86		
87		
88		
89		
90		
91		
92		
93		
94		
95		
96		
97		
98		
99		
100		

CONSULTANTS:

-Calibre CALIBRE
9090 S RIDGELINE BLVD, SUITE 105
HIGHLANDS RANCH, COLORADO 80129
PHONE: (303) 730-0434

Albertson Engineering Inc.

SUMMIT
FIRE PROTECTION

ALBERTSON ENGINEERING, INC.
315 NORTH MAIN AVENUE, SUITE 200
SIOUX FALLS, SOUTH DAKOTA 57104
PH: (605) 274-0880

SUMMIT FIRE CONSULTING
575 MINNEHAHA AVE WEST
ST. PAUL, MINNESOTA 55103
(612) 387-7050

ARCHITECT

FOURFRONT
DESIGN INC.

FOURFRONT DESIGN, INC.
517 7TH STREET
RAPID CITY, SOUTH DAKOTA 57701
PH: (605) 342-9470
FAX: (605) 342-2377
WWW.FOURFRONTDESIGN.COM

Drawing Title

HVAC Isometric Views

Approved: Project Director

FARGO VAHCS

Project Title

EXPAND BLDG. 1 FOR
PRIMARY CARE

Location 2101 ELM STREET
FARGO, ND 58102

Date 11 / 16 / 2021

Checked MK

Drawn JB

Project Number

437-315

Building Number

1

Drawing Number

M 3.10

Dwg. 110 of 128

Office of
Construction
and Facilities
Management

**Department of
Veterans Affairs**

CONSTRUCTION DOCUMENTS

RADIANT CEILING PANELS										
EQUIP TAG	MFGR	TYPE	PPG (%)	GPM	MBH	EWT (F)	LWT (F)	ROWS	SIZE (FT)	NOTES
RP-1	STERLING	MODULAR RADIANT CEILING PANEL	50	0.1	1.27	180	150	6	4/2	1,2,3
RP-2	STERLING	MODULAR RADIANT CEILING PANEL	50	0.1	1.27	180	150	6	4/2	1,2,3
RP-3	STERLING	MODULAR RADIANT CEILING PANEL	50	0.1	1.27	180	150	6	4/2	1,2,3
RP-4	STERLING	MODULAR RADIANT CEILING PANEL	50	0.1	1.27	180	150	6	4/2	1,2,3
RP-5	STERLING	MODULAR RADIANT CEILING PANEL	50	0.1	1.27	180	150	6	4/2	1,2,3
RP-6	STERLING	MODULAR RADIANT CEILING PANEL	50	0.1	1.27	180	150	6	4/2	1,2,3
RP-7	STERLING	MODULAR RADIANT CEILING PANEL	50	0.1	1.27	180	150	6	4/2	1,2,3

- NOTES:
1. PROVIDESTANDARD FOIL FACE INSULATION.
 2. UNITS DERATED FOR 50% PPG.
 3. MANUFACTURER IS BASIS OF DESIGN ONLY, OTHER MANUFACTURERS ALLOWED.

LOUVERS SCHEDULE											
EQUIP TAG	MFGR	MODEL NUMBER	TYPE	SERVICE	CFM	SP (IN)	WIDTH (IN)	HEIGHT (IN)	DEPTH (IN)	FREE AREA (SF)	NOTES
L-1	ARCHITECTURAL LOUVERS	E6DP	EXTRUDED DRAINABLE BLADE, COLOR BY ARCHITECH	EXHAUST	-	-	36	288	6	34.5	2
L-2	NOT USED	-	-	-	-	-	-	-	-	-	-
L-3	GREENHECK	EDJ-601	EXTRUDED DRAINABLE HEAD	EXHAUST	9,080	0.23	84	26	36	7.5	2
L-4	GREENHECK	ESD-635PD	GRAVITY LOUVERED PENTHOUSE	INTAKE	9,080	0.18	48	40	-	10.2	2
L-5	GREENHECK	ESD-635	EXTRUDED DRAINABLE HEAD	EXHAUST	390	0.08	36	12	6	0.5	1,2
L-6	GREENHECK	ESD-202	EXTRUDED DRAINABLE HEAD	EXHAUST	250	0.13	48	6	2	0.3	1,2

- NOTES:
1. PROVIDE WITH MOTORIZED DAMPER.
 2. MANUFACTURER IS BASIS OF DESIGN ONLY. OTHER MANUFACTURERS ALLOWED.

EXHAUST FAN SCHEDULE												
EQUIP TAG	MFGR	TYPE	MODEL NUMBER	EXHAUST (CFM)	SP (IN)	HP	FAN RPM	VOLTAGE (V/PH.HZ)	SOUND (SONES)	L/W/H (IN)	WEIGHT (LBS)	NOTES
EF-B08	GREENHECK	INLINE	SQ-98-VG	390	1	1/3	1,817	115/1/60	13.7	21/15/15	56	1,2
EF-120	GREENHECK	INLINE	SQ-97	250	1.6	1/2	2,479	208/3/60	22	21/15/15	52	1,2

- NOTES:
1. PROVIDE DISCONNECT.
 2. MANUFACTURER IS BASIS OF DESIGN. OTHER MANUFACTURERS ALLOWED.

EXPANSION TANKS										
EQUIP TAG	MFGR	MODEL	TYPE	TANK VOLUME (GAL)	TANK ACCEPT (GAL)	HEIGHT (IN)	DIAMETER (IN)	WEIGHT (LBS)	NOTES	
EXP-85	TACO	CBX84-125	BLADDER	22	12	39	16	150	1	

- NOTES:
1. MANUFACTURER IS BASIS OF DESIGN. OTHER MANUFACTURERS ALLOWED.

AIR SEPARATOR SCHEDULE									
EQUIP TAG	MFGR	MODEL	SYSTEM	CONNECTION SIZE (IN)	FLOW (GPM)	HEIGHT (IN)	DIAMETER (IN)	NOTES	
AS-85	TACO	4902ADT-125	HOT WATER	2	73	17	10	10	

- NOTES:
1. MANUFACTURER IS BASIS OF DESIGN. OTHER MANUFACTURERS ALLOWED.

CONDENSATE PUMPS											
BASIS OF DESIGN				SYSTEM	CIRCULATING FLUID				MOTOR		NOTES
EQUIP TAG	MFGR	TYPE	MODEL		FLUID	GPM	PUMP FT HEAD	TEMP (° F)	NOM. HP	VOLT/ PHASE	
BD117-CP-1	SKIDMORE	DUPLEX	VCS-151 1/2	CONDENSATE	WATER	22.5	34.5	180	1/2	208/3	1,2
NOTES	1. MANUFACTURER IS BASIS OF DESIGN. OTHER MANUFACTURERS WILL BE ALLOWED. 2. PROVIDE 3551 NEMA 1 CONTROL PANEL AND 45 GALLON RECEIVER.										

- NOTES:
1. MANUFACTURER IS BASIS OF DESIGN. OTHER MANUFACTURERS WILL BE ALLOWED.
 2. PROVIDE 3551 NEMA 1 CONTROL PANEL AND 45 GALLON RECEIVER.

POT FEEDER SCHEDULE								
EQUIP TAG	MFGR	MODEL	TYPE	SYSTEM	TANK VOLUME (GAL)	HEIGHT (IN)	DIAMETER (IN)	NOTES
PF-1	GTP	DB2/QC-VPDB	DOME BOTTOM FEEDER	HOT WATER	2	27	6	1,2

- NOTES:
1. PROVIDE WITH QUICK CONNECT WITH VALVE PACKAGE
 2. BASIS OF DESIGN. OTHER MANUFACTURERS ALLOWED.

FIN TUBE RADIATORS															
EQUIP TAG	MFGR	FLUID	GPM	MBH	PPG VELOCITY (FT/SEC)	EWT (°F)	LWT (°F)	PRESSURE DROP (FT)	FINS/FOOT	ELEMENT LENGTH (FT)	ROWS	TUBE DIAMETER (IN)	HEIGHT	ALUMINUM FINS	NOTES
FT-01	MODINE	50% PPG	0.43	4.1	3	180	160	0.5	34	7	2	0.75	14	3.25"X2.75"	1
FT-02	MODINE	50% PPG	0.25	2.3	3	180	160	0.5	34	4	2	0.75	14	3.25"X2.75"	1
FT-03	MODINE	50% PPG	0.37	3.5	3	180	160	0.5	34	6	2	0.75	14	3.25"X2.75"	1
FT-04	MODINE	50% PPG	0.31	2.9	3	180	160	0.5	34	5	2	0.75	14	3.25"X2.75"	1
FT-05	MODINE	50% PPG	0.37	3.5	3	180	160	0.5	34	6	2	0.75	14	3.25"X2.75"	1
FT-08	MODINE	50% PPG	0.43	4.1	3	180	160	0.5	34	7	2	0.75	14	3.25"X2.75"	1
FT-09	MODINE	50% PPG	0.34	3.2	3	180	160	0.5	34	5 1/2	2	0.75	14	3.25"X2.75"	1
FT-10	MODINE	50% PPG	0.34	3.2	3	180	160	0.5	34	5 1/2	2	0.75	14	3.25"X2.75"	1
FT-11	MODINE	50% PPG	0.34	3.2	3	180	160	0.5	34	5 1/2	2	0.75	14	3.25"X2.75"	1
FT-12	MODINE	50% PPG	0.43	4.1	3	180	160	0.5	34	7	2	0.75	14	3.25"X2.75"	1
FT-13	MODINE	50% PPG	0.43	4.1	3	180	160	0.5	34	7	2	0.75	14	3.25"X2.75"	1
FT-14	MODINE	50% PPG	0.49	4.7	3	180	160	0.5	34	8	2	0.75	14	3.25"X2.75"	1
FT-15	MODINE	50% PPG	0.49	4.7	3	180	160	0.5	34	8	2	0.75	14	3.25"X2.75"	1
FT-16	MODINE	50% PPG	0.25	2.3	3	180	160	0.5	34	4	2	0.75	14	3.25"X2.75"	1
FT-17	MODINE	50% PPG	0.37	3.5	3	180	160	0.5	34	6	2	0.75	14	3.25"X2.75"	1
FT-18	MODINE	50% PPG	0.37	3.5	3	180	160	0.5	34	6	2	0.75	14	3.25"X2.75"	1
FT-19	MODINE	50% PPG	0.31	2.9	3	180	160	0.5	34	5	2	0.75	14	3.25"X2.75"	1
FT-20	MODINE	50% PPG	0.19	1.8	3	180	160	0.5	34	3	2	0.75	14	3.25"X2.75"	1
FT-24	MODINE	50% PPG	0.37	3.5	3	180	160	0.5	34	6	2	0.75	14	3.25"X2.75"	1
FT-25	MODINE	50% PPG	0.31	2.9	3	180	160	0.5	34	5	2	0.75	14	3.25"X2.75"	1
FT-26	MODINE	50% PPG	0.25	2.3	3	180	160	0.5	34	4	2	0.75	14	3.25"X2.75"	1
FT-27	MODINE	50% PPG	0.31	2.9	3	180	160	0.5	34	5	2	0.75	14	3.25"X2.75"	1
FT-28	MODINE	50% PPG	0.25	2.3	3	180	160	0.5	34	4	2	0.75	14	3.25"X2.75"	1
FT-29	MODINE	50% PPG	0.25	2.3	3	180	160	0.5	34	4	2	0.75	14	3.25"X2.75"	1
FT-30	MODINE	50% PPG	0.19	1.8	3	180	160	0.5	34	3	2	0.75	14	3.25"X2.75"	1
FT-31	MODINE	50% PPG	0.25	2.3	3	180	160	0.5	34	4	2	0.75	14	3.25"X2.75"	1
FT-32	MODINE	50% PPG	0.25	2.3	3	180	160	0.5	34	4	2	0.75	14	3.25"X2.75"	1
FT-33	MODINE	50% PPG	0.25	2.3	3	180	160	0.5	34	4	2	0.75	14	3.25"X2.75"	1
FT-34	MODINE	50% PPG	0.31	2.9	3	180	160	0.5	34	5	2	0.75	14	3.25"X2.75"	1
FT-35	MODINE	50% PPG	0.37	3.5	3	180	160	0.5	34	6	2	0.75	14	3.25"X2.75"	1

- NOTES:
1. MANUFACTURER IS FOR BASIS OF DESIGN ONLY. OTHER MANUFACTURERS ARE ALLOWED.

HEAT EXCHANGERS											
EQUIP TAG	MFGR	MODEL	CIRCULATING FLUID				PRESSURE DROP	MODULATING CONTROL V (LBS/HR)	STEAM PRESSURE	DIAMETER/ LENGTH	NOTES
			FLUID	GPM	TEMP IN (°F)	TEMP OUT (°F)					
BD117-HX-3	TACO	G08406-S	50% PPG	40	150	180	0.74	619.6	15	8"140"	1
BD117-HX-4	TACO	G08406-S	50% PPG	40	150	180	0.74	619.6	15	8"140"	1

- NOTES:
1. MANUFACTURER IS FOR BASIS OF DESIGN ONLY. OTHER MANUFACTURERS ARE ALLOWED.

CIRCULATING PUMPS												
BASIS OF DESIGN				SYSTEM	CIRCULATING FLUID				% EFF.	MOTOR		NOTES
EQUIP TAG	MFGR	TYPE	MODEL		FLUID	GPM	PUMP FT HEAD	TEMP (° F)		NOM. HP	VOLT/ PHASE	
BD117-HWP-1	TACO	SELF SENSING VERTICAL CLOSE COUPLED	SKV1509A-A-4P-PD	HEATING	50% PPG	35	40	180	53.6	3	208/3	1,2
BD117-HWP-2	TACO	SELF SENSING VERTICAL CLOSE COUPLED	SKV1509A-A-4P-PD	HEATING	50% PPG	35	40	180	53.6	3	208/3	1,2

- NOTES
1. MANUFACTURER IS BASIS OF DESIGN, OTHER MANUFACTURERS WILL BE ALLOWED.
 2. PROVIDE WITH DISCONNECT, INTEGRAL VFD, SUCTION DIFFUSER, AND TRIPLE DUTY VALVE.

UNIT HEATER												
EQUIP TAG	MFGR	MODEL	MBH	GPM	EWT	LWT	PPG%	WPD	CFM	FAN KW	VOLTAGE (V/PH/HZ)	NOTES
UH-01	TRANE	S-A18	16.6	1.92	180	160	50	2.23	500	16	110/1/60	1
NOTES:	1. MANUFACTURER IS BASIS OF DESIGN. OTHER MANUFACTURERS ARE ALLOWED.											

- NOTES:
1. MANUFACTURER IS BASIS OF DESIGN. OTHER MANUFACTURERS ARE ALLOWED.

GRILLES REGISTERS AND DIFFUSERS SCHEDULE										
EQUIP TAG	MFGR	MODEL NUMBER	BORDER	PANEL SIZE	NECK SIZE	MAX CFM	THROW	NC	SP	NOTES
S-1	KRUEGER	1400	LAY-IN	24/24	6"	110	9	-	0.037	1
S-2	KRUEGER	1400	LAY-IN	24/24	8"	220	12	11	0.029	1
S-3	KRUEGER	1400	LAY-IN	24/24	10"	350	15	17	0.070	1
S-4	KRUEGER	51400	SURFACE	24/24	6"	110	9	-	0.037	2,3
S-5	KRUEGER	51400	SURFACE	24/24	8"	220	12	11	0.029	2,3
S-6	KRUEGER	51400	SURFACE	24/24	10"	350	15	17	0.070	2,3
S-7	KRUEGER	5800	SURFACE	8/8	6/6	100	14	-	0.050	2,3,4
S-8	KRUEGER	5800	SURFACE	10/10	8/8	200	19	18	0.050	2,3,4
S-9	KRUEGER	1975	LINEAR SLOT	4/48	6"	125	17	24	0.050	2,6
R-1	KRUEGER	EG10	LAY-IN	24/12	22/10	1000	-	20	0.050	2,3,4
R-2	KRUEGER	EG10	LAY-IN	24/24	22/22	2000	-	20	0.050	2,3,4
E-1	KRUEGER	580	SURFACE	12/8	10/6	100	-	18	0.035	2,3,5
E-2	KRUEGER	580	SURFACE	14/10	12/8	300	-	18	0.028	2,3,5

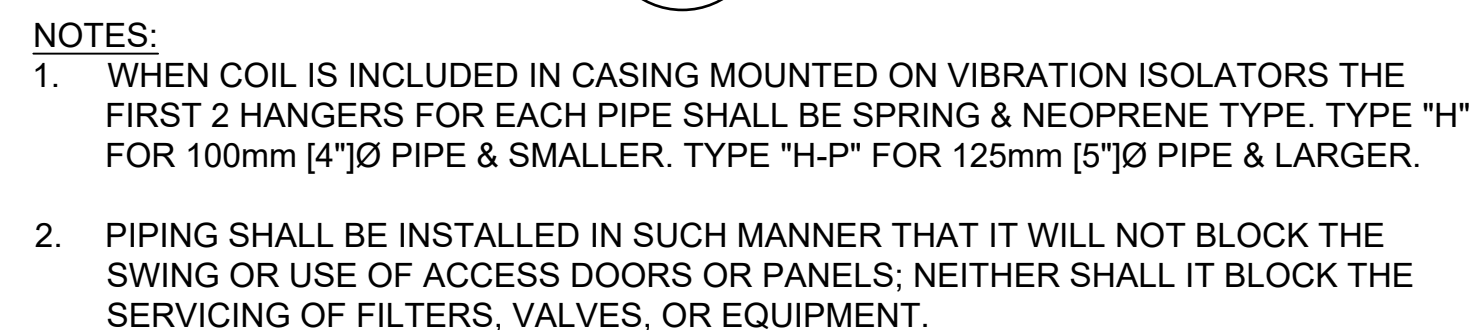
- NOTES:
1. STEEL CONSTRUCTION. MANUFACTURER IS BASIS OF DESIGN, OTHER MANUFACTURERS ALLOWED.
 2. ALUMINUM CONSTRUCTION. MANUFACTURER IS BASIS OF DESIGN, OTHER MANUFACTURERS ALLOWED.
 3. PROVIDE OBD.
 4. DOUBLE DEFLECTION 22.5 DEGREE DEFLECTION.
 5. SINGLE DEFLECTION 35 DEGREE DEFLECTION.
 6. PROVIDE STRAIGHT, 3/4" SLOT, 2 SLOT, BUTT CUT, END CAP AND BLADES.

Revision Number Associated with Clouded Area

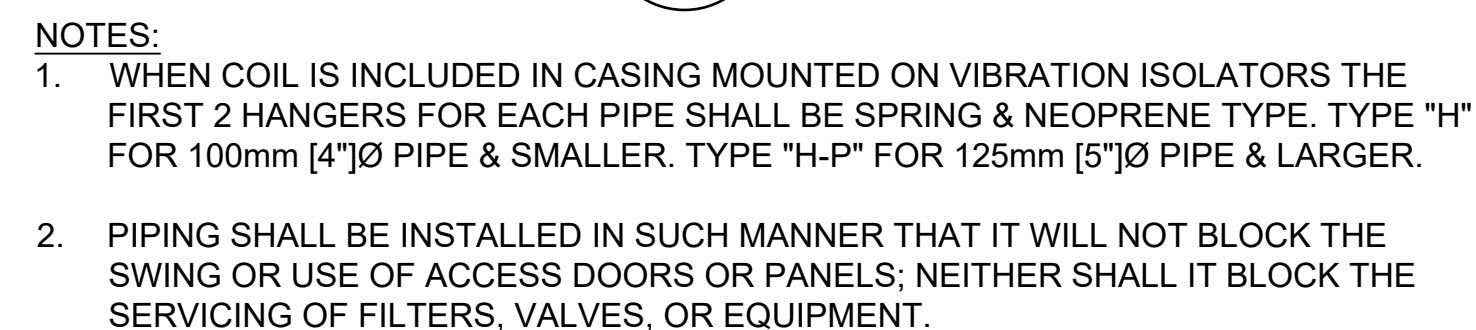
#1 ADDENDUM #1	1/4/23
Revisions:	Date

CONSULTANTS:

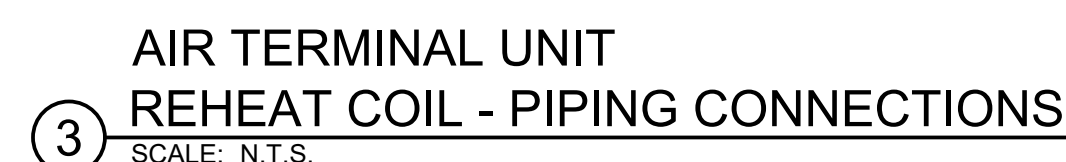
Calibre
CALIBRE
9090 S RIDGELINE BLVD, SUITE



1 WATER COILS - PIPING CONNECTIONS
SCALE: N.T.S.



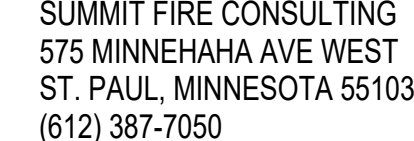
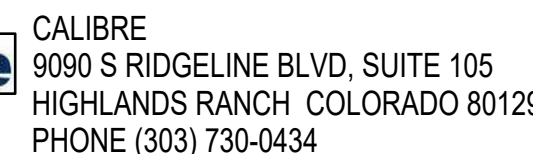
② WATER COILS - PIPING CONNECTIONS
SCALE: N.T.S.



WHERE X = STATIC PRESSURE IN PASCALS

#1 ADDENDUM #1	1/4/23
Revisions:	Date

CONSULTANTS:



Approved: Project Director
FARGO VAHCS

Location	2101 ELM STREET FARGO, ND 58102
----------	------------------------------------

Drawn
JB

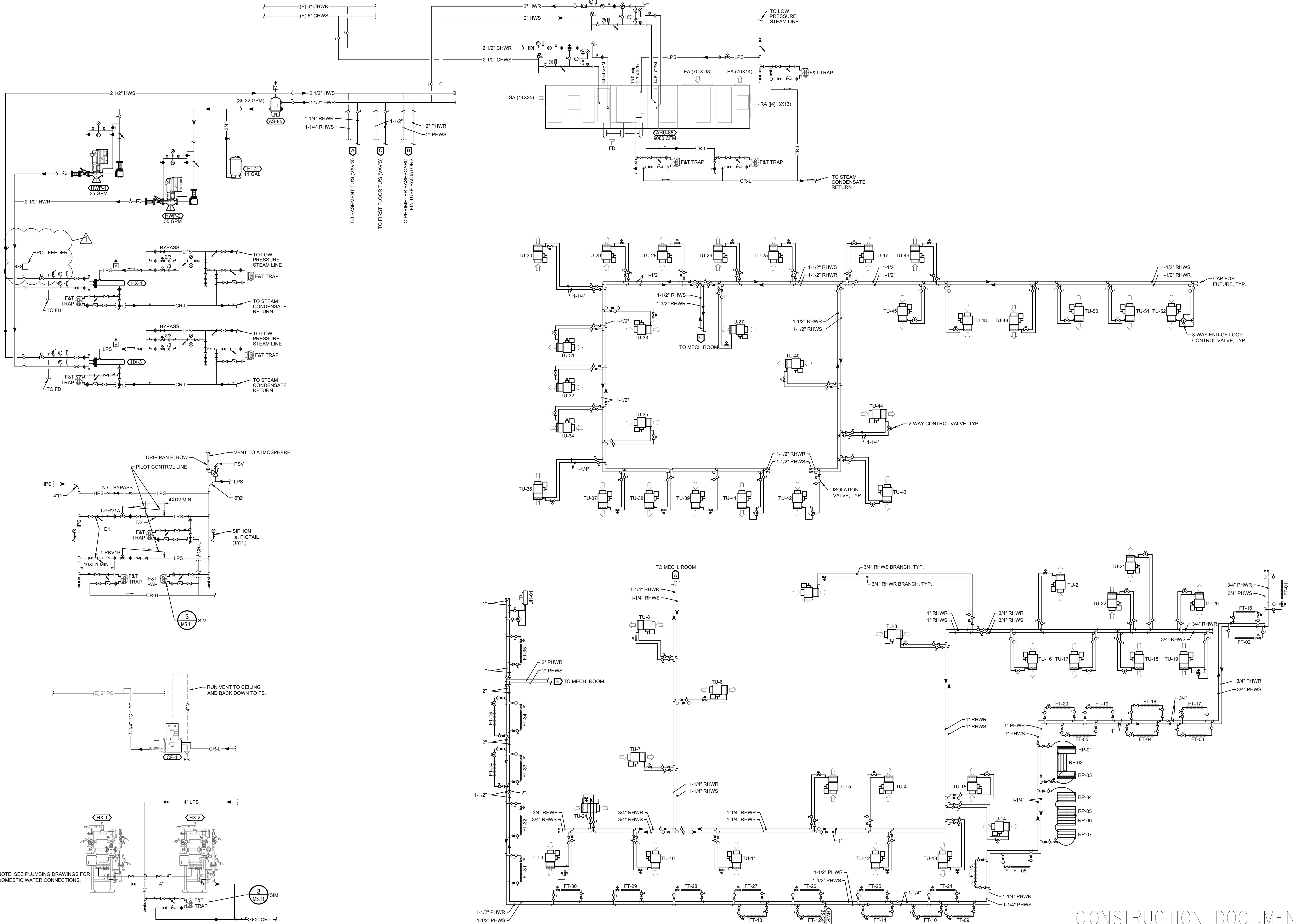
	Drawing Number

M 5.10

Office of
Construction
and Facilities
Management



one and one half inches = one foot
one inch = one foot
three quarters inch = one foot
one half inch = one foot
three eighths inch = one foot
one quarter inch = one foot
one eighth inch = one foot



Revision Number Associated with Clouded Area

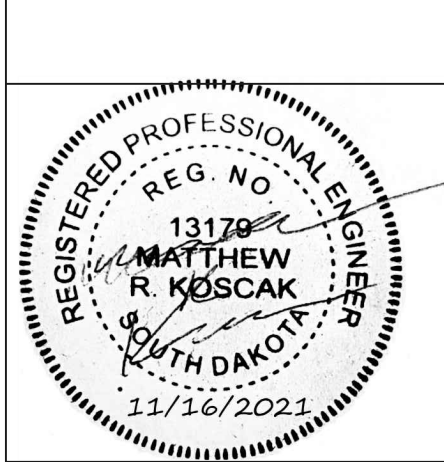
Revisions:	
#1 ADDENDUM #1	1/4/23

CONSULTANTS:

CALIBRE
9090 S RIDGELINE BLVD, SUITE 105
HIGHLANDS RANCH COLORADO 80129
PHONE (303) 730-0434

ALBERTSON ENGINEERING, INC.
315 NORTH MAIN AVENUE, SUITE 200
SIOUX FALLS, SOUTH DAKOTA 57104
PH: (605) 274-0880

SUMMIT FIRE CONSULTING
575 MINNEHAHA AVE WEST
ST. PAUL, MINNESOTA 55103
(612) 387-7050



ARCHITECT/ENGINEERS:

FOURFRONT DESIGN, INC.
517 7TH STREET
RAPID CITY, SOUTH DAKOTA 57701
PH: (605) 342-9470
FAX: (605) 342-2377
WWW.FOURFRONTDESIGN.COM

Drawing Title
**PIPING AND INSTRUMENTATION
DIAGRAM (PID)**

Approved: Project Director
FARGO VAHCS

Project Title
**EXPAND BLDG. 1 FOR
PRIMARY CARE**

Location **2101 ELM STREET
FARGO, ND 58102**

Date
11 / 16 / 2021

Checked
MK

Drawn
JB

Project Number
437-315

Building Number
1

Drawing Number
M 6.01

Dwg. 120 of 128

Office of
Construction
and Facilities
Management

Department of
Veterans Affairs

CONSTRUCTION DOCUMENTS