
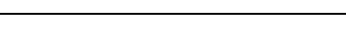


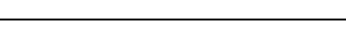

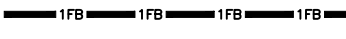
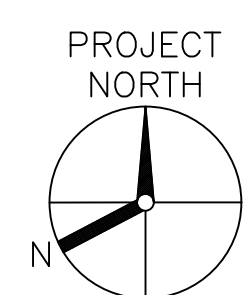
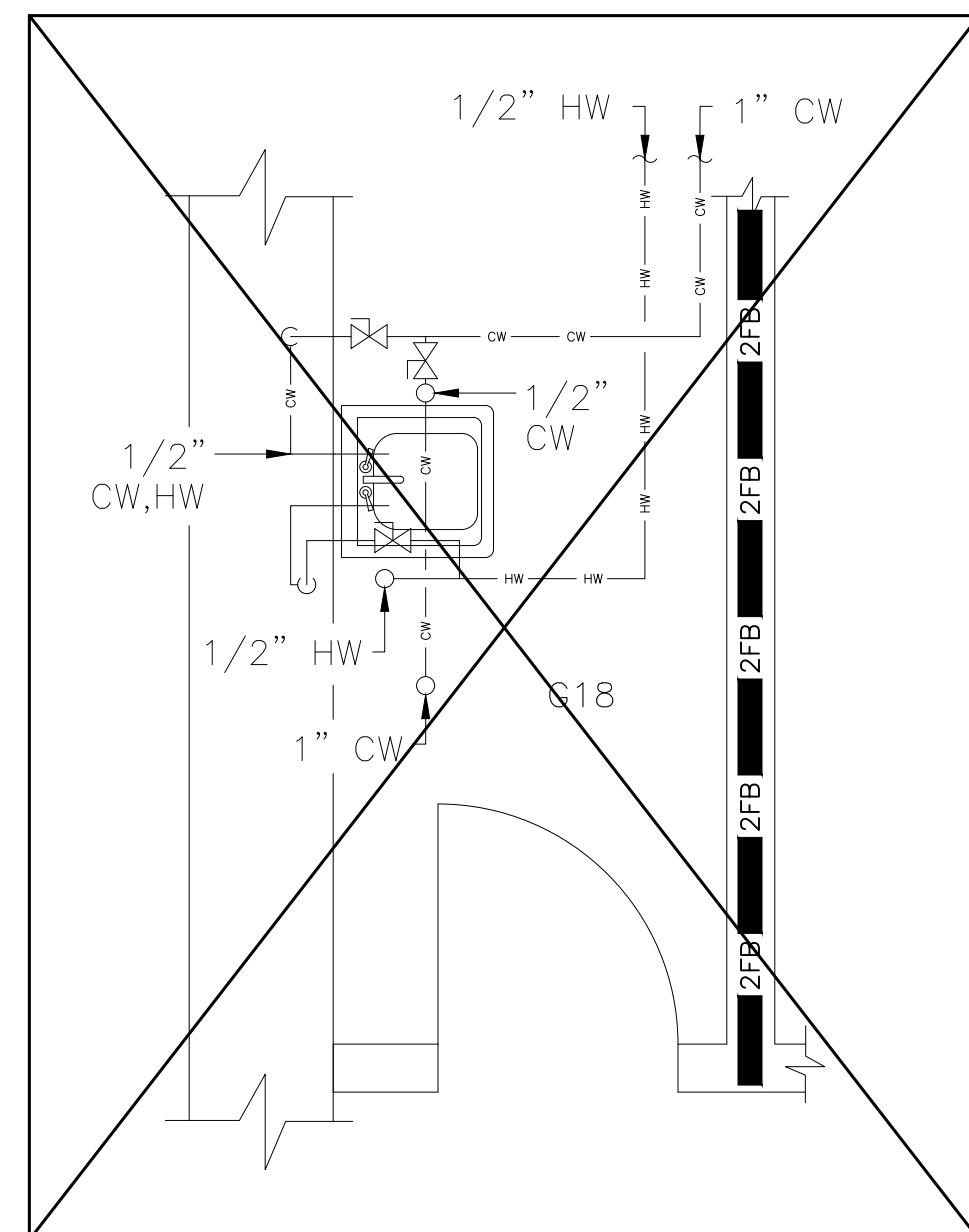


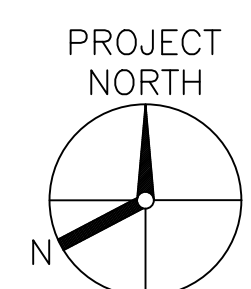
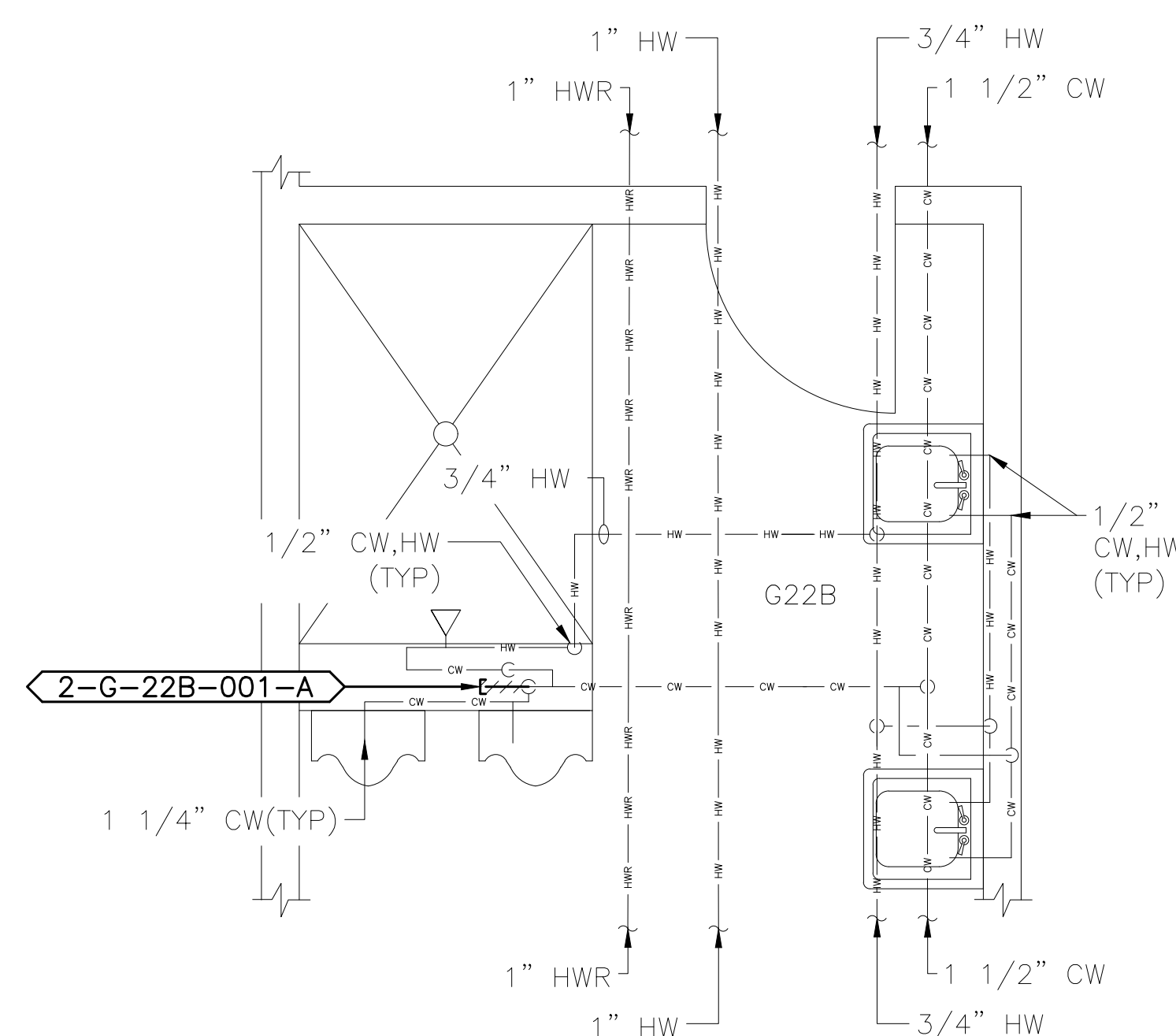
FIRE BARRIER LINETYPES	
	SMOKE RESISTANT BARRIER
	30 MINUTE SMOKE BARRIER
	1 HOUR FIRE/SMOKE BARRIER
	2 HOUR FIRE/SMOKE BARRIER
	1 HOUR FIRE BARRIER
	2 HOUR FIRE BARRIER
	3 HOUR FIRE BARRIER



1  
PL-114

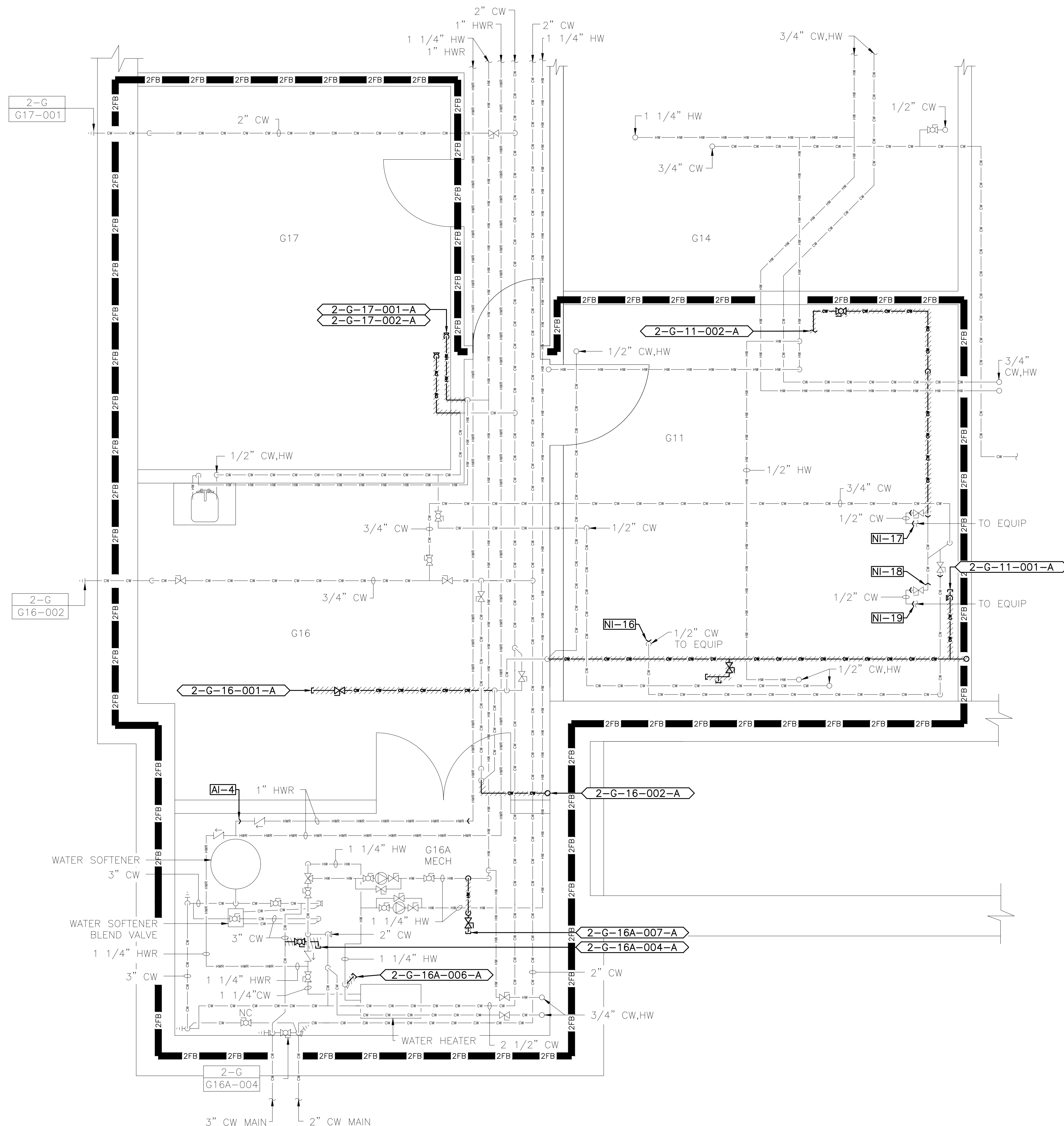
SCALE: 1/2"=1'-0'

NOTE: NO DEMO WORK SHALL BE COMPLETED WITHIN PLAN 1/PL-114.



3  
PL-114

SCALE: 1/2"=1'-0'



A compass rose with a circle divided into four quadrants by a vertical and horizontal line. The text "PROJECT NORTH" is at the top, and "N" is at the bottom left. A thick black arrow points from the center towards the top-left, between the vertical and horizontal lines.

2  
PL-114

SCALE: 1/2"=1'-0'

[illegible]

CONSULTANT

ARCHITECT/ENGINEER OF RECORD



34 BROWN STREET  
HONESDALE, PA 18431  
OFFICE : (570) 253-0846  
FAX : (570) 253-1935  
WWW.NEINFRA.COM

STAMP



Office of  
Construction  
and Facilities  
Management

**VA** U.S. Department  
of Veterans Affairs

Drawing Title	BUILDING 2 GROUND FLOOR EXISTING CONDITIONS/DEMOLITION ENLARGED PLUMBING PLANS
---------------	--

Approved: Project Director  
VA NEW YORK  
HEALTHCARE SYSTEM

Phase	CONSTRUCTION DOCUMENTS
-------	------------------------

Project Title	IMPROVE POTABLE WATER DISTRIBUTION SYSTEM
---------------	---

Location	222 RICHMOND AVENUE BATAVIA, NY 14020
----------	--

Issue Date	06/08/2022
------------	------------

Checked	D I E
---------	-------

Drawn	ERO
-------	-----

Project Number	
----------------	--

Building Number  
2

	Drawing Number
--	----------------

PL-114

6/14/2009 12:39:03 PM

File Path

VA FORM 08 - 6231



PLUMBING FIELD STUDY KEY SYMBOLS	
TYPE A — PIPE LENGTH GREATER THAN TWICE THE DIAMETER OF THE PIPE SIZE TERMINATING AT CAP, VALVE, OR FITTING.	
TYPE B — PIPE LENGTH GREATER THAN TWICE THE DIAMETER OF THE PIPES TERMINATING AT AN INFREQUENTLY USED PLUMBING FIXTURE.	
TYPE C — PIPE LENGTH GREATER THAN 25 FEET TERMINATING AT A FREQUENTLY USED PLUMBING FIXTURE	
XXX-XX-XXX-XXX	DEAD LEG TAG
XXX-XX-XXX-XXX	BACK FLOW PREVENTER TAG
XX-XX XXX-XXX	CROSS-CONNECTION TAG
////	REMEDATE DEAD LEG
NI-X	NON-INSULATED PIPE REFER TO SCHEDULE

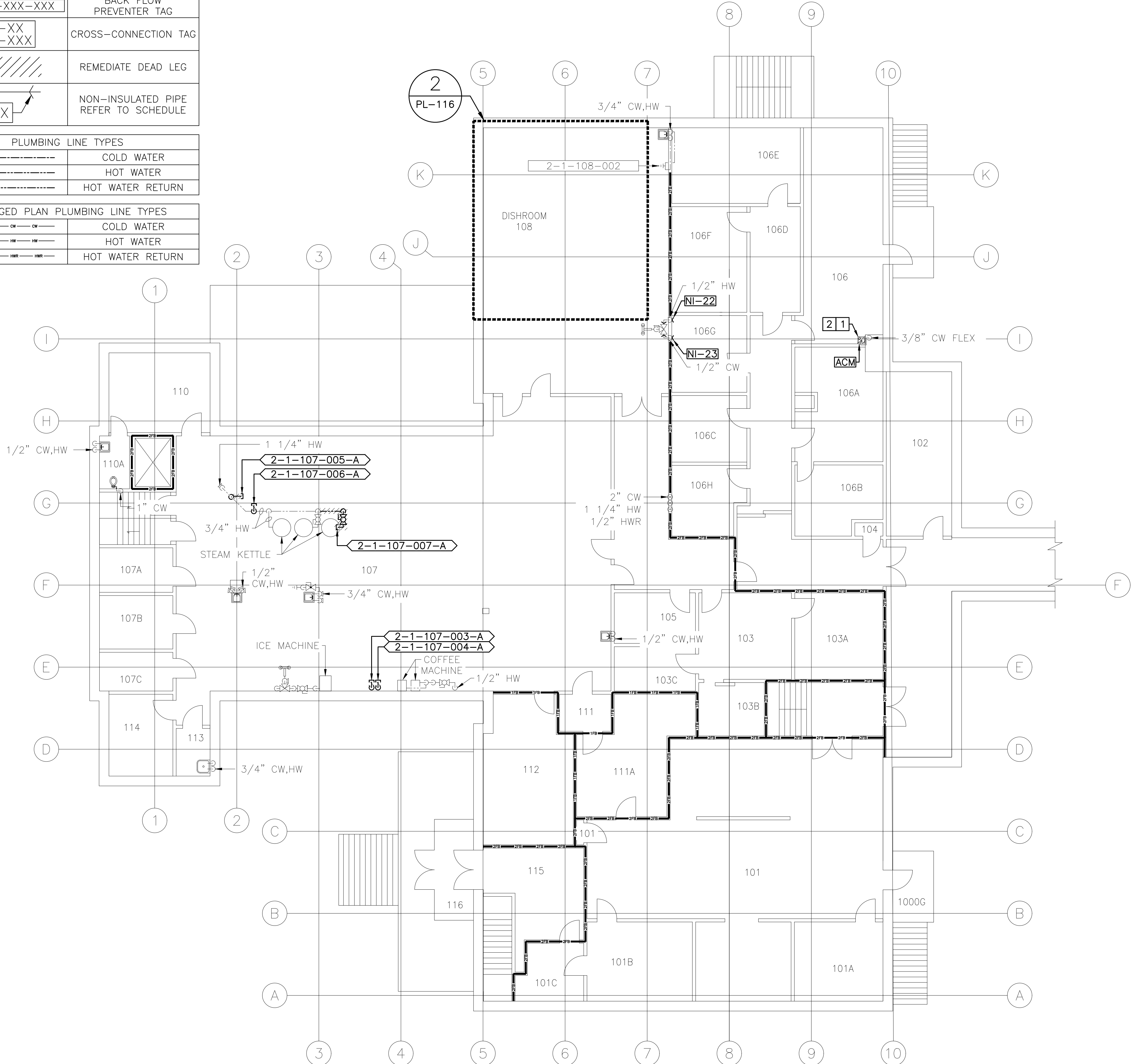
PLUMBING LINE TYPES	
—	COLD WATER
—	HOT WATER
—	HOT WATER RETURN

ENLARGED PLAN PLUMBING LINE TYPES	
—	COLD WATER
—	HOT WATER
—	HOT WATER RETURN

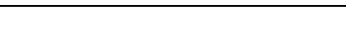
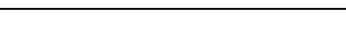
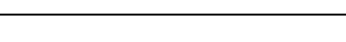
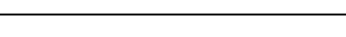
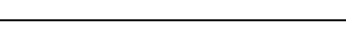


FIRE BARRIER LINETYPES	
—	SMOKE RESISTANT BARRIER
—	30 MINUTE SMOKE BARRIER
—	1 HOUR FIRE/SMOKE BARRIER
—	2 HOUR FIRE/SMOKE BARRIER
—	1 HOUR FIRE BARRIER
—	2 HOUR FIRE BARRIER
—	3 HOUR FIRE BARRIER

ENLARGED PLAN LOCATION SCHEDULE:	
2/PL-116	SEE DRAWING 1/PL-116

- KEYED DEMOLITION NOTES:  
  - REMOVE NOTED WATER FOUNTAIN. EXISTING DOMESTIC COLD WATER SUPPLY PIPING AND SANITARY PIPING CONNECTIONS TO WATER FOUNTAIN SHALL BE MAINTAINED AND UTILIZED FOR CONNECTION TO NEW BOTTLE FILLER. SEE NEW WORK PLAN 1/PL-216 FOR INSTALLATION OF NEW BOTTLE FILLER.
  - EXISTING DOMESTIC COLD WATER PIPING SERVING NOTED WATER FOUNTAIN IS ASBESTOS INSULATED. REFER TO DRAWING PL-030 FOR ACM REMOVALS. SEE SPECIFICATION SECTION 01 35 26 FOR PROPER REMOVAL AND DISPOSAL OF ASBESTOS INSULATION.
  - CONTRACTOR SHALL RELOCATE ANY EXISTING EQUIPMENT ON NOTED WALL AS REQUIRED FOR INSTALLATION OF NEW SINK. CONTRACTOR SHALL COORDINATE RELOCATION OF EQUIPMENT WITH VA COR. CONTRACTOR SHALL REMEDIATE ALL ASBESTOS WITHIN WORK AREA PRIOR TO START OF WORK. SEE NEW WORK DRAWING 2/PL-216 FOR LOCATION OF NEW SINK AND PL-030 FOR ASSOCIATED ASBESTOS REMOVAL.
- GENERAL NOTES:  
  - PLUMBING DRAWINGS ARE BASED ON OBSERVED AS-BUILT CONDITIONS. NOT ALL PIPING IS ACCESSIBLE. IN CASE WORK IS TO BE COMPLETED WITHIN AN INACCESSIBLE AREA, CONTRACTOR SHALL VERIFY PIPE SIZE, LENGTH, ROUTING, END POINT, AND ORIGIN OF ANY PIPING THAT CONTINUES INTO AN INACCESSIBLE AREA PRIOR TO START OF WORK.
  - ALL DOMESTIC WATER SHALL BE RESTORED TO ORIGINAL CONDITION UPON COMPLETION OF WORKDAY. THIS INCLUDES ALL SHIFTS AND SHUTDOWNS REQUIRED. ALL SHUTDOWNS SHALL BE COORDINATED WITH COR PRIOR TO START OF WORK. CONTRACTOR SHALL PROVIDE SCHEDULE OF ALL SHUTDOWNS AND EXPECTED DOWN TIMES TO COR FOR REVIEW BEFORE INITIATING WORK.
  - CONTRACTOR SHALL REVIEW AND ENSURE ALL WORK IS COMPLETED IN ACCORDANCE WITH THE GENERAL FIRE RATED BARRIER NOTES ON PL-001.

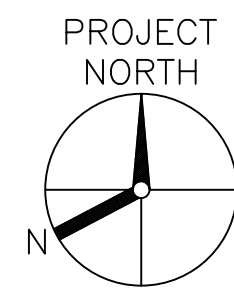




FIRE BARRIER LINETYPES	
	SMOKE RESISTANT BARRIER
	30 MINUTE SMOKE BARRIER
	1 HOUR FIRE/SMOKE BARRIER
	2 HOUR FIRE/SMOKE BARRIER
	1 HOUR FIRE BARRIER
	2 HOUR FIRE BARRIER
	3 HOUR FIRE BARRIER

GENERAL NOTES:	
1.	PLUMBING DRAWINGS ARE BASED ON OBSERVED AS-BUILT CONDITIONS. NOT ALL PIPING IS ACCESSIBLE. IN CASE WORK IS TO BE COMPLETED WITHIN AN INACCESSIBLE AREA, CONTRACTOR SHALL VERIFY PIPE SIZE, LENGTH, ROUTING, END POINT, AND ORIGIN OF ANY PIPING THAT CONTINUES INTO AN INACCESSIBLE AREA PRIOR TO START OF WORK.
2.	ALL DOMESTIC WATER SHALL BE RESTORED TO ORIGINAL CONDITION UPON COMPLETION OF WORKDAY. THIS INCLUDES ALL SHIFTS AND SHUTDOWNS REQUIRED. ALL SHUTDOWNS SHALL BE COORDINATED WITH COR PRIOR TO START OF WORK. CONTRACTOR SHALL PROVIDE SCHEDULE OF ALL SHUTDOWNS AND EXPECTED DOWN TIMES TO COR FOR REVIEW BEFORE INITIATING WORK.
3.	CONTRACTOR SHALL REVIEW AND ENSURE ALL WORK IS COMPLETED IN ACCORDANCE WITH THE GENERAL FIRE RATED BARRIER NOTES ON PL-001.

- 1 REMOVE NOTED WATER FOUNTAIN. EXISTING DOMESTIC COLD WATER SUPPLY PIPING AND SANITARY PIPING CONNECTIONS TO WATER FOUNTAIN SHALL BE MAINTAINED AND UTILIZED FOR CONNECTION TO NEW BOTTLE FILLER. SEE NEW WORK PLAN 1/PL-217 FOR INSTALLATION OF NEW BOTTLE FILLER.
- 2 EXISTING DOMESTIC COLD WATER PIPING SERVING NOTED WATER FOUNTAIN IS ASBESTOS INSULATED. REFER TO DRAWING PL-030 FOR ACM REMOVALS. SEE SPECIFICATION SECTION 01 35 26 FOR PROPER REMOVAL AND DISPOSAL OF ASBESTOS INSULATION.



BUILDING 2 SECOND FLOOR EXISTING  
CONDITIONS/DEMOLITION PLUMBING PLAN

1  
PL-117 SCALE: 1/8"=1'-0"

SCALE: 1/8" = 1'-0"





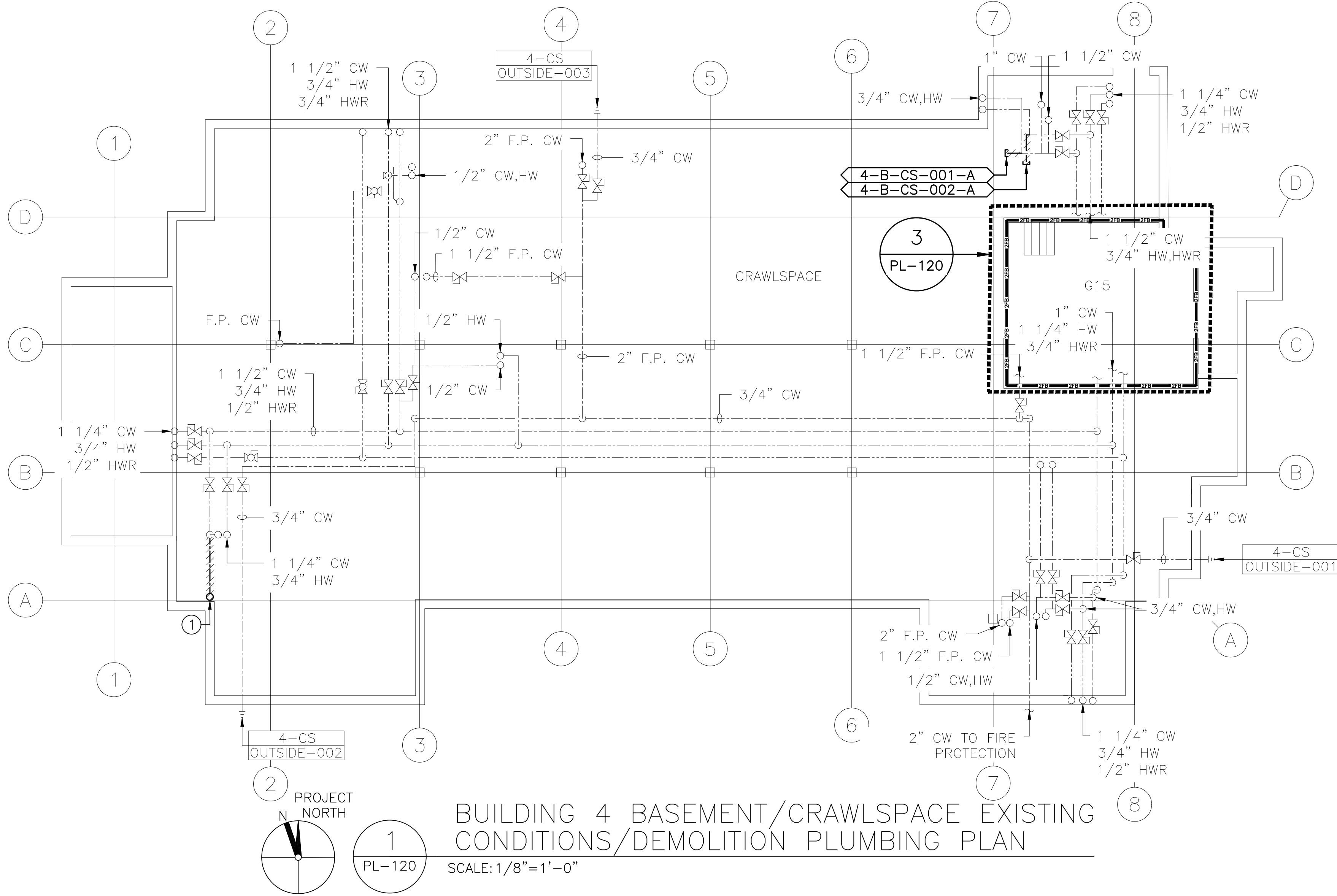


PLUMBING FIELD STUDY KEY SYMBOLS	
TYPE A — PIPE LENGTH GREATER THAN TWICE THE DIAMETER OF THE PIPE SIZE TERMINATING AT CAP, VALVE, OR FITTING.	
TYPE B — PIPE LENGTH GREATER THAN TWICE THE DIAMETER OF THE PIPES TERMINATING AT AN INFREQUENTLY USED PLUMBING FIXTURE.	
TYPE C — PIPE LENGTH GREATER THAN 25 FEET TERMINATING AT A FREQUENTLY USED PLUMBING FIXTURE	
	DEAD LEG TAG
	BACK FLOW PREVENTER TAG
	CROSS-CONNECTION TAG
	REMEDiate DEAD LEG
	NON-INSULATED PIPE REFER TO SCHEDULE

PLUMBING LINE TYPES	
	COLD WATER
	HOT WATER
	HOT WATER RETURN

ENLARGED PLAN PLUMBING LINE TYPES	
	COLD WATER
	HOT WATER
	HOT WATER RETURN

FIRE BARRIER LINETYPES	
	SMOKE RESISTANT BARRIER
	30 MINUTE SMOKE BARRIER
	1 HOUR FIRE/SMOKE BARRIER
	2 HOUR FIRE/SMOKE BARRIER
	1 HOUR FIRE BARRIER
	2 HOUR FIRE BARRIER
	3 HOUR FIRE BARRIER

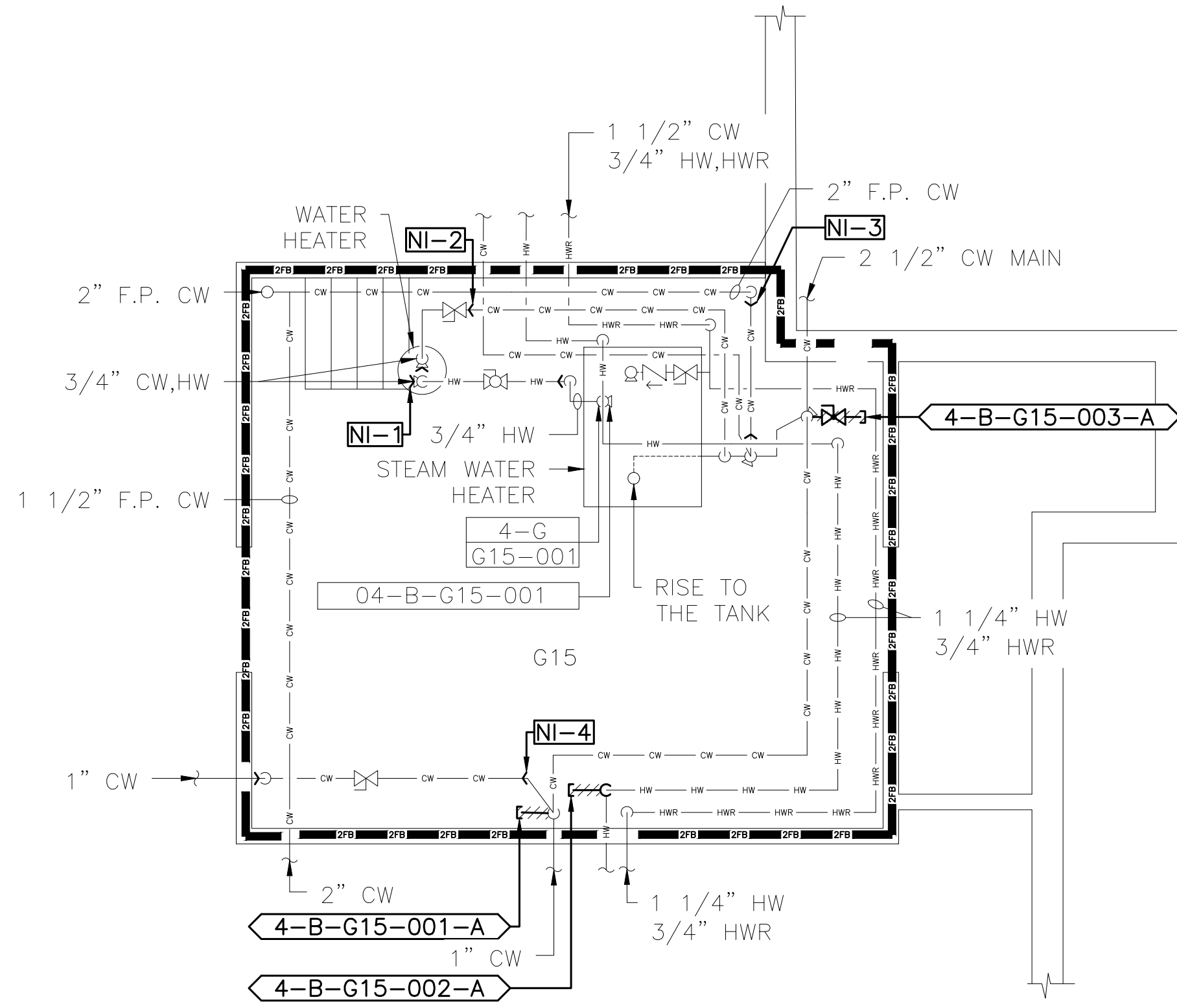
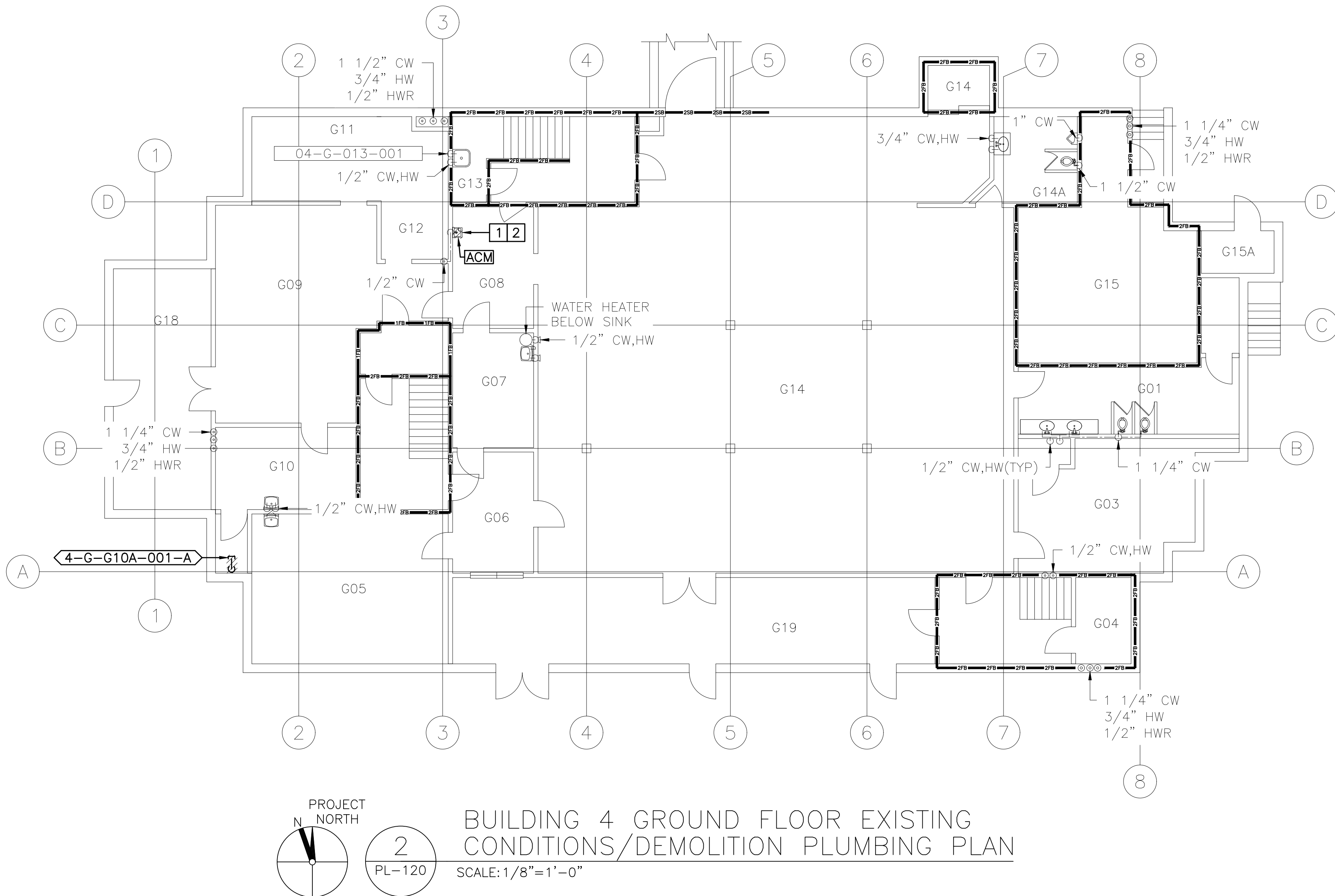


- GENERAL NOTES:
1. PLUMBING DRAWINGS ARE BASED ON OBSERVED AS-BUILT CONDITIONS. NOT ALL PIPING IS ACCESSIBLE. IN CASE WORK IS TO BE COMPLETED WITHIN AN INACCESSIBLE AREA, CONTRACTOR SHALL VERIFY PIPE SIZE, LENGTH, ROUTING, END POINT, AND ORIGIN OF ANY PIPING THAT CONTINUES INTO AN INACCESSIBLE AREA PRIOR TO START OF WORK.
  2. ALL DOMESTIC WATER SHALL BE RESTORED TO ORIGINAL CONDITION UPON COMPLETION OF WORKDAY. THIS INCLUDES ALL SHIFTS AND SHUTDOWNS REQUIRED. ALL SHUTDOWNS SHALL BE COORDINATED WITH COR PRIOR TO START OF WORK. CONTRACTOR SHALL PROVIDE SCHEDULE OF ALL SHUTDOWNS AND EXPECTED DOWN TIMES TO COR FOR REVIEW BEFORE INITIATING WORK.
  3. CONTRACTOR SHALL REVIEW AND ENSURE ALL WORK IS COMPLETED IN ACCORDANCE WITH THE GENERAL FIRE RATED BARRIER NOTES ON PL-001.

- KEYED NOTES:
- ① DEAD LEG CONTINUES ONTO FIRST FLOOR PLAN. SEE ASSOCIATED FIRST FLOOR PLAN FOR CONTINUATION AND DEAD LEG DESIGNATION.

- KEYED DEMOLITION NOTES:
- ① REMOVE NOTED WATER FOUNTAIN. EXISTING DOMESTIC COLD WATER SUPPLY PIPING AND SANITARY PIPING CONNECTIONS TO WATER FOUNTAIN SHALL BE MAINTAINED AND UTILIZED FOR CONNECTION TO NEW BOTTLE FILLER. SEE NEW WORK PLAN 2/PL-220 FOR INSTALLATION OF NEW BOTTLE FILLER.
  - ② EXISTING DOMESTIC COLD WATER PIPING SERVING NOTED WATER FOUNTAIN IS ASBESTOS INSULATED. REFER TO DRAWING PL-030 FOR ACM REMOVALS. SEE SPECIFICATION SECTION 01 35 26 FOR PROPER REMOVAL AND DISPOSAL OF ASBESTOS INSULATION.

ENLARGED PLAN LOCATION SCHEDULE:	
3/PL-120	SEE DRAWING 1/PL-120



BUILDING 4 BASEMENT ROOM G15 EXISTING CONDITIONS/DEMOLITION ENLARGED PLUMBING PLAN

SCALE: 1/4"=1'-0"

CONSULTANT		ARCHITECT/ENGINEER OF RECORD		STAMP		Office of Construction and Facilities Management		Drawing Title		Phase		Project Title		Project Number	
								BUILDING 4 BASEMENT/CRAWLSPACE AND GROUND FLOOR EXISTING CONDITIONS/DEMOLITION PLUMBING AND ENLARGED PLANS		CONSTRUCTION DOCUMENTS		IMPROVE POTABLE WATER DISTRIBUTION SYSTEM		528A4-16-205	
								Approved: Project Director VA NEW YORK HEALTHCARE SYSTEM				Location 222 RICHMOND AVENUE BATAVIA, NY 14020		Building Number 4	
Revisions:		Date:										Issue Date 06/08/2022		Drawing Number PL-120	
												Checked D.L.E.		Drawn T.W.D.	

**F**

**C**

**F**



SCALE: 1/8"=1'-0"



SCALE: 1/8"=1'-0"

Project Number
528A4-16-205
Building Number
4
Drawing Number
PL-121

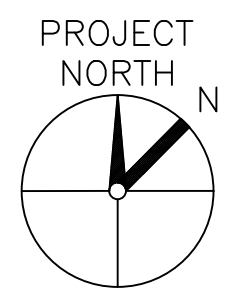
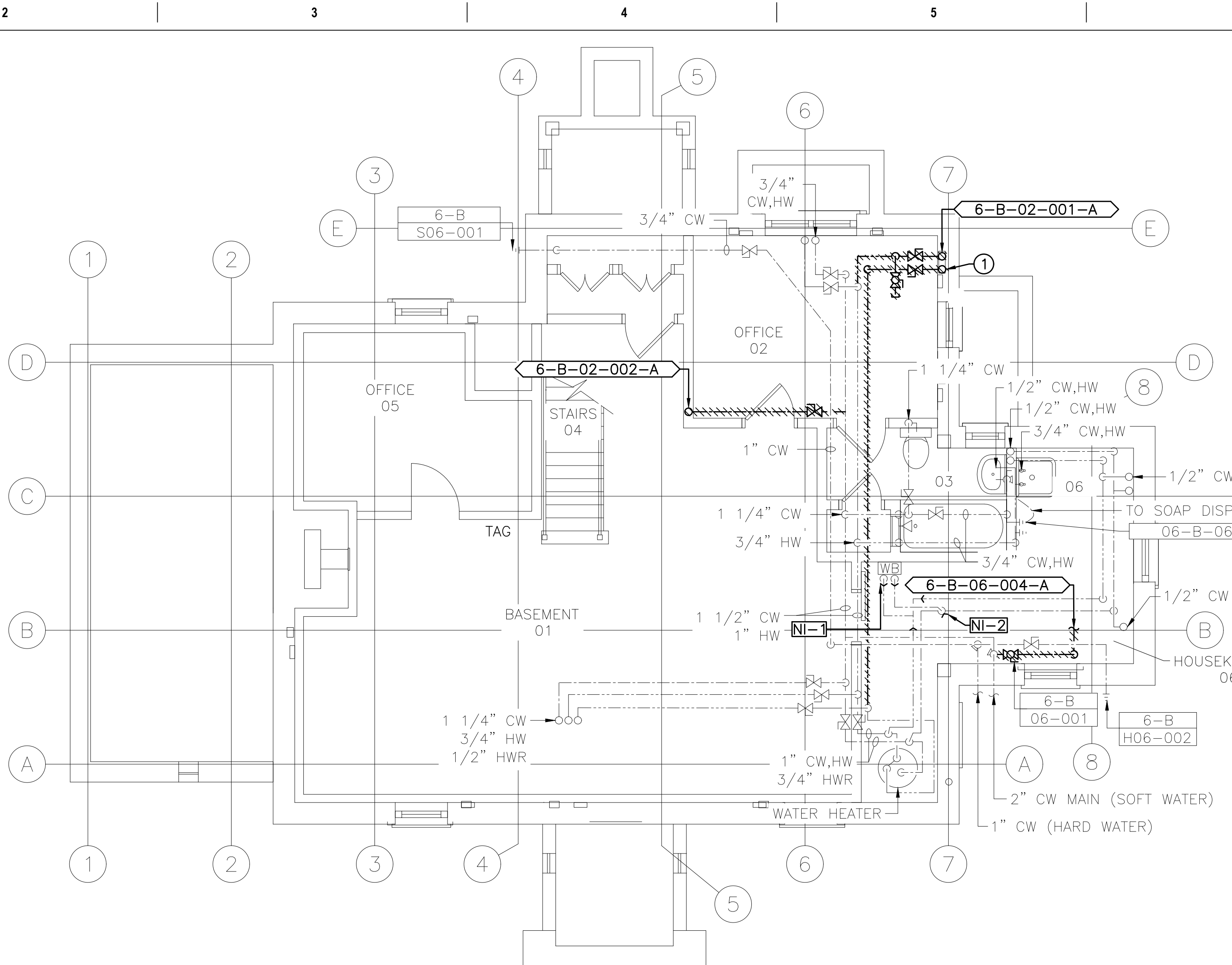


PLUMBING FIELD STUDY KEY SYMBOLS	
TYPE A — PIPE LENGTH GREATER THAN TWICE THE DIAMETER OF THE PIPE SIZE TERMINATING AT CAP, VALVE, OR FITTING.	
TYPE B — PIPE LENGTH GREATER THAN TWICE THE DIAMETER OF THE PIPES TERMINATING AT AN INFREQUENTLY USED PLUMBING FIXTURE.	
TYPE C — PIPE LENGTH GREATER THAN 25 FEET TERMINATING AT A FREQUENTLY USED PLUMBING FIXTURE	
XXX-XX-XXX-XXX	DEAD LEG TAG
XXX-XX-XXX-XXX	BACK FLOW PREVENTER TAG
XX-XX XXX-XXX	CROSS-CONNECTION TAG
////	REMEDIATE DEAD LEG
NI-X	NON-INSULATED PIPE REFER TO SCHEDULE

PLUMBING LINE TYPES	
---	COLD WATER
---	HOT WATER
---	HOT WATER RETURN

- GENERAL NOTES:
1. PLUMBING DRAWINGS ARE BASED ON OBSERVED AS-BUILT CONDITIONS. NOT ALL PIPING IS ACCESSIBLE. IN CASE WORK IS TO BE COMPLETED WITHIN AN INACCESSIBLE AREA, CONTRACTOR SHALL VERIFY PIPE SIZE, LENGTH, ROUTING, END POINT, AND ORIGIN OF ANY PIPING THAT CONTINUES INTO AN INACCESSIBLE AREA PRIOR TO START OF WORK.
  2. ALL DOMESTIC WATER SHALL BE RESTORED TO ORIGINAL CONDITION UPON COMPLETION OF WORKDAY. THIS INCLUDES ALL SHIFTS AND SHUTDOWNS REQUIRED. ALL SHUTDOWNS SHALL BE COORDINATED WITH COR PRIOR TO START OF WORK. CONTRACTOR SHALL PROVIDE SCHEDULE OF ALL SHUTDOWNS AND EXPECTED DOWN TIMES TO COR FOR REVIEW BEFORE INITIATING WORK.
  3. CONTRACTOR SHALL REVIEW AND ENSURE ALL WORK IS COMPLETED IN ACCORDANCE WITH THE GENERAL FIRE RATED BARRIER NOTES ON PL-001.

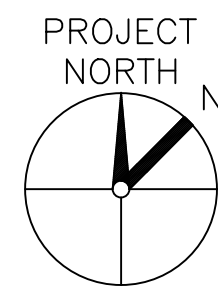
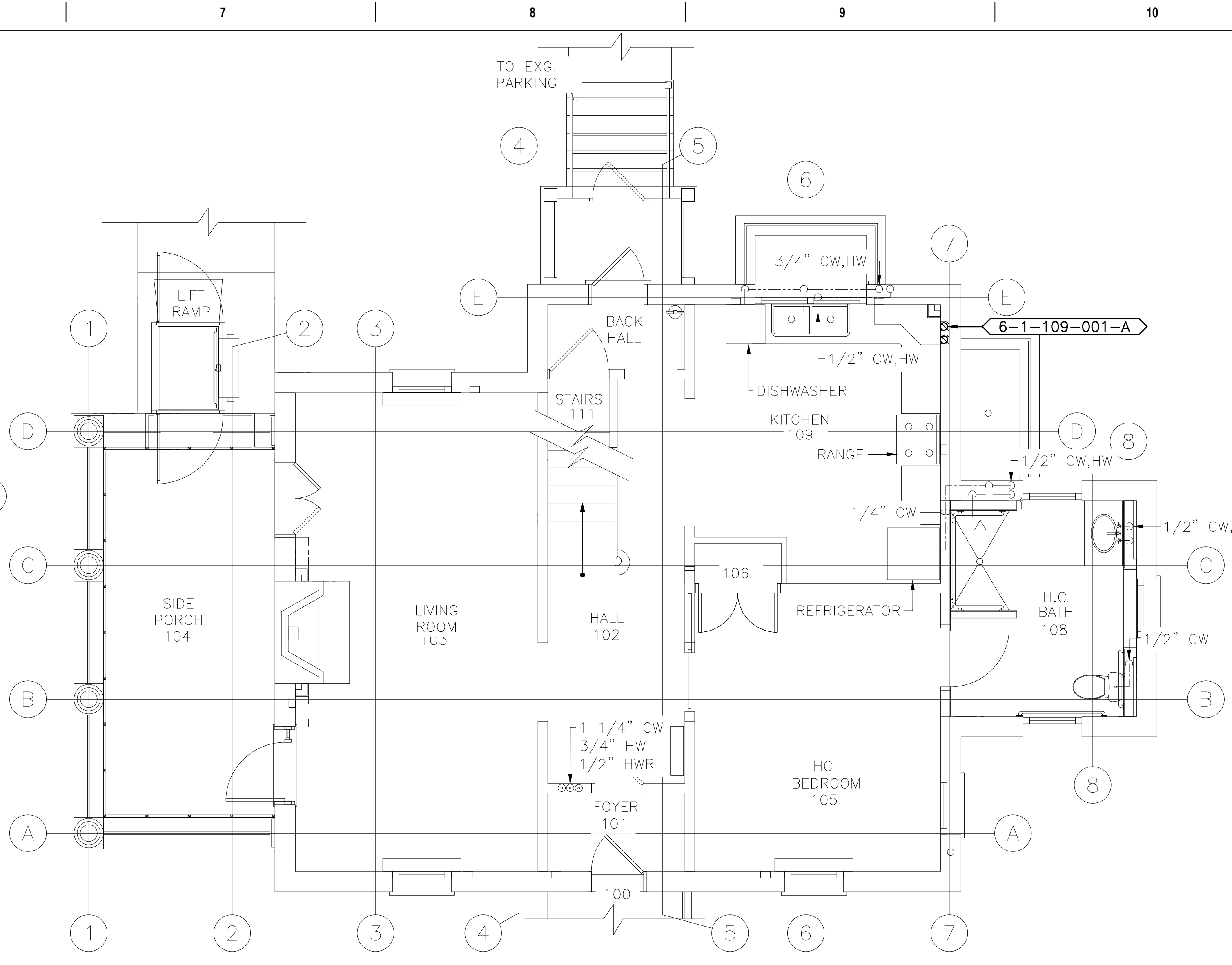
- KEYED NOTE:
- ① DEAD LEG CONTINUES ONTO FIRST FLOOR PLAN. SEE ASSOCIATED PLAN FOR CONTINUATION AND DEAD LEG DESIGNATION.



1  
PL-122

BUILDING 6 BASEMENT EXISTING  
CONDITIONS/DEMOLITION PLUMBING PLAN

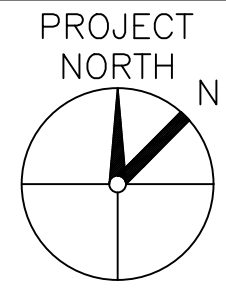
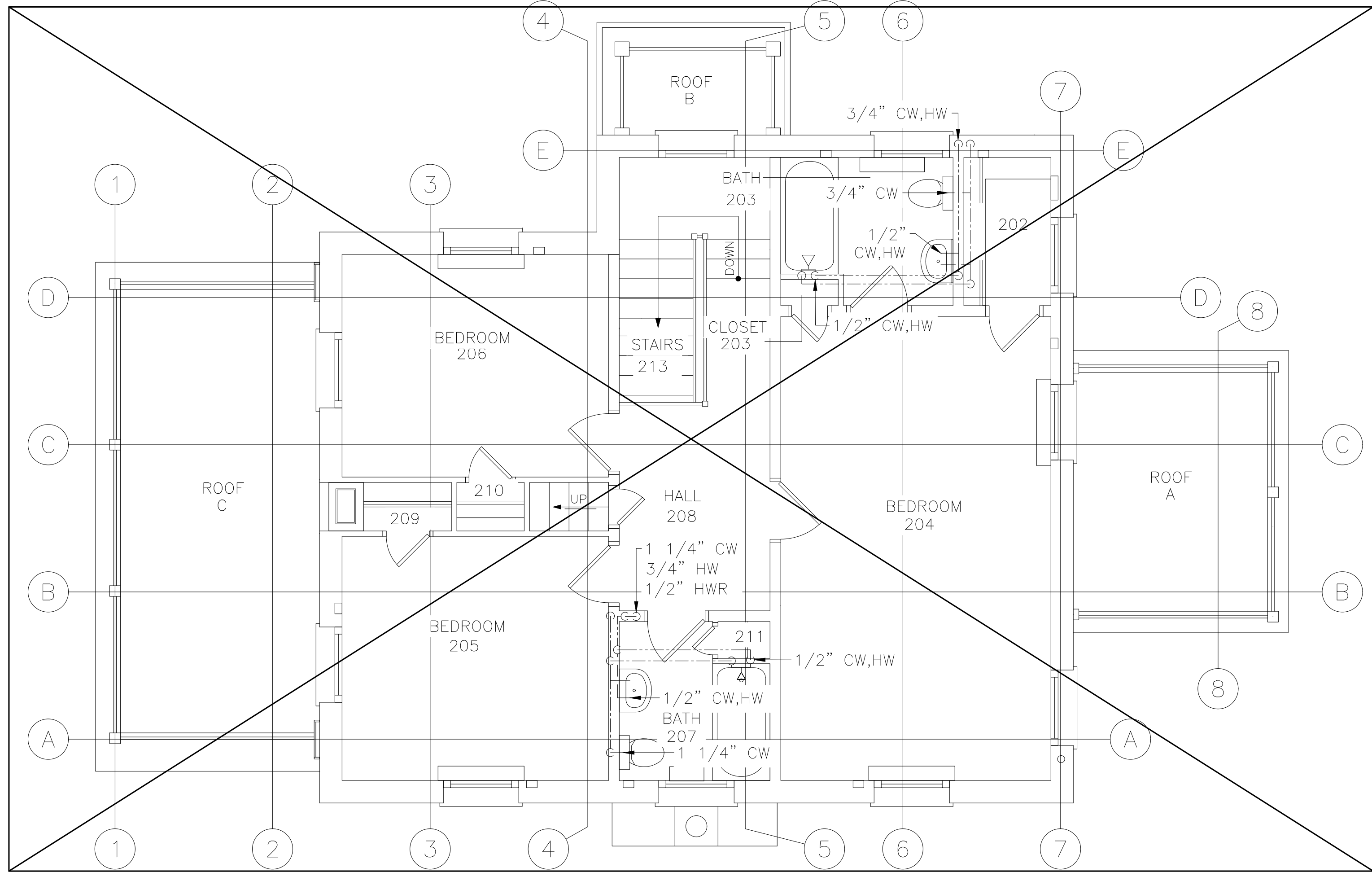
SCALE: 1/4"=1'-0"



2  
PL-122

BUILDING 6 FIRST FLOOR EXISTING  
CONDITIONS/DEMOLITION PLUMBING PLAN

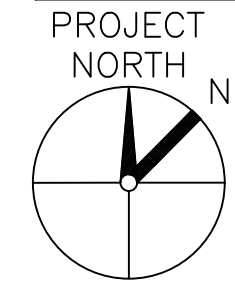
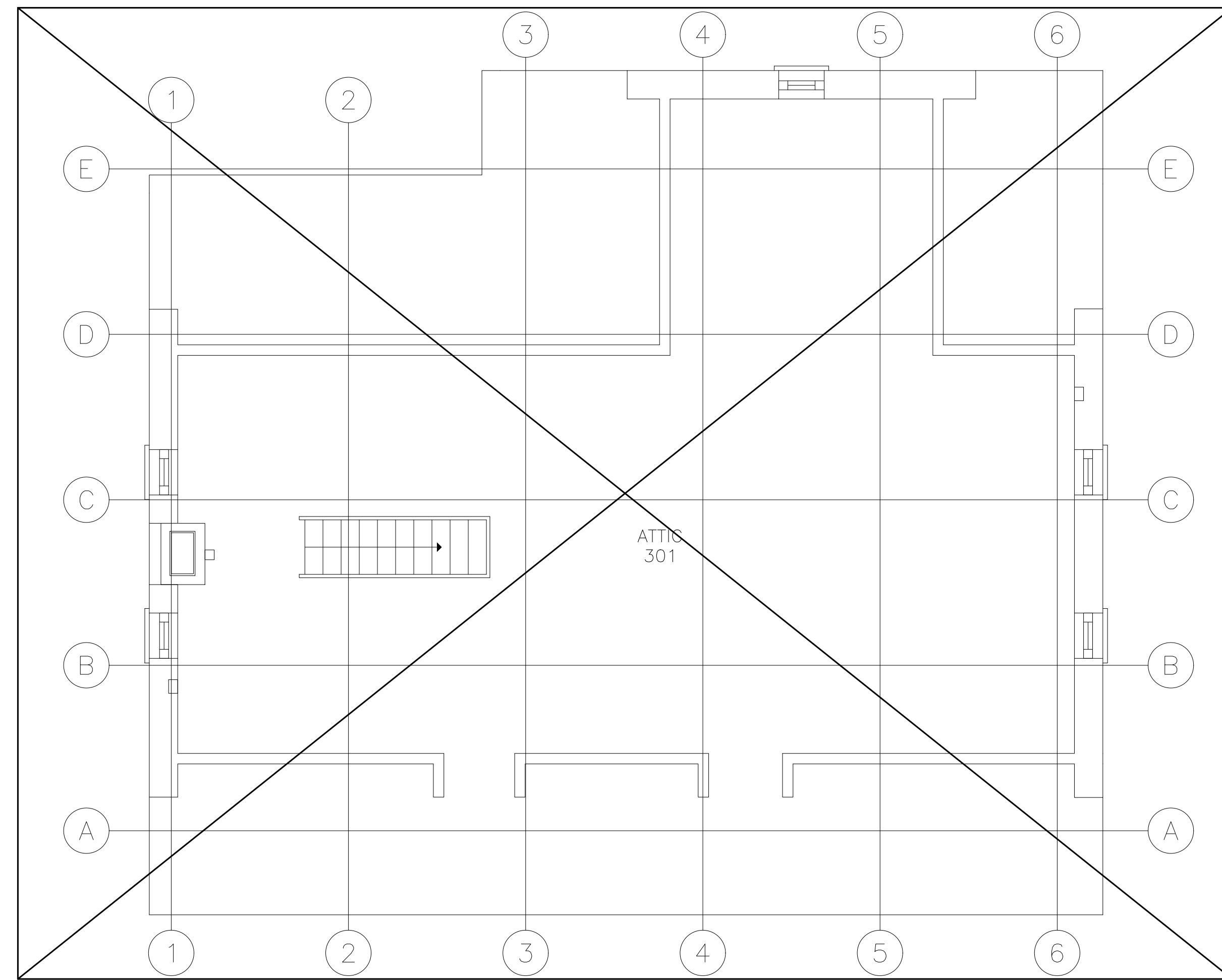
SCALE: 1/4"=1'-0"



3  
PL-122

BUILDING 6 SECOND FLOOR EXISTING  
CONDITIONS/DEMOLITION PLUMBING PLAN

SCALE: 1/4"=1'-0"



4  
PL-122

BUILDING 6 ATTIC EXISTING  
CONDITIONS/DEMOLITION PLUMBING PLAN

SCALE: 1/4"=1'-0"

NOTE: NO DEMO WORK SHALL BE  
COMPLETED WITHIN PLAN 3/PL-122.

NOTE: NO DEMO WORK SHALL BE  
COMPLETED WITHIN PLAN 4/PL-122.

Revisions:	Date:

CONSULTANT

ARCHITECT/ENGINEER OF RECORD



34 BROWN STREET  
HONESDALE, PA 18431  
OFFICE : (570) 253-0846  
FAX : (570) 253-1935  
WWW.NEINFRA.COM

STAMP



Office of  
Construction  
and Facilities  
Management

VA U.S. Department  
of Veterans Affairs

Drawing Title  
BUILDING 6 EXISTING CONDITIONS/  
DEMOLITION PLUMBING PLANS

Approved: Project Director  
VA NEW YORK  
HEALTHCARE SYSTEM

Phase  
CONSTRUCTION DOCUMENTS

Project Title  
IMPROVE POTABLE WATER  
DISTRIBUTION SYSTEM

Location 222 RICHMOND AVENUE  
BATAVIA, NY 14020

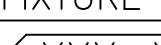
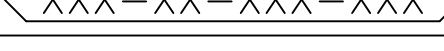
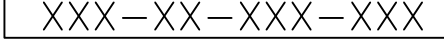
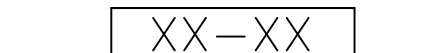
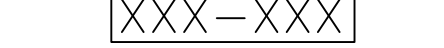
Issue Date  
06/08/2022

Checked  
D.L.E.

Drawn  
T.W.D.

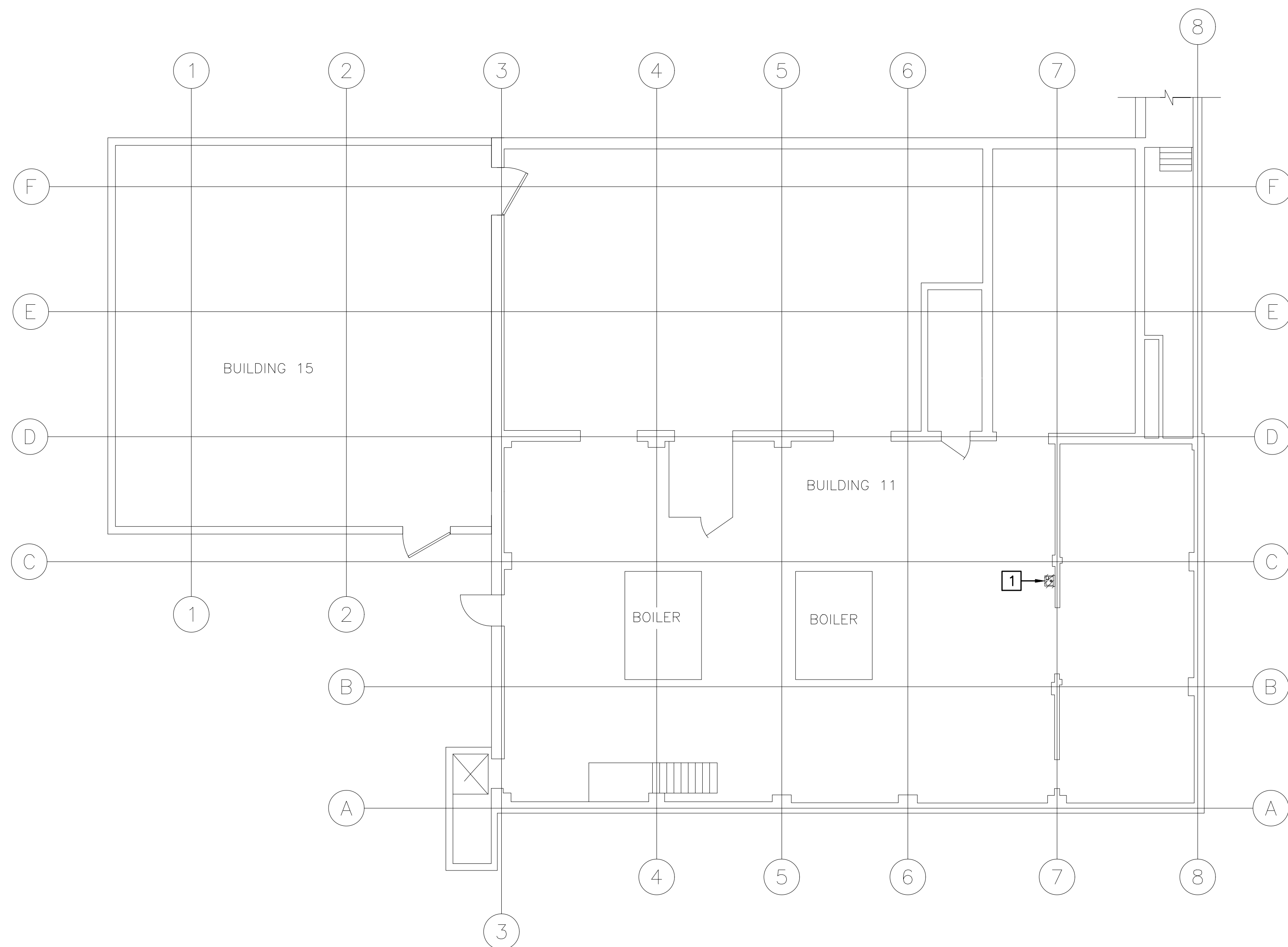
Project Number  
528A4-16-205  
Building Number  
6

Drawing Number  
PL-122

PLUMBING FIELD STUDY KEY SYMBOLS	
<p>TYPE A – PIPE LENGTH GREATER THAN TWICE THE DIAMETER OF THE PIPE SIZE TERMINATING AT CAP, VALVE, OR FITTING.</p> <p>TYPE B – PIPE LENGTH GREATER THAN TWICE THE DIAMETER OF THE PIPES TERMINATING AT AN INFREQUENTLY USED PLUMBING FIXTURE.</p> <p>TYPE C – PIPE LENGTH GREATER THAN 25 FEET TERMINATING AT A FREQUENTLY USED PLUMBING FIXTURE.</p>	
	DEAD LEG TAG
	BACK FLOW PREVENTER TAG
	CROSS-CONNECTION TAG
	REMIEDIATE DEAD LEG
	NON-INSULATED PIPE REFER TO SCHEDULE

PLUMBING LINE TYPES	
-----	COLD WATER
-----	HOT WATER
-----	HOT WATER RETURN

FIRE BARRIER LINETYPES	
	SMOKE RESISTANT BARRIER
	30 MINUTE SMOKE BARRIER
	1 HOUR FIRE/SMOKE BARRIER
	2 HOUR FIRE/SMOKE BARRIER
	1 HOUR FIRE BARRIER
	2 HOUR FIRE BARRIER
	3 HOUR FIRE BARRIER



A compass rose with a circle divided into four quadrants by a vertical and horizontal line. The top quadrant is labeled "PROJECT NORTH" and contains a thick black arrow pointing towards the top. The left quadrant is labeled "N" and contains a thick black arrow pointing towards the left.

1  
PL-123

BUILDING 11 GROUND FLOOR  
EXISTING PLUMBING/DEMOLITION PLUMBING PLAN

SCALE: 1/8"=1'-0'

GENERAL NOTES:

1. PLUMBING DRAWINGS ARE BASED ON OBSERVED AS-BUILT CONDITIONS. NOT ALL PIPING IS ACCESSIBLE. IN CASE WORK IS TO BE COMPLETED WITHIN AN INACCESSIBLE AREA, CONTRACTOR SHALL VERIFY PIPE SIZE, LENGTH, ROUTING, END POINT, AND ORIGIN OF ANY PIPING THAT CONTINUES INTO AN INACCESSIBLE AREA PRIOR TO START OF WORK.



KEYED DEMOLITION NOTES:

1 REMOVE NOTED WATER FOUNTAIN. EXISTING DOMESTIC COLD WATER SUPPLY PIPING AND SANITARY PIPING CONNECTIONS TO WATER FOUNTAIN SHALL BE MAINTAINED AND UTILIZED FOR CONNECTION TO NEW WATER BOTTLE FILLER. SEE NEW WORK PLAN 1/PL-223 FOR INSTALLATION OF NEW WATER BOTTLE FILLER.

6/14/2009 12:39:03 PM

File Path

VA FORM 08-6231

		CONSULTANT	<div><div>34 BROWN STREET HONESDALE, PA 18431  OFFICE : (570) 253-0846 FAX : (570) 253-1935 WWW.NEINFRA.COM</div></div>	<div><div>STATE OF NEW YORK PROFESSIONAL ENGINEER 09003 D. E. S. A.</div></div>	<div>Office of Construction and Facilities Management</div> <div>VAU.S. Department of Veterans Affairs</div>	Drawing Title	Project Title	Phase	Drawing Title	Project Title	Project Number
	BUILDING 11 GROUND FLOOR EXISTING CONDITIONS/DEMOLITION PLUMBING PLAN					CONSTRUCTION DOCUMENTS	IMPROVE POTABLE WATER DISTRIBUTION SYSTEM	528A4-16-205			
	Approved: Project Director										
	VA NEW YORK HEALTHCARE SYSTEM						Location 222 RICHMOND AVENUE BATAVIA, NY 14020	Building Number 11			
							Issue Date 06/08/2022	Checked D.L.E.	Drawn F.R.O.	PL-123	
Revisions:	Date:										

PLUMBING FIELD STUDY KEY SYMBOLS	
TYPE A — PIPE LENGTH GREATER THAN TWICE THE DIAMETER OF THE PIPE SIZE TERMINATING AT CAP, VALVE, OR FITTING.	
TYPE B — PIPE LENGTH GREATER THAN TWICE THE DIAMETER OF THE PIPES TERMINATING AT AN INFREQUENTLY USED PLUMBING FIXTURE.	
TYPE C — PIPE LENGTH GREATER THAN 25 FEET TERMINATING AT A FREQUENTLY USED PLUMBING FIXTURE	
	DEAD LEG TAG
	BACK FLOW PREVENTER TAG
	CROSS-CONNECTION TAG
	REMEDiate DEAD LEG
	NON-INSULATED PIPE REFER TO SCHEDULE

PLUMBING LINE TYPES	
	COLD WATER
	HOT WATER
	HOT WATER RETURN

ENLARGED PLAN PLUMBING LINE TYPES	
	COLD WATER
	HOT WATER
	HOT WATER RETURN

FIRE BARRIER LINETYPES	
	SMOKE RESISTANT BARRIER
	30 MINUTE SMOKE BARRIER
	1 HOUR FIRE/SMOKE BARRIER
	2 HOUR FIRE/SMOKE BARRIER
	1 HOUR FIRE BARRIER
	2 HOUR FIRE BARRIER
	3 HOUR FIRE BARRIER

KEYED DEMOLITION NOTES:

- 1 REMOVE DIGITAL MIXING VALVE. PIPING CONNECTIONS TO MIXING VALVE SHALL BE MAINTAINED AND MODIFIED AS REQUIRED FOR INSTALLATION OF NEW MIXING VALVE. SEE NEW WORK PLAN 2/PL-224 FOR INSTALLATION OF NEW DIGITAL MIXING VALVE.

GENERAL NOTES:

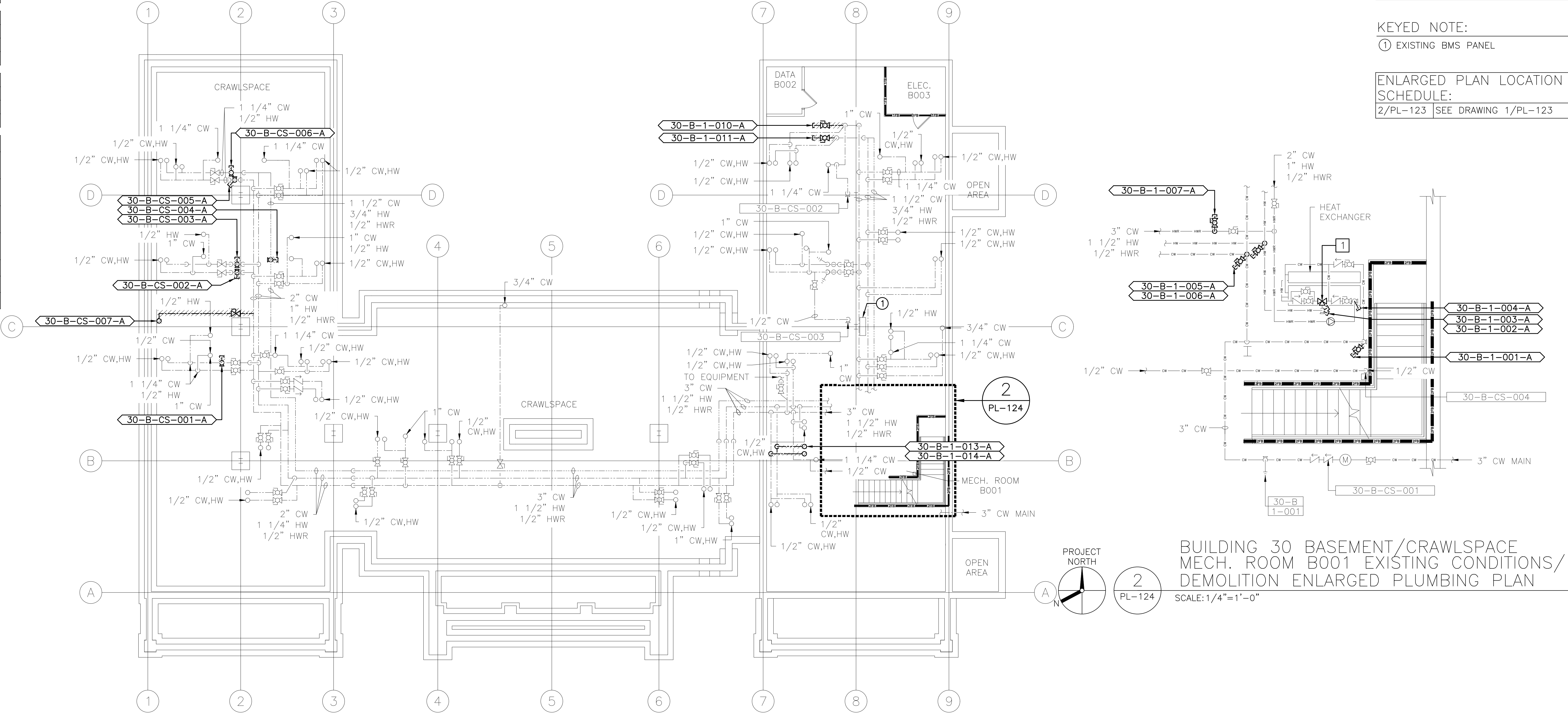
1. PLUMBING DRAWINGS ARE BASED ON OBSERVED AS-BUILT CONDITIONS. NOT ALL PIPING IS ACCESSIBLE. IN CASE WORK IS TO BE COMPLETED WITHIN AN INACCESSIBLE AREA, CONTRACTOR SHALL VERIFY PIPE SIZE, LENGTH, ROUTING, END POINT, AND ORIGIN OF ANY PIPING THAT CONTINUES INTO AN INACCESSIBLE AREA PRIOR TO START OF WORK.
2. ALL DOMESTIC WATER SHALL BE RESTORED TO ORIGINAL CONDITION UPON COMPLETION OF WORKDAY. THIS INCLUDES ALL SHIFTS AND SHUTDOWNS REQUIRED. ALL SHUTDOWNS SHALL BE COORDINATED WITH COR PRIOR TO START OF WORK. CONTRACTOR SHALL PROVIDE SCHEDULE OF ALL SHUTDOWNS AND EXPECTED DOWN TIMES TO COR FOR REVIEW BEFORE INITIATING WORK.
3. CONTRACTOR SHALL REVIEW AND ENSURE ALL WORK IS COMPLETED IN ACCORDANCE WITH THE GENERAL FIRE RATED BARRIER NOTES ON PL-001.

KEYED NOTE:

- 1 EXISTING BMS PANEL

ENLARGED PLAN LOCATION SCHEDULE:

2/PL-123 SEE DRAWING 1/PL-123



BUILDING 30 BASEMENT/CRAWLSPACE MECH. ROOM B001 EXISTING CONDITIONS/DEMOLITION ENLARGED PLUMBING PLAN

SCALE: 1/4"=1'-0"

BUILDING 30 BASEMENT/CRAWLSPACE EXISTING PLUMBING/DEMOLITION PLUMBING PLAN

SCALE: 1/8"=1'-0"

6/14/2008 12:36:03 PM

F

CONSULTANT		ARCHITECT/ENGINEER OF RECORD		STAMP		Office of Construction and Facilities Management		Drawing Title		Phase		Project Title		Project Number	
								BUILDING 30 BASEMENT/CRAWLSPACE EXISTING CONDITIONS/DEMOLITION PLUMBING AND ENLARGED PLAN		CONSTRUCTION DOCUMENTS		IMPROVE POTABLE WATER DISTRIBUTION SYSTEM		528A4-16-205	
								Approved: Project Director				Location		Building Number	
								VA NEW YORK HEALTHCARE SYSTEM				222 RICHMOND AVENUE BATAVIA, NY 14020		30	
Revisions:		Date:										Issue Date		Checked	
												06/08/2022		D.L.E.	
														Drawn	
														F.R.O.	
														PL-124	