



Catalog #: _____ Project: _____

Prepared By: _____ Date: _____ Type: _____

Traditional Wall Light Extra Large (TXWP)

Wall Light

**FOR INFORMATIONAL PURPOSES ONLY!**

OVERVIEW

| | |
|----------------------|---------------|
| Lumen Package | 7,000 -13,000 |
| Wattage Range | 56 - 115 |
| Efficacy Range (LPW) | 108 - 124 |
| Weight lbs (kg) | 15 (6.8) |

QUICK LINKS

[Ordering Guide](#)[Performance](#)[Photometrics](#)[Dimensions](#)

FEATURES & SPECIFICATIONS

Construction

- Rugged traditional aluminum die cast housing provides proven environmental protection for LED modules.
- Traditional fixture design provides a familiar look and standard installation requirements.
- Retaining this look allows the ability to upgrade fixtures gradually, while retaining the same overall fixture appearance throughout a facility.
- Patent pending thermal stacking technology system features a unique internal design that allows for lower operating temperatures which results in a brighter, whiter light, more stable color and longer LED and driver life.
- LEDs manufactured for the TXWP series utilize Epoxy Guard conformal coating which reduces the chance of board corrosion.
- Weight: 15 lbs in carton.

Optical System

- Tempered glass lens.
- Lens assembly is designed to provide high efficiency and to target the light where needed to satisfy outdoor lighting requirements.
- Positioning of the LEDs result in the light being directed to desired locations eliminating glare and offensive light.

- Available in 5000K, 4000K and 3000K color temperatures per ANSI C78.377.
- Minimum CRI of 80.

Electrical

- High-performance driver features overvoltage, under-voltage, short-circuit and over temperature protection.
- 0-10V dimming (10% - 100%) standard.
- Standard Universal Voltage (120-277 VAC) Input 50/60 Hz or optional High Voltage (347-480 Vac)
- Total harmonic distortion: <20%
- Operating temperature: -40°C to +40°C (-40°F to +104°F).
- Power factor: >0.90
- Components are fully encased in potting material for moisture resistance. Driver complies with FCC standards. Driver and key electronic components can easily be accessed.
- Minimum 4kV surge rating
- Optional 120v-277v integral emergency battery pack is available to meet critical life safety lighting requirements. The 90-minute batteries provide constant power to the LED system, ensuring code compliance. A test switch/indicator button is installed on the housing for ease of maintenance. Provides ~1,500 lumens of emergency illumination.

Controls

- Optional factory installed electronic button photocontrol (apertures for field install).

Installation

- Fixture retains the same knock-out sizes and positions as previous models, reducing wiring costs.

Warranty

- LSI luminaires carry a 5-year limited warranty. Refer to <https://www.lsicorp.com/resources/terms-conditions-warranty/> for more information.
- 1 Year warranty on optional button photocell.
- 1 Year warranty on optional Battery Back Up. Test regularly in accordance with local codes.

Listings

- Listed to UL 1598 and UL 8750.
- CSA Listed.
- Meets Buy American Act requirements.
- RoHS Compliant.
- Suitable for wet locations.
- DesignLights Consortium® (DLC) qualified product. Not all versions of this product may be DLC qualified. Please check the DLC Qualified Products List at www.designlights.org/QPL to confirm which versions qualify.





Type: _____

Traditional Wall Extra Large (TXWP)

ORDERING GUIDE

[Back to Quick Links](#)TYPICAL ORDER EXAMPLE: **TXWP 10L UNV 40 CWBB BZA PCI120**

| Family | Lumen Package* | Voltage | Dimming | Color Temperature | Options | Finish | Controls |
|---|--|---|-----------------------------|--|---|--|--|
| TXWP LED - Traditional Wall Extra Large | 7L - 7,000 Lumens 10 - 10,000 Lumens 13L - 13,000 Lumens | UNV - Universal Voltage (120-277V) HV - 347-480V | DIM - Dim to 10% (0-10V) | 50 - 5,000K CCT - 80 CRI 40 - 4,000K CCT - 80 CRI 30 - 3,000K CCT - 80 CRI | CWBB - Cold Weather Battery Backup (120-277V Only) | BZA - Bronze BLK - Black SLV - Silver WHT - White | PCI120 - 120V Button Photocell PCI208-277 - 208-277V Button Photocell |

PERFORMANCE

| DELIVERED LUMENS | | | | | | | | | | | |
|------------------|-----|------------------|----------|------------|------------------|----------|------------|------------------|----------|------------|---------|
| Lumens | CRI | 3000K | | | 4000K | | | 5000K | | | Wattage |
| | | Delivered Lumens | Efficacy | BUG Rating | Delivered Lumens | Efficacy | BUG Rating | Delivered Lumens | Efficacy | BUG Rating | |
| 7L | 80 | 6046 | 108 | B1-U4-G4 | 6933 | 124 | B1-U4-G4 | 6933 | 124 | B1-U4-G4 | 56 |
| 10L | | 9958 | 122 | B1-U5-G5 | 9958 | 122 | B1-U5-G5 | 9958 | 122 | B1-U5-G5 | 82 |
| 13L | | 12510 | 108 | B2-U5-G5 | 13170 | 114 | B2-U5-G5 | 13170 | 114 | B2-U5-G5 | 115 |

| ELECTRICAL DATA* | | | | | | |
|------------------|------|------|------|------|------|------|
| Lumens | 120V | 208V | 240V | 277V | 347V | 480V |
| 7L | 0.47 | 0.27 | 0.23 | 0.20 | 0.16 | 0.12 |
| 10L | 0.68 | 0.39 | 0.34 | 0.30 | 0.24 | 0.17 |
| 13L | 0.96 | 0.56 | 0.48 | 0.42 | 0.33 | 0.24 |

*Electrical data at 25C (77F). Actual wattage may differ by +/-10%.

| ENERGY SAVINGS | | | | | |
|----------------|-------------|----------------|--------------------|-------------|----------------|
| LED | | HID | | | |
| Wattage | Annual Cost | Source Wattage | Total Wattage Used | Annual Cost | Annual Savings |
| 56 | \$24 | 250 | 285 | \$150 | \$126 |
| 82 | \$35 | 250 | 285 | \$150 | \$115 |
| 82 | \$35 | 400 | 458 | \$226 | \$191 |
| 117 | \$50 | 400 | 458 | \$226 | \$176 |





Traditional Wall Extra Large (TXWP)

PHOTOMETRICS

[Back to Quick Links](#)

Luminaire photometry has been conducted by an accredited laboratory in accordance with IESNA LM-79. As specified by IESNA LM-79 the entire luminaire is tested as the source resulting in a luminaire efficiency of 100%.

TXWP 13L UNV 40

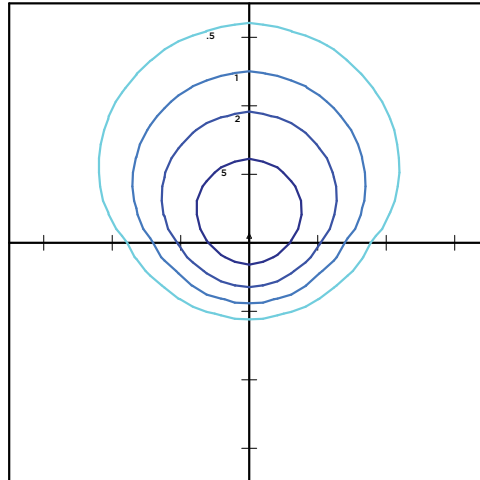
LUMINAIRE DATA

| Type 4 Distribution | |
|---------------------|----------------------|
| Description | 4000 Kelvin, 70 CRI |
| Delivered Lumens | 13,171 |
| Watts | 115 |
| Efficacy | 115 |
| IES Type | Type IV - Very Short |
| BUG Rating | B2-U5-G5 |

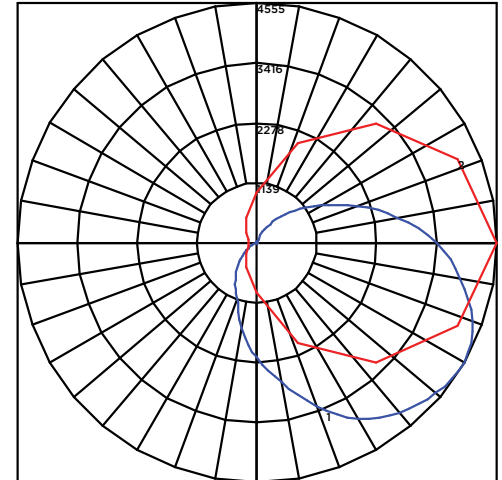
Zonal Lumen Summary

| Zone | Lumens | %Luminaire |
|--------------------|--------|------------|
| Low (0-30)° | 1751 | 13% |
| Medium (30-60)° | 4343 | 33% |
| High (60-80)° | 3054 | 23% |
| Very High (80-90)° | 1246 | 9% |
| Uplight (90-180)° | 2778 | 21% |
| Total Flux | 13171 | 100% |

ISO FOOTCANDLE



POLAR CURVE



15' Mounting Height/15' Grid Spacing

■ 5 FC ■ 2 FC ■ 1 FC ■ .5 FC

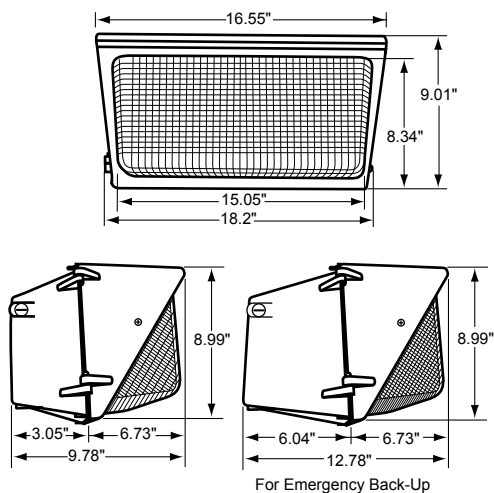




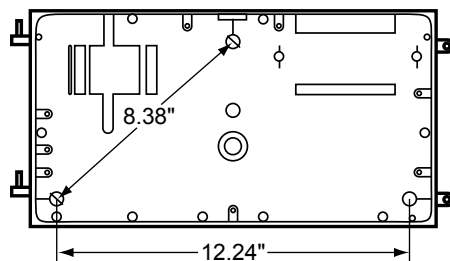
Traditional Wall Extra Large (TXWP)

PRODUCT DIMENSIONS

[Back to Quick Links](#)



Mounting Detail



Catalog # :

Project :

Prepared By :

Date :



WCP Series LED Walkway Canopy



The LSI WCP LED Walkway Canopy Series is designed to optimize LED life and light output. Housing is hinged for quick and easy mounting and entrance. Using high brightness, high LED count technology, more usable light output is produced while eliminating glare.

Features & Specifications

Optical System

- The high transmission lens, with 91% efficiency, is high impact, scratch resistant acrylic and protects the LEDs. At the same time, it delivers improved visual comfort by eliminating any glare and providing a wider smoother and more uniform light output.
- Lens assembly is designed to provide high efficiency and to target the light where needed to satisfy outdoor lighting requirements.
- Positioning of the LEDs result in the light being directed to desired locations eliminating glare.
- 3000K | 4000K | 5000K color temperatures.
- Minimum CRI of 80.
- L70 Calculated Life: >200k Hours

Electrical

- High-performance driver features over-voltage, under voltage, short-circuit and over temperature protection.
- 0-10 volt dimming (10% - 100%) standard.
- Standard Universal Voltage (120-277 Vac) Input 50/60 Hz
- Total harmonic distortion: <20%
- Power factor: >.85
- Driver Off-State Power is 0 watts.
- Components are fully encased in potting material for moisture resistance. Driver complies with FCC standards. Driver and key electronic components can easily be accessed.
- Minimum 4kV surge rating

Controls

Wireless Controls System

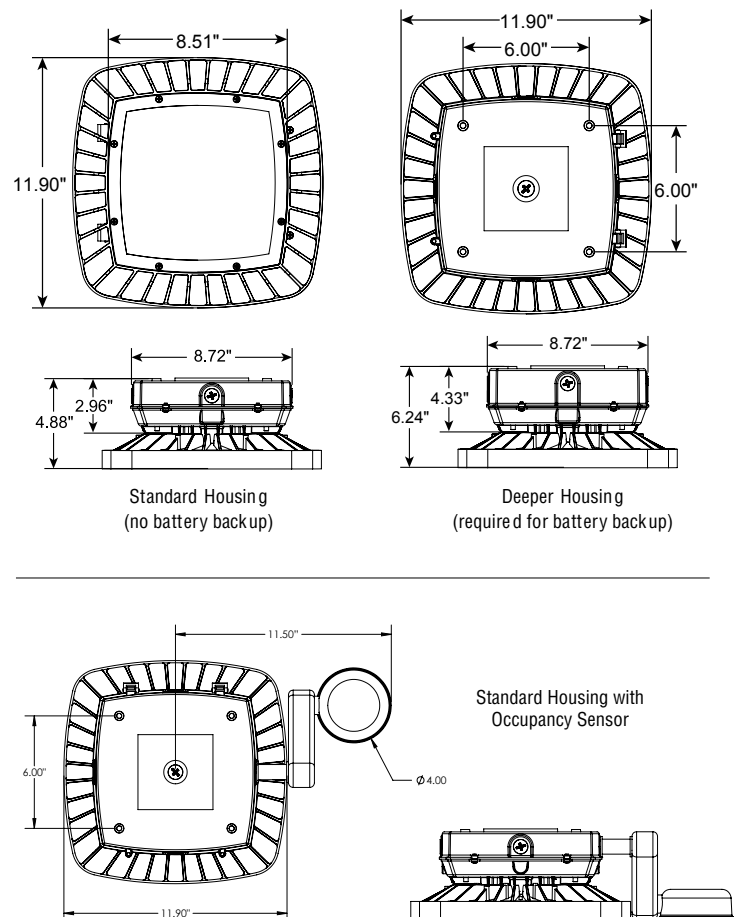
To make Airlink ready, order one of the following options:

- The integrated Wireless Lighting Controller: ALSC (see ordering guide) as the controls option, or
- Integrated Wireless Controller option (above) with integrated motion sensor: ALSCS (ordering guide for mounting heights)

For more information on our AirLink products, visit our website:
www.lsi-airlink.com/airlink-synapse/



Dimensions



*The majority of LSI Lighting Products are assembled in USA facilities by an American Workforce utilizing both Domestic and Foreign components. Meets Buy American requirements within the ARRA.



WCP Series LED Walkway Canopy

Features & Specifications (Cont.)

Stand Alone Controls

- The passive infrared motion sensor activates switching of luminaire light levels.

Construction

- Rugged aluminum die cast housing provides proven environmental protection for LED modules.
- Designed for commercial and industrial applications.
- Patent pending thermal stacking technology features a unique internal design that allows for lower operating temperatures which results in a brighter, whiter light, more stable color and longer LED and driver life.
- LSI LEDs provide higher lumen output, greater energy efficiency and more reliable fixture performance.
- LEDs manufactured for the WCP series utilize Epoxy Guard conformal coating which reduces the chance of board corrosion.
- Weight: 10.0 lbs in carton.

Warranty

- LSI LED Fixtures carry a 5-year warranty.

Listings

- CSA listed to UL 1598 and UL 8750.
- Luminaire is certified to UL/cUL Standards for Wet Locations.
- IDA Listed (3000K or warmer CCT)
- DesignLights Consortium® (DLC) qualified product. Not all versions of this product DLC qualified. Check the DLC Qualified Products List at www.designlights.org/QPL to confirm which versions are qualified.

Installation:

- Apertures for continuous wiring.
- Housing is hinged for quick and easy mounting and entrance.
- Can be pendant mounted using 1/2" threaded conduit fitting (by others).

Performance

| Lumens | 3000K | | 4000K | | 5000K | | Wattage |
|--------|------------------|----------|------------------|----------|------------------|----------|---------|
| | Delivered Lumens | Efficacy | Delivered Lumens | Efficacy | Delivered Lumens | Efficacy | |
| 3L | 3363 | 137.21 | 3363 | 137.21 | 3492 | 142.37 | 25 |
| 5L | 5452 | 134.60 | 5452 | 134.60 | 5626 | 135.25 | 40 |
| 7L | 7680 | 127.30 | 7680 | 127.30 | 7788 | 129.11 | 60 |
| 10L | 9691 | 121.78 | 9691 | 121.78 | 9821 | 121.11 | 80 |

Energy Savings

| LED | | HID | | | |
|---------|-------------|----------------|--------------------|-------------|----------------|
| Wattage | Annual Cost | Source Wattage | Total Wattage Used | Annual Cost | Annual Savings |
| 25 | \$11 | 50 | 72 | \$52 | \$41 |
| | | 70 | 90 | \$59 | \$48 |
| | | 100 | 129 | \$77 | \$66 |
| 40 | \$18 | 100 | 129 | \$77 | \$59 |
| | | 150 | 185 | \$100 | \$82 |
| | | 175 | 210 | \$112 | \$94 |
| 60 | \$26 | 200 | 232 | \$128 | \$102 |
| | | 250 | 285 | \$150 | \$124 |
| | | 400 | 458 | \$226 | \$200 |
| 80 | \$35 | 200 | 232 | \$128 | \$93 |
| | | 250 | 285 | \$150 | \$115 |
| | | 400 | 458 | \$226 | \$191 |

Luminaire Ordering Guide

TYPICAL ORDER EXAMPLE: **WCP LED 3L DA W UNV DIM 30 BZA**

| Family Prefix | Lumen Package | Lens Type | Distribution | Voltage | Dimming | Color Temp | Color Rendering | Options / Controls | Finishes |
|---------------------------------|---------------------|-----------------------|--------------|--|-----------------------------|------------|----------------------------------|--|-----------------------------|
| WCP LED - Walkway Canopy Series | 3L - 3,000 Lumens | DA - Diffused Acrylic | W - Wide | UNV - Universal (120V-277V) HV - High Voltage (347V-480V) | DIM - Dim to 10% (0 to 10V) | 30 - 3000K | Blank - 80 Color Rendering Index | ALSC - AirLink Synapse Wireless Controller ¹ | BZA - Bronze WHT - White |
| | 5L - 5,000 Lumens | | | | | 40 - 4000K | | OCSUE - Occupancy Sensor white housing 120 - 277V ² | |
| | 7L - 7,000 Lumens | | | | | 50 - 5000K | | OCSHV - Occupancy Sensor white housing 480V ² | |
| | 10L - 10,000 Lumens | | | | | | | EXT- 0-10V Dimming leads extended to housing exterior ² CWBB - Cold Weather Battery Backup -20°C to 50°C(-4°F to 122°F) (requires deeper housing) SP - Surge Protection | |

Footnotes:

- Consult factory for HV with AirLink Synapse Wireless Digital Controller.
- Not compatible with AirLink Wireless Controls.