

BID DEDUCT ALTERNATES
ALTERNATE REDUCT A1: REDUCE LANDSCAPING PLANTINGS AND MATERIALS. REFER TO CHANGES DETAIL ON SHEET U-100A.
ALTERNATE REDUCT A2: REMOVE THE FOUNTAINBUSH FROM THE SITE ACCESS ROADWAY.
ALTERNATE REDUCT A3: REMOVE THE BACK CANYST FROM THE GARDEN PATH.
ALTERNATE REDUCT A4: REMOVE THE GLEBEST OXY FROM THE ROOF PROFILE.
ALTERNATE REDUCT A5: FURTHER REDUCE LANDSCAPING PLANTINGS AND MATERIALS. REFER TO CHANGES DETAIL ON SHEET U-100B.
ALTERNATE REDUCT A6: REMOVE GARY POWER DUCT BANK FROM TRANSFORMER TO HACHULE NORTH OF BUILDING 13. DO NOT INSTALL HACHULE.
ALTERNATE REDUCT A7: REMOVE STREET LIGHTING.

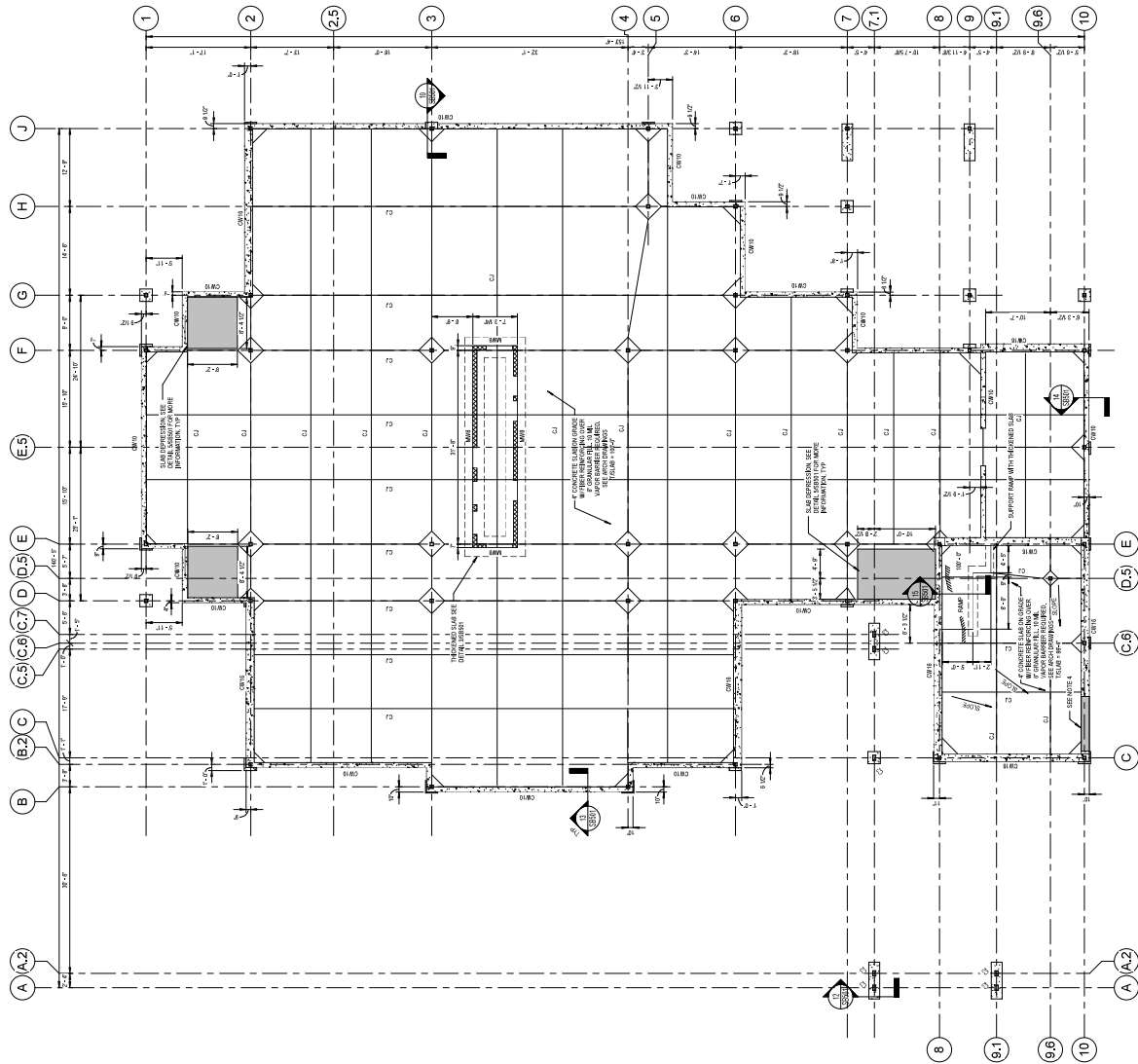
PLANTING SCHEDULE IS COMPREHENSIVE FOR
BID ALTERNATE #5

VA FORM 08-6231

FOUNDATION PLAN

- NOTES:
- 1. SEE GENERAL NOTES FOR FOUNDATION DESIGN.
 - 2. SEE GENERAL NOTES FOR FOUNDATION DESIGN.
 - 3. SEE GENERAL NOTES FOR FOUNDATION DESIGN.
 - 4. SEE GENERAL NOTES FOR FOUNDATION DESIGN.
 - 5. SEE GENERAL NOTES FOR FOUNDATION DESIGN.
 - 6. SEE GENERAL NOTES FOR FOUNDATION DESIGN.
 - 7. SEE GENERAL NOTES FOR FOUNDATION DESIGN.
 - 8. SEE GENERAL NOTES FOR FOUNDATION DESIGN.
 - 9. SEE GENERAL NOTES FOR FOUNDATION DESIGN.
 - 10. SEE GENERAL NOTES FOR FOUNDATION DESIGN.

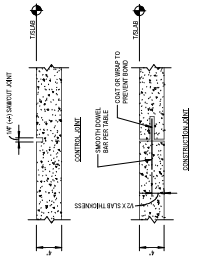
Project Number 550-319		Project Name CONSTRUCT TWO NEW GREEN HOMES 7 & 8		Drawing Number 134 & 135	
Revision Number 134 & 135		Location 1900 E. MAIN ST., DANVILLE, IL 61822		Sheet Number SB101	
Revision Date 04/09/2020		Checked MAV		Drawn ANL	
Project Phase 100% CONSTRUCTION DOCUMENTS		Foundation Plan		Fully Sprinklered	
Office of Construction and Facilities Management		U.S. Department of Veterans Affairs		U.S. Department of Veterans Affairs	
ARCHITECT/ENGINEER OF RECORD JAE GIBSON DESIGN, INC. 1221 North Pennsylvania St. Indianapolis, Indiana 46202 317.360.0388		STAMP T. J. Gibson REGISTERED PROFESSIONAL ENGINEER No. 10000 State of Indiana		CONSULTANT GWA 10411 Beading Street Prospect, Kentucky 40070 502.261.1820	
CONTRACTOR GWA		REVISIONS		REVISIONS	
DATE 04/09/2020		DATE 04/09/2020		DATE 04/09/2020	



SLAB ON GRADE PLAN

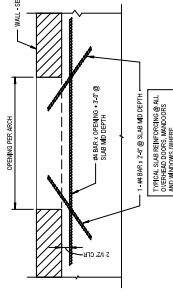
1. REFERENCE ELEVATION: 100'-0" (SEE ELEVATION SHEET FOR DETAILS OF ELEVATIONS)
2. REFERENCE ELEVATION: 100'-0" (SEE ELEVATION SHEET FOR DETAILS OF ELEVATIONS)
3. REFERENCE ELEVATION: 100'-0" (SEE ELEVATION SHEET FOR DETAILS OF ELEVATIONS)
4. REFERENCE ELEVATION: 100'-0" (SEE ELEVATION SHEET FOR DETAILS OF ELEVATIONS)
5. REFERENCE ELEVATION: 100'-0" (SEE ELEVATION SHEET FOR DETAILS OF ELEVATIONS)
6. REFERENCE ELEVATION: 100'-0" (SEE ELEVATION SHEET FOR DETAILS OF ELEVATIONS)
7. REFERENCE ELEVATION: 100'-0" (SEE ELEVATION SHEET FOR DETAILS OF ELEVATIONS)
8. REFERENCE ELEVATION: 100'-0" (SEE ELEVATION SHEET FOR DETAILS OF ELEVATIONS)
9. REFERENCE ELEVATION: 100'-0" (SEE ELEVATION SHEET FOR DETAILS OF ELEVATIONS)
10. REFERENCE ELEVATION: 100'-0" (SEE ELEVATION SHEET FOR DETAILS OF ELEVATIONS)

CONSULTANT		ARCHITECT/ENGINEER OF RECORD		STAMP		Office of Construction and Facilities Management		100% CONSTRUCTION DOCUMENTS		Project Name	
CWA 10411 Beading Street Prospect, Kentucky 40059 502.261.1820		GIBSON DESIGN, INC. 1221 North Pennsylvania St Indianapolis, Indiana 46202 317.260.0388				U.S. Department of Veterans Affairs		CONSTRUCT TWO NEW GREEN HOMES 7 & 8		Project Number	
Revisions										550-319	
Date:										134 & 135	
Drawn:										134 & 135	
Checked:										134 & 135	
Approved:										134 & 135	
Date:										04/09/2020	
Drawn:										MAV	
Checked:										ADK	
Approved:										SB102	

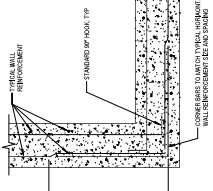


DOWEL SIZE AND SPACING			
SLAB	DOWEL	TOTAL DOWEL	DOWEL SPACING
4	4	24	6
4	4	16	4
4	4	16	4

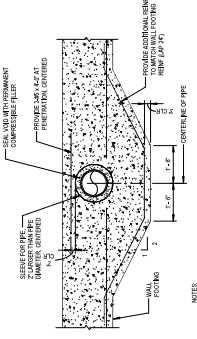
1. TYPICAL SLAB ON GRADE JOINTS
100% JUNE 24, 11-12



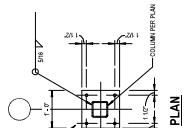
2. ADDITIONAL REINFORCING AT DOORS AND WINDOWS
100% JUNE 24, 11-12



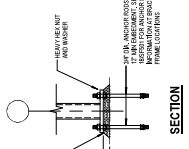
3. TYPICAL WALL CORNER DETAIL
100% JUNE 24, 11-12



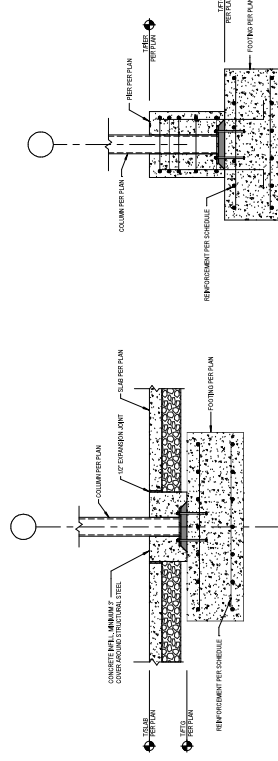
4. TYPICAL FOOTING DETAIL AT PIPE PENETRATION
100% JUNE 24, 11-12



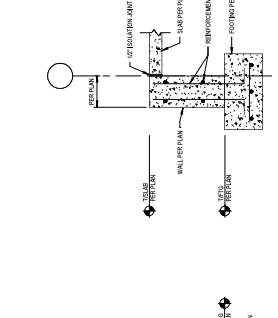
5. TYPICAL BASE PLATE
100% JUNE 24, 11-12



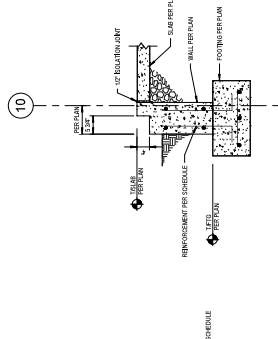
6. SECTION
100% JUNE 24, 11-12



7. FOUNDATION SECTION
100% JUNE 24, 11-12



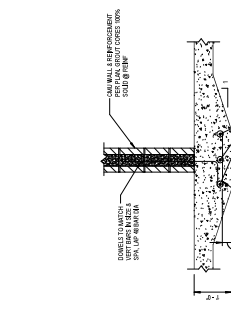
8. SECTION
100% JUNE 24, 11-12



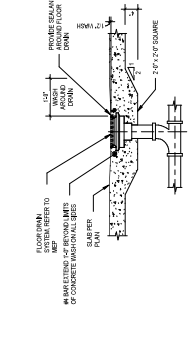
9. FOUNDATION SECTION
100% JUNE 24, 11-12



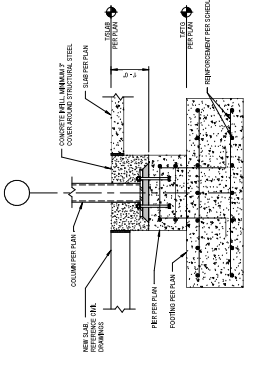
10. FOUNDATION SECTION
100% JUNE 24, 11-12



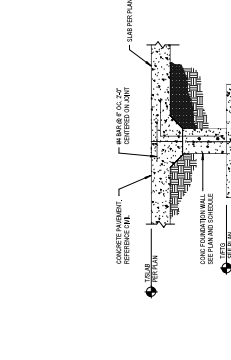
11. TYPICAL THICKENED SLAB AT MASONRY WALL
100% JUNE 24, 11-12



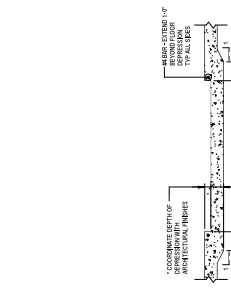
12. TYPICAL SLAB DRAIN
100% JUNE 24, 11-12



13. FOUNDATION SECTION
100% JUNE 24, 11-12



14. TYPICAL WALL AT DOOR OPENING
100% JUNE 24, 11-12



15. TYPICAL DEPRESSED FLOOR SLAB
100% JUNE 24, 11-12

Revisions	DATE

CONSULTANT
CWA
10411 Beading Street
Prospect, Kentucky 40059
502.261.1820

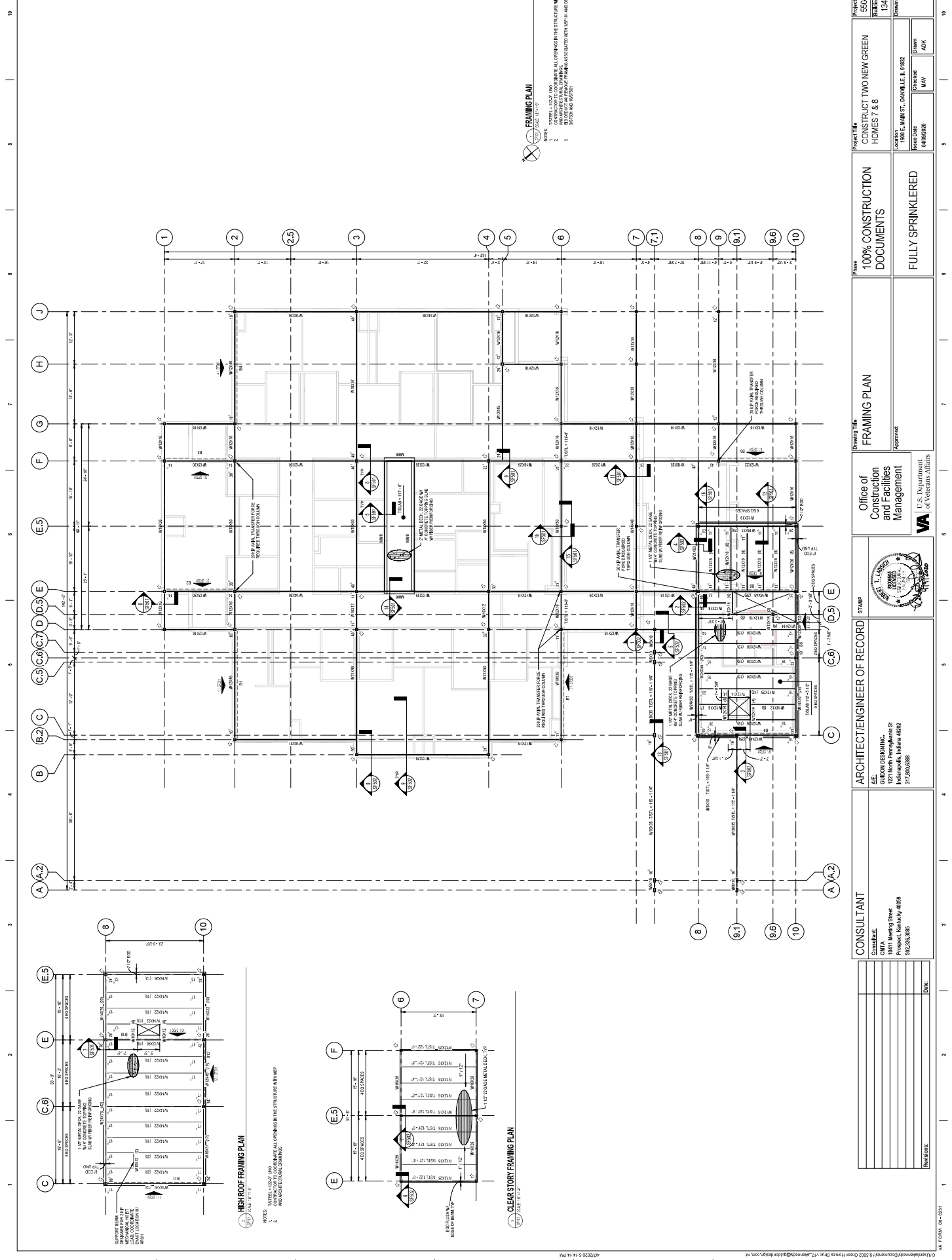
ARCHITECT/ENGINEER OF RECORD
JAE
GURION DESIGN, INC.
1221 North Pennsylvania St
Indianapolis, Indiana 46202
317.360.0388



Office of
Construction
and Facilities
Management
VA U.S. Department
of Veterans Affairs

Drawing No. 100% CONSTRUCTION DOCUMENTS
Project No. CONSTRUCT TWO NEW GREEN HOMES 7 & 8
Location 1906 E. MAIN ST., DANVILLE, IL 61832
Revision No. 04/09/2020
Checked MAY
Drawn ANK

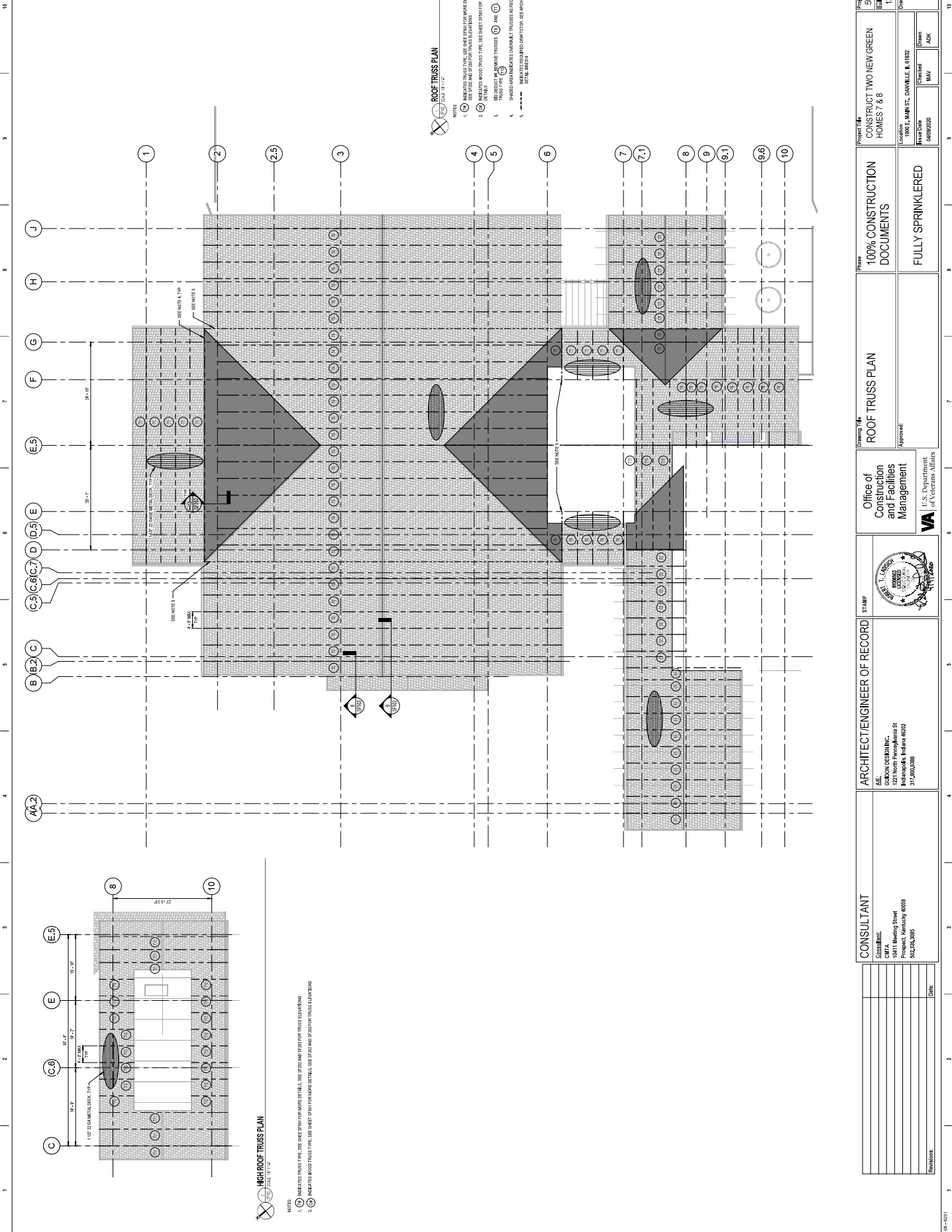
Project Name
550-319
134 & 135
Drawing Number
S8501



FRAMING PLAN
SCALE: 1/4" = 1'-0"

- NOTES:
1. SEE ALL NOTES ON SHEET 1500-319 FOR GENERAL NOTES AND DETAILS.
 2. CONSULT WITH ARCHITECT FOR ALL OPENINGS IN THE STRUCTURE WITH MAP.
 3. REDUCED AS SHOWN. FRAMING ASSIGNED TO THE SHOWN AND DETAILS.

CONSULTANT		ARCHITECT/ENGINEER OF RECORD		STAMP		Office of Construction and Facilities Management		100% CONSTRUCTION DOCUMENTS		Project M:	
CWA 10411 Beeding Street Prospect, Kentucky 40059 502.261.1800		JAE GURON DESIGN, INC. 1221 North Pennsylvania St. Indianapolis, Indiana 46202 317.260.0388						CONSTRUCT TWO NEW GREEN HOMES 7 & 8		Project Number: 550-319	
Drawn: [Blank]		[Blank]		[Blank]		[Blank]		FULLY SPRINKLERED		Drawing Number: 154 & 135	
Checked: [Blank]		[Blank]		[Blank]		[Blank]		Approved: [Blank]		Drawing Number: SF101	
Date: 04/09/2020		Date: 04/09/2020		Date: 04/09/2020		Date: 04/09/2020		Date: 04/09/2020		Date: 04/09/2020	
[Blank]		[Blank]		[Blank]		[Blank]		[Blank]		[Blank]	



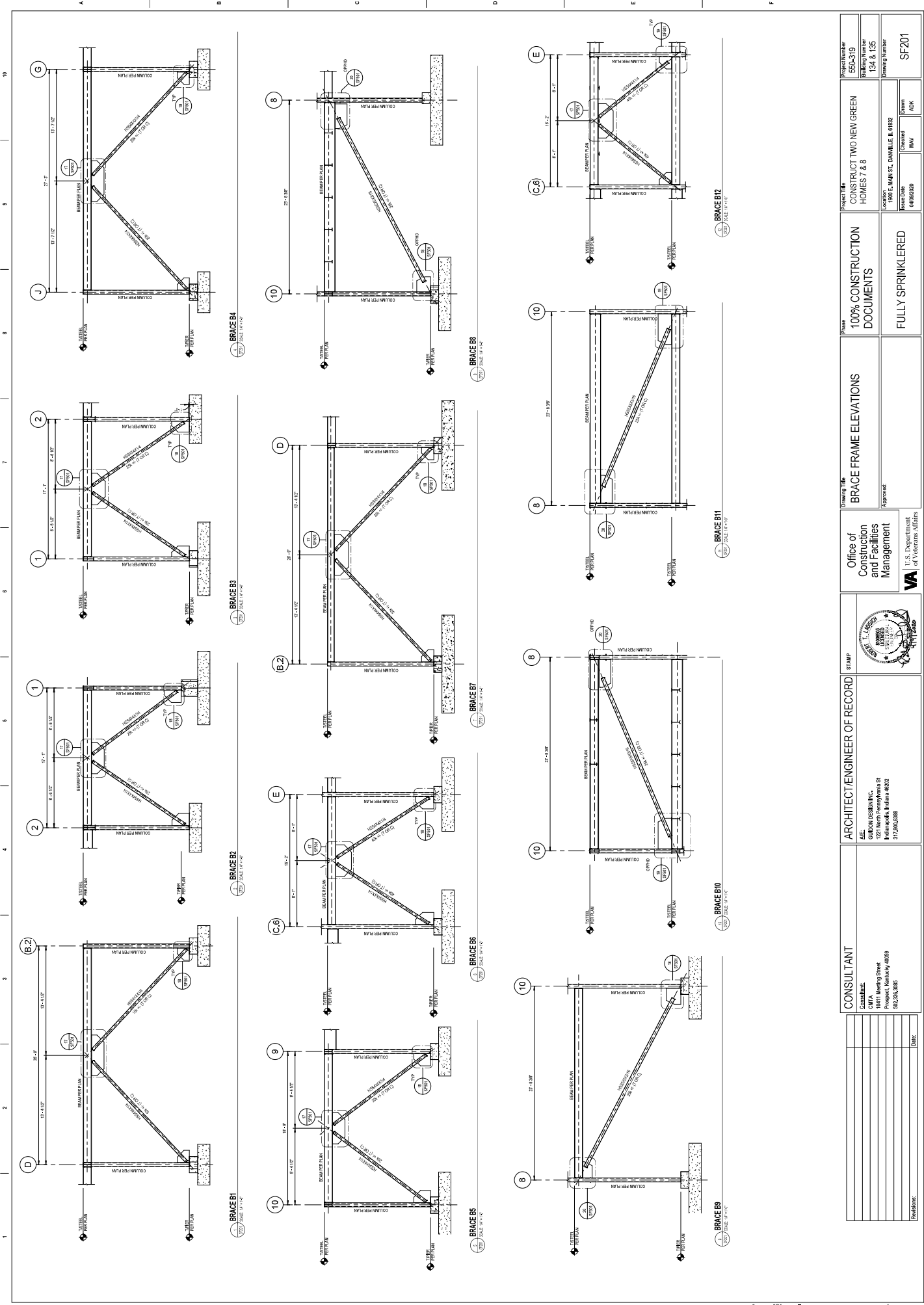
ROOF TRUSS PLAN
SCALE: 1/8" = 1'-0"

- NOTES:
- 1. (1) INDICATED TRUSS TYPE, SEE SHEET FOR MORE DETAILS.
 - 2. (2) INDICATED TRUSS TYPE, SEE SHEET FOR MORE DETAILS.
 - 3. (3) INDICATED TRUSS TYPE, SEE SHEET FOR MORE DETAILS.
 - 4. (4) INDICATED TRUSS TYPE, SEE SHEET FOR MORE DETAILS.
 - 5. (5) INDICATED TRUSS TYPE, SEE SHEET FOR MORE DETAILS.
 - 6. (6) INDICATED TRUSS TYPE, SEE SHEET FOR MORE DETAILS.
 - 7. (7) INDICATED TRUSS TYPE, SEE SHEET FOR MORE DETAILS.
 - 8. (8) INDICATED TRUSS TYPE, SEE SHEET FOR MORE DETAILS.
 - 9. (9) INDICATED TRUSS TYPE, SEE SHEET FOR MORE DETAILS.
 - 10. (10) INDICATED TRUSS TYPE, SEE SHEET FOR MORE DETAILS.

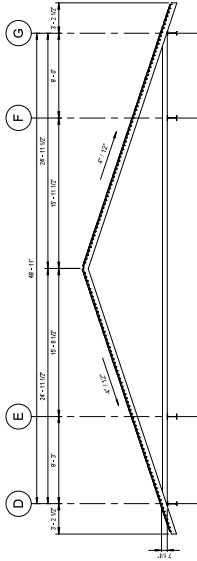
HIGH ROOF TRUSS PLAN
SCALE: 1/8" = 1'-0"

- NOTES:
- 1. (1) INDICATED TRUSS TYPE, SEE SHEET FOR MORE DETAILS.
 - 2. (2) INDICATED TRUSS TYPE, SEE SHEET FOR MORE DETAILS.

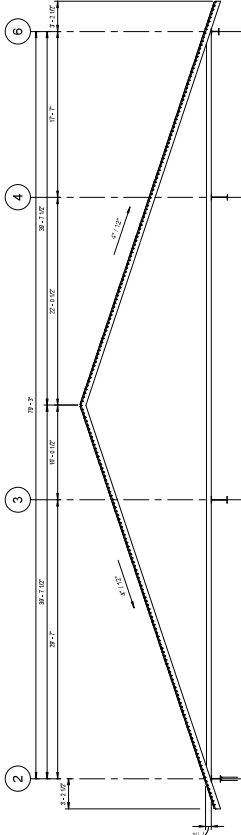
CONSULTANT		ARCHITECT/ENGINEER OF RECORD		STAMP		Office of Construction and Facilities Management		100% CONSTRUCTION DOCUMENTS		Project Name	
CWA 10411 Beading Street Prospect, Kentucky 40059 502.261.1050		GIBSON DESIGN, INC. 1221 North Perry Avenue St Indianapolis, Indiana 46202 317.260.0388				U.S. Department of Veterans Affairs		CONSTRUCT TWO NEW GREEN HOMES 1 & 6		550-319	
Revisions:								Location		Drawing Number	
Date:								1900 E. MAIN ST., DANVILLE, IL 61832		134 & 135	
								Revision Date		Drawing Number	
								04/09/2020		SF102	
								Checked		Drawn	
								MAV		AKK	



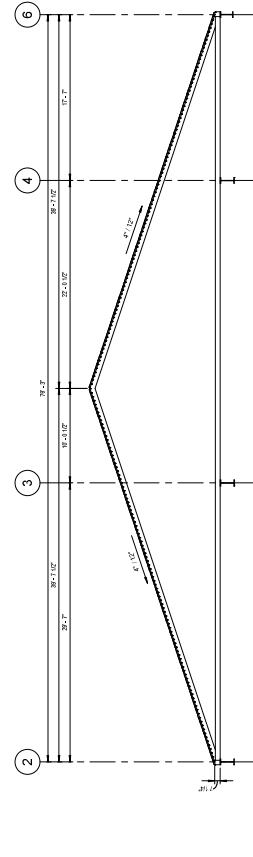
CONSULTANT		ARCHITECT/ENGINEER OF RECORD		STAMP		Office of Construction and Facilities Management		100% CONSTRUCTION DOCUMENTS		Project #154-319	
CWA		GILSON DESIGN, INC.		T. L. Gilson		U.S. Department of Veterans Affairs		CONSTRUCT TWO NEW GREEN HOMES 7 & 8		550-319	
10411 Beeding Street		1221 North Pennsylvania St		INDIANAPOLIS, INDIANA 46202		U.S. Department of Veterans Affairs		Location		154 & 135	
502.2A, 1020		317.260.0388				U.S. Department of Veterans Affairs		Drawing Number		SF201	
Date:		Date:		Date:		Date:		Date:		Date:	
Drawn:		Drawn:		Drawn:		Drawn:		Drawn:		Drawn:	
Checked:		Checked:		Checked:		Checked:		Checked:		Checked:	
Approved:		Approved:		Approved:		Approved:		Approved:		Approved:	
Date:		Date:		Date:		Date:		Date:		Date:	
10/2020		10/2020		10/2020		10/2020		10/2020		10/2020	
10/2021		10/2021		10/2021		10/2021		10/2021		10/2021	



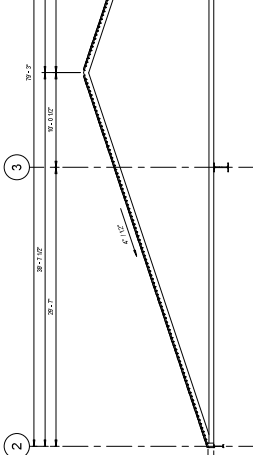
TRUSS T1
SCALE 3/8" = 1'-0"



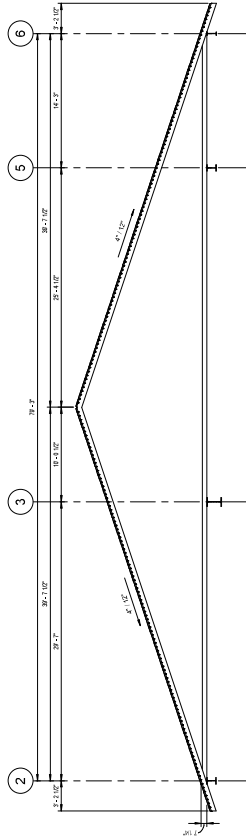
TRUSS T2
SCALE 3/8" = 1'-0"



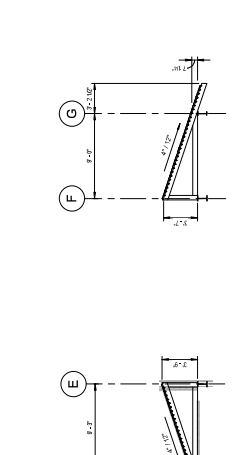
TRUSS T3
SCALE 3/8" = 1'-0"



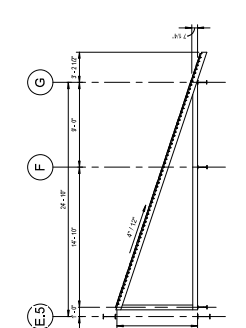
TRUSS T4
SCALE 3/8" = 1'-0"



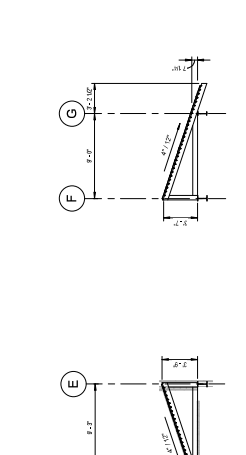
TRUSS T5
SCALE 3/8" = 1'-0"



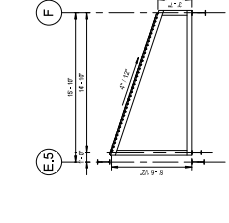
TRUSS T6
SCALE 3/8" = 1'-0"



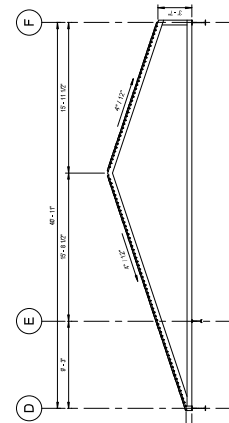
TRUSS T7
SCALE 3/8" = 1'-0"



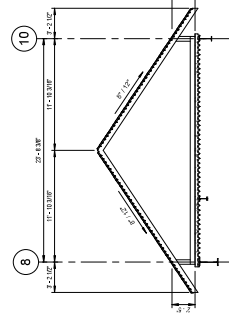
TRUSS T8
SCALE 3/8" = 1'-0"



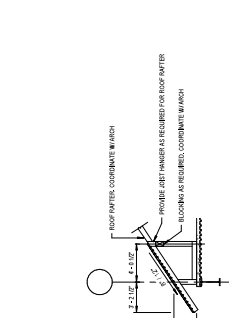
TRUSS T9
SCALE 3/8" = 1'-0"



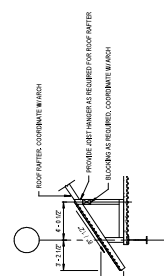
TRUSS T10
SCALE 3/8" = 1'-0"



TRUSS T11
SCALE 3/8" = 1'-0"



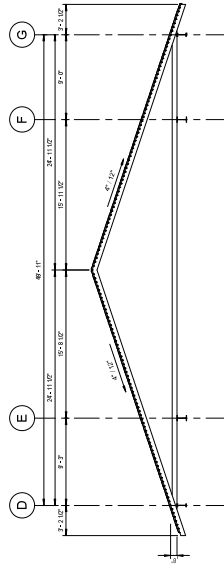
TRUSS T12
SCALE 3/8" = 1'-0"



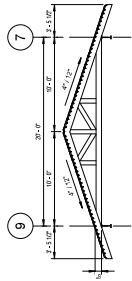
OVERBUILT FRAMING
SCALE 3/8" = 1'-0"

CONSULTANT	ARCHITECT/ENGINEER OF RECORD	STAMP	Office of Construction and Facilities Management	100% CONSTRUCTION DOCUMENTS	Project #
Coordinate: CWA	LAE: GIBSON DESIGN, INC.	Seal	U.S. Department of Veterans Affairs	CONSTRUCT TWO NEW GREEN HOMES T & 6	550-319
11011 Beading Street	1221 North Pennsylvania St				
Prospect, Kentucky 40059	Indianapolis, Indiana 46202				
502.26.1625	317.260.0388				
Drawn:					
Check:					

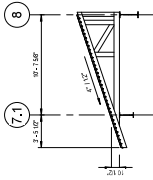
Project Number: 550-319	Project #	100% CONSTRUCTION DOCUMENTS	Office of Construction and Facilities Management	100% CONSTRUCTION DOCUMENTS	Project #
Drawing Number: 134 & 135	Seal	U.S. Department of Veterans Affairs	U.S. Department of Veterans Affairs	CONSTRUCT TWO NEW GREEN HOMES T & 6	550-319
Location: 1900 E. MAIN ST., DANVILLE, IL 61822	Seal				
Revision Number: 04/09/2020	Seal				
Drawn: ANK	Check: MAY				
Scale: 3/8" = 1'-0"	Scale: 3/8" = 1'-0"				



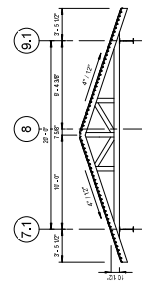
TRUSS T13 - BID DEDUCT #4



TRUSS C3



1. TOP AN



TRUSS C1

	Date:

CONSULTANT

Consultant:
CMTA
10411 Meeting Street
Prospect, Kentucky 40059

ARCHITECT/ENGINEER OF RECORD

A/E:
GUIDON DESIGN INC.
1221 North Pennsylvania St
Indianapolis, Indiana 46202



Office of
Construction
and Facilities
Management

Drawing Title
TRUSS PROFILES
Approved:

100% CONSTRUCTION DOCUMENTS

Project Title	CONSTRUCT TWO NEW GREEN HOMES 7 & 8
Location	

Project Number	550-319
Building Number	134 & 135
Drawing Number	SF203